

Influenza Surveillance Report 2019–2020

Week 50 (Dec. 8–14, 2019)

Data extracted Dec.20, 2019 at 11:00 am

Next report date: Jan. 3, 2020

Provincial Update: Influenza activity in Manitoba is overall increasing. Influenza A detections in Week 50 slightly increased from Week 49 while influenza B detections continued to decrease from Week 48. The number of detections for Influenza A and B became similar in Week 50 in laboratory testing. In Week 50, influenza A cases continued to concentrate in Winnipeg and more than two thirds of influenza B cases were reported from Winnipeg and the southern region. Activity level in some syndromic indicators increased and was within expected levels at this time of a year.

National Update: Influenza activity continued to increase across multiple indicators. Regions across the country are reporting influenza activity. In week 49, the majority of laboratory detections continued to be influenza A and the proportion of influenza B increased (44%). This season, the majority of hospitalizations reported have been associated with influenza A(H3N2). Approximately 50% of pediatric hospitalizations were associated with influenza B.

International Update: As of Week 50, seasonal influenza activity in the United States continued to increase and has been elevated for six weeks. Overall, influenza B/Victoria viruses are the most common followed by influenza A(H1N1)pdm09. However, the predominant virus varies by region and age group.



Laboratory	This Week
Laboratory-confirmed influenza cases:	
<ul style="list-style-type: none"> Influenza A: 17 ↑ Influenza B: 17 	
From Sept.	
<ul style="list-style-type: none"> Influenza A: 73 Influenza B: 117 	

Severity	This Week
Severe outcomes associated with influenza:	
<ul style="list-style-type: none"> Hospitalizations: 4 ICU* admissions: 0 Deaths: 0 	
From Sept.	
<ul style="list-style-type: none"> Hospitalizations: 25 ICU* admissions: 3 Deaths: 1 	

Outbreaks	This Week
Laboratory-confirmed influenza outbreaks:	
<ul style="list-style-type: none"> Influenza A: 0 Influenza B: 0 Influenza A & B: 0 	
From Sept.	
<ul style="list-style-type: none"> Influenza A: 3 Influenza B: 1 Influenza A & B: 0 	

Calls	This Week
Calls to Influenza Service at Health Links–Info Santé: 33 ↑	

Physician Visits	This Week
Visits to sentinel physicians due to ILI: 1.1 % ↑	

Vaccine	As of Dec.13
<ul style="list-style-type: none"> Percentage of Manitoba residents immunized with the seasonal influenza vaccine: 19.9% 	

Antiviral	This Week
Units of antiviral dispensed from pharmacies: 35	

ER Visits	This Week
Respiratory visits to Emergency Department (ED): 172/day ↑	

Note. * ICU admissions were also included in hospitalizations. Numbers are subject to change. Missed events in the current report due to a delay of submission to MHSAL will be included in later reports when data become available.

Influenza Surveillance Report 2019–2020

Figure 1. Weekly Cases of Laboratory-Confirmed Influenza, Manitoba

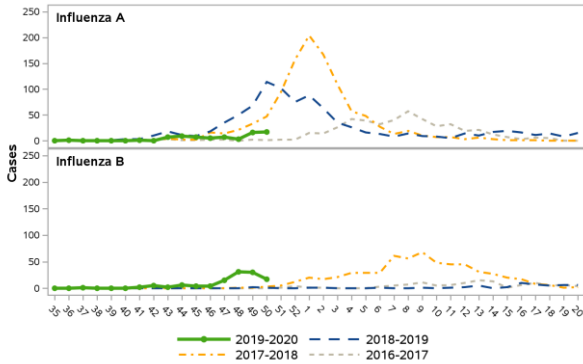


Figure 2. Average Daily Respiratory Visits to Emergency Department and % of Total Visits, Winnipeg Regional Health Authority, Manitoba

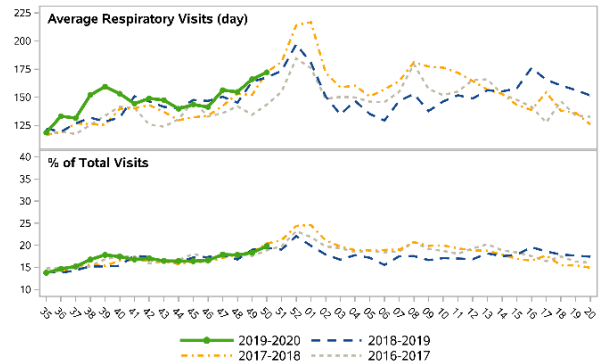


Figure 3. Weekly Influenza and ILI Outbreaks, Manitoba

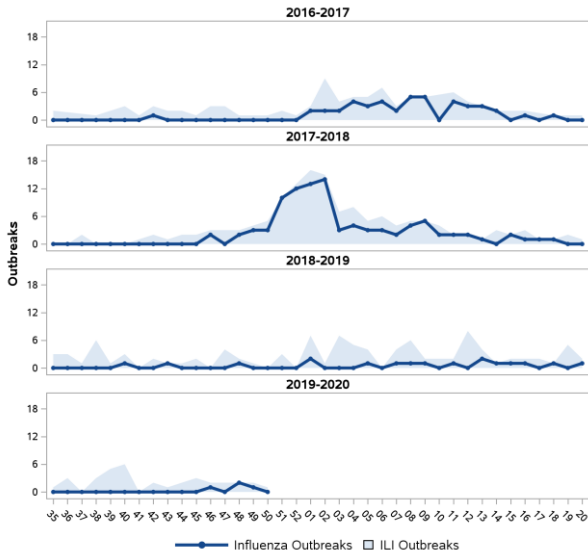


Table 1. Antiviral Resistance of Isolates by Influenza Type and Subtype since September 1, 2019

		Oseltamivir		Zanamivir	
		R*	S**	R*	S**
Canada	A(H3N2)	0	74	0	75
	A(H1N1)	0	44	0	44
	B	0	39	0	39
Manitoba	A(H3N2)	0	2	0	2
	A(H1N1)	0	3	0	3
	B	0	7	0	7

* Resistant **Sensitive

Table 2. Influenza Strain Characterization reported by National Microbiology Laboratory since September 1, 2019

Strain	Number of viruses	
	Canada	Manitoba
Influenza A (H3N2) A/Kansas/14/2017-like	20	1
Influenza A (H1N1) A/Brisbane/02/2018-like	35	3
Influenza B B/Colorado/06/2017-like	33	8

As per the World Health Organization (WHO), all seasonal quadrivalent influenza vaccines for 2019–2020 in the northern hemisphere contain those strains.