

# Influenza Surveillance Report 2019–2020

## Week 4 (Jan. 19–25, 2020)

Data extracted Jan.31, 2020 at 11:00 am

Next report date: Feb. 7, 2020

**Provincial Update:** In Week 4, influenza activity was high and similar to the previous week. The proportion of patients who tested positive for influenza among all tested respiratory patients was 36%. Influenza A detections and influenza B detections remained at a high level. Respiratory syncytial viruses (RSV) continued to co-circulate. The number of respiratory visits to the Emergency Department continued to decrease from Week 52. The units of antiviral dispensation continued to increase but were within expected level at this time of a year. The other syndromic indicators decreased slightly from the last week. Overall, younger populations have been affected more in this season. Almost all influenza B cases and two thirds of influenza A cases are below the age of 65.

**National Update:** In Week 3, influenza activity either decreased or remained similar to the previous week across multiple indicators. Influenza A remains as the predominant circulating type and influenza B continues to circulate at higher levels than usual. Influenza A(H1N1) is currently the dominant influenza A circulating in Canada, representing 77% of subtyped influenza A specimens in week 03. The highest cumulative hospitalization rates were among children under 5 years of age and adults 65 years of age and older.

**International Update:** As of Week 4, flu activity increased over the last two weeks after two weeks of declining activity at the beginning of this year. Severity levels (hospitalizations and deaths) are not high so far this season. During recent weeks, influenza A(H1N1) have been reported slightly more than influenza B/Victoria reported.



Laboratory**	This Week
Laboratory-confirmed influenza cases:	
<ul style="list-style-type: none"> <li>Influenza A: <b>92</b></li> <li>Influenza B: <b>60</b></li> </ul>	
From Sept.	
<ul style="list-style-type: none"> <li>Influenza A: <b>426</b></li> <li>Influenza B: <b>547</b></li> </ul>	

Severity	Week 3
Severe outcomes associated with influenza:	
<ul style="list-style-type: none"> <li>Hospitalizations: <b>9</b></li> <li>ICU* admissions: <b>2</b></li> <li>Deaths: <b>1</b></li> </ul>	
From Sept.	
<ul style="list-style-type: none"> <li>Hospitalizations: <b>180</b></li> <li>ICU* admissions: <b>21</b></li> <li>Deaths: <b>10</b></li> </ul>	

Outbreaks	This Week
Laboratory-confirmed influenza outbreaks:	
<ul style="list-style-type: none"> <li>Influenza A: <b>1</b></li> <li>Influenza B: <b>2</b></li> <li>Influenza A &amp; B: <b>0</b></li> </ul>	
From Sept.	
<ul style="list-style-type: none"> <li>Influenza A: <b>13</b></li> <li>Influenza B: <b>5</b></li> <li>Influenza A &amp; B: <b>1</b></li> </ul>	

Calls	This Week
Calls to Influenza Service at Health Links–Info Santé: <b>40</b>	

Physician Visits	This Week
Visits to sentinel physicians due to ILI: <b>2.7%</b>	

Vaccine	As of Jan. 31
<ul style="list-style-type: none"> <li>Percentage of Manitoba residents immunized with the seasonal influenza vaccine: <b>24.4%</b></li> </ul>	

Antiviral	This Week
Units of antiviral dispensed from pharmacies: <b>213</b> ↑	

ER Visits	This Week
Respiratory visits to Emergency Department (ED): <b>191/day</b>	

**Note.** \* ICU admissions were also included in hospitalizations.

\*\*Laboratory-confirmed influenza cases were reported from the provincial Laboratory Information Management System (LIMS).

Numbers are subject to change. Missed events in the current report due to a delay of submission to MHSAL will be included in later reports when data become available.

# Influenza Surveillance Report 2019–2020

Figure 1. Weekly Cases of Laboratory-Confirmed Influenza, Manitoba

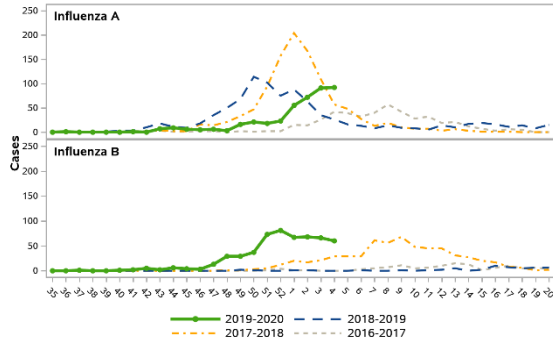


Figure 2. Weekly Influenza and ILI Outbreaks, Manitoba

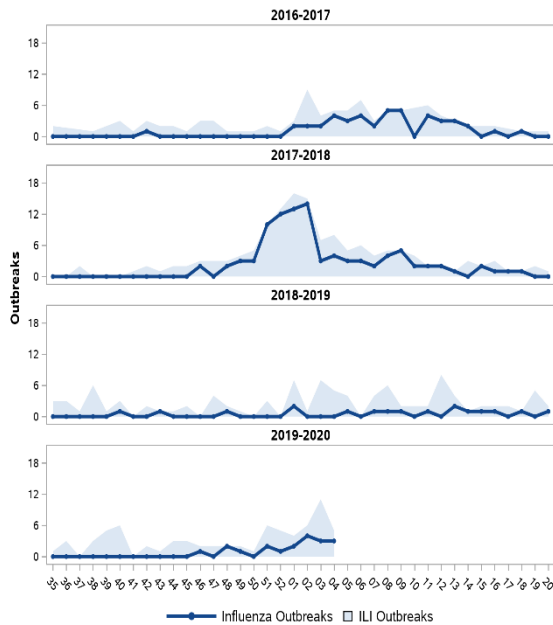


Figure 3. Average Daily Respiratory Visits to Emergency Department and % of Total Visits, Winnipeg Regional Health Authority, Manitoba

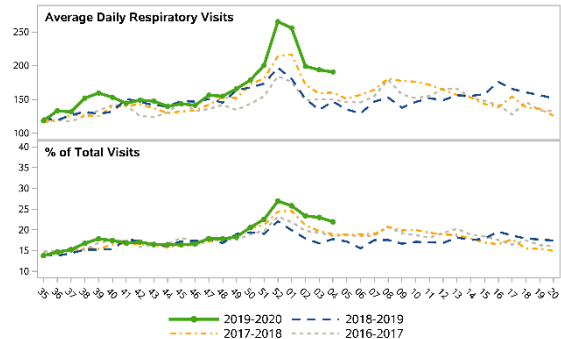


Table 1. Antiviral Resistance of Isolates by Influenza Type and Subtype since September 1, 2019

		Oseltamivir		Zanamivir	
		R*	S**	R*	S**
Canada	A(H3N2)	0	128	0	128
	A(H1N1)	1	89	0	90
	B	0	114	0	114
Manitoba	A(H3N2)	0	4	0	4
	A(H1N1)	0	3	0	3
	B	0	11	0	11

\* Resistant \*\*Sensitive

Table 2. Influenza Strain Characterization reported by National Microbiology Laboratory since September 1, 2019

Strain	Number of viruses	
	Canada	Manitoba
Influenza A (H3N2) A/Kansas/14/2017-like	39	1
Influenza A (H1N1) A/Brisbane/02/2018-like	218	4
Influenza B B/Colorado/06/2017-like	131	15
Influenza B B/Phuket/3073/13-like	2	0

As per the World Health Organization (WHO), all seasonal quadrivalent influenza vaccines for 2019–2020 in the northern hemisphere contain those strains.