

Economic contribution of Manitoba's Agriculture and Agri-food sector



Manitoba's agriculture and agri-food sector brings

\$17.1 billion

IN DIRECT OUTPUT,¹

GENERATING \$5.2 billion
in GDP

8%

of the
provincial
GDP



1 in 20 jobs

comes from our agriculture and agri-food sector,

EMPLOYING

36,355

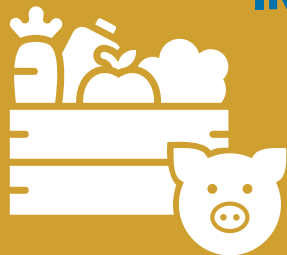
people
in Manitoba



THE ECONOMIC IMPACT

of the agriculture and agri-food sector in Manitoba extends far beyond its direct contributions

The estimated total
ECONOMIC IMPACT² IS
\$27.1 billion
IN OUTPUT,



\$9.2 billion
in GDP

The sector creates over

108,000
JOBS IN MANITOBA

including indirect impacts



MANITOBA'S AGRICULTURE AND AGRI-FOOD SECTOR IS STRONG AND GROWING.

Find out more at www.manitoba.ca/agriculture

¹ Output consists of farm cash receipts from primary agriculture and sales from food manufacturing sector.

² Total impact includes direct and indirect impacts.

Economic Contribution of the Manitoba Crop Sector



Manitoba's crop sector brings

**\$6.1
billion**
IN DIRECT OUTPUT



GENERATING



**\$2.9
billion**
IN GDP

EMPLOYING
10,671
people
in Manitoba



**THE
ECONOMIC
IMPACT**

of the crop
sector in
Manitoba
extends far
beyond its direct
contribution

The estimated
ECONOMIC IMPACT IS
**\$8.1
billion**



IN OUTPUT,
\$3.6 billion
in GDP

The sector creates over

25,300
JOBS IN MANITOBA

including
indirect
jobs



**MANITOBA'S AGRICULTURE AND AGRI-FOOD SECTOR
IS STRONG AND GROWING.**

Find out more at www.manitoba.ca/agriculture

* The estimated impact includes direct and indirect impacts.

Direct impacts (direct output, GDP, and employment data) were sourced from Statistics Canada, 2022.

Indirect impacts - Manitoba Bureau of Statistics, Manitoba Input-Output Model, derived from the Statistics Canada supply use tables (2019).

Manitoba 

Economic Contribution of the Manitoba Livestock Sector

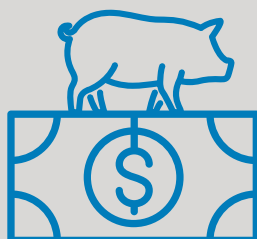


Manitoba's livestock sector brings

\$3.0 billion
IN DIRECT OUTPUT

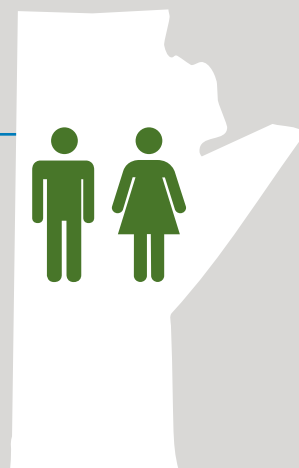


GENERATING



\$679 million
IN GDP

EMPLOYING
9,919
people
in Manitoba



THE ECONOMIC IMPACT

of the livestock sector in Manitoba extends far beyond its direct contribution

The estimated
ECONOMIC IMPACT IS

\$5.8 billion

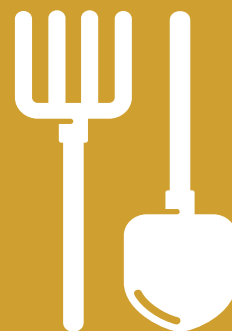


IN OUTPUT
\$1.6 billion
in GDP

The sector creates over

19,900
JOBS IN MANITOBA

including indirect jobs



MANITOBA'S AGRICULTURE AND AGRI-FOOD SECTOR IS STRONG AND GROWING.

Find out more at www.manitoba.ca/agriculture

* The estimated impact includes direct and indirect impacts.

Direct impacts (direct output, GDP, and employment data) were sourced from Statistics Canada, 2022.

Indirect impacts - Manitoba Bureau of Statistics, Manitoba Input-Output Model, derived from the Statistics Canada supply use tables (2019).

Manitoba 

Economic Contribution of the Manitoba Food Processing Sector

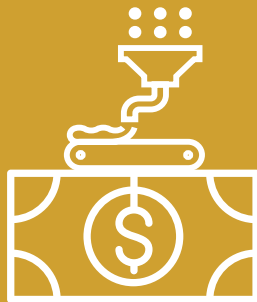


Manitoba's food processing sector brings

\$8 billion
IN DIRECT OUTPUT

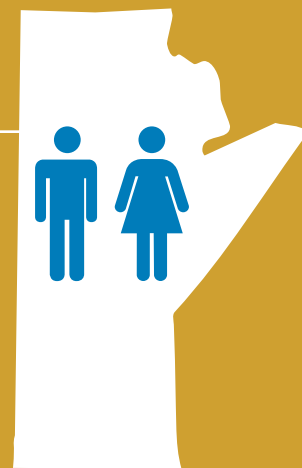


GENERATING



\$1.6 billion
IN GDP

EMPLOYING
15,765
people
in Manitoba



THE ECONOMIC IMPACT

of the food processing sector in Manitoba extends far beyond its direct contribution

The estimated
ECONOMIC IMPACT IS
\$13.4 billion

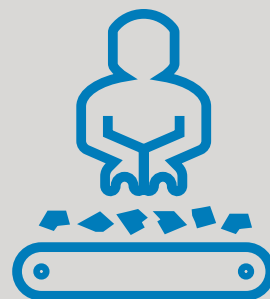


IN OUTPUT
\$4 billion
in GDP

The sector creates over

63,000
JOBS IN MANITOBA

including indirect jobs



MANITOBA'S AGRICULTURE AND AGRI-FOOD SECTOR IS STRONG AND GROWING.

Find out more at www.manitoba.ca/agriculture

* The estimated impact includes direct and indirect impacts.

Direct impacts (direct output, GDP, and employment data) were sourced from Statistics Canada, 2022.

Indirect impacts - Manitoba Bureau of Statistics, Manitoba Input-Output Model, derived from the Statistics Canada supply use tables (2019).

Manitoba 