

SECTOR PROFILE AT A GLANCE

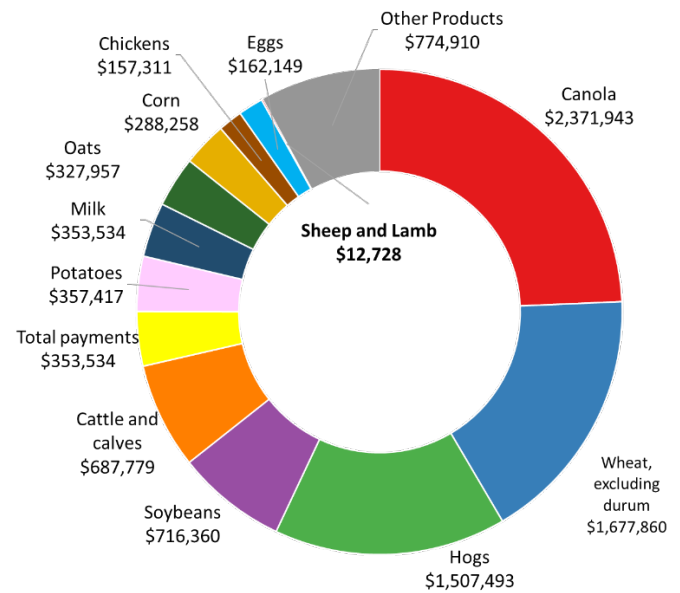
Sheep



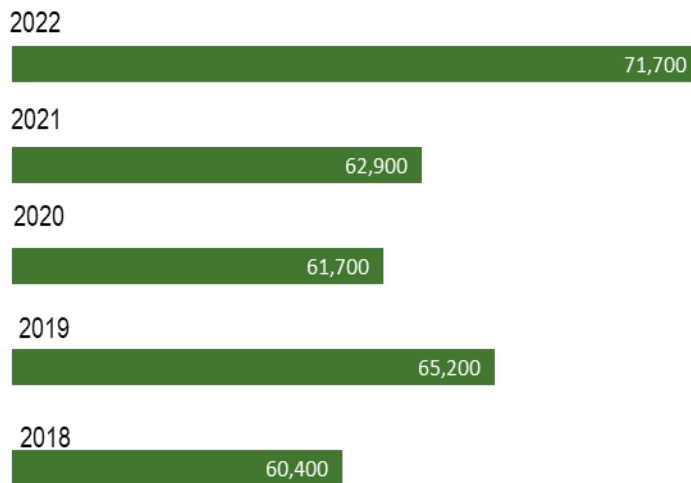
Highlights

- In 2022, Manitoba sold 71,700 head, and reported \$12.7 million in cash receipts for sheep and lambs.
- Economic contribution of primary sheep and lamb production (direct and indirect output) was \$24 million, in 2022.
- Manitoba's affordable and resourceful land provides an excellent base for sheep production. Flocks are strategically located throughout the province.
- There was 51,551 kg of shorn wool sold in 2022.

Farm Cash Receipts ('000 of dollars)

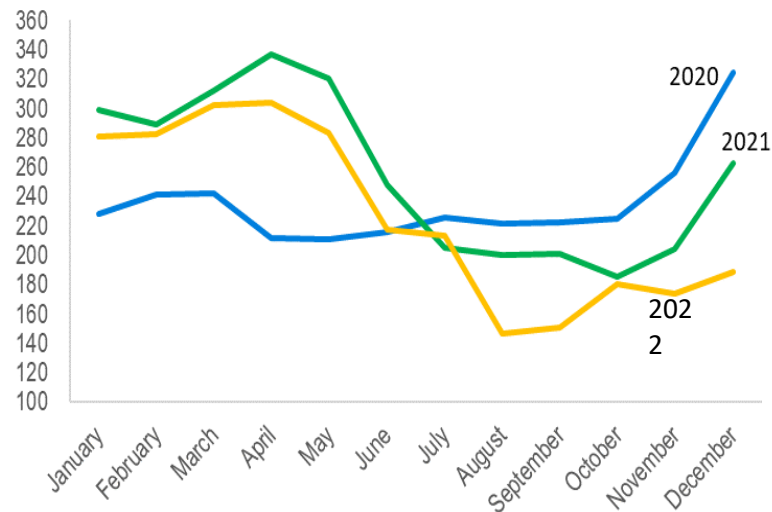


Sales (head)



Source: Statistics Canada

Prices (lambs, dollars per cwt, monthly)



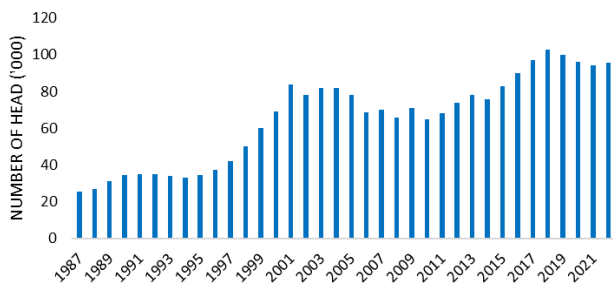
Source: Statistics Canada

Inventory

- On July 1, 2022, there were 95,900 head of sheep and lambs on farms, a decrease of two per cent compared to the previous year.
- Manitoba has approximately 9 per cent of the national number of sheep and lamb.

Sheep and Lamb on Farms

('000 head, July 1)



Source: Statistics Canada

Marketing, Processing and Trade

- In 2022, Manitoba sheep and lambs were sold to Ontario, British Columbia, Alberta and Saskatchewan for feeding and further processing.
- Manitoba origin sheep and lambs processed in Canada numbered 24,900 head in 2022.
- In 2022, 13 provincially licensed plants processed 4,365 sheep and lambs, representing 18 per cent of Manitoba origin harvested animals.
- There was no international imports or exports of live sheep and lamb in 2022.
- The average lamb and mutton consumption in Canada is 1.09 kilogram per capita.

DID YOU KNOW?

- Sheep are known as “grazing herbivores” as they feed on plants in small increments throughout the day.
- Farmers use sheep to assist in killing off invasive plants to maintain and improve the quality of their land.
- Most of the 51,551 kg of wool produced in 2022 was sold to the Canadian Cooperative Wool Growers.
- Lanolin, a waterproof fatty oil found in sheep wool, is a product highly sought by cosmetic companies, as it is a key ingredient in cosmetic products.
- The majority of lambs in Manitoba are born between April and June.
- Sheep’s milk is high in protein making it popular for health and fitness.

Updated July 2023