

Influenza Surveillance Report 2019–2020

Week 6 (Feb. 2–8, 2020)

Data extracted Feb.14, 2020 at 11:00 am

Next report date: Feb. 21, 2020

Provincial Update: In Week 6, influenza activity decreased from the previous week but remained at a high level. The proportion of patients who tested positive for influenza among all tested respiratory patients was 36%. Both influenza A and B detections decreased from the previous week. Respiratory syncytial viruses (RSV) continued to co-circulate at a level decreased from Week 1, although still higher than expected for this time of a year. Activity level in all syndromic indicators continued to decrease. Overall, younger populations have been affected more in this season. Almost all influenza B cases and three quarters of influenza A cases are below the age of 65.

National Update: As of Week 5, influenza activity remained high with almost all indicators increased from the previous week. Influenza A and B continued to co-circulate. Influenza A(H1N1) was dominating and represented 84% of subtyped influenza A specimens in week 5. The highest cumulative hospitalization rates are among children under 5 years of age and adults 65 years of age and older.

International Update: As of Week 5, influenza activity remained high after fluctuation in the first four weeks this year. Severity levels (hospitalizations and deaths) are not high at this point of a year. During recent weeks, influenza A(H1N1) detections continued to increase. Overall, numbers of influenza A(H1N1) viruses and influenza B/Victoria viruses reported are approximately equal.



Laboratory**	This Week
Laboratory-confirmed influenza cases:	
<ul style="list-style-type: none"> Influenza A: 73 Influenza B: 31 	
From Sept.	
<ul style="list-style-type: none"> Influenza A: 597 Influenza B: 621 	

Severity	Week 5
Severe outcomes associated with influenza:	
<ul style="list-style-type: none"> Hospitalizations: 4 ICU* admissions: 0 Deaths: 1 	
From Sept.	
<ul style="list-style-type: none"> Hospitalizations: 269 ICU* admissions: 26 Deaths: 18 	

Outbreaks	This Week
Laboratory-confirmed influenza outbreaks:	
<ul style="list-style-type: none"> Influenza A: 1 Influenza B: 0 Influenza A & B: 0 	
From Sept.	
<ul style="list-style-type: none"> Influenza A: 16 Influenza B: 6 Influenza A & B: 1 	

Calls	This Week
Calls to Influenza Service at Health Links–Info Santé: 23	

Physician Visits	This Week
Visits to sentinel physicians due to ILI: 0.4%	

Vaccine	As of Feb. 14
<ul style="list-style-type: none"> Percentage of Manitoba residents immunized with the seasonal influenza vaccine: 25.4% 	

Antiviral	This Week
Units of antiviral dispensed from pharmacies: 121	

ER Visits	This Week
Respiratory visits to Emergency Department (ED): 164/day	

Note. * ICU admissions were also included in hospitalizations.

**Laboratory-confirmed influenza cases were reported from the provincial Laboratory Information Management System (LIMS).

Numbers are subject to change. Missed events in the current report due to a delay of submission to MHSAL will be included in later reports when data become available.

Influenza Surveillance Report 2019–2020

Figure 1. Weekly Cases of Laboratory-Confirmed Influenza, Manitoba

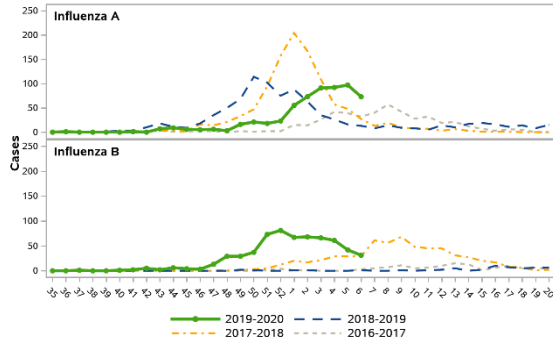


Figure 2. Weekly Influenza and ILI Outbreaks, Manitoba

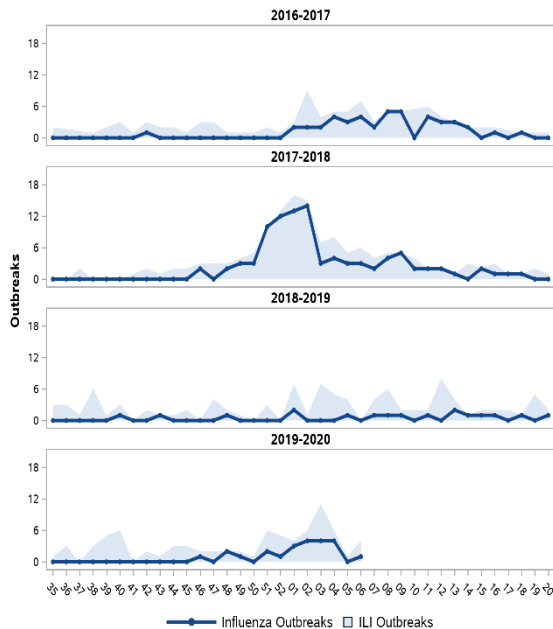


Figure 3. Average Daily Respiratory Visits to Emergency Department and % of Total Visits, Winnipeg Regional Health Authority, Manitoba

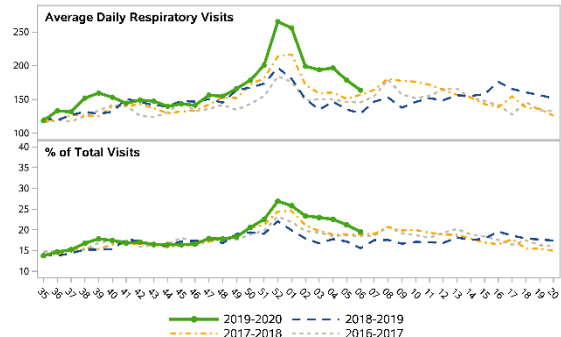


Table 1. Antiviral Resistance of Isolates by Influenza Type and Subtype since September 1, 2019

		Oseltamivir		Zanamivir	
		R*	S**	R*	S**
Canada	A(H3N2)	0	135	0	135
	A(H1N1)	1	143	0	144
	B	0	148	0	148
Manitoba	A(H3N2)	0	5	0	5
	A(H1N1)	0	4	0	4
	B	0	18	0	18

* Resistant **Sensitive

Table 2. Influenza Strain Characterization reported by National Microbiology Laboratory since September 1, 2019

Strain	Number of viruses	
	Canada	Manitoba
Influenza A (H3N2) A/Kansas/14/2017-like	41	1
Influenza A (H1N1) A/Brisbane/02/2018-like	235	6
Influenza B B/Colorado/06/2017-like	180	17
Influenza B B/Phuket/3073/13-like	2	0

As per the World Health Organization (WHO), all seasonal quadrivalent influenza vaccines for 2019–2020 in the northern hemisphere contain those strains.