

BIRDS HILL Park Explorer



Ages 10-12

Hi! Would you like to become a Park Explorer just like Frankie Fox? Complete the activities in this booklet to discover more about Manitoba's provincial parks and the great ways for you to explore the outdoors. Once you are done, fill in the back page and return the book to become an **official Park Explorer!**



My name is

What are your three favourite things to do in a park?

1)

2)

3)

If you need further assistance in completing these activities, look for a park interpreter at park programs and interpretive centres for help.

How Glaciers Shaped the Land

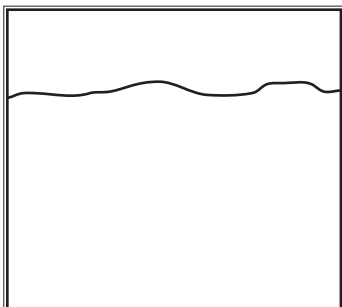
Glaciers are made up of snow and ice. They moved over this land thousands of years ago. As they moved, they shaped the land to what it is today. Can you draw the rocks, gravel and sand in the comic strip below to match the descriptions of how the glaciers shaped this land?

20,000 years ago snow and ice covered this land ...

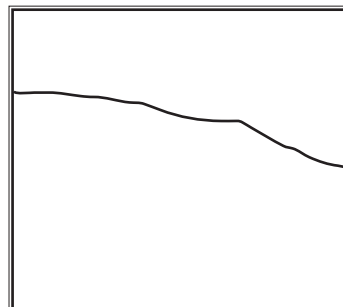
As the glacier advanced (moved forward) it brought rocks with it from the North.

When the weather became warm the glacier retreated (melted), leaving behind rocks and sand.

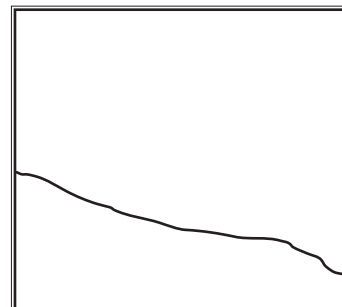
Glaciers left behind formations in the land called eskers (large hills) and erratics (boulders) along the landscape where it had been.



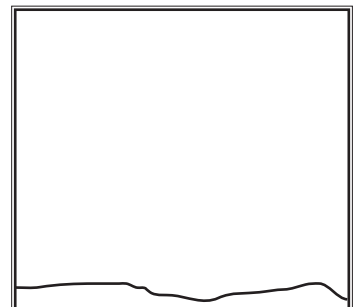
Draw snowflakes, making the glacier larger over time.



Draw rocks spread out across the glacier as it advances.



Draw rocks left behind on low end as glacier retreats.



Draw an esker (large hill) and erratics (boulders) on the land.

Habitats Along an Esker Ridge

An esker is a large hill formed by sand and gravel leftover from a glacier.

When water flows down the hill, it creates different types of habitats in different areas.

Use the code to discover the different habitats found along the esker ridge in Birds Hill Park.

A	B	C	D	E	F	G	H	I	J	K	L	M	N	O	P	Q	R	S	T	U	V	W	X	Y	Z
8	3	20	1	26	19	11	6	18	2	13	14	12	15	25	17	10	21	9	5	16	4	24	22	7	23

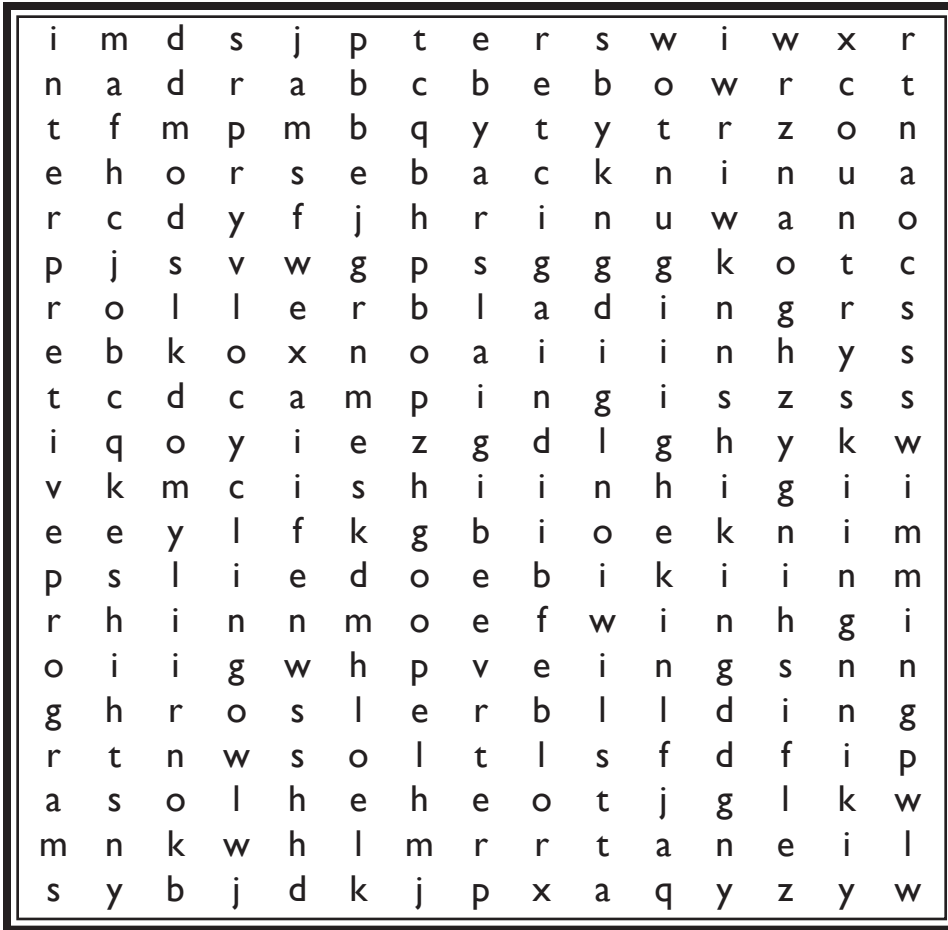
20 26 1 8 21 3 25 11 , 8 9 17 26 15 - 25 8 13 17 8 21 13 14 8 15 1
 11 21 8 9 9 14 8 15 1 9 , 3 25 21 26 8 14 19 25 21 26 9 5
 9 17 21 16 20 26 3 25 11 , 1 26 20 18 1 16 25 16 9 19 25 21 26 9 5

My Favourite Park Activities

Birds Hill Park has many recreational and educational opportunities throughout the different seasons. You can do all of these with your family and friends. Can you find all twelve of the hidden activities in the word search below?

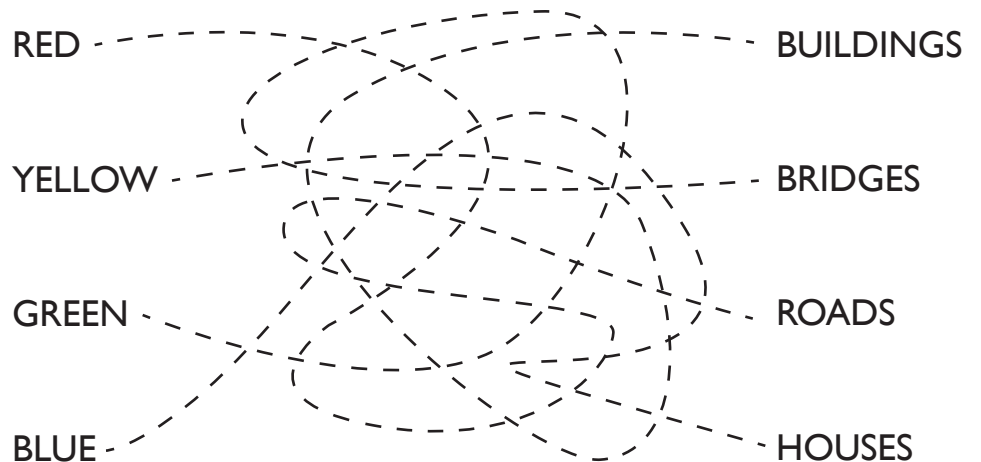
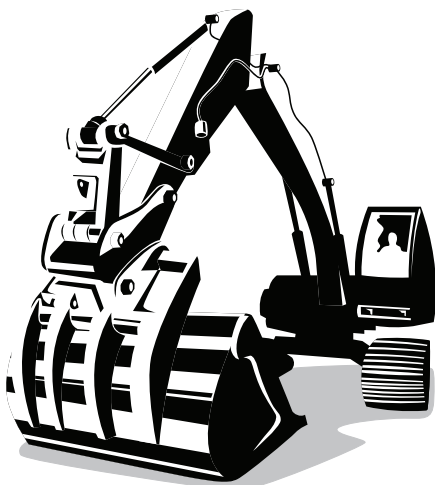
Words to Find

- camping
- x-country skiing
- cycling
- fishing
- hiking
- horseback
- interpretive programs
- rollerblading
- snowmobiling
- snowshoeing
- swimming
- wildlife



Move that Sand!

When the glaciers moved through this area thousands of years ago, they left deposits of sand and gravel which formed large hills called eskers. The sand and gravel from the eskers in the Birds Hill Park area was used to build the City of Winnipeg and other landmarks. Follow the lines from the sand and gravel pile to the different structures built in the City of Winnipeg, then write the colour under the answer.



The Prairies are Our Home

When humans dig up the natural land, we disturb the plants and wildlife that live there. Sometimes these species can move into new habitats (homes), but other times they cannot find suitable habitats. Habitat loss is one of the biggest reasons why plants and animals become endangered or even extinct. Birds Hill Park protects the land so that this will not happen to the plants and wildlife that live here.

Follow the descriptions to colour these pictures of plants and wildlife that have become endangered because of habitat loss on the prairies.



Burrowing Owl

Primarily brown with white marks on top and horizontal barring on their underside. White facial markings and a white chin stripe. Yellow eyes and beak. White legs.



Small white lady's-slipper

The "slipper" is white, streaked with a rose-purple colour, and two twisted greenish-yellow side petals that can be streaked with purple. Stem and leaves are green.



Peregrine Falcon

It has a broad black moustache that extends below its eyes, bluish-grey wings, back and shoulders and a white underside marked with horizontal brownish bars.



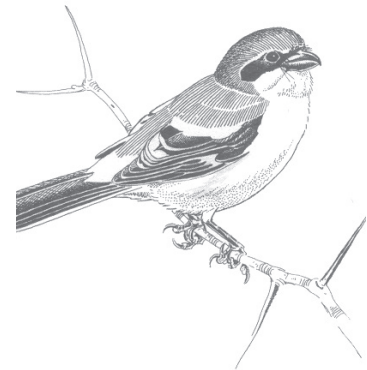
Western silvery aster

A woody stem with silvery-green leaves. The petals are silvery-violet, surrounding a yellowish-brown centre.



Great Plains toad

The top ranges in colour from greyish-yellow to light brown or green. It is covered with warts and large dark brown to olive blotches with white borders.

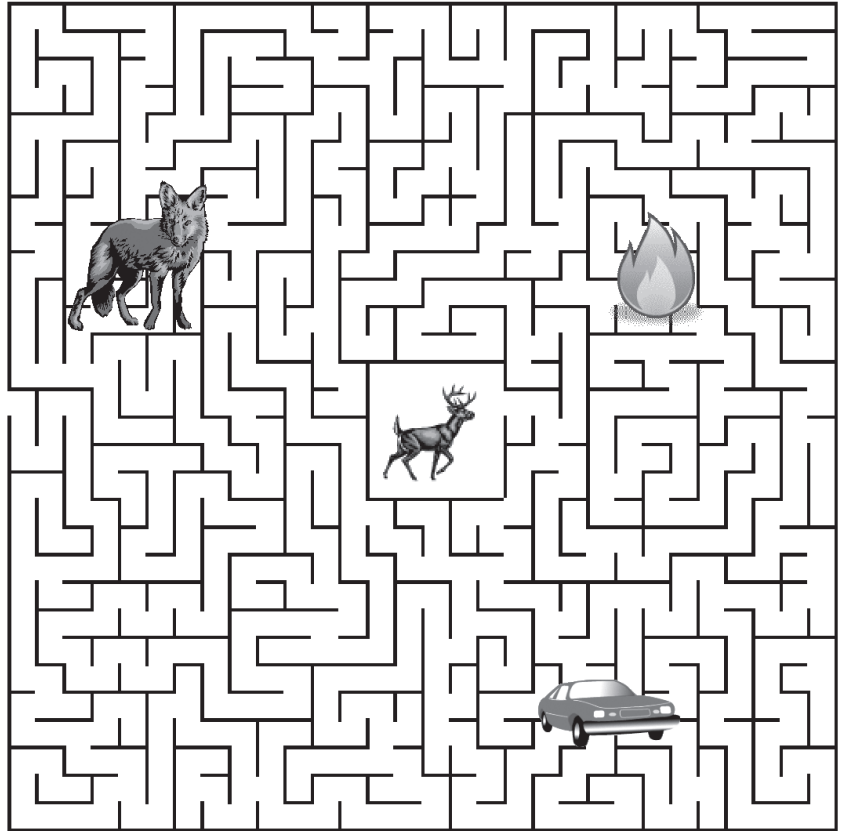


Loggerhead Shrike

White underside, grey head and back, black wings with bold white markings, and a black tail with white outer tail feathers. A narrow, black mask extends from its bill past the eyes.

Run Deer, Run!

There are many dangers that white-tailed deer must avoid in order to stay safe, such as fire, predators and vehicles. Help the deer find it's way out of the maze to safety.



Web of Life

All living things are connected together. They may be food for others (prey) or hunters (predators). Natural elements, such as sun, water, and air are also important. When you connect predators, prey and plants, you get a food chain. When you connect a whole bunch of food chains together, you get a food web.

Can you connect these creatures (animals and plants) and natural elements to form a food web? Ask yourself these questions: what does each animal eat? Is this animal prey for another predator? Does this animal eat plants? Does this animal need water to survive?

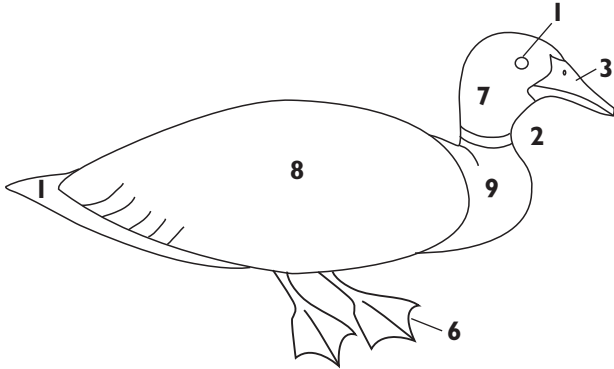
*Hint: try starting with the coyote!



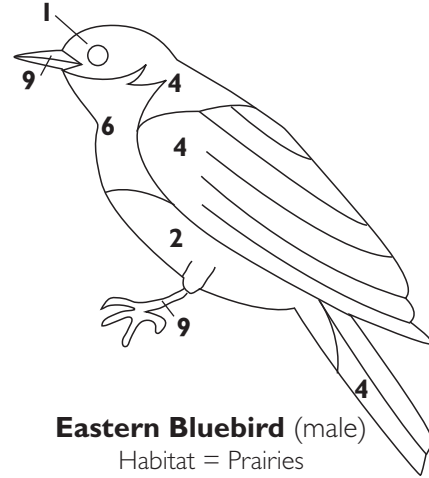
Flight of Colour

Birds Hill Park has many different types of habitats. A habitat includes shelter, water, food and space. All living creatures need a habitat to live in. Different types of habitats attract different types of creatures. Colour by number the birds that live in the different habitats found within Birds Hill Park.

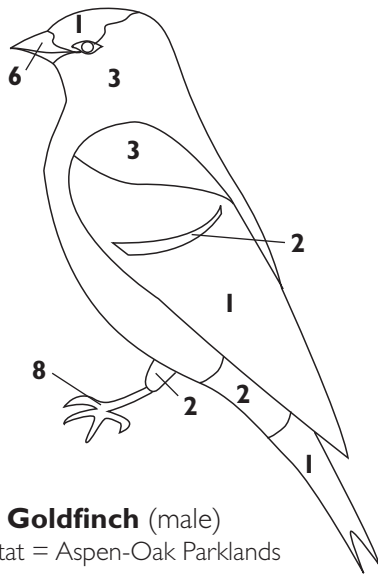
1 - black 2 - white 3 - yellow 4 - blue 5 - red 6 - orange 7 - green 8 - light brown 9 - dark brown



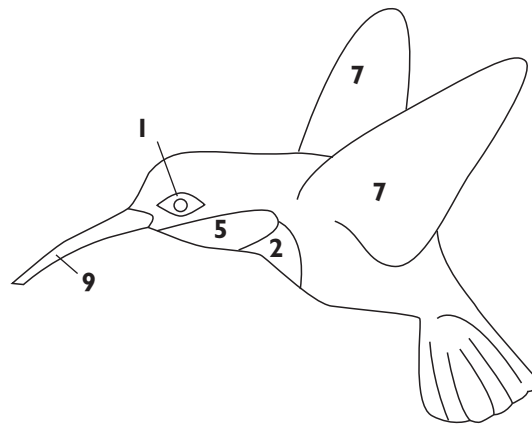
Mallard Duck (male)
Habitat = Lakes / Marshes



Eastern Bluebird (male)
Habitat = Prairies



Goldfinch (male)
Habitat = Aspen-Oak Parklands



Ruby-throated Hummingbird (male)
Habitat = Boreal Forests

Be Bear Smart



Bears follow their nose to find food. When we camp, live or visit bear country, it's our job

to respect bears and keep smells from attracting bears. Unscramble the words to complete each bear aware tip.

Bear Smart Tips

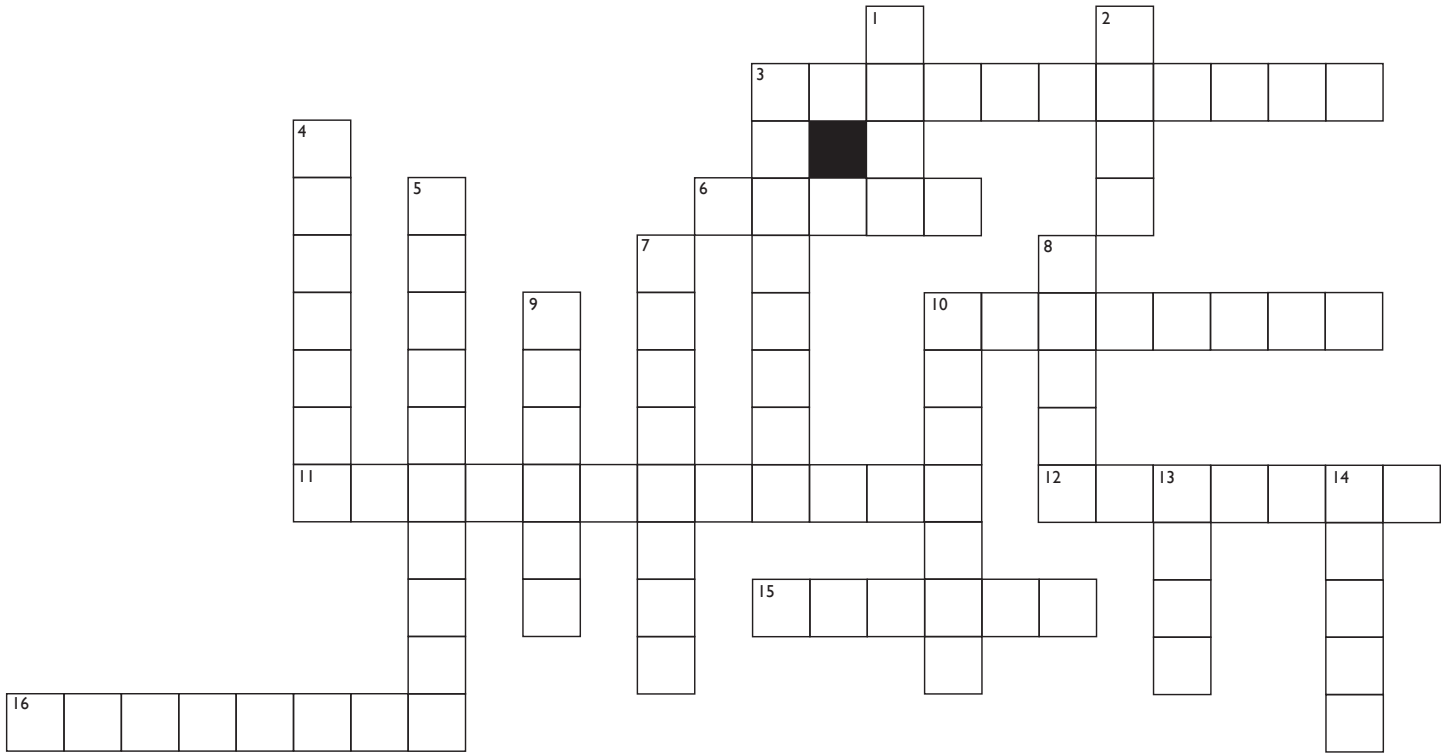
- Feed _____ inside.
- Put _____ away.
- _____ garbage cans.
- Look for bear _____.
- Keep a _____ campsite.
- Clean _____.
- Be bear _____.
- RAEWA**
- Only feed wild _____ in winter.
- Make _____ when hiking.
- Take a _____ when playing outside.

Words

TSEP
ODFO
SWAH
IGSSN
NLACE
CBRASUEBE

SBDIR
SEOIN
DDYUB

Park Explorer Crossword



Across

3. A winter park activity.
6. Colourful, winged creatures that sing.
10. Bats eat this insect.
11. A small endangered owl.
12. Bears deserve our _____ and protection.
15. Oak trees produce these.
16. The biggest danger for white-tailed deer.

Down

1. This attracts bears.
2. An endangered amphibian:
GREAT PLAINS _____.
3. A summer park activity.
4. Connecting a bunch of food chains gives you a _____.
5. Take only pictures, leave only _____.
7. Sand and gravel from the esker were used to build this city.
8. Glaciers left this land formation to form Birds Hill park.
9. A predator not commonly seen in the park.
10. A duck with a green head.
13. Glaciers are made of _____ and ice.
14. A unique place in Birds Hill Park.
_____ bog.

Need a Hint?
All the answers are hidden in your booklet.

Park Explorer Checklist of Activities:

- My Three Favourite Things...
- How Glaciers Shaped the Land
- Habitats along an Esker Ridge
- My Favourite Park Activities
- Move that Sand!
- The Prairies are Our Home
- Run Deer, Run!
- Web of Life
- Flight of Colour
- Be Bear Aware
- Park Explorer Crossword

Park Explorer: _____

Adult: _____

Check off the boxes of each activity you have completed. Return the completed booklet to receive your official pin. (Your book will also be returned to you.)

Did you enjoy doing this activity book? If so, you can do other Junior Naturalist / Park Explorer books at the following locations:

Whiteshell
Spruce Woods
Birds Hill
Hecla
Grand Beach

Completed booklets can be returned to campground offices, park interpreters or mailed to the address below:

Manitoba Parks
Birds Hill Park District
c/o Park Interpreters
68092 PR 206
Cooks Creek, MB, R5M 0C9

YOU ARE ALMOST AN OFFICIAL PARK EXPLORER!

Child's Name _____

Address _____

City _____

Province _____

Postal Code _____