

**DATA SOURCE:**  
Manitoba Hydro; Government of Manitoba; Government of Canada;  
Manitoba Hydro 2010 and 1986 to 2003 Topographic Contour  
Composite

**CREATED BY:**  
Manitoba Hydro - Hydro Power Planning - GIS & Special Studies

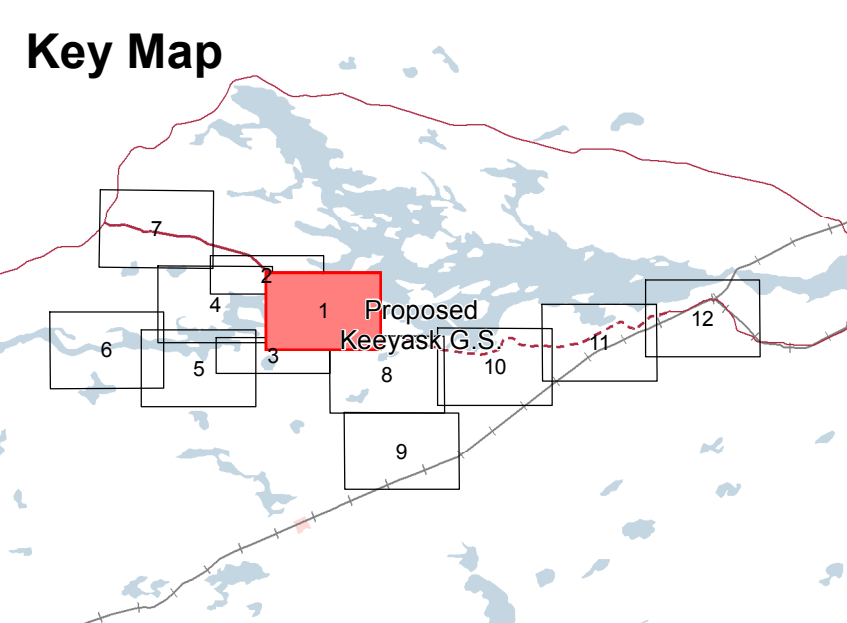
**COORDINATE SYSTEM:**  
UTM NAD 1983 Z15N

**DATE CREATED:**  
01-JUN-13

**REVISION DATE:**  
31-JAN-14

**VERSION NO.:**  
1.0

**QA/QC:**



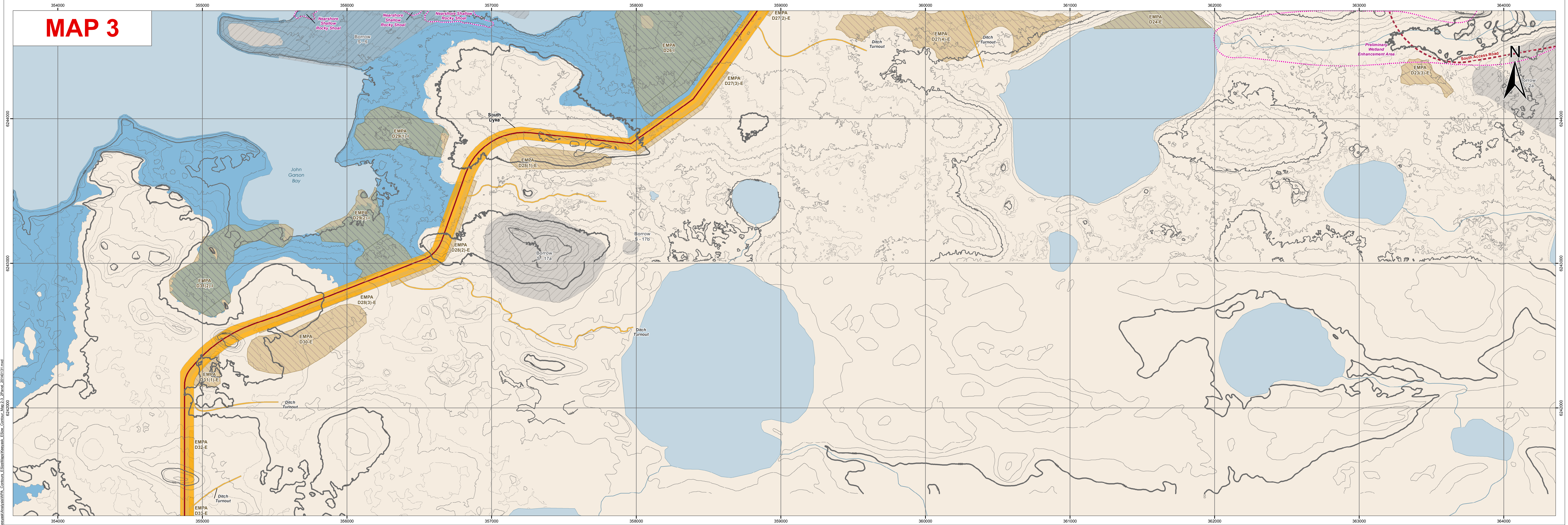
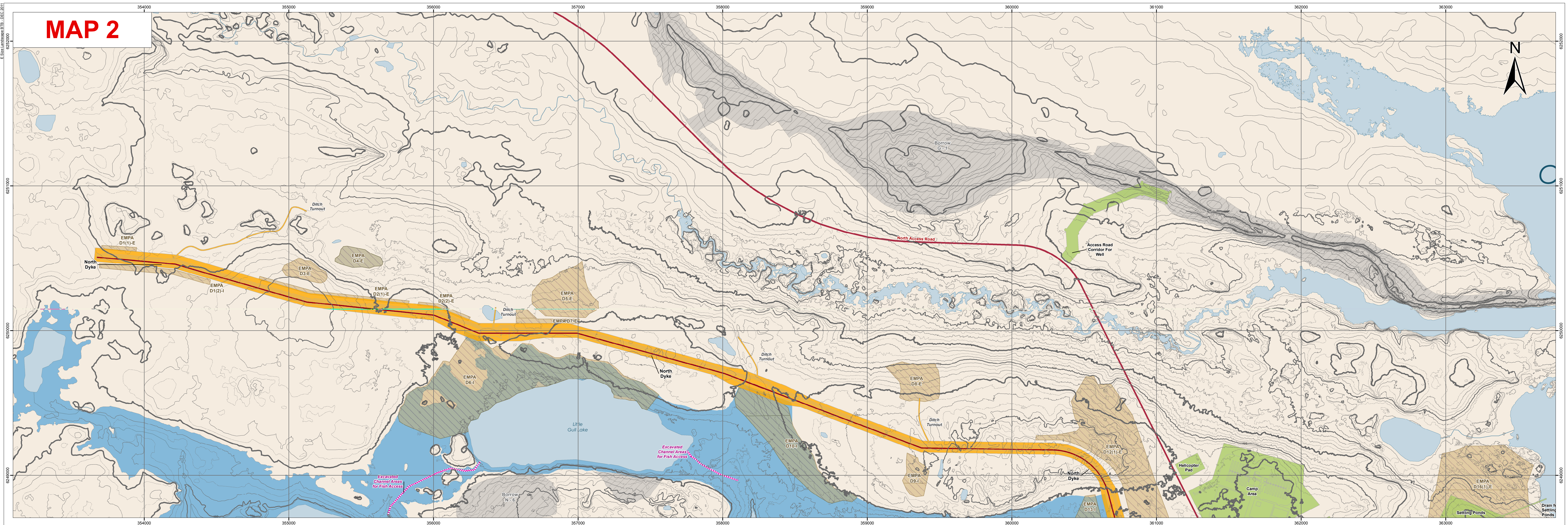
**Legend**

- Contour Elevation**
  - 10 metre (e.g. 150, 160)
  - 5 metre (e.g. 145, 155)
  - 2 metre (e.g. 152, 154)
  - 1 metre (e.g. 151, 153)
- Approach and Discharge Channels
- Principal Structures
- Supporting Infrastructure
- Transmission Project Components
- Borrow Area
- Excavated Material Placement Area (EMPA)
- Environmental Mitigation Area
- Access Road
- Proposed Access Road
- Rail
- Proposed Transmission Line
- Existing Transmission Line
- Boat Launch
- Boat Launch Access Trail
- Portage Route
- Existing Water Area
- Dewatered Area (Potential)
- Initial Flooded Area (159 m) - 95th Percentile Flow

Map illustrates the estimated extent of the dewatered area when the spillway is not in operation. The true extent of this area is uncertain due to the limited bathymetric data.

# Keyask Project Elevation Contours





**DATA SOURCE:**  
Manitoba Hydro; Government of Manitoba; Government of Canada;  
Manitoba Hydro 2010 and 1986 to 2003 Topographic Contour Composite

**CREATED BY:**  
Manitoba Hydro - Hydro Power Planning - GIS & Special Studies

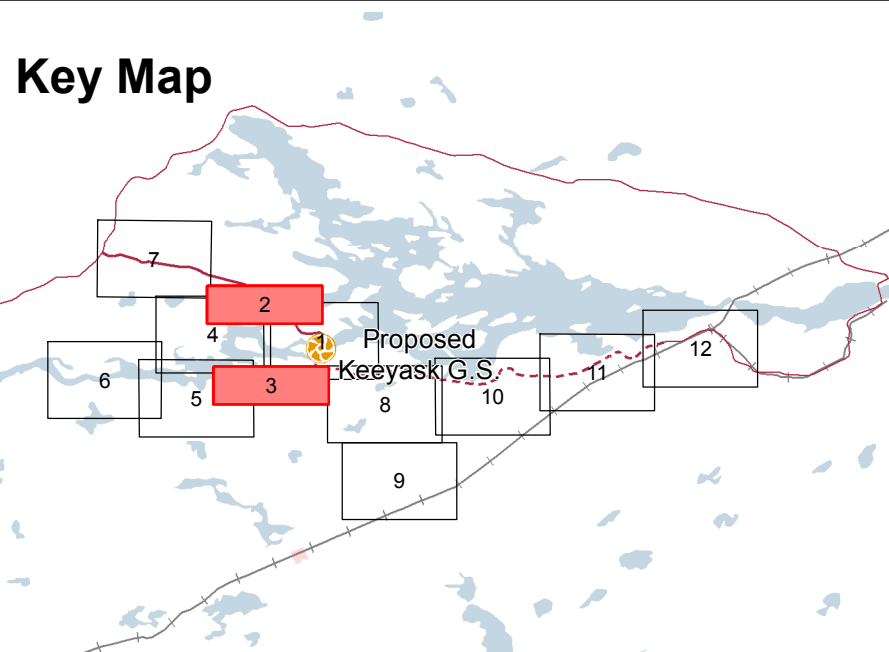
**COORDINATE SYSTEM:**  
UTM NAD 1983 Z15N

**DATE CREATED:**  
23-AUG-12

**REVISION DATE:**  
31-JAN-14

**VERSION NO.:**  
1.0

**QA/QC:**



**Legend**

Contour Elevation	Approach and Discharge Channels	Highway	Boat Launch
10 metre (e.g. 150, 160)	Principal Structures	Proposed Access Road	Portage Route
5 metre (e.g. 145, 155)	Supporting Infrastructure	Rail	Boat Launch Access Trail
2 metre (e.g. 152, 154)	Transmission Project Components	Proposed Transmission Line	Existing Water Area
1 metre (e.g. 151, 153)	Borrow Area	Existing Transmission Line	Dewatered Area (Potential)
	Excavated Material Placement Area (EMPA)	Environmental Mitigation Area	Initial Flooded Area (159 m) - 95th Percentile Flow

## Keyask Project Elevation Contours





**DATA SOURCE:**  
Manitoba Hydro; Government of Manitoba; Government of Canada;  
Manitoba Hydro 2010 and 1986 to 2003 Topographic Contour Composite

**CREATED BY:**  
Manitoba Hydro - Hydro Power Planning - GIS & Special Studies

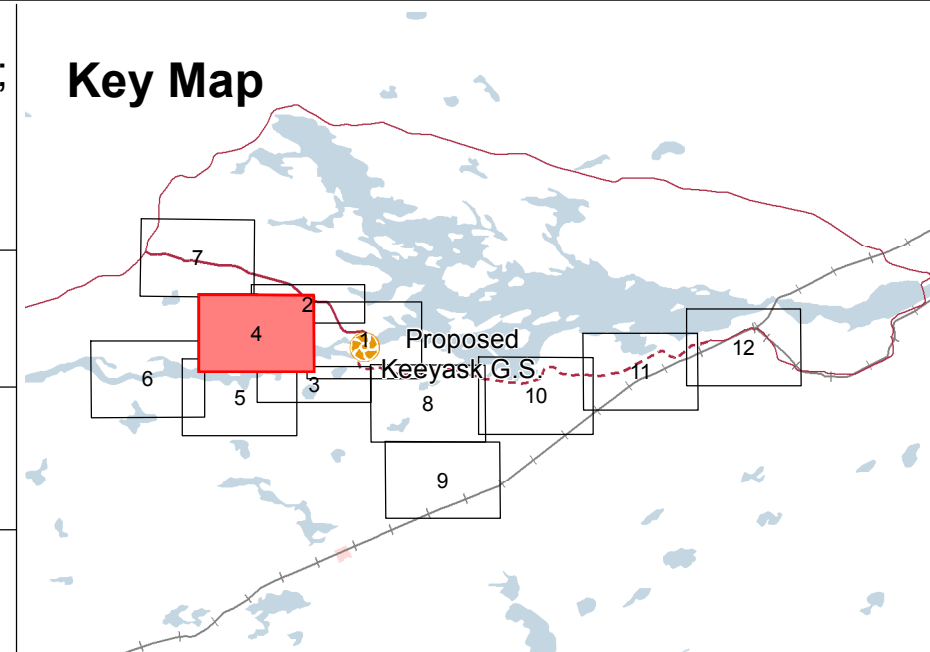
**COORDINATE SYSTEM:**  
UTM NAD 1983 Z15N

**DATE CREATED:**  
01-JUN-13

**REVISION DATE:**  
04-FEB-14

**VERSION NO.:**  
1.0

**QA/QC:**



Legend	
<b>Contour Elevation</b>	<b>Approach and Discharge Channels</b>
10 metre (e.g. 150, 160)	Principal Structures
5 metre (e.g. 145, 155)	Supporting Infrastructure
2 metre (e.g. 152, 154)	Transmission Project Components
1 metre (e.g. 151, 153)	Borrow Area
	Excavated Material Placement Area (EMPA)
	Environmental Mitigation Area
	<b>Access Road</b>
	Proposed Access Road
	Supporting Infrastructure
	Proposed Transmission Line
	Existing Transmission Line
	<b>Boat Launch</b>
	Boat Launch Access Trail
	Portage Route
	Existing Water Area
	Dewatered Area (Potential)
	Initial Flooded Area (159 m) - 95th Percentile Flow

# Keyask Project Elevation Contours