

Influenza Surveillance Report 2019–2020

Week 9 (Feb. 23 – 29, 2020)

Data extracted : Mar. 6, 2020 at 11:00 am

Next report date: Mar. 13, 2020

Provincial Update: Influenza A viruses continue to circulate at a high and increasing level provincially. Laboratory-confirmed influenza outbreaks continue to occur. The other indicators have remained at low levels. In Week 9, the proportion of patients who tested positive for influenza among all tested respiratory patients was 35%. Influenza A detections, a mixture of influenza A(H1N1) and A(H3N2), continued to increase in the last three weeks while influenza B detections continued to decrease. Activity level in syndromic indicators remained similar or decreased slightly from the previous week. Overall, younger populations have been affected more in this season. Almost all influenza B cases and three quarters of influenza A cases are below the age of 65.



National Update: As of Week 8, influenza activity remained high with the majority of indicators remained similar or increased slightly from the previous week. Influenza A(H1N1) was dominating and represented 78% of subtyped influenza A specimens in this week. The highest cumulative hospitalization rates are among children under 5 years of age and adults 65 years of age and older. Based on evaluation by the Sentinel Practitioner Surveillance Network (SPSN), the 2019/2020 influenza vaccine provided substantial protection in the early season in Canada.

International Update: In Week 9, key indicators that track flu activity remained high but decreased for the third week in a row. Severity indicators (hospitalizations and deaths) remained moderate to low overall. Hospitalization rates differ by age group, with high rates among children and young adults.

Laboratory**	This Week
Laboratory-confirmed influenza cases:	
<ul style="list-style-type: none"> Influenza A: 118 Influenza B: 14 	
From Sept.	
<ul style="list-style-type: none"> Influenza A: 886 Influenza B: 673 	

Severity	Week 8
Severe outcomes associated with influenza:	
<ul style="list-style-type: none"> Hospitalizations: 0 ICU* admissions: 0 Deaths: 0 	
From Sept.	
<ul style="list-style-type: none"> Hospitalizations: 368 ICU* admissions: 39 Deaths: 26 	

Outbreaks	This Week
Laboratory-confirmed influenza outbreaks:	
<ul style="list-style-type: none"> Influenza A: 2 Influenza B: 0 Influenza A & B: 0 	
From Sept.	
<ul style="list-style-type: none"> Influenza A: 26 Influenza B: 6 Influenza A & B: 1 	

Calls	This Week
Calls to Influenza Service at Health Links–Info Santé: 30	

Physician Visits	This Week
Visits to sentinel physicians due to ILI: 2.5%	

Vaccine	As of Mar. 6
<ul style="list-style-type: none"> Percentage of Manitoba residents immunized with the seasonal influenza vaccine: 26.1% 	

Antiviral	This Week
Units of antiviral dispensed from pharmacies: 96	

ER Visits	This Week
Respiratory visits to Emergency Department (ED): 163/day	

Note. * ICU admissions were also included in hospitalizations.
 **Laboratory-confirmed influenza cases were reported from the provincial Laboratory Information Management System (LIMS).
 Numbers are subject to change. Missed events in the current report due to a delay of submission to MHSAL will be included in later reports when data become available.

Influenza Surveillance Report 2019–2020

Figure 1. Weekly Cases of Laboratory-Confirmed Influenza, Manitoba

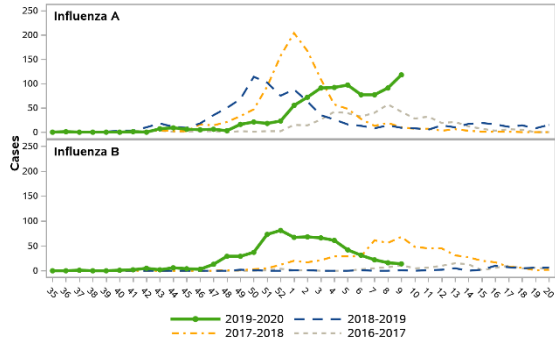


Figure 3. Average Daily Respiratory Visits to Emergency Department and % of Total Visits, Winnipeg Regional Health Authority, Manitoba

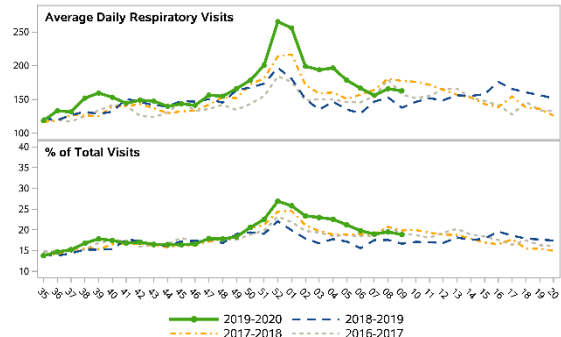


Figure 2. Weekly Influenza and ILI Outbreaks, Manitoba

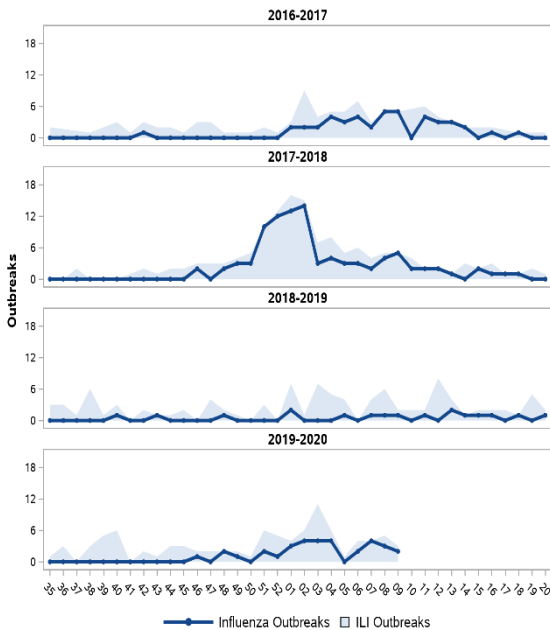


Table 1. Antiviral Resistance of Isolates by Influenza Type and Subtype since September 1, 2019

		Oseltamivir		Zanamivir	
		R*	S**	R*	S**
Canada	A(H3N2)	0	150	0	150
	A(H1N1)	1	206	0	208
	B	0	250	0	250
Manitoba	A(H3N2)	0	6	0	6
	A(H1N1)	0	19	0	19
	B	0	39	0	39

* Resistant **Sensitive

Table 2. Influenza Strain Characterization reported by National Microbiology Laboratory since September 1, 2019

Strain	Number of viruses	
	Canada	Manitoba
Influenza A (H3N2) A/Kansas/14/2017-like	55	1
Influenza A (H1N1) A/Brisbane/02/2018-like	474	26
Influenza B B/Colorado/06/2017-like	180	17
Influenza B B/Phuket/3073/13-like	2	0

As per the World Health Organization (WHO), all seasonal quadrivalent influenza vaccines for 2019–2020 in the northern hemisphere contain those strains.