

DATA SOURCE:
Manitoba Hydro; Government of Manitoba; Government of Canada;
Manitoba Hydro 2010 and 1986 to 2003 Topographic Contour Composite

CREATED BY:
Manitoba Hydro - Hydro Power Planning - GIS & Special Studies

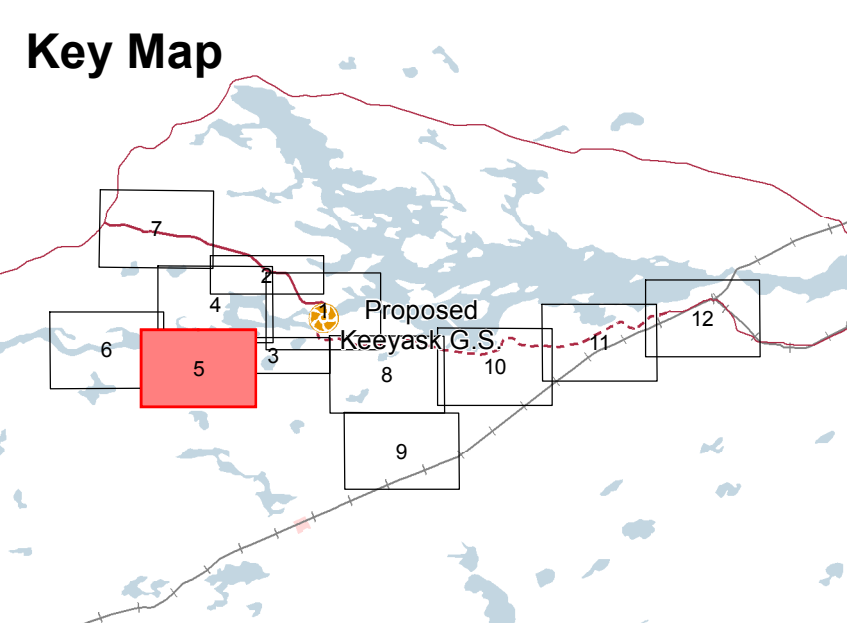
COORDINATE SYSTEM:
UTM NAD 1983 Z15N

DATE CREATED:
01-JUN-13

REVISION DATE:
04-FEB-14

VERSION NO.:
1.0

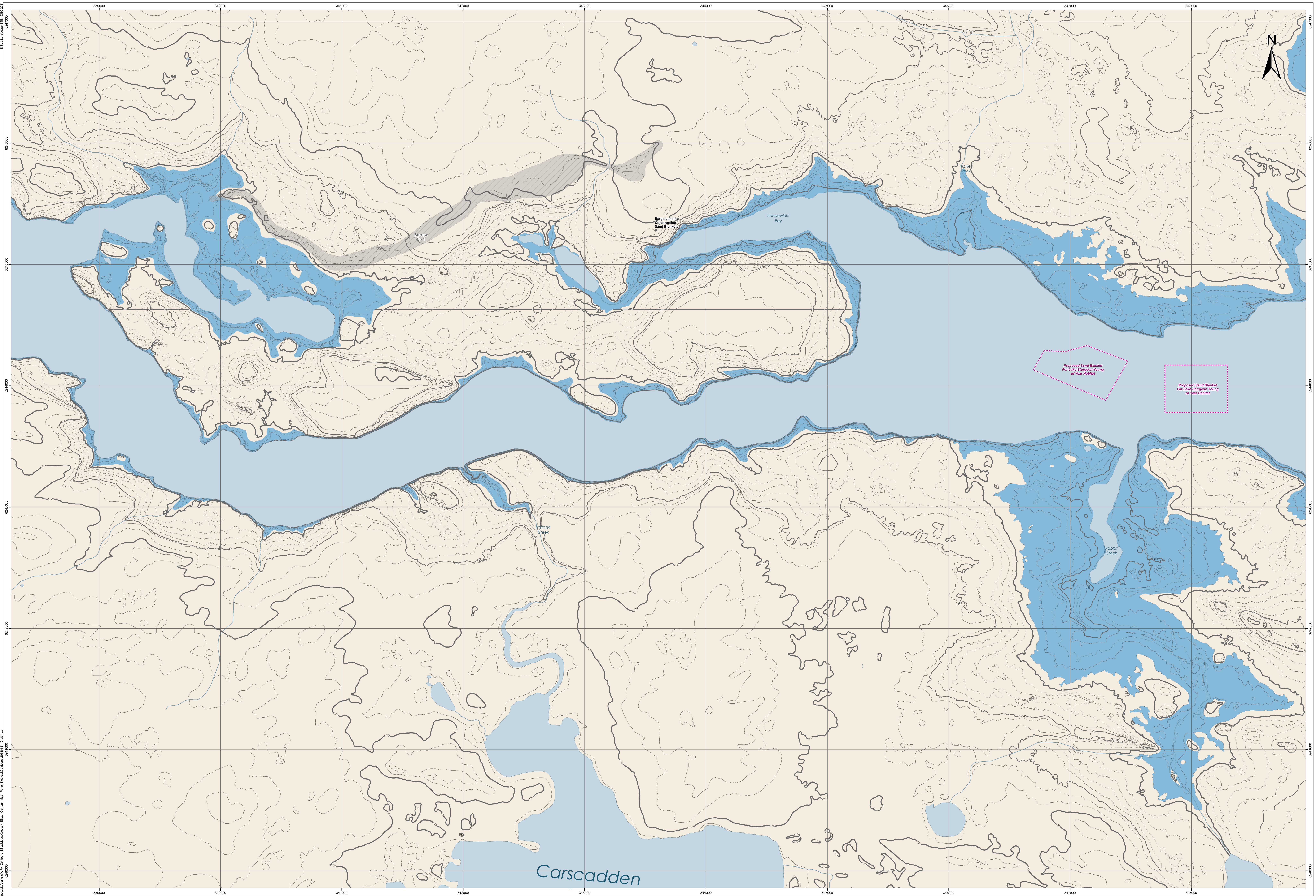
QA/QC:



Legend

- Contour Elevation**
- 10 metre (e.g. 150, 160)
 - 5 metre (e.g. 145, 155)
 - 2 metre (e.g. 152, 154)
 - 1 metre (e.g. 151, 153)
- Approach and Discharge Channels
 - Principal Structures
 - Supporting Infrastructure
 - Transmission Project Components
 - Borrow Area
 - Excavated Material Placement Area (EMPA)
 - Environmental Mitigation Area
- Access Road
 - Proposed Access Road
 - Rail
 - Proposed Transmission Line
 - Existing Transmission Line
- Boat Launch
 - Boat Launch Access Trail
 - Portage Route
 - Existing Water Area
 - Dewatered Area (Potential)
 - Initial Flooded Area (159 m) - 95th Percentile Flow

**Keyask Project
Elevation Contours**



DATA SOURCE:
Manitoba Hydro; Government of Manitoba; Government of Canada;
Manitoba Hydro 2010 and 1986 to 2003 Topographic Contour
Composite

CREATED BY:
Manitoba Hydro - Hydro Power Planning - GIS & Special Studies

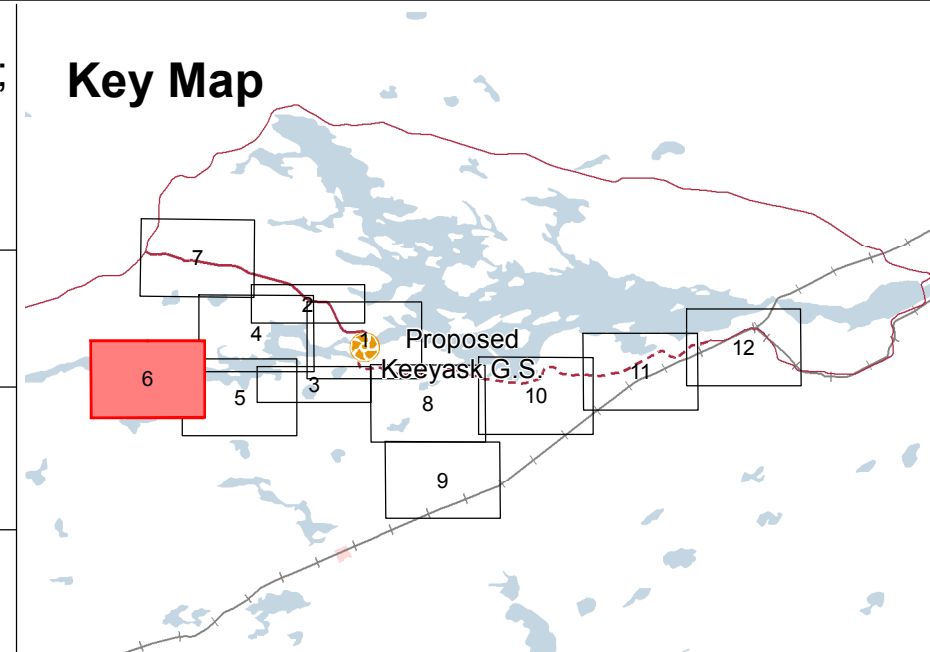
COORDINATE SYSTEM:
UTM NAD 1983 Z15N

DATE CREATED:
01-JUN-13

REVISION DATE:
04-FEB-14

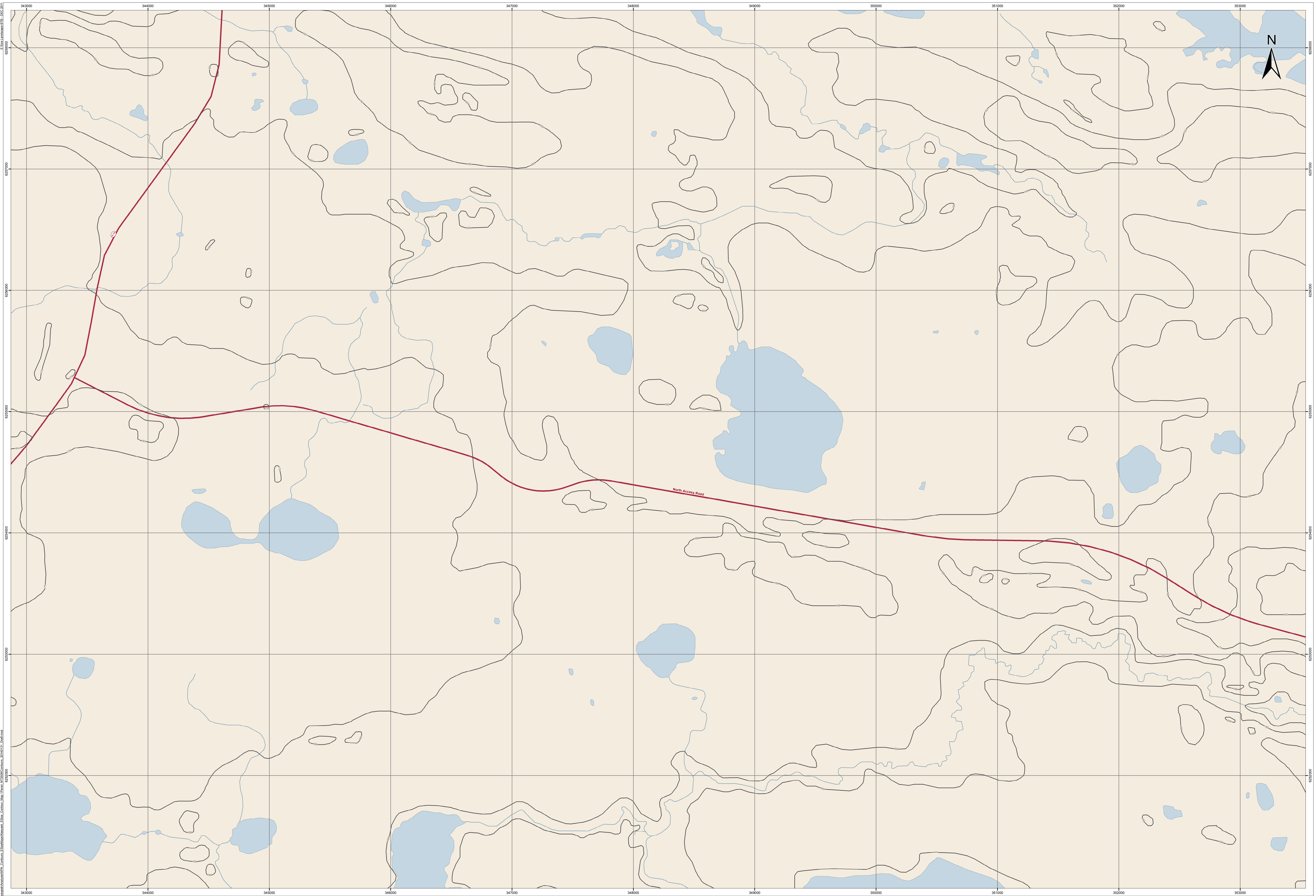
VERSION NO.:
1.0

QA/QC:



| Legend | |
|--------------------------|---|
| Contour Elevation | |
| 10 metre (e.g. 150, 160) | Approach and Discharge Channels |
| 5 metre (e.g. 145, 155) | Principal Structures |
| 2 metre (e.g. 152, 154) | Supporting Infrastructure |
| 1 metre (e.g. 151, 153) | Transmission Project Components |
| | Borrow Area |
| | Excavated Material Placement Area (EMPA) |
| | Environmental Mitigation Area |
| | Access Road |
| | Proposed Access Road |
| | Rail |
| | Proposed Transmission Line |
| | Existing Transmission Line |
| | Boat Launch |
| | Boat Launch Access Trail |
| | Portage Route |
| | Existing Water Area |
| | Dewatered Area (Potential) |
| | Initial Flooded Area (159 m) - 95th Percentile Flow |

Keyask Project Elevation Contours



DATA SOURCE:
Manitoba Hydro; Government of Manitoba; Government of Canada;
NTS 50K Contours

CREATED BY:
Manitoba Hydro - Hydro Power Planning - GIS & Special Studies

COORDINATE SYSTEM:
UTM NAD 1983 Z15N

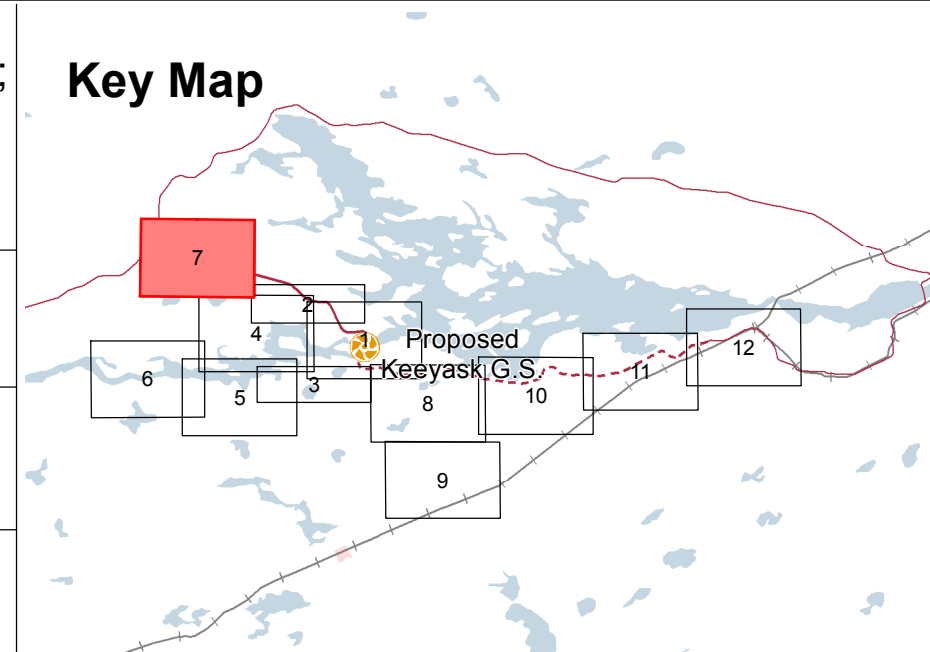
DATE CREATED:
01-JUN-13

REVISION DATE:
04-FEB-14

VERSION NO.:
1.0

QA/QC:

0 0.15 0.3 Kilometres
0 0.25 0.5 Miles



Legend

Contour Elevation
3 metre

| | | |
|--|---|----------------------------|
| Approach and Discharge Channels | Access Road | Boat Launch |
| Principal Structures | Proposed Access Road | Boat Launch Access Trail |
| Supporting Infrastructure | Rail | Portage Route |
| Transmission Project Components | Proposed Transmission Line | Existing Water Area |
| Borrow Area | Existing Transmission Line | Dewatered Area (Potential) |
| Excavated Material Placement Area (EMPA) | Initial Flooded Area (159 m) - 95th Percentile Flow | |
| Environmental Mitigation Area | | |

Keeyask Project Elevation Contours