

Catalogue no. 23-011-X

Sheep Statistics

2009



Statistics
Canada

Statistique
Canada

Canada

How to obtain more information

For information about this product or the wide range of services and data available from Statistics Canada, visit our website at www.statcan.gc.ca, e-mail us at infostats@statcan.gc.ca, or telephone us, Monday to Friday from 8:30 a.m. to 4:30 p.m., at the following numbers:

Statistics Canada's National Contact Centre

Toll-free telephone (Canada and the United States):

Inquiries line	1-800-263-1136
National telecommunications device for the hearing impaired	1-800-363-7629
Fax line	1-877-287-4369

Local or international calls:

Inquiries line	1-613-951-8116
Fax line	1-613-951-0581

Depository Services Program

Inquiries line	1-800-635-7943
Fax line	1-800-565-7757

To access this product

This product, Catalogue no. 23-011-X, is available free in electronic format. To obtain a single issue, visit our website at www.statcan.gc.ca and select "Publications."

Standards of service to the public

Statistics Canada is committed to serving its clients in a prompt, reliable and courteous manner. To this end, Statistics Canada has developed *standards of service* that its employees observe. To obtain a copy of these service standards, please contact Statistics Canada toll-free at 1-800-263-1136. The service standards are also published on www.statcan.gc.ca under "About us" > "Providing services to Canadians."

Sheep Statistics

2009

Published by authority of the Minister responsible for Statistics Canada

© Minister of Industry, 2009

All rights reserved. The content of this electronic publication may be reproduced, in whole or in part, and by any means, without further permission from Statistics Canada, subject to the following conditions: that it be done solely for the purposes of private study, research, criticism, review or newspaper summary, and/or for non-commercial purposes; and that Statistics Canada be fully acknowledged as follows: Source (or "Adapted from", if appropriate): Statistics Canada, year of publication, name of product, catalogue number, volume and issue numbers, reference period and page(s). Otherwise, no part of this publication may be reproduced, stored in a retrieval system or transmitted in any form, by any means—electronic, mechanical or photocopy—or for any purposes without prior written permission of Licensing Services, Client Services Division, Statistics Canada, Ottawa, Ontario, Canada K1A 0T6.

August 2009

Catalogue no. 23-011-X, vol. 8, no. 2

ISSN 1705-1223

Frequency: Semi-Annual

Ottawa

Cette publication est également disponible en français.

Note of appreciation

Canada owes the success of its statistical system to a long standing partnership between Statistics Canada, the citizens of Canada, its businesses, governments and other institutions. Accurate and timely statistical information could not be produced without their continued cooperation and goodwill.

User information

Symbols

The following standard symbols are used in Statistics Canada publications:

- . not available for any reference period
- .. not available for a specific reference period
- ... not applicable
- 0 true zero or a value rounded to zero
- 0^s value rounded to 0 (zero) where there is a meaningful distinction between true zero and the value that was rounded
- p preliminary
- r revised
- x suppressed to meet the confidentiality requirements of the *Statistics Act*
- E use with caution
- F too unreliable to be published

Table of contents

Highlights	5
Analysis	6
Livestock Statistics, as of July 1st 2009	6
Sheep inventory remains flat	6
Related products	8
Statistical tables	
1 Sheep and lambs on farms	11
1-1 Canada	11
1-2 Newfoundland and Labrador	11
1-3 Prince Edward Island	12
1-4 Nova Scotia	12
1-5 New Brunswick	13
1-6 Quebec	13
1-7 Ontario	14
1-8 Eastern provinces	14
1-9 Manitoba	15
1-10 Saskatchewan	15
1-11 Alberta	16
1-12 British Columbia	16
1-13 Western provinces	17
2 Sheep and lambs, supply and demand	18
2-1 2004	18
2-2 2005	19
2-3 2006	20
2-4 2007	21
2-5 2008	22
2-6 2009	23
3 Sheep and lamb production, Canada	24
4 Prices, lambs, weighted average, Toronto	25
5 Shorn wool production, disposition and farm value	26

Table of contents – continued

6	Sheep and lambs: number by class	27
6-1	total for United States and Canada, July 1	27
6-2	United States, July 1	27
6-3	Canada, July 1	28
7	Supply and disposition of red meat, Canada	28
7-1	Veal	28
7-2	Beef	29
7-3	Beef and veal total	29
7-4	Pork	30
7-5	Mutton and lamb	30
7-6	Offal	31
7-7	Total red meat	31

Data quality, concepts and methodology

Concepts and methodology	32
--------------------------	----

Charts

1.	Sheep exports, Canada, 2000 to 2009	7
2.	Mutton and lamb production versus imports, Canada, 1999 to 2008	7

Highlights

- Total sheep inventory amounted to 1.1 million, virtually unchanged since July 2008.
- In 2003, the export market for sheep collapsed, and has remained virtually non-existent since then.
- Mutton and lamb imports continue to be greater than domestic production.

Analysis

Livestock Statistics, as of July 1st 2009

As of July 1, 2009, the number of hogs and cattle on Canadian farms was down from the same date a year earlier, while the number of sheep remained virtually unchanged.

Text table 1
Livestock inventories at July 1

	Cattle		Hogs		Sheep	
	2008	2009	2008	2009	2008	2009
	thousands of head					
Canada	15,195	14,840	12,980	12,105	1,062	1,062
Atlantic	279	251	187	148	41	42
Quebec	1,375	1,385	4,075	3,870	290	285
Ontario	1,881	1,829	3,237	3,101	295	315
Manitoba	1,515	1,430	2,720	2,530	66	71
Saskatchewan	3,385	3,370	971	810	125	114
Alberta	6,010	5,870	1,670	1,530	185	177
British Columbia	750	705	120	116	60	58

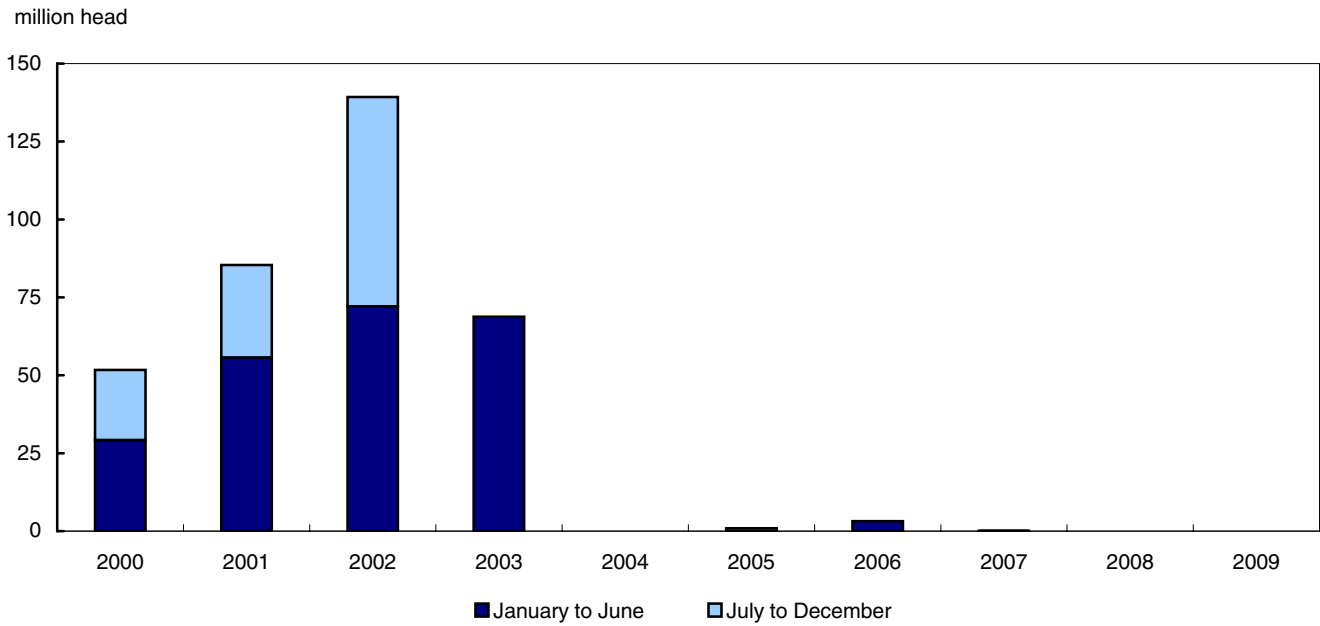
Note(s): Figures may not add up to totals because of rounding.

Sheep inventory remains flat

The sheep industry has not experienced any growth during the past two years. As of July 1, the total sheep inventory amounted to 1.1 million, virtually unchanged since July 2008. Some regional variations included a marginal decrease in Quebec with larger decreases in Saskatchewan, Alberta, and British Columbia. Increases in inventory occurred in Ontario and Manitoba, increasing 6.8% and 7.6% respectively. Sheep inventories increased in the Atlantic provinces due to the development of local market niches.

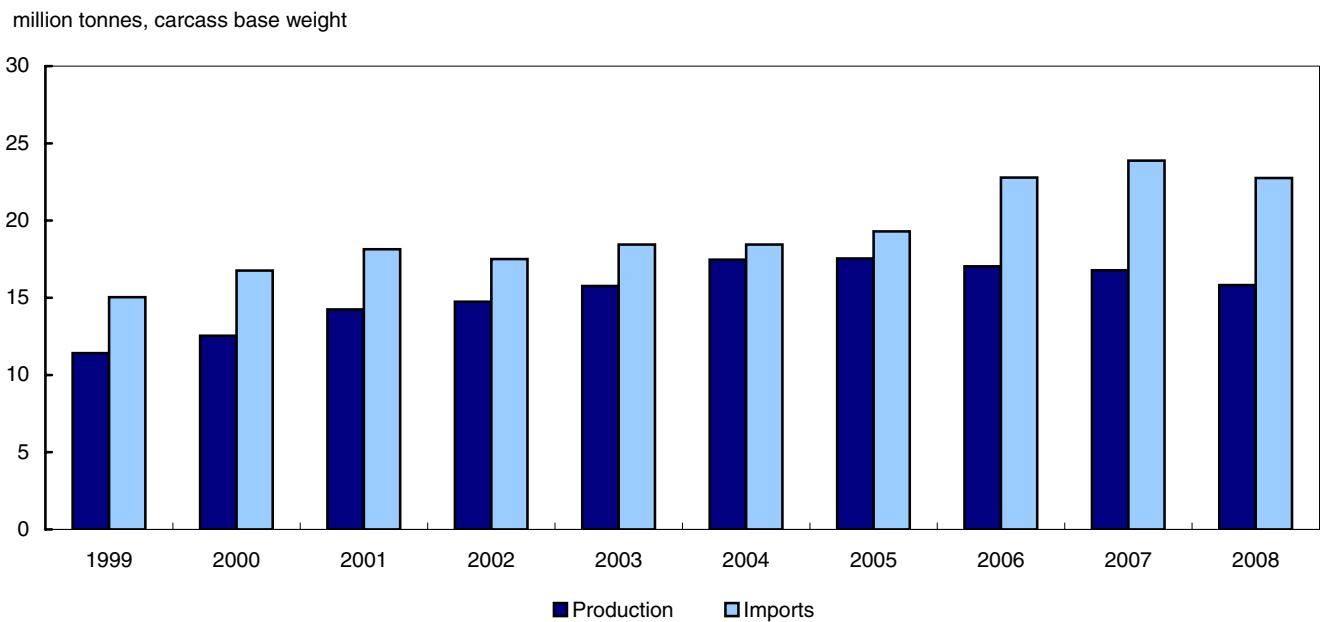
The drought experienced in Western Canada in 2001 and 2002, increased exports to a record high as producers were sending sheep south. In 2003, the export market for sheep collapsed, and has remained virtually non-existent since then.

Chart 1
Sheep exports, Canada, 2000 to 2009



Mutton and lamb imports continue to be greater than domestic production. The production of mutton and lamb in Canada partially meets local and regional demand; the rest is supplied by rising imports.

Chart 2
Mutton and lamb production versus imports, Canada, 1999 to 2008



Related products

Selected publications from Statistics Canada

21-020-X	Food Statistics
21-206-X	Statistics on Income of Farm Operators
21-207-X	Statistics on Income of Farm Families
21-208-X	Statistics on Revenues and Expenses of Farms
23-009-X	Stocks of Frozen and Chilled Meats
23-501-X	Livestock Feed Requirements Study

Selected CANSIM tables from Statistics Canada

002-0010	Supply and disposition of food in Canada, annual
002-0011	Food available in Canada, annual
002-0019	Food available by major groups in Canada, annual
003-0004	Number of hogs on farms at end of quarter, quarterly
003-0016	Shorn wool statistics, annual
003-0026	Cattle and calves, farm and meat production, annual
003-0028	Hogs, sheep and lambs, farm and meat production, annual
003-0030	Number of calves born, semi-annual
003-0031	Number of sheep and lambs on farms, annual
003-0032	Number of cattle, by class and farm type, annual
003-0080	Nutrients in the food supply, by source of nutritional equivalent and commodity, annual
003-0083	Cattle statistics, supply and demand of cattle, annual
003-0084	Cattle prices, steers, monthly
003-0085	Cattle and calves, number by class and calf crop, United States, annual
003-0086	Cattle, weighted average prices, steers, annual

003-0087	Hogs statistics, sows farrowed, pigs born and sows bred to farrow, quarterly
003-0088	Hogs statistics, supply and disposition of hogs, quarterly
003-0089	Hogs statistics, number of farms reporting and average number of hogs per farm, quarterly
003-0090	Hogs statistics, prices, monthly
003-0091	Hogs statistics, weighted average prices, annual
003-0092	Hogs and pigs statistics, inventory number by class and quarter, United States and Canada, quarterly
003-0093	Hogs and pigs statistics, inventory number by class and quarter, United States, quarterly
003-0094	Sheep statistics, supply and disposition of sheep and lambs, annual
003-0095	Sheep statistics, prices of lambs, monthly
003-0096	Sheep statistics, weighted average prices, lambs, annual
003-0097	Sheep statistics, quantity of wool purchased, used on farms, price and farm value, annual

Selected surveys from Statistics Canada

3460	Livestock Survey
------	------------------

Selected summary tables from Statistics Canada

- *Cattle inventories, by province*
- *Pig inventories, by province (quarterly)*
- *Sheep inventories, by province*

Statistical tables

**Table 1-1
Sheep and lambs on farms — Canada**

	Rams	Ewes	Replacement lambs	Market lambs	Total
thousands of head					
At January 1					
2003	28.8	612.5	96.0	238.0	975.3
2004	27.3	613.4	94.1	259.4	994.2
2005	26.6	606.2	93.9	250.9	977.6
2006	25.7	563.2	87.1	217.8	893.8
2007	26.0	558.1	88.2	206.8	879.1
2008	24.2	532.5	81.8	186.8	825.3
2009	23.8	522.1	77.9	184.4	808.2
At July 1					
2003	30.2	640.6	130.0	446.4	1,247.2
2004	27.9	606.6	114.8	491.2	1,240.5
2005	26.9	603.2	104.8	455.6	1,190.5
2006	25.8	589.6	97.9	437.9	1,151.2
2007	25.7	558.2	96.3	415.5	1,095.7
2008	24.3	546.6	94.2	396.9	1,062.0
2009	23.1	548.9	93.2	397.2	1,062.4
percentage change from previous year					
At January 1					
2003	-0.7	-0.5	-13.0	-0.3	-1.8
2004	-5.2	0.1	-2.0	9.0	1.9
2005	-2.6	-1.2	-0.2	-3.3	-1.7
2006	-3.4	-7.1	-7.2	-13.2	-8.6
2007	1.2	-0.9	1.3	-5.1	-1.6
2008	-6.9	-4.6	-7.3	-9.7	-6.1
2009	-1.7	-2.0	-4.8	-1.3	-2.1
At July 1					
2003	-2.6	0.7	-2.8	-1.0	-0.4
2004	-7.6	-5.3	-11.7	10.0	-0.5
2005	-3.6	-0.6	-8.7	-7.2	-4.0
2006	-4.1	-2.3	-6.6	-3.9	-3.3
2007	-0.4	-5.3	-1.6	-5.1	-4.8
2008	-5.4	-2.1	-2.2	-4.5	-3.1
2009	-4.9	0.4	-1.1	0.1	0.0

**Table 1-2
Sheep and lambs on farms — Newfoundland and Labrador**

	Rams	Ewes	Replacement lambs	Market lambs	Total
thousands of head					
At January 1					
2003	0.2	3.2	0.5	1.0	4.9
2004	0.1	3.0	0.5	0.9	4.5
2005	0.1	2.6	0.4	0.9	4.0
2006	0.1	2.2	0.4	0.9	3.6
2007	0.1	1.9	0.4	0.8	3.2
2008	0.1	2.0	0.3	0.7	3.1
2009	0.1	2.1	0.3	0.8	3.3
At July 1					
2003	0.2	3.2	0.8	3.0	7.2
2004	0.2	2.8	0.7	2.7	6.4
2005	0.2	2.5	0.6	2.4	5.7
2006	0.1	2.1	0.5	2.0	4.7
2007	0.1	1.9	0.5	1.7	4.2
2008	0.1	2.0	0.3	1.8	4.2
2009	0.1	1.8	0.5	1.6	4.0

**Table 1-3
Sheep and lambs on farms — Prince Edward Island**

	Rams	Ewes	Replacement lambs	Market lambs	Total
thousands of head					
At January 1					
2003	0.1	1.7	0.3	0.5	2.6
2004	0.2	1.8	0.3	0.9	3.2
2005	0.2	1.8	0.3	0.6	2.9
2006	0.1	1.9	0.3	1.1	3.4
2007	0.2	2.0	0.3	0.9	3.4
2008	0.1	2.0	0.2	0.8	3.1
2009	0.1	2.0	0.5	0.8	3.4
At July 1					
2003	0.1	1.7	0.4	1.7	3.9
2004	0.1	1.8	0.3	1.9	4.1
2005	0.1	1.8	0.3	1.8	4.0
2006	0.1	1.9	0.4	1.6	4.0
2007	0.1	1.9	0.2	1.4	3.6
2008	0.1	1.7	0.2	1.5	3.5
2009	0.1	2.0	0.2	1.8	4.1

**Table 1-4
Sheep and lambs on farms — Nova Scotia**

	Rams	Ewes	Replacement lambs	Market lambs	Total
thousands of head					
At January 1					
2003	0.6	12.5	2.4	2.5	18.0
2004	0.6	12.7	2.4	2.8	18.5
2005	0.6	12.8	2.0	3.2	18.6
2006	0.6	12.2	1.9	3.8	18.5
2007	0.6	11.5	2.2	4.3	18.6
2008	0.5	11.0	2.0	4.0	17.5
2009	0.6	11.5	2.2	3.5	17.8
At July 1					
2003	0.5	12.5	2.2	11.5	26.7
2004	0.5	12.2	1.8	11.0	25.5
2005	0.6	12.3	2.2	10.9	26.0
2006	0.6	11.6	2.1	10.9	25.2
2007	0.6	12.5	2.5	11.2	26.8
2008	0.5	11.5	2.1	10.5	24.6
2009	0.5	12.0	2.2	11.5	26.2

**Table 1-5
Sheep and lambs on farms — New Brunswick**

	Rams	Ewes	Replacement lambs	Market lambs	Total
thousands of head					
At January 1					
2003	0.2	4.6	0.7	1.7	7.2
2004	0.2	4.4	0.6	1.8	7.0
2005	0.2	4.1	0.6	1.7	6.6
2006	0.2	3.8	0.6	1.7	6.3
2007	0.2	3.6	0.5	1.6	5.9
2008	0.2	4.0	0.6	1.8	6.6
2009	0.2	3.6	0.4	1.5	5.7
At July 1					
2003	0.3	5.2	0.8	3.1	9.4
2004	0.3	4.6	0.9	3.7	9.5
2005	0.2	4.0	0.6	3.0	7.8
2006	0.2	3.6	0.7	2.8	7.3
2007	0.2	4.0	0.8	3.1	8.1
2008	0.2	4.0	0.9	3.6	8.7
2009	0.2	3.5	0.6	3.8	8.1

**Table 1-6
Sheep and lambs on farms — Quebec**

	Rams	Ewes	Replacement lambs	Market lambs	Total
thousands of head					
At January 1					
2003	5.6	160.5	22.0	41.9	230.0
2004	5.9	170.0	24.1	50.0	250.0
2005	6.0	167.7	23.9	49.9	247.5
2006	6.0	170.6	23.0	52.4	252.0
2007	6.1	167.8	22.1	52.0	248.0
2008	6.0	166.0	22.0	51.0	245.0
2009	6.0	163.2	23.0	51.8	244.0
At July 1					
2003	6.0	174.5	31.0	80.5	292.0
2004	5.9	168.0	31.1	85.0	290.0
2005	6.0	179.1	28.0	88.9	302.0
2006	6.1	181.5	25.5	93.9	307.0
2007	5.9	171.6	26.6	90.9	295.0
2008	5.9	170.0	26.6	87.5	290.0
2009	5.8	171.3	24.2	83.7	285.0

**Table 1-7
Sheep and lambs on farms — Ontario**

	Rams	Ewes	Replacement lambs	Market lambs	Total
thousands of head					
At January 1					
2003	8.8	180.0	28.3	62.9	280.0
2004	8.0	183.6	21.9	56.5	270.0
2005	7.2	177.8	24.0	56.0	265.0
2006	7.0	158.9	21.5	37.6	225.0
2007	7.0	159.5	23.3	45.2	235.0
2008	7.2	159.2	23.5	40.1	230.0
2009	6.9	150.9	20.0	37.2	215.0
At July 1					
2003	8.5	185.7	37.0	121.8	353.0
2004	8.5	179.3	32.2	120.0	340.0
2005	7.7	166.0	26.1	110.2	310.0
2006	7.2	158.6	26.8	118.4	311.0
2007	7.8	159.2	27.9	110.1	305.0
2008	7.3	154.1	28.6	105.0	295.0
2009	7.0	160.0	28.4	119.6	315.0

**Table 1-8
Sheep and lambs on farms — Eastern provinces**

	Rams	Ewes	Replacement lambs	Market lambs	Total
thousands of head					
At January 1					
2003	15.5	362.5	54.2	110.5	542.7
2004	15.0	375.5	49.8	112.9	553.2
2005	14.3	366.8	51.2	112.3	544.6
2006	14.0	349.6	47.7	97.5	508.8
2007	14.2	346.3	48.8	104.8	514.1
2008	14.1	344.2	48.6	98.4	505.3
2009	13.9	333.3	46.4	95.6	489.2
At July 1					
2003	15.6	382.8	72.2	221.6	692.2
2004	15.5	368.7	67.0	224.3	675.5
2005	14.8	365.7	57.8	217.2	655.5
2006	14.3	359.3	56.0	229.6	659.2
2007	14.7	351.1	58.5	218.4	642.7
2008	14.1	343.3	58.7	209.9	626.0
2009	13.7	350.6	56.1	222.0	642.4

**Table 1-9
Sheep and lambs on farms — Manitoba**

	Rams	Ewes	Replacement lambs	Market lambs	Total
thousands of head					
At January 1					
2003	1.9	39.1	4.6	28.4	74.0
2004	1.9	41.5	6.0	32.6	82.0
2005	1.8	39.9	5.0	23.3	70.0
2006	1.6	34.5	4.5	24.4	65.0
2007	1.5	33.9	4.2	24.4	64.0
2008	1.5	33.2	4.0	23.3	62.0
2009	1.4	31.5	4.0	24.1	61.0
At July 1					
2003	2.0	38.3	7.8	33.9	82.0
2004	2.0	36.3	6.2	37.5	82.0
2005	1.7	35.5	6.0	34.8	78.0
2006	1.5	34.1	5.0	27.9	68.5
2007	1.6	33.4	5.5	29.5	70.0
2008	1.5	31.9	4.8	27.8	66.0
2009	1.4	34.5	5.5	29.6	71.0

**Table 1-10
Sheep and lambs on farms — Saskatchewan**

	Rams	Ewes	Replacement lambs	Market lambs	Total
thousands of head					
At January 1					
2003	2.8	60.0	12.5	39.7	115.0
2004	2.7	61.7	13.6	47.0	125.0
2005	3.0	65.2	14.1	47.7	130.0
2006	2.8	51.0	13.7	37.5	105.0
2007	3.0	51.7	13.9	26.4	95.0
2008	2.8	49.4	12.6	23.2	88.0
2009	2.5	46.1	9.4	24.0	82.0
At July 1					
2003	3.6	67.0	15.0	59.4	145.0
2004	3.2	68.1	14.5	74.2	160.0
2005	3.0	66.5	14.0	58.5	142.0
2006	2.7	64.2	13.8	52.3	133.0
2007	2.8	55.0	10.0	52.2	120.0
2008	2.8	55.5	12.4	54.3	125.0
2009	2.4	52.9	13.9	44.8	114.0

**Table 1-11
Sheep and lambs on farms — Alberta**

	Rams	Ewes	Replacement lambs	Market lambs	Total
thousands of head					
At January 1					
2003	6.0	113.9	15.7	51.4	187.0
2004	5.6	102.6	15.7	51.1	175.0
2005	5.4	101.5	14.7	49.4	171.0
2006	5.2	96.1	12.5	37.2	151.0
2007	5.2	96.3	12.8	37.7	152.0
2008	4.2	80.1	10.2	30.5	125.0
2009	4.3	83.7	10.9	28.1	127.0
At July 1					
2003	6.7	119.0	27.8	101.5	255.0
2004	5.1	101.5	19.3	122.1	248.0
2005	5.3	103.5	19.0	111.2	239.0
2006	5.2	103.6	16.0	103.2	228.0
2007	4.8	92.0	15.8	92.4	205.0
2008	4.0	88.2	11.5	81.3	185.0
2009	4.0	84.6	12.0	76.4	177.0

**Table 1-12
Sheep and lambs on farms — British Columbia**

	Rams	Ewes	Replacement lambs	Market lambs	Total
thousands of head					
At January 1					
2003	2.6	37.0	9.0	8.0	56.6
2004	2.1	32.1	9.0	15.8	59.0
2005	2.1	32.8	8.9	18.2	62.0
2006	2.1	32.0	8.7	21.2	64.0
2007	2.1	29.9	8.5	13.5	54.0
2008	1.6	25.6	6.4	11.4	45.0
2009	1.7	27.5	7.2	12.6	49.0
At July 1					
2003	2.3	33.5	7.2	30.0	73.0
2004	2.1	32.0	7.8	33.1	75.0
2005	2.1	32.0	8.0	33.9	76.0
2006	2.1	28.4	7.1	24.9	62.5
2007	1.8	26.7	6.5	23.0	58.0
2008	1.9	27.7	6.8	23.6	60.0
2009	1.6	26.3	5.7	24.4	58.0

Table 1-13
Sheep and lambs on farms — Western provinces

	Rams	Ewes	Replacement lambs	Market lambs	Total
thousands of head					
At January 1					
2003	13.3	250.0	41.8	127.5	432.6
2004	12.3	237.9	44.3	146.5	441.0
2005	12.3	239.4	42.7	138.6	433.0
2006	11.7	213.6	39.4	120.3	385.0
2007	11.8	211.8	39.4	102.0	365.0
2008	10.1	188.3	33.2	88.4	320.0
2009	9.9	188.8	31.5	88.8	319.0
At July 1					
2003	14.6	257.8	57.8	224.8	555.0
2004	12.4	237.9	47.8	266.9	565.0
2005	12.1	237.5	47.0	238.4	535.0
2006	11.5	230.3	41.9	208.3	492.0
2007	11.0	207.1	37.8	197.1	453.0
2008	10.2	203.3	35.5	187.0	436.0
2009	9.4	198.3	37.1	175.2	420.0

**Table 2-1
Sheep and lambs, supply and demand — 2004**

	N.L.	P.E.I.	N.S.	N.B.	Que.	Ont.	East	Man.	Sask.	Alta.	B.C.	West	Canada
	thousands of head												
January to June 2004													
Beginning inventory	4.5	3.2	18.5	7.0	250.0	270.0	553.2	82.0	125.0	175.0	59.0	441.0	994.2
Lambs born	4.1	2.7	17.0	5.4	158.8	212.7	400.7	43.0	73.1	151.1	40.0	307.2	707.9
Interprovincial imports (net) ¹	0.0	0.0	0.0	0.0	0.0	71.0	42.0	0.0	0.0	0.0	16.4	0.0	0.0
International imports	0.0	0.0	0.0	0.0	0.0	0.1	0.1	0.0	0.0	0.0	0.0	0.0	0.1
Total supply	8.6	5.9	35.5	12.4	408.8	553.8	996.0	125.0	198.1	326.1	115.4	748.2	1,744.2
Deaths, sheep	0.2	0.1	0.2	0.1	3.1	1.0	4.7	2.3	0.9	2.6	1.6	7.4	12.1
Deaths, lambs	0.5	0.2	1.0	0.5	19.4	23.0	44.6	4.6	5.8	11.8	3.6	25.8	70.4
Condemnations	0.0	0.0	0.0	0.0	0.4	1.1	1.5	0.0	0.0	0.2	0.0	0.2	1.7
Deaths and condemnations	0.7	0.3	1.2	0.6	22.9	25.1	50.8	6.9	6.7	14.6	5.2	33.4	84.2
Interprovincial exports (net) ²	0.0	1.4	2.8	1.0	23.8	0.0	0.0	26.0	20.6	11.8	0.0	42.0	0.0
International exports	0.0	0.0	0.0	0.0	0.0	0.0	0.0	0.0	0.0	0.0	0.0	0.0	0.0
Federal Provincial Inspected Slaughter (FPIS) ³	0.0	0.0	4.7	0.4	59.3	145.8	210.2	4.9	0.4	47.0	5.3	57.6	267.8
International imports for slaughter ⁴	0.0	0.0	0.0	0.0	0.0	0.0	0.0	0.0	0.0	0.0	0.0	0.0	0.0
Provincially inspected slaughter ⁵	0.0	0.1	0.0	0.0	0.0	0.0	0.1	0.0	0.0	0.0	0.0	0.0	0.1
Commercial slaughter, not elsewhere specified ⁶	0.5	0.0	0.5	0.8	0.0	13.9	15.7	0.0	0.1	0.0	0.5	0.6	16.3
Consumed on farms ⁷	0.0	0.0	0.1	0.1	0.8	1.5	2.5	1.0	1.2	0.8	3.2	6.2	8.7
Farm sales to consumers ⁸	1.0	0.0	0.7	0.0	12.0	27.5	41.2	4.2	9.1	3.9	26.2	43.4	84.6
Total slaughter	1.5	0.1	6.0	1.3	72.1	188.7	269.7	10.1	10.8	51.7	35.2	107.8	377.5
Total disposition ⁹	2.2	1.8	10.0	2.9	118.8	213.8	320.5	43.0	38.1	78.1	40.4	183.2	503.7
Ending inventory	6.4	4.1	25.5	9.5	290.0	340.0	675.5	82.0	160.0	248.0	75.0	565.0	1,240.5
July to December 2004													
Beginning inventory	6.4	4.1	25.5	9.5	290.0	340.0	675.5	82.0	160.0	248.0	75.0	565.0	1,240.5
Lambs born	0.2	0.2	2.5	0.7	71.3	69.3	144.2	3.0	6.4	15.6	12.7	37.7	181.9
Interprovincial imports (net) ¹	0.0	0.0	0.0	0.0	0.0	37.7	0.0	6.0	0.0	0.0	21.2	0.0	0.0
International imports	0.0	0.0	0.0	0.0	0.0	0.0	0.0	0.0	0.0	0.0	0.0	0.0	0.0
Total supply	6.6	4.3	28.0	10.2	361.3	447.0	819.7	91.0	166.4	263.6	108.9	602.7	1,422.4
Deaths, sheep	0.1	0.0	0.2	0.1	5.2	4.8	10.4	1.8	5.8	7.4	4.2	19.2	29.6
Deaths, lambs	0.1	0.1	0.4	0.1	3.6	4.7	9.0	1.0	1.9	1.7	2.0	6.6	15.6
Condemnations	0.0	0.0	0.0	0.0	0.4	1.2	1.6	0.0	0.0	0.3	0.0	0.3	1.9
Deaths and condemnations	0.2	0.1	0.6	0.2	9.2	10.7	21.0	2.8	7.7	9.4	6.2	26.1	47.1
Interprovincial exports (net) ²	0.0	1.0	1.5	2.0	33.2	0.0	0.0	0.0	9.0	18.2	0.0	0.0	0.0
International exports	0.0	0.0	0.0	0.0	0.0	0.0	0.0	0.0	0.0	0.0	0.0	0.0	0.0
Federal Provincial Inspected Slaughter (FPIS) ³	0.0	0.0	6.6	0.0	61.2	151.0	218.8	8.3	0.7	58.4	7.6	75.0	293.8
International imports for slaughter ⁴	0.0	0.0	0.0	0.0	0.0	0.0	0.0	0.0	0.0	0.0	0.0	0.0	0.0
Provincially inspected slaughter ⁵	0.0	0.3	0.0	0.0	0.0	0.0	0.3	0.0	0.0	0.0	0.0	0.0	0.3
Commercial slaughter, not elsewhere specified ⁶	0.7	0.0	0.1	1.1	0.0	15.5	17.4	0.0	0.5	0.0	1.7	2.2	19.6
Consumed on farms ⁷	0.2	0.0	0.1	0.1	1.2	1.8	3.4	0.9	1.2	4.3	7.0	13.4	16.8
Farm sales to consumers ⁸	1.5	0.0	0.5	0.2	9.0	3.0	14.2	9.0	17.3	2.3	24.4	53.0	67.2
Total slaughter	2.4	0.3	7.3	1.4	71.4	171.3	254.1	18.2	19.7	65.0	40.7	143.6	397.7
Total disposition ⁹	2.6	1.4	9.4	3.6	113.8	182.0	275.1	21.0	36.4	92.6	46.9	169.7	444.8
Ending inventory	4.0	2.9	18.6	6.6	247.5	265.0	544.6	70.0	130.0	171.0	62.0	433.0	977.6

1. A residual. It is arrived at by taking the number of animals coming to farms within that province minus the number of animals leaving for farming operations outside that province.
2. A residual. It is arrived at by taking the number of animals leaving for farming operations outside that province minus the number of animals coming to farms within that province.
3. Slaughterings at federally and / or provincially inspected packing plants.
4. Imports of live animals from the United States slaughtered in Canada.
5. All provincially inspected slaughter not included in F.P.I.S.
6. Other provincial slaughter not included above and not usually inspected.
7. Killed and eaten on the farm.
8. Killed and sold at the farm gate.
9. The sum of all deaths, condemnations, exports and slaughter.

Note(s): Inventory at January 1 or July 1 refers to the number of animals on the farm or feedlot at January 1 or July 1. All other balance sheet items represent activity that occurred within the six month reporting period.

**Table 2-2
Sheep and lambs, supply and demand — 2005**

	N.L.	P.E.I.	N.S.	N.B.	Que.	Ont.	East	Man.	Sask.	Alta.	B.C.	West	Canada
	thousands of head												
January to June 2005													
Beginning inventory	4.0	2.9	18.6	6.6	247.5	265.0	544.6	70.0	130.0	171.0	62.0	433.0	977.6
Lambs born	3.4	2.7	17.1	4.8	165.2	203.3	396.5	42.4	66.3	146.3	40.1	295.1	691.6
Interprovincial imports (net) ¹	0.0	0.0	0.0	0.0	0.0	65.7	45.4	0.0	0.0	0.0	17.3	0.0	0.0
International imports	0.0	0.0	0.0	0.0	0.0	0.1	0.1	0.0	0.0	0.0	0.0	0.0	0.1
Total supply	7.4	5.6	35.7	11.4	412.7	534.1	986.6	112.4	196.3	317.3	119.4	728.1	1,714.7
Deaths, sheep	0.2	0.1	0.3	0.1	3.0	1.1	4.8	2.2	1.2	2.7	1.7	7.8	12.6
Deaths, lambs	0.4	0.2	1.0	0.4	18.0	23.3	43.3	4.3	6.5	12.0	3.6	26.4	69.7
Condemnations	0.0	0.0	0.0	0.0	0.4	1.2	1.6	0.0	0.0	0.2	0.0	0.2	1.8
Deaths and condemnations	0.6	0.3	1.3	0.5	21.4	25.6	49.7	6.5	7.7	14.9	5.3	34.4	84.1
Interprovincial exports (net) ²	0.0	1.2	1.3	1.7	16.1	0.0	0.0	17.0	35.6	10.1	0.0	45.4	0.0
International exports	0.0	0.0	0.0	0.0	0.0	0.0	0.0	0.0	0.0	0.0	0.0	0.0	0.0
Federal Provincial Inspected Slaughter (FPIS) ³	0.0	0.0	6.1	0.5	70.4	157.0	234.0	3.6	0.3	47.5	4.9	56.3	290.3
International imports for slaughter ⁴	0.0	0.0	0.0	0.0	0.0	0.0	0.0	0.0	0.0	0.0	0.0	0.0	0.0
Provincially inspected slaughter ⁵	0.0	0.1	0.0	0.0	0.0	0.0	0.1	0.0	0.0	0.0	0.0	0.0	0.1
Commercial slaughter, not elsewhere specified ⁶	0.3	0.0	0.3	0.8	0.0	15.0	16.4	0.0	0.3	0.0	0.4	0.7	17.1
Consumed on farms ⁷	0.0	0.0	0.1	0.0	0.8	1.5	2.4	1.0	1.2	0.8	3.2	6.2	8.6
Farm sales to consumers ⁸	0.8	0.0	0.6	0.1	2.0	25.0	28.5	6.3	9.2	5.0	29.6	50.1	78.6
Total slaughter	1.1	0.1	7.1	1.4	73.2	198.5	281.4	10.9	11.0	53.3	38.1	113.3	394.7
Total disposition ⁹	1.7	1.6	9.7	3.6	110.7	224.1	331.1	34.4	54.3	78.3	43.4	193.1	524.2
Ending inventory	5.7	4.0	26.0	7.8	302.0	310.0	655.5	78.0	142.0	239.0	76.0	535.0	1,190.5
July to December 2005													
Beginning inventory	5.7	4.0	26.0	7.8	302.0	310.0	655.5	78.0	142.0	239.0	76.0	535.0	1,190.5
Lambs born	0.2	0.3	2.0	1.0	71.7	64.0	139.2	3.0	4.3	14.0	12.0	33.3	172.5
Interprovincial imports (net) ¹	0.0	0.0	0.0	0.0	0.0	41.7	0.0	8.3	0.0	0.0	24.3	3.2	0.0
International imports	0.0	0.0	0.0	0.0	0.0	0.0	0.0	0.0	0.0	0.0	0.0	0.0	0.0
Total supply	5.9	4.3	28.0	8.8	373.7	415.7	794.7	89.3	146.3	253.0	112.3	571.5	1,366.2
Deaths, sheep	0.1	0.0	0.3	0.1	4.8	5.0	10.3	2.3	6.4	7.7	4.2	20.6	30.9
Deaths, lambs	0.1	0.1	0.2	0.1	3.5	5.0	9.0	1.7	2.7	2.6	1.8	8.8	17.8
Condemnations	0.0	0.0	0.0	0.0	0.4	1.2	1.6	0.0	0.0	0.2	0.0	0.2	1.8
Deaths and condemnations	0.2	0.1	0.5	0.2	8.7	11.2	20.9	4.0	9.1	10.5	6.0	29.6	50.5
Interprovincial exports (net) ²	0.0	0.6	1.2	1.4	41.7	0.0	3.2	0.0	8.6	20.8	0.0	0.0	0.0
International exports	0.0	0.0	0.0	0.0	0.0	0.7	0.7	0.0	0.1	0.1	0.0	0.2	0.9
Federal Provincial Inspected Slaughter (FPIS) ³	0.0	0.0	7.3	0.0	66.8	151.7	225.8	5.3	0.5	51.3	8.7	65.8	291.6
International imports for slaughter ⁴	0.0	0.0	0.0	0.0	0.0	0.0	0.0	0.0	0.0	0.0	0.0	0.0	0.0
Provincially inspected slaughter ⁵	0.0	0.2	0.0	0.0	0.0	0.0	0.2	0.0	0.0	0.0	0.0	0.0	0.2
Commercial slaughter, not elsewhere specified ⁶	0.6	0.0	0.1	0.7	0.0	15.3	16.7	0.0	0.6	0.0	1.9	2.5	19.2
Consumed on farms ⁷	0.2	0.0	0.1	0.1	1.2	1.8	3.4	0.9	1.2	4.3	7.0	13.4	16.8
Farm sales to consumers ⁸	1.3	0.0	0.3	0.1	3.3	10.0	15.0	14.1	21.2	15.0	24.7	75.0	90.0
Total slaughter	2.1	0.2	7.8	0.9	71.3	178.8	261.1	20.3	23.5	70.6	42.3	156.7	417.8
Total disposition ⁹	2.3	0.9	9.5	2.5	121.7	190.7	285.9	24.3	41.3	102.0	48.3	186.5	472.4
Ending inventory	3.6	3.4	18.5	6.3	252.0	225.0	508.8	65.0	105.0	151.0	64.0	385.0	893.8

1. A residual. It is arrived at by taking the number of animals coming to farms within that province minus the number of animals leaving for farming operations outside that province.

2. A residual. It is arrived at by taking the number of animals leaving for farming operations outside that province minus the number of animals coming to farms within that province.

3. Slaughtering at federally and / or provincially inspected packing plants.

4. Imports of live animals from the United States slaughtered in Canada.

5. All provincially inspected slaughter not included in F.P.I.S.

6. Other provincial slaughter not included above and not usually inspected.

7. Killed and eaten on the farm.

8. Killed and sold at the farm gate.

9. The sum of all deaths, condemnations, exports and slaughter.

Note(s): Inventory at January 1 or July 1 refers to the number of animals on the farm or feedlot at January 1 or July 1. All other balance sheet items represent activity that occurred within the six month reporting period.

**Table 2-3
Sheep and lambs, supply and demand — 2006**

	N.L.	P.E.I.	N.S.	N.B.	Que.	Ont.	East	Man.	Sask.	Alta.	B.C.	West	Canada
	thousands of head												
January to June 2006													
Beginning inventory	3.6	3.4	18.5	6.3	252.0	225.0	508.8	65.0	105.0	151.0	64.0	385.0	893.8
Lambs born	2.8	2.6	16.2	4.4	168.4	214.4	408.8	44.1	64.8	149.0	37.4	295.3	704.1
Interprovincial imports (net) ¹	0.0	0.0	0.0	0.0	0.0	68.9	43.3	0.0	0.0	0.0	7.7	0.0	0.0
International imports	0.0	0.0	0.0	0.0	0.0	0.0	0.0	0.0	0.0	3.1	2.8	5.9	5.9
Total supply	6.4	6.0	34.7	10.7	420.4	508.3	960.9	109.1	169.8	303.1	111.9	686.2	1,647.1
Deaths, sheep	0.2	0.1	0.4	0.1	2.9	0.8	4.5	2.1	0.8	2.5	1.9	7.3	11.8
Deaths, lambs	0.4	0.2	1.1	0.4	18.2	22.0	42.3	4.0	5.3	11.5	3.8	24.6	66.9
Condemnations	0.0	0.0	0.0	0.0	0.4	1.1	1.5	0.0	0.0	0.2	0.0	0.2	1.7
Deaths and condemnations	0.6	0.3	1.5	0.5	21.5	23.9	48.3	6.1	6.1	14.2	5.7	32.1	80.4
Interprovincial exports (net) ²	0.0	1.6	1.7	1.6	20.7	0.0	0.0	24.4	17.6	9.0	0.0	43.3	0.0
International exports	0.0	0.0	0.0	0.0	0.0	0.0	0.0	0.1	3.1	0.0	0.0	3.2	3.2
Federal Provincial Inspected Slaughter (FPIS) ³	0.0	0.0	5.3	0.5	69.4	142.1	217.3	2.9	0.3	44.2	4.7	52.1	269.4
International imports for slaughter ⁴	0.0	0.0	0.0	0.0	0.0	0.0	0.0	0.0	0.0	0.0	0.0	0.0	0.0
Provincially inspected slaughter ⁵	0.0	0.1	0.0	0.0	0.0	0.0	0.1	0.0	0.0	0.0	0.0	0.0	0.1
Commercial slaughter, not elsewhere specified ⁶	0.3	0.0	0.3	0.7	0.0	13.5	14.8	0.0	0.4	0.0	0.4	0.8	15.6
Consumed on farms ⁷	0.0	0.0	0.1	0.0	0.8	1.5	2.4	1.0	1.2	0.8	3.2	6.2	8.6
Farm sales to consumers ⁸	0.8	0.0	0.6	0.1	1.0	16.3	18.8	6.1	8.1	6.9	35.4	56.5	75.3
Total slaughter	1.1	0.1	6.3	1.3	71.2	173.4	253.4	10.0	10.0	51.9	43.7	115.6	369.0
Total disposition ⁹	1.7	2.0	9.5	3.4	113.4	197.3	301.7	40.6	36.8	75.1	49.4	194.2	495.9
Ending inventory	4.7	4.0	25.2	7.3	307.0	311.0	659.2	68.5	133.0	228.0	62.5	492.0	1,151.2
July to December 2006													
Beginning inventory	4.7	4.0	25.2	7.3	307.0	311.0	659.2	68.5	133.0	228.0	62.5	492.0	1,151.2
Lambs born	0.2	0.3	1.9	1.0	67.0	63.6	134.0	3.2	3.8	13.5	11.4	31.9	165.9
Interprovincial imports (net) ¹	0.0	0.0	0.0	0.0	0.0	36.0	0.0	10.4	0.0	0.0	30.5	9.9	0.0
International imports	0.0	0.0	0.0	0.0	0.0	0.0	0.0	0.0	0.0	9.1	0.9	10.0	10.0
Total supply	4.9	4.3	27.1	8.3	374.0	410.6	793.2	82.1	136.8	250.6	105.3	543.8	1,337.0
Deaths, sheep	0.1	0.0	0.3	0.1	5.0	4.8	10.3	1.7	5.8	8.0	4.2	19.7	30.0
Deaths, lambs	0.1	0.1	0.4	0.1	4.0	4.8	9.5	0.9	1.9	2.8	1.8	7.4	16.9
Condemnations	0.0	0.0	0.0	0.0	0.4	1.1	1.5	0.0	0.0	0.2	0.0	0.2	1.7
Deaths and condemnations	0.2	0.1	0.7	0.2	9.4	10.7	21.3	2.6	7.7	11.0	6.0	27.3	48.6
Interprovincial exports (net) ²	0.0	0.6	1.0	1.2	43.1	0.0	9.9	0.0	9.0	22.0	0.0	0.0	0.0
International exports	0.0	0.0	0.0	0.0	0.0	0.0	0.0	0.0	0.0	0.0	0.0	0.0	0.0
Federal Provincial Inspected Slaughter (FPIS) ³	0.0	0.0	6.2	0.0	69.1	144.5	219.8	5.1	0.4	45.5	8.1	59.1	278.9
International imports for slaughter ⁴	0.0	0.0	0.0	0.0	0.0	0.0	0.0	0.0	0.0	0.0	0.0	0.0	0.0
Provincially inspected slaughter ⁵	0.0	0.2	0.0	0.0	0.0	0.0	0.2	0.0	0.0	0.0	0.0	0.0	0.2
Commercial slaughter, not elsewhere specified ⁶	0.4	0.0	0.1	0.8	0.0	14.2	15.5	0.0	0.5	0.0	1.7	2.2	17.7
Consumed on farms ⁷	0.1	0.0	0.1	0.1	1.2	1.8	3.3	0.9	1.2	4.3	7.0	13.4	16.7
Farm sales to consumers ⁸	1.0	0.0	0.4	0.1	3.2	4.4	9.1	9.5	23.0	15.8	28.5	76.8	85.9
Total slaughter	1.5	0.2	6.8	1.0	73.5	164.9	247.9	15.5	25.1	65.6	45.3	151.5	399.4
Total disposition ⁹	1.7	0.9	8.5	2.4	126.0	175.6	279.1	18.1	41.8	98.6	51.3	178.8	457.9
Ending inventory	3.2	3.4	18.6	5.9	248.0	235.0	514.1	64.0	95.0	152.0	54.0	365.0	879.1

1. A residual. It is arrived at by taking the number of animals coming to farms within that province minus the number of animals leaving for farming operations outside that province.
2. A residual. It is arrived at by taking the number of animals leaving for farming operations outside that province minus the number of animals coming to farms within that province.
3. Slaughtering at federally and / or provincially inspected packing plants.
4. Imports of live animals from the United States slaughtered in Canada.
5. All provincially inspected slaughter not included in F.P.I.S.
6. Other provincial slaughter not included above and not usually inspected.
7. Killed and eaten on the farm.
8. Killed and sold at the farm gate.
9. The sum of all deaths, condemnations, exports and slaughter.

Note(s): Inventory at January 1 or July 1 refers to the number of animals on the farm or feedlot at January 1 or July 1. All other balance sheet items represent activity that occurred within the six month reporting period.

**Table 2-4
Sheep and lambs, supply and demand — 2007**

	N.L.	P.E.I.	N.S.	N.B.	Que.	Ont.	East	Man.	Sask.	Alta.	B.C.	West	Canada
	thousands of head												
January to June 2007													
Beginning inventory	3.2	3.4	18.6	5.9	248.0	235.0	514.1	64.0	95.0	152.0	54.0	365.0	879.1
Lambs born	2.7	2.3	16.9	4.5	155.2	194.8	376.4	42.3	60.6	131.3	35.8	270.0	646.4
Interprovincial imports (net) ¹	0.0	0.0	0.0	0.0	0.0	69.1	51.1	0.0	0.0	0.0	12.0	0.0	0.0
International imports	0.0	0.0	0.0	0.0	0.0	0.1	0.1	0.0	0.0	6.9	1.0	7.9	8.0
Total supply	5.9	5.7	35.5	10.4	403.2	499.0	941.7	106.3	155.6	290.2	102.8	642.9	1,584.6
Deaths, sheep	0.2	0.1	0.3	0.1	3.0	1.1	4.8	2.0	1.0	2.7	2.0	7.7	12.5
Deaths, lambs	0.3	0.2	1.1	0.3	19.0	23.6	44.5	3.6	5.5	12.2	4.0	25.3	69.8
Condemnations	0.0	0.0	0.0	0.0	0.4	1.0	1.4	0.0	0.0	0.2	0.0	0.2	1.6
Deaths and condemnations	0.5	0.3	1.4	0.4	22.4	25.7	50.7	5.6	6.5	15.1	6.0	33.2	83.9
Interprovincial exports (net) ²	0.0	1.7	1.1	0.7	14.5	0.0	0.0	21.3	21.1	20.7	0.0	51.1	0.0
International exports	0.0	0.0	0.0	0.0	0.0	0.0	0.0	0.0	0.0	0.0	0.0	0.0	0.0
Federal Provincial Inspected Slaughter (FPIS) ³	0.0	0.0	5.4	0.4	68.3	131.7	205.8	2.2	0.2	42.0	4.9	49.3	255.1
International imports for slaughter ⁴	0.0	0.0	0.0	0.0	0.0	0.0	0.0	0.0	0.0	0.0	0.0	0.0	0.0
Provincially inspected slaughter ⁵	0.0	0.1	0.0	0.0	0.0	0.0	0.1	0.0	0.0	0.0	0.0	0.0	0.1
Commercial slaughter, not elsewhere specified ⁶	0.4	0.0	0.3	0.7	0.0	12.2	13.6	0.0	0.4	0.0	0.5	0.9	14.5
Consumed on farms ⁷	0.0	0.0	0.1	0.0	1.0	1.5	2.6	1.0	1.2	0.8	3.2	6.2	8.8
Farm sales to consumers ⁸	0.8	0.0	0.4	0.1	2.0	22.9	26.2	6.2	6.2	6.6	30.2	49.2	75.4
Total slaughter	1.2	0.1	6.2	1.2	71.3	168.3	248.3	9.4	8.0	49.4	38.8	105.6	353.9
Total disposition ⁹	1.7	2.1	8.7	2.3	108.2	194.0	299.0	36.3	35.6	85.2	44.8	189.9	488.9
Ending inventory	4.2	3.6	26.8	8.1	295.0	305.0	642.7	70.0	120.0	205.0	58.0	453.0	1,095.7
July to December 2007													
Beginning inventory	4.2	3.6	26.8	8.1	295.0	305.0	642.7	70.0	120.0	205.0	58.0	453.0	1,095.7
Lambs born	0.3	0.3	1.8	1.0	63.0	58.9	125.3	3.1	3.9	13.0	10.9	30.9	156.2
Interprovincial imports (net) ¹	0.0	0.0	0.0	0.0	0.0	38.5	0.0	7.5	0.0	0.0	22.9	0.1	0.0
International imports	0.0	0.0	0.0	0.0	0.0	2.2	2.2	0.0	0.0	13.8	2.2	16.0	18.2
Total supply	4.5	3.9	28.6	9.1	358.0	404.6	770.2	80.6	123.9	231.8	94.0	500.0	1,270.2
Deaths, sheep	0.0	0.0	0.4	0.1	5.0	5.0	10.5	1.7	5.2	7.5	4.0	18.4	28.9
Deaths, lambs	0.1	0.1	0.6	0.1	4.0	5.2	10.1	0.9	1.5	1.9	1.6	5.9	16.0
Condemnations	0.0	0.0	0.0	0.0	0.4	1.1	1.5	0.0	0.0	0.3	0.0	0.3	1.8
Deaths and condemnations	0.1	0.1	1.0	0.2	9.4	11.3	22.1	2.6	6.7	9.7	5.6	24.6	46.7
Interprovincial exports (net) ²	0.0	0.5	2.7	1.3	34.1	0.0	0.1	0.0	5.8	24.5	0.0	0.0	0.0
International exports	0.0	0.0	0.0	0.0	0.0	0.1	0.1	0.0	0.0	0.0	0.0	0.0	0.1
Federal Provincial Inspected Slaughter (FPIS) ³	0.0	0.0	6.5	0.0	63.7	137.3	207.5	4.6	0.4	56.2	10.3	71.5	279.0
International imports for slaughter ⁴	0.0	0.0	0.0	0.0	0.0	0.0	0.0	0.0	0.0	0.0	0.0	0.0	0.0
Provincially inspected slaughter ⁵	0.0	0.2	0.0	0.0	0.0	0.0	0.2	0.0	0.0	0.0	0.0	0.0	0.2
Commercial slaughter, not elsewhere specified ⁶	0.3	0.0	0.2	0.8	0.0	13.1	14.4	0.0	0.8	0.0	0.9	1.7	16.1
Consumed on farms ⁷	0.1	0.0	0.2	0.1	1.3	1.8	3.5	0.9	1.2	4.3	7.0	13.4	16.9
Farm sales to consumers ⁸	0.9	0.0	0.5	0.1	4.5	11.0	17.0	10.5	21.0	12.1	25.2	68.8	85.8
Total slaughter	1.3	0.2	7.4	1.0	69.5	163.2	242.6	16.0	23.4	72.6	43.4	155.4	398.0
Total disposition ⁹	1.4	0.8	11.1	2.5	113.0	174.6	264.9	18.6	35.9	106.8	49.0	180.0	444.9
Ending inventory	3.1	3.1	17.5	6.6	245.0	230.0	505.3	62.0	88.0	125.0	45.0	320.0	825.3

1. A residual. It is arrived at by taking the number of animals coming to farms within that province minus the number of animals leaving for farming operations outside that province.

2. A residual. It is arrived at by taking the number of animals leaving for farming operations outside that province minus the number of animals coming to farms within that province.

3. Slaughtering at federally and / or provincially inspected packing plants.

4. Imports of live animals from the United States slaughtered in Canada.

5. All provincially inspected slaughter not included in F.P.I.S.

6. Other provincial slaughter not included above and not usually inspected.

7. Killed and eaten on the farm.

8. Killed and sold at the farm gate.

9. The sum of all deaths, condemnations, exports and slaughter.

Note(s): Inventory at January 1 or July 1 refers to the number of animals on the farm or feedlot at January 1 or July 1. All other balance sheet items represent activity that occurred within the six month reporting period.

**Table 2-5
Sheep and lambs, supply and demand — 2008**

	N.L.	P.E.I.	N.S.	N.B.	Que.	Ont.	East	Man.	Sask.	Alta.	B.C.	West	Canada
	thousands of head												
January to June 2008													
Beginning inventory	3.1	3.1	17.5	6.6	245.0	230.0	505.3	62.0	88.0	125.0	45.0	320.0	825.3
Lambs born	2.5	2.5	15.7	4.8	157.2	190.3	373.0	42.2	65.4	119.2	35.3	262.1	635.1
Interprovincial imports (net) ¹	0.0	0.0	0.0	0.0	0.0	63.6	34.5	0.0	0.0	0.0	16.9	0.0	0.0
International imports	0.0	0.0	0.0	0.0	0.0	2.6	2.6	0.0	0.0	14.6	2.4	17.0	19.6
Total supply	5.6	5.6	33.2	11.4	402.2	486.5	915.4	104.2	153.4	258.8	99.6	599.1	1,514.5
Deaths, sheep	0.2	0.1	0.3	0.1	3.0	0.9	4.6	2.0	0.8	2.0	1.7	6.5	11.1
Deaths, lambs	0.2	0.2	1.0	0.3	18.8	21.8	42.3	3.6	5.3	11.0	3.2	23.1	65.4
Condemnations	0.0	0.0	0.0	0.0	0.4	1.0	1.4	0.0	0.0	0.2	0.0	0.2	1.6
Deaths and condemnations	0.4	0.3	1.3	0.4	22.2	23.7	48.3	5.6	6.1	13.2	4.9	29.8	78.1
Interprovincial exports (net) ²	0.0	1.6	1.5	1.1	24.9	0.0	0.0	23.3	14.2	13.9	0.0	34.5	0.0
International exports	0.0	0.0	0.0	0.0	0.0	0.0	0.0	0.0	0.0	0.0	0.0	0.0	0.0
Federal Provincial Inspected Slaughter (FPIS) ³	0.0	0.0	5.3	0.4	63.3	130.5	199.5	2.1	0.2	42.5	6.2	51.0	250.5
International imports for slaughter ⁴	0.0	0.0	0.0	0.0	0.0	0.0	0.0	0.0	0.0	0.0	0.0	0.0	0.0
Provincially inspected slaughter ⁵	0.0	0.2	0.0	0.0	0.0	0.0	0.2	0.0	0.0	0.0	0.0	0.0	0.2
Commercial slaughter, not elsewhere specified ⁶	0.3	0.0	0.2	0.7	0.0	11.3	12.5	0.0	0.5	0.0	0.0	0.5	13.0
Consumed on farms ⁷	0.0	0.0	0.1	0.0	0.6	1.5	2.2	1.0	1.2	0.6	2.5	5.3	7.5
Farm sales to consumers ⁸	0.7	0.0	0.2	0.1	1.2	24.5	26.7	6.2	6.2	3.6	26.0	42.0	68.7
Total slaughter	1.0	0.2	5.8	1.2	65.1	167.8	241.1	9.3	8.1	46.7	34.7	98.8	339.9
Total disposition ⁹	1.4	2.1	8.6	2.7	112.2	191.5	289.4	38.2	28.4	73.8	39.6	163.1	452.5
Ending inventory	4.2	3.5	24.6	8.7	290.0	295.0	626.0	66.0	125.0	185.0	60.0	436.0	1,062.0
July to December 2008													
Beginning inventory	4.2	3.5	24.6	8.7	290.0	295.0	626.0	66.0	125.0	185.0	60.0	436.0	1,062.0
Lambs born	0.3	0.5	2.7	0.5	73.5	54.3	131.8	2.8	2.9	18.7	15.9	40.3	172.1
Interprovincial imports (net) ¹	0.0	0.0	0.0	0.0	0.0	46.0	0.0	7.3	0.0	0.0	22.0	4.0	0.0
International imports	0.0	0.0	0.0	0.0	0.0	3.4	3.4	0.0	0.0	14.3	1.9	16.2	19.6
Total supply	4.5	4.0	27.3	9.2	363.5	398.7	761.2	76.1	127.9	218.0	99.8	496.5	1,257.7
Deaths, sheep	0.0	0.0	0.3	0.1	5.0	5.2	10.6	1.3	5.6	6.9	4.0	17.8	28.4
Deaths, lambs	0.1	0.1	0.5	0.1	3.9	5.4	10.1	0.7	2.0	1.5	1.6	5.8	15.9
Condemnations	0.0	0.0	0.0	0.0	0.4	1.1	1.5	0.0	0.0	0.3	0.1	0.4	1.9
Deaths and condemnations	0.1	0.1	0.8	0.2	9.3	11.7	22.2	2.0	7.6	8.7	5.7	24.0	46.2
Interprovincial exports (net) ²	0.0	0.2	1.0	2.0	46.8	0.0	4.0	0.0	12.8	12.5	0.0	0.0	0.0
International exports	0.0	0.0	0.0	0.0	0.0	0.0	0.0	0.0	0.0	0.0	0.0	0.0	0.0
Federal Provincial Inspected Slaughter (FPIS) ³	0.0	0.0	7.2	0.0	57.6	145.7	210.5	4.5	0.4	55.7	12.6	73.2	283.7
International imports for slaughter ⁴	0.0	0.0	0.0	0.0	0.0	0.0	0.0	0.0	0.0	0.0	0.0	0.0	0.0
Provincially inspected slaughter ⁵	0.0	0.3	0.0	0.0	0.0	0.0	0.3	0.0	0.0	0.0	0.0	0.0	0.3
Commercial slaughter, not elsewhere specified ⁶	0.3	0.0	0.2	1.2	0.0	13.5	15.2	0.0	0.9	0.0	0.3	1.2	16.4
Consumed on farms ⁷	0.1	0.0	0.1	0.1	1.3	1.8	3.4	0.6	1.2	4.0	7.0	12.8	16.2
Farm sales to consumers ⁸	0.7	0.0	0.2	0.0	4.5	11.0	16.4	8.0	23.0	10.1	25.2	66.3	82.7
Total slaughter	1.1	0.3	7.7	1.3	63.4	172.0	245.8	13.1	25.5	69.8	45.1	153.5	399.3
Total disposition ⁹	1.2	0.6	9.5	3.5	119.5	183.7	272.0	15.1	45.9	91.0	50.8	177.5	449.5
Ending inventory	3.3	3.4	17.8	5.7	244.0	215.0	489.2	61.0	82.0	127.0	49.0	319.0	808.2

1. A residual. It is arrived at by taking the number of animals coming to farms within that province minus the number of animals leaving for farming operations outside that province.
2. A residual. It is arrived at by taking the number of animals leaving for farming operations outside that province minus the number of animals coming to farms within that province.
3. Slaughtering at federally and / or provincially inspected packing plants.
4. Imports of live animals from the United States slaughtered in Canada.
5. All provincially inspected slaughter not included in F.P.I.S.
6. Other provincial slaughter not included above and not usually inspected.
7. Killed and eaten on the farm.
8. Killed and sold at the farm gate.
9. The sum of all deaths, condemnations, exports and slaughter.

Note(s): Inventory at January 1 or July 1 refers to the number of animals on the farm or feedlot at January 1 or July 1. All other balance sheet items represent activity that occurred within the six month reporting period.

Table 2-6
Sheep and lambs, supply and demand — 2009

	N.L.	P.E.I.	N.S.	N.B.	Que.	Ont.	East	Man.	Sask.	Alta.	B.C.	West	Canada
	thousands of head												
January to June 2009													
Beginning inventory	3.3	3.4	17.8	5.7	244.0	215.0	489.2	61.0	82.0	127.0	49.0	319.0	808.2
Lambs born	2.3	2.6	17.3	4.7	163.3	206.9	397.1	46.1	63.4	116.7	34.9	261.1	658.2
Interprovincial imports (net) ¹	0.0	0.0	0.0	0.0	0.0	74.8	47.5	0.0	0.0	0.0	12.5	0.0	0.0
International imports	0.0	0.0	0.0	0.0	0.0	5.8	5.8	0.0	1.5	10.2	2.1	13.8	19.6
Total supply	5.6	6.0	35.1	10.4	407.3	502.5	939.6	107.1	146.9	253.9	98.5	593.9	1,533.5
Deaths, sheep	0.2	0.1	0.3	0.1	3.0	0.9	4.6	2.0	0.9	2.0	1.7	6.6	11.2
Deaths, lambs	0.2	0.2	1.2	0.3	17.2	24.0	43.1	3.6	6.1	10.0	3.2	22.9	66.0
Condemnations	0.0	0.0	0.0	0.0	0.5	1.0	1.5	0.0	0.0	0.2	0.0	0.2	1.7
Deaths and condemnations	0.4	0.3	1.5	0.4	20.7	25.9	49.2	5.6	7.0	12.2	4.9	29.7	78.9
Interprovincial exports (net) ²	0.0	1.4	1.5	0.8	23.6	0.0	0.0	20.5	17.8	21.7	0.0	47.5	0.0
International exports	0.0	0.0	0.0	0.0	0.0	0.0	0.0	0.0	0.0	0.0	0.0	0.0	0.0
Federal Provincial Inspected Slaughter (FPIS) ³	0.0	0.0	5.4	0.4	76.1	125.2	207.1	2.9	0.2	36.4	6.4	45.9	253.0
International imports for slaughter ⁴	0.0	0.0	0.0	0.0	0.0	0.0	0.0	0.0	0.0	0.0	0.0	0.0	0.0
Provincially inspected slaughter ⁵	0.0	0.2	0.0	0.0	0.0	0.0	0.2	0.0	0.0	0.0	0.0	0.0	0.2
Commercial slaughter, not elsewhere specified ⁶	0.4	0.0	0.2	0.6	0.0	10.8	12.0	0.0	0.5	0.0	0.0	0.5	12.5
Consumed on farms ⁷	0.0	0.0	0.1	0.0	0.6	1.5	2.2	1.0	1.2	0.8	2.6	5.6	7.8
Farm sales to consumers ⁸	0.8	0.0	0.2	0.1	1.3	24.1	26.5	6.1	6.2	5.8	26.6	44.7	71.2
Total slaughter	1.2	0.2	5.9	1.1	78.0	161.6	248.0	10.0	8.1	43.0	35.6	96.7	344.7
Total disposition ⁹	1.6	1.9	8.9	2.3	122.3	187.5	297.2	36.1	32.9	76.9	40.5	173.9	471.1
Ending inventory	4.0	4.1	26.2	8.1	285.0	315.0	642.4	71.0	114.0	177.0	58.0	420.0	1,062.4

1. A residual. It is arrived at by taking the number of animals coming to farms within that province minus the number of animals leaving for farming operations outside that province.
2. A residual. It is arrived at by taking the number of animals leaving for farming operations outside that province minus the number of animals coming to farms within that province.
3. Slaughterings at federally and / or provincially inspected packing plants.
4. Imports of live animals from the United States slaughtered in Canada.
5. All provincially inspected slaughter not included in F.P.I.S.
6. Other provincial slaughter not included above and not usually inspected.
7. Killed and eaten on the farm.
8. Killed and sold at the farm gate.
9. The sum of all deaths, condemnations, exports and slaughter.

Note(s): Inventory at January 1 or July 1 refers to the number of animals on the farm or feedlot at January 1 or July 1. All other balance sheet items represent activity that occurred within the six month reporting period.

Table 3
Sheep and lamb production, Canada

	Farm production				Meat production			Edible offal
	Total slaughter	Exported alive	Imported alive	Farm production	Total slaughter	Average cold dressed weight ¹	Total cold dressed weight ¹	
	thousands of head				kg		tonnes	
1982	415.1	6.5	35.0	386.6	415.1	18.7	7,770	320
1983	454.2	5.5	54.5	405.2	454.2	18.6	8,460	350
1984	467.5	15.1	53.3	429.3	467.5	19.1	8,900	361
1985	418.7	19.2	38.4	399.5	418.7	19.6	8,210	323
1986	407.4	22.5	36.9	393.0	407.4	20.1	8,180	314
1987	399.1	24.8	34.2	389.7	399.1	19.8	7,910	308
1988	423.3	27.4	41.7	409.0	423.3	19.9	8,430	327
1989	454.6	26.2	34.3	446.5	454.6	19.6	8,930	351
1990	475.2	25.7	35.7	465.2	475.2	19.6	9,290	367
1991	524.4	22.6	28.1	518.9	524.4	19.9	10,420	404
1992	563.9	27.5	13.9	577.5	563.9	20.0	11,260	435
1993	525.3	27.6	12.5	540.4	525.3	20.6	10,840	405
1994	515.2	28.5	19.6	524.1	515.2	20.4	10,490	397
1995	500.0	39.0	25.1	513.9	500.0	20.5	10,230	386
1996	521.6	44.6	27.2	539.0	521.6	20.4	10,620	402
1997	483.9	46.2	10.4	519.7	483.9	21.1	10,180	373
1998	498.0	46.1	14.7	529.4	498.0	21.3	10,610	384
1999	550.7	52.0	9.3	593.4	550.7	20.7	11,420	425
2000	611.8	51.7	2.8	660.7	611.8	20.5	12,540	472
2001	674.1	85.4	1.1	758.4	674.1	21.1	14,250	520
2002	695.0	139.3	1.1	833.2	695.0	21.2	14,750	536
2003	729.9	68.8	0.4	798.3	729.9	21.6	15,760	563
2004	775.2	0.0	0.1	775.1	775.2	22.5	17,470	598
2005	812.5	0.9	0.1	813.3	812.5	21.6	17,550	626
2006	768.4	3.2	15.9	755.7	768.4	22.2	17,040	592
2007	751.9	0.1	26.2	725.8	751.9	22.3	16,780	580
2008	723.6	0.0	39.2	684.4	723.6	21.9	15,820	558

1. Not including edible offal.

Table 4
Prices, lambs, weighted average, Toronto

	January	February	March	April	May	June	July	August	September	October	November	December	Annual
	dollars per hundredweight												
1982	76.74	79.47	80.86	82.87	87.28	85.42	84.97	72.19	70.25	69.26	69.52	70.04	74.34
1983	75.07	87.76	92.42	72.04	101.49	81.09	73.89	67.95	69.23	75.73	76.99	77.01	77.28
1984	86.79	87.42	95.61	101.49	102.57	88.15	81.57	79.28	80.47	79.52	87.60	86.33	86.18
1985	105.83	97.30	109.61	118.18	110.55	95.94	88.49	86.45	91.47	90.33	97.67	98.95	96.75
1986	97.03	114.14	115.78	123.92	135.04	116.57	102.65	109.97	96.33	105.41	104.07	111.63	106.73
1987	129.42	130.20	126.67	152.30	140.99	117.96	111.16	105.46	99.38	104.46	109.11	109.00	112.70
1988	129.89	137.13	121.80	132.68	125.84	105.58	103.20	97.22	88.40	95.32	94.84	97.36	104.71
1989	98.80	105.94	122.41	124.27	124.53	111.51	116.53	92.15	92.67	83.68	101.91	81.36	98.63
1990	96.01	96.35	108.73	103.25	98.60	95.40	85.78	82.49	79.20	76.29	76.28	77.91	87.98
1991	83.55	83.07	85.37	86.68	88.65	89.95	87.53	75.20	69.91	67.06	76.81	68.30	78.60
1992	81.98	86.19	91.78	98.92	100.68	92.84	86.88	83.82	83.90	80.06	89.22	100.12	88.81
1993	115.52	127.12	121.75	128.75	123.85	112.91	102.28	92.45	102.89	101.27	113.99	120.50	110.67
1994	119.78	114.21	121.46	110.59	123.53	124.54	115.81	108.56	110.04	114.30	122.80	114.46	116.43
1995	126.37	130.81	144.95	149.50	158.48	122.39	117.27	122.42	118.95	123.52	127.93	129.62	127.17
1996	141.06	141.46	154.16	165.41	147.65	136.35	135.13	132.95	126.11	122.68	135.39	133.21	135.11
1997	152.61	161.13	173.10	181.97	175.35	149.54	141.56	124.99	130.13	130.51	134.73	131.95	140.06
1998	154.29	159.53	165.49	170.53	149.66	128.73	121.65	119.25	108.19	112.96	119.33	121.90	132.10
1999	142.31	138.14	165.09	161.50	139.98	126.84	107.29	112.21	107.82	116.89	120.13	122.15	124.13
2000	136.34	140.87	148.90	148.16	161.52	131.42	123.05	120.95	120.24	120.68	138.05	139.65	132.83
2001	145.17	159.07	171.00	179.06	167.33	121.87	117.15	102.02	110.01	106.69	109.24	104.98	123.00
2002	130.74	142.50	138.04	124.68	119.43	97.90	107.38	102.74	108.32	111.98	123.22	123.76	116.09
2003	152.28	153.76	150.73	163.46	166.74	140.60	119.96	100.09	91.21	100.21	102.45	93.49	120.31
2004	117.18	103.25	82.30	133.31	129.84	119.19	109.91	104.85	98.27	94.70	104.24	120.20	106.44
2005	144.08	142.21	144.32	147.44	153.79	145.10	143.60	140.66	151.92	152.16	151.97	160.06	148.51
2006	179.55	174.05	168.45	179.14	177.09	160.95	147.60	146.58	156.43	146.64	157.95	165.67	160.78
2007	155.02	165.03	164.45	179.75	183.27	154.92	153.89	150.23	152.90	146.58	147.64	154.47	156.30
2008	150.86	162.97	159.55	161.90	182.61	175.06	155.07	149.73	154.03	148.97	147.41	158.07	158.06
2009	170.65	167.62	174.79	197.02	195.30	167.50

Note(s): From 1976 to 1990, the price is based on a lamb weighing 80 pounds or more. Beginning in 1991, it is based on a lamb weighing 80 to 94 pounds. The price is the Toronto price prior to 1994. Beginning in 1994, it includes 14 markets and the Ontario Public Stockyards.

Table 5
Shorn wool production, disposition and farm value

	Quantity purchased	Quantity used on farms	Average price paid to producer	Total farm value
	thousands of kg		\$/kg	thousands of \$
2003				
Newfoundland and Labrador	7.2	0.9	1.21	10
Prince Edward Island	4.4	0.5	1.91	9
Nova Scotia	34.5	1.2	1.39	50
New Brunswick	14.1	0.9	1.29	19
Quebec	258.2	6.2	0.63	166
Ontario	477.1	15.6	0.72	355
Manitoba	113.6	3.3	1.07	125
Saskatchewan	193.6	4.2	1.21	239
Alberta	401.1	9.0	1.37	562
British Columbia	35.5	14.7	1.14	57
Canada	1,539.3	56.5	1.00	1,592
2004				
Newfoundland and Labrador	7.2	0.9	1.23	10
Prince Edward Island	4.4	0.5	1.91	9
Nova Scotia	34.7	1.2	1.50	54
New Brunswick	14.0	0.9	1.37	20
Quebec	326.7	6.2	0.87	290
Ontario	439.7	15.6	0.96	437
Manitoba	111.9	3.3	1.20	138
Saskatchewan	213.8	4.2	1.38	301
Alberta	385.4	9.0	1.40	552
British Columbia	49.3	14.7	1.31	84
Canada	1,587.1	56.5	1.15	1,895
2005				
Newfoundland and Labrador	10.5	0.9	0.99	11
Prince Edward Island	4.4	0.5	1.38	7
Nova Scotia	25.1	1.2	1.27	33
New Brunswick	14.1	0.9	0.97	15
Quebec	329.1	6.2	0.62	208
Ontario	450.1	15.6	0.79	368
Manitoba	75.3	3.3	0.84	66
Saskatchewan	112.5	4.2	1.09	127
Alberta	350.2	9.0	0.96	345
British Columbia	34.2	14.7	0.98	48
Canada	1,405.5	56.5	0.84	1,228
2006				
Newfoundland and Labrador	3.4	0.9	1.22	5
Prince Edward Island	4.4	0.5	1.38	7
Nova Scotia	26.8	1.2	1.12	31
New Brunswick	14.1	0.9	0.97	14
Quebec	327.3	6.2	0.45	150
Ontario	393.9	15.6	0.56	229
Manitoba	69.9	3.3	0.65	48
Saskatchewan	105.2	4.2	0.78	85
Alberta	288.7	9.0	0.91	271
British Columbia	21.5	14.7	0.68	25
Canada	1,255.2	56.5	0.66	865
2007				
Newfoundland and Labrador	2.0	0.8	1.43	4
Prince Edward Island	3.9	0.4	1.43	6
Nova Scotia	24.8	1.2	1.21	31
New Brunswick	1.5	0.8	1.43	3
Quebec	266.1	5.7	0.40	109
Ontario	450.9	14.8	0.61	284
Manitoba	67.0	3.0	0.67	47
Saskatchewan	127.9	3.7	1.05	138
Alberta	303.0	8.2	0.98	305
British Columbia	21.4	14.3	0.78	28
Canada	1,268.5	52.9	0.72	955

Table 6-1
Sheep and lambs: number by class total for United States and Canada, July 1

	2004	2005	2006	2007	2008	2009	2009 as percentage of 2008
	thousands of head						percent
All sheep and lambs	8,840	8,970	8,881	8,626	8,332	8,112	97
Breeding sheep and lambs	5,264	5,385	5,333	5,195	5,065	4,945	97
Replacement lambs, under 1 year	735	790	763	731	724	723	100
Ewes, 1 year or older	4,322	4,383	4,360	4,258	4,137	4,019	97
Rams, 1 year or older	208	212	211	206	204	203	100
Sheep for marketing ¹	75	85	80	70	75	80	107
Lambs for marketing ²	3,501	3,501	3,468	3,360	3,192	3,087	97
Lamb crop ³	4,930	4,879	4,820	4,698	4,517

1. United States Sheep for Marketing only.
2. Canada lamb for marketing includes small amounts of market sheep.
3. January to December lamb crop.

Note(s): Totals may not add due to rounding.

Source(s): United States National Agricultural Statistics Service and Livestock and Food Section, Statistics Canada.

Table 6-2
Sheep and lambs: number by class — United States, July 1

	2004	2005	2006	2007	2008	2009	2009 as percentage of 2008
	thousands of head						percent
All sheep and lambs	7,600	7,780	7,730	7,530	7,270	7,050	97
Breeding sheep and lambs	4,515	4,650	4,620	4,515	4,400	4,280	97
Replacement lambs, under 1 year	620	685	665	635	630	630	100
Ewes, 1 year or older	3,715	3,780	3,770	3,700	3,590	3,470	97
Rams, 1 year or older	180	185	185	180	180	180	100
Sheep for marketing	75	85	80	70	75	80	107
Lambs for marketing	3,010	3,045	3,030	2,945	2,795	2,690	96
Lamb crop ¹	4,040	4,015	3,950	3,895	3,710	3,700 ²	100

1. January to December lamb crop.
2. For current year, January to December preliminary only.

Note(s): Totals may not add due to rounding.

Source(s): United States National Agricultural Statistics Service

Table 6-3
Sheep and lambs: number by class — Canada, July 1

	2004	2005	2006	2007	2008	2009	2009 as percentage of 2008
	thousands of head						percent
Sheep and lambs, total	1,240	1,190	1,151	1,096	1,062	1,062	100
Breeding sheep and lambs	749	735	713	680	665	665	100
Replacement lambs, under 1 year	115	105	98	96	94	93	99
Ewes, 1 year or older	607	603	590	558	547	549	100
Rams, 1 year or older	28	27	26	26	24	23	96
Sheep and Lambs for marketing	491	456	438	416	397	397	100
Lamb crop ¹	890	864	870	803	807	658 ²	82

1. January to December lamb crop.

2. For current year, January to June lamb crop only.

Note(s): Totals may not add due to rounding.

Source(s): Livestock and Food Section, Statistics Canada.

Table 7-1
Supply and disposition of red meat, Canada — Veal

	Beginning stocks	Production	Imports	Total supply	Exports	Ending stocks	Net supply	Available per person			Adjusted for loss ¹
								Retail	Carcass	Boneless	
	thousands of tonnes							weight per year in kilogram			
1994	0.65	37.60	5.25	43.50	3.82	1.28	38.40	1.10	1.32	0.91	0.55
1995	1.28	40.30	3.58	45.16	4.11	0.63	40.42	1.14	1.38	0.94	0.57
1996	0.63	40.39	2.52	43.54	4.25	0.68	38.61	1.08	1.30	0.89	0.54
1997	0.68	42.14	3.07	45.89	4.21	0.63	41.05	1.14	1.37	0.94	0.57
1998	0.63	41.43	2.69	44.75	4.48	0.68	39.60	1.09	1.31	0.90	0.54
1999	0.68	41.11	3.16	44.95	5.14	0.59	39.23	1.07	1.29	0.88	0.53
2000	0.59	40.81	3.55	44.95	3.81	0.63	40.51	1.10	1.32	0.90	0.55
2001	0.63	40.60	2.44	43.67	3.89	1.04	38.74	1.04	1.25	0.86	0.52
2002	1.04	38.09	4.17	43.30	2.42	1.37	39.51	1.05	1.26	0.86	0.52
2003	1.37	41.46	2.72	45.55	3.54	3.13	38.88	1.02	1.23	0.84	0.51
2004	3.13	43.46	1.08	47.67	9.04	1.69	36.94	0.96	1.16	0.79	0.48
2005	1.69	40.08	2.41	44.18	8.59	1.71	33.87	0.87	1.05	0.72	0.43
2006	1.71	36.97	4.33	43.02	7.14	1.94	33.93	0.86	1.04	0.71	0.43
2007	1.94	38.53	3.08	43.55	6.26	1.88	35.40	0.89	1.08	0.74	0.45
2008	1.88	36.96	2.54	41.38	5.70	2.76	32.93	0.82	0.99	0.68	0.41

1. Available data adjusted on boneless basis for retail, household, cooking and plate loss.

Table 7-2
Supply and disposition of red meat, Canada — Beef

	Beginning stocks	Production	Imports	Total supply	Exports	Ending stocks	Net supply	Available per person			Adjusted for loss ¹
								Retail	Carcass	Boneless	
thousands of tonnes							weight per year in kilogram				
1994	23.31	861.86	280.71	1,165.88	216.59	30.09	919.20	23.14	31.70	20.95	13.25
1995	30.09	887.91	252.20	1,170.20	215.48	24.02	930.70	23.19	31.76	21.12	13.36
1996	24.02	976.11	234.82	1,234.95	282.08	21.55	931.32	22.96	31.45	21.04	13.31
1997	21.55	1,047.34	250.06	1,318.95	356.16	22.07	940.72	22.96	31.46	21.04	13.31
1998	22.07	1,140.49	236.72	1,399.28	410.80	25.37	963.10	23.31	31.94	21.37	13.51
1999	25.37	1,222.42	257.99	1,505.78	482.39	32.33	991.06	23.80	32.60	21.81	13.79
2000	32.33	1,222.63	266.46	1,521.42	513.30	25.64	982.47	23.40	32.02	21.42	13.55
2001	25.64	1,221.01	307.81	1,554.45	568.77	31.87	953.82	22.42	30.75	20.57	13.01
2002	31.87	1,259.44	311.32	1,602.63	612.63	31.14	958.85	22.32	30.58	20.46	12.94
2003	31.14	1,162.15	273.83	1,467.12	396.42	45.49	1,025.21	23.65	32.40	21.68	13.71
2004	45.49	1,456.68	112.43	1,614.60	590.02	40.13	984.45	22.50	30.82	20.62	13.04
2005	40.13	1,429.90	126.35	1,596.38	580.49	38.80	977.10	22.12	30.30	20.27	12.82
2006	38.80	1,291.73	147.37	1,477.90	456.86	47.61	973.43	21.81	29.88	19.99	12.64
2007	47.61	1,239.03	202.53	1,489.17	437.81	43.13	1,008.24	22.35	30.62	20.48	12.95
2008	43.13	1,251.11	192.20	1,486.44	477.61	31.60	977.23	21.42	29.34	19.63	12.41

1. Available data adjusted on boneless basis for retail, household, cooking and plate loss.

Table 7-3
Supply and disposition of red meat, Canada — Beef and veal total

	Beginning stocks	Production	Imports	Total supply	Exports	Ending stocks	Net supply	Available per person			Adjusted for loss ¹
								Retail	Carcass	Boneless	
thousands of tonnes							weight per year in kilogram				
1994	23.96	899.46	285.96	1,209.38	220.41	31.37	957.60	24.24	33.02	21.86	13.80
1995	31.37	928.21	255.78	1,215.36	219.59	24.65	971.12	24.33	33.14	22.07	13.93
1996	24.65	1,016.50	237.34	1,278.49	286.33	22.23	969.93	24.04	32.76	21.94	13.85
1997	22.23	1,089.48	253.13	1,364.84	360.37	22.70	981.77	24.10	32.83	21.98	13.88
1998	22.70	1,181.92	239.41	1,444.03	415.28	26.05	1,002.70	24.40	33.25	22.27	14.06
1999	26.05	1,263.53	261.14	1,550.73	487.53	32.92	1,030.29	24.87	33.89	22.69	14.33
2000	32.92	1,263.44	270.01	1,566.36	517.11	26.26	1,022.99	24.50	33.34	22.32	14.09
2001	26.26	1,261.61	310.25	1,598.12	572.65	32.91	992.56	23.45	32.00	21.43	13.53
2002	32.91	1,297.53	315.49	1,645.92	615.05	32.51	998.36	23.37	31.84	21.32	13.46
2003	32.51	1,203.61	276.54	1,512.66	399.96	48.62	1,064.08	24.67	33.63	22.52	14.22
2004	48.62	1,500.14	113.51	1,662.27	599.06	41.82	1,021.39	23.46	31.98	21.41	13.52
2005	41.82	1,469.98	128.76	1,640.56	589.08	40.51	1,010.96	22.99	31.35	20.99	13.25
2006	40.51	1,328.70	151.70	1,520.91	464.00	49.55	1,007.36	22.68	30.92	20.70	13.07
2007	49.55	1,277.56	205.61	1,532.72	444.07	45.01	1,043.64	23.25	31.70	21.22	13.40
2008	45.01	1,288.07	194.74	1,527.82	483.31	34.36	1,010.15	22.24	30.32	20.30	12.82

1. Available data adjusted on boneless basis for retail, household, cooking and plate loss.

**Table 7-4
Supply and disposition of red meat, Canada — Pork**

	Beginning stocks	Production	Imports	Total supply	Exports	Manufacturing	Waste	Ending stocks	Net supply	Available per person			Adjusted for loss ¹
										Retail	Carcass	Boneless	
thousands of tonnes									weight per year in kilogram				
1994	10.83	1,229.38	27.25	1,267.46	301.42	28.28	98.35	15.47	823.94	21.59	28.41	20.71	11.75
1995	15.47	1,275.76	27.19	1,318.42	357.04	29.34	102.06	15.20	814.78	21.13	27.81	20.27	11.50
1996	15.20	1,227.76	38.58	1,281.54	372.22	28.24	98.22	13.17	769.69	19.76	25.99	18.95	10.75
1997	13.17	1,256.70	59.63	1,329.50	420.19	28.90	100.54	19.68	760.19	19.32	25.42	18.53	10.51
1998	19.68	1,393.61	63.47	1,476.76	433.79	32.05	111.49	33.93	865.50	21.81	28.70	20.92	11.87
1999	33.93	1,563.87	64.61	1,662.41	553.71	35.97	125.11	32.78	914.84	22.87	30.09	21.94	12.45
2000	32.78	1,639.98	65.65	1,738.41	656.18	37.72	131.20	32.85	880.46	21.81	28.69	20.92	11.87
2001	32.85	1,731.13	89.38	1,853.36	732.57	39.82	138.49	44.82	897.66	22.05	28.94	21.10	11.97
2002	44.82	1,857.18	91.59	1,993.59	876.15	42.72	148.57	54.26	871.89	21.13	27.81	20.27	11.50
2003	54.26	1,880.74	89.63	2,024.63	988.59	43.26	150.46	48.20	794.13	19.08	25.10	18.30	10.38
2004	48.20	1,934.74	100.48	2,083.41	983.43	44.50	154.78	49.72	850.97	20.25	26.64	19.42	11.02
2005	49.72	1,918.46	134.30	2,102.48	1,102.95	44.13	153.48	59.34	742.59	17.50	23.03	16.79	9.52
2006	59.34	1,899.66	141.80	2,100.80	1,093.83	43.69	151.97	48.05	763.25	17.81	23.43	17.08	9.69
2007	48.05	1,898.00	168.48	2,114.53	1,044.64	43.65	151.84	56.46	817.94	18.88	24.84	18.11	10.27
2008	56.46	1,940.98	192.84	2,190.28	1,147.67	44.64	155.28	59.64	783.05	17.87	23.51	17.14	9.72

1. Available data adjusted on boneless basis for retail, household, cooking and plate loss.

**Table 7-5
Supply and disposition of red meat, Canada — Mutton and lamb**

	Beginning stocks	Production	Imports	Total supply	Exports	Ending stocks	Net supply	Available per person			Adjusted for loss ¹
								Retail	Carcass	Boneless	
thousands of tonnes							weight per year in kilogram				
1994	1.76	10.49	14.48	26.73	0.10	2.80	23.83	0.73	0.82	0.54	0.32
1995	2.80	10.23	12.97	26.00	0.08	2.17	23.75	0.72	0.81	0.53	0.32
1996	2.17	10.62	11.26	24.05	0.08	1.64	22.33	0.67	0.75	0.50	0.30
1997	1.64	10.18	12.42	24.24	0.23	1.88	22.13	0.66	0.74	0.49	0.29
1998	1.88	10.61	14.15	26.64	0.24	1.39	25.01	0.74	0.83	0.55	0.32
1999	1.39	11.42	15.04	27.84	0.27	1.52	26.06	0.76	0.86	0.56	0.34
2000	1.52	12.54	16.76	30.82	0.29	1.58	28.94	0.84	0.94	0.62	0.37
2001	1.58	14.25	18.14	33.97	0.30	1.58	32.09	0.92	1.03	0.68	0.41
2002	1.58	14.75	17.51	33.84	0.28	1.19	32.38	0.92	1.03	0.68	0.40
2003	1.19	15.76	18.45	35.40	0.09	1.11	34.21	0.96	1.08	0.71	0.42
2004	1.11	17.47	18.45	37.03	0.31	1.40	35.32	0.98	1.11	0.73	0.43
2005	1.40	17.55	19.30	38.24	0.26	1.96	36.02	0.99	1.12	0.73	0.44
2006	1.96	17.04	22.78	41.78	0.23	2.03	39.53	1.08	1.21	0.80	0.46
2007	2.03	16.78	23.88	42.69	0.42	2.17	40.11	1.08	1.22	0.80	0.48
2008	2.17	15.82	22.75	40.74	0.34	1.93	38.47	1.03	1.15	0.76	0.45

1. Available data adjusted on boneless basis for retail, household, cooking and plate loss.

Table 7-6
Supply and disposition of red meat, Canada — Offal

	Beginning stocks	Production	Imports	Total supply	Exports	Ending stocks	Net supply	Available per person			Adjusted for loss ¹
								Retail	Carcass	Boneless	
thousands of tonnes							weight per year in kilogram				
1994	3.10	84.14	21.62	108.86	60.63	4.30	43.93	1.51	1.51	1.51	0.86
1995	4.30	97.85	17.25	119.40	75.99	3.73	39.68	1.35	1.35	1.35	0.77
1996	3.73	110.06	16.59	130.38	86.16	4.82	39.40	1.33	1.33	1.33	0.75
1997	4.82	116.57	19.59	140.98	101.42	4.72	34.84	1.16	1.16	1.16	0.66
1998	4.72	123.75	21.53	150.00	103.64	5.36	41.01	1.36	1.36	1.36	0.77
1999	5.36	135.83	25.00	166.18	106.23	8.36	51.59	1.70	1.70	1.70	0.96
2000	8.36	147.60	21.76	177.72	138.61	7.15	31.96	1.04	1.04	1.04	0.59
2001	7.15	171.56	30.34	209.05	173.58	8.98	26.50	0.85	0.85	0.85	0.48
2002	8.98	181.47	34.31	224.75	180.88	11.13	32.74	1.04	1.04	1.04	0.59
2003	11.13	164.85	46.18	222.16	167.87	10.33	43.96	1.39	1.39	1.39	0.79
2004	10.33	174.43	35.68	220.44	160.98	11.49	47.98	1.50	1.50	1.50	0.85
2005	11.49	182.39	30.02	223.89	177.26	12.77	33.87	1.05	1.05	1.05	0.60
2006	12.77	167.22	37.07	217.05	170.72	7.46	38.87	1.19	1.19	1.19	0.68
2007	7.46	169.94	33.67	211.07	177.57	9.54	23.96	0.73	0.73	0.73	0.41
2008	9.54	194.14	27.48	231.17	205.02	8.35	17.80	0.53	0.53	0.53	0.30

1. Available data adjusted on boneless basis for retail, household, cooking and plate loss.

Table 7-7
Supply and disposition of red meat, Canada — Total red meat

	Beginning stocks	Production	Imports	Total supply	Exports	Manufacturing	Waste	Ending stocks	Net supply	Available per person			Adjusted for loss ¹
										Retail	Carcass	Boneless	
thousands of tonnes									weight per year in kilogram				
1994	39.65	2,223.47	349.31	2,612.43	582.56	28.28	98.35	53.94	1,849.30	48.07	63.76	44.62	26.73
1995	53.94	2,312.05	313.19	2,679.18	652.70	29.34	102.06	45.75	1,849.33	47.53	63.11	44.21	26.52
1996	45.75	2,364.94	303.77	2,714.46	744.79	28.24	98.22	41.86	1,801.35	45.80	60.82	42.71	25.65
1997	41.86	2,472.93	344.77	2,859.56	882.21	28.90	100.54	48.98	1,798.93	45.24	60.15	42.16	25.34
1998	48.98	2,709.89	338.56	3,097.43	952.95	32.05	111.49	66.73	1,934.22	48.31	64.14	45.10	27.02
1999	66.73	2,974.65	365.80	3,407.16	1,147.74	35.97	125.11	75.58	2,022.78	50.20	66.54	46.89	28.08
2000	75.58	3,063.56	374.18	3,513.32	1,312.19	37.72	131.20	67.85	1,964.34	48.19	64.01	44.90	26.92
2001	67.85	3,178.55	448.11	3,694.50	1,479.11	39.82	138.49	88.29	1,948.81	47.28	62.82	44.06	26.39
2002	88.29	3,350.93	458.90	3,898.11	1,672.36	42.72	148.57	99.09	1,935.37	46.46	61.72	43.31	25.95
2003	99.09	3,264.96	430.81	3,794.86	1,556.51	43.26	150.46	108.26	1,936.39	46.10	61.20	42.92	25.81
2004	108.26	3,626.78	268.12	4,003.15	1,743.78	44.50	154.78	104.43	1,955.66	46.19	61.23	43.06	25.82
2005	104.43	3,588.38	312.38	4,005.17	1,869.55	44.13	153.48	114.58	..	42.53	56.55	39.56	23.81
2006	114.58	3,412.62	353.35	3,880.55	1,728.78	43.69	151.97	107.09	1,849.01	42.75	56.75	39.77	23.90
2007	107.09	3,362.28	431.64	3,901.01	1,666.70	43.65	151.84	113.18	1,925.65	43.93	58.49	40.86	24.56
2008	113.18	3,439.01	437.81	3,990.01	1,836.34	44.64	155.28	104.28	1,849.48	41.67	55.52	38.74	23.29

1. Available data adjusted on boneless basis for retail, household, cooking and plate loss.

Concepts and methodology

Concepts

Inventory levels of sheep and lambs intended for sale in Canada are measured at specific times throughout the year. Surveyed operations are requested to include all animals located on the farming operation, regardless of ownership. They are also asked to include animals owned but pastured on a community pasture, grazing co-op or public land. Producers are asked to exclude animals owned but kept on a farm, ranch or feedlot operated by someone else. Inventory levels are estimated for several categories of sheep and lambs. Estimates are produced on the basis of age, sex, and/or purpose i.e. breeding or slaughter.

Current information on sheep and lamb inventories and related statistics such as supply and disposition enable those active in the agricultural sector to observe and assess changes in the industry, measure performance and keep the agricultural community and general public informed of developments. The primary data users are federal and provincial governments, producer boards, farmers and farm organizations, private business, academic research institutions and students. Sheep and lamb data assists governments in formulating agricultural policies and developing programs. Farming organizations use statistics in developing recommendations for producers and governments. Farmers make increasing use of prices, production, and marketing statistics in planning their operations. In addition, these livestock statistics are used in the calculation of farm incomes and in the Canadian System of National Accounts for indicators such as gross domestic product.

Methods

To produce sheep and lamb estimates, there are 4 different survey occasions. All of the survey occasions collect data primarily using Computer Assisted Telephone Interviews (CATI) although there are special procedures in place for the very large or complex operations.

Two of the occasions are the January Livestock Survey and the July Livestock Survey. These are large-scale general livestock surveys collecting data on cattle, hogs, sheep and other livestock, referring to inventories at the 1st of the month. The probability samples include about 10,260 operations at January 1, and about 16,260 operations at July 1. These surveys collect data during a three-week period in the western provinces, Ontario and Quebec. Regardless of when operators respond, they are asked to report inventories as of January 1 or July 1. The livestock survey results are released, following processing and analysis, approximately seven weeks after the reference date.

The June and November Atlantic Surveys are used to produce estimates for that region. These surveys are multi-purpose, collecting data, primarily inventories, on livestock including cattle, hogs and sheep in addition to collecting data related to the area, yield and production of the principal field crops. The probability samples are about 1,000 in June and 1,100 in November. The results are released at the same time as the livestock results. For reference points where surveys do not exist for the Atlantic region, analytical tools are used to produce the estimates.

Canadian exports to the United States are obtained from U.S. import custom documents and are officially released by the International Trade Division of Statistics Canada. These data try to register the province of origin of the commodity, but when unknown, will reflect the province of entry into the United States. Information from secondary sources is used by Agriculture Division of Statistics Canada to better estimate the province in which the commodity was raised/grown. Administrative data from the provinces are used to adjust the export numbers by province to better reflect provincial production. Though this methodology will result in different exports by province, the Canadian export totals will equal those released by International Trade Division.

To summarize, the sheep and lamb statistics are survey-based estimates. The survey relies on a list frame that is established every five years by the Census of Agriculture and updated to include new entrants. The probability sample surveys are conducted by telephone. The survey results are analysed and corrected before the data are used to analyse the industry and fine-tune the estimates. The survey data are reviewed in a board environment before the commodity analyst works with the data primarily using supply-disposition analysis. The results of the industry analysis are reviewed by the board before being sent to the individual provinces. Once the data are finalised they are released to the public and published. The principal data released include inventories and summarized supply-disposition tables. The data also flow, via farm income estimates, to the Canadian System of National Accounts. In addition the data are used in the calculation of net farm income projections, produced by Agriculture and Agri-Food Canada in co-operation with Statistics Canada and the provinces.

Wool statistics

This annual wool survey is a mailout/mailback census sent to all known Canadian wool purchasers. There are 11 such operations.

Questionnaires are mailed out in February following the target year and published in the February edition of Sheep Statistics catalogue number 23-011 the following year.

Data is collected on the quantities purchased, the province of origin of the wool and the prices paid to the producers.

Follow-up is carried out on non-response and imputation is effected when necessary.

The quality of the data is deemed to be satisfactory.