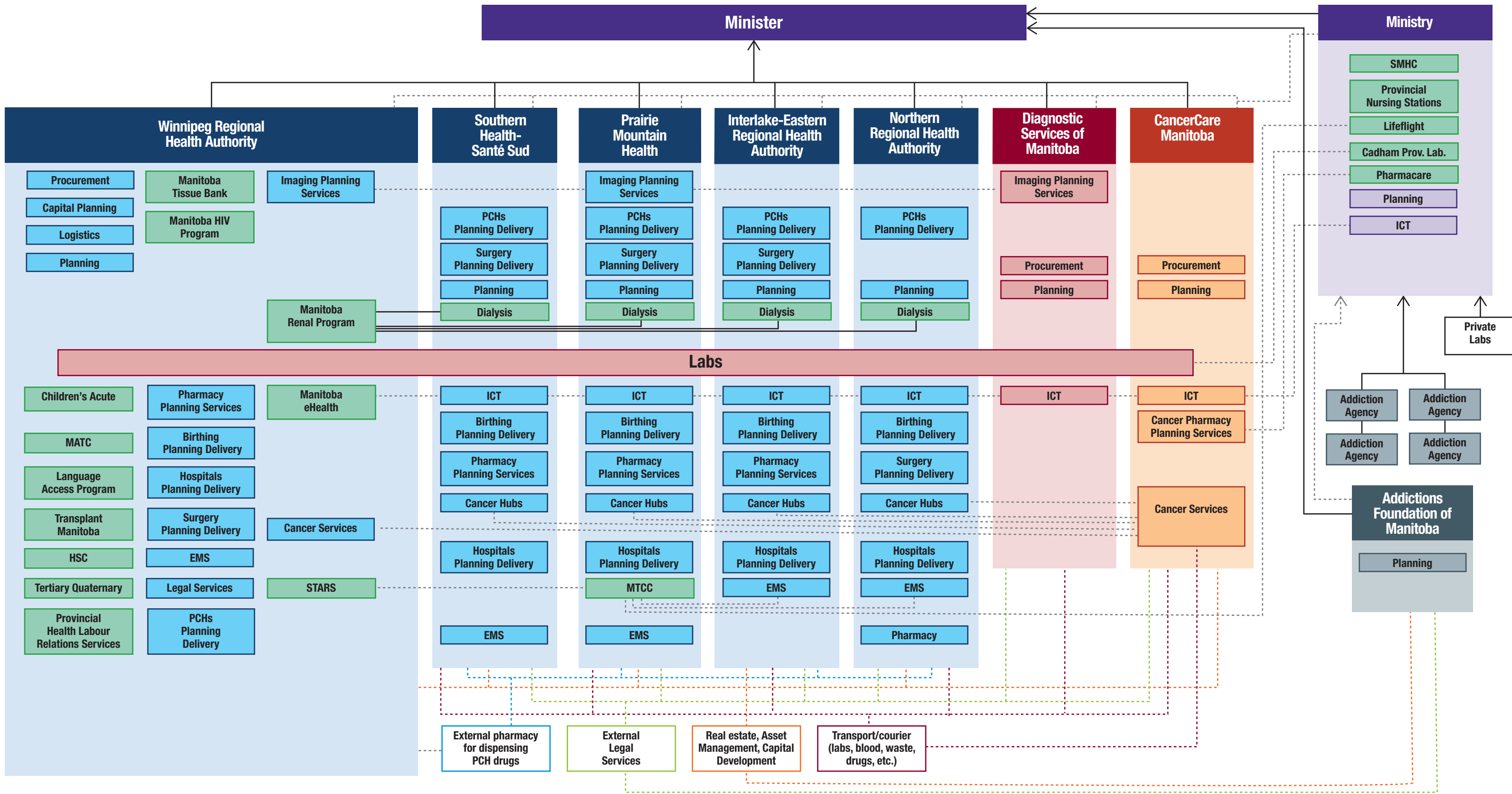


Manitoba Health System Current State



Legend:

- Green – provincial programs or services
- dashed line connotes a working relationship
- solid line with arrow shows accountable relationship
- solid line without arrow shows delivery of service in another site

Acronyms and Notes:

- This is not an exhaustive display of all services
- Imaging (ultrasound, MRIs, etc) – though linked, Winnipeg, Brandon (Prairie Mountain) and Diagnostic Services Manitoba (DSM) plan and deliver services separately
- Manitoba HIV Program – HIV – human immunodeficiency virus
- Manitoba Renal Program, housed in WRHA delivers dialysis in the other regional health authorities
- MATC – Manitoba Adolescent Treatment Centre
- HSC – Health Sciences Centre

- EMS – Emergency Medical Services – this term usually refers to the entirety of emergency medical response (land, air ambulance). EMS is used to show land ambulance in this chart. MTCC (Manitoba Transportation Coordination Centre) is housed in Prairie Mountain RHA; it dispatches each of the four rural regions land ambulances, Lifeflight and STARS. Lifeflight is housed in the Department, STARS is housed in the WRHA. Winnipeg EMS operates separately.
- STARS – Shock Trauma Air Rescue Society
- ICT (information communication technology) is located in every entity. There is a working relationship amongst the organizations led by eHealth but no accountability.

- Lab services are delivered by DSM across regional health authorities and CCMB. Cadham Public Labs is housed in the Department. The Department contracts with private labs.
- Each organization plans separately
- PCH – personal care home