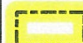





P:\Temporary Items\Miami\_Arcmap\miami\_drainage\_network\_2.mxd

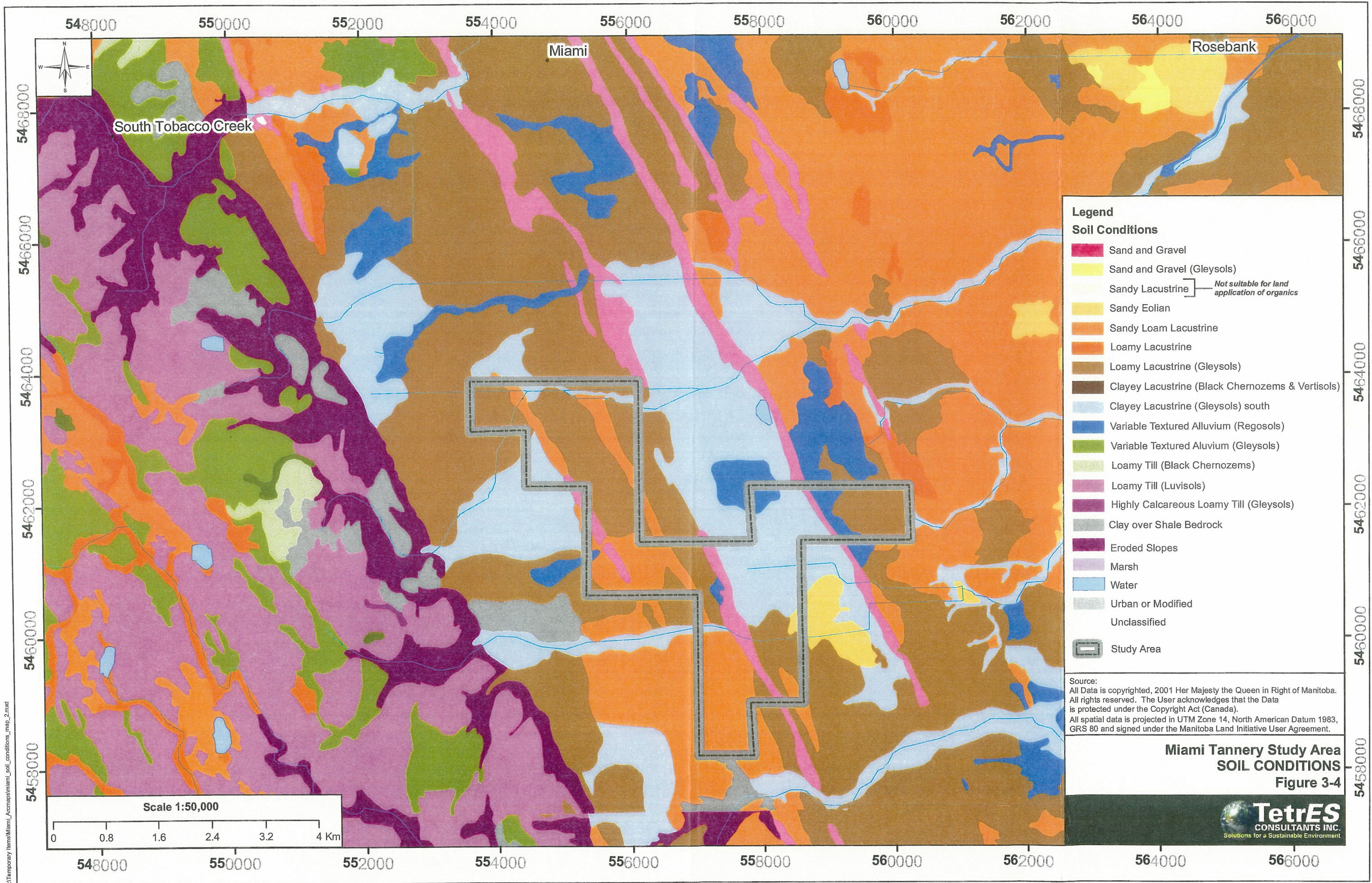
**Legend**

-  Study Area
-  Vegetation
-  Contours (meters)
-  Drainage

Source:  
 All Data is copyrighted, 2001 Her Majesty the Queen in Right of Manitoba. All rights reserved. The User acknowledges that the Data is protected under the Copyright Act (Canada).  
 All spatial data is projected in UTM Zone 14, North American Datum 1983, GRS 80 and signed under the Manitoba Land Initiative User Agreement.

**Miami Tannery Study Area  
 DRAINAGE NETWORK  
 Figure 3-3**

**TetrES**  
 CONSULTANTS INC.  
 Solutions for a Sustainable Environment



**Legend**

**Soil Conditions**

- Sand and Gravel
- Sand and Gravel (Gleysols)
- Sandy Lacustrine } *Not suitable for land application of organics*
- Sandy Eolian
- Sandy Loam Lacustrine
- Loamy Lacustrine
- Loamy Lacustrine (Gleysols)
- Clayey Lacustrine (Black Chernozems & Vertisols)
- Clayey Lacustrine (Gleysols) south
- Variable Textured Alluvium (Regosols)
- Variable Textured Aluvium (Gleysols)
- Loamy Till (Black Chernozems)
- Loamy Till (Luvisols)
- Highly Calcareous Loamy Till (Gleysols)
- Clay over Shale Bedrock
- Eroded Slopes
- Marsh
- Water
- Urban or Modified
- Unclassified
- Study Area

Source:  
 All Data is copyrighted, 2001 Her Majesty the Queen in Right of Manitoba.  
 All rights reserved. The User acknowledges that the Data is protected under the Copyright Act (Canada).  
 All spatial data is projected in UTM Zone 14, North American Datum 1983, GRS 80 and signed under the Manitoba Land Initiative User Agreement.

**Miami Tannery Study Area  
 SOIL CONDITIONS  
 Figure 3-4**



P:\Temporary Items\Miami\_Arcmap\miami\_soil\_conditions\_map\_2.mxd