

APPENDIX D
ENVIRONMENTALLY SENSITIVE SITES MAPBOOK

Northwest Gas Transmission Project

Project Infrastructure

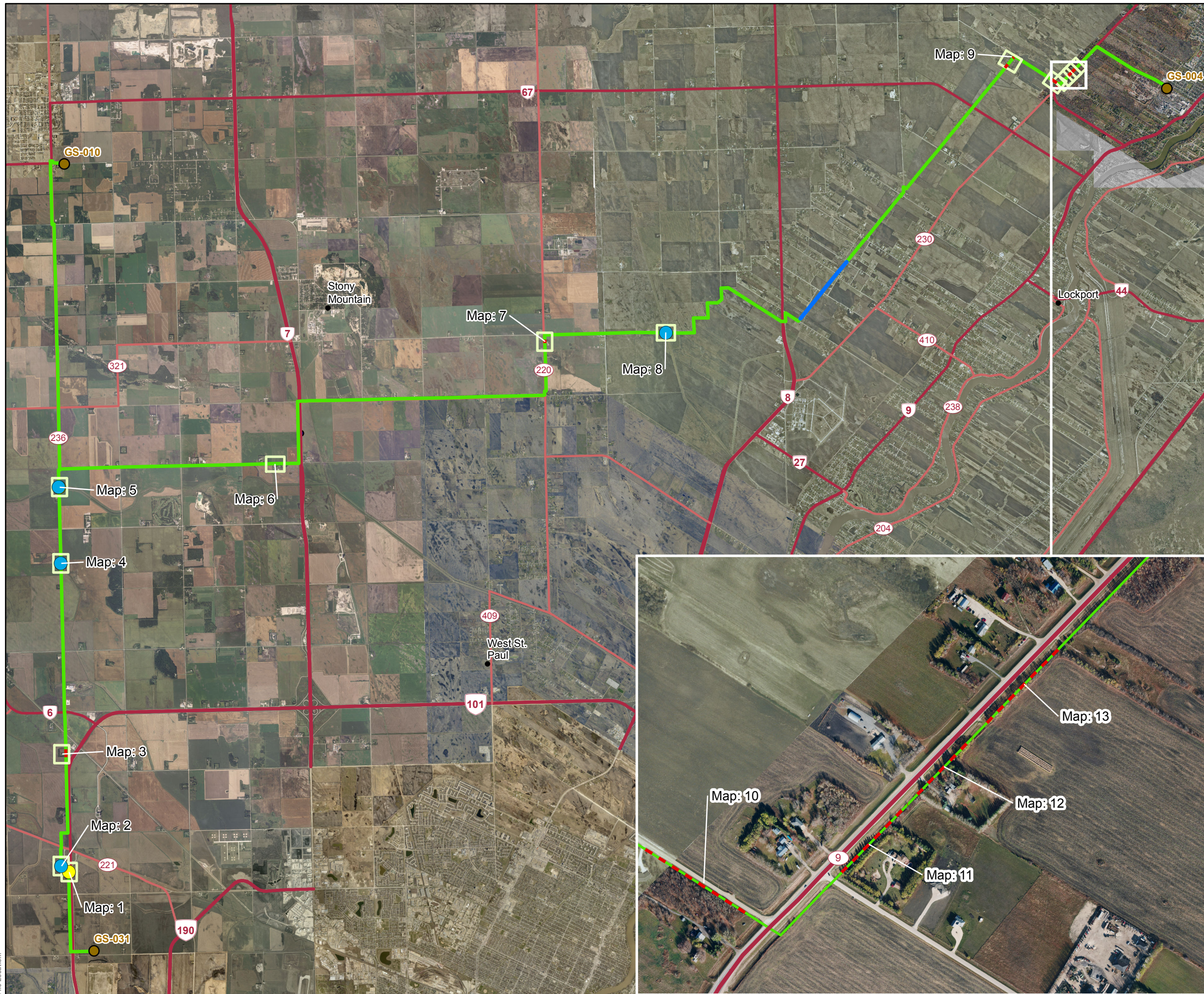
- Final Preferred Route
- Existing Natural Gas Pipeline

Infrastructure

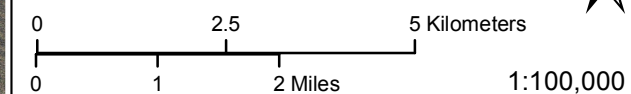
- Gate Station - Gas
- Provincial Road
- Provincial Trunk Highway

Environmentally Sensitive Sites

- Wildlife, Birds and Habitat
- Water Crossing
- - - Shelterbelt



Coordinate System: UTM Zone 14N NAD83
 Data Source: MBHydro, ProvMB
 Date Created: April 7, 2016



Environmentally Sensitive Sites Overview

Draft: For Discussion Purposes Only