

ESS ID: NWGAS-Aqua-103

Mitigation: Horizontal Directional Drill to follow all measures outlined in the EPP including:

- Directional Drilling (PA-13)
- Appendix B, Horizontal Directional Drill Execution Plan
- Appendix C, Frac-out Contingency Plan




Northwest Gas Transmission Project

Project Infrastructure


 Final Preferred Route


Infrastructure

 Provincial Road

 Provincial Trunk Highway

ESS

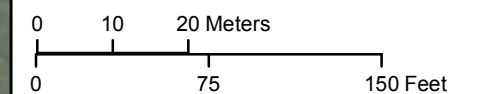
 Wildlife, Birds and Habitat

 Water Crossing

NWGAS-Aqua-103
Parks Creek
Easting: 636502
Northing: 5549097

All coordinates displayed are approximate and should only be used as a general guide.

Coordinate System: UTM Zone 14N NAD83
Data Source: MBHydro, ProvMB
Date Created: April 1, 2016



1:1,000

Environmentally Sensitive Sites

Draft: For Discussion Purposes Only

Map: 8

ESS ID: NWGAS-RUse-103

Mitigation: Horizontal Directional Drill to follow all measures outlined in the EPP including:

- Directional Drilling (PA-13)
- Appendix B, Horizontal Directional Drill Execution Plan



Northwest Gas Transmission Project

Project Infrastructure

Final Preferred Route

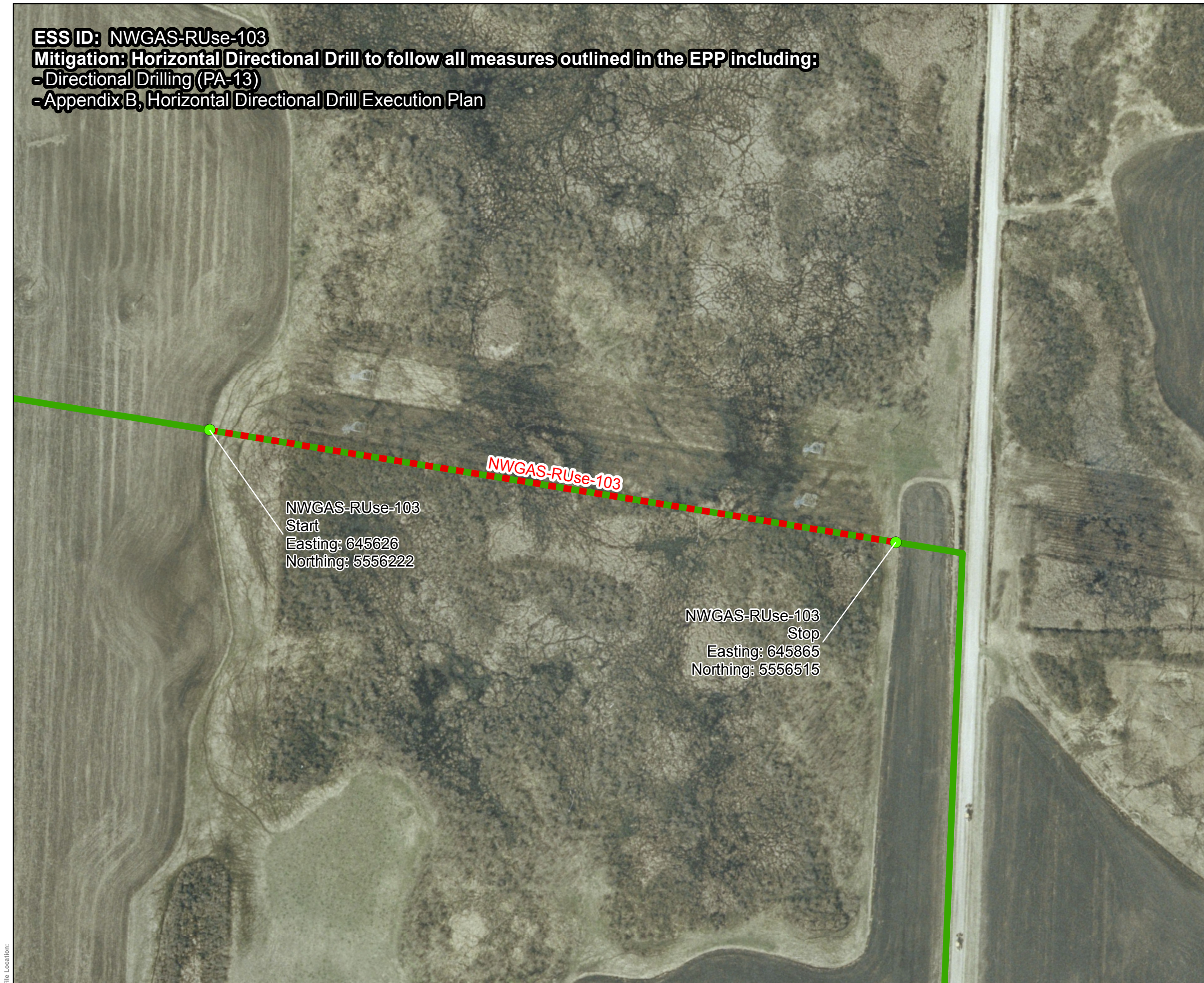
Infrastructure

Provincial Road

Provincial Trunk Highway

ESS

- Adjacent ESS Start/Stop
- Wildlife, Birds and Habitat
- Water Crossing
- Shelterbelt



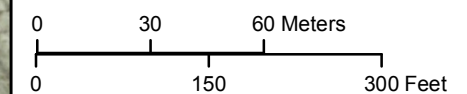
NWGAS-RUse-103
Start
Easting: 645626
Northing: 5556222

NWGAS-RUse-103
Stop
Easting: 645865
Northing: 5556515

NWGAS-RUse-103

All coordinates displayed are approximate and should only be used as a general guide.

Coordinate System: UTM Zone 14N NAD83
Data Source: MBHydro, ProvMB
Date Created: April 1, 2016



1:2,000

Environmentally Sensitive Sites