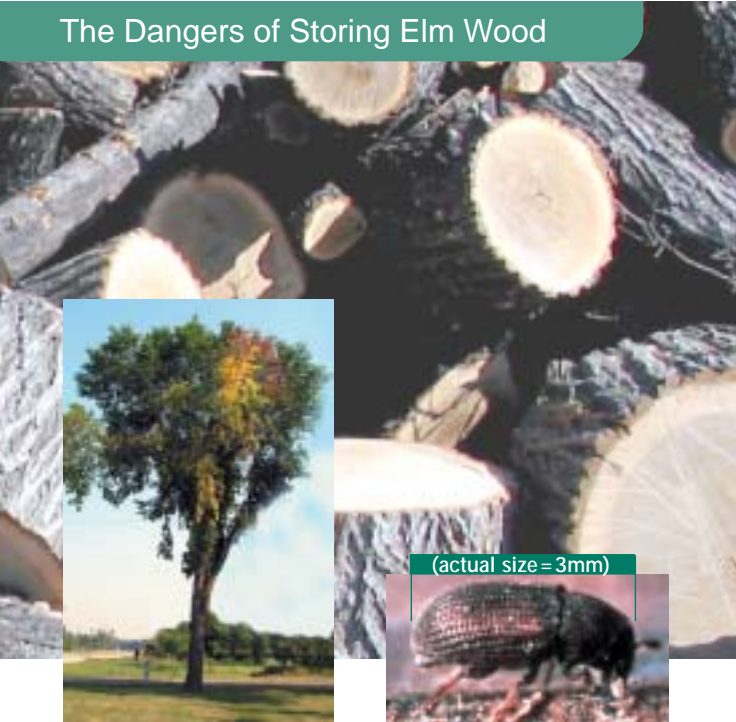


# Dutch Elm Disease

# Identifying Elm Wood

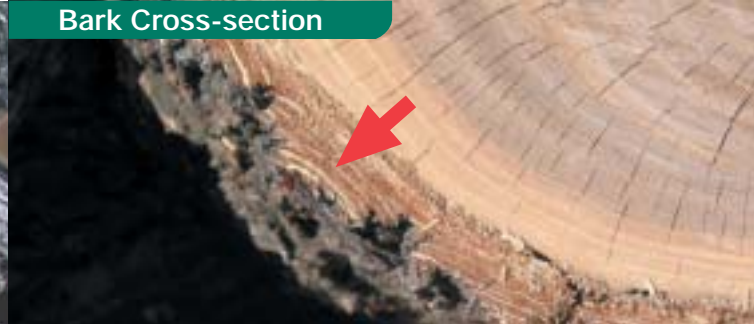
## The Dangers of Storing Elm Wood



## Why should we be concerned?

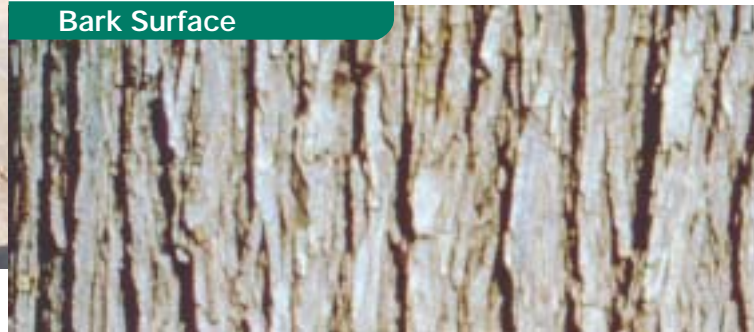
- Stored elm wood is a breeding ground for elm bark beetles.
- Dutch elm disease is a fungus carried by elm bark beetles.
- **All** stored elm wood spreads Dutch elm disease by breeding elm bark beetles.
- It is illegal to store or transport all elm wood in Manitoba.

## Bark Cross-section



- Alternate brown and beige layers of bark.

## Bark Surface



- Dark grey to grey brown.
- Composed of broad intersecting ridges.

## What To Do With Stored Elm Wood?

Burn on site immediately (if allowed) or remove directly to a designated disposal site.  
(Contact your municipality)

### For More Information Contact:

Manitoba Conservation

in Brandon 726-6444

all other areas (204) 945-7866

or Toll free 1-866-626-4862

or visit: [www.gov.mb.ca/conservation/forestry/urban-forest/u\\_contents.html](http://www.gov.mb.ca/conservation/forestry/urban-forest/u_contents.html)

The City of Winnipeg 986-7623