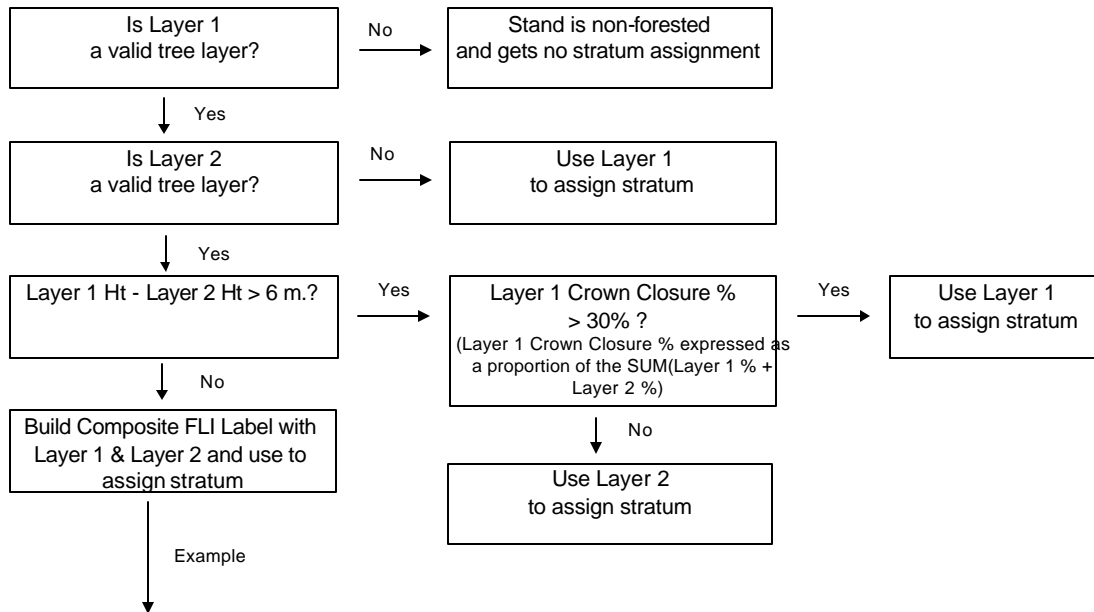


Appendix III. Forest Type Decision Rules



Example

Composite Crown Closure
 Comp. Cr. Clos. % = SUM(Layer 1 + Layer 2)
 Can be greater than 100% for subsequent calculations but max. of 100 for generating Composite Label

Composite Stand Height
 St. Ht. = AVERAGE (Layer 1 Ht + Layer 2 Ht)
 weighted by Crown Closure % of individual layer expressed as a proportion of Composite Crown Closure

Species Composition Example

45% TA₆ WS 4 23 m
 75% WS₈ BF₂ 19 m

Comp. Cr. Clos. % = 45 + 75 = 120

TA% = (45/120)(60) = 22.5
 WS% = (45/120)(40) + (75/120)(80) = 65.0
 BF% = (75/120)(20) = 12.5

Ht = (45/120)(23) + (75/120)(19) = 20.5

Resultant Label: 100% WS₇ TA₂ BF₁ 20 m
 Assign to Pure White Spruce Species Group,
 16-20 m Height Class, High Density Class