

Public Review on Proposed Changes to Trapping Policy

in Manitoba's Provincial Parks and Other Crown Lands With Recreational Developments

In December 2012, two dogs were killed in traps while they were off-leash in two provincial parks in the Open Trapping Area. Under legislation, dogs must be kept on a leash and under direct control in provincial parks. Trapping was permitted within these two parks.

To address public and pet safety concerns that have arisen as a result of these incidents, the Manitoba government has been conducting a review of trapping in provincial parks and other high use recreation areas on Crown lands. Interim restrictions have been put in place on licensed trapping within provincial parks until such time that the province completes this review.

Trapping Occurs in Most of Manitoba

Registered Trapline (RTL) and Open Trapping areas have a long history of co-existing with recreation-based developments in provincial parks and Crown lands. Most of Manitoba is RTL area. Our largest and highest-use provincial parks, including Whiteshell, Nopiming and Duck Mountain, also occur in RTL areas. Currently, six provincial parks have permanent prohibitions on trapping: Beaudry, Birds Hill, Memorial, St. Norbert, Duff Roblin and Pembina Valley.

Park Use is Increasing

In recent years, the use of provincial parks and surrounding areas has changed. More people are visiting and living full-time in parks. Outside of park boundaries, encroaching municipal and recreational developments are bringing in new park users. Continued increases in park use and Crown lands with recreation developments may lead to more conflict between trapping and recreation activities and result in public safety concerns.

Traps are More Powerful

The traps themselves are also changing. To meet The Agreement on International Humane Trapping Standards, traps have become more powerful, efficient, and therefore more humane.

Proposed Changes to Trapping

To address safety issues, the province has developed several proposed changes to its trapping policies and subsequent regulations. The proposed changes aim to increase public and pet safety in high-use, multi-use areas and reduce the chance of accidentally injuring park users or capturing dogs.

Proposed Elements for Communication and Education

Province-wide education of the general public and all park and Crown land users using current information sources (ex: annual department publications such as the parks guide) about:

- the multi-use nature of parks and Crown lands
- the responsible use of parks and Crown lands
- the changing visitor use of parks and Crown lands
- the strong history of trapping in Manitoba and Canada
- trapping as part of the current rural economy and way of life
- the need for trapping to address wildlife conflicts
- public and pet safety in active trapping areas
- safe trapping methods in areas used by the public
- park regulations such as the leash laws
- trapping regulations

Local education will be encouraged in the form of:

- voluntary marking of trapping trails
- trapper information events
- personal and non-personal interpretation programs in parks

Proposed Restrictions in Provincial Parks

These proposed restrictions only apply within the boundaries of provincial parks.

1. The following 12 parks will have no trapping restrictions:

| | | |
|-------------------|-----------------------|---------------|
| Atikaki | Little Limestone Lake | Birch Island |
| Manigotagan River | Caribou River | Nueltin Lake |
| Colvin Lake | Numaykoos Lake | Fisher Bay |
| Sand Lakes | Kettle Stones | South Atikaki |

2. The following 57 provincial parks will be closed to trapping:

| | | |
|------------------------|----------------------|--------------------|
| Assessippi | Margret Bruce | Rocky Lake |
| Bakers Narrows | Moose Lake | Sasagiu Rapids |
| Beaver Creek | Neso Lake | Seton |
| Bell Lake | Netley Creek | Springwater |
| Birch Point | Norris Lake | St. Ambroise Beach |
| Burge Lake | North Steeprock Lake | St. Malo |
| Camp Morton | Oak Lake | Stephenfield |
| Criddle/Vane Homestead | Overflowing River | Swan River |
| Grand Beach | Patricia Beach | Trappist Monastery |
| Grand Rapids | Pinawa | Twin Lakes |
| Grand Valley | Pinawa Dam | Wallace Lake |
| Hnaua Beach | Pisew Falls | Watchorn |
| Hyland | Poplar Bay | Wekusko Falls |
| Lake St. Andrew | Portage Spillway | Whitefish Lake |
| Lake St. George | Primrose | William Lake |
| Lockport | Rainbow Beach | Winnipeg Beach |
| Lundar Beach | Red Deer River | Woodridge |
| Manipogo | River Road | Yellow Quill |
| Marchand | Rivers | Zed Lake |

3. Trapping will be permitted, with restrictions, (described in #4 and #5 on page 4) in the following 11 parks:

| | | |
|-----------------|------------------|------------------|
| Clearwater Lake | Paint Lake | Duck Mountain |
| Spruce Woods | Elk Island | Turtle Mountain |
| Grass River | Whitemouth Falls | Hecla/Grindstone |
| Whitshell | Nopiming | |

4. In the 11 provincial parks listed in #3 (on page 3), trapping will be prohibited within 150 metres of developments or improvements including, but not limited to:

- cottage subdivisions
- campsites/campgrounds (excluding designated backcountry campsites)
- picnic areas
- playgrounds
- golf courses
- ski hills
- lodges (excluding remote lodges)
- youth, scout or bible camps
- boat launches
- interpretive centres
- day-use areas
- staging areas and parking lot
- either side of the centre line of designated trails for non-motorized use (ex: hiking trails) or multi-use trails with both motorized and non-motorized designations (ex: Mossberry Trail in Duck Mountain)
- either side of the centre line of a cottage subdivision road, private cottage subdivision roads or service and access roads maintained by Manitoba Parks

5. Special permits will be required to trap within Hecla/Grindstone, Elk Island and Whitemouth Falls provincial parks. Site specific restrictions apply to these three parks (see attached maps).

6. Under the authority of a special permit, trapping to address conflicts with wildlife will be permitted within trapping-restricted areas and parks closed to trapping as described in #2, #3 (on page 3), #4 and #5 above.

7. Except where the below listed fall within parks closed to trapping, or restricted areas as described in #2 , #3 (on page 3), #4 and #5 above, trapping will be permitted to continue along:

- numbered highways or municipal roads
- designated trails for motorized use (ex: Snoman Inc. trails, ATV trails, backcountry vehicle trails)
- designated canoe routes and their portage
- non-designated trails
- resource roads
- private utility roads (ex: Manitoba Hydro's road between Pointe du Bois and Slave Falls)
- utility corridors (ex: power line right-of-ways)
- the Fox Trail on the north side of Highway 8 in the Grassy Narrows Marsh within Hecla/Grindstone Provincial Park
- the trails within Spruce Woods Provincial Park that are dual designated as equestrian and snowmobile trails

Proposed Restrictions to be Applied to Other Crown Lands Developed for Recreation

Except as otherwise approved by special permit, legislation or land use plan (ex: trapping in Oak Hammock Marsh Wildlife Management Area [WMA]), trapping will be prohibited within:

- 150 metres of the edge of a development or improvement operated and managed by the Crown (ex: Crown land cottage subdivision)
- 150 metres of either side of the centre line of designated trails operated and managed by the Crown for non-motorized activities (ex: Narcisse WMA interpretive trail) or multi-use trails with both motorized and non-motorized use

A regulation is proposed that would allow the Conservation and Water Stewardship Minister to prohibit trapping within 150 metres of specific, developed, high-use recreation areas that are operated and maintained by non-government organizations (ex: trails group/association).

- This will not be applicable to snowmobile trails, or other trails designated for motorized use.
- The designated trails, developments or improvements on Crown land must be approved and/or authorized by the Manitoba government (ex: through a general permit).
- The operating body must apply to the province to have the trapping restriction applied and the restriction may not apply to all areas.
- Guidelines and criteria for screening applications will need to be developed.

We Want to Hear From You

Suggestions and feedback on these proposed changes to trapping in Manitoba are welcome. Your comments will be used to shape the future of trapping in provincial parks and recreation areas on Crown lands.

Comments can be mailed, faxed or emailed to:

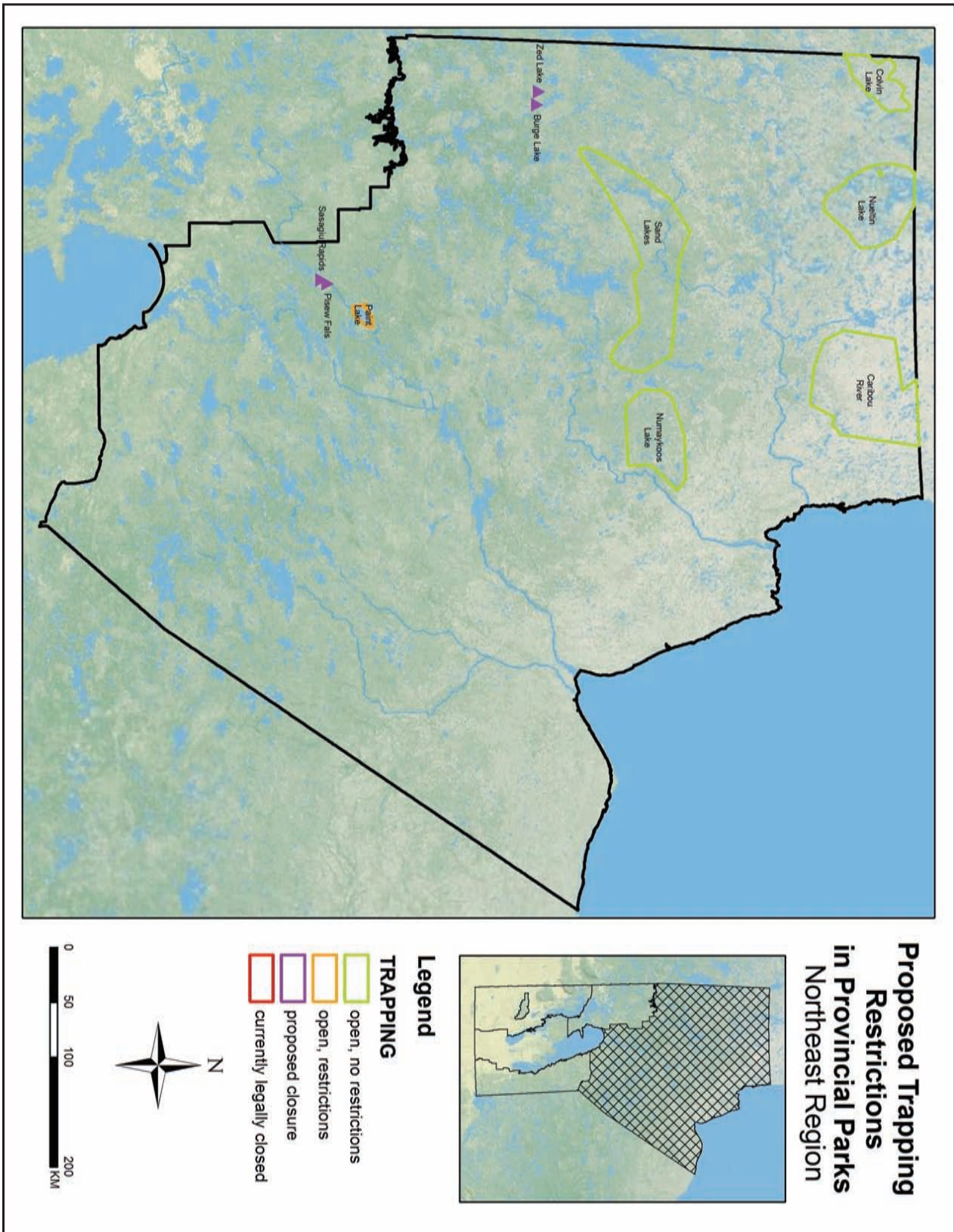
Proposed Changes to Trapping

Manitoba Conservation and Water Stewardship
Box 24, 200 Saulteaux Crescent
Winnipeg, Manitoba
R3J 3W3

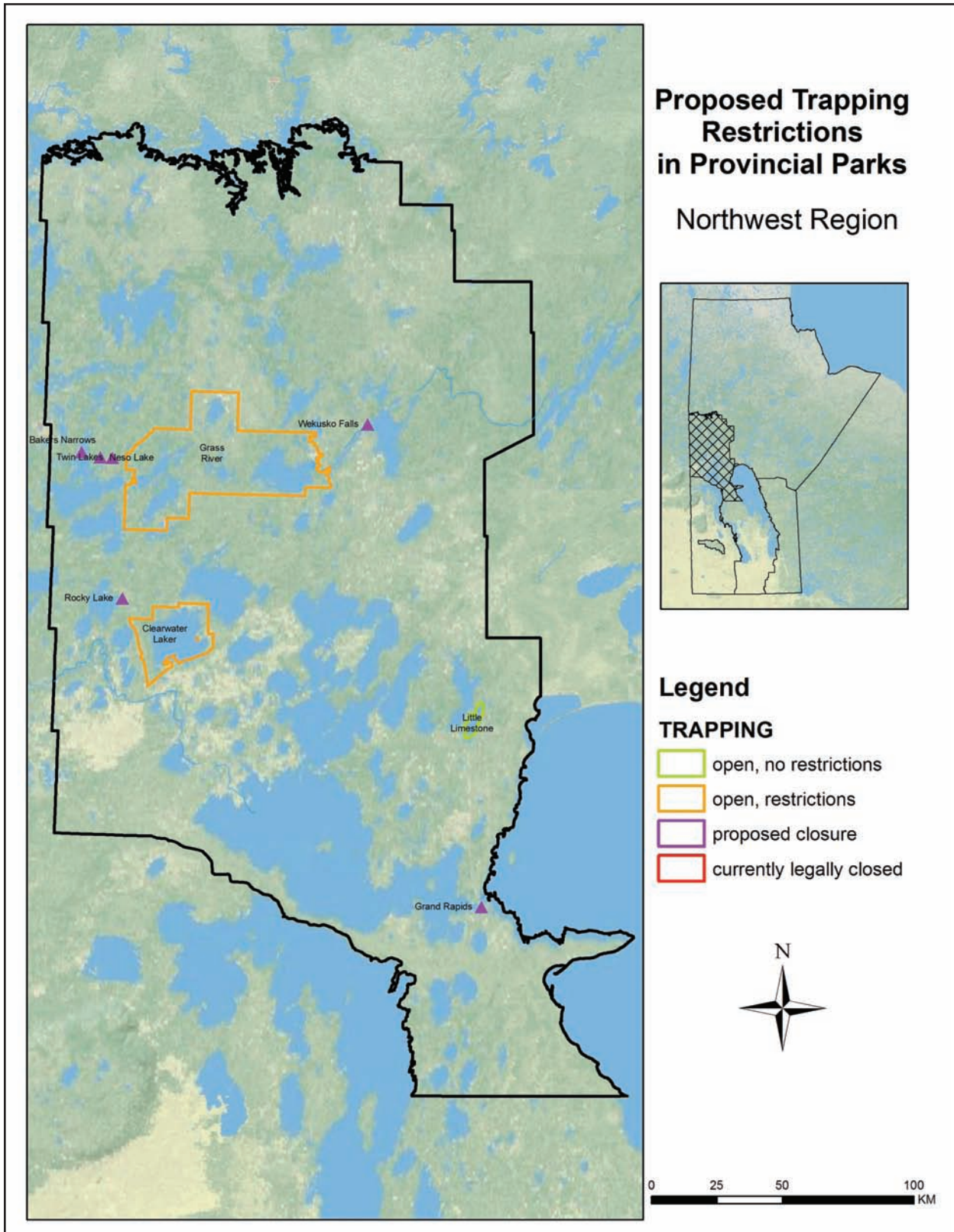
Email: wildlife@gov.mb.ca

Fax: 204-945-3077

Proposed Trapping Restrictions in Provincial Parks NORTHEAST REGION

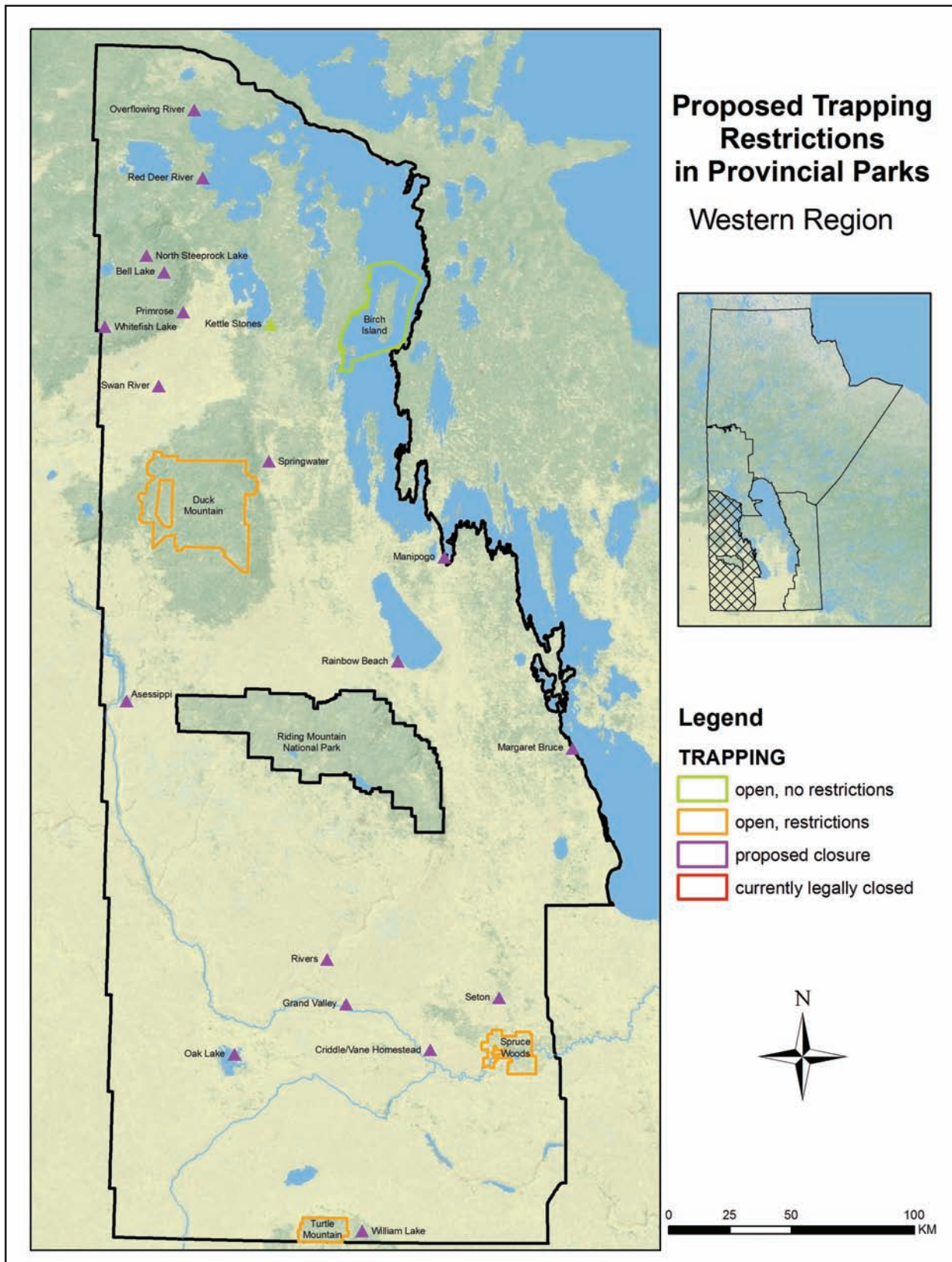


Proposed Trapping Restrictions in Provincial Parks NORTHWEST REGION



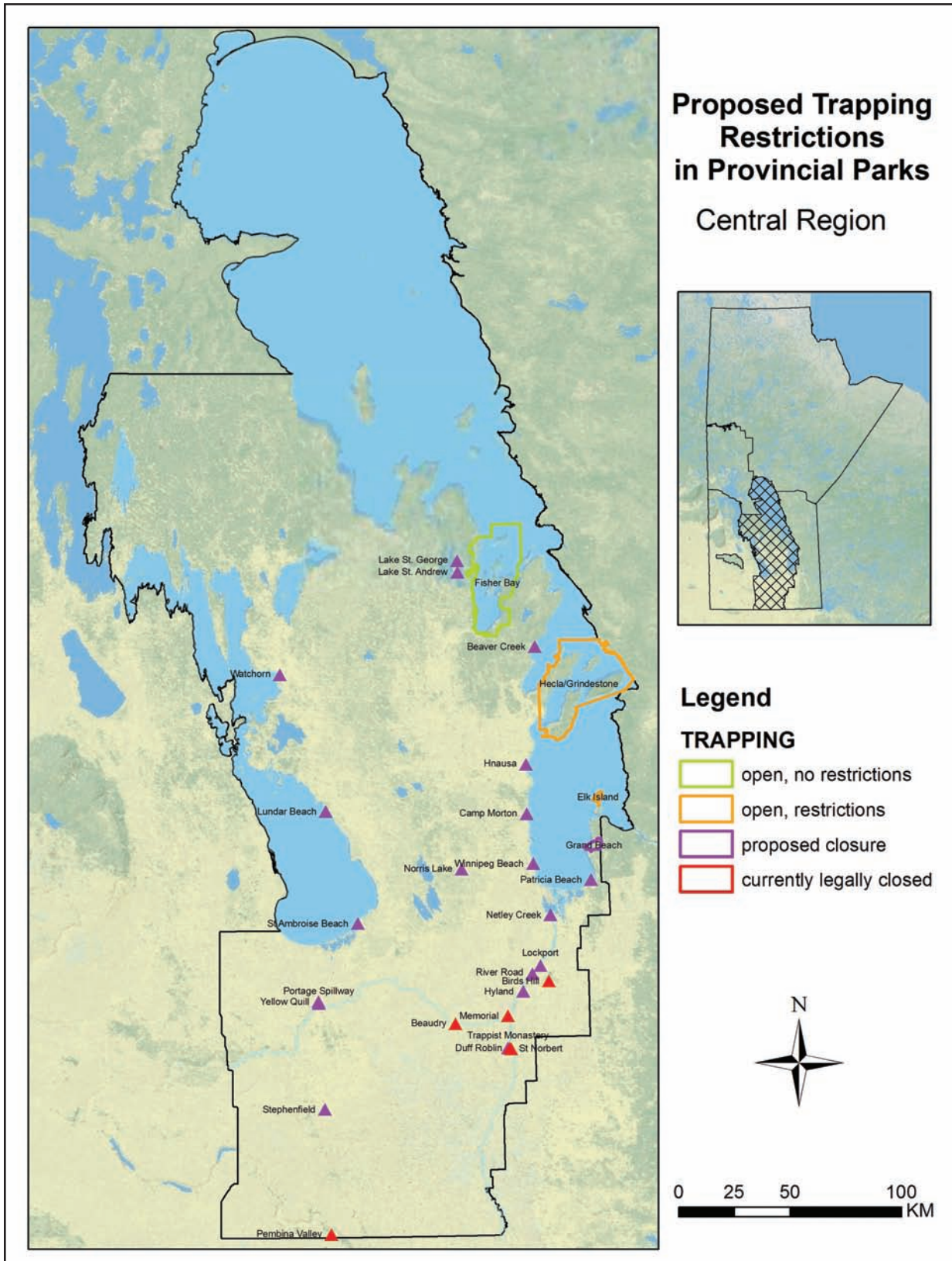
Proposed Trapping Restrictions in Provincial Parks

WESTERN REGION



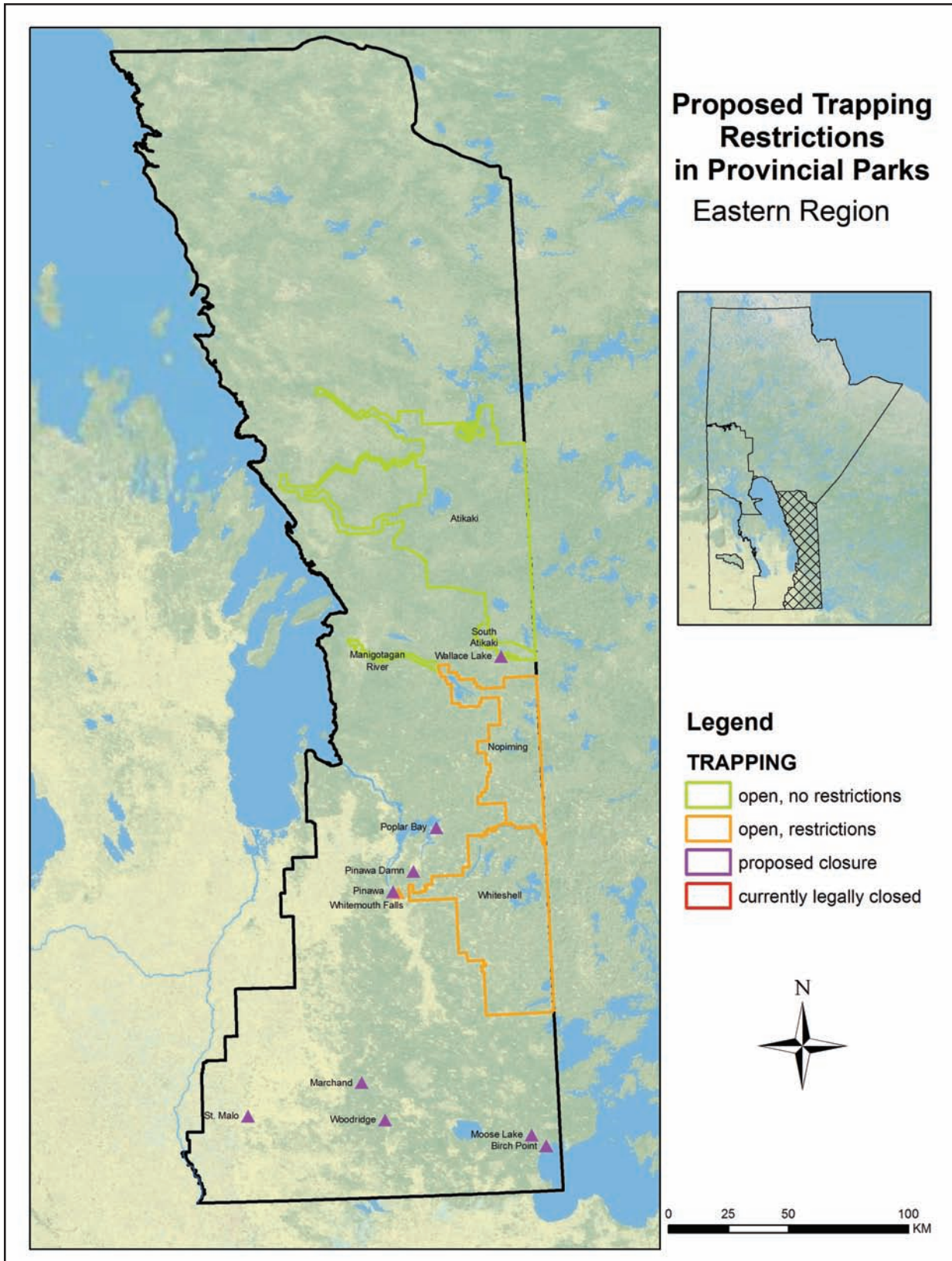
Proposed Trapping Restrictions in Provincial Parks

CENTRAL REGION



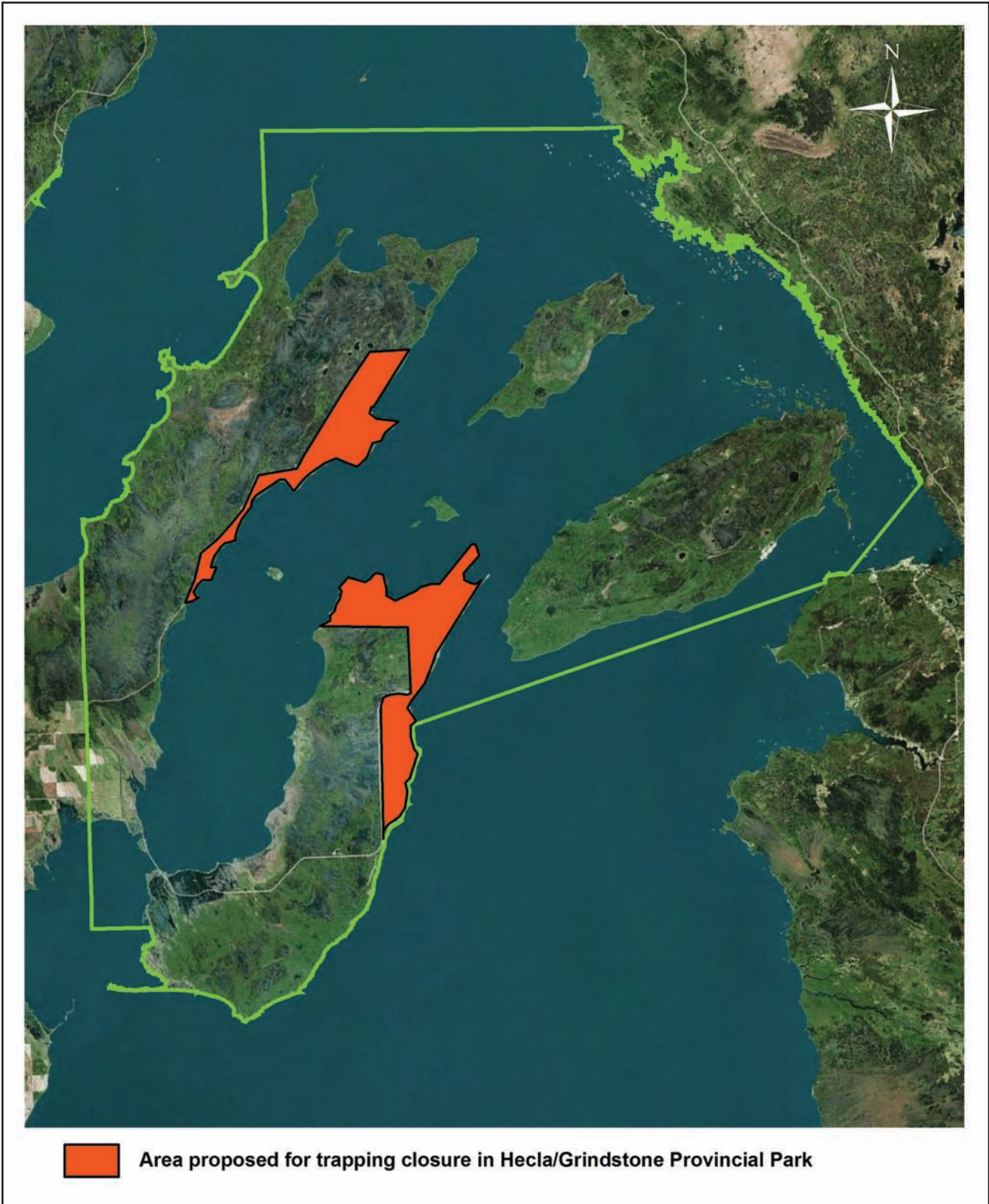
Proposed Trapping Restrictions in Provincial Parks

EASTERN REGION



Proposed Trapping Closure in Provincial Parks

HECLA/GRINDSTONE PROVINCIAL PARK



Proposed Trapping Closure in Provincial Parks

ELK ISLAND PROVINCIAL PARK



Proposed Trapping Closure in Provincial Parks

WHITEMOUTH FALLS PROVINCIAL PARK

