



My Fish Booklet

Outcome:

1-1-03: Identify and describe common characteristics of humans and other animals they have observed.

Materials:

- writing utensil
- colouring utensils
- hole punch
- string or brass fasteners

Teacher's Instructions:

1. Make copies of the “front” and “back” pages provided on pages 3 and 4 of this package to make the covers for your students' fish booklets.
2. Discuss the features of a fish with your students. Notice the different body parts labeled on pages 2-3.
3. As students complete *Similarities and Differences*, *How am I like a fish?*, *Can you take care of us?* and *Meeting Needs* for outcomes 1-1-03, 1-1-06, 1-1-07, 1-1-09, and 1-1-10, they can insert these worksheets into their fish booklet. Once they have completed all the worksheets, help them hole punch their booklets and fasten the pages together with string or brass fasteners.

Teacher Background Information:

A **plant** is an organism that cannot move, has no obvious nervous or sensory organs, and possesses cellulose cell walls. Plants are usually green. They have chlorophyll and perform photosynthesis. Plants are **producers** and ultimately support all forms of animal life.

An **animal** is generally any living organism other than a plant. Animals can move, have sensory organs, and have body structure (skeletons, skin, etc.). They breathe oxygen. Animals are **consumers**; they cannot produce their own food but survive by eating other living things.

Continued on page 2

Teacher Background Information (Cont'd.):

Fish are obviously animals because they move, they have sensory organs (eyes, mouth, barbels), and they have body structure (skeletons, skin, etc.). They breathe oxygen. They eat other organisms to survive.

Fish are different from other animals because they live in water. They are cold-blooded. This means that they rely on the environment to regulate their body temperature. They breathe by "inhaling" water through their mouths. This water passes over their gills and then exits their bodies. The gills absorb oxygen from the water as it flows over them. Fish have fins to help them move through and keep their balance in the water. Most fish also have a swim bladder, a gas-filled sac near their spine which helps them with buoyancy.

Fish have scales, which may be quite large or barely visible to the naked eye, depending on the species of fish. For example, walleye scales are quite visible. On the other hand, catfish appear to have smooth skin because their scales are so small.

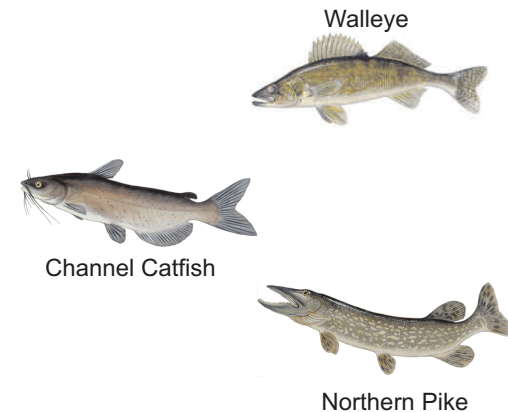
Some fish, such as catfish, have barbels or fleshy feelers ("whiskers") that hang in front of their mouths. Barbels are sensory structures that help fish find food as they swim along the bottom of a river or lake.

Some fish have spines while other species do not. Fish may have spines in their dorsal fins (the fins on their back), like a walleye, or along the leading edge of their pectoral fins (fins along the side of their body where their "arms" would be), like a catfish.

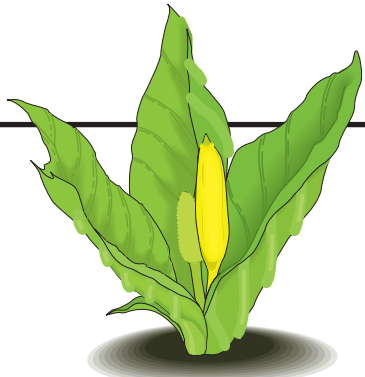
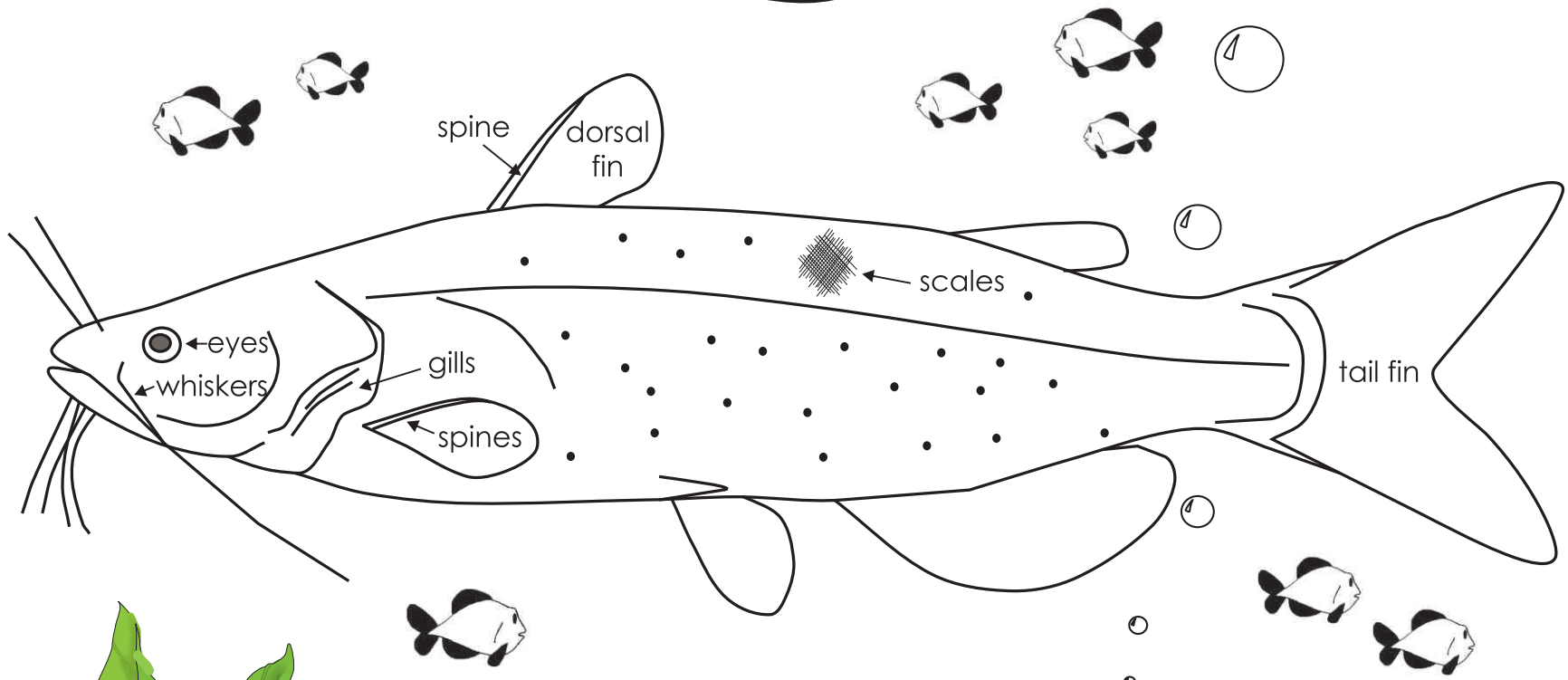
Some fish have more fins than others. For example, a walleye has two dorsal fins - one with 12-16 spines and the other without spines. A catfish has only one dorsal fin, which has one stout spine along the leading edge. A catfish has an adipose fin, which is a fleshy fin on its back behind the dorsal fin. A catfish's caudal (tail) fin is deeply forked with sharp tips; a walleye's caudal fin is less deeply forked and the tips are rounded.

Some fish are piscivorous (eat other fish). Northern pike (shown on page 4) and walleye prey on other fish. These fish have big eyes to see their prey and strong teeth to catch and eat it. Catfish do not have obvious teeth, as they are omnivorous and gulp down whatever they find on the bottom of a river or lake. Catfish have very small eyes. They live in murky water and depend more on their sensory barbels to find their food than their eyesight.

Catfish are dusty-grey to dark grey-blue in colour and often have scattered dark spots. Northern pike are generally dark olive-brown on top and silvery on the side with lighter spots. Walleye are olive-brown to golden to yellow in colour and the lower tip of their caudal (tail) fin is white.



My Fish Booklet



Name: _____

