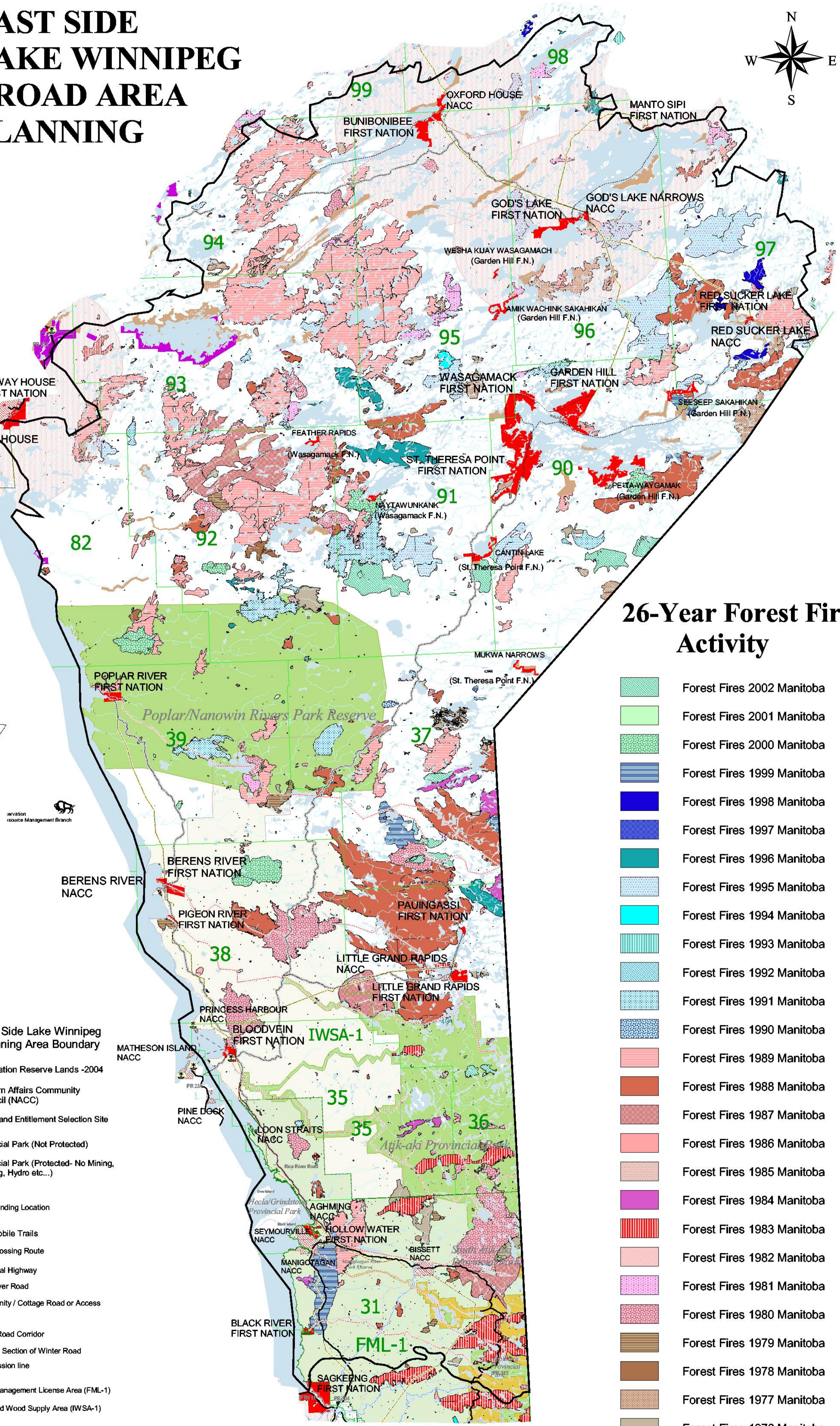
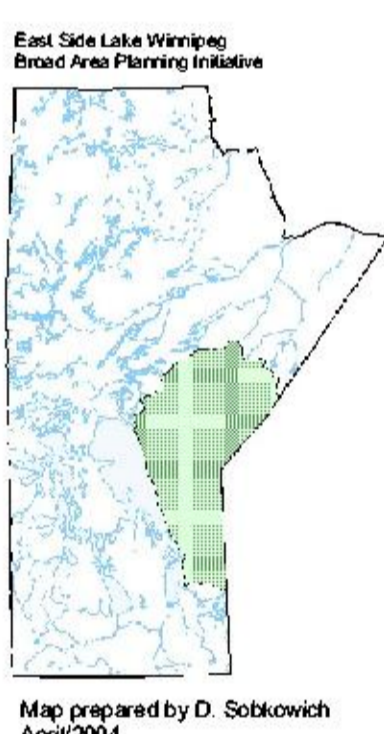


# EAST SIDE LAKE WINNIPEG BROAD AREA PLANNING



## 26-Year Forest Fire Activity

- Forest Fires 2002 Manitoba
- Forest Fires 2001 Manitoba
- Forest Fires 2000 Manitoba
- Forest Fires 1999 Manitoba
- Forest Fires 1998 Manitoba
- Forest Fires 1997 Manitoba
- Forest Fires 1996 Manitoba
- Forest Fires 1995 Manitoba
- Forest Fires 1994 Manitoba
- Forest Fires 1993 Manitoba
- Forest Fires 1992 Manitoba
- Forest Fires 1991 Manitoba
- Forest Fires 1990 Manitoba
- Forest Fires 1989 Manitoba
- Forest Fires 1988 Manitoba
- Forest Fires 1987 Manitoba
- Forest Fires 1986 Manitoba
- Forest Fires 1985 Manitoba
- Forest Fires 1984 Manitoba
- Forest Fires 1983 Manitoba
- Forest Fires 1982 Manitoba
- Forest Fires 1981 Manitoba
- Forest Fires 1980 Manitoba
- Forest Fires 1979 Manitoba
- Forest Fires 1978 Manitoba
- Forest Fires 1977 Manitoba
- Forest Fires 1976 Manitoba

- East Side Lake Winnipeg Planning Area Boundary
- First Nation Reserve Lands -2004
- Northern Affairs Community Council (NACC)
- Treaty Land Entitlement Selection Site
- Provincial Park (Not Protected)
- Provincial Park (Protected- No Mining, Logging, Hydro etc...)
- Harbour
- Ferry Landing Location
- Snowmobile Trails
- Ferry Crossing Route
- Provincial Highway
- Rice River Road
- Community / Cottage Road or Access
- Railway
- Winter Road Corridor
- Ice Road Section of Winter Road
- Transmission line
- Forest Management License Area (FML-1)
- Integrated Wood Supply Area (IWSA-1)
- Forest Management Unit