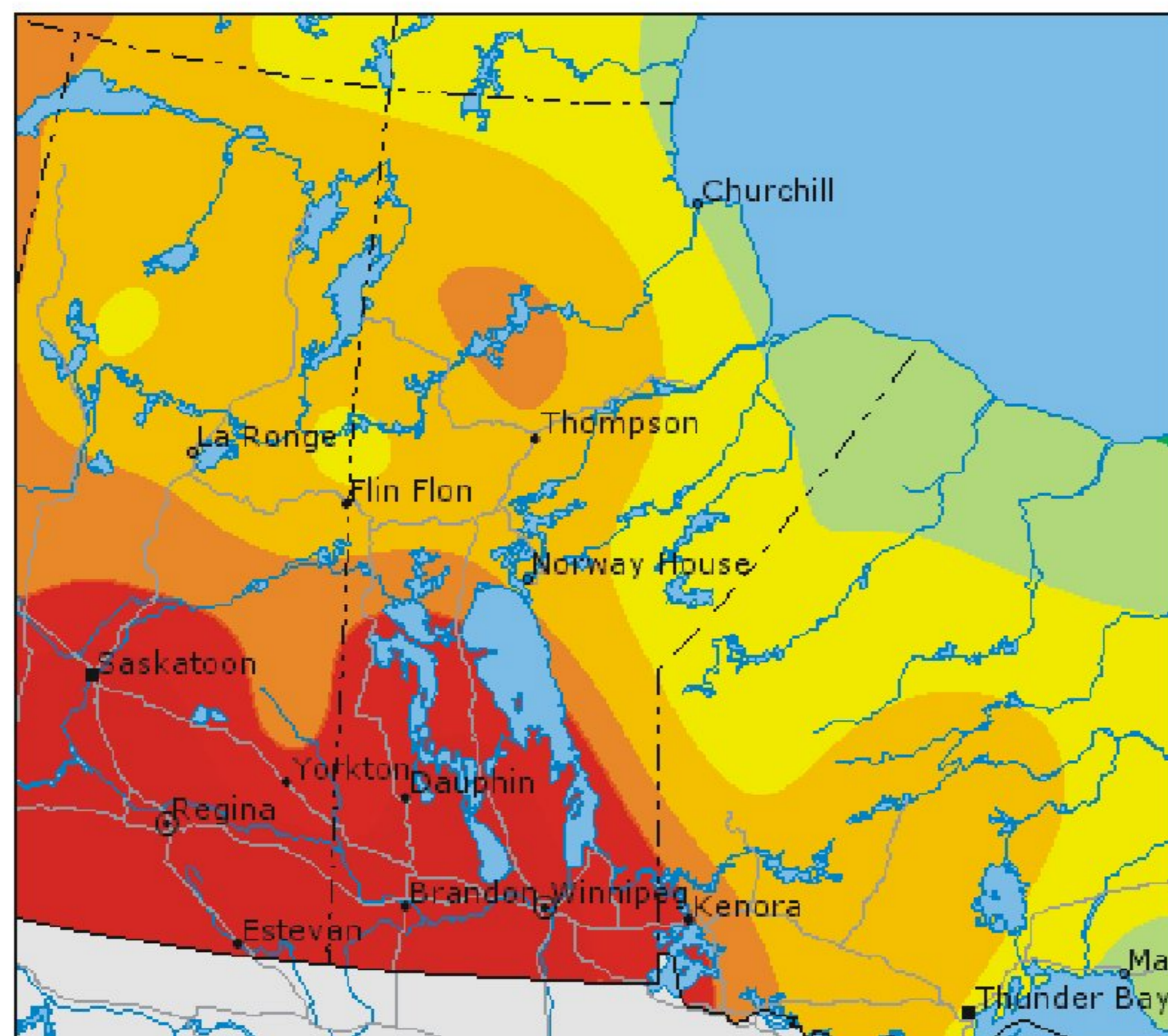
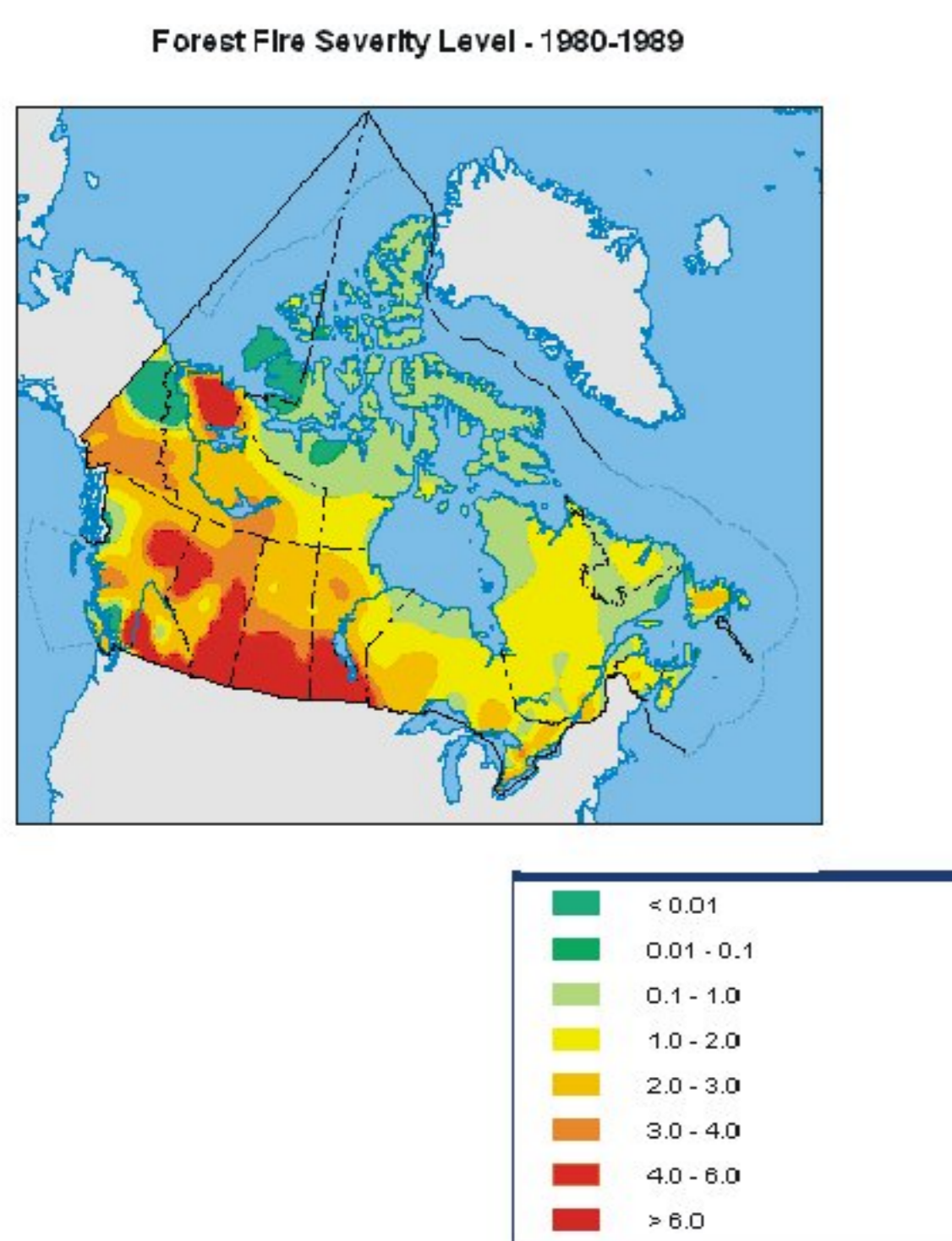
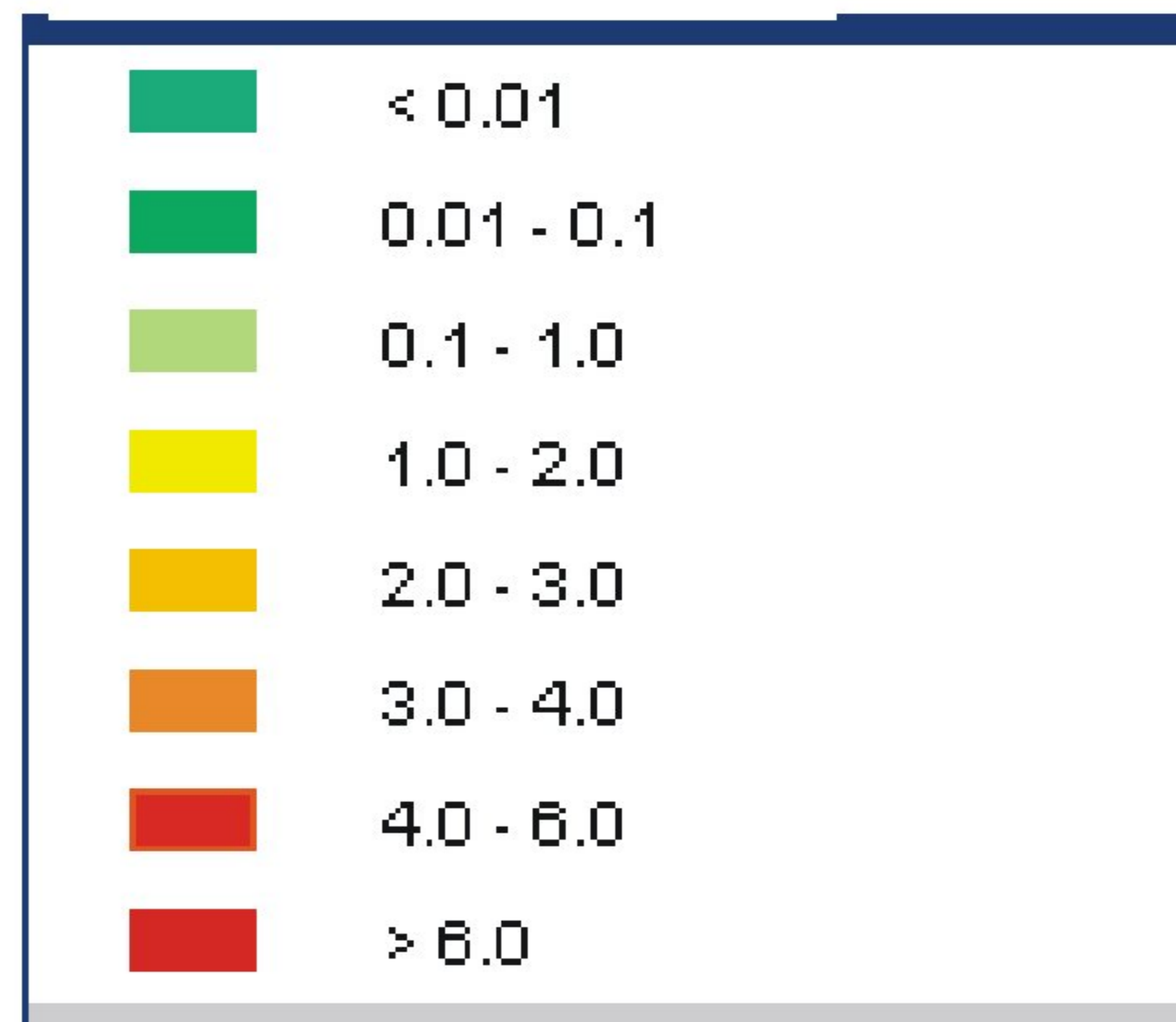


Anticipated Effects of Climate Change on Forest Fire Severity: 2x & 3x CO2

Forest Fire Severity Level - 1980-1989

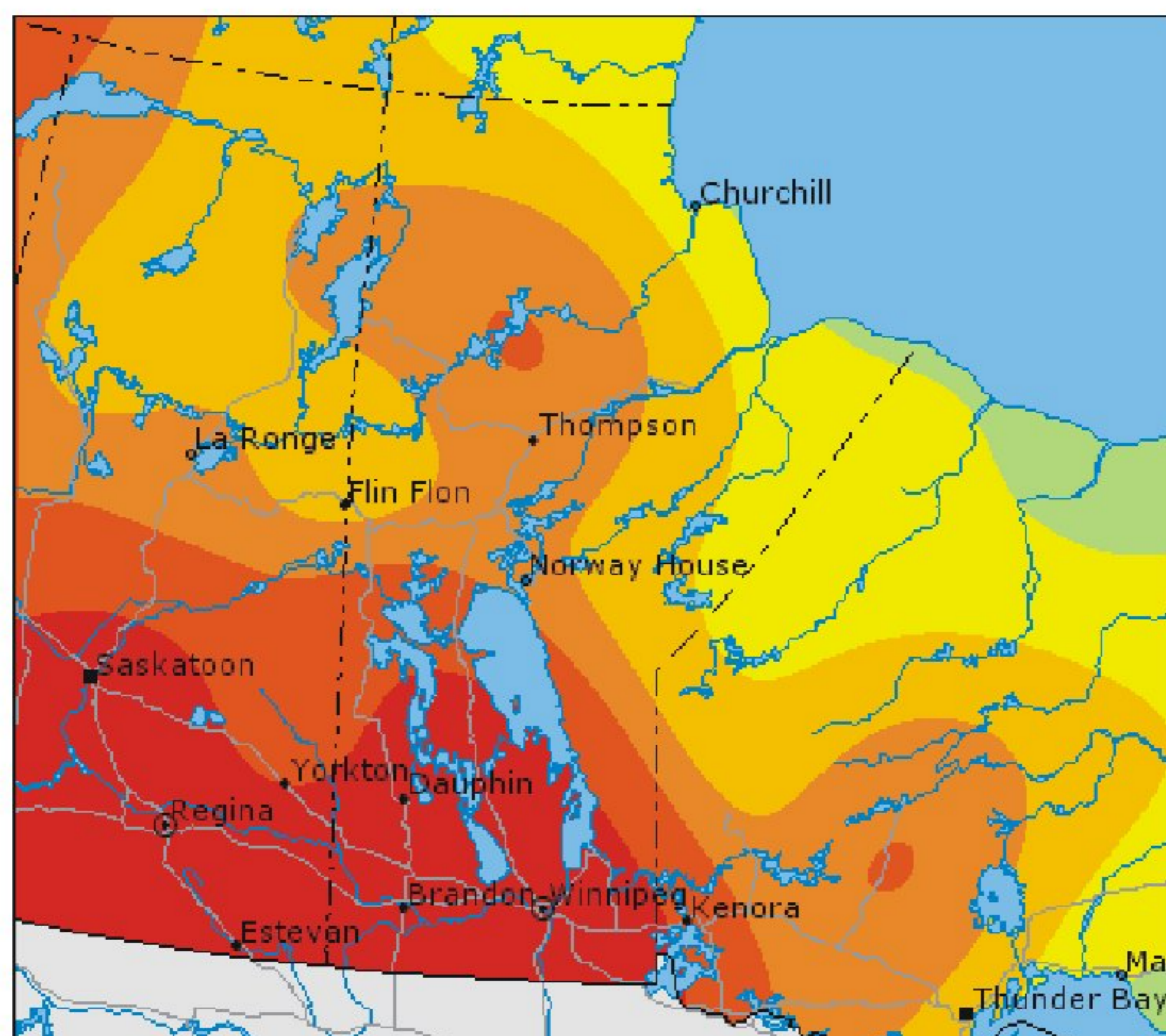
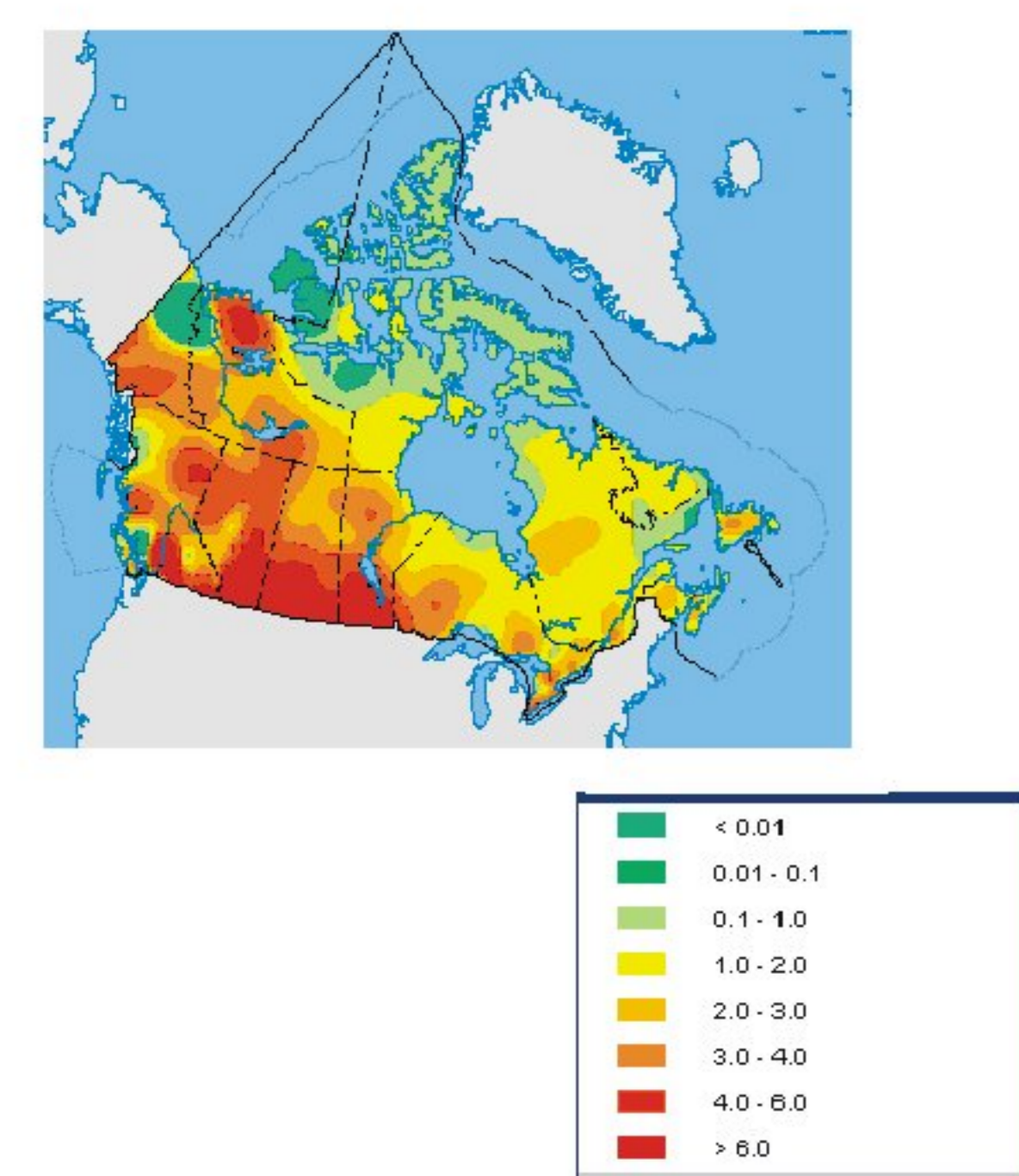


SEASONAL SEVERITY INDEX



The Seasonal Severity Rating (SSR) is a measure of fire danger conditions over a complete fire season. The SSR is developed by averaging daily values over the season. The scale shown is relative with values above 6 being extreme. A real value of zero is only possible in remote cold regions where no fire danger exists in the summer months.

Projected Forest Fire Severity Level - 2050-2059



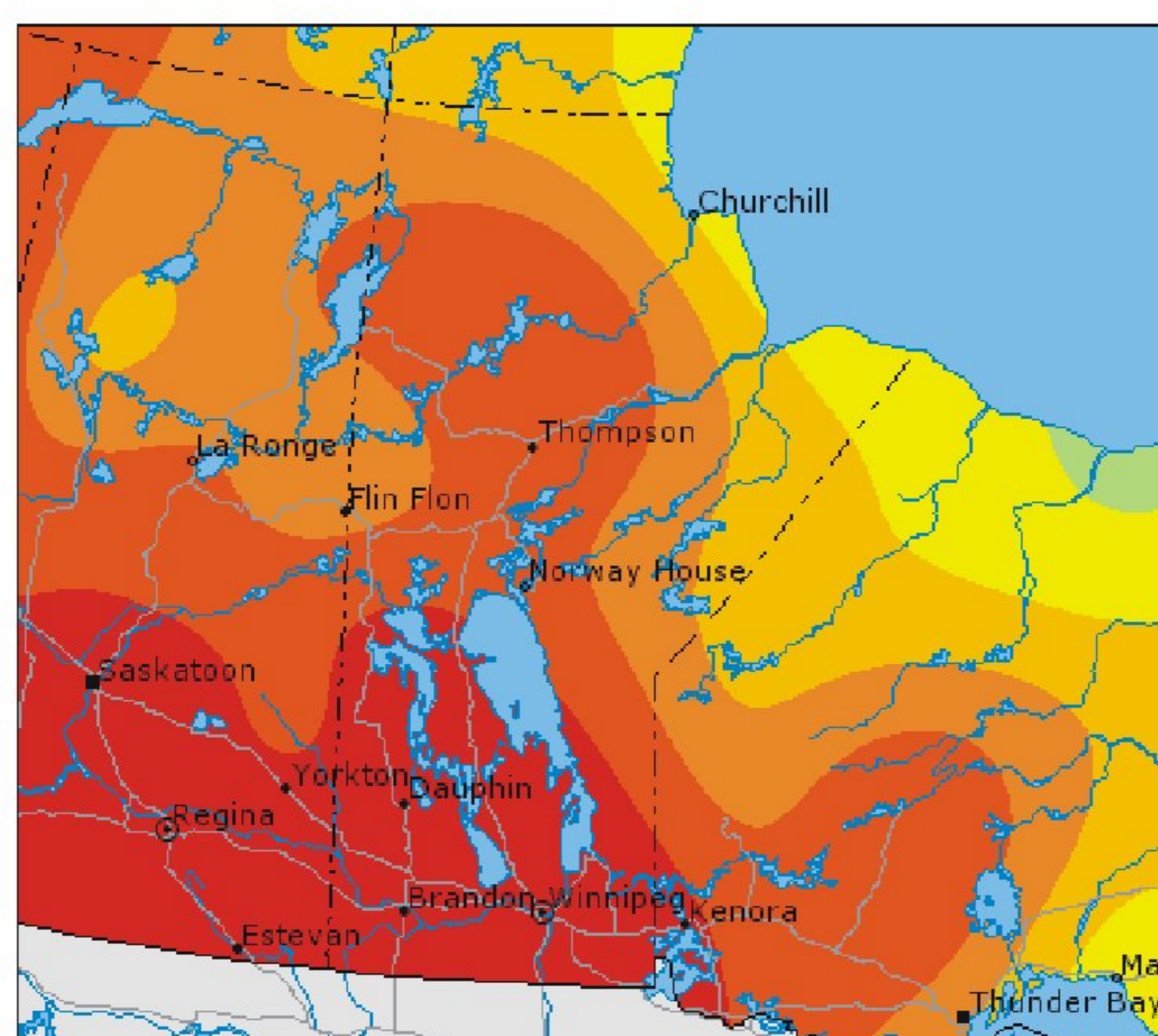
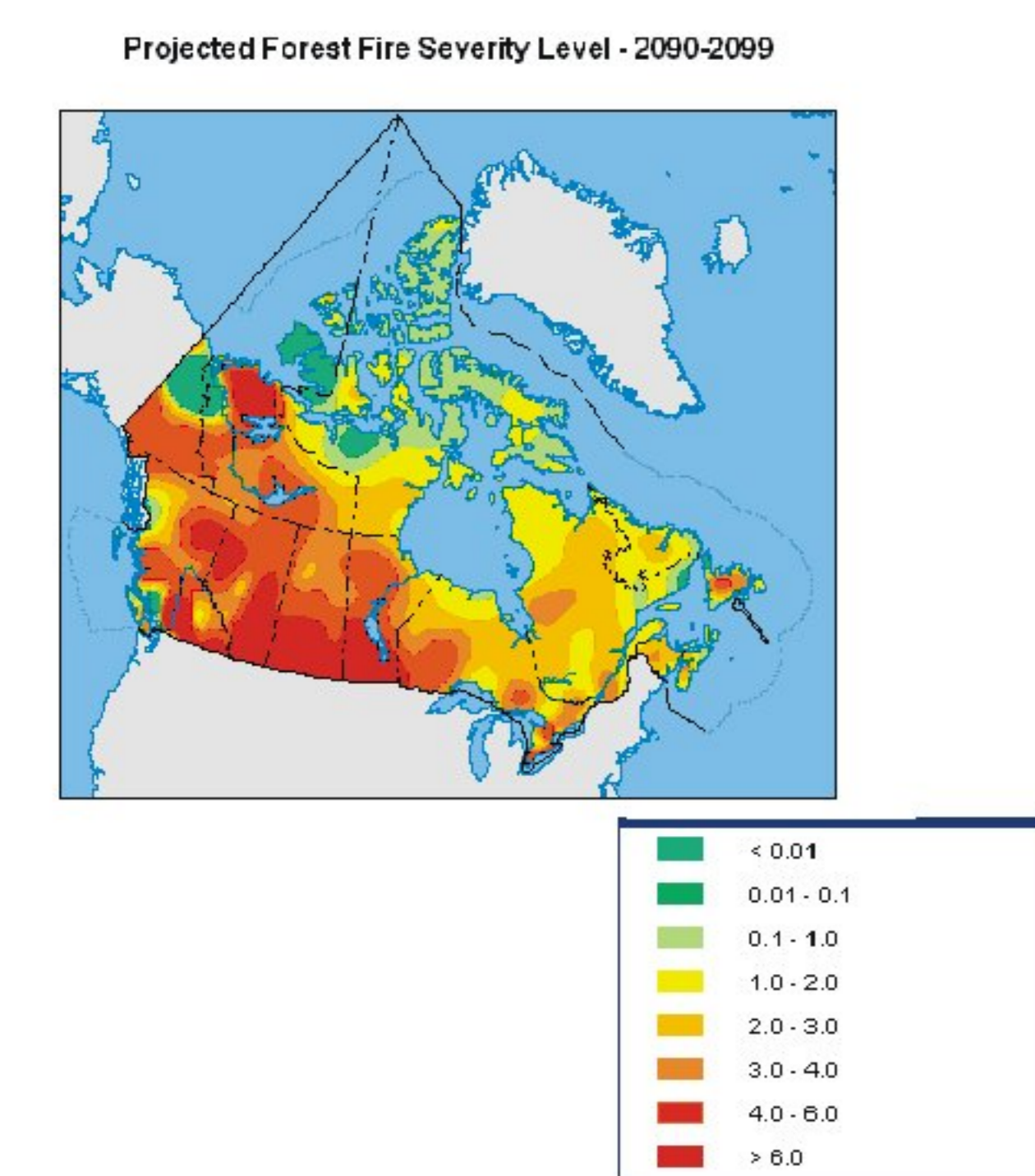
Projected climate changes are expected to have major impacts on the severity of Canada's forest fires. Research activities are being conducted in the Canadian Forest Service, to project how the seasonal severity of forest fires may respond to a changing climate.

Three map layers have been produced to show the seasonal severity ratings with the reference level of atmospheric CO₂ concentration (1980-1989), with a doubling of atmospheric CO₂ concentration (mid century: 2050-2059), and with a tripling of atmospheric CO₂ concentrations (end of century: 2090-2099).

These map layers were created based on a climate change scenario projection using the Canadian Coupled Global Circulation Model 2 (CGCM2), and solid relationships between climate, weather, and the major drivers of fire activity.

The climate change scenario was provided by the Canadian Center for Climate Modeling and Analysis of Environment Canada.

Projected Forest Fire Severity Level - 2090-2099



Data Source: