

EAST SIDE PLANNING INITIATIVE

Community Profiles & Infrastructure

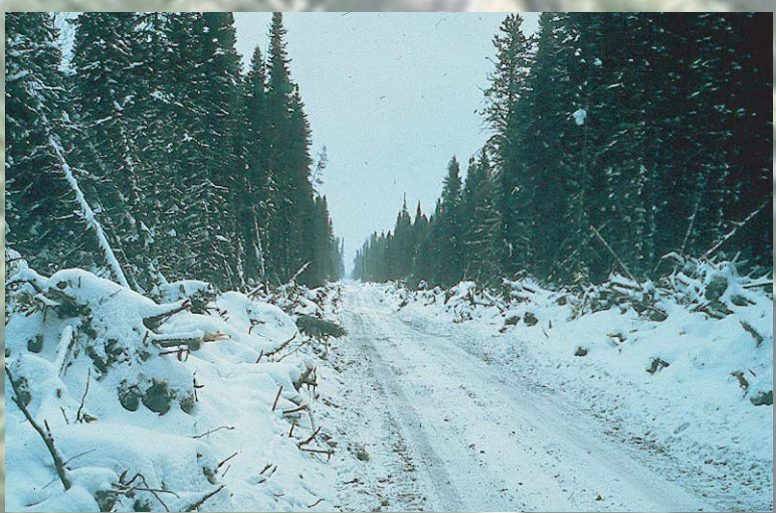


Communities on the east side of Lake Winnipeg have made it clear that they care about sustaining the environment and, at the same time, attracting new community development opportunities to improve the quality of life for their people.

On the east side of Lake Winnipeg there is an increasing population of young people and a relative lack of economic opportunities for youth. Future decisions on the east side must include benefits and opportunities that will encourage youth to stay and work in their communities.

Many communities understand that Climate Change will have an impact on the Boreal Forest and on the network of winter roads. These impacts must be taken into consideration in future planning in order to sustain the forest and also to ensure safe and affordable transportation in the future.

A First Nations Council and Elders group is involved in all aspects of the planning process. This is in recognition that approximately 96% of the population are First Nation peoples and to ensure that First Nations are involved in future decisions.



**First Nation Communities

Bunibonbee Cree Nation
pop. on reserve: 1,859
pop. off reserve: 292
area: 12,049 acres (4,876 ha)
School: Oxford House School - K4-6 (366 students)
1972 Memorial High School - Grade 7-54 (194 students)
Off Reserve Students: 1
Health Services: Oxford House Nursing Station
Transportation: Winter Road via Cross Lake
2,500' gravel airstrip
Dock facilities
Economic Base: Trapping, fishing, some commercial businesses, fuel wood

Manto Sipi Cree Nation
pop. on reserve: 517
pop. off reserve: 71
area: 351 acres (154 ha)
School: Amos Okernow Memorial School - K4-S2 (193 students)
Off Reserve Students: 5
Health Services: God's River Nursing Station
Transportation: Winter Road via Cross Lake
3,450' gravel airstrip
Dock facilities
Economic Base: Commercial fishing, hunting and trapping

God's Lake First Nation
pop. on reserve: 1,240
pop. off reserve: 836
area: 9,133 acres (3,696 ha)
School: God's Lake First Nation School - K4-8 (321 students)
Off Reserve Students: 133
Health Services: God's Lake Narrows Nursing Station
Transportation: Winter Road via Cross Lake
3.9km of community road
3,450' gravel airstrip
Dock facilities
Water Taxi Service
Snowmobile Taxi Service
Economic Base: Fishing, hunting, trapping, tourist guides, and commercial business

Red Sucker Lake First Nation
pop. on reserve: 707
pop. off reserve: 45
area: 624 acres (253 ha)
School: Red Sucker Lake School - K4-S4 (209 students)
Off Reserve Students: 33
Health Services: Red Sucker Lake Nursing Station
Transportation: Winter Road via Garden Hill
3,000' gravel airstrip
Economic Base: Commercial fishing, trapping, and some commercial business

Garden Hill First Nation
pop. on reserve: 2980
pop. off reserve: 297
area: 5 Reserve areas totaling 40,413 acres (16,354 ha)
School: Garden Hill Elementary School - K4-8 (327 students)
Garden Hill First Nation High School - S1-S4 (n/a)
Off Reserve Students: n/a
Total number of students: 969
Health Services: Garden Hill Nursing Station
Transportation: Winter Road via Bloodvein
21.7km of community roads
3,500' gravel airstrip at Stevenson Island NACC
Dock facilities
Economic Base: Commercial Fishing, trapping, and commercial business

Wasagamack First Nation
pop. on reserve: 1,241
pop. off reserve: 107
area: 3 Reserve areas totaling 20,591 acres (8,333 ha)
School: George Knott School - K4-S4 (459 students)
Off Reserve Students: 6
Health Services: Wasagamack Nursing Station
Transportation: Winter Road via St. Theresa Point
20.3km of community roads
4,000' gravel airstrip at Stevenson Island NACC
Dock facilities
Economic Base: Commercial Fishing, trapping, and commercial business

St. Theresa Point First Nation
pop. on reserve: 2,636
pop. off reserve: 176
area: 3 Reserve areas totaling 14,054 acres (5,687 ha)
School: St. Theresa Point School - K4-S4 (583 students)
Off Reserve Students: 81
Health Services: St. Theresa Point Nursing Station
Transportation: Winter Road via Bloodvein
11.3km of community roads
3,500' gravel airstrip
Dock facilities
Water Taxi Service
Economic Base: Commercial business

Norway House Cree Nation
pop. on reserve: 4,085
pop. off reserve: 1,484
area: 3 Reserve areas totaling 19,642 acres (7,949ha)
School: Jack River School - K4-8 (542 students)
Rossville Elementary School - K4-8 (505)
Norway House High School - S1-S4 (360)
Health Services: Norway House Hospital
Pinow Wach Inc. Personal Care Home
Transportation: All weather Road (PR 373)
paved community roads
4.0km gravel community road
Ferry Service (Sea Falls Crossing)
4,000' gravel airstrip
Dock facilities
Taxi Service
Economic Base: Fishing, trapping, hunting, lodging and commercial business

Poplar River First Nation
pop. on reserve: 919
pop. off reserve: 223
area: 3,930 acres (1,538ha)
School: Poplar River School - K4-S1 (216 students)
Off Reserve students: 109
Health Services: Poplar River Nursing Station
Transportation: Winter Road via Berens River
21km gravel community road
2,500' gravel airstrip
Dock facilities
Barge facilities (Lake Winnipeg)
Economic Base: Fishing, trapping, some commercial business

Pauningassí First Nation
pop. on reserve: 484
pop. off reserve: 30
area: 644 acres (261ha)
School: Pauningassí School - K4-S1 (142 students)
Off Reserve students: 431
Health Services: Pauningassí Nursing Station
Transportation: Winter Road via Bloodvein
4.0 km gravel community road
3,000' gravel airstrip at Little Grand Rapids (24km south)
Health Services
Economic Base: Fishing, trapping, seasonal rice harvesting and some commercial business

**First Nation Community Profiles 2001-2002
*Manitoba Aboriginal & Northern Affairs Community Profiles 2001

Little Grand Rapids First Nation
pop. on reserve: 911
pop. off reserve: 344
area: 4,856 acres (2,006ha)
School: Little Grand Rapids School - K4-S4 (253 students)
Off Reserve students: 320
Health Services: Little Grand Rapids Nursing Station
Transportation: Winter Road via Bloodvein
9.0 km gravel community road
3,000' gravel airstrip
Health Services
Economic Base: Fishing, trapping, seasonal rice harvesting and some commercial business

Berens River First Nation
pop. on reserve: 1,072
pop. off reserve: 1,189
area: 2 Reserve areas totaling: 7,146 acres (2,892ha)
School: Berens River School - K4-S4 (354students)
Off Reserve students: n/a
Health Services: Berens River Nursing Station
Transportation: Winter Road via Bloodvein
km gravel community road n/a
2,900' gravel airstrip
Economic Base: Fishing, trapping, forestry and commercial business

Norway House First Nation
pop. on reserve: 672
pop. off reserve: 601
area: 4,010 acres (1,623ha)
School: Wanipigow School - K4-S4 (810 students)
Off Reserve students: n/a
Health Services: Health Office
Pine Falls Hospital (75km south)
Transportation: All weather road (PR 304)
Daily Barge Service
Ferry/Barge Service (to Pine Dock)
12.0 km gravel community road
Economic Base: Commercial fishing, trapping and some commercial business

Bloodvein First Nation
pop. on reserve: 671
pop. off reserve: 531
area: 4,016 acres (1,625ha)
School: Miskosepp School - K4-S1 (215 students)
Off Reserve students: n/a
Health Services: Bloodvein Nursing Station
Transportation: Winter Road (Rice River Rd) via Manigotagan or ice road
across Lake Winnipeg to Pine Dock
9.0 km gravel community road
3,000' gravel airstrip
Economic Base: Commercial fishing, trapping and some commercial business

Hollow Water First Nation
pop. on reserve: 672
pop. off reserve: 601
area: 4,010 acres (1,623ha)
School: Wanipigow School - K4-S4 (810 students)
Off Reserve students: n/a
Health Services: Health Office
Pine Falls Hospital (75km south)
Transportation: All weather road (PR 304)
Daily Barge Service
Ferry/Barge Service (to Pine Dock)
12.0 km gravel community road
Economic Base: Commercial fishing, trapping and some commercial business

Black River (Little) First Nation
pop. on reserve: 472
pop. off reserve: 307
area: 2,000 acres (809ha)
School: Little Black River School - K4-8 (111 students)
Off Reserve students: n/a
Health Services: Health Office
Pine Falls Hospital (35km south)
Transportation: All weather road (PR 304)
4.0 km paved municipal road
9.0 km gravel community road
Economic Base: Trapping, agricultural development, hunting, wild rice harvesting, commercial fishing and some commercial business

Sagkeeng (Fort Alexander) First Nation
pop. on reserve: 3,017
pop. off reserve: 2,908
area: 21,674 acres (8,771ha)
School: Anicinabe Community School - K4-4 (283 students)
Sagkeeng Consolidated School - K4, K5 & Grades 5-8
Sagkeeng Anicinabe High School - S1-S4 (485 students)
Off Reserve students: 25
Health Services: Fort Alexander Health Center
Pine Falls Hospital
Personal Care Home
Transportation: All weather road (PTH 11 & PR 304)
30.8 km community roads (paved/gravel)
Economic Base: Fishing, trapping, government services and commercial business

*NACC Communities

Oxford House NACC
pop. n/a
area: approx. 32.9 acres (13.3ha)
School: Oxford House School - K4-6
Health Services: Oxford House Nursing Station
Transportation: Winter road via Cross Lake
Economic Base: Trapping, guiding, fuelwood, and some commercial business

Red Sucker Lake NACC
pop. 33 (2 Island communities)
School: Diabrow School
Health Services: Red Sucker Lake Nursing Station
Transportation: Winter road via Bloodvein
3,000' gravel airstrip
Economic Base: Trapping, fishing and some commercial business

God's Lake Narrows NACC
pop. 113
School: Ministic School
Health Services: God's Lake Narrows Nursing Station
Transportation: Winter road via Cross Lake
Economic Base: Trapping, guiding and some commercial business

Island Lake NACC
pop. 59 (7 Island communities)
School: Stevenson Island School
Health Services: Garden Hill First Nation Nursing Station
Transportation: Winter road via Bloodvein
4,000' gravel airstrip (Stevenson Island)
Economic Base: Trapping, hunting, sport fishing, guiding, commercial business

Norway House NACC
pop. 456
School: Jack River School, Norway House School, Rossville School
Health Services: Norway House Hospital
Public/Medical Health Center
All weather road (PR 373)
Ferry Crossing (Sea Falls)
3,922 gravel airstrip
Economic Base: Commercial fishing, trapping, local services (regional center), transportation center, wildrice harvest, and commercial business

Berens River NACC
pop. 42
School: Berens River Consolidated School
Health Services: Berens River First Nation Nursing Station
Transportation: Winter road via Bloodvein
2,900' gravel airstrip
Economic Base: Fishing, trapping, forestry, wildrice harvest, quarry operation, marine

Little Grand Rapids NACC
pop. 10
School: Little Grand Rapids School
Health Services: Little Grand Rapids First Nation Nursing Station
Transportation: Winter road via Bloodvein
2,800' gravel airstrip
Economic Base: some commercial fishing, trapping, wildrice harvesting, sport fishing

Princess Harbour NACC
pop. 10
School: none
Health Services: Gimli Hospital
Transportation: ice road via Pine Dock
Economic Base: Ferry operation/barge service, commercial fishing, some trapping

Loon Straits NACC
pop. 10
School: none
Health Services: Gimli Hospital
Transportation: Winter road (Rice River Road) via Manigotagan
Local (non-licensed) grass airstrip
Economic Base: Commercial fishing, trapping

Matheson Island NACC
pop. 99
School: Matheson Island School
Health Services: Gimli or Arborg Hospital
Transportation: All weather road (PR 234)
3,500' gravel airstrip
Ferry Service (2)
Economic Base: Commercial fishing, local services, some commercial business, trapping, marine operations, some saw-logging

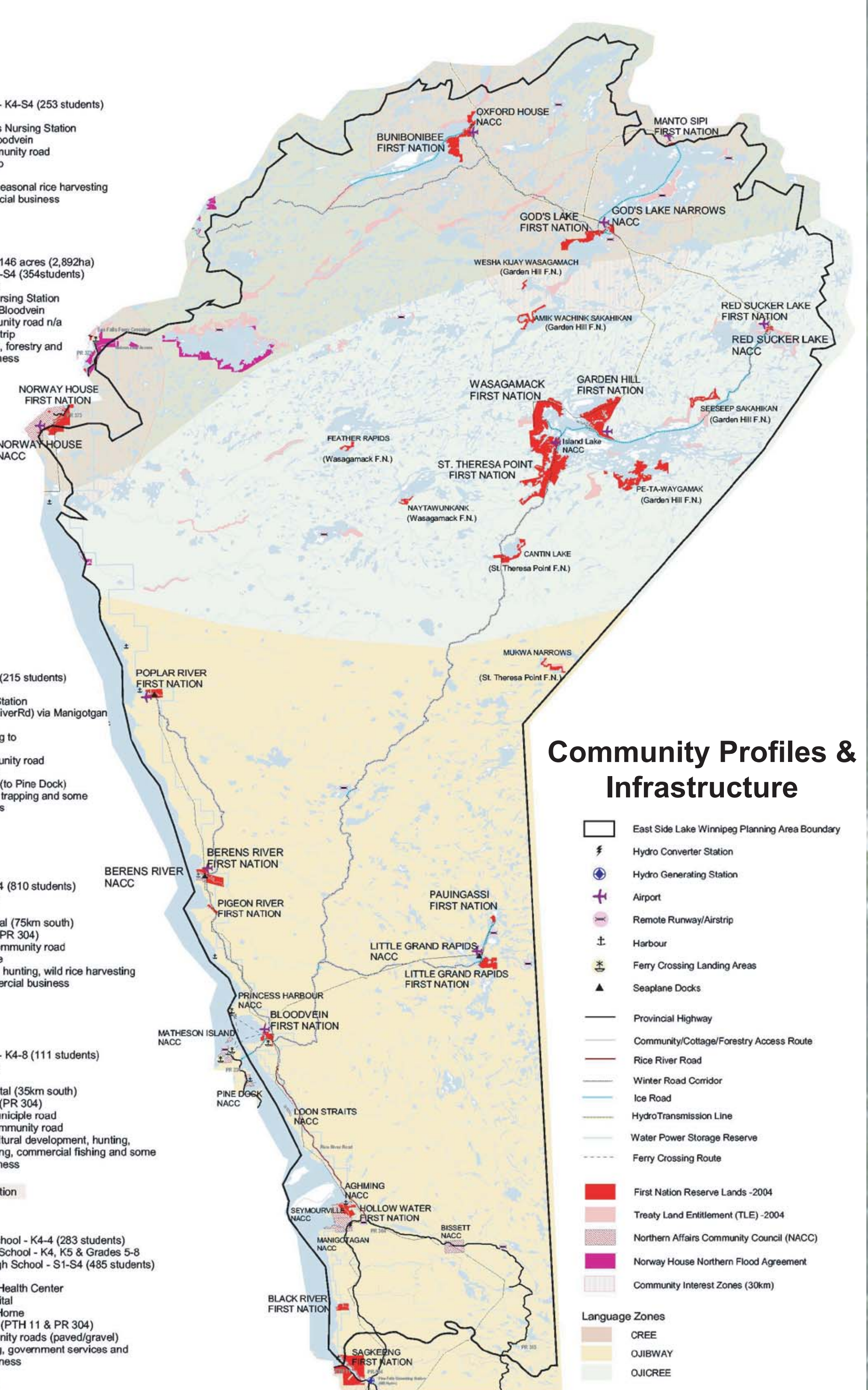
Pine Dock NACC
pop. 108
School: Pine Dock School
Health Services: Gimli or Arborg Hospital
Transportation: All weather road (PR 234)
Economic Base: Commercial fishing, trapping, local services, some commercial business, some pulpwood harvesting

Bissett NACC
pop. 243
School: San Antonio School
Health Services: Pine Falls Hospital
Transportation: All weather road (PR 304 & PR 315)
Economic Base: Forestry, trapping, mining, wildrice harvesting local services, commercial business, tourist/recreation

Aghming NACC
pop. 10
School: Wanipigow School
Health Services: Pine Falls Hospital
Transportation: All weather road (PR 304)
Economic Base: Fishing, hunting, trapping, and pulpwood logging

Seymourville NACC
pop. 135
School: Wanipigow School
Health Services: Pine Falls Hospital
Transportation: All weather road (PR 304)
Economic Base: Fishing, trapping, logging, wild rice harvesting, limited tourism, undeveloped mining potential

Manigotagan NACC
pop. 192
School: Wanipigow School
Health Services: Pine Falls Hospital
Transportation: All weather road (PR 304)
Economic Base: Forestry, commercial fishing, trapping, hunting, wildrice harvesting, tourism, local services and some commercial business



Community Profiles & Infrastructure

- East Side Lake Winnipeg Planning Area Boundary
- Hydro Converter Station
- Hydro Generating Station
- Airport
- Remote Highway/Airstrip
- Harbour
- Ferry Crossing Landing Areas
- Seaplane Docks
- Provincial Highway
- Community/Cottage/Forestry Access Route
- Rice River Road
- Winter Road Corridor
- Ice Road
- Hydro Transmission Line
- Water Power Storage Reserve
- Ferry Crossing Route
- First Nation Reserve Lands - 2004
- Treaty Land Entitlement (TLE) - 2004
- Northern Affairs Community Council (NACC)
- Norway House Northern Flood Agreement
- Community Interest Zones (30km)
- Language Zones
- CREE
- OJIBWAY
- OJICREE