

“Ganawenjigaadeg Ashodamaagewin...”

Ji-gagwe-onachigaageng Waabanong Nakeya’ii Winnipeg Zaaga’iganiing

Giizhaakonigeng Ekidong

Cover page

“Ganawenjigaadeg Ashodamaagewin...”

Ji-gagwe-onachigaageng Waabanong Nakeya’ii Winnipeg Zaaga’iganiing

Aaniin ge-izhisegiban omaa gaa-ateg mazina’iganing

Omaa gaa-ateg mazina’iganing daabishkoo wegonen wezhibii’igaadeg, wegonen gaa-ganawaabanjigaadegin zhigwa gaye aaniin ge-izhichigengiban da-miinaa Manitoba Gichi-ogimaa ji-mino-wiidanokiindiwaad. Onandawendaanaawaa’ Manitoba Gichi-ogimaag zhigwa bebakaan Anishinaabeg omaa Manitoba nawaj ji-mino-wiidanokiindiwaapan mino-ganawaabandiwaad zhigwa mino-wiidookaadiwaad. Gaawiin gegoo omaa mazina’iganing da-migoshkaajichigemagasinoon onashowewinan etegin agwi’idiwining gaagii-onatoowaad Anishinaabeg zhigwa Gichi-ogimaa. Gichi-ogimaag omaa Manitoba gaagii-onatoowaad owe onashowewin “East Side Planning Initiative” gaa-izhinikaadeg, gaawiin gegoo omaa gaye mazina’iganing da-migoshkaajitoosiinan onashowewinan omaa gaa-ategin mazina’iganing.

“Ganawenjigaadeg Ashodamaagewin...”

Ji-gagwe-onachigaageng Zhaawanong Nakeya’ii Winnipeg Zaaga’iganiing

Nenaakomindwaa:

**Niigaan ge-ani-ayaawaad awiyag
zhaawanong nakeya’ii Winnipeg Zaaga’iganiing
zhigwa aki ge-ani-ondaadiziwaad**

¹Ishkwaaj bezhig ozhibii'igan Robert Frost gaagii-ozhibii'amangoban "Stopping By Woods On A Snowy Evening" gii-aabajichigaade ji-wiindeg owe mazina'igan

Noopimiing wenizhishing, makadewaa, gipagaakwa
Ashodamaagewinan ji-ganawendamaan
Waasa ji-izhaayaan jibwaa nibaayaan
Waasa ji-izhaayaan jibwaa nibaayaan

Letter of Transmittal
Maajiinizha'igaadeg Mazina'igan

Miziwekamig Izhichigewin
Room 405-326 Broadway
Winnipeg, Manitoba R3C 0S5
204-945-8114 or 1-800-214-6497
204-948-2948 Fax

espl@gov.mb.ca

Broad Area Planning
Gegwe-onachigeng

September 2004

Wegimaakaaniwid Stan Struthers
Wegimaakaadang Naagajitood Aki
Manidoobaa Gichi-ogimaakaan
Biindig 330 Ogimaakaanigamig
450 Broadway
Winnipeg, MB R3C 0V8

Ogimaakaan Struthers:

Niinawind gaa-niigaanishkamaang Waabanong Onachigewin zhigwa Anishinaabe Odaginzoog, gimiinigoo owe mazina'igan aaniin megwaa ezhichigeng owe onashowewin "Ganawenjigaadeg Ashodamaagewin...". Ji-minosemagak giin onji, zhigwa ji-wendag ji-maada'ookiiyan giwii-miinigoo bakaan ozhibii'igaadeg oniigaanii-inashowewin.

Owe mazina'igan gaa-miinigooyan, ji-gikendaman aapiji ningii-gichi-anokiimin ji-mino-wiisookawangidwaa gechiwaag imaa gaa-ayaawaad zhaawanong nakeya'ii zaaga'iganiing. Memindage aaniin megwaa endanaabadak imaa nakeya'ii zhigwa aaniin ge-ani-izhi-aabadak.

Giga-waabandaan mazina'iganing niibowa gii-zagaswe'idiwag Gichi-ogimaa (Northern Affairs) zhigwa Wiisaakodewininiwag (Metis) zhigwa miinawaa Anishinaabeg dago gechiwaag imaa gaa-ayaawaad nakeya'ii. Gegaa gakina imaa gaa-ayaawaad igaye anishinaabewiwag. Niinawind idash maawaj gaa-niigaaniyaang omaa izhichigewining gaagii-gagwejimindwaa gechiwaag imaa gaa-ayaawaad ji-izhichigengiban (Consultation on

Sustainable Development Implementation), mii owe mazina'igan giga-wiindamaagom Gichi-ogimaa omaa Manitoba gegwe-gwayakochiged. Mii owe gagwe-minochige gechiwaag imaa gaa-daanid zhaawanong nakeya'ii zaaga'iganiing ji-wiidabingewaad zagaswe'iding onashoweng aaniin ji-ani-ayizhichigeng. Ningiigidootamawaanaanig ikidoyaang ninayendaamin gidoogimaakaanimiwaag maajitoowaad 'owe.

Gaawin mashi giizhichigaadesinon iwe Zhaawanong Nakeya'ii Izhichigewin ezhinikaadeg. Zhaagoj idash wiin gagaana gii-giizhichigem aanagii dibach bezhigwewig nishwaaching enigokwaag Manitoba iwe aki inigokwaa gaagii-ganawaabandamaang. Geget wiin owe mazina'igan giga-wiindamaagon aaniin minik gaa-giizhichigeyaang, geyaabi niibowa anokiiwin ji-dazhiikamaang ji-naagajitooyaang owe aki zhigwa gaye onatooyaang ani-niigaan ji-minosemagak naagajichigaadeg dago ondaadizing imaa onji.

Nindinendaamin iniwen gaagii-ganawaabandamaang zhigwa gaagii-wiindamaagoyaang ji-izhichigaadamaang imaa nakeya'ii giga-gikendaan aaniin minik gaa-giizhitooyaang. Ningagwejjimaanaanig Manitoba gichi-ogimaag ji-wiidanokiiminangidwaa minik ji-giizhanokiiitamaang. Iwe onashowewi-mazina'igan "Memorandum of Understanding" gaa-izhinikaadeg "Gigiizhaakonigewininaan", Anishinaabeg gaagii-miinindwaaban zhigwa miinawaa bezhig gaagii-ashodamawindwaa Wiisaakodewininiwag imaa gaa-ayaawaad. Zhigwa miinawaa gaagii-gaganonindwaaban giwedionong gaa-ayaawaad zhigwa bebiichigaadeg onashowewinan zhaawanong nakeya'ii zaaga'iganiing gaa-ayaawaad Anishinaabeg aapji da-minose okwiichigaadeg aaniin ji-izhichigengiban onachigaadeg iwe izhichigewin.

Ono nitam wiindamaagewinan omaa etegin mazina'iganiing, zhaawanong nakeya'ii zaaga'iganiing gechiwaag imaa gaa-ayaawaad gii-onjise magadoon. Igiwe gaa-niigaanishkamowaad iwe izhichigewin zhigwa Anishinaabe Odaginzoog zhigwa Zegakibii'igewaad ogii-ozhibii'aanaawaan ono wiindamaagewinan. Ningechinaawendaamin ninga-giizhitoomin owe anokiiwin ji-onatooyaang ji-naagajichigaadeg zhaawanong nakeya'ii zaaga'iganiing aki niigaan gakina awiya ji-mino-izhiwebizid.

Ninandawendaamin ji-ganawaabandaman owe anokiiwin, gigagwejjimigoom ji-wiidookaageyeg aanikenameg aandi imaa ji-izhaamagakipan.

Aweneniwiyaan,

Chief Phil Fontaine
Chair
East Side Planning Initiative

Elder Ed Wood
Associate Chair
East Side Planning Initiative

Acknowledgments
Nenaakomindwaa

September 2004

Ogimaakaan Stan Struthers
Wegimaakaadang Naagajitood Aki
Manitoba Gichi-ogimaa
Biindig 330 Ogimaakaanigamig
450 Broadway
Winnipeg, MB R3C 0V8

Ogimaakaan Struthers

Gaagii-dazhiikigaadeg owe mazina'igan "Promises to Keep" ezhinikaadeg. zhigwa miinawaa Giizhaakonigeng ekidong gaa-dagosing imaa, inenjigaade ji-minosemagak onachigaadeg iwe Zhaawanong Nakeya'ii miziwekamig izhichigewin, memindage gaagii-inashoweng imaa "Consultation on Sustainable Development" mazina'iganing. Mii iwe gichi-ogimaa gaagii-odaapinang inashowewin. Igiwe gaa-niigaanishkamowaad iwe "Zhaawanong Nakeya'ii Onachigewin izhichigewin aazha ogii-maadanaakaadaanaawaa' babaa-gagwedwewaad aaniin ge-izhichigengiban.

Aaniin megwaa enashoweng, wegonenan gaa-ganawaabanjigaadegin aaniin igaye ji-izhichigengiban, miziwe imaa gaa-ayaawaad nanaakomaawag wiidookaagewaad zagaswe'iding. Owe mazina'igan idash onanaakomaa' iniwe gaagii-wiiji'iwewaad.

Igiwe Gaa-niigaanishkamowaad zhigwa Anishinaabeg gaa-wiidookaagewaad gii-mino-wiidanokiindiwig. Ginwezh ogii-babizindawaawaa' gaagiigidonid awiya'. Bizinjigewaad, ganawaabandamowaad zagakibii'igewinan zhigwa dazhindamowaad wegonen imaa ge-atoowaad mazina'iganing. Ogii-gashkitoonaawaa' owe ji-izhichigewaad abooshke bebakaan gegoonan gii-dazhinjigaadegin zagaswe'iding. Nanaakomaawag igaye igiwe gaagii-zagakibii'amowaad aaniin gaa-ikidong apii zagaswe'iding.

Phil Fontaine gaye nanaakomaa gaagii-wiiji'iwed niigaanabid zegaswe'idiwaad gaa-niigaanishkamowaad zhigwa Anishinaabewi-ogimaakaanag abooshke apii miinawaa niigaanishkang Gichi-ogimaakaanag Anishinaabe'. Zhigwa miinawaa Ed Wood gaagii-gichi-anokiid andonged zagaswe'iding, gewiin wiiji'iwed maamiinwatoowaad owe izhichigewin.

Zhigwa miinawaa nimiigwechiwi'aanaanig gaa-niigaaniiwaad ishkonganing, gichi-anishinaabeg zhigwa igiwe gaagii-wiiji'iwewaad anokaajigaadeg owe izhichigewin. Igiwe miinawaa gaagii-bi-wiidookaagewaad ji-andongeng apii zagaswe'iding. Miinawaa igiwe oshki-aya'aag gaagii-bi-wiidabingewaad, nimbagosendaamin iwe giizhashowe mazina'igan ji-zaaga'amoomagak ani-dagwaagig. Zhigwa miinawaa nimiigwechiwi'aanaanig Ogimaakaanag Gaa-naagajitowaad Aki zhigwa Gichi-ogimaa gaagii-wiiji'angidwaa.

Zhigwa ishkwaaj, miigwech nindinaag igiwe ogimaakaanag zhigwa gaa-niigaanishkamowaad owe anokiwin gaagii-wiiji'angidwaa. Gii-gichi-anokiwwag maamawinamowaad zhigwa zagakibii'amowaad owe izhichigewin ji-giizhitoowaad giizhaakonigebii'igan. Gakina ningiigidootamawaag gaa-niigaanishkamowaad owe izhichigewin zhigwa Anishinaabewi-ogimaakaanag miigwech inagwaa igiwe gaagii-bi-wiiji'angidwaa ji-giizhibii'amaang owe mazina'igan.

Giishin awiyag wiidookaagesiwaapan, gaawiin Anishinaabewi-ogimaakaanag zhigwa Gaa-niigaanishkamowaad odaagii-gashkitoosiinaawaa' ji-minobii'amowaapan owe mazina'igan "Promises to Keep." Iwe gaagii-izhinikaadamaang mazina'igan, gaawiin mashi ningiizhakamigizisiimin anokaadamaang owe Miziwekamig Izhichigewin zhigwa Zhaawanong Nakeya'ii Zaaga'iganiing Onachigewin dago gaye aaniin ji-ani-inashoweng. Nimbagosendaamin Gichi-ogimaawin Manitoba oga-ani-giizhitoonaawaan ono izhichigewinan.

Peter Andre Globensky
Niigaaniitang Anokiiwin
Zhaawanong Nakeya'ii Izhichigewin

“Ganawenjigaadeg Ashodamaagewin...”

Ji-gagwe-onachigaageng Waabanong Nakeya’ii Winnipeg Zaaga’iganiing

1. Omaa Wezhibii’igaadegin

Maajiinizha’igaadeg Mazina’igan.....5
Nenaakomindwaa.....7

1. Omaa Wezhibii’igaadegin.....9
2. Giizhaakonigebii’igewin.....11
3. Miziwekamig Izhichigewin: Getenjigaadeg zhigwa Gegwe-izhichigeng.....15
4. Waabanong Zaaga’iganiing Onachigewin.....17

5. Aaniin Enendaming zhigwa Aaniin ge-izhichigengiban
5.1 Bizaanigo Anokaadan: Geyaabi anokaadeg onachigaadeg Waabanong
Izhichigewin aaniin igaye ji-izhichigengiban – Eshkwaa onashoweng.....23
5.2 Ji-mino-wiidanokiimindwaa Anishinaabeg:
Inaakonigewinan Giizhaakonigeng.....29
5.3 Aaniin gegwe-izhichigeng Ji-migoshkaajichigaadesinog Bagwadakamig...31

6. Nitam Ji-ganawaabanjigaadeg Aaniin igaye Ji-izhichigengiban
6.1 Wiidanokiindiwin: Zagakibii’igaadeg Aaniin Ekidong aaniin ji-izhichigeng...37
6.2 Anishinaabeg Ji-ondiziwaapan.....38
6.3 Noopimiing Wendizing Ji-ganawaabanjigaadeg.....40
6.4 Bimiwewin Ji-ganawaabanjigaadeg.....43
6.5 Mawadishiwewin zhigwa Maminwaagaajichigewin.....46
6.6 Waasigan Ge-inaabiiginigaadeg.....48
6.7 Biiwaabikokeng.....51
6.8 Aanind miinawaa Gegoon Ji-ganawaabanjigaadegin.....53

7. Giizhendamowin
Niigaan Miikana: Ge-zanagakin zhigwa Ge-minoseginiban.....55

8. Aanikebii’igan
8.1 Zhaawanong Onachigewin: Gaa-niigaanabiwaad, Anishinaabe Ogimaakaanag, Gaa-
niigaaniitamowaad Izhichigewin, Gichi-ogimaag Genawaabandamowaad Izhichigewin, Gaa-
wiidookaagewaad zhigwa Gichi-ogimaa Giigidoowininiwag.....57
8.2 Aanikebii’iganan Ozhibii’igaadegin zhigwa Ge-mikamamban.....59

Ikidowinan.....61

Akii-mazina’iganan zhigwa Aginjiganan
Ishkoniganan zhigwa Oodenawan Eyaamagakin.....13
Aaniin Awiyyag Ezhi-wiidookaagewaad.....21

(If table of contents needs to be continued as per booklet, this says: Table of Contents (cont’d)

1. Omaa Wezhibii’igaadegin (aanikesin)

2. Nitamibii'igewin

Owe Izhichigewin gii-maajise apii gaa-giizhitowaad giizhaakonigewin ogowe "Consultation on Sustainable Development Implementation" gaa-inindwaa aaniin ji-izhichigaadegiban Waabanong Zaaga'iganiing Bagwadakamig. 1997 ogii-maajitoonaawaa' gaa-izhi-giizhibii'amowaad gaa-ziigwang 1999. Nanaandok awiyag gii-dagwiiwag gagwedweng ji-izhichigengiban, mii Manitoba Gichi-ogimaa gaa-izhi-odaapinang October 2000. Gaa-giizhibii'igaadeg, gii-ikidom gaawiin eta bezhigwanong ji-ganawenjigaadeg bagwadakamig, miziwe Manidoobaa-akiing ji-izhichigaadegiban. I' iwe Miziwekamig Izhichigewin gaa-idamowaad, mii owe ji-ganawaabanjigaadeg aaniin ji-izhi-ganawenjigaadeg aki ji-ganandawaag ji-migoshkaajichigaadesinogin gegoon bagwadakamig. Mii dash ani-niigaan giishpin gegoo izhichigeng bagwadakamig, onjida ji-ganawaabanjigaadeg aaniin ge-izhiwebiziwaad gechiwaag imaa gaa-ayaawaad daabishkoo oodenawan, ishkoniganan zhigwa gaa-anokiiwaad imaa.

Zhigwa miinawaa iwe giizhaakonigewin wiindamaagemagad aaniin ji-izhichigengiban imaa izhichigewining. Wiindamaagemagad onjida ji-ganawaabanjigaadeg ji-migoshkaajichigaadesinog gegoo zhigwa gaye ji-gikenjigaadeg aaniin ayezhichigeng. Daabida ji-wiindamaageng aaniin ayezhichigeng zhigwa ji-aabajichigaadeg gechiwaag imaa gaa-ayaawaad wegonen gekendamowaad. Aaniin miinawaa ge-izhi-wiidanokiimindwaaban Anishinaabeg gechiwaag imaa gaa-ayaawaad.

Gaa-niigaanishkamowaad Waabanong Zaaga'iganiing izhichigewin mii owe nitam gegwe-izhichigeng apii gaa-giizhichigaadeg iwe giizhaakonigewin. Zanagan ji-inanokiing, zanagan igaye aaniin ji-ayizhichigeng. Michaamagad imaa nakeya'ii ningoji igo 82,000 sq. kilometers. Bebakaan igaye gegoon awiyag odizhichigaadaanaawaa'. Geget wiin 16 ishkoniganan ayaamagadoon imaa nakeya'ii gewiinawaa bebikish wawondaadiziwaad imaa, geyaabi dash aanind awiyag oganawaabandaanaawaa' iwe bagwadakamig epiichi onizhishing. Aanind miinawaa oganawaabandaanaawaa' iwe aki aaniin ge-izhichigengiban ji-ondaadizingiban imaa onji.

Giizhaakonigewin gii-izhibii'igaadeg giishin gegoo wii-izhichigeng imaa nakeya'ii onjida ji-gagwejimindwaa gechiwaag imaa gaa-ayaawaad aaniin noonde-izhichigeng.

Owe mazina'igan wiindamaagemagad aaniin ayizhichigeng ji-onachigaadeg iwe izhichigewin Waabanong Nakeya'ii Zaaga'iganiing Lake Winnipeg gaa-izhinikaadeg. Gichi-ogimaa ogii-nandawendaan ji-giizhichigaadeg iwe mazina'igan July 2004, gaawiin idash iwapii da-giizhibii'igaadesinoon. Gaa-niigaanabiwaad owe izhichigewin ogii-gichi-anokaadaanaawaa' ji-gikenjigaadeg aaniin noonde-izhichigeng zhigwa aaniin gaa-ikidong ji-izhichigengiban. Niisaya'ii omaa ozhibii'igaadewan. Giishpin idash giizhaakonigesiing aaniin ji-izhichigengiban, miinawaa da-zagaswe'idim gechiwaag imaa gaa-ayaawaad ji-gagwejimindwaa Anishinaabeg igaye imaa gaa-daawaad weweni go ji-gikenjigaadeg aaniin ji-izhichigengiban. Aazha maajise, gaamashi dash giizhichigesiim.

Owe giizhaakonige mazina'igan wiindamaagemagad wegonen imaa wezhibii'igaadeg "Promises to Keep" giizhaakonigebii'iganing. Awenenag gaa-wiiji'iwewaad, wegonen igaye gaa-aabadak ozhibii'igaadewan giizhaakonigebii'iganing. Apii zagakibii'igaadeg, gechiwaag imaa gaa-ayaawaad da-izhinizha'amawaawag. Giizhaakonigeng Ekidong mazina'igan da-miigiwem ozhibii'igaadeg, zhigwa naagadawenjiganaabik onaaganensing, gemaa gaye daa-mikigaade naagadawenjiganaabik ozhibii'igaadeg. Awenenag idash gaa-wiiji'iwewaad zhigwa bakaan gegoon gaa-aabajichigaadegin daa-mikigaadewan imaa Manitoba Public Registry gaa-izhinikaadeg.

Map

East Side Lake Winnipeg Planning Area
Waabanong Zaaga'iganiing Waa-izhichigeng

First Nations & Northern Communities
Ishkoniganan zhigwa Giwedonong Oodenawan

East Side Planning Boundary
Waabanong Izhichigewin Enigokwaag

First Nation Community/Reserve Lands
Anishinaabe Okogamigiziwin/Ishkoniganan

Community Interest Zone
Wendaadizing Akiin

Northern Affairs Community
Gichi-ogimaa Giiwedining Oodena

Northern Flood Agreement
Giiwedining Mooshka'iwewin Onashowewin

Treaty Land Entitlement Selection
Agwi'idiwi-aki Gegiiginigaadeg

God's Lake First Nation
God's Lake Ishkonigan

God's River First Nation
Manito Sipi Ishkonigan

Norway House Cree Nation
Norway House Omashkiigoo Ishkonigan

Oxford House First Nation
Oxford House Ishkonigan

Garden Hill First Nation
Garden Hill Ishkonigan

Red Sucker Lake
Red Sucker Lake Ishkonigan

St. Theresa Point
St. Theresa Point Ishkonigan

Waasagamack First Nation
Wasagamack Ishkonigan

Provincial Road
Manitoba-aking Miikana

Other Road
Bakaan Miikana

Railway
Biiwaabikomiikana

Winter Road Corridor
Bibooniwi-miikana Enamong

Transmission Line Corridor
Waasiganeyaab Enaabiigamong

Airport
Booniimiikana

Waterbody
Niibiin

Lake
Zaaga'igan

River
Ziibi

First Nation Community Census
Anishinaabeg Gikinawaajibiiwindwaa

First Nations Community Profiles 2001 – 02
Anishinaabeg Ishkoniganan Gikinawaajibii'igaadegin 2001 – 02

Northern Community Census
Giiwedining Oodenawan Gikinaawajibii'igaadegin

Northern Community Profiles 1996 Census
Giiwedining Oodenawan Gikinawaajibii'igewin 1996

3. Miziwekamig Izhichigewin: Getenjigaadeg zhigwa Gegwe-izhichigeng

Waabanong Winnipeg Zaaga'iganiing Nakeya'ii aki gaawii-onachigaadeg akiikaan aapiji onizhishin zhigwa gaye aapiji niinamad. Ningoji igo 82,000 diba'iganeyaa (kilometers). 36,000 dashiwag 34 oninamaawinan imaa gaa-ayaawaad zhigwa gegaa igo gakina imaa gaa-ayaawaad 96 daswewig dibach Anishinaabewiwag. Maawaj mechaag bagwadakamig omaa Kaanada-akiing aanikesin ani-niiwing maawaj mechaag bagwadaakwaa omaa ogidakamig. Bigo awiya imaa gaa-ayaad gagwejimad giga-wiindamaag bezhigwewang iwe nakeya'ii. Onjida ji-gwaawaanjichigeng ji-ganawenjigaadeg ji-ani-ondaadizing ani-niigaan.

Giizhaakonigewin gaagii-giizhitoowaad igiwe COSDI gaa-inindwaa, mii iwe gegwe-bimosaadamowaad ogoweg gaa-anokaadamowaad iwe Waabanong Nakeya'ii Zaaga'iganiing Izhichigewin. Mii owe aaniish "Onatoon onashowewin ji-naagajichigaadeg gagaana aki, zhigwa miinawaa nepiimatoon gegoon ge-ondaadizing zhigwa gaye onashowewinan ji-naagajichigaadeg ondaadiziwin omaa Manitoba-akiing.

Ogowe gaa-niigaanishkamowaad owe izhichigewin inendamoo onjida ji-naagajichigaadeg ji-ganawenjigaadeg ji-ganandawaag.

Mii dash owe enashowewaad:

- ❑ Inashowem aaniin ji-gichi-inendaagwak obimaadiziig ji-ondaadiziwaad akiing aaniin igaye gwayak ji-izhi-gaganawenjigaadegiban iwe aki. Zhigwa gaye ji-gikenjigaadeg igiwe imaa gaa-ayaawaad ji-wiiwindwaaban gegoon nandawendamowaad ji-wiiji'igowaad obimaadiziwiniwaang.

- ❑ Inashowem Waabanong Nakeya'ii Zaaga'iganiing naagajichigaade daa-bagidiniwem idash gegoo ondaadiziwin ji-onachigaadegiban imaa, onjida dash ji-migoshkaajichigemagasinoog zhigwa miinawaa da-ondiziwig imaa gechiwaag gaa-ayaawaad.
- ❑ Inashowem gaawiin bemaadiziwaad gegoon onachigewaad imaa ji-migoshkaaji'aasigwaa awiya' imaa eyaanid zhigwa ji-migoshkaajitoosigwaa bagwadakamig.
- ❑ Inashowem gaawiin gegoon izhichigeng ji-migoshkaajichaadesinog gegoon ge-ondaadizingiban gemaa gegoon imaa nakeya'ii ji-nishiwaanaajichigaadesinog.
- ❑ Inashowem omaa Manitoba gaa-ayaawaad ji-gichi-inendamowaad gakina gegoon imaa ge-mikigaadegiban. Daabishkoo odizhitwaawiniwaan imaa gaa-ayaawaad zhigwa gaye iniwen gegoonan gaagii-bi-ondaadiziyang.
- ❑ Inashowem giishin ji-mamino-ayaayang, ji-gichi-inenjigaadegin bagwajaya'ing eyaamagakin daabishkoo awesiiyag, noopamakamig, niibiin, noodin, azhashki, asiniig zhigwa gakina gegoon imaa eyaamagakin nakeya'ii. Owe aki giwiiji'igomin gikenjigaadeg aweneniwiyang Anishinaabewiyang, Manitoba-akiing zhigwa Kaanada-akiing onjiiyang.

Bebakaan gegoon gechi-inendaagwakin ji-ganawaabanjigaadegin omaa izhichigewining. Onjida imaa gaa-ayaawaad ji-gigibii'igaadenigin imaa giizhaakonigewining wegonenan nendawendamowaad wiinawaa onji. Zhigwa miinawaa gegoo ji-onachigaadeg bigo igo apii awiya gegoo noonde-ikidod ji-bizindawindiban megwaa dazhiikigaadeg owe izhichigewin. Onjida miinawaa ji-ganawaabanjigaadeg aaniin ezhi-wiijiwesemagak bagwadakamig izhitwaawining. Mii dash ji-migoshkaajichigaadesinog aaniin Anishinaabeg ezhi-ondaadiziwaad imaa akiing. Zhigwa gaye ji-babaamenjigaadesinogin enaakonigeng agwi'idiwining. Da-giginigaadewan ini Inaakonigewinan Giizhaakonigeng megwaa dazhiikigaadeg owe izhichigewin memindage Gichi-ogimaag zazagaswe'idiwaad.

Miziwekamig Izhichigewin gaa-niigaanishkamowaad ogichi-inendaanaawaa' odaanaang gaa-bi-izhi-ganandawichigaadeg aki zhigwa aaniin noongom ge-izhichigengiban ji-zagakibii'igaadegin ono izhichigewinan. Giishpin dash gegoon zagakibii'igaadesinogin ji-izhichigesiiing, weweni na'egaaj da-dazhiikigaade. Daabishkoo, giishin gegoo ozhibii'igaadesinog ji-aabajichigaadegiban, gaawiin zhemaag anokiiwin da-onachigaadesinon, akawe weweni da-ganawaabanjigaade jibwaa gegoo izhichigeng. Akawe nitam onashoweng jibwaa gegoo izhichigeng, mii dash onji gakina gegoo akawe ji-gikenjigaadegiban. Giishin wiin idash gegoo gikendanziwaang gemaa gegoo ozhibii'igaadesinog aaniin gechiwaag imaa gaa-ayaawaad ezhichigewaad gemaa gegoo ji-migoshkaajitoopan bagwadakamig, gaawiin gegoo da-izhichigesiiim.

Apii giizhichigeng, igiwe gaa-niigaanishkamowaad owe izhichigewin, da-wiindamaagewag aaniin imaa gechiwaag gaa-ayaawaad ge-izhichigewaapan. Zhigwa miinawaa oga-wiindamawaawaa' iniwe gichi-ogimaan gaa-anokiiawaawaad gakina sa go imaa ezhi-dibendaagozid imaa gemaa apooshke awiya gaawii-onachiged gegoo imaa.

Mii dash onowen giizhaakonigewinan gaawii-aabadakin ji-dazhiikigaadeg iwe waabanong nakeya'ii zaaga'iganiing minik ji-giizhichigeng.

4. WAABANONG NAKEYA'II WINNIPEG ZAAGA'IGANIING IZHICHIGEWIN

Apii gaa-wiindamaageng wii-dazhiikigaadeg waabanong nakeya'ii zaaga'iganiing 2000 gaa-izhiseg, niswewig gichi-ogimaakaanag gii-izhichigewag ji-wiindamawaawaad Anishinaabe', gechiwaag imaa gaa-ayaawaad zhigwa gechiwaag oodenawan, apooshke sago bigo awiyag imaa gaa-ayaanid. Ogi-dazhindaanaawaa' aaniin ge-inigokwaagiban akiikaan gaawii-onachigaadeg, aaniin igaye memindage ge-izhichigengiban apii maajichigaadeg. Zhigwa miinawaa ogii-dazhindaanaawaa' aanapii ge-maajichigaadegiban, wegonen niigaan ji-ganawaabanjigaadegiban zhigwa aaniin ge-izhi-minosegiban gakina awiya ji-gikendangiban aaniin ayizhichigeng ani-dazhiikigaadeg owe izhichigewin. Apii gii-giizhichigeng, igiwe Manitoba Conservation's Public Registry Network gaa-inindwaa gii-miinaawag giizhaakonigebii'igan ji-maada'ookiwaad zhigwa ji-zaswe-aajimowaad

aaniin gaa-ikidong. Zhigwa miinawaa omaa gii-achigaade iwe giizhaakonigewin www.gov.mb.ca/conservation/eastsideplan. Mii-sa gakina gaa-niigaanishkamowaad owe izhichigewin gii-izhichigewag ji-wiindamaagewaad aaniin ji-ayizhichigaadenig iwe mazina'igan. Gichi-ogimaakaan bezhig ogii-bimosaadaan ji-giizhitoowaad.

Gaa-ishkwaa gaganooaawaad gagaana awiya aaniin ge-izhichigengiban, gaa-niigaanishkamowaad zhigwa anishinaabeg gaa-wiidoogaagewaad gii-izhichigewag ji-babaa-ayizhaawaad miziwe waabanong nakeya'ii Winnipeg Zaaga'iganiing wii-gaganooaawaad gechiwaag imaa gaa-ayaanid.

Gii-babaa-ayizhaawag miziwe imaa waabanong nakeya'ii wii-wiindamaagewaad awenenag waa-niigaanishkamowaad owe izhichigewin. Ogii-noonde-gikendaanaawaa' aaniin gechiwaag imaa ikwewag, oshki-aya'aag zhigwa gichi-anishinaabeg enendamowaad owe gaawii-izhichigeng memindage aaniin ge-izhisegiban gechiwaag imaa gaa-ayawaad. Zhigwa miinawaa ji-gagikenjigaadeg aaniin ayinakamigizing anokaajigaadeg owe izhichigewin. Gaa-niigaanishkamowaad ogiizhaakonigewiniwaa ogii-mazinaatebidoonaawaa' zhigwa gaye ozhibii'amowaad zhaaganaashimowin, anishinaabemowin, omashkiigoomowin zhigwa nakawemowin ogii-aabajitoonaawaan ji-wiindamaagewaad odizhichigewiniwaa.

November 2003, gaa-niigaanabiwaad zhigwa anishinaabewi-ogimaakaanag ogii-wiiji'igowaan gichi-ogimaakaan' ji-wiidadimaawaad nishwaasimidana dasing 34 ishkongiganan zhigwa zhooniyaawigimaa. Gii-zagakibii'igaade aaniin gaa-ayikidowaad mazina'iganing What We Heard gii-izhinikaade. (Waabandan gakina mazina'igan Public Registry zhigwa ESPI naagadawenjiganaabikong)

Wiidadindiwaad gaagii-onasaawaad gaa-niigaanabiwaad zhigwa anishinaabewi-ogimaakaanag, ogii-ganawaabandaanaawaa' aaniin ge-izhi-maajichigewaapan. Apii gikendamowaad gaawiin odaa-giizhitoosiinaawaa' odizhichigewiniwaa apii gaagii-onatood gichi-ogimaa, nandawaa gaa-niigaanabiwaad zhigwa anishinaabewi-ogimaakaanag ogii-zagakibii'anaawaan gaagii-maawandoonamowaad ekidong. Mii dash gaa-onji-gikendamowaad onjida geyaabi gakina awiya ji-wiidanokiindid bekish anokaadamowaad owe izhichigewin.

Gaagii-ikidong apii gaagii-zagaswe'iding waabanong nakeya'ii zaaga'iganiing zhigwa gaagii-ozhibii'igaadeg imaa What We Heard mazina'iganing omaa maamawibii'igaadewan. Ji-gikenjigaadeg idash nitam babaa-ayizhaang zhaawanong nakeya'ii zaaga'iganiing gii-babaa-anamikaagem gaawiin win gegoon gii-babaa-gagwedwesiim. Gii-gwaawaanjichigem wegonen ge-andawenjigaadegibaniin giishin gegoon babaa-gagwedweng. Mii owe bezhig ashodamaagewin ji-ganawenjigaadeg. Gaawiin zhemaag gegoo da-giizhaakonigesiiim baanimaa gakina gegoo gii-giizhichigeng. Mii dash ogowe gaa-niigaanishkamowaad geyaabi wii-zagakibii'anaawaan wegonen wiindamawindwaa ji-izhichigewaapan.

Gewiinawaa Anishinaabewi-ogimaakaanag gaa-wiidoogaagewaad ogii-wiidadimaawaa' Manitoba Gichi-ogimaakaan' ji-ozhibii'amowaad onashowewi-mazina'igan Memorandum of Understanding gaa-izhinikaadeg ji-onatoowaad onashowewi-mazina'igan aaniin aaniin ji-izhichigengiban iwe Waabanong Nakeya'ii Zaaga'iganiing izhichigewin. Aazha Manitoba Gichi-ogimaa ogii-wiidadimaa' wiisaakodewiniwa' imaa nakeya'ii zaaga'iganiing.

Onashowewin Zagakibii'igewin

Zagakibii'igewin gaagii-ozhibii'ang gichi-ogimaakaan gaa-wiidanokiimaad iniwe gaa-niigaanishkaminid waabanong nakeya'ii zaaga'iganiing izhichigewin zhigwa anishinaabewi-ogimaakaanag Phase 1 Final Report gii-izhinikaadeni. Gii-gagwedwem wegonen miinawaa ge-izhichigengiban anokaajigaadeg owe izhichigewin. Inaabin Chapter 5 zhigwa 6 wiindamaagem wegonen gaa-ikidong.

Anishinaabe Agwi'idiwin zhigwa ashodamaagewin, Anishinaabeg gaa-maamiinochigaadamowaad odishkoniganiwaan, Anishinaabe Izhichigewin, Bagwadakamig gaa-naagajichigaadeg, Aaniin ji-izhichigaadegin akiing onji gaa-ondaadizing, akiin gaa-aabajichigaadegin zhigwa miinawaa akiin gaawii-aabajichigaadegin,

Noopimiing wendaadizing gegoon, bimiwiwewin, Omawadishiweg maminwaagaadakamigiziwin, Waasigan gaa-ozhichigaadeg, Biiwaabikokeng zhigwa miinawaa bebakaan gegoon ge-ganawaabanjigaadegin.

Gii-giizhaakonigem wegonen ge-nendawenjigaadegiban:

“Aaniin enaabandamaang imaa nakeya’ii, aaniin ji-izhichigengiban memindage imaa onji, ji-ganandawaag bagwadakamig, aaniin ji-izhichigeng akiin gaa-naagajichigaadegin, zhigwa miinawaa akiikaanan akii-mazina’iganing gaa-ozhibii’igaadegin. Aaniin miinawaa ji-ayizhichengiban ani-niigaan akiin gaawii-aabadakin, memindage aaniin ji-izhisegiban onashowewi-mazina’iganan onachigaadegin.”

Gaawiin wiin mashi giizhichigesiiim ganawaabanjigaadeg iwe aki gaawii-anokaajigaadeg, geyaabi ji-maamiinobii’igaadegin zagakibii’igewinan.

Awiyag ge-izhi-wiidookaagewaapan

Apii gaa-maajichigaadeg Waabanong Nakeya’ii Izhichigewin, gichi-ogimaa ogii-nandawendaan gechiwaag imaa gaa-ayaawaad jiigi-zaaga’iganiing ji-wiidabingewaad zagaswe’iding dazhinjigaadeg aaniin ji-izhichigengiban. Gaa-niigaanishkamowaad owe izhichigewin da-gwaawaanjichigewag aaniin ge-ani-izhiseg niigaan ji-ganandawaag bagwajaya’ii da-gikenjigaadeg aaniin ge-izhi-bimenjigaadeg. Mii gichi-ogimaa gaa-onji-izhichiged gakina awiya ezhi-dibendaagozid imaa nakeya’ii ji-wiidabinged zagaswe’iding onaakonigeng aaniin ji-ayizhichigengiban.

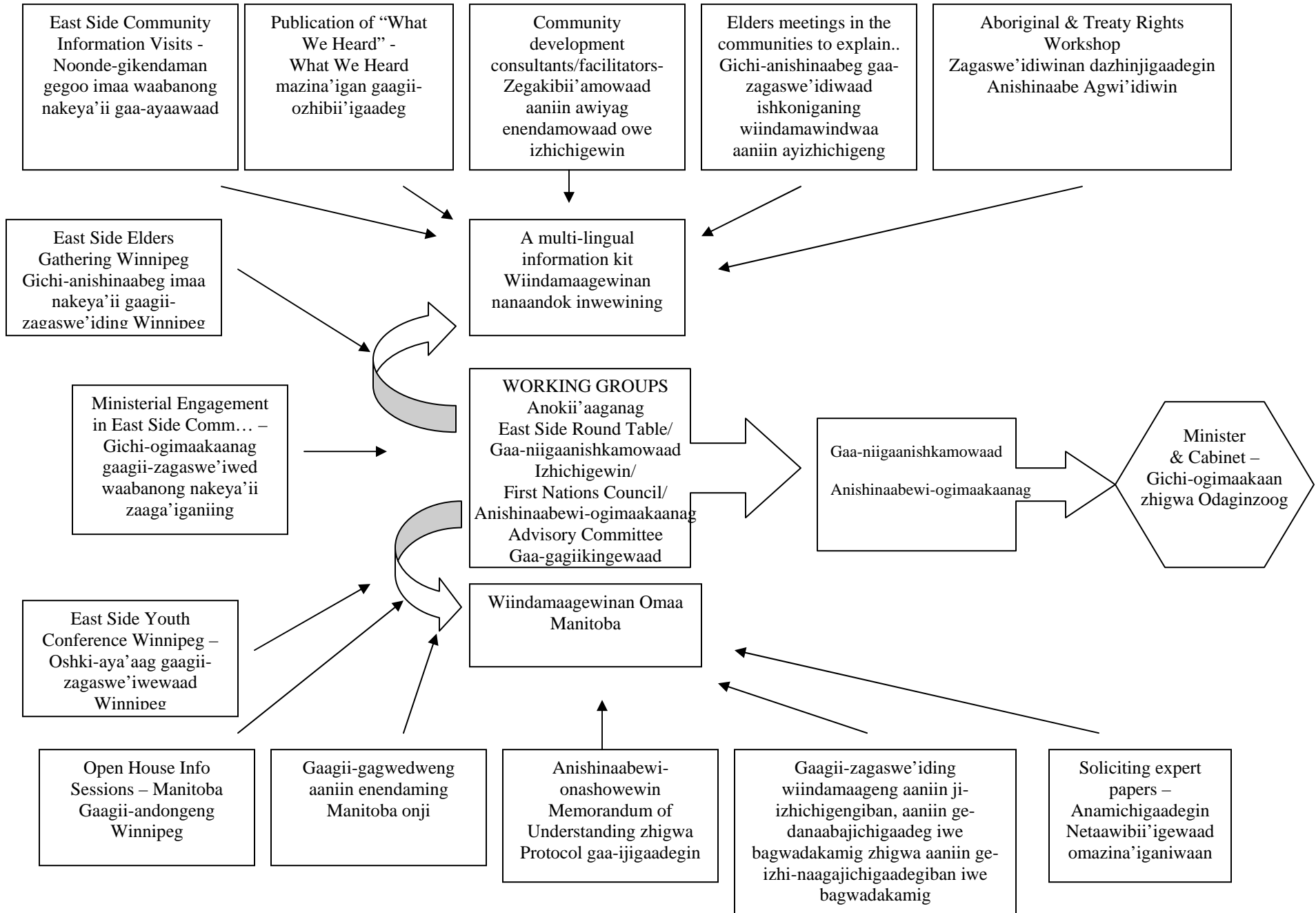
Onjida gikendamooinndwaa awiyag giishin gegoo izhichigeyan bakaan ji-izhiwebiziwaapan obimaadiziwiniwaang. Geget wiin geyaabi gagaana gegoon ji-dazhiikigaadeg, gakina awiyag gaa-wiidookaagewaad noonde-wiiji’iwewag minik ge-izhi-gashkitoowaad zhigwa ge-izhi-minoseg gegoo.

Apii gaa-zagakibii’igeng aaniin ji-izhichigaadangan Manitoba Gichi-ogimaa owe miziwekamig izhichigewin, zhigwa miinawaa gegoon ji-ganawaabanjigaadegiban, (iwe onashowewin Protocols of Agreement), igiwe Gaa-niigaanishkamowaad dago Anishinaabewi-ogimaakaanag gii-inaakonigewag ji-gagagwedweng gechiwaag imaa aaniin ge-izhichigengiban. Aanind aaniin ji-izhichigeng zagakibii’igaadewan omaa.

- ❑ Nitam ini gagwedwewinan gaagii-nakwechigaadegin gii-zagakibii’igaadewan. Mii ini zagakibii’igewinan ozhibii’igaadewan imaa Manitoba Public Registry (Registry File # 478.00) zhigwa miinawaa East Side Lake Winnipeg Initiative nagadawenjiganaabikong.
- ❑ Ji-gikinjigaadeg, wiindamaagewin gii-aanikanoochibii’igaade. Zhaaganaashimowin, Omashkiigoomowin, Anishinaabemowin, Nakawewininiimowin zhigwa gakina gii-anishinaabebii’igaadewan. Gii-mazinaateshijigaadewan, CD gii-achigaadewan, gii-zagakibii’igaadewan, akiikaani-mazina’iganan gii-ozhichigaadewan zhigwa mazina’iganan gagwedwewinan ozhibii’igaadegin bigo awiya noonde-aabajitood.
- ❑ Nitam zagaswe’idiwinan gaagii-ayaamagakin 34 ishkongiganan gii-izhaam zhigwa Northern Affairs dago wiisaakodewinini oninamaawinan imaa gechiwaag waabanong nakeya’ii zaaga’iganiing Lake Winnipeg gaa-ijigaadeg gii-zagakibii’igaadewan.
- ❑ Igiwe gaa-niigaanishkamowaad ogii-ozhibii’aanaawaa’ mazina’igan What We Heard (Wegonen gaa-noondamaang) gii-izhinikaadeni. Bebakaan gegoo gaa-ikidong, aaniin enenjigaadeg ji-izhichigengiban zhigwa aaniin ayinendamowaad gechiwaag imaa gaa-ayaawaad. Ozhibii’igaade aandi gaa-onjisegin ini ikidowinan, wegonen igaye enendaming ji-izhichigengiban.
- ❑ Da-izhichigem wegonen ji-nendawenjigaadeg zhigwa gaye wegonen ji-gwaawaanjichigengiban miinawaa zagaswe’iding gagwedweng awegonen miinawaa ji-ganawaabanjigaadegin anokaajigaadeg owe izhichigewin.

PUBLIC PARTICIPATION PROCESS (Page 21)

Maamawinokiiwin



- ❑ Gegaa gakina imaa gaa-ayaawaad gechiwaag anishinaabewiwag, gaa-niigaanishkamowaad zhigwa anishinaabewi-ogimaakaanag wii-onatoonaawaa' zagaswe'idiwin gichi-anishinaabeg onji. Wii-gagwejimaawag aaniin wiinawaa enendamowaad gaa-ayizhichigeng dazhiikigaadeg owe izhichigewin. Daabida gichi-anishinaabeg andomaawag zagaswe'idiwaad gaa-niigaanishkamowaad owe izhichigewin.
- ❑ Gaa-niigaanishkamowaad zhigwa Anishinaabewi-ogimaakaanag ogii-onatoonaawaa' zagaswe'idiwin jiganawaabanjigaadeg aaniin ge-izhisegiban anishinaabe agwi'idiwin onatoowaad owe izhichigewin. "Recent Case Law and Aboriginal & Treaty Rights and Entitlements" ogii-izhinikaadaanaawaa' ozagaswe'idiwiniwaa.
- ❑ Gaa-niigaanishkamowaad owe izhichigewin gii-andongewag wii-wiindamaagewaad aaniin waa-izhichigaadeg iwe Miziwekamig Izhichigewin Broad Area Plan gaa-ijigaadeg. Gii-gagwejimaawag gaagii-bi-izhaawaad ji-mooshkinebii'amowaad mazina'igan aaniin wiinawaa enendamowaad.
- ❑ Anishinaabeg gaa-ayaawaad imaa waabanong nakeya'ii zaaga'iganiin zhigwa gichi-ogimaa omaa Manitoba ogii-jakibii'aanaawaa' onashowewi-mazina'igan onatoowaad aaniin ji-izhichigengiban dazhiikigaademagak imaa nakeya'ii. Gii-ikidom mii bezhigon ji-izhichigaanindwaa wiisaakodewiniwag imaa gaa-ayaawaad.

Onjida bebakaan awiyag ji-wiidabimindwaa onashoweng aaniin ji-izhichigaadeg dazhiikigaadeg iwe waabanong nakeya'ii zaaga'iganiing.

PAGE 21

East Side Community information Visits

Noonde-gikendaman gegoo imaa waabanong nakeya'ii gaa-ayaawaad

Publication of "What We Heard"

What We Heard mazina'igan gaagii-ozhibii'igaadeg

Community of development consultants/facilitators to develop input

Zegakibii'amowaad aaniin awiyag enendamowaad owe izhichigewin

Elders meetings in communities to explain concept of Broad Area Plan

Gichi-anishinaabeg gaa-zagaswe'idiwaad ishkonganing wiindamawindwaa aaniin ayizhichigeng

Aboriginal & Treaty Rights Workshop

Zagaswe'idiwinan dazhinjigaadegin Anishinaabe Agwi'idiwin

East Side Elders Gathering Winnipeg

Gichi-anishinaabeg imaa nakeya'ii gaagii-zagaswe'iding Winnipeg

Ministerial Engagement in East Side Communities

Gichi-ogimaakaanag gaagii-zagaswe'iwed waabanong nakeya'ii zaaga'iganiing

East Side Youth Conference Winnipeg

Oshki-aya'aag gaagii-zagaswe'iwewaad Winnipeg

Open House information Sessions - Manitoba

Gaagii-andongeng Winnipeg

Request for Public Submissions Manitoba
Gaagii-gagwedweng aaniin enendaming Manitoba onji

Aboriginal Memorandum of Understanding & Protocol
Anishinaabewi-onashowewin Memorandum of Understanding zhigwa Protocol gaa-ijigaadegin

International Symposium of Planning, Resource Use & Resource Protection in the Boreal Environment
Gaagii-zagaswe'iding wiindamaageng aaniin ji-izhichigengiban, aaniin ge-danaabajichigaadeg iwe bagwadakamig zhigwa aaniin ge-izhi-naagajichigaadegiban iwe bagwadakamig

Soliciting expert papers
Anamichigaadegin Netaawibii'igewaad omazina'iganiwaan

A multi-lingual information kit
Wiindamaagewinan nanaandok inwewining

Working Groups
Anokii'aaganag

East Side Round Table
Gaa-niigaanishkamowaad Izhichigewin

First Nations Council
Anishinaabewi-ogimaakaanag

Advisory Committee
Gaa-gagiikingewaad

Manitoba Public Registry
Wiindamaagewinan Omaa Manitoba

East Side Round table
Gaa-niigaanishkamowaad

First Nations Council
Anishinaabewi-ogimaakaanag

Minister & Cabinet
Gichi-ogimaakaan zhigwa Odaginzoog

5. Wegonen Ekidong Niigaan Ji-izhichigengiban Maadanokaadeg Owe Izhichigewin

5.1 Odaapinigaadeg Aaniin Ge-ayizhichigeng: Anokaajigaadeg iwe Miziwekamig Izhichigewin zhigwa wegonen miinawaa ge-izhichigengiban – Megwaa Ezhichigeng

Gaa-izhibii'igaadeg omaa, niibowa gegoon aazha gii-giizhichigem. Geyaabi dash gagaana gegoon ji-izhichigeng. Owe zagakibii'igewin wiindamaagemagan aaniin megwaa ayizhichigeng zhigwa wegonen miinawaa ge-izhichigengiban dazhiikigaadeg owe anokiiwin. Owe gaa-izhichigeng, bagosendaagwan gakina gegoon ji-minosegiban zhigwa gakina awiya da-mino-wiiji'idi.

Gaawiin aapiji niibowa awiyag izhichigesiiwag gaa-izhichigaadamowaad owe izhichigewin. Weweni gwayak jinanekaajichigewaad. Da-wiiji'iwemagan bakaan omaa Canada bagwadakamig dazhiikigaadeg. Da-minosemagan

owe gaa-izhi-dazhiikigaadeg, gakina awiyag aaniish gegoo ezhi-ganawaabandamowaad imaa nakeya'ii gii-wiiji'iwewag onachigaadeg owe izhichigewin imaa waabanong nakeya'ii zaaga'iganiing.

Mii onjida gichi-ogimaa ji-wiidookaaged ji-giizhichigaadeg owe izhichigewin. Gaa-niigaanishkamowaad zhigwa Anishinaabewi-ogimaakaanag gii-wiindamawaawag mii owe maawaj gwayakochigeng anokaajigaadeg izhichigewin gichi-ogimaa omaa Manitoba gaa-bi-wiidookaaged. Giishin weweni dazhiikigaadeg, nawaj daminose apii ishkwaaw giizhichigeng.

Gaa-niigaanishkamowaad owe izhichigewin zhigwa Anishinaabewi-ogimaakaanag gaa-wiidookaagewaad geyaabi inendamoo onjida ji-wiidanokiimaawaad gichi-ogimaan zhigwa bebakaan awiya' ji-giizhitoowaad owe miziwekamig waabanong nakeya'ii zaaga'iganiing izhichigewin. Owe gaa-izhichigeng East Side First Nations Council (ESFNC) gaa-izhinikaazowaad, da-wiidookaagewag gewiinawaa minik ji-onasindwaa ge-niigaanishkamowaad owe anokiiwin. Ganawaabanjigaade aaniin ge-izhi-niigaanishkamowaad niigaan owe izhichigewin. Gaawiin gegoo ji-zanagakipan ji-onasindwaaban, gegoo wendak ji-izhichigengiban. Gaawiin ginwezh ji-ozhibii'igeng gemaa ji-zagakibii'igeng megwaa anokaajigaadeg owe izhichigewin. Gaawiin igaye ji-zanagak ji-wiindamaageng aaniin noonde-izhichigeng.

Gaawiin aaniish ginwezh imaa da-abisiwag ogowe nitam ge-niigaanishkamowaapan owe izhichigewin, onjida aaniin ezhi-bimichigaadegin gegoon imaa nakeya'ii daabishkoo onashowewinan geyaabi da-aabajichigaadewan. Gagwe-izhichigem nitam gaa-niigaanishkamowaad wiinawaa ji-gashkitoowaad ji-gwaawaanjichigewaad gakina gegoon ji-ganawaabanjigaadegin.

Nanaandok daa-izhichigem maawaj ge-izhi-minosegiban ji-onasindwaaban ge-niigaanishkamowaad niigaan owe izhichigewin. Aazha wiin onate onashowewin wegonen ge-izhichigengiban ji-onasindwaaban igiwe ji-niigaanabiwaad anokaajigaadeg iwe waabanong nakeya'ii izhichigewin.

Iwe The Planning Act gaa-ijigaadeg daa-aabadan ji-onasindwaaban ge-niigaanishkamowaad. Gichi-ogimaakaanag daa-izhichigewag onashowewin ji-ozhitoowaad ji-gikinawaajichigaadenig imaa gaawii-dazhiikewaad. Mii dash iwe onashowewin daa-aabadan ji-naagajichigaadegiban imaa nakeya'ii bagwadakamig. Onjida dash ji-bimosaaajigaadeg iwe onashowewin section 10 ezhinikaadeg dazhiikigaadeg owe izhichigewin daabishkoo daa-gibitigaadewan aanind anokiiwinan megwaa gaa-dazhiikigaadegin imaa nakeya'ii.

Maagizhaa geyaabi bezhig onashowewin daa-aabadan The Planning Act (Section 99) izhinikaade. Inaakonigem imaa Gichi-ogimaakaan Anishinaabe onji oadaa-niigaanishkaan ji-wiidanokiindang ini oodenaansan zhigwa ishkongnan gaa-wiidookaagesinogin omaa izhi izhichigewining. Wiin onashowewinan oadaa-niigaanabiitaan.

Bigo waa-izhichigengwen, imaa gaa-ozhibii'igaadegin giizhaakonigewining oga-wiiji'igonaawaa' gaa-niigaanishkamowaad owe izhichigewin ji-wiidanokiimaawaad Anishinaabe', Wiisaakodewiniwaa' zhigwa ini oodenaansan dago ishkongnan aaniin ge-izhichigewaapan. Wiinawaa niigaan oga-ganawaabandaanaawaa' aaniin ayizhichigeng zhigwa gaye ji-bookonigaadesinogin ini onashowewinan.

Zhigwa miinawaa ani-niswewig ge-izhichigengiban, Gichi-ogimaakaan Anishinaabe' onji oadaa-aabajitoo onashowewin The Northern Affairs Act gaa-ijigaadeg, gwayak ji-anokaajigaadeg owe izhichigewin giwedonong nakeya'ii Manitoba akiing. Giishin idash owe izhichigeng gichi-ogimaakaan oadaa-biminaan onashowewin imaa oodenaansan zhigwa ishkongnan gaa-wiiji'iwesigwaa. Gichi-ogimaakaan oadaa-gagiiginaan awiya ji-giigidootamaagenid imaa nakeya'ii gechiwaag oodenaansing gemaa ishkongnaning. Wiin igaye oadaa-niigaanishkaan aaniin gechiwaag imaa gaa-ayaanid ji-izhichigenipan.

Gichi-ogimaakaan igaye oadaa-gashkitoon aabajitoo iwe onashowewin ji-niigaanishkaminid Waabanong Zaaga'iganiing gaa-niigaanishkamowaad zhigwa Anishinaabewi-ogimaakaanag ji-niigaanishkamaagod.

Zhigwa miinawaa, daa-aabadan igaye iwe onashowewin The Wildlife Act gaa-ijigaadeg ji'wiji'igowaad ogowe gaa-niigaanishkamowaad owe izhichigewin. Oadaa-gashkitoon gichi-ogimaakaan ji-wiidanokiimigod bigo awiya' gechiwaag ningoji ayaanid ji-niizho-naagaji'aawaad awesiya' gechiwaag imaa. Mii-go gaye ge-izhi

dagonindwaa giishin zagakibii'igeng, miiniding gikinoo'amaagewin gemaa anokiiwin ji-naagajitoowaad bagwadakamig. Zhigwa ishkwaa' onashowewin iwe Northern Flood Agreement NFA gaa-ijigaadeg, gii-onachigaadeg gaa-ishkwaa-mooshka'ang giuwedinong waasiganikeng. Inuwe giuwedinong ishkoniganan gaagii-mooshka'angin, ogii-jakibii'anaawaa' onashowewin ji-wiidanokiimaawaad Gichi-ogimaan.

Giishin wiiwindwaa gaawii-niigaanishkamowaad owe izhichigewin, oday-gashkitoonaawaa' gwayak jidazhiikamowaad odanokiiwiniwaa. Mii-go eta ginwezh ono onakonigewinan izhisewan ji-onachigaadegin memindage gagaana awiyag niibowa gegoon bebakaan nenaandawendamowaad aaniin ji-izhichigengiban. Zhigwa miinawaa iwe onashowewin Protocols of Agreement gaa-ijigaadeg, daa-andawenjigaadeg jiwidanokiinding.

Mii zhigwa amanj ge-inaasagaadendiwaapan gechiwaag imaa eyaawaad zhigwa miziwe imaa eyaanid. Mii dash igiwe gaawii-niigaanishkamowaad jimiikamowaad aaniin ge-izhi-onaakonigewaad, zhigwa gaye aaniin ge-izhi-wiidaakonigemaawaad iniwe ishkoniganing dago oodenaansing gaa-ayaanid.

Geget dash wiin gii-giizhichigem igiwe gaawii-niigaanishkamowaad jigashkitoowaad jiwidaakonigemaawaad bebakaan awiya ezhi-dibendaagozinid imaa izhichigewining.

5.1 Ji-izhichigeng

5.1.1

Gichi-ogimaa omaa Manitoba ginigaanj jigaganooaad, jiwidabimaad, jigagagwejimaad iniwe gaa-ayaanid waabanong nakeya'ii zaaga'iganiing. Zhigwa miinawaa awiya' gegoo ezhi-dibendaagoziwaad imaa jibimosaadamowaad gaawii-niigaanishkamowaad owe izhichigewin ini onashowewinan daabishkoo anishinaabewi-agwi'idiwin.

5.1.2

Gichi-ogimaa omaa Manitoba onjida jiwidabimaad wiisaakodewininiwa' imaa gaa-ayaanid waabanong nakeya'ii zaaga'iganiing jibimosaadamowaad onashowewinan daabishkoo Anishinaabewi-agwi'idiwin.

5.1.3

Gichi-ogimaa omaa Manitoba jinishike-izhichiged gemaa jiwidanokiimaad awiya' anokaajigaadeg owe izhichigewin minik jigiizhichigeng.

5.1.4

Gichi-ogimaakaan gaa-naagajitood bagwadakamig oga-andone'waa' awiya' jiwiji'igod ondinaad zhooniyaan jianokaadang owe izhichigewin daabishkoo bakaan ogimaakaan', gichi-ogimaan, waabanong nakeya'ii gaa-ayaanid, zhigwa miinawaa igiwe gaa-anokaadamowaad bagwadakamig.

5.1.5

Gichi-ogimaa Manitoba onji bizaanigo wianokaadaan owe wiidanokiimaad gaa-niigaanishkaminid owe izhichigewin. Oga-wiindamaagoo' gaa-gagiikimigod aaniin ge-izhichiged minik jigiizhaakonamowaad ini onashowewinan Broad Area Plan zhigwa Protocols of Agreement jionatoowaad gichi-ogimaa Manitoba, Anishinaabewi-ogimaakaanag zhigwa wiisaakodewininiwag imaa onji nakeya'ii.

5.1.6

Gaa-niigaanishkamowaad Waabanong Nakeya'ii Zaaga'iganiing izhichigewin jimiinindwaa oshki-onaakonigewin:

- bizaanigo jiwidabimaawaad Anishinaabe' imaa nakeya'ii jionashowewaad aaniin jiayizhichigeng onachigaadeg owe izhichigewin;

- ❑ Bizaanigo ji-wiidabimaawaad wiisaakodewininiwa' imaa onji nakeya'ii ji-onashowewaad aaniin ji-ayizhichigengiban onachigaadeg owe izhichigewin;
- ❑ Bizaanigo ji-zagakibii'amowaad, ji-wiindamaagewaad aaniin ekidong, zhidwa ji-onashowewaad ji-giizhaakonamowaad aaniin waa-izhichigeng waabanong nakeya'ii zaaga'iganiing bimosadamowaad gichi-ogimaa odoonashowewin;
- ❑ Bizaanigo ji-maadanaadamowaad waabanong nakeya'ii miziwekamig izhichigewin, bekish ji-wiindamawaawaad gichi-ogimaan aaniin ayizhichigewaad memindage wii-gichi-anokaadamowaad gegoo imaa nakeya'ii.

Minik ji-giizhaakonigaadamowaad ini onashowewinan Broad Area Plan zhidwa Protocols of Agreement, gaawii-niigaanishkamowaad owe izhichigewin da-niigaaniiwag maadanokaadeg iwe izhichigewin.

5.1.7

Manitoba Gichi-ogimaa oga-ganawaabandaanan ini inakonigewinan 5.1 gaa-ozhibii'igaadegin zhidwa onasaad ini gaawii-niigaanishkaminid owe izhichigewin.

5.1.8

Manitoba Gichi-ogimaa oga-wiidabimaa' gaa-niigaanishkaminid owe izhichigewin ji-wiindamaagod aaniin ji-izhichigeng gegoo dazhiikigaadeg imaa nakeya'ii abooshke waakaa'igeng gemaa gaye bakaan gegoo maajichigaadeg imaa daabishkoo gaa-izhibii'igaadeg imaa mazina'iganing Phase 1 – Final Report. Giishin idash igiwe gaawii-niigaanishkamowaad oga-gashkitoonaawaa' ji-biminamowaad onashowewin aaniin ji-izhichigengiban minik ji-giizhaakonigaadegin ini onashowewin gaa-ganawaabanjigaadegin. Ji-gikenjigaadeg idash gaawiiin wiin da-babaamenjigaadesinoon ishkoniganan gemaa agwi'idiwini-akiin megwaa anokaajigaadeg iwe bagwadakamig waabanong nakeya'ii zaaga'iganiing. Mii gakina Manitoba gichi-ogimaa, Anishinaabewi-ogimaakaanag, Wiisaakodewininiwag oga-maamawiikandaanaawaa' owe izhichigewin.

5.1.9

Zhidwa igiwe gaawii-niigaanishkamowaad waabanong nakeya'ii zaaga'iganiing izhichigewin,

- ❑ Gaawii-niigaanishkamowaad zhidwa Manitoba gichi-ogimaa oga-wiidanokiimaawaan awiyan ge-niigaanabiitaminid owe izhichigewin ji-maamiinochigewaad;
- ❑ Gaawii-niigaanishkamowad 21 da-dashiwag, 16 Anishinaabewi-ogimaakaanag gemaa ge-naabishkamaagowaad, bezhig wiisaakodewinini gemaa ge-naabishkamaagod zhidwa niwin gegagiiiginindwaa ji-wiidookaagewaad, memindage awiya gechiwaag imaa onji;
- ❑ Ge-niigaanishkamowaad owe izhichigewin zhidwa Manitoba gichi-ogimaa oga-gagiiginaawaan awiyan ji-onaakonaminid odanokiiwiniwaan.

5.1.10

Gakina inakonigewinan ge-genawaabanjigaadegin imaa izhichigewining ezhi-niizhiwaad ge-niigaanishkamowaad zhidwa Anishinaabewi-ogimaakaanag oga-giizhaakonaanaawaan. Giishin owe izhiseg, gaawiiin gegoo da-izhichigesiim imaa nakeya'ii baamaa Anishinaabeg imaa gechiwaag eyaawaad bagidinamowaad. Mii-go dash bezhigon ge-izhiseg giishin ge-wii-niigaanishkamowaad nayendanzigwaa gegoo awiyag imaa gechiwaag gegoo wii-izhichigaadamowaad iwe bagwadakamig. Onjida ji-bimosaaajigaadeg onashowewin giishpin awiya gegoo wii-izhichigaadang iwe bagwadakamig waabanong nakeya'ii zaaga'iganiing.

5.1.11

Ge-niigaanishkamowaad owe izhichigewin zhidwa Manitoba gichi-ogimaa oga-wiiji'igowaan awiyan jiganawaabandaminid odinaakonigewiniwaan.

5.1.12

Ge-niigaanishkamowaad da-wiiji'aawag ji-giizhaakonamowaad Broad Area Plan gaa-ijigaadeg ji-anokaajigaadeg Miziwekamig waabanong nakeya'ii zaaga'iganiing. Ge-niigaanabiitaminid odinaakonigewiniwaan oga-wiiji'igowaan. Zhidwa miinawaa ge-niigaanishkamowaad bizaanigo oada-wiidanokiimaawaa' odanokii'aaganiwaa' megwaa gaa-wiiji'igowaad gemaa bakaan awiyan oada-naabasaawaan.

5.1.13

Ji-gikenjigaadeg bigo gegoo izhichigeng imaa onjida ji-bimosajigaadegin ini inashowewinan 5.1.8 gaa-ozhibii'igaadegin giishin gegoo wii-izhichigaadeg, daabishkoo onashowewin aaniin ge-izhisegiban bagwadakamig giishpin gegoo izhichigaadeg imaa nakeya'ii zhigwa miinawaa Anishinaabe Agwi'idiwin onjida ji-ganawaabanjigaadegiban. Ikidom, ge-niigaanishkamowaad ji-mazina'ige' aawaad awiyan ji-andooshkamaagowaad gegoo iwe izhi noonde-gikendamowaad.

5.1.14

Bimosaadeg iwe inakonigewin 5.3 gaa-ozhibii'igaadeg, gakina akiin waabanong nakeya'ii zaaga'iganiing awiyag gaa-ayaasigwaa ji-naagajichigaadeg gaa-izhibii'igaadeg imaa Chapter 5.3. Onjida ge-niigaanishkamowaad da-wiindamaagewag wegonen ge-izhichigengiban zhigwa gaye wegonen ge-izhichigesiing imaa nakeya'ii.

5.2 Mino-wiidanokiimindwaa Anishinaabeg: Ge-izhichigeng Giizhaakonigewin

Gidanokiiwin

“Ge-izhichigeng imaa waabanong nakeya'ii zaaga'iganiing akawe ji-ganawaabanjigaadeg Anishinaabe Agwi'idiwin zhigwa ji-bimosajigaadegin onashowewinan imaa COSDI mazina'iganing.”

Gagaana waabanong nakeya'ii zaaga'iganiin gaa-ayaawaad Anishinaabewiwag, memindage agowaaganag ishkongiganing. Ashi ningodwaaswi ini ishkongiganan gegoo igo gakina imaa eyaawaad anishinaabewiwag. Zhigwa wiisaakodewininiwag imaa eyaawaad nawaj bangiinowag, Zhooniyaawigimaan dago gichi-ogimaan obimenimigowaan.

Iwe Miziwekamig gaawii-dazhiikigaadeg waabanong nakeya'ii zaaga'iganiing mii iwe gaa-niigaanabiitamowaad owe izhichigewin gegwe-izhichigewaad. Gegaa gakina imaa eyaawaad anishinaabewiwag, zhigwa wiinawaa imaa ginwezh bi-onji-ayaawag onjida ji-wiidabimindwaa gegoo izhichigeng imaa nakeya'ii. Gewiinawaa wiisaakodewininiwag ji-wiidabimindwaaban. Onjida ezhi-niizhiwaad imaa ji-wiidabimindwaaban onashoweng.

Nishwaasogiizis apan, nitam gaagii-niigaanishkamowaad 80 ishkongiganan zhigwa oodenaansan gii-babaa-ayizhaawag babaa-gagwedwewaad aaniin enendaminid gechiwaag imaa eyaanid. Gii-wiindamawaawag wiinawaa da-aanike-dibaaajimowag aaniin enendaminid imaa eyaanid. Memindage aaniin waa-izhichigeng gizhibaaya'ii odakiimiwaan zhigwa aaniin waa-danaabajichigaadenig. Odaanaang aaniish gegoo gii-bi-izhichigeng, gaawiin gii-gagwejiimaasiwag.

Gaa-izhibii'igaadeg omaa mazina'iganing, gaawiin ji-michi-wiidabimindwaa Anishinaabewi-ogimaakaanag zhigwa Wiisaakodewininiwi-giigidoowininiwag gechiwaag imaa eyaawaad, gewiinawaa ji-onaakonamowaad aaniin ji-izhichigengiban. Ji-giizhaakonigeng owe onakonigewin, ogii-jakibii'aanaawaa' mazina'igan Memorandum of Understanding gaa-ijigaadeg April 24, 2004. Manitoba Gichi-ogimaa zhigwa 13 ishkongiganan ogii-jakibii'aanaawaa' owe inakonigewin. Owe giizhaakonigewin inashowem ezhi-niizhiwaad da-wiidanokiindiwag naagajitoowaad bagwadakamig waabanong nakeya'ii zaaga'iganiing zhigwa da-gwaawaanjichigewag aaniin niigaan ge-ani-izhichigaadenig.

Mii zhigwa iniwen niigaan ji-maamiinochigaadegin da-gwayakochigaadewan imaa Waabanong Nakeya'ii Zaaga'iganiing. Inendaam da-gashkichigaade giishin aabajichigaadeg iwe onashowewin Protocols of Agreement ji-gashkitoowaad owe izhichigewin gaa-niigaanishkamowaad zhigwa Manitoba gichi-ogimaa. Owe onashowewin da-wiiji'iwemagan maamawikaadamowaad owe izhichigewin. Bakaan igaye da-aabajichigaade inakonigewin wiiji-onashowemaawaad wiisaakodewininiwa' imaa onji.

5.2 Aaniin ji-izhichigeng

5.2.1

Onashowewin ji-onaakonigaadeg Manitoba Gichi-ogimaa zhigwa Anishinaabewi-ogimaakaanag ji-aabajitoowaad anokaadamowaad Waabanong Nakeya'ii Zaaga'iganiing Izhichigewin.

5.2.2

Onashowewin ji-onaakonigaadeg Manitoba Gichi-ogimaa zhigwa Wiisaakodewininiwag ji-aabajitoowaad anokaadamowaad Waabanong Nakeya'ii Zaaga'iganiing Izhichigewin.

5.2.3

Manitoba Gichi-ogimaa ji-gagwe-giizhaakonang ini gagwedwewinan Anishinaabe Agwi'idiwining ji-ganawaabanjigaadegin dazhiikigaadeg owe izhichigewin waabanong nakeya'ii zaaga'iganiing.

5.2.4

Gichi-ogimaa onjida ji-onaakonang aaniin ge-izhi-waawijji'idiwaapan igiwe gaawii-anokaadamowaad iwe bagwadakamig waabanong zaaga'iganiing bekish bimosadamowaad onashowewin. Maagizhaa gakina endashiwaad oga-maamawikaadaanaawaa' Manitoba Gichi-ogimaa, Anishinaabewi-ogimaakaanag zhigwa Wiisaakodewininiwag da-inashowem. Mii imaa onji miinawaa da-onaakonigewag ezhi-nisiwaad aaniin ge-izhiseg akiin wii-aabajichigaadegin. Gakina gegoo imaa onashowewining oga-bimosadaanaawaa' giishpin onaakonigaadamowaad akiin.

5.2.5

Jibwaa gegoo maajichigeng waabanong nakeya'ii zaaga'iganiing izhichigewin, gakina gegoo wendaadizing imaa nakeya'ii ji-giizhaakonigeng. Daabishkoo ji-wiidanokiindiwaad imaa gechiwaag enokiiwaad Anishinaabeg, wiisaakodewininiwag zhigwa Manitoba Gichi-ogimaa, apooshke gashkichigewaad gegoo odaapinigaadeg imaa anishinaabewakiing.

5.2.6

Manitoba Gichi-ogimaa, Gichi-ogimaan gaa-anokiitawaawaad zhigwa bebakaan awiyag gaa-anokiitamaazowaad onjida gwayak ji-bimosadamowaad onaakonigewinan Anishinaabeg zhigwa Wiisaakodewininiwag gaagii-jakibii'amowaad giishin gegoo wii-izhichigaadamowaad akiin imaa nakeya'ii. Mii omaa daa-minose ji-wiidanokiimigowaad gechiwaag imaa eyaanid gaa-aabajitoonid iwe aki.

5.2.7

Onjida ji-giizhaakonigaadeg iwe Broad Area Plan onashowewin gaa-ijigaadeg jibwaa gegoo izhichigaadeg iwe bagwadakamig waabanong nakeya'ii zaaga'iganiing izhichigewin. Giishin bimosajigaadeg iwe onashowewin daa-gikenjigaade aaniin ezhi-ondizing gemaa aaniin ge-izhi-ondizing imaa akiing onji. Zhigwa miinawaa daa-gikenjigaade aandi imaa ge-danakamigizing gemaa aandi imaa nakeya'ii ji-migoshkaajichigaadesinog aki. Gaagii-ikidong omaa mazina'iganiing, onjida Anishinaabeg, Wiisaakodewininiwag zhigwa giuwedonong eyaawaad ji-wiijiwindwaa giishin gegoo wii-izhichigaadamowaad odakiwaan. Onjida gichi-ogimaa zhigwa gichi-ogimaakaan anokiitawaawaad ji-wiidookaagewaad gegoo izhichigaadeg iwe aki imaa nakeya'ii.

5.2.8

Giishin wii-onashoweng gegoo wii-izhichigaadamowaad waabanong nakeya'ii zaaga'iganiing aki Anishinaabeg, Wiisaakodewininiwag gemaa giuwedonong eyaawaad, onjida ji-bimosadamowaad iwe onaakonigewin Miziwekamig izhichigewin Broad Area Plan for the East Side of Lake Winnipeg gaa-izhinikaadeg.

5.2.9

Bigo gegoo wii-izhichigeng waabanong nakeya'ii zaaga'iganiing izhichigewin, onjida ji-bimosajigaadeg iwe onaakonigewin gaagii-jakibii'amowaad Anishinaabeg, Wiisaakodewininiwag zhigwa Manitoba Gichi-ogimaa.

5.3 Aaniin ezhichigeng ji-migoshkaajichigaadesinog bagwadakamig

Bezbig gegoo naagajitoowaad gaa-niigaanishkamowaad owe izhichigewin: “Gagwe-ganawenjigaadeg bagwadakamig zbigwa gegoon netaawigingin imaa giishin gegoo wii-izhichigeng imaa nakeya’ii.

O’owe onachigewin gegwe-izhichigemagak, ji-ganawenjigaadeg iwe bagwadakamig megwaa onashoweng aaniin waa-izhichigeng anokaajigaadeg iwe aki. Daabishkoo gegoo izhichigaadeg iwe aki, onjida igo neyaab ji-nishike-miinosemagak gegoo migoshkaajichigaadeg. Naanigoding igaye ji-naagajichigaadeg, maagizhaa igiwe gaa-naagajitoowaad oga-bimendaanaawaa.’ Giishin gwayak owe izhi naagajichigaadeg nawaj da-mino-ayaamagan iwe bagwadakamig. Zbigwa waabanong nakeya’ii imaa, nindagonaamin igaye ini akiin Anishinaabeg gaa-ondaadiziwaad imaa nakeya’ii.

Waabanong nakeya’ii zaaga’iganiing bezbigwewig izhi-ayaamagan. 16 ishkoniganan imaa ayaamaganoon. Mewinzhawekamig imaa onji ayaawag Anishinaabeg. 82,000 (km2) akiikaani diba’igan inigokwaa. Gagaana iwe aki gaawiin obimaadiziig ogii-bi-babaamendanzinaawaa’. Mii iwe bezbig bagwadakamig genandawaag omaa Kanada-akiing. Gaawiin igaye gii-migoshkaajichigaadesinon ji-onji-gashkichigeng imaa. Geget wiin nanaandok imaa daa-onji-gashkichigem, gaawiin dash babaamenjigaadesinon, mii iwe gwayak ji-onji-onashoweng gegoo wii-izhichigeng imaa nakeya’ii.

Daa-nishiwaanaajichigaade imaa bagwadakamig giishin bagidinigaadeg anoojigo ji-izhichigeng imaa gagwe-gashkichigeng gemaa ningoji anokaadeg bagwadakamig gegoo biigonagemagakipan. Zbigwa miinawaa ji-naagajichigaadeg igiwe jiigew gaa-daawaad, memindage anoojigo izhichigewaad. Ji-zakideg igaye noopimiing ji-naagajichigaadeg ji-metaakideg. Mii-sa ji-gagwe-gikenjigaadeg aaniin ji-izhi-naagajichigaadeg aabajichigaadeg noongom gikendaasowin.

Aazha gagaana gegoon bi-izhichigem ji-naagajichigaadeg bagwadakamig waabanong nakeya’ii. Gagwe-naagajichigaade ji-ganandawaag ji-gikenjigaadeg bebezbigwanon eta gaa-izhi-ayamagakin ini 18 akiinsan omaa Manitoba akiing. Edawaya’ii aazha bangii 14% dibach naagajichigaade daabishkoo ini akiikaanan Poplar zbigwa Nanowin akiikaanan. Owe akiikaan 7,400 (km) diba’igan inigokwaa akiikaan gaa-aabajitoowaad Azaadiiwiziibiing. Mii iwe ishkoniganan megwaa maajitoonaawaa’ gegoo wii-aabajitoowaad aki imaa gechiwaag. Megwaa dash onanda-gikendaanaawaa’ aaniin minik imaa aki aabadak zbigwa wegonen miinawaa ge-izhichigengiban ji-naagajichigaadeg awashime.

Manitoba aki bezbig onashowewin ji-naagajichigaadeg akiin, gii-onachigaade gegoon awiyag noonde-ikidowaad daa-bizindawaawag aaniin enendamowaad imaa onashowewining. Iwe onashowewin Memorandum of Understanding 1998 gaagii-jakibii’amowaad Manitoba Ogimaakaanag, Giiwedonong Ogimaakaanag izhibii’igaade ji-gikenjigaadeg aandi ini akiin naagajichigaadegin. Mii dash owe onashowewin da-gigisin imaa Onaakonigewining Broad Area Plan gaa-izhinikaadeg.

2002 gaa-akiwang, Azaadiiwiziibi, Baawingaashi, Mishibaawitigong zbigwa Miskoziibi, dago miinawaa Biigaanjigam, Ontario nakeya’ii ogii-jakibii’anaawaa’ onaakonigewin ji-maamawisinigin odishkoniganiwaan ji-maamawi-naagajichigaadenigin. Ezhi-naananigin ini ishkoniganan Anishinaabeg wii-maamawiiwag naagajitoowaad odakiwaan.. Mii dash, gii-gagwedwewag igiwe Anishinaabeg ji-giizhaakonigaadenig owe odizhichigewiniwaa imaa onji UNESCO World Natural and Cultural Heritage Site gaa-inindwaa ji-giginindwaa imaa gichi-onaakonigewining ji-manaajichigaadenig odakiwaa.

Mii owe gaye ezhichigeng imaa Canadian Boreal Initiative gaa-ijigaadeg. Owe izhichigewin gii-bi-aabajichigaade aabita noopimiing ji-naagajichigaadeg zbigwa ji-babaamenjigaadesinogin wendaadiziwinan imaa gechiwaag gaa-ondaadiziwaad. Gagwe-onachigaade ji-ganandawaag bagwadakamig, ji-migoshkaajichigaadesinog bekish ji-gashkitoowaad gechiwaag imaa eyaawaad memindage Anishinaabeg ji-gashkitoowaad ji-onashowaadamowaad odakiimiwaan.

Ji-giizhichigeng idash owe onashowewin, ji-gagiiginigaadeg akiinsan noopimiing ji-naagajichigaadegin. Ji-waniikesiing igaye iwe onashowewin Canadian Boreal Initiative gaa-ijigaadeg da-naagajichigaadewan gechiwaag

imaa eyaang zhigwa gaawiin da-babaamenjigaadesinon ondaadiziwinan. Gaawiin igaye da-babaamendaagosinon Anishinaabeg odoonashowewiniwaan 2002 gaagii-jakibii'amowaapan.

Iwe ikidowin "protection" (naagajichigewin) gaa-izhibii'igaadeg imaa Anishinaabe onashowewining, bakaan ikidoomagan imaa (Manitoba Parks Act) Manitoba akiing onashowewining. Niizhwewig izhi bakaanad. Nitam igo, gaawiin aanind ini akiin da-biiwaabikokesiim gemaa da-giishkada'igesim giishin Gichi-anishinaabeg nandawendanzigwaa. Gaawiin wiin Anishinaabeg bigo gegoo daa-izhichigewag apooshke gaye naagajitoowaad ezhichigaadenig odakiiwaan gechiwaag imaa endazhiikewaad.

Mii dash owe niizhwewig gegoon ikidoomagan iwe Protected gaa-izhising. Aanind inendamoo gaa-aabadak akiin ji-ondinigaadeg imaa gegoon ji-gashkichigeng, onashowewin bagidiniwemagan. Aanind miinawaa inendamoo akiiwan inaabadanoon gaagii-bi-inaabadakin, mii gaye ge-ani-izhi-aabadakin ani-niigaan. Ezhi-niizhingin ono ji-minosegin imaa nakeya'ii.

Gakina iwe bagwadakamig waabanong nakeya'ii zaaga'iganiing ji-inenjigaadeg naagajichigaadeg. Iniwon akiin daabishkoo akiikaanan, nawaj da-aako-naagajichigaadewan onaakonigewin aaniish da-bimosemagan. Mii-go gaye bezhigon ini akiin gaa-aabajichigaadesinogin. Zhigwa miinawaa bakaan da-inaakonigaadewan akiisan giishin ji-minosegiban. Akawe dash ji-ganawaabanjigaadeg aaniin waa-gagwe-izhichigeng ningoji bagwadakamig ji-migoshkaajichigaademagasinog iwe izhichigewin.

5.3 Ji-izhichigeng

5.3.1

Iwe gaa-inendamowaad Anishinaabeg ji-ikidoomagak iwe onaakonigewin, mii iwe ge-bimosajigaadeg. Giishin gegoo izhichigaadeg imaa aki daabishkoo giishka'aakweng, biiwaabikokeng gemaa mawadisigaadeg aki, da-bimosajigaade iwe onashowewin waabanong nakeya'ii zaaga'iganiing gaa-aabajitoowaad gaa-niigaanishkamowaad owe izhichigewin. Giishpin igaye gegoo bakaan wii-izhichigeng onjida ji-ganawaabanjigaadeg daga ge-migoshkaajichigemagak iwe izhichigewin. Onjida aaniish onashowewin ji-biminigaadeg. Mii-go bezhigon ge-izhisemagak daabishkoo iwe onaakonigewin 5 iniwe ishkonganan anishinaabeg gaagii-jakibii'amowaad ji-naagajichigaadegin akiin.

5.3.2

Manitoba Gichi-ogimaa ji-gagwe-gashki'aad Canada Gichi-ogimaan ji-dagobii'igaazowaad igiwe 5 Anishinaabeg imaa gichi-onashowewining odakiimiwaan ji-naagajichigaadenigin. Gigibii'igaadewan iniwen Anishinaabe ishkonganan imaa Atikaki zhigwa Caribou Provincial Park akiikaanan onaakonigewining.

5.3.3

Manitoba Gichi-ogimaa wii-gagwejimaa gaa-niigaanishkaminid owe izhichigewin wegonen dinoowikaan naagajichigewin nendawendamowaad imaa nakeya'ii akiing ji-dagonigaadenig daabishkoo imaa onaakonigewining wezhibii'igaadeg Order-in-Council mazina'iganing. Giishin idash gegoo inashoweng, mii iwe miinawaa onashowewin Boreal Forest Framework gaa-ijigaadeg ji-aabadakipan. Giishpin owe izhiseg, mii ono akiin maawaj ge-aako-naagajichigaadegin.

5.3.4

Anishinaabeg zhigwa Wiisaakodewininiwag waabanong nakeya'ii zaaga'iganiing gaa-ayaawaad ji-wiindamawindwaaban oada-gashitonaawaa' ji-aabajitoowaad akiikaan gaa-ayaamagakin daabishkoo atikaki, izhigaabawiwag owe.

5.3.5

Ji-gagwe-giizhaakonigeng zhemaag aandi imaa akiin ji-naagajichigaadegin onashowewining onji zhemaag idash daa-wiidabindiwag Anishinaabeg, Wiisaakodewininiwag zhigwa gechiwaag imaa nakeya'ii gaa-ayaawaad ji-giizhashowewewaad, wiinawaa aaniish gakina igi ji-nitamasindwaa.

5.3.6

Ji-biminizha' igaadeg onakonigewin zhemaag ji-giizhichigaadeg iniwen nishwaaswi akiinsan imaa akiikaani mazina'iganing Region 4b gaa-ategin. Mii dash ji-gigibii'igaadegin imaa onakonigewining ji-naagajichigaadegin. Zhigwa miinawaa, ji-aabadakipan owe onakonigewin ji-ganawaabanjigaadegin aanind ayagaasingin akiinsan ji-naagajichigaadegibaniin imaa Natural Region 4c gaa-ozhibii'igaadegin.

5.3.7

Manitoba Gichi-ogimaa da-wiidookaage, zhooniyaan igaye da-miigiwe ji-ganawaabanjigaadegin ini akiin imaa Natural Region 4b gaa-ategin owe ani-niizhwaak minik. Zhigwa da-wiindamaage aaniin waa-izhichiged omaa izhichigewining, daabishkoo odinashowewinan, aanapii gegoo ezhichigeng jibwaa giishkiseg owe gaa-biminaad zhooniyaan gichi-ogimaa.

5.3.8

Iwe Onashowewin 1998 Memorandum of Understanding gaagii-jakibii'amowaad Anishinaabeg zhigwa Manitoba Gichi-ogimaa aaniin waa-izhi-wiiji'idiwaad anokaadamowaad owe izhichigewin ji-aanjibii'amowaad iwe onashowewin mii ji-izhi-biminizha'amowaad.

5.3.9

Geyaabi niizh bakaan onashowewinan nandawenjigaadewan ji-giizhaakonigeng owe izhichigewin ji-naagajichigaadegin akiin. Bezhiig onakonigewin ji-naagajichigaadegin akiin gaagii-na'inindwaa anishinaabeg, gaagii-aabadakin akiin anishinaabewitwaang zhigwa ningoji gaagii-bi-gichi-inendaagwakin akiin, gaawiin idash ji-wiindamaageng aandi apiichaya'ii eyaamagakin. Gaawiin idash daa-migoshkaajichigaadesinoon. Gaawiin igaye daa-akiikaanensiwanzinon, da-michi-naagajichigaadewan. Zhigwa miinawaa ini akiin Anishinaabeg gaagii-bi-ondaadiziwaad. Bigo wiin ini akiin daa-ayaamaganon, biindig akiikaaning gemaa agwajaya'ii. Onakonigewining idash daa-dagonigaadewan ini akiin gaawii-naagajichigaadegin. Giishin idash nanaandok awiyag aabajitoowaad ningoji aki, da-andomaawag anishinaabeg ji-wiindamaagewaad wegonen ge-minosegiban ji-wiiji'iding aabajichigaadeg ningoji aki.

5.3.10

Giishin akiinsan akiikaaning eyaamagakin naagajichigaadesinogin, ji-onachigaadegin onakonigewinan jibwaa niizhwaaki izhiseg ji-giizhaakonigaadegin. Giishpin idash akiinsan eyaamagakin agwajaya'ii akiikaaning, jibwaa niizhwaaki ojijiseg ji-giizhaakonigaadegin ji-naagajichigaadegin. Gakina akiinsan ge-ganawaabanjigaadegin niigaan ji-inaabing aaniin ge-izhiwebizimmagakin ini akiin gegoon izhichigaadegin daabishkoo niigaan animeshkewaji-izhiwebak, zakideg, manijooshag ayaawaad aakoziwin, zhigwa gaye maamiinochigaadeg aki aaniin ge-izhisegiban. Aaniin miinawaa jiigaya'ii imaa akiin ge-izhisemagakin ji-gwaawaanjichigeng maagizhaa aabajichigaadeg iwe onakonigewin Fires Smart Program gaa-ayaamagak Jasper National Park. Jigagwejimindwaaban gechiwaag imaa gaa-ayaawaad gemaa gaa-anokiiwaad aaniin ezhi-ayaamagak bagwadakamig.

5.3.11

Manitoba Gichi-ogimaakaan ji-onatoopan aaniin ji-izhi-bimenjigaadegiban bagwadakamig. Daabishkoo ji-naanaagajichigaadegin ziibiin zhigwa jiigewan.

5.3.12

Manitoba Gichi-ogimaa ji-nepiimasaapan zhooniyaan zhigwa anokii'aagana', apooshke iniwedi aanind gaa-wiidookaagewaad daabishkoo gichi-ogimaa, wendaadiziwaad ogimaag, zhigwa igiwe gaa-naagajitoowaad bagwadakamig, ji-giizhitoowaad Anishinaabeg akiikaani mazina'igan ozhibii'igaadeg aandi imaa bagwadakamig aayaabajitoowaad ji-ondaadiziwaad.

5.3.13.

Ji-gikenjigaadeg, jibwaa owe izhichigewin gagetin maajichigaadeg, onjida ji-zagakibii'igaadeg gakina gegoon ge-gichi-aabadak onachigaadeg owe onakonigewin ji-dazhiikigaadeg owe izhichigewin daabishkoo Manitoba Gichi-ogimaa ji-wiidookaaged ji-giizhi-zagakibii'igeng waabanong nakeya'ii zaaga'iganiing ji-maadanokaajigaadenig zhemaag.

6. Niigaan Ji-izhichigeng

6.1 Anokii'aaganag: Zagakibii'igaadeg Ekidong zhigwa Ji-izhichigengiban

Ji-zagakibii'amowaad anokii'aaganag wiidanokiimaawaad gaa-niigaanishkaminid wegonen ekidong ji-izhichigengiban anokaadeg owe izhichigewin ogii-zanagi'igonaawaa' memindage gagiiginamowaad wegonen niigaan ji-ganawaabanjigaadegin.

Anishinaabewi-anokii'aaganag Protocol Working Group gii-inasaawag ji-onashowaadamowaad onaakonigewin ji-aabajichigaadeg jibwaa giizhaakonigaadeg owe izhichigewin.

Niswewig dashiwag anokii'aaganag gii-onasaawag ji-giigidootamaagewaad owe dino izhichigewin. Bebezhig nakeya'ii omaa Manitoba akiing gii-asaawag. Giiwedonong, zhaawanong zhigwa naawaya'ii Manitoba gii-ayasaawag ogowe anokii'aaganag. Ozhibii'igaademagan owe wiindamaagewin imaa 4 zhigwa 5 baakiiginaning Executive Summary of the East Side of Lake Winnipeg – Broad Area Planning Initiative: Phase 1 Final Report gaa-izhinikaadeg. Endashiwaad igiwe anokii'aaganag, awiyag gaa-niigaanishkamowaad owe izhichigewin, gaawiin igaye awashime 12 gii-dashisiwag, ogii-wiidabimaawaa' zagaswe'idinid. Mii dash owe izhichigeng, gakina gegoo gii-ganawaabanjigaade. Onjida okobiwaad ji-giginamowaad Anishinaabe Agwi'idiwin zhigwa Gechiwaag Bagwadakamig Gikendaasowin.

Zhigwa miinawaa ani-naanwewig gii-onasaawag anokii'aaganag, ji-niigaanishkamowaad ini niswewig anokii'aagana' odizhichigewiniwaani. Wiinawaa ogowe ogii-onatoonaawaa' onashowewin ji-wiiji'igowaad niswewig anokii'aaganag odanokiiwiniwaang. Ogii-onatoonaawaa' gaye aaniin ge-izhi-maajichigaadeg owe waabanong nakeya'ii zaaga'iganiing izhichigewin. Zhigwa ishkwaaj ji-zagakibii'amowaad aaniin ekidong imaa nakeya'ii Manitoba akiing gaa-dananokiiwaad.

Ji-gitenjigaadeg owe onashowewin gakina aaniish ogii-maamawikaadaanaawaa' gaa-niigaanishkamowaad owe izhichigewin daabishkoo Anishinaabewi-ogimaakaanag, Gaa-niigaanabiitamowaad owe izhichigewin zhigwa bebakaan gaa-wiidookaagewaad.

6.2 Anishinaabeg Odoonachigewiniwaan

Gidanokiiwin

“Gaa-niigaanishkamowaad Waabanong Nakeya'ii Zaaga'iganiing Izhichigewin oga-ganawaabandaanaawaan aaniin ezhichigewaad imaa gechiwaag gaa-ayaawaad ji-wiiji'aawaad.”

“Gaa-niigaanishkamowaad ji-wiindamaagewaad aaniin maawanj ge-izhi-minosegiban ji-wiiji'idiwaapan niizhookamowaad gegoo izhichigewin imaa nakeya'ii zaaga'iganiing Lake Winnipeg gaa-ijigaadeg.”

Azaadiiwiziibi, Makadewiziibiins zhigwa Waanibigaaw anishinaabeg megwaa onashowewag aaniin waa-izhichigaadamowaad gaa-ondaadiziwaad odakiimiwaan. Gewiinawaa Omemewiziibiing zhigwa Island Lake Tribal Council Naakawewiniwag mii waa-izhichigewaad. Mii-sago gaye Manigotagan zhigwa Wasagamack waa-gagwe-izhichigewaad. Aanagii-ikidowaad ogowe Anishinaabeg, gaamashi gegoo izhichigesiiwag ji-maadakamigiziwaad.

Bakaan gegoon miinawaa ji-ganawaabanjigaadegin wezhibii'igaadesinogin imaa onaakonigewining. Daabishkoo:

- nawaj ani-onzaamiinowag anishinaabeg imaa nakeya'ii zhigwa gaawiin ningoji ji-onji-gashkichigeng zanagan ji-mikigaadeg;

- ❑ awiyag bakaan odibendaanan anokiiwinan imaa nakeya'ii, bakaan ezhi-izhaad zhooniya, zhigwa maagizhaa zanaganidog ji-ondinind zhooniyaan gegoo ji-maajichigeng gemaa gaye ondinigaadegin onashowewi-mazina'iganan;
- ❑ zanaganoon ji-maajichigaadegin anokiiwinan onzaam mazina'iganan ji-ondinigaadegin miinawaa aakogindewan daabishkoo ji-wanii'igeng onzaam akoginde gaawiin igaye bebakaan gegoon gigashkitoosin ji-izhichigeyamban ayaaman;
- ❑ onzaam bangiinadon ji-onachigaadegin anokiiwinan gemaa ji-mikigaadegin anokiiwinan; zhigwa
- ❑ gaawiin daabishkoo gichi-ogimaa onoonde-wiidanokiimaasii' gechiwaag imaa eyaanid apooshke niibowa anokiiwin imaa daa-ayaamagan ji-ondaadizingiban.

Owe onaakonigewin Memorandum of Understanding gaa-ijigaadeg da-wiiji'iwesemagan iwe onashowewin Protocols of Agreement gaa-izhinkaadeg ji-wiidanokiindiwaad Anishinaabeg, Wiisaakodewiniwag zhigwa Manitoba Gichi-ogimaa anokaadamowaad iwe Waabanong Nakeya'ii Zaaga'iganiing izhichigewin aaniin ge-izhichigaadamowaad imaa bagwadakamig.

6.2 Ji-izhichigeng

6.2.1

Gakina Anishinaabewi-ogimaakaaniw, Wiisaakodewiniwag eyaawaad imaa waabanong nakeya'ii zaaga'iganiing zhigwa giiwedonong anishinaabeg bebakaan da-izhi-wiiji'aawag apooshke zhooniyaan da-izhi-wiiji'aawag onatoowaad owe onashowewin. Memindage onashowaadamowaad odishkoniganiwaan zhigwa gechiwaag odakiimiwaan aaniin ge-minosegiban jibwaa gegoo izhichigaadeg imaa bagwadakamig.

6.2.2

Jibwaa gegoo izhichigaadeg aki akawe ji-onashoweng ji-giizhaakonigeng aaniin ji-izhichigengiban, zhigwa gechiwaag imaa eyaawaad ji-wiidabingewaad, ji-miinindwaaban anokiiwin giishin gegoo oshki-maajichigeng imaa nakeya'ii.

6.2.3

Manitoba Gichi-ogimaa da-izhichige ji-gashkitoonid imaa gechiwaag eyaanid ji-wiiji'iwewaad gegoo izhichigaadenig odakiimaan. Zhigwa igiwe geshkitoosigwaa, da-miinaawag gikinoo'amaadiwin gewinawaa ji-gashkitoowaad ji-wiidookaagewaad.

6.2.4

Da-zagakibii'igaade wegonenan anokiiwinan ge-ani-ayaamagakin imaa nakeya'ii, zhigwa wegonen ji-gikendamaban ji-ondinaman imaa anokiiwin. Da-onachigaade ji-gikinoo'amawindwaa awiyag ji-gashkitoowaad ji-zagakibii'igewaad bimendamowaad anokiiwin. Aanind miinawaa anokiiwinan ji-gikinoo'amaading daa-onachigaadewan daabishkoo aatawe'igewin, dazhiikodaadiwin, naniizaanakin gegoo dazhiikaman, gikinoo'amaagewin, ashwiwin, mawadisigaadeg aki, bimaaji'owin zhigwa bagosendamowini-mazina'iganan.

6.2.5

Ji-onachigaadeg gikinoo'amaadiwinan mazina'iganan ji-gashkichigeng daabishkoo bagwadakamig ji-anokiiyan, Manisewin, Biiwaabikokewin zhigwa noojigiigoo'iwewin.

6.2.6

Gechiwaag ji-ayaamagakin anokiiwinan zhigwa gechiwaag ji-dibenjigaadegin. Gechiwaag igaye ji-ondizingiban giishin gashkichigeng imaa onji gegoo inaabajichigaadeg bagwadakamig.

6.2.7

Manitoba Gichi-ogimaa ji-wiidookaaged giishin awiyag wii-wiidanokiindiwaad ji-ondiziwaad gechiwaag imaa eyaawaad. Giishin igaye gegoo izhichigeng imaa gechiwaag, gewiinawaa imaa gechiwaag eyaawaad ji-onidiziwaapan.

6.2.8

Anishinaabeg, Wiisaakodewininiwag zhigwa gechiwaag imaa ogimaakaanag ji-giigidootamawindwaa giishin gegoo wii-izhichigaadeg iwe bagwadakamig. Gewiinawaa ji-wiidabingewaad gegoo inashowaadeg iwe bagwadakamig.

6.2.9

Manitoba Gichi-ogimaa ji-wiidanokiimaad gaa-niigaanishkaminid owe izhichigewin zhigwa Anishinaabe' ji-onatoowaad aaniin ji-izhi-naagajitoowaad gegoon bagwadakamig wendaadizing jibwaa niswaaki ojijiseg. Awiyag ji-onasindwaa jibwaa niswaaki izhiseg. Awiya ge-izhigaabawid oga-biminizha' aan Anishinaabe Izhichigewin zhigwa oga-biminizha' aan iwe onaakonigewin Great Lakes Indian Fish and Wildlife Commission gaa-ijigaadeg.

6.2.10

Manitoba Gichi-ogimaa oga-gagwejimaa wiisaakodewininiwa' zhigwa gechiwaag imaa eyaanid waabanong nakeya'ii zaaga'iganiing aaniin wiinawaa ge-izhi-wiidookaagewaapan imaa izhichigewining.

6.3 Noopimiing Ondaadiziwinan

Gidanokiiwin

“Gaa-niigaanishkamowaad da-wiindamaagewag aaniin ji-izhi-naagajichigaadeg bagwadakamig, aaniin ge-ani-izhi-naanaagajichigaadeg ani-niigaan, aaniin igaye ge-izhi-minoseg ji-ani-ondaadizing imaa, gaawiin idash eta owe izhichigeng:

- ❑ ji-migoshkaajichigaadesinog bagwadakamig;
- ❑ ataasowin;
- ❑ mitigoowaninog gegoo noopimiing onji;
- ❑ mawadisigaadeg aki; zhigwa
- ❑ ge-naabisegin gegoon odaapinigaadeg noopimiing.

Gaawiin ji-bagidinigaadeg oshki-giishkada'igewin gaa-izhising iwe onaakonigewin Manitoba gaa-naagajitoowaad bagwadakamig (Manitoba Conservation) gaa-biminizha'amowaad. Mii imaa onashowewi-mazina'iganing Forest Management #1 zhigwa minik gaa-bi-giishkada'igeng imaa odaanaang Integrated Wood Supply #1 gaa-bi-diba'ogaadeg. Gaawiin gegoo da-meshkwajichigesim minik ji-giizhichigaadeg owe izhichigewin.

Gegoon wendinigaadeg noopimiing gichi-inendaagwanoon. Gaa-giishka'aakweng gichi-ondizim imaa onji. Gaawiin idash misan imaa ondinigaadesinoon, misakamig gegoon bemaadakin ondaaji'owanoon imaa onji (waabandan Chapter 5.3). Odaakwaabandaanaawaa' iwe bagwadakamig waabanong nakeya'ii zaaga'iganiing Anishinaabeg zhigwa wiisaakodewininiwag mewinzha aaniish imaa gii-bi-onji-ayaawag. Mii gaye imaa gaa-bi-ondaadiziwaad omijimiwaa, odaadaawaaganiwaa' mashkikiin zhigwa aayaabajitoowaad odizhitwaawiniwaang. Giishin gegoo wii-izhichigeng imaa nakeya'ii onjida ji-waniikesiing owe gaa-danaabajichigaadeg iwe bagwadakamig.

Tembec Industries Inc. niigaaniwag giishka'aakwewaad imaa noopimiing. Odayaanaawaa' mazina'igan bagidinindwaa 20 daswaaki imaa ji-anokiiwaad. Endaso-midaaswaaki meshkwajibii'igewag. Odaa-gashkitoonaawaa' dash ningoji igo midaaswaaki ako niishtana daswaaki ji-anokiiwaad imaa.

Mii dash igiwe bagosenimaawag neyaab ji-gitigewaad mitigoog' gaa-gawida'aawaad. Zhigwa Manitoba Gichi-ogimaa oniigaanishkaan ji-adaawaageng igi mitigoog wedaapinindwaa waabanong zhigwa ningaabii'anong zaaga'iganiing. Bagidiniwem imaa onaakonigewining midaaswaaki ji-danakamigiziwaad imaa. Giishin bakaan wii-anokaadamowaa bagwadakamig onjida ji-onashoweng jibwaa gegoo izhichigeng.

Giiwediniwem imaa onji nakeya'ii 53rd parallel gikinawaaj, nisimidana daswaaki gii-bi-giishka'aakwem. Gaawiin idash zagakibii'igaadesinon wegonen dinoowikaanag mitigoog, aaniin minik, mii zhigwa zanagan ji-naagajichigaadeg noopimiing megwaa owe inanokiing.

Niibowa aaniish awiyag odaabajitoonaawaa' iwe noopimiing, mii nawaj igo zanagan ji-ganawaabanjigaadeg ayizhichigaadeg noopimiing. Gakina gegoo wiiijiwaaganidiwan daabishkoo enanokiing noopimiing, wendaadizing gechiwaag, eni-meshkwajisewaad imaa eyaawaad zhigwa bimiwizhiwewin. Giishpin ozhichigaadeg miikana bigo izhiwebak ji-aabadak giiwediniwem Waanibigaaw izhi Miskoziibiing nawaj niibowa anokiiwinan daa-ayaamaganon ikidom.

Gikenjigaadeg aaniin epiitendaagwakin gegoon bagwadakamig daa-wiiji'iwemagan. Nanaandok daa-izhichigem ji-gikenjigaadeg aaniin ji-izhi-dibawagenjigaadeg gegoo bagwadakamig onji daabishkoo igiwe Forest Stewardship Council or The World Wildlife Fund – Canada gaa-izhi-dadiba'agewaad.

Neniizaanag ji-asho'igaadeg, mii iwe ji-gichi-zakideg noopimiing giishin onzaam baateg niibing. Nawaj igaye da-izhise owe giishin niibowa awiyag babaami-ayaawaad imaa nakeya'ii.

Gechiwaag imaa gaa-ayaawaad gaan gegoo odinendanziinaawaa' ji-giishka'aakweng imaa debinaak idash neyaab gitigeng, wiindamawindwaa aaniin enakamigizing zhigwa gewiinawaa gegoo ji-ondiziwaapan imaa onji.

6.3 Ji-izhichigeng

6.3.1

Ji-gagwe-biminizha'igaadeg onaakonigewin giishin awiya gegoo wii-izhichigaadang waabanong nakeya'ii zaaga'iganiing bagwadakamig.

6.3.2

Giishin giitwaam wii-ondinigaadeg iwe mazina'igan FML #1 gaa-ijigaadeg, onjida Anishinaabewi-ogimaakaanag ji-ganawaabandamowaad. Giishin idash wiin bakaan mazina'igan odanokiiwaad daabishkoo iwe Integrated Wood Supply #1 gaa-ijigaadeg, bigo Anishinaabeg zhigwa wiisaakodewiniwag waabanong nakeya'ii eyaawaad ji-wiindamawindwaa.

6.3.3

Onjida gwaawaanjichigeng ji-ondiziwaad Anishinaabeg zhigwa wiisaakodewiniwag gechiwaag imaa eyaawaad giishpin mitigoog odaapinindwaa imaa onji.

6.3.4

Ji-zagakibii'igaadeg aandi endazhi-giishka'aakweng wegonen igaye ezhichigaadeg noopimiing imaa nakeya'ii jibwaa maajichigaadeg iwe waabanong nakeya'ii zaaga'iganiing izhichigewin.

6.3.5

Ji-diba'igaadeg bagwadakamig aaniin minik ge-ondizipan awiya aabajichigaadeg iwe onashowewin High Conservation Value Forest Method gaa-izhinikaadeg. Giishin izhichigeng, daa-gikenjigaade wegonenan ji-ganawaabanjigaadegin daabishkoo ezhi-ayaamagak bagwadakamig, aaniin ge-izhi-migoshkaajichigemagak gegoo izhichigaadeg, omino-ayaawiniwaa imaa eyaawaad, Anishinaabe Agwi'idiwin zhigwa aaniin ge-izhiwebiziwaad bemaadiziwaad. Maagizhaa Whitefeather onashowewin Ontario onji daa-aabajichigaade ji-aayaabajitoowaapan gechiwaag imaa gaa-daawaad.

6.3.6

Ji-wijiwindwaa igiwe imaa eyaawaad giishin gegoo anokiiwin noonde-maajitoowaad. Giishin awiya ondakaanezisig imaa aabajitood bagwadakamig, da-izhichigem ji-anokii'aawaad imaa eyaanid. Maagizhaa gaye daa-adaawaagem mitigoog imaa gechiwaag, maagizhaa gaye daa-meshkwadoonamaadim gegowan. Ji-ganawaabanjigaadegiban iwe.

6.3.7

Maagizhaa gaye da-ganawaabanjigaade bebakaan ji-inaabadakipan bagwadakamig daabishkoo ataasong gegoon, adaawaageng gegoo wenjiseg noopimiing ji-ondaadizingiban. Bebakaan gegoon ji-ganawaabanjigaadeg ge-izhi-minosemagak noopimiing aabajichigaadeg.

6.3.8

Gaawiin mayagiziwaad mitigoog imaa ji-aabajiwindwaa, maagizhaa daa-migoshkaajitoonaawaa' gegoon imaa netaawigingin.

6.3.9

Jibwaa miikanaakeng imaa nakeya'ii, ji-wiindamawindwaaban Anishinaabeg, wiisaakodewininiwag zhidwa awiyag imaa endananokiiwaad.

6.3.10

Giishin awiya gegoo wii-izhichiged imaa bagwadakamig, akawe ji-andooshkang daga ji-migoshkaajitoosig bakaan anokiiwinan gemaa inakamigiziwinan daabishkoo wani'igeng, manoominikeng, noojigiigoo'iweng, gemaa gaye bakaan gegoo inakamigiziwin. Manitoba Gichi-ogimaa oga-wiidanokiimaa' gaa-niigaanishkaminid owe izhichigewin ji-gikendamowaad aazha imaa endananokiiwaad awiya bakaan wii-maajitood gegoo imaa nakeya'ii. Giishpin nayendanzigwaa awiya bakaan gegoo izhichiged, awiya da-onasaa ji-maamiinochiged.

6.4 Bimiwizhiwewin

Gidanokiiwin

Gaa-niigaanishkamowaad oga-ganawaabandaanaawaa' gaawii-miikanaakeng izhi Miskoziibiing. Da-wiindamaagewag wegonen gaa-mikamowaad.

August 1999, Gichi-ogimaakaan Niigaaniid Manitoba Bimiwizhiwewin, ogii-mazina'ige'aa Dillon Consulting Limited gaa-inindwaa ji-ganawaabandaminid aaniin ji-izhichigengiban aaniin igaye ge-izhisegiban miikanaakeng waabanong nakeya'ii zaaga'iganiing. Gii-anookiim daga aaniin ge-inagindegiban zhidwa daa-minose miikana ji-ayaamagakipan imaa nakeya'ii.

Ishkwaa onashowewaad, gaagii-mazina'igewindwaa Dillon Consulting gaa-inindwaa, ogii-ozhibii'aanaawaa' mazina'igan East Side of Lake Winnipeg All Weather Road Justification and Scoping Study (August, 2000) gii-izhinikaadeni. Niizh miikanawan bebakaan ondamongin gii-ganawaabanjigaadewan. Bezhiig miikana gakina imaa ishkoniganan waabanong nakeya'ii odaa-aabajitoonaawaa' Manigotagan idash daa-ondamon. Zhidwa miinawaa bezhiig, giiwedining ishkoniganan odaa-aabajitoonaawaa'. Ningaabii'anong Norway House/Cross Lake daa-ondamon.

Niibowa anishinaabeg odaa-gichi-wiji'igonaawaa' miikanaakeng imaa nakeya'ii, gaawiin iwe minik daa-jaaginigesiiwag aayaazhoog ayizhaawaad.

February 2001, bakaan awiya ogii-ganawaabandaan iwe mazina'igan, Paskanake Project Management izhinikaazowag, gaawiin gakina imaa gechiwaag eyaawaad inendanziwag ji-gichi-wiji'igowaapan miikanaakeng imaa nakeya'ii. Bangii imaa ogii-onzaamaajimowag.

2001, zhigwa miinawaa igiwe Dillon Consulting gaa-inindwaa ogii-ozhibii' aanaawaa' mazina'igan Manitoba Bimiwizhiwewin Work Plan to Develop an All-Weather Road Network for the East Side of Lake Winnipeg – Final Report (Dillon Consulting Limited and N.D. Lea, October, 2001) ogii-izhinikaadaanaawaa'. Ogii-ozhibii' aanaawaa aaniin ge-izhi-maajichigaadegiban miikana imaa nakeya'ii ji-aabajitoowaad imaa gechiwaag eyaawaad.

Bebakaan daa-izhise miikanaakeng imaa, ningoji daa-minose, ningoji bakaan idash daa-maazhise. Geget wiin nandawenjigaade ji-maamiinochigaadeg iwe miikana gaa-inamong Miskoziibiing Rice River Road gaa-izhinikaadeg. Geget wiin niibowa awiyag onandawendaanaawaa' miikana giiwedining ji-inamong Omemewiziibiing. Omemewiziibiing ogimaakaan zhigwa aginjiganag ogii-ozhibii' amawaawaan July, 30, 2002 Phil Fontaine-an, iwapii gaagii-niigaanabiitang iwe izhichigewin, wiindamawaawaad zhemaag gii-noonde-miikanaachigewaad odishkoniganiwaang izhi.

6.4 Ji-izhichigeng

6.4.1

Manitoba Bimiwizhiwewin bagidinaawag ji-maamiinotoowaad Rice River gaa-ijigaadeg Miskoziibiing gaa-inamong giishpin idash:

- ❑ Manitoba Bimiwizhiwewin wiidabimaawaad Anishinaabe' zhigwa wiisaakodewininiwa' imaa eyaanid ji-ganawaabandamowaad bebakaan miikanawan imaa nakeya'ii
- ❑ akawe weweni ganawaabanjigaadegin gegoo izhichigewin ji-migoshkaajichigemagasinog jibwaa giizhaakonigeng;
- ❑ aabajichigaadeg iwe onashowewin wezhibii' igaadeg imaa 5.1, zhigwa ge-izhiseg Anishinaabe Agwi'idiwin zhigwa gaye ge-aanike-meshkwajichigemagak; zhigwa
- ❑ ji-mikigaadeg aandi aazhawa' agamiing, ji-wiimbaashkigaadeg, zhigwa ji-miikanaakeng jii-gewang ji-migoshkaajichigesinog miikanaachigeng.

6.4.2

Manitoba Bimiwizhiwewin ji-maada' oonaawaad gaa-niigaanishkaminid mazina'igan gaagii-zagakibii' amowaad UMA gaa-niigaaniiwaad iwe inanokiiwin ji-ganawaabanjigaadenig.

6.4.3

Manitoba Bimiwizhiwewin ji-aandashowewaad ji-maamiinotoowaad iwe Rice River Road miikana ji-inamotoowaad Omemewiziibiing izhi.

6.4.4

Manitoba Bimiwizhiwewin ji-ondinamowaad mazina'igan Manitoba Clean Environment Commission gaa-inindwaa ogimaag onji ji-maamiinotoowaad Rice River miikana.

Ani-niizhwewig onowen onashowewinan Manitoba Bimiwizhiwewin ji-miikanaakewaad waabanong nakeya'ii zaaga'iganiing. Mii ezhibii' igaadeg iwe onashowewi-mazina'igan Work Plan to Develop an All-Weather Road Network for the East Side of Lake Winnipeg – Final Report (Dillon, 2001) gaa-ijigaadeg:

6.4.5

Manitoba Bimiwizhiwewin ji-ganawaabandamowaad mazina'igan Regional Transportation Network Study izhinikaadenig daga bakaan ge-izhi-babaami-ayaangiban imaa nakeya'ii daabishkoo biiwaabikomiikana, jiimaan, aazhoganan gemaa gaye ishpaasijiganan ishkwa miikanaakewaad.

6.4.6

Ji-ganawaabanjigaadeg bakaan ningoji bagwadakamigong gaagii-miikanaakeng aaniin gaa-izhi-minoseg gemaa aaniin gaa-izhi-maazhiseg.

6.4.7

Manitoba Bimiwizhiwewin ji-ganawaabandamowaad zhigwa ji-zagakibii'amowaad aaniin gakina gegoo ge-izhisegiban miikanaakeng imaa nakeya'ii. Daabishkoo imaa gaagii-ozhibii'igaadeg 5.1.13, zagakibii'igewaad onjida ji-ganawaabandamowaad Anishinaabe Agwi'idiwin daga aaniin ge-izhisemagakin. Onjida gaye ji-ozhibii'igaadeg bakaan ji-izhi-babaami-ayaangiban ishkwa miikanaakewaad, ishkwa gaye giizhitoowaad iwe Rice River gaa-izhinikaadeg.

6.4.8

Gaa-niigaanishkamowaad ji-ganawaabandamowaad aandi ji-inakanaagengiban jibwaa giizhashowewaad. Manitoba Bimiwizhiwewin ji-miinaawaad Clean Environment Commission gaa-inindwaa ozagakibii'igewiniwaa jibwaa giizhashowewaad aandi ji-inakanaakeng.

6.4.9

Jibwaa maadakamigizing, bigo izhinaagwak miikana, Manitoba Bimiwizhiwewin zhigwa bakaan omiikanaakeg ji-onatoowaad aaniin waa-izhi-bimendamowaad miikanawan imaa nakeya'ii. Bebakaan oga-izhi-bimendaanaawaan daabishkoo aandi ge-inamong, da-migoshkaajichigemagan ina, awiyag ge-noonde-gibitinamowaad owe izhichigewin gemaa awenenag ge-aabajitoowaapan giizhichigaadeg. Onjidag ji-bizindawindwaa gakina awiya imaa nakeya'ii giishin gegoo inendamowaad owe izhichigewin.

6.4.10

Ji-ganawaabanjigaadeg aaniin ge-izhiseg bagwadakamig giishin miikanaakeng zhigwa dawaakwada'igeng ji-waasiganikeng.

6.4.11

Geyaabi da-aazhawaa'ojigem waabanong nakeya'ii zaaga'iganiing minik bakaan gegoo aanjichigeng bekish dash wiin maagizhaa daa-mazina'ige'aa awiya ji-inanokiipan.

6.4.12

Ji-ganawaabanjigaadeg aaniin ge-izhiseg giishpin giishkinigaadeg iwe gaa-aazhawii'idaasong waabanong zhigwa ningaabii'anong zaaga'iganiing zhigwa miinawaa aaniin minik ge-wanichigewaad iwe gaa-inanokiiwaad.

6.4.13

Gaa-maamiinochigaadeg booniwi-miikanawan, gemaa ozhichigaadegin booniwi-miikanawan wiin gichi-ogimaa wiin iwe oga-bimendaan gaawiin wiin igiwe gaa-miikanaachigewaad.

6.4.14

Jibwaa onachigaadeg miikana gabeya'ii ji-aabadak, zhigwa gaye gechiwaag imaa eyaawaad wiidookaagewaad, ji-ganawaabanjigaadeg ji-migoshkaaji'aasiwindwaa bemaadiziwaad imaa bagwadakamig daabishkoo miikanawan webinigewakiing enamongin.

6.4.15

Giishpin gegoo onachigaadeg ji-bimishkaad awiya, akawe ji-ganawaabanjigaadeg dagananaa ji-migoshkaaji'iwemagak daabishkoo igiwe gaa-wanii'igewaad, gaa-manoominikewaad, gaa-noojigiigoo'iwewaad gemaa igi bakaan gegoo enaabajitoowaad bagwadakamig. Manitoba Gichi-ogimaa ji-wiidanokiimaad ini gaa-niigaanishkaminid ji-gikendamoonawaad iniwe anokiiwi-mazina'iganan gaa-dibendamowaad awenenag

aayaabajitoowaad ayanokiiwaad bagwadakamig giishin idash gegoo onjiikodaadiwaad awiya da-izhinizha'waa ji-wiidabinged ji-gwayakochiged.

6.5 Mawadisigaadeg Aki zhigwa Maminwaagaajichigewin

Gidanokiiwin

Gaa-niigaanishkamowaad ji-ganawaabandamowaad gaa-mawadisigaadeg aki zhigwa awiyag gaa-bi-maminwaagaajichigewaad imaa bagwadakamigong.

Niibowa awiya ogikendaan gagaana awiya daa-bi-izhaawag ji-bi-ayayaawaad bagwadakamig. Nawaj idash niibowa awiyag daa-bi'izhaawag ji-bi-maminwakamigiziwaad bagwadakamig ayaawaad. Niibowa ayaamaganoon aandi ge-gabeshing daabishkoo gaa-gabeshiwaad noojigiigoo'iweg zhigwa mitigoo-waakaa'iganan gaa-ayaamagakin zhaawanong nakey'ii imaa zaaga'iganiing. Nawaj idash bangiinanoon ge-gabeshingiban giiwedining nakeya'ii Poplar zhigwa Nanowin ziibiing akiikaaning. Gaa-ozhigewaad imaa mazina'iganan ogii-ondinaanaawaan imaa onji Licensing Advisory Committee gaa-ijigaadeg. Inendaam aapiji gechiwaag imaa eyaawaad ozanagitoonaawaa' awiyan ji-miiniminid mazina'igan ji-anokiinid imaa nakeya'ii.

Gaamashi weweni ogii-onji-ganawaabandanzinaawaa' gaa-niigaanishkamowaad iwe gaa-mawadisigaadeg bagwadakamig. Geyaabi iwe ji-ganawaabandamowaad. Megwaa dash wiin inendaam geyaabi ji-anokaadeg bekish onatoowaad awashime awiyag ji-bi'izhaawaad zhigwa gechiwaag imaa eyaawaad ji-ondiziwaapan. Nawaj niibowa awiyag daa-bi-izhaawag giishin miikanaachigeng imaa nakeya'ii. Nawaj igaye gechiwaag daa-ondizim giishpin miikanaachigeng. Gaawiin idash wiin zaabenjigaadesinooon awashime mitigoo-waakaa'iganan ji-ozhichigaadegin imaa nakeya'ii onzaam aaniish daa-daatagaadendaagwan ji-onji-naagajichigaadeg dago daa-aakoginde ji-izhichigengiban.

6.5 Ji-izhichigeng

6.5.1

Giishin onachigaadeg gegoon gaa-mawadishiwewaad ge-aabajitoowaapan, bigo giginamowaad bakaan gegoon odoonashowewiniwaang daabishkoo miikanaachigewin. Nawaj idash daa-minose giishpin maamiinochigeng aaniin ge-izhi-maamawi-wiidookodaading dazhinjigaadegin ono. Nawaj owe weweni ji-ganawaabanjigaadeg giishin iwe onashowewin Aboriginal Tourism Strategy gaa-ijigaadeg maadanokiimagak Anishinaabeg gegoon gaawii-onatoowaad imaa nakeya'ii.

6.5.2

Ji-onachigaadeg aaniin ge-izhi-onashowaadeg owe onachigaadeg gegooan igiwe onji gaawii-mawadisidamowaad iwe bagwadakamig. Onjida gaye gichi-ogimaa ji-wiidabimaad Anishinaabe' zhigwa gechiwaag imaa eyaanid. Igiwe mazina'iganan gaa-miigiwewaad Advisory Committee ji-gagwejiimaawaad gechiwaag imaa wenaakonigenid. Onjida aaniish ji-wiindamawindwaa awiyag miinaasiwindwaa mazina'iganan ji-anokiiwaad imaa nakeya'ii. Bigo gaye ji-ayaamagak awiya ji-maamiinochigepan awiyag onjigidaazowaad gegoo iwe onji.

6.5.3

Daa-minose ji-ondizingiban giishin awashime gegoo izhichigeng nawaj geyaabi awiyag izhaawaad imaa nakeya'ii, gaawiin idash ji-babaamenjigaadesinogin andawenjigewin zhigwa noojigiigoo'iwewin. Onjida dash ji-izhichigeng gechiwaag imaa eyaawaad ji-anokiiwindwaaban giishin izhiseg.

6.5.4

Giishin awiyag gechiwaag imaa niigaan ji-ani-ondiziwaapan odanokiiwiniwaang, ji-gigising imaa onashowewining gaa-miigiweng mazina'iganan ji-anokiing imaa nakeya'ii. Gikinoo'amawindwaa awiyga ji-miinindwaaban mazina'igan aaniin ezhigaabawiwaad.

6.5.5

Ji-gikenimoonindwaa Anishinaabeg, wiisaakodewininiwag zhigwa gechiwaag imaa eyaawaad aaniin ezhichigeng ji-banizisigwaa gegoo izhichigeng imaa nakeya'ii.

6.5.6

Naniizaanendaagwan giishin awashime mitigoo-waakaa'iganan ozhichigaadegin imaa nakeya'ii, aapiji gwayak ji-ganawaabanjigaadeg aaniin ge-izhisegiban onakichigaadegin. Gaawiin wiin gegoo daa-izhi-maazhisesinon inakanaakeng mitigoo-waakaa'iganan imaa megwaa bedakidegin.

6.5.7

Manitoba Gichi-ogimaa ji-wiidookaaged onashowaadenig Anishinaabeg gaa-mawadisigaadenig odakiim.

6.5.8

Manitoba Gichi-ogimaa ji-wiidookaaged onasindwaa Anishinaabeg ji-naagajitoowaad owe gaa-mawadisigaadenig odakiimiwaan. Manitoba First Nations Tourism Group da-izhinikaazowag. Gichi-ogimaa dash oga-wiiji'aa' zhooniyaan asaad ji-izhichigenig. Mii dash anishinaabeg oga-bimendaanaawaa' wegonen ge-izhichigeng gechiwaag imaa eyaawaad zhigwa miinawaa gewiinawaa ji-ondiziwaapan imaa onji izhichigewining. Onjida gaye ji-anokiiwindwaa gemaa ji-gikinoo'amawindwaa giishin oshki-izhichigewin imaa onachigaadeg gechiwaag imaa eyaawaad.

6.5.9

Giishpin gegoo onachigaadeg ji-mawadisigaadeg bagwadakamig akawe ji-ganawaabanjigaadeg dagasanaa ji-migoshkaaji'iwemagak daabishkoo igiwe gaa-wanii'igewaad, gaa-manoominikewaad, gaa-noojigiigoo'iwewaad gemaa igi bakaan gegoo enabajitoowaad bagwadakamig. Manitoba Gichi-ogimaa ji-wiidanokiimaad ini gaa-niigaanishkaminid ji-gikendamoonawaad iniwe anokiiwi-mazina'iganan gaa-dibendamowaad awenenag aayaabajitoowaad ayanokiiwaad bagwadakamig giishin idash gegoo onjiikodaadiwaad awiya da-izhinizha'waa ji-wiidabinged ji-gwayakochiged.

6.5.10

Gaa-niigaanishkamowaad ji-onatoowaad awenenag ge-bagidinindwaa ji-andawenjigewaad imaa, gaawiin aaniish minosesinon megwaa gechiwaag imaa eyaawaad onji.

6.6 Waasiganikeng Dawikanaakeng

Gidanokiiwin

Owe megwaa gaa-anokaadeg izhichigewin, Manitoba Hydro (Gaa-waasiganikewaad) oga-wiindamawaawaa' iniwe gaa-niigaanishkaminid owe izhichigewin giishin wii-dawaakwada'igewaad gaa-waasiganikewaad. Onjida ji-wiidanokiindiwaad giishin waasigan wii-inaabiiginamowaad imaa nakeya'ii. Gakina dezhiikamowaad owe izhichigewin da-waawiindamaadiwag aaniin ayizhichigeng waabanong nakeya'ii zaaga'iganiing bagwadakamig.

Nitam gaa-zagaswe'iwewaad Manitoba Hydro, ogii-noonde-gikendaanaawaa' aaniin ge-inenjigaadenig giishin wii-inaabiiginamowaad waasiganeyaabiin ekwaanig iwe waabanong nakeya'ii bagwadakamig. Gaawiin awashime gii-zagaswe'iwesiiwag Manitoba Hydro, baanimaa gaa-niigaanishkamowaad iwe izhichigewin gakina bizindawaawaad gechiwaag imaa eyaanid minik ji-giizhashowewaad, mii apii miinawaa Manitoba Hydro ge-maajji-zagaswe'iwewaad.

Nanaandok gefoon gii-gagwedwem apii gaa-ozhibii'amawindwaa gaa-niigaanishkamowaad owe izhichigewin giishpin wii-dawaakwada'igeng ji-inaabiiginigaadegin waasiganeyaabiin imaa nakeya'ii. Memindage iwe Anishinaabeg zhigwa Wiisaakodewininiwag gaa-zaabenimaasigwaa Manitoba Hydro onzaam gaagii-bi-izhiseg odaanaang. Zhigwa miinawaa gii-noonde-gikenjigaadeg aaniishwiin waasigan wenji-ayaamagasinog aanind imaa nakeya'ii zhigwa miinawaa enagingdeg waasigan ishkonganing. Zhigwa ishkwaaj, aaniin awashime ozhichigaadeg waasigan ge-izhiwebizitang miziwekamig bagwadakamig.

Gaa-niigaanishkamowaad ogii-maamakaadenimaawaa' iniwe gaagii-bizindawaawaad imaa onji nakeya'ii aaniin gaa-inenimaawaad Manitoba Hydro gaagii-bi-doodaagowaad. Gagaana gii-gagwedwewag daga gegoo ji-ondiziwaapan giishin onaabiiginamowaad waasiganeyaabiin imaa nakeya'ii. Zhigwa miinawaa aanind gii-gagwedwewag aaniin ge-izhisemagak imaa bagwadakamig daabishkoo bichibowin atoowaad nibiikaang dago gedazhi-odaminowaad bashkwaang. Aaniin ge-izhiwebiziwaad igiwe gaa-andawenjigewaad zhigwa gaa-wanii'igewaad. Gagaana bemaadizidid gaagii-izhaanodawaawaad ogowe gaa-niigaanishkamowaad niibowa gegoon ogii-ayaanaawaa' ji-ikidowaad aaniin enendamowaad giishpin waasiganeyaabiin inaabiiginigaadegin waabanong nakeya'ii zaaga'iganiing.

Manitoba Hydro ji-gagwe-gwayakochigewaad gaagii-bi-izhichigewaad. Apii gaa-maaji-dibaazomaawaad Manitoba Hydro wii-gagwe-onaabiiginamowaad waasiganeyaabiin imaa nakeya'ii, gaawiin niibowa awiyag giiminwendanziiwag. Gaawiin aaniish odebwetawaasiwaawaa' gegoon ikidonid onzaam ogii-moonenimaawaa' gegoon ji-giimoojichigenid.

Anokii'aaganag enokaadamowaad owe izhichigewin gii-okwii-ikidowag gaawiin daa-bagidinaasiiwag Manitoba Hydro imaa ji-bimaabiiginigewaad giishin awiyag gechiwaag imaa eyaawaad ondizisigwaa gegoo.

6.6 Ji-izhichigeng

6.6.1

Ge-ani-onashoweng, wiidabindiwaad Manitoba Hydro zhigwa Anishinaabeg eyaawaad waabanong nakeya'ii, onjida ji-bimosaadeg iwe onashowewinan zhigwa inaakonigewinan daabishkoo iwe Protocols of Agreement gaagii-onashowaadamowaad Anishinaabeg zhigwa wiisaakodewininiwag waabanong nakeya'ii zaaga'iganiing zhigwa miinawaa iwe Inaakonigewin Broad Area Plan gaa-ijigaadeg Manitoba Gichi-ogimaa zhigwa igiwe gechiwaag imaa eyaawaad gaagii-onaakonamowaad.

6.6.2

Onjida ji-ganawaabanjigaadeg Anishinaabe Agwi'idiwin aaniin igaye ge-izhiseg bagwadakamig waabanong nakeya'ii zaaga'iganiing giishpin onaabiiginamowaad waasiganeyaabiin imaa nakeya'ii. Giishin wii-migoshkaaji'iwemagak onaabiiginigeng imaa nakeya'ii, bigo Manitoba Hydro ji-gwaawaanjichiged ji-diba'ang, ji-gwayakotood gegoo migoshkaajitood imaa nakeya'ii.

6.6.3

Manitoba Hydro ji-wiindamaaged aandi imaa nakeya'ii noonde-onaabiiginang waasiganeyaabiin, apooshke ini maawaj waabanong nakeya'ii zaaga'iganiing gaa-ganawaabanjigaadeg.

6.6.4

Ji-ganawaabanjigaadegiban daga ji-minosegiban giishin Manitoba Hydro onaabiiginigewaad waabanong nakeya'ii zaaga'iganiing zhigwa gaye gegoo ji-wiiji'aapan imaa gechiwaag eyaanid ji-ondizidid. Giishpin igaye gegoo noonde-izhichigewaad imaa nakeya'ii, onjida ji-wiindamaagewaad aaniin waa-izhichigewaad, aaniin igaye ge-izhiseg iwe ji-onji-naagajichigaadeg iwe bagwadakamig gichi-onashowewining UNESCO World Heritage gaa-ijigaadeg.

6.6.5

Giishin Manitoba Hydro wii-bimaabiiginamowaad waasiganeyaabiin imaa nakeya'ii, ji-ganawaabandamowaad dawaanig jiigikanaang ji-bimaabiiginigewaapan giishpin goda migoshkaajichigemagasinog iwe izhichigewaad. Zhigwa gaye giishin jiigikana bimaabiiginigewaad, gaawiin awiya oadaa-gashkitoosiin ji-ipizod bemaabiiginigaadeg waasiganeyaab.

6.6.6

Giishin Manitoba Hydro bimaabiiginamowaad waasiganeyaabiin imaa nakeya'ii, ji-izhichigewaad gechiwaag imaa eyaanid ji-anokiiwindwaa zhigwa ji-wiiji'aawaad gechiwaag imaa eyaanid giishin migoshkaajitoowaad obimaadiziwiniwaani.

6.6.7

Owe gaa-onaabiiginigaadeg waasiganeyaab waabanong nakeya'ii zaaga'ganiing, giishin Manitoba Hydro wii-bimaabiiginigewaad imaa nakeya'ii, aagawaya'ii oga-onaabiiginaanaawaan ji-waabanjigaadesinogin gebimishkaang. Giishin gaye ji-izhichigewaad, anaamibiing ziibiing da-aazhidewaabiiginigewag.

6.6.8

Onaniizaanendaanaawaa' gechiwaag imaa eyaawaad besho ji-bimaabiiginigaadenigin waasiganeyaabiin jiigaya'ii gaa-ayaawaad zhigwa jiigaya'ii gegoon gaa-bimaadakin. Gaawiin onandawendanziinaawaan waasiganeyaabiin naanwaak daso-diba'iganensan (500 m) jiigaya'ii ji-ayaamagakin eyaawaad giishin onaabiiginigeng. Manitoba Hydro ji-wiindamaagewaapan awegonen gekendamowaad ezhi-ayaamagak iwe waasigan. Giishpin idash waasigan migoshkaajitood mino-ayaawin, da-gwayakochigewag.

6.6.9

Jibwaa hydro gegoo izhichigewaad wii-onaabiiginigewaad, bigo ji-andooshkamowaad daga ji-migoshkaajichigewaad gechiwaag imaa nakeya'ii daabishkoo gaa-wanii'igeng, gaa-manoominikeng, gaa-noojigiigoo'iweng gemaa gegoo bakaan ji-migoshkaajitoosig. Manitoba Gichi-ogimaa oga-wiidanokiimaa' gaa-niigaanishkaminid owe izhichigewin gaawiin ji-mamigoshkaaji'idizosigwaa imaa gechiwaag gaa-anokiiwaad. Giishin gegoo izhi mamigoshkaaji'idizowaad, awiya da-izhinizha'waa ji-gwayakochiged.

6.6.10

Manitoba Gichi-ogimaa oga-gaanzomaan Manitoba Hydro-wan ji-andone'amonid bakaan ji-ondinamonid waasigan daabishkoo gaa-noodininig onji gemaa gaa-waasigenid giizisoon onji waabanong nakeya'ii zaaga'iganiing. Zhigwa gegoo ji-gagwe-mikang Manitoba Hydro ji-ondizinid imaa eyaanid giishin gashkitood iwe ji-izhichiged.

6.7 Biiwaabikokeng

Gidanokiiwin

Gaa-niigaanishkamowaad oganawaabandaanaawaa' maagizhaa daa-biiwaabikokem imaa nakeya'ii gaa-dazhiikigaadeg bagwadakamig.

Da-andone'igaade biiwaabik ji-ondinigaadeg imaa nakeya'ii debinaak gii-onashowaadeg wii-izhichigeng zhigwa miinawaa debinaak onaakonigewin bimosaadeg.

Daa-gashkichigaade ji-andone'igaadeg zhigwa ji-dazhiikigaadeg biiwaabik imaa nakeya'ii debinaak idash bimosaadeg onaakonigewin zhigwa miinawaa wiidabimindwaa gechiwaag imaa gaa-ayaawaad aaniin ayizhichigeng. Gikenjigaade wiin aandi imaa ji-inaabing ji-mikigaadeg biiwaabik ozhibii'igaadewan akiikaanimazina'iganing gidaa-mikaanan imaa naagadawenjiganaabikong.

Gikenjigaade wiin zhaawanong nakeya'ii imaa aandi ge-mikigaadegiban biiwaabik, gaawiin idash wiin gikenjigaadesinoon giuwedinong zhigwa naawaya'ii imaa nakeya'ii bagwadakamig. Gaawiin igo nagadenjigaadesinoon imaa nakeya'ii onzaam aaniish zanagan ji-izhaang imaa, gii-michi-babaa-ayinaabim jimazinibii'igaadeg aaniin ayizhinaagwak imaa nakeya'ii. Mii dash wenji-gikenjigaadesinog giuwedinong nakeya'ii daga jiiwaabikokengiban imaa nakeya'ii.

Gii-onatoonaawaa' gichi-ogimaa zhigwa gaa-mikamowaad biiwaabik ji-ganawaabandamowaad igiwe gaanoonde-anokiiwaad imaa nakeya'ii. Giishin giizhaakonigaadeg ji-anokiing, daa-maadanokiim imaa. Giishpin

idash wiin geyaabi gegoo ji-ganawaabanjigaadeg, geyaabi da-onashowem ji-gwayakochigeng. Onjida ji-bimosaadeg owe izhichigewin ji-minoseg anokiiwin imaa nakeya'ii.

Gaawiin igo mashi gaagii-niigaanishkamowaad owe izhichigewin giizhanokiisiwag gikinawaajitoowaad iwe bagwadakamig aandi ge-andone'amowaapan biiwaabikoon zhigwa aandi ge-migoshkaajitoosigwaa.

March 2000, gaa-biiwaabikokewaad, Manitoba Gichi-ogimaa, Anishinaabeg zhigwa aanind awiyag wendiziwaad imaa onji onashowewin ogii-ozhitoonaawaa' aaniin ji-inanokaadeg zhigwa aaniin igaye ge-izhi-ondizingiban. Mii owe mazina'igan wiindamaagemagan aaniin ji-izhi-wiidanokiindiwaad gaa-biiwaabikokewaad zhigwa gechiwaag imaa gaa-ayaawaad.

Megwaa igiweg mazina'iganan gaa-ayaamowaad ji-biiwaabikokewaad daa-danakamigiziwag imaa. Gaawiin maagizhaa ogikendanziinaawaa' gechiwaag imaa eyaawaad, giishin awiya gii-ondinang mazina'igan wii-biiwaabikoked imaa, akiing endanakamigizid odibendaan minik ji-giizhikamigizid. Giishpin gezika awiyag maadanokiiwaad jiigishkoniganing gemaa jiigaya'ii awiyag daawaad, daa-goshkwi'aawag gechiwaag imaa eyaawaad. Gaawiin iwe daa-izhisesinoon giishin waabanjigaadeg iwe onashowewi-mazina'igan.

6.7 Ji-izhichigeng

6.7.1

Gaa-niigaanishkamowaad da-wiindamaagewag jibwaa miigiwewaad mazina'igan ji-andone'ang awiya biiwaabik waabanong nakeya'ii zaaga'iganiing.

6.7.2

Geget wiin daa-biiwaabikokem imaa nakeya'ii giishin gaa-niigaanishkamowaad bimendamowaad aaniin waa-izhichigeng zhigwa gaye bimosaadeg onashowewin. Endashiwaad gaa-gagwedwewaad ganawaabanjigaadewan, bigo gaye gechiwaag imaa ji-ondizing.

6.7.3

Iwe The Manitoba Minerals Guideline (2000) gaa-ijigaadeg onashowewin wiindamaagemagan aaniin waa-izhichigeng, aaniin waa-izhi-naagajichigaadeg bagwadakamig, aaniin ge-izhi-ondizing imaa nakeya'ii jibwaa gegoo izhichigaadeg iwe waabanong nakeya'ii zaaga'iganiing.

6.7.4

Ezhi-niizhiwaad gaa-biiwaabikokewaad zhigwa gechiwaag imaa eyaawaad ji-bimosaadamowaad iwe onashowewin. Gaawiin gakina awiya oga-minwendanziin aaniin noonde-izhichigeng imaa nakeya'ii. Onjida ji-gagwe-ozhitoowaad wiindamaagewinan aaniin gaa-biiwaabikokewaad noonde-izhichigewaad, zhigwa gechiwaag ishkoniganing eyaawaad ji-gikenimoonindwaa aaniin ayizhichigeng.

6.7.5

Giishin awiyag noonde-andone'amowaad biiwaabik gemaa bakaan gegoo imaa nakeya'ii onjida ji-andooshkamowaad ji-migoshkaajitoosigwaa gegoo imaa jibwaa miinind mazina'igan. Gemaa gaye ji-migoshkaaji'aasig awiya' gaa-wanii'igenid, gaa-manoominikenid, gaa-noojigiigoo'iwenid gemaa awiya' bakaan gaa-danakamigizid imaa nakeya'ii. Manitoba Gichi-ogimaa oga-wiidanokiimaa' gaa-niigaanishkaminid owe izhichigewin weweni ji-gikenjigaadeg aaniin memindage ayizhichigeng imaa nakeya'ii. Giishin awiya migoshkaaji'idiwaad, awiya da-izhinizha'waa imaa ji-gwayakochiged.

6.8 Bakaan Miinawaa Gegoon

Gidanokiiwin

Gichi-ogimaa ji-gagwejiimaan gaa-niigaanishkaminid owe izhichigewin daga wegonen miinawaa gegoo ji-ganawaabanjigaadegiban maadanokaadeg owe.

Andooshkigewin

Megwaa oshki-maadanokaadeg owe izhichigewin gii-inendaam geyaabi bakaan gegoon ji-ganawaabanjigaadegin giishin wii-anokaadeg waabanong nakeya'ii zaaga'iganiing daabishkoo aaniin ji-bimenjigaadeg. Bezhiig wiin igo geyaabi ji-zagakibii'igaadeg aki giuwedinong imaa nakeya'ii. Awesiyag, zaaga'iganiinsan, noopimiing, biiwaabik gaagii-andone'igaadeg zhigwa aaniin gaa-bi-danaabajichigaadeg imaa nakeya'ii bagwadakamig. Zhigwa geyaabi ji-andooshkigaadeg dago ji-zagakibii'igaadeg awenenag awesiyag eni-jaaginewaad gemaa eni-niinamaadiziwaad.

Megwaa dash wiin geyaabi ji-zagakibii'igeng aaniin ge-izhichigengiban waabanong nakeya'ii, gikenjigaade dash wiin owe.

6.8 Ji-izhichigeng

6.8.1

Weweni ji-gikenjigaadeg wegonen ji-izhichigengiban waabanong nakeya'ii, gaa-niigaanishkamowaad iwe dinoowikaan anokiiwin ji-maamawibiwindwaa ji-wiidookaagewaad. Odaa-wiindamawaawaan gichi-ogimaan awegonen nendawenjigaadeg ji-izhichigengiban. Miziwe daa-ondinaawag ogowe gaa-niigaaniwaad daabishkoo gichi-gikinoo'amaadiiwigamigoon gemaa bebakaan awiyag Anishinaabewakiing gaa-naagajitoowaad.

Bakaan Miinawaa Ji-izhichigeng

6.8.2

Manitoba Gichi-ogimaa megwaa ji-oshki-miigiwesig mazina'iganan ji-dananokiing imaa nakeya'ii maagizhaa aaniish daa-bookonigaade onashowewin gaa-naagajichigaadeg nibiin imaa onji.

6.8.3

Manitoba Gichi-ogimaa ji-ayaangwaamitood gegoon bemaadakin imaa nakeya'ii jibwaa oshki-miigiwed gemaa aanike-miigiwe mazina'iganan ji-dananokiing waabanong nakeya'ii zaaga'iganiing.

6.8.4

Gwayak ji-ayaangwaamichigaadeg bagwadakamig giishin wii-oshkimaadanokiing imaa nakeya'ii memindage giishpin awashime niishtana ashi naanan anokii'aaganag wii-anokiiwindwaa. Bigo ji-ganawaabanjigaadeg aaniin ge-izhichigemaganinig odanokiiwiniwaa gechiwaag imaa nakeya'ii. Giishin bimosaadeg onashowewin, da-gikenjigaade daga ji-migoshkaajichigemagak odanokiiwiniwaa, mii dash bigo awiya ji-ganawaabandang jibwaa gegoo izhichigeng. Awiya gegoo maajitood imaa nakeya'ii zhigwa awashime niishtana ashi naanan anokii'aagana' ayaawaad, bigo ji-anookiid ji-ganawaabanjigaadenig odizhichigewin jibwaa naanwaaki ojjiisenig. Megwaa wiin imaa enokiiwaad, bakaan izhigaabawiwag, igiwe dash gaawii-oshki-maadanokiiwaad, gichi-ogimaa oga-onatoon iwe onashowewin.

6.8.5

Bigo onashowewin ji-ateg ji-ondiziwaad gechiwaag imaa eyaawaad waabanong nakeya'ii zaaga'iganiing Lake Winnipeg.

7.0 Giizhazhoweng

Niigaanikana: Bapiiwinan zhigwa Ondiziwinan

Gaawin mashi giizhaakonigaadesinon iwe Broad Area Plan onashowewin gaa-ijigaadeg. Gaamashi gii-giizhichigaadesinon niibowa gegoon imaa onashowewining, gaamashi gaye gechiwaag imaa eyaawaad gii-ganawaabanjigaadesinon gegoon megoshkaadendami'igowaad. Ji-miigwechiwi'angid Manitoba gichi-ogimaa gaa-giikinang owe gaa-onashoweng.

Iwe onashowewin Memorandum of Understanding gaagii-jakibii'amowaad Anishinaabeg imaa eyaawaad zhigwa Manitoba Gichi-ogimaa gii-inaakonigewag wii-dazhiikamowaad wii-giizhaakonamowaad iwe Protocols of Agreement gaa-ijigaadeg ji-wiidanokiindiwaad. Iwe Onakonigewin ji-migoshkaajichigaadesinog bagwadakamig ezhibii'igaadeg, Manitoba Gichi-ogimaa gagaanzomaa bakaan ji-izhi-wiidanashowemaad wiisaakodewininiwa' waabanong nakeya'ii zaaga'iganiing. Onjida ji-gikenjigaadeg gakina ono onashowewinan zhigwa onakonigewinan ji-aabajichigaadegin ji-minoseg, gaawin besho ji-bagidinaakonigaadeg.

Zhigwa miinawaa onashowewin ji-ayaamagag ji-bimosaadegin ono onashowewinan zhigwa onakonigewinan jidago-bizindawindwaa gechiwaag imaa eyaawaad nakey'ii. Awiya gemaa awiyag ge-asindwaa da-izhichigewag ji-bimosaadenigin ini onashowewinan zhigwa onakonigewinan.

Geget da-zanagan, giishin idash gaagiizhichigeng, owe Broad Area Plan izhichigewin gaa-ijigaadeg waabanong nakeya'ii zaaga'iganiing, nawaj da-ani-mino-wiiji'idiwag Anishinaabeg zhigwa Gichi-ogimaa omaa Kanada-akiing. Bebakaan da-ani-izhi-wiijiwindiwag Anishinaabeg imaa nakeya'ii zhigwa Manitoba Gichi-ogimaa.

Niibowa gegoon bapiichigaadeg omaa izhichigewining. Daabida ji-wiindamawindwaa gechiwaag imaa eyaawaad aaniin ayizhichigeng. Ji-giizhichigaadeg igaye gegoo aaniin gaa-izhi-ashodamaageng. Aaniin igaye zhemaag gegoo ji-izhi-memeshkwaji-wiindamaadiwaad gechiwaag imaa eyaawaad zhigwa gichi-ogimaa.

Manitoba Gichi-ogimaa daa-gichi-inendam owe giizhichiged izhichigewin. Giishpin gwayak giizhichigaadeg owe izhichigewin, maagizhaa nawaj daa-mino-wiidanokiindiwag Anishinaabeg azhigwa gichi-ogimaakaanag. Maagizhaa daa-dadewetawaawag gichi-ogimaakaanag. Giishin giizhichigeng, nawaj Anishinaabeg daa-gashki'ewiziwag aaniin noonde-izhichigewaad ani-niigaan, gakina awiya dash Manitoba akiing da-ondizi gegoo.

Zhigwa miinawaa bezhigwewig gegoo, giishin giizhaakonigaadeg owe Broad Area Plan gaa-ijigaadeg daa-naagajichigaadeg bagwadakamig waabanong nakeya'ii zaaga'iganiing Lake Winnipeg.

Owe mazina'igan, bangii eta giwaabandaamin aaniin ge-ani-izhiseg ani-niigaan giizhaakonigaadeg owe onakonigewin. Giishin ji-giizhanokaadeg owe izhichigewin zhigwa ini onashowewinan wezhibii'igaadegin imaa, giga-bagoseniinaan gichi-ogimaa ji-ani-giizhaakonang. Giishpin giizhanokaadeg owe izhichigewin, maagizhaa gakina gegoo gaagii-ashodamaageng imaa mazina'iganiing da-miinidim.

Glossary of Terms

Aanikanootaaganan

Aboriginal Peoples...

Anishinaabe(g) – Anishinaabeg gaa-inindwaa omaa mazina'iganiing, mii owe onakonigewining ayaabajitoowaad wiinaawaad Anishinaabe' omaa kaanada Akiing. Mii gaye bezhigon ingiwe enindwaa Indians, Agowaaganag biindig gemaa agwajaya'ii ishkoniganing, First Nations, zhigwa ingiwe gaa-agowaasiwindwaa. Mii miinawaa bezhigon Metis (Wiisaakodewininiwag) zhigwa Inuit gaa-inindwaa.

Aboriginal Treaty Rights and Traditional Lands Impact Assessment

Agwi'idiwin zhigwa Ge-izhisegiban Anishinaabewaki – Onjida ji-gikenjigaadeg Anishinaabe Agwi'idiwin zhigwa aaniin ge-izhisegin giishin maadanokaadeg anishinaabewakiin.

Area Of Special Interest (ASI)

Nitam Genawaabanjigaadegin – Nitam akiin ge-ganawaabanjigaadegin ji-naagajichigaadegin. Aandi bagwadakamig niigaan maawaj ji-ganandawaagiban ji-mamino-ayaamagakin awegonenan imaa eyaamagakin. Ji-zagakibii'igaadegin ini akiin awegonenan ji-onji-naagajichigaadegin ji-migoshkaajichigaadesinogin. Mii dash zagakibii'igewinan aabajichigaadewan ji-wiindamawindwaa imaa gaawii-anokiitoowaad iwe aki. Gaawiin mashi onaakonigaadesinonon ini izhichigewinan. Miziwe imaa genawaabanjigaadegin ini akiin, daa-meshkwajichigem enigokwaagin giishin inashoweng aaniishwiin ji-onji-mangichigaadegibaniin.

Mii owe onashowewin ongowe Gaa-naagajitoowaad Bagwadakamig (Conservation and Industry), Wendaadiziwin zhidagwa Biiwaabikokewin Wegimaakaanitoowaad (Economic Development and Mines) ogii-giizhashowaadaanaawaa,' giishpin nandawenjigaadeg ji-babaamenjigaadesinog bezhigwekamig bagwadakamig, da-izhinizha'amawaa gichi-ogimaa ji-gibitinang gegoo ji-izhichigesing imaa nakeya'ii.

Assessment and Review of Effects –

Zagakibii'igaadegin Ayizhisegin – Mii owe onashowewin da-ganawaabanjigaade aaniin ge-izhi-migoshkaaji'iwemagasinog gegoo izhichigewin bezhigwekamig ningoji, daabishkoo ji-wanishkwetoosig wendaadiziwin, babimaadiziwin, izhitwaawin zhidagwa mamino-ayaawin. Mii dash imaa mazina'iganing naanigoding da-izhibii'igaade aaniin ge-izhi-zagakibii'amowaad ono daabishkoo giishin gegoo izhichigeng aaniin ge-izhisemagak, aaniin giitwaam ge-izhi-ganawaabanjigaadeg igaye. Da-bimosaadewan Onaakonigewinan daabishkoo Canadian Environmental Assessment Act zhidagwa Manitoba's Environment Act gaa-ijigaadegin awegonenan ji-naagajichigaadegin maadanokaadegin gegoon imaa nakeya'ii bagwadakamig.

Biodiversity

Ganandawaag Bagwadakamig – Gakina gegoon eyaamagakin ningoji bezhigwekamig, daabishkoo gegooan wagidakamig zhidagwa nibiing eyaamagakin aaniin igaye ji-izhi-ganandawaagin. Mii-go bezhigwan enawendakin bemaadakin ji-migoshkaajichigaadesinogin. (Convention of Biological Diversity, 1992)

Giishin ginwezh gegoon na'ishkodaadiimagakin bezhigwanong, bigo gegoo imaa odaapinigaadeg da-migoshkaajichigemagan. Gaawiin ji-migoshkaajichigaadeg iwe dinoowikaan ji-waabanda'iweng aaniin ge-izhi-minoseg ji-bagidinigaadeg maanoo ji-ganandawaag. Maagizhaa naagach daa-waabanjigaade mii eta ge-izhi-minwaadiziimagakin imaa bezhigwakamig eyaamagakin (Natural History Museum, Biodiversity and Worldmap website).

Boreal Forest (contiguous) –

Noopamakamig (miziweyaakwaa) – O'omaa Kaanada akiing ayaamagan maawaj mechaag noopamakamig wagidakamig. 35 dibach (35%) diba'igan inigokwaa noopamakamig miziwekamig omaa Anishinaabewaking. Mii gaye iwe gigisin waabanong nakeya'ii zaaga'iganiing bagwadakamig. Mii omaa dash endazhiikewaad 60 dibach (60%) diba'igan bineshiyag. Ningoji igo 3,000,000,000 bineshiyag bi-wadiswanewag omaa endaswaaki. Zhidagwa miinawaa mii omaa maawaj baataniinowaad adikwag wagidakamig. Mii omaa gaye ma'inganag ani-niizhwewig epiichiinowaad zhidagwa bebakaan makwag.

Niibowekamig gegoon bemaadakin daabishkoo awesiyag zhidagwa netaawigingin omaa dazhiikemaganonon bagwadakamig. Mewinzhawekamig Anishinaabeg ogii-aabajitoonaawaan gegoon bemaadakin imaa onji.

Boreal Forest Conservation Framework –

Onashowewin Noopamakamig Ji-ganandawaag – Gaa-niigaanishkamowaad owe noopamakamig ji-ganandawaanig odayaanaawaa' gikendaasowin ji-izhigaabawiwaapan Boreal Leadership Council inaawag. Gakina enanokiowaad onandawendaanaawaa' ji-ani-gaagige-migoshkaajichigaadesinonig noopamakamig.

Nandawenjigaade ji-ganandawaag noopamakamig, ji-migoshkaajichigaadesinog gegoon imaa wendaadizing zhidagwa izhitwaawin. Mii dash, mii owe waa-izhichigewaad:

-aabita noopamakamig babaamenjigaadesinog; zhidagwa

- ji-wiidookawindwaa gechiwaag imaa wendaadiziwaad, dadibatoowaad ondaadiziwinan zhigwa eshkoseg aabita bagwadakamig weweni ji-naagajichigaadeg

Ongowe gaa-niigaanishkamowaad ji-ganandawaanig noopamakamig ogiigitootamawaawaa' awiya' omaa Kaanada akiing nendawendaminid ji-izhichigengiban. Ogikendaanaawaa' gaye bebakaan da-ayizhichigem bebakaan nakeya'ii noopamakamig anokaadamowaad owe izhichigewin. (Canadian Boreal Initiative website)

Boreal Shield

Noopamakamig Bemaakwaag – Ningoji igo 195 million (hectares) diba'akiikaaning inigokwaa iwe Noopamakamig Bemaakwaag omaa Kaanda akiing. 80 (80%) dibach diba'igan iwe noopamakamig mitigokaa. Bebakaan zhingobiig memindage nitaawigiwag imaa. Zhaawanong nakeya'ii zhingwaakoog zhigwa mina'igoog nitaawigiwag wiin imaa. Bebakaan mitigooog daabishkoo wiigwaasaatigoog nitaawigiwag imaa miinawaa. Zhigwa nanaandok awesiiyag dazhiikewag imaa noopamakamig daabishkoo adikwag, waawaashkeshiwag, makade-makwag, ma'inganag, waabizheshiwag, waaboozoog, ojiigwag, bizhiwag, gidagaabizhiig igaye. Zhigwa miinawaa nanaandok bemaashiwaad awesiiyag ayaawag imaa daabishkoo gookooko'oog, maangwag zhigwa bebakaan bineshiyensag. (Natural Resource Canada website)

Broad Area Planning (BAP) –

Miziwekamig izhichigewin – Waabanong nakeya'ii zaaga'iganiing wenashowaadeg aaniin ji-izhichigaadeg ji-ganandawaag, ji-ani-ondaadizing imaa onji, ji-migoshkaajichigaadesinog mamino-ayaawin, izhitwaawin, zhigwa obimaadiziwiniwaan gechiwaag imaa gaa-ayaawad dago ingiwe gechiwaag imaa wendaadiziwaad anokiiwaad.

Canadian Boreal Forest Initiative –

Kaanada Akiing Noopamakamig Ji-Naagajichigaadeg – Ingiwe gaawii-naagajitoowaad Noopamakamig Canadian Boreal Forest Initiative gemaa Canadian Boreal Initiative inaawag. Mii ongowe wiidanokiimaawaa' bebakaan awiya' enanokiinid. Wiidanokiimaawaa' Anishinaabe' zhigwa bebakaan awiya' gaa-izhi-gikendaasonid ji-bimendamowaad iwe bagwadakamig. December 1, 2003, gii-maada'ookiiwag odoonashowewiniwaan Boreal Forest Conservation Framework izhinikaadenig. Nanaandok awiyag gii-wiidookaagewag ji-giizhaakonamowaad owe onashowewin daabishkoo ingiwe ezhi-gikendaasowaad zhigwa Anishinaabeg ogii-wiiji'igowaa'. Gakina dash ingiwe gaagii-giizhashowewaad zhigwa oniigaanishkaanaawaa' owe ji-naagajichigaadenig noopamakamig omaa Kaanada akiing. (Canadian Boreal Initiative (CBI) website)

Co-management (Share-management) –

Waawiiji'idiwin – Minose waawiiji'idiwaad awiyag onashowewaad aaniin gwayak ji-izhichigengiban gegoo maadanokaadeg daabishkoo gichi-ogimaa zhigwa awiyag gaa-noonde-ondaadiziwaad bagwadakamig. (Manitoba Conservation)

Consultation –

Gagiikindiwin – Ingiwe gaa-anokaadamowaad ji-aanike-ondaadizing bagwadakamig, inendamoog bigo ji-andotawaawaad aaniin bemaadizinid enendaminid, aaniin gichi-ogimaakaanag enendamowaad zhigwa bebakaan awiya' wendaadizinid imaa bagwadakamig, ji-gikendamowaad aaniin gwayak ji-izhichigewaapan. Gichi-onashowewin idash wiin owe odazhiikaan Anishinaabeg aaniish onjida gegoo ji-ondiziwaapan gegoo izhichigaadenig gechiwaag odakiiwaan.

COSDI –

Ji-aanike-ondaadizing Bagwadakamig – Gii-onasaawag awiyag ji-niigaanishkamowaad owe izhichigewin ji-aanike-ondaadizing bagwadakamig. 1997 Gichi-ogimaa gii-anookii ji-onachigaadenig onashowewin aaniin ji-izhi-bimenjigaadenig bagwadakamig aayaabajichigaadenig. 18 gii-dashiwag gaagii-niigaanishkamowaad zhigwa 60 gii-dashiwag gaagii-gagiikingewaad ji-giizhashoweaadenig owe onashowewi-mazina'igan. June, 1999 gii-miinaa' gichi-ogimaa iwe mazina'igan, gaa-ishkwaa meshkwadasindwaa gichi-ogimaakaanag, ogii-giizhaakonaanaawaa' iwe onashowewin 2000 ekiiwang.

Double Majority –

Niizhwewig Giizhashowewin – Owe waabanong nakeya’ii zaaga’iganiing izhichigewin enokaadeg, niizhwewig daa-ayaawag ge-giizhashowewaad aaniin ji-izhichigeniban gegoo izhichigeng imaa nakeya’ii. Giishin onashoweng aaniin gegoo izhichigewin ji-izhichigaadeg, ezhi-niizhiwaad gechiwaag imaa eyaawaad zhigwa gaa-niigaanishkamowaad owe izhichigewin da-onashowewag ji-giizhashowaadamowaad awegonen ji-izhichigengiban.

Ecological Integrity –

Ganandawaa Bagwajaya’ii – Giishin babaamenjigaadesinogin gegoon eyaamagakin bagwajaya’ii, da-ani-gaagige bimaadanoon giishpin abooshke naagajichigaadesinogin. Giishpin gegoo migoshkaajichigaadesinog bagwadakamig gakina gegoo ji-ayayaamagak daabishkoo asiniig, nibiin zhigwa miinawaa gegoon daabishkoo ishkoden, mooshka’amowin abooshke sago awesiiyag gaa-nooji’idiwaad, nawaj ginwezh da-ani-gaagige ganandawaamagan. Parks Canada website.

Ecosystem –

Na’ishkodaadiziwin – Gakina gegoon bemaadakin bezhigwanong na’ishkodaadiimaganoon ji-maamawi-bimaadakin. (forestry)

Ecozone –

Bagwadakamig – 15 izhi gikinawaajichigaadewan akiinsan omaa Kaanada akiing. Izhi gakina ini akiinsan nisidawinaagwanoon awegonenan imaa waabandaman daabishkoo waabanong nakeya’ii zaaga’iganiing.

Effect –

Ezhichigemagak – Giishpin gegoo izhichigaadeg bagwadakamig, waabanjigaadeg ezhichigemagak iwe izhichigewin.

Endangered Species –

Eshonegin Bemaadakin – Manitoba akiing ayaamagan onaakonigewin ji-naagajichigaadegin gegoon bemaadakin eshonemagakin. Wiindamaagemagan iwe onaakonigewin awegonenan niigaan ji-ayaangwaamitoong aaniin igaye ji-ayaangwaamichigaadegin.

Environment Thresholds –

Migoshkaajichigewin – Ningoji bagwadakamig eyaamagak ganandawaag, gakina gegoon aaniish wijiwaaganidiwan. Giishin gegoo migoshkaajichigaadeg imaa bagwadakamig, da-wanishkwesemaganoon gakina gegoon imaa nakeya’ii. Geget wiin bebangii gegoon gidaa-ayizhichigaadaan iwe bagwadakamig gaawiin gidaa-migoshkaajitoosiin. Daabishkoo ziibiin gemaa zaaga’iganiin, giishpin gichi-izhichigaadaman ziibi gemaa zaaga’igan, maagizhaa gidaa-migoshkaajitoonan gegoon imaa bemaadakin gemaa gaye gidaa-migoshkaaji’aag gechiwaag imaa wendaadiziwaad. Naanigoding idash gwaawaanjichigem, gemaa bekish maamiinchigem ji-migoshkaajichigaadesinog bagwadakamig giishin gegoo wii-izhichigeng bezhigwekamig.

Forest Stewardship Council –

Noopamakamig Naagajitoowin – Noopamakamig gaa-naagajitoowaad The Forest Stewardship Council izhinikaazowag. 1993 gii-onachigaade owe onashowewin ji-naagajichigaadegin noopamakamigoon miziwekamig. Ogi-onatoonaawaan onashowewin ji-bimosaadegin ji-naagajichigaadegin miziwe noopamakamig.

Nanaandok awiyag imaa namadabiwag daabishkoo gaa-naagajitoowaad bagwadakamig, gaa-naagajitoowaad mamino-ayaawin, noopimiing wendaadiziwaad, Anishinaabeg, zhigwa miinawaa nanaandok awiyag gaa-inanokiiwaad. Gakina wiidanokiindiwag ji-naagajitoowaad bagwadakamig. Gagiiginaawag awenenag ge-niigaanishkamowaad owe izhichigewin, iwedi Bonn, Germany ondanokiiwag.

Fragmentation –

Biigwasewin – Giishin niibowa bashkoda’igaadeg noopimiing, nawaj da-agaasin. Dayegoch da-ayaagaasaakwaa. Daabishkoo miikanaachigeng noopimiing, giishkinigaade iwe enaakwaag. Giishpin gegoo izhi izhichigaadeg iwe noopimiing, aanjichigaademagan, mii ezhi-biigwaseg, bakaan aaniish gegoon gaagii-izhi-babimaadakin imaa daa-aanjisemagan igaye.

Genetic diversity –

Nanaandokowaadiziwin – Bebakaan bemaadakin nanaandokonaagwanoon ambe ningodwewig onaadiziwining onjsemaganoon daabishkoo iwe DNA edamowaad waabishkiiweg.

Great Lakes Indian Fish and Wildlife Commission (GLIFWC) –

Gichigamiing Nakeya’ii Wendaadizing Onaakonigewin – Owe onaakonigewin ji-naagajichigaadeg Anishinaabeg Agwi’idiwin agwajaya’ii ishkoniiganing. 1984 gii-onachigaade 11 Anishinaabe ishkoniiganan ji-bimendamowaad iwe bagwadakamig. Gii-onaakonigem Anishinaabeg ji-ondaadiziwaad gechiwaag imaa agwajaya’ii odishkoniganiwaang, zhidigwa gaye niigaan ji-ani-ondaadiziwaapan.

Guidelines –

Bemosaadegin – Giishin gegoo wii-izhichigeng bagwadakamig omaa Manitoba, onjida ji-bimosaadaman onashowewin aaniin ge-izhichigemagak gidizhichigewin.

Habitat –

Endanaadiziwin – 1. Ningoji epenimodaadiimagakin gegoon ji-bimaadakin. 2. Gegoon wiji’iwesemagakin ningoji, onjida ji-ayaamagakin bagwadakamig gechiwaag imaa gegoon ji-bimaaji’omagakin.

High Conservation Value Forest –

Getenjigaadegin Bagwadakamig – Miziwekamig gegoon gitenjigaadewan daabishkoo wendaadiziwaad awesiiyag, ziibiin gaa-naagajichigaadegin zhidigwa ningoji Anishinaabeg gaagii-bi-dazhitwaawaad. Giishin ningoji gikenjigaadegin ji-ayaangwaamichigaadeg, mii iwe niigaan ge-dazhiikigaadeg. Mii owe gaa-inashowewaad 1999 igiwe gaa-naagajitoowaad noopimiing Forest Stewardship Council enindwaa omazina’iganiwaang. Giishpin idash bimosaadeg owe onashowewin nawaj daa-minose ji-naagajichigaadeg noopimiing apiich wiin bebakaan noopamakamig naaniigaanichigaadeg. Giishin idash bimosaadeg owe onashowewin, daa-wendan aaniin ji-izhichigengiban ji-biigwanigemagasinog gegoo.

Getenjigaadegin gegoon:

- a. noopamakamig miziwekamig:
 - i. nanaandokowaadiziwin daabishkoo manijooshag, eshnewaad awesiiyag, gezhizhawiziing;
 - ii. ji-mamaangaakwaagiban ji-gagizhizhawiziwaadiziimagakin bemaadakin imaa noopimiing.
- b. noopimiin eyaamagakin gegoon bemaadakin gikinawaadinaang eta ji-danaadiziwaapan.
- c. noopimiin onjida ji-migoshkaajichigaadesinogin gemaa daa-biigwanigemaganoon daabishkoo ziibiin gemaa gegoon ji-mechisemagasinogin; zhidigwa
- d. noopimiin gaa-ondaadiziwaad imaa gechiwaag gaa-ayaawaad gemaa gechiwaag imaa gaa-aabajitoowaad odizhitwaawiniwaang bagwadakamig.

Impact Benefit Agreement –

Wiidanashowewin – Giishin gegoo awiya gegoo noonde-izhichiged bagwadakamig, wiidanashowemaa’ gechiwaag imaa eyaanid aaniin noonde-izhichiged daabishkoo Anishinaabeg gaa-wiidanashowemindwaa giishin awiya gegoo wii-izhichiged odakiiwaang. Maagizhaa bezhigwewig gegoo odaa-ganawaabandaanaawaa’ gemaa gakina gegoo ge-izhichigemaganinig odizhichigewiniwaa.

Land-use Planning –

Aki Waa-danaabadak – Mii owe izhigiizhwewin aabadak wiindamaageng aaniin waa-danaabadak aki. Ganawaabanjigaade aandi nakeya’ii bagwadakamig waa-aabajichigaadeg aaniin igaye ge-izhisemagak giishin gegoo inabajichigaadeg. Daabishkoo wegonen maawaj ge-minosemagak gemaa ge-migoshkaajichigemagakipan. Giishpin idash giizhaach gwayakochigeng, nawaj daa-minosemagan giishin igaye wiidabimindwaa gechiwaag

imaa eyaawaad gakina gegoo ji-ganawaabanjigaadegiban imaa izhichigewining. Daa-ganawaabanjigaade aaniin waa-danaabadak aki miziwekamig omaa wagidakamig.

Manitoba Model Forest –

Manitoba Akiing Noopamakamig – Ingiwe Manitoba Model Forest gaa-inindwaa 25 gegoon ogiigitootaanaawaan Manitoba Noopamakamig. Nanaandok awiyag namadabiwag imaa daabishkoo gichi-ogimaa, Anishinaabeg, nanaandok awiyag gaa-inanokiiwaad zhigwa miinawaa gechiwaag imaa eyaawaad abooshke awiyag gaa-ondaadiziwaad imaa noopamakamig. Mii dash owe naagajichigaade ji-migoshkaajichigaadesinog iwe noopamakamig. O’owe Manitoba Noopamakamig 1.05 million hectares inigokwaa, imaa onji Lake Winnipeg izhi Ontario gaa-maajising akwaa.

Nanaandok ongowe izhichigewag gaa-inanokiiwaad, daabishkoo bebakaan gegoo onandooshkaanaawaa’, bakaan miinawaa gegoon ji-gikenjigaadegin daabishkoo:

- aaniin adikwag ayinaadiziwaad babaamaadiziwaad ji-gikenjigaadeg aaniin ji-ondaadizingiban gegoo bagwadakamig ji-migoshkaaji’ aasiwindwaaban

- awegonenan eyaamagakin noopimiing zhigwa

- wiidanokiindiwin. Wiidanokiimindwaa wendaadiziwaad imaa noopimiing.

Manitoba Minerals Guideline –

Manitoba Gaa-biiwaabikokewaad Onashowewin – May 1988, Manitoba odoogimaakaana’ gaa-niigaanishkaminid biiwaabikokewin zhigwa bebakaan ondaadiziwinan ogii-wiidabimaa’ Anishinaabe’, wiisaakodewininiwa’ giuwedinong ishkoniganan eyaawaad, ji-dazhindamowaad aaniin ge-izhi-wiidanokiindiwaapan. Onjida ji-wiidabindiwaad ji-onashowaadamowaad awegonen ji-ganawaabanjigaadegin giishin bagwadakamig ondaadiziwin wii-onachigaadeg omaa Manitoba akiing. Mii dash owe onashowewin da-wiji’iwemagan ji-mino-wiidookaadiwaad gakina gaawii-niigaanishkamowaad owe izhichigewin.

Manitoba Principles and Guidelines of Sustainable Development –

Manitoba Onashowewinan Aanike-ondaadiziwin Onji – Mii ono onashowewinensan ji-bimosaadegin giishin ji-aanike-ondaadizing gegoo omaa Manitoba akiing. The Sustainable Development Act izhinikaade.

Memorandum of Understanding (MOU) –

Giizhashowewin Jakibii’igaadeg – Giishin awiyag wii-giizhashowaadamowaad gegoo, mii ezhi-niizho-jakibii’ amowaad. Daabishkoo Manitoba gichi-ogimaa, Anishinaabeg waabanong nakeya’ii zaaga’iganiing gaa-ayaawaad ji-jakibii’ amowaad onashowewin aaniin ji-izhichigengiban gegoo izhichigaadeg imaa nakeya’ii.

Non-Timber Forest Products –

Mitigwanzinogin Ondaadiziwinan – Gakina gegoon wendinigaadegin noopimiing mitigwanzinogin abooshke gegoo wenjisemagasinogin mitigong daabishkoo bigiwag zhigwa aniibiishan. Zhigwa miinawaa wendinigaadesinogin gegoon netaawiging gemaa awesiiyang onji. Noopamakamig nanaandok gegoon ondaadizim daabishkoo ongowe gaa-andawenjigewaad, gaa-wanii’igewaad, gaa-noojigiigoo’iwewaad zhigwa wendizing awiyag gaa-mawadisidamowaad bagwadakamig ji-babaami-ayaawaad.

Precautionary Principle –

Aangwaamiziwin Onashowewin – Mii owe onashowewin, Principle no. 15 izhinikaade, 1992 Rio Declaration on Environment and Development izhinikaade onashowe mazina’igan. Giishin gikenjigaadeg gegoo izhichigewin daa-biigwanigemagan gemaa da-migoshkaajichigemagan bagwadakamig, gaawiin ginigaanj ji-zhaabootoowin giishin abooshke ayaamagasinog onashowewin ji-bimosaadeg gemaa gaye noonde-wanichigesivan. Geget wiin bimosaade owe onashowewin, mewinzha dash gaagii-onachigaadeg, noongom gagwe-maamiinobii’igaade ji-nisidotaagwak.

Proponents –

Begosendamowaad – Awiya gaa-bagosendamowaad gegoo noonde-izhichigewaad ji-ondaadiziwaad bagwadakamig daabishkoo gichi-ogimaa gemaa bigo awiya iwe noonde-izhichiged.

Protected Area –

Naagajichigaadeg Aki – Mii owe wiin naagajichigaade aki ji-migoshkaajichigaadesinog gegoo ji-izhichigaadesinog. Mii odinoowikaanan akiin gii-onaakonigaadewan ji-naagajichigaadegin. Omaa Manitoba akiin, The Parks Act izhinikaade onaakonigewin iwe gaa-inaakoniged. Gaawiin wiin babaamenjigaadesinon Anishinaabe Agwi’idiwin.

Protected Area Accord –

Wiidanashowewin Ji-naagajichigaadegin Akiin – Iwe onashowewin Protected Areas zhidwa Anishinaabeg gaa-naagajichigewaad, March 2002 gaa-akiiwang ogii-jakibii’anaawaa’ onashowewin ji-maamawi-naagajichigaadenig odakiiwaan Azaadiwiziibi, Baawingaashi, Mishibaawitigong zhidwa Biigaanjigam. Gichi-onashowewin zhidwa onaagajitoo. Gaa-ishkwaa jakibii’amowaad, naagach Miskoziibi gewiinawaa ogii-jakibii’anaawaa.’

Protected Areas Initiative (PAI) –

Ji-ganandawichigeng Onashowewin – Omaa Manitoba akiing ogii-onatoonaawaa’ onashowewin ji-migoshkaajitoosigwaa bebakaan bagwadakamig. Apane 1990, 350,000 hectares akii diba’igan ogii-naagajitoonaawaa’ akiinsan mii zhidwa gegaa 54. million hectares 2004 ekiiwang onaagajitoonaawaan. 8.4% dibach diba’igan akiinsan omaa Manitoba naagajichigaadewan.

Protected Area Network –

Bebakaan Bagwadakamig Naagajichigaadeg – Miziwekamig naagajichigaadewan bebakaan bagwadakamig daabishkoo nebiikaang, endazhiikewaad awesiiyag bigo sago ji-migoshkaajichigaadesinog bagwadakamig.

Protocols of Agreement –

Ji-izhi-wiidanokiinding (Anishinaabeg Ji-wiidanokiimindwaa) – Ingiwe gaa-niigaanishkamowaad Aanike-ondaadiziwin Bagwadakamig gii-ikidowag ji-wiidanokiimindwaa Anishinaabeg giishin gwayak ji-izhichigeng gegoo izhichigaadeg gechiwaag eyaawaad waabanong nakeya’ii zaaga’iganiing. Gakina gegoo ji-ganawaabanjigaadeg jibwaa gegoo izhichigeng daabishkoo aaniin ge-izhichigemagak izhichigewin, awenen waa-anokaadang imaa bagwadakamig, wegonen izhichigewin ge-minoseg zhidwa wegonen izhichigewin ge-migoshkaajichigemagakipan abooshke gaye awenenag ge-ondiziwaapan gegoo imaa maajichigaadeg. Gaa-niigaanishkamowaad Waabanong Nakeya’ii Zaaga’iganiing izhichigewin ogii-onatoonaawaa’ iwe onashowewin ji-wiidanokiinding memindage imaa nakeya’ii onji. Ji-bimosaadeg iwe onashowewin giishin gegoo wii-izhichigeng imaa bagwadakamig, izhi gakina ezhi-dibendaagoziwaad imaa oga-ayaanaawaa’ gegoo ji-ikidowaad.

Mii gaye bezhigwan ge-doodawindwaa wiisaakodewiniwag gaa-ayaawaad imaa. Gewiinawaa da-andomaawag ji-wiidabingewaad onashoweng aaniin noonde-izhichigeng.

Public –

Bigo Awiya – Niizhwewig izhigiizhwem owe ikidowin. Giishin wiindamaading gegoo, gakina awiya gemaa bigo awiya iwe gaa-inind. Zhidwa miinawaa, giishin zagaswe’iding, bigo awiya da-izhaa giishin gegoo ayaad wii-ikidod gaawiin wiin ji-wanishkwe’iweng.

Public Participation Process –

Wiidookaagewin – Awiya gaa-wiidookaaged onashoweng. Naanigoding michi-bizindamoog zagaswe’iding, bagidinaawag ji-giigidowaad, gemaa gaye gagwejimaa awiya ji-jakibii’ang gii-ayaad imaa, izhi-dibendaagozid imaa gemaa wiindamaagenid noonde-gikendang aaniin ge-ani-inashoweng gaagii-dadibaadodigaadenig

Resources –

Ondaaji’owin – Omaa mazina’iganing, ondaaji’owinan ijigaadewan gegoo wendaaji’owang daabishkoo nooding, nibi, aki gaye. Giishin gegoo bakaan ijigaadeg, da-wiindamaagem.

Stakeholder –

Gaa-dagwiiwaad – Gaa-dagwiiwaad inaawag ingiwe ge-migoshkaajichigaadenigiban odanokiiwiniwaan gegoo meshkwajichigeng imaa nakeya’ii endanakamigiziwaad. Gakina awiya wendaadiziwaad imaa bagwadakamig ji-naagajitoowaad aaniin noonde-izhichigaadenig imaa endazhiikewaad ji-wanishkwe’ aasiwindwaa. Gichi-ogimaa zhigwa gaa-niigaanishkamowaad waabanong nakeya’ii zaaga’iganiing izhichigewin gaawin daa-wanichigesiiwag gegoo inashoweng.

Sustainable Development –

Naabiseg Ondaadiziwin – Giishin gegoo izhichigaadeg bagwadakamig gemaa gegoo odaapinigaadeg ondaadiziwining onji, neyaab naabise iwe ondaadiziwin niigaan onji. Mii ezhibii’igaadeg onashowewin The Manitoba Sustainable Development.

Tenure –

Izhigaabawiwin – Onakonigewining izhisin giishin awiya gegoo ganawendawind, daabishkoo aki ji-bimitood, izhigaabawi’aa ji-onji-naagajitood, ji-babimendang daabishkoo gegoon eyaamagakin odakiing. Mitigoo,’ netaawigingin, nibiin, asiniwaadakin gegoon, mii dinoowikaan gegoon ji-babimendang.

Terms of Reference –

Gikinawaajigiizhwewin – Aabajichigaade gikinawaajigiizhwewin apii gegoo onashowaadeg, gaawin idash iwe izhi da-banitaagesiing gegoo dazhinjigaadeg.

Traditional Ecological Knowledge –

Gete-gikendaasowin – Ginwezhkamig gechiwaag ningoji ayaawaad awiyag, onagadendaanaawaa’ imaa eyaawaad. Gete-gikendaasowin aaniish odaabajitonaawaa’ babimaadiziwaad imaa nakeya’ii. Gakina gegoon imaa eyaamagakin onagadendaanaawaan daabishkoo awesiiya,’ gegoon aabajichigaadegin dago ayizhiwemaganinig imaa nakeya’ii. Zhigwa miinawaa ogikendaanaawaa’ aandi ji-andawenjigewaad, wegonen jinoojitoowaad, aandi ji-wanii’igewaad gakina gegoo ge-ondaadizingiban gechiwaag imaa nakeya’ii. Mii ezhi-niizhingin, gete-gikendaasowin zhigwa waabishkiiwe izhichigewin da-wiijiwaaganimaganoon jigwayakochigaadeg bagwadakamig zhigwa gaye ji-migoshkaajichigaadesinog. (Newsletter – Centre for Traditional Knowledge, Canadian Museum of Nature)

Traditional Ecological Mapping –

Aki-mazina’iganan – Noongom zhigwa ozhichigaadegin aki-mazina’iganan, bakaan odizhitoonaawaan. Noongom wiindamaagemaganoon aki-mazina’iganan aaniin weweni ezhinaagwak bagwadakamig aaniin igaye gaa-inaabajitoowaad gechiwaag imaa gaagii-bi-ayaanid daabishkoo anishinaabeg.

Da-zanagan idash ji-gigibii’igaadeg Gete-anishinaabeg gikendaasowin imaa mazina’iganing. Maagizhaa dash daa-wiiji’iwemagan naagadawenjiganaabik aabajichigaadeg bebakaan aaniish giga-izhi-waabandaan aki maziniseg. Nawaj igaye daa-wendan ji-aanjichigaadeg aki-mazina’igan giishin gegoon wii-meshkwajichigaademagak.

UNESCO – World Natural and Cultural Heritage Site –

Miziwekamig Gaa-naagajitoowaad Bagwadakamig zhigwa Izhitwaawin – Ingiwe The United Nations Educational, Scientific and Cultural Organization (UNESCO) gaa-inindwaa miziwekamig omaa wagidakamig obabaa-naagajitonaawaan akiin ji-migoshkaajichigaadesinogin zhigwa gaye gaagechiwaag imaa eyaanid ji-migoshkaaji’ aasiwindwaa ayizhitwaawaad. Obimosadaanaawaa’ gichi-onashowewin Convention Concerning the Protection of the World Cultural and Natural Heritage gaagii-onachigaadeg 1972. Gakina gegoon miziwekamig getenjigaadegin daabishkoo gegoon odaanaang gaagii-bi-ozhichigaadegin, getewangin waakaa’iganan, gegoon wenzhishingin, zhigwa miinawaa gegoon wiikaa ge-naabichigaadesinogin. Mii gaye miziwekamig bagwadakamig wendaadiziwaad bemaadiziwaad. Babaa-gagwedwewag miziwekamig giishin andawendaman gegoon gichi-inendaman ji-babaamenjigaadesinog gemaa ji-migoshkaajichigaadesinog, gidaa-gagwedwe ji-wiiji’ikwaa onatooyan iwe.

Watershed –

Maamawijiwan – Giishin bezhigwanong izhijiwangin ziibiin gemaa ziibiinsan, nitaa-maamawijiwanoon.

Wetlands –

Mashkiig zhiigwa Dootoobaan – Naanigoding bagwadakamig zhaabobimagan, mashkiig gemaa dootoobanong ikidom. Naanigoding aki nibiikaa, naanigoding michi-dootoobaa. Nanaandok gegoon bimaadanoon iwe dinoowikaaning naanigoding nibiing, ogidakamig gemaa jiiigaya’ii nakeya’ii dinoowikaaning ji-dazhiikemagakin.

Miziwekamig mikigaadewan idinoowikaanan akiin, bebakaan idash ayizhinaagwanoon, bebakaan miinawaa ayinigokwaawan.