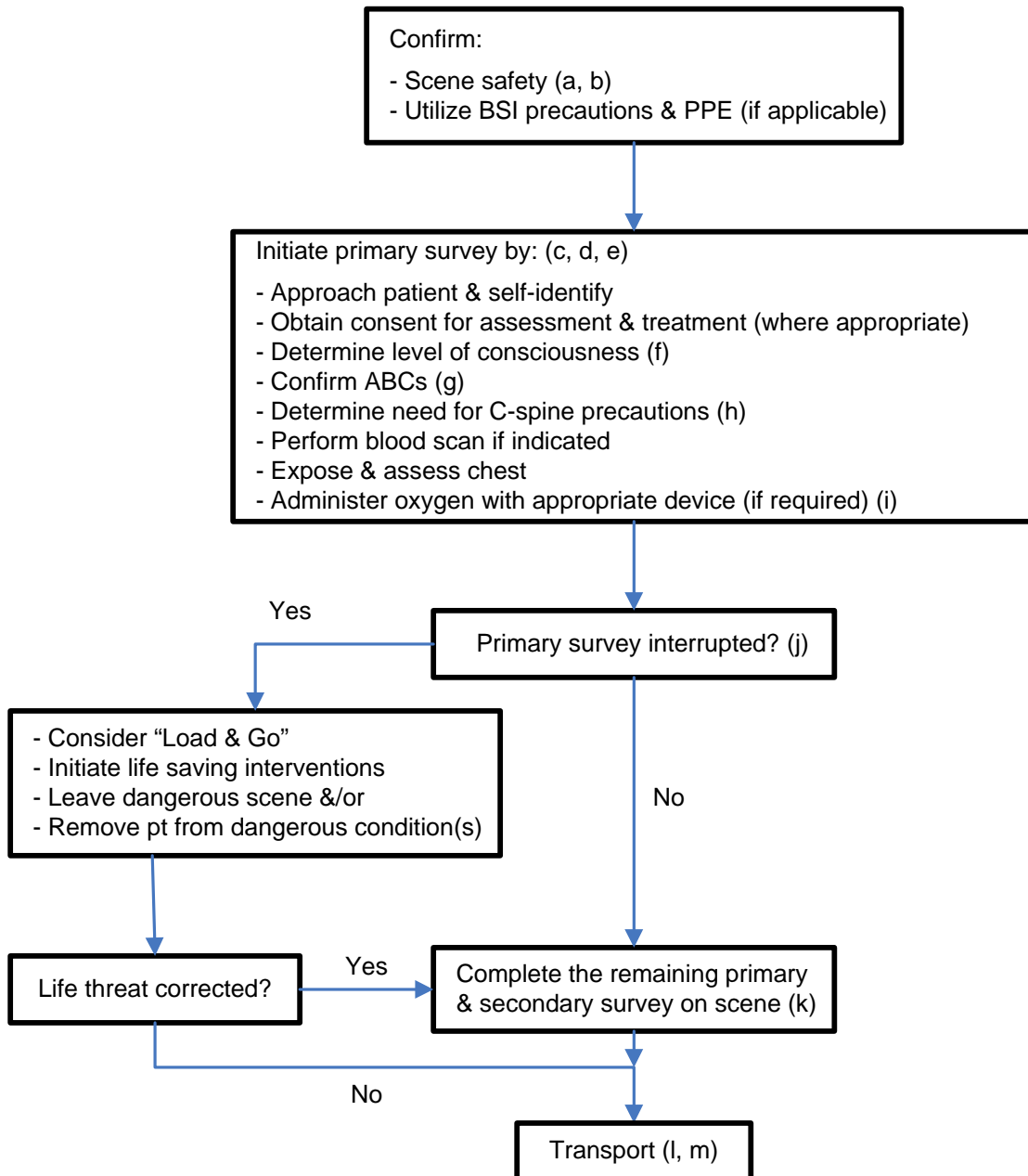


GENERAL: Primary Survey



Health and Healthy Living
Emergency Medical Services
Emergency Treatment Guidelines



GENERAL: Primary Survey

- a. Refer to appropriate Emergency Treatment Guideline for a complete description and/or application.
- b. Triage may be required if multiple patients are present and exceed current resources (see Triage Emergency Treatment Guideline).
- c. The primary survey (initial or rapid assessment) is a methodical process performed initially on every patient,. It is used to quickly identify immediate life threatening injuries and conditions that require intervention without delay. The primary survey should be completed promptly upon initial patient contact if no immediate life threatening injuries and conditions requiring intervention are found during the survey. The primary survey should be repeated at regular intervals (5 - 15 mins.) or when there is a change in the patient's status
- d. While the primary survey is underway, reassure the patient and keep them informed about assessments, treatments and other scene activities. Other members of the EMS team should gather as much pertinent patient information as possible which includes determining the presence of a health care directive or do not resuscitate order.
- e. EMS personnel should refer to The *Health Care Directives Act* for detailed information on health care directives, including definitions, making of directives, revocation of directives, proxies, and general provisions of this Act.
- f. Determine level of consciousness and responsiveness using the Glasgow Coma Scale or the "AVPU" (alert-verbal-pain-unresponsive) method.
- g. Manage ABC's as per appropriate Emergency Treatment Guideline.
- h. If a CNS injury is suspected based on the mechanism of injury (e.g. blunt trauma, fall from a height), the patient should be immobilized even if they have no signs and symptoms of CNS injuries.
- i. Assist ventilations if required and keep suction available at all times. There are no contraindications to providing high flow oxygen in the out-of-hospital environment.
- j. The primary survey should only be interrupted when a life threatening condition is identified and immediate life saving interventions must be initiated or the scene conditions require that the patient be moved immediately due to danger to EMS personnel or the patient. If the primary survey is interrupted, it should be completed as soon as possible.
- k. If injuries identified in primary are manageable and scene is safe the remaining surveys may be completed at the scene.
- l. On scene times should be kept to a minimum with transport to the nearest appropriate health care facility. Monitor, assess and treat en route, as per appropriate Emergency Treatment Guideline(s). Notify and report patient status and all findings to the receiving facility staff and document all actions on the patient care report including the decision to initiate load and go (if applicable).
- m. Other life threatening complications should be treated if possible and may need to be attended to while en route.