
Manitoba 

**Population Report
June 1, 2018**

Manitoba Health, Seniors and Active Living

Manitoba Health, Healthy Living and Seniors Population Report

June 1, 2018

Inquiries can be directed to:

**Manitoba Health, Healthy Living and Seniors
Health Information Management Branch**

Room 4040

300 Carlton Street

Winnipeg Manitoba R3B 3M9

Telephone: (204) 788-6354

2018 Population Publication Report - Contents

1 Introduction

Foreword

Population Changes June 1, 2017 to June 1, 2018

Deaths by Age (Fig. 1a)

Deaths by Age and Gender (Fig. 1b and 1c)

Migration In and Out of the Province by Age (Fig. 2a)

Migration In and Out of the Province by Age and Gender (Fig. 2b and 2c)

2 Population of Manitoba – June 1, 2018

Population of Manitoba by Age and Gender

Population of Manitoba by Age (Fig. 3a)

Population of Manitoba by Age and Gender (Fig. 3b and 3c)

Map of Manitoba RHA Boundaries (Fig. 4)

Population of Manitoba by RHA, Age, and Gender

Population of Manitoba First Nations, by RHA, Age and On/Off Reserve Status

Population of Manitoba by RHA, 2014 – 2018

Percent of Population by RHA, 2014 and 2018 (Fig. 5)

Population of Manitoba by RHA (Age 65+), 2014 – 2018

Percent of Population by RHA (Age 65+), 2014 – 2018 (Fig. 6)

3 Population of Regional Health Authorities – June 1, 2018

Interlake-Eastern RHA

Population by District, Age, and Gender

Population by District, 2014 – 2018

Population by District (Age 65+), 2014 – 2018

Population by Municipality, Age, and Gender

Population by Municipality, 2014 – 2018

Population by Municipality (Age 65+), 2014 – 2018

Northern RHA

Population by District, Age, and Gender

Population by District, 2014 – 2018

Population by District (Age 65+), 2014 – 2018

Population by Municipality, Age, and Gender

Population by Municipality, 2014 – 2018

Population by Municipality (Age 65+), 2014 – 2018

Prairie Mountain Health

Population by District, Age, and Gender

Population by District, 2014 – 2018

Population by District (Age 65+), 2014 – 2018

Population by Municipality, Age, and Gender

Population by Municipality, 2014 – 2018

Population by Municipality (Age 65+), 2014 – 2018

3 Manitoba Population by RHA – June 1, 2018 (cont.)

Southern Health-Santé Sud

Population by District, Age, and Gender

Population by District, 2014 – 2018

Population by District (Age 65+), 2014 – 2018

Population by Municipality, Age, and Gender

Population by Municipality, 2014 – 2018

Population by Municipality (Age 65+), 2014 – 2018

Winnipeg RHA

Map of Winnipeg Community Area Boundaries (Figure 7)

Population by Community Area, Neighborhood Cluster, Age, and Gender

Population by Municipality, Age, and Gender

Population by Municipality, 2014 – 2018

Population by Municipality (Age 65+), 2014 – 2018

Part 1

Manitoba Population Report – 2018

Introduction and Overview

FOREWORD

The population data shown in this report are based on records of residents registered with Manitoba Health as at June 1, 2018.

Data for the regions include population of cities, towns, villages, rural municipalities, local government districts, and unorganized territories. It should be noted that villages and towns are separately identified if these are incorporated. If unincorporated, the population counts are included in the rural municipality in which these are located.

Population for small areas (for example, a rural town) can be biased because the mailing address may be reported as the place of residence. An individual residing outside the town, but having a mailing address there, may be counted as living within the town. This bias in the population figures is reduced as the catchment area increases. Thus, regional estimates are not significantly affected by the mis-classification bias. Fluctuations from year to year for these small areas might also be affected by changes to mail delivery locations assigned by Canada Post.

The type of place indicates First Nations, unorganized territory, and municipal status of incorporated places (city, town, village, rural municipality, and local government district). The following list indicates the abbreviations used for types of places:

FN	First Nation Band
LGD	Local Government District - a designated area having no local government; administered by the province through a resident administrator.
R.H.A.	Regional Health Authority
RM	Rural Municipality

POPULATION REPORTING CHANGES

Current-year and five-year populations for RHA Districts were tabulated using the RHA District definitions current as of June 1st, 2018.

As of the 2018 population reports, international students within Manitoba without Canadian residency are no longer included in this report's population. This change brings the populations in this report in alignment with changes in policy enacted in 2018 regarding health care coverage. Please note that this change means that the population data up to and including 2017, and population data from 2018 and beyond, are measuring populations which are not identically defined. In particular, this change results in significant decreases in measured populations for the ages and areas with a significant proportion of international students.

Canada Post has now implemented new postal codes specific to the community of Ste. Genevieve. Before this change, the residents of this community previously were part of Ste. Anne's Rural Route #2, and could not be distinguished for population purposes from the rest of the Manitoba residents on this Rural Route. Because residents of Ste. Genevieve could not be distinguished from the Manitoba residents on Rural Route #2, they were previously reported as part of the population of the RM of Ste. Anne; as of the 2018 population reports, they will more correctly be reported as part of the population of the RM of Tache.

Internal improvements affecting population reporting have enabled more appropriate identification of on-reserve residents of some First Nations communities, as of the 2018 population reports.

MUNICIPAL AMALGAMATIONS

A series of municipal amalgamations, which were enacted between November 2013 and May 2014, came into effect as of January 1st, 2015. The 2018 population reports use the amalgamated municipalities, because these municipalities are the municipalities defined at the population date. Populations by pre-amalgamation municipality were provided as an appendix to the 2015 population reports; these pre-amalgamation populations have not been provided in the 2018 reports, however, and will not be provided as part of population reports for future years either.

Population Changes

The purpose of this section is to highlight changes in the population of Manitoba. Changes are determined by comparing the registration file for the current year to that of the previous year. A file is created for additions (residents on the current file but not on the previous file) and one for deletions (residents on the previous file and not on the current file). After determining reason for coverage or cancellation, those coded as deaths, births and other⁽¹⁾ are separated, leaving only arrivals and departures. The deletions are subtracted from the additions with a resulting net migration.

Figures 1a, 1b, and 1c depict the actual number of residents cancelled from the registration system upon notification of death during the period June 1, 2017 to June 1, 2018. Figures 1b and 1c are female and male profiles.

Figures 2a, 2b, and 2c represent population migration. In-migration and out-migration with a resulting net migration trend line are depicted. Manitoba gained population through in-migration between June 1, 2017 and June 1, 2018. There were 26,765 in-migrants and 21,251 out-migrants resulting in a net in-migration of 5,514. Figures 2b and 2c are the female and male trends.

Please note that international students within Manitoba without Canadian residency are no longer included in this report's population as of the 2018 population reports. (This change brings the populations in this report in alignment with changes in policy enacted in 2018 regarding health care coverage.) International students within Manitoba whose population status changed from resident to non-resident as a result of this change have accordingly been tabulated as out-migrants in the 2018 population reports even though they remain in the province with student status.

(1) Member of the Armed Forces, inmate of a penitentiary, or not located.

Figure 1a

Number of Deaths by Single Year of Age - June 1, 2017 to June 1, 2018

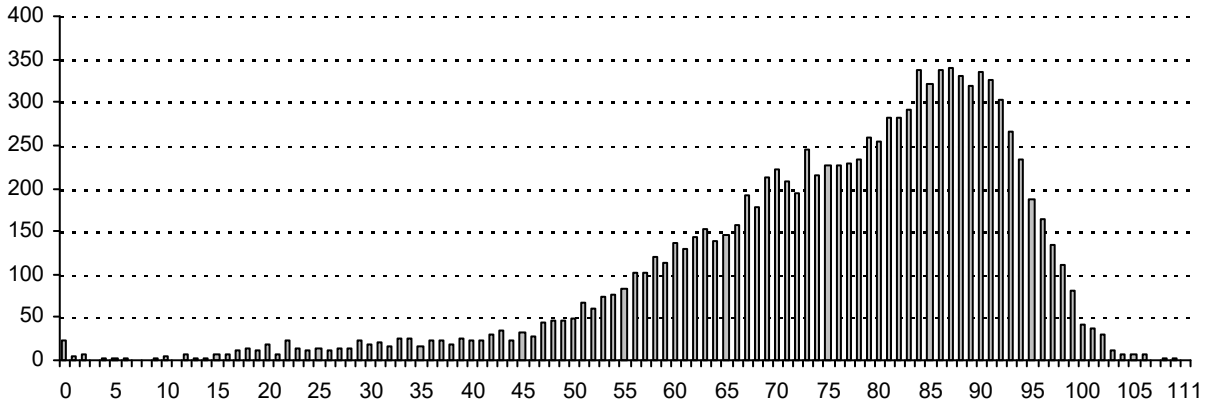


Figure 1b

Number of Female Deaths by Single Year of Age - June 1, 2017 to June 1, 2018

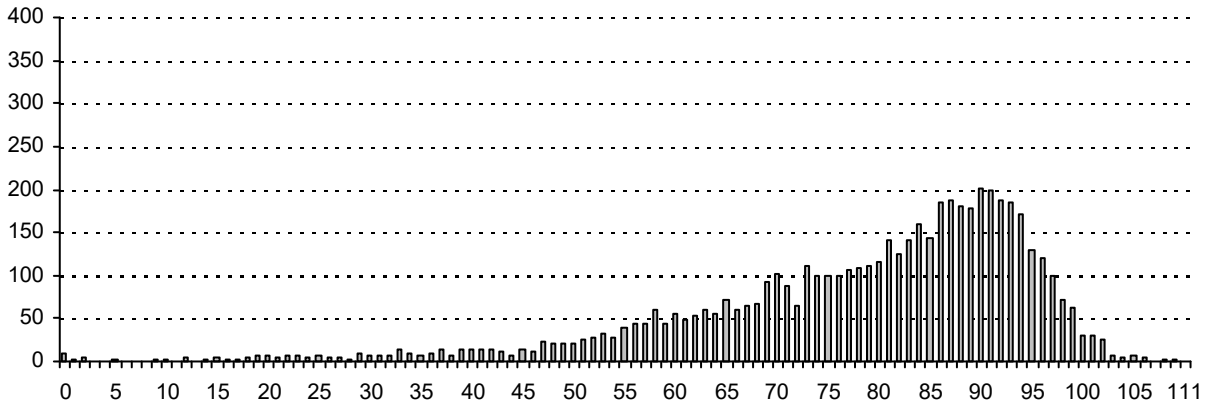


Figure 1c

Number of Male Deaths by Single Year of Age - June 1, 2017 to June 1, 2018

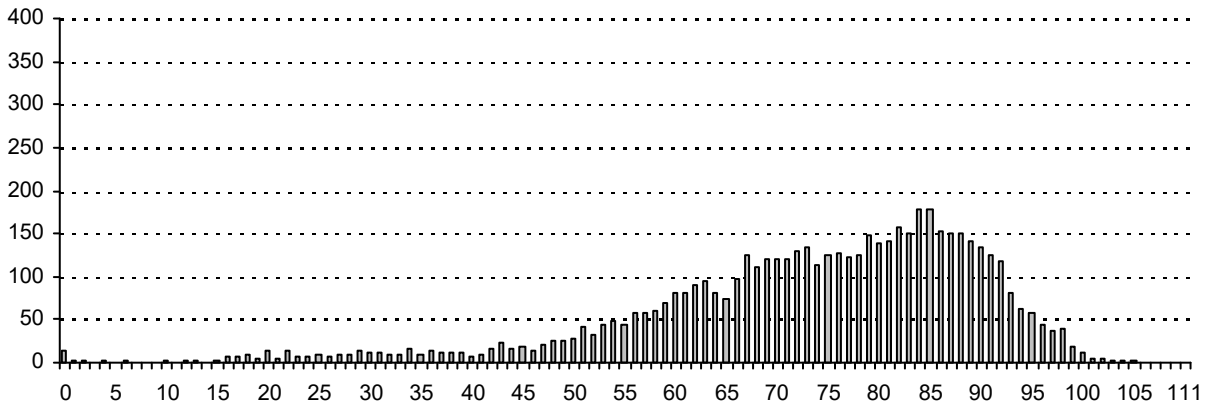


Figure 2a

Total Migration In and Out of the Province and Net Migration by Single Year of Age - June 1, 2017 to June 1, 2018

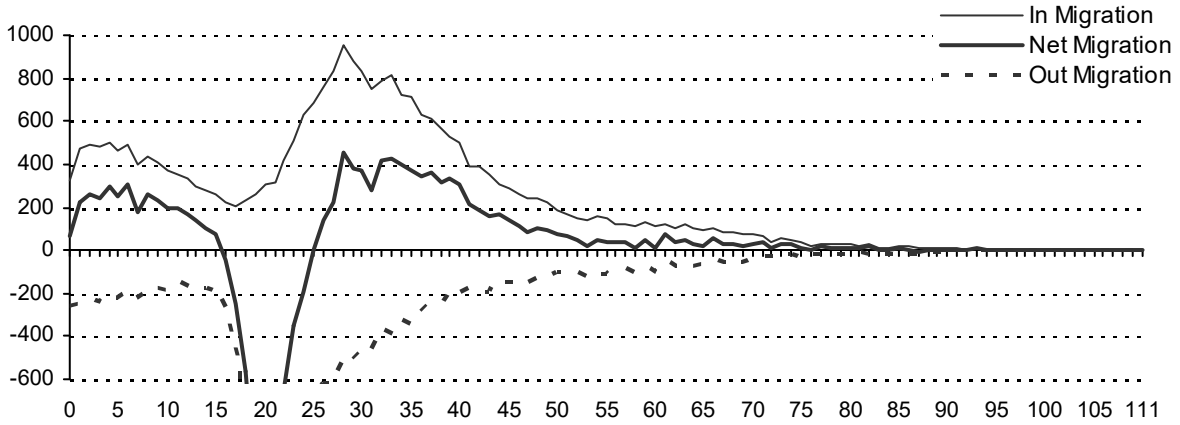


Figure 2b

Migration In and Out of the Province and Net Migration of Females by Single Year of Age - June 1, 2017 to June 1, 2018

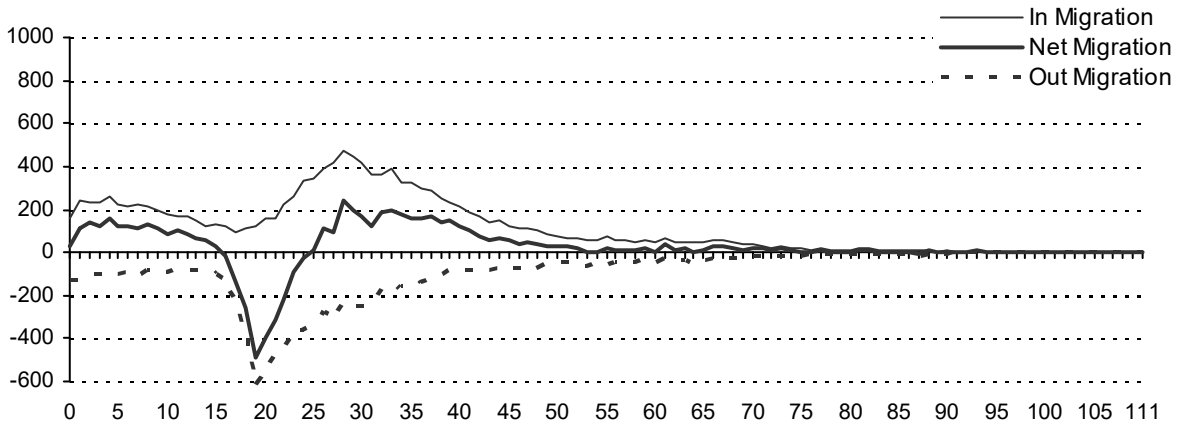
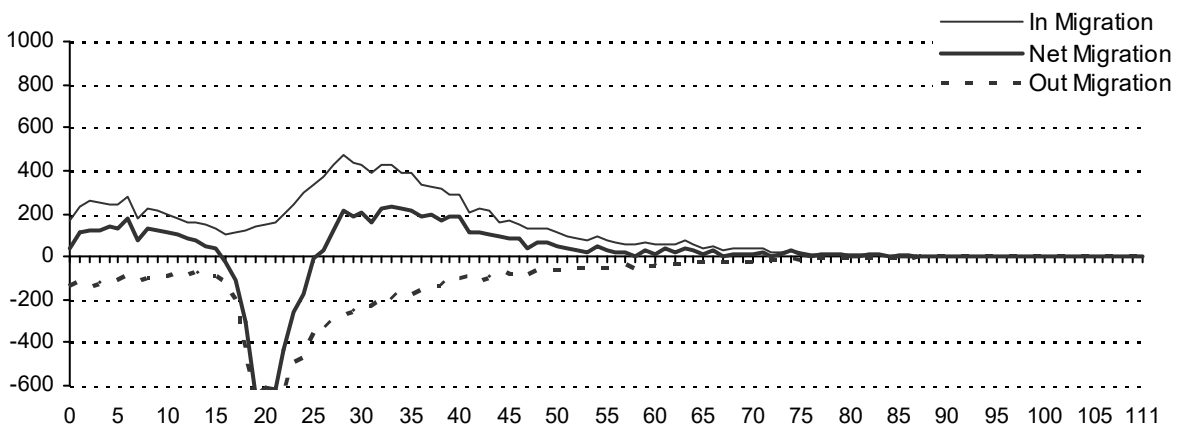


Figure 2c

Migration In and Out of the Province and Net Migration of Males by Single Year of Age - June 1, 2017 to June 1, 2018



This page intentionally left blank

Part 2

Population of Manitoba

June 1, 2018

Population of Manitoba by single year of age and gender

Age	Total	Male	Female
Under 1	17,147	8,908	8,239
1	17,035	8,664	8,371
2	17,394	8,962	8,432
3	17,450	9,014	8,436
4	17,458	9,051	8,407
Sub-Total	86,484	44,599	41,885
5	17,751	9,142	8,609
6	17,442	8,936	8,506
7	17,396	8,945	8,451
8	17,760	9,045	8,715
9	17,834	9,024	8,810
Sub-Total	88,183	45,092	43,091
10	17,543	9,041	8,502
11	17,202	8,708	8,494
12	16,536	8,477	8,059
13	16,184	8,321	7,863
14	16,398	8,366	8,032
Sub-Total	83,863	42,913	40,950
15	16,237	8,382	7,855
16	16,271	8,454	7,817
17	16,541	8,524	8,017
18	16,957	8,738	8,219
19	16,964	8,758	8,206
Sub-Total	82,970	42,856	40,114
20	17,066	8,801	8,265
21	17,546	9,055	8,491
22	18,348	9,345	9,003
23	19,059	9,706	9,353
24	19,470	10,058	9,412
Sub-Total	91,489	46,965	44,524
25	19,220	9,731	9,489
26	19,525	9,795	9,730
27	19,612	9,683	9,929
28	19,713	9,817	9,896
29	19,277	9,574	9,703
Sub-Total	97,347	48,600	48,747
30	19,001	9,404	9,597
31	19,288	9,629	9,659
32	19,303	9,562	9,741
33	19,249	9,563	9,686
34	19,067	9,505	9,562
Sub-Total	95,908	47,663	48,245
35	18,866	9,393	9,473
36	18,594	9,285	9,309
37	18,366	9,120	9,246
38	18,053	8,990	9,063
39	17,671	8,798	8,873
Sub-Total	91,550	45,586	45,964
40	17,546	8,745	8,801
41	17,188	8,489	8,699
42	17,305	8,715	8,590
43	17,125	8,586	8,539
44	16,631	8,407	8,224
Sub-Total	85,795	42,942	42,853

Total Population

Age	Total	Male	Female
45	16,824	8,518	8,306
46	17,113	8,580	8,533
47	17,222	8,559	8,663
48	16,929	8,483	8,446
49	16,668	8,425	8,243
Sub-Total	84,756	42,565	42,191
50	16,364	8,324	8,040
51	16,180	8,027	8,153
52	17,303	8,703	8,600
53	18,358	9,121	9,237
54	18,654	9,405	9,249
Sub-Total	86,859	43,580	43,279
55	18,820	9,391	9,429
56	18,685	9,361	9,324
57	18,594	9,391	9,203
58	18,388	9,298	9,090
59	17,389	8,683	8,706
Sub-Total	91,876	46,124	45,752
60	17,258	8,584	8,674
61	16,827	8,353	8,474
62	16,155	8,142	8,013
63	16,201	8,043	8,158
64	15,547	7,670	7,877
Sub-Total	81,988	40,792	41,196
65	14,602	6,971	7,631
66	14,010	6,936	7,074
67	13,422	6,405	7,017
68	12,973	6,317	6,656
69	12,520	6,024	6,496
Sub-Total	67,527	32,653	34,874
70	12,418	5,936	6,482
71	12,225	5,897	6,328
72	9,993	4,687	5,306
73	9,150	4,412	4,738
74	8,896	4,315	4,581
Sub-Total	52,682	25,247	27,435
75	8,497	3,978	4,519
76	7,440	3,459	3,981
77	7,313	3,288	4,025
78	6,496	2,936	3,560
79	6,203	2,800	3,403
Sub-Total	35,949	16,461	19,488
80	5,903	2,659	3,244
81	5,269	2,291	2,978
82	5,150	2,176	2,974
83	4,677	1,971	2,706
84	4,394	1,869	2,525
Sub-Total	25,393	10,966	14,427
85	4,119	1,669	2,450
86	3,930	1,511	2,419
87	3,433	1,259	2,174
88	3,174	1,180	1,994
89	2,737	961	1,776
Sub-Total	17,393	6,580	10,813

Male **Female** **File Status at:**

Age	Male	Female	File Status at:
90	905	1,666	June 1, 2018
91	625	1,351	
92	536	1,228	
93	453	1,098	
94	303	890	
Sub-Total	2,822	6,233	
95	247	702	
96	196	569	
97	123	435	
98	82	282	
99	52	183	
Sub-Total	700	2,171	
100	37	140	
101	25	118	
102	19	60	
103	12	59	
104	9	28	
Sub-Total	102	405	
105	12	16	
106	4	11	
107	2	6	
108	3	5	
109	1	5	
Sub-Total	22	43	
110	3	1	
111	0	0	
112	1	1	
113	1	0	
114	0	0	
Sub-Total	7	2	
115+	1	0	
Total Population	675,836	684,682	684,682

Age Group	Total	Male	Female
0-17	307,579	157,964	149,615
18-64	841,489	422,313	419,176
65-79	156,158	74,361	81,797
80+	55,292	21,198	34,094
Sub-Total	1,360,518	675,836	684,682
65+	211,450	95,559	115,891
70+	143,923	62,906	81,017
85+	29,899	10,232	19,667
90+	12,506	3,652	8,854
Sub-Total	258,530	132,604	125,926
15-24	174,459	89,821	84,638
25-34	193,255	96,263	96,992
35-44	177,345	88,528	88,817
45-54	171,615	86,145	85,470
55-64	173,864	86,916	86,948
65-74	120,209	57,900	62,309
75+	91,241	37,659	53,582

Figure 3a

Manitoba Health Population by Single Year of Age, June 1, 2018

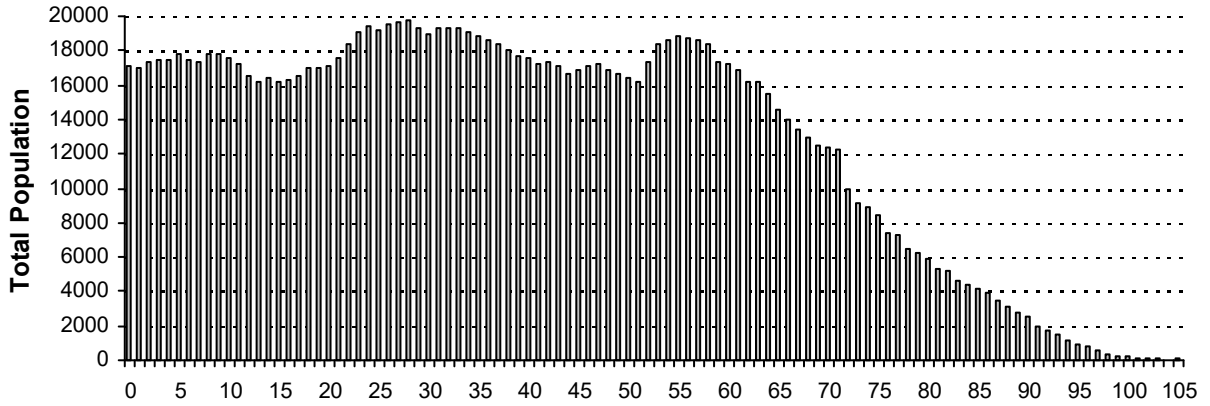


Figure 3b

Manitoba Health Female Population by Single Year of Age, June 1, 2018

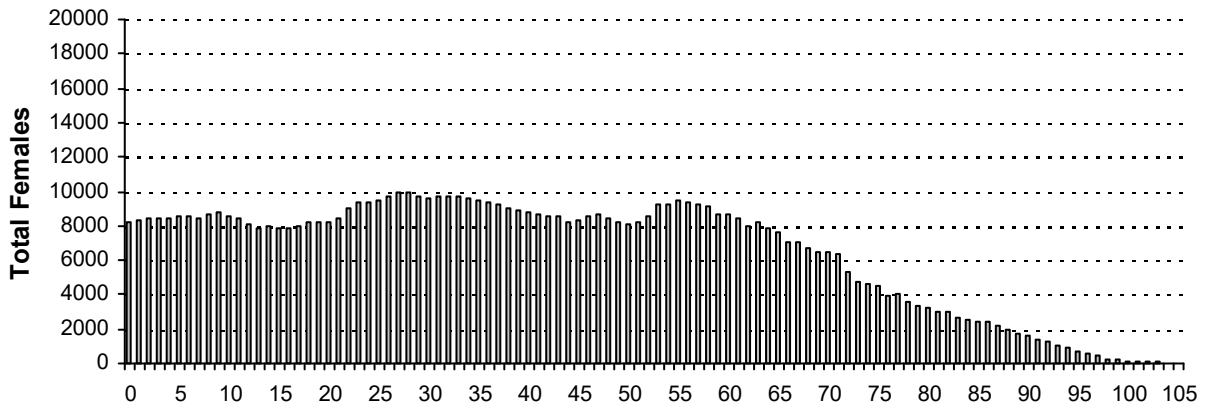
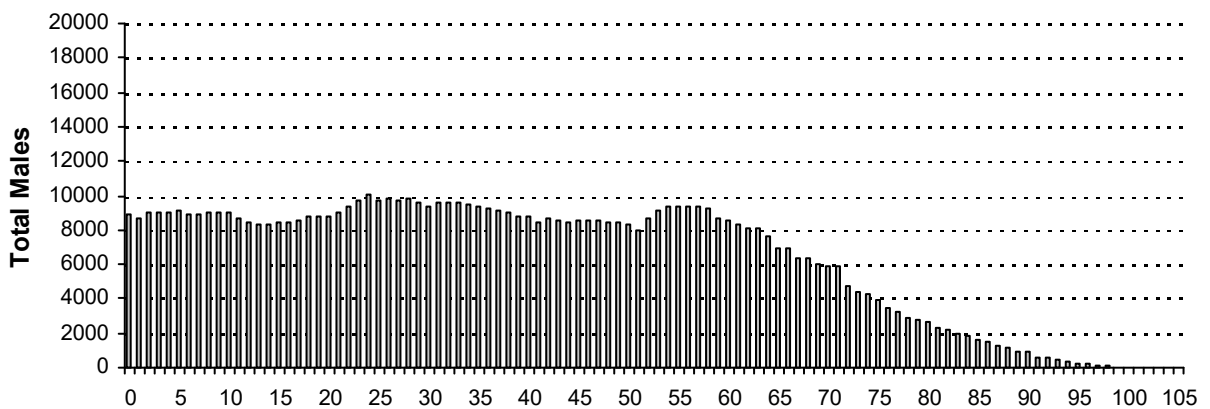
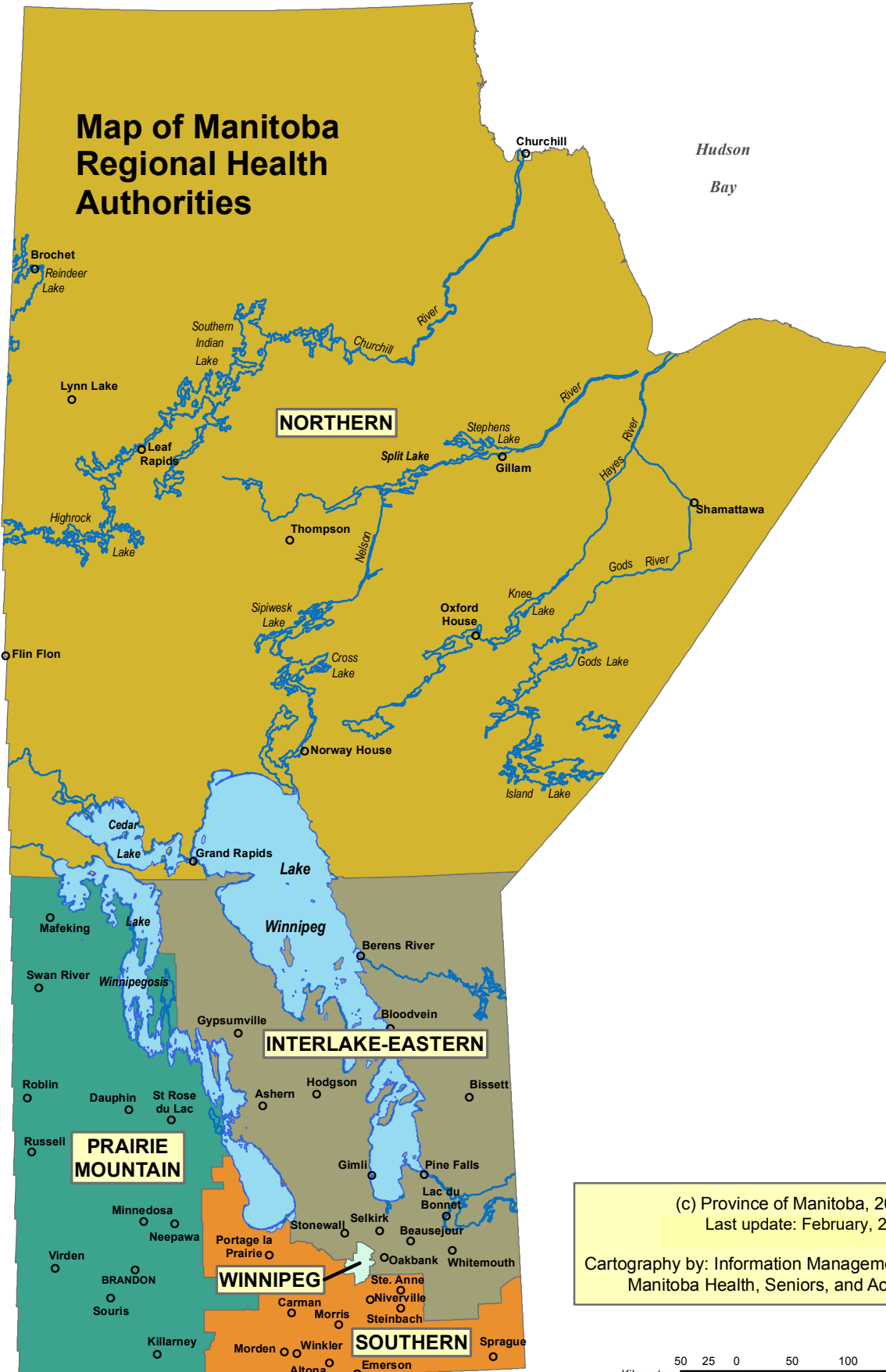


Figure 3c

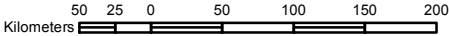
Manitoba Health Male Population by Single Year of Age, June 1, 2018



Map of Manitoba Regional Health Authorities



(c) Province of Manitoba, 2019
 Last update: February, 2019
 Cartography by: Information Management & Analytics,
 Manitoba Health, Seniors, and Active Living



Population of Manitoba by Regional Health Authority (R.H.A.)(1), Gender, and Age Group - June 1, 2018

R.H.A.	Gender	Under 1	1 - 4	5 - 9	10 - 14	15 - 19	20 - 24	25 - 29	30 - 34	35 - 39	40 - 44	45 - 49	50 - 54	55 - 59	60 - 64	65 - 69	70 - 74	75 +	Total
01 - Winnipeg Health Region																			
F		4,247	16,983	22,007	21,317	21,525	25,515	29,531	29,614	28,270	26,050	25,243	25,339	26,404	23,628	20,549	16,257	32,553	395,032
M		4,574	17,940	23,031	22,335	23,024	26,633	29,288	29,141	27,929	25,781	25,371	25,558	26,313	22,836	18,234	13,892	21,327	383,207
T		8,821	34,923	45,038	43,652	44,549	52,148	58,819	58,755	56,199	51,831	50,614	50,897	52,717	46,464	38,783	30,149	53,880	778,239
02 - Prairie Mountain Health Region																			
F		1,010	4,334	5,400	5,183	4,827	5,234	5,569	5,599	5,360	5,022	4,861	5,068	5,834	5,670	4,855	3,915	8,374	86,115
M		1,138	4,515	5,829	5,388	5,150	5,403	5,535	5,503	5,368	5,077	4,873	4,966	5,795	5,545	4,706	3,857	6,136	84,784
T		2,148	8,849	11,229	10,571	9,977	10,637	11,104	11,102	10,728	10,099	9,734	10,034	11,629	11,215	9,561	7,772	14,510	170,899
03 - Interlake-Eastern Health Region																			
F		732	2,987	3,794	3,675	3,804	3,842	3,734	3,648	3,487	3,545	4,060	4,819	5,292	4,766	4,007	3,164	4,982	64,338
M		765	3,146	3,979	3,890	4,000	4,323	3,915	3,752	3,485	3,695	4,094	4,690	5,432	5,110	4,131	3,240	4,274	65,921
T		1,497	6,133	7,773	7,565	7,804	8,165	7,649	7,400	6,972	7,240	8,154	9,509	10,724	9,876	8,138	6,404	9,256	130,259
04 - Northern Health Region																			
F		750	3,135	3,812	3,421	3,012	2,931	3,114	2,628	2,259	2,143	2,176	2,085	1,904	1,568	1,073	742	990	37,743
M		860	3,327	3,930	3,563	3,156	3,093	3,016	2,610	2,232	2,272	2,228	2,247	2,056	1,703	1,157	816	838	39,104
T		1,610	6,462	7,742	6,984	6,168	6,024	6,130	5,238	4,491	4,415	4,404	4,332	3,960	3,271	2,230	1,558	1,828	76,847
05 - Southern Health-Santé Sud Region																			
F		1,500	6,207	8,078	7,354	6,946	7,002	6,799	6,756	6,588	6,093	5,851	5,968	6,318	5,564	4,390	3,357	6,683	101,454
M		1,571	6,763	8,323	7,737	7,526	7,513	6,846	6,657	6,572	6,117	5,999	6,119	6,528	5,598	4,425	3,442	5,084	102,820
T		3,071	12,970	16,401	15,091	14,472	14,515	13,645	13,413	13,160	12,210	11,850	12,087	12,846	11,162	8,815	6,799	11,767	204,274
Manitoba																			
F		8,239	33,646	43,091	40,950	40,114	44,524	48,747	48,245	45,964	42,853	42,191	43,279	45,752	41,196	34,874	27,435	53,582	684,682
M		8,908	35,691	45,092	42,913	42,856	46,965	48,600	47,663	45,586	42,942	42,565	43,580	46,124	40,792	32,653	25,247	37,659	675,836
T		17,147	69,337	88,183	83,863	82,970	91,489	97,347	95,908	91,550	85,795	84,756	86,859	91,876	81,988	67,527	52,682	91,241	1,360,518
F		1,244	5,071	6,088	5,654	4,637	4,598	4,688	3,714	3,087	2,833	2,881	2,632	2,109	1,493	971	630	727	53,057
M		1,375	5,296	6,418	5,775	4,770	4,703	4,274	3,504	2,939	2,593	2,523	2,368	1,942	1,330	886	553	546	51,795
T		2,619	10,367	12,506	11,429	9,407	9,301	8,962	7,218	6,026	5,426	5,404	5,000	4,051	2,823	1,857	1,183	1,273	104,852

(1) First nations residents are allocated to municipality and RHA by postal code. Summary includes all First Nations people regardless of where they reside.

Population by Regional Health Authority (1), First Nations On/Off Reserve, and Age Group - June 1, 2018

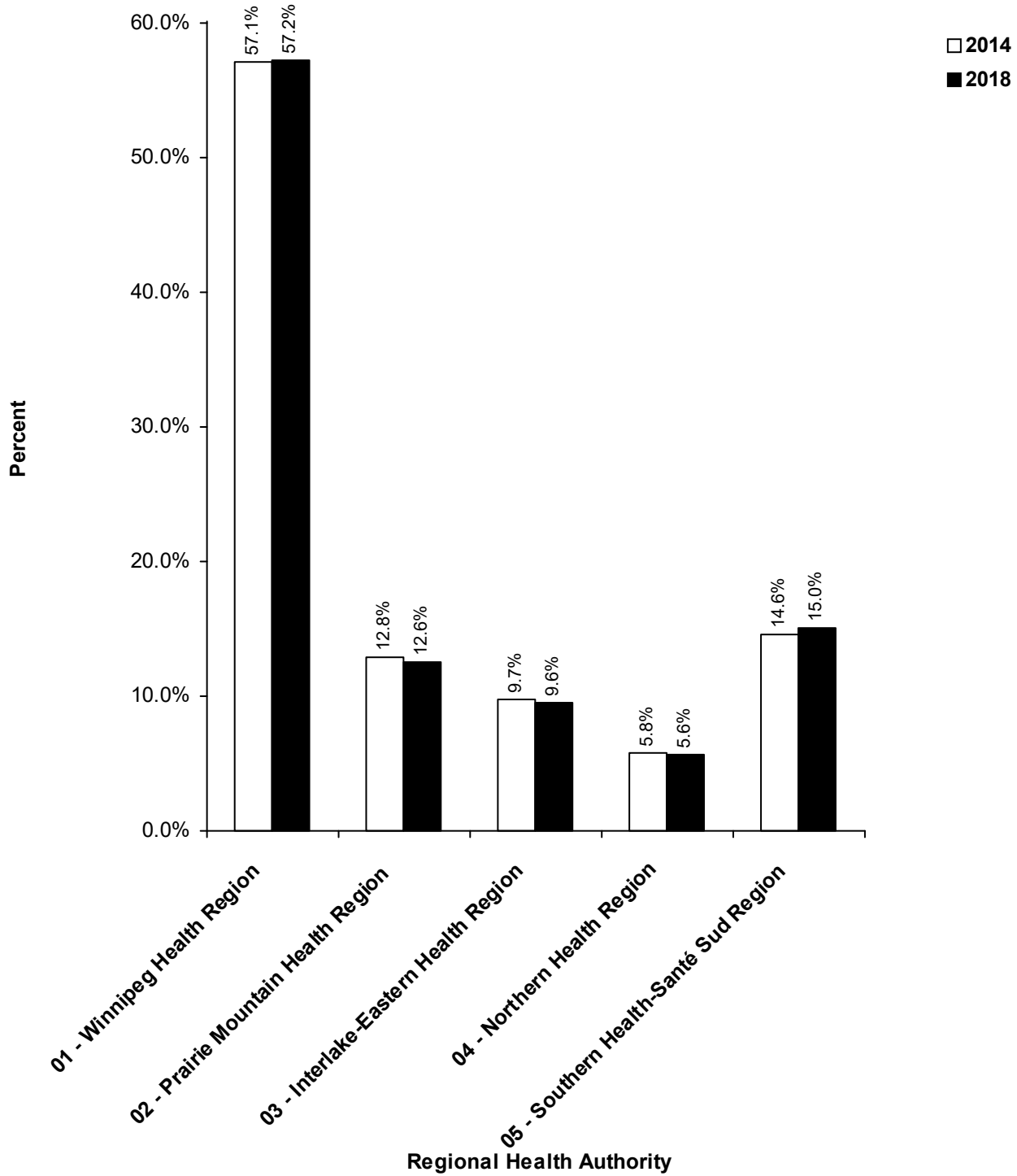
R.H.A.	Gender	Under 1	1 - 4	5 - 9	10 - 14	15 - 19	20 - 24	25 - 29	30 - 34	35 - 39	40 - 44	45 - 49	50 - 54	55 - 59	60 - 64	65 - 69	70 - 74	75 +	Total
01 – Winnipeg Health Region																			
	On	0	0	0	0	0	0	0	0	0	0	0	0	0	0	0	0	0	0
	Off	710	2,784	3,350	3,287	2,679	2,760	2,690	2,121	1,842	1,522	1,441	1,320	942	584	424	246	234	28,936
	T	710	2,784	3,350	3,287	2,679	2,760	2,690	2,121	1,842	1,522	1,441	1,320	942	584	424	246	234	28,936
02 – Prairie Mountain Health Region																			
	On	131	506	654	592	479	417	450	370	301	303	323	320	290	200	128	101	99	5,664
	Off	153	636	770	642	492	581	547	497	401	283	256	253	199	139	84	44	61	6,038
	T	284	1,142	1,424	1,234	971	998	997	867	702	586	579	573	489	339	212	145	160	11,702
03 – Interlake-Eastern Health Region																			
	On	272	976	1,287	1,102	987	973	904	733	672	633	732	715	672	436	300	211	219	11,824
	Off	79	304	348	315	284	340	301	244	193	170	188	162	130	96	67	37	43	3,301
	T	351	1,280	1,635	1,417	1,271	1,313	1,205	977	865	803	920	877	802	532	367	248	262	15,125
04 – Northern Health Region																			
	On	808	3,321	3,835	3,509	2,918	2,652	2,663	2,088	1,629	1,678	1,685	1,505	1,255	935	607	404	478	31,970
	Off	289	1,087	1,316	1,095	825	863	767	644	559	428	406	372	270	204	110	70	61	9,366
	T	1,097	4,408	5,151	4,604	3,743	3,515	3,430	2,732	2,188	2,106	2,091	1,877	1,525	1,139	717	474	539	41,336
05 – Southern Health-Santé Sud Region																			
	On	105	389	515	495	394	359	349	278	250	222	226	216	186	151	85	49	47	4,316
	Off	72	364	431	392	349	356	291	243	179	187	147	137	107	78	52	21	31	3,437
	T	177	753	946	887	743	715	640	521	429	409	373	353	293	229	137	70	78	7,753
Manitoba																			
	On	1,316	5,192	6,291	5,698	4,778	4,401	4,366	3,469	2,852	2,836	2,966	2,756	2,403	1,722	1,120	765	843	53,774
	Off	1,303	5,175	6,215	5,731	4,629	4,900	4,596	3,749	3,174	2,590	2,438	2,244	1,648	1,101	737	418	430	51,078
	T	2,619	10,367	12,506	11,429	9,407	9,301	8,962	7,218	6,026	5,426	5,404	5,000	4,051	2,823	1,857	1,183	1,273	104,852

(1) First nations residents are allocated to municipality and RHA by postal code. Summary includes all First Nations people regardless of where they reside.

Summary of Provincial Population by Regional Health Authority

Regional Health Authority	2014	2015	2016	2017	2018
Winnipeg Health Region	745,603	754,389	767,543	779,366	778,239
Prairie Mountain Health Region	167,842	168,477	169,760	170,688	170,899
Interlake-Eastern Health Region	126,674	127,273	128,105	129,037	130,259
Northern Health Region	75,349	75,947	76,424	76,845	76,847
Southern Health-Santé Sud Region	190,841	194,257	197,476	201,025	204,274
Provincial Total	1,306,309	1,320,343	1,339,308	1,356,961	1,360,518

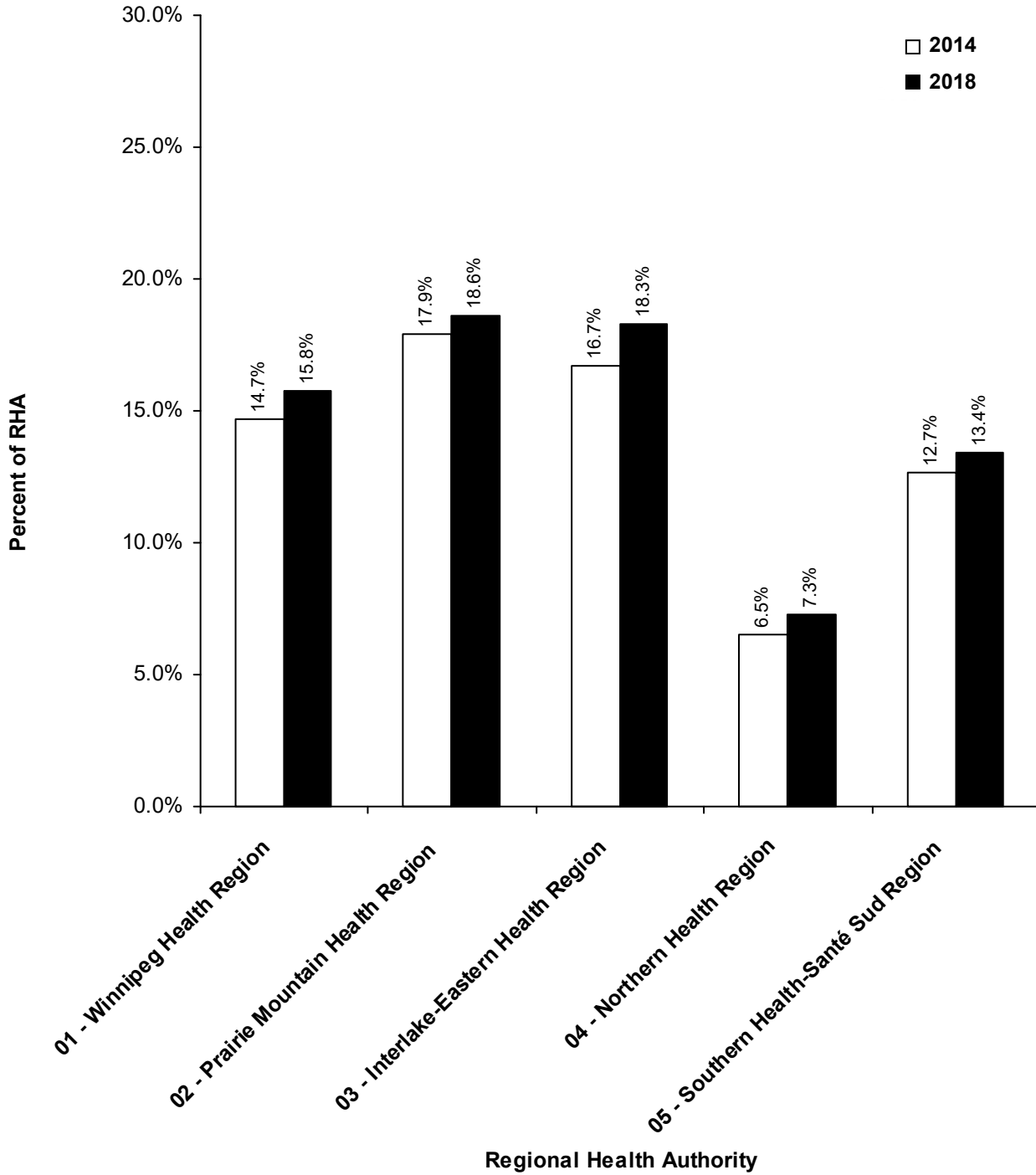
Figure 5
Percent of Population for Regional Health Authority
June 1, 2014 and 2018



Summary of Provincial Population by Regional Health Authority**Age Group 65+**

Regional Health Authority	2014	2015	2016	2017	2018
Winnipeg Health Region	109,364	112,306	115,656	119,324	122,812
Prairie Mountain Health Region	30,033	30,346	30,944	31,240	31,843
Interlake-Eastern Health Region	21,163	21,775	22,293	22,983	23,798
Northern Health Region	4,926	5,089	5,273	5,456	5,616
Southern Health-Santé Sud Region	24,178	24,871	25,699	26,485	27,381
Provincial Total	189,664	194,387	199,865	205,488	211,450

Figure 6
Percent of Population for Age Group 65+ by
Regional Health Authority
June 1, 2014 and 2018



Part 3

Population of Regional Health Authorities

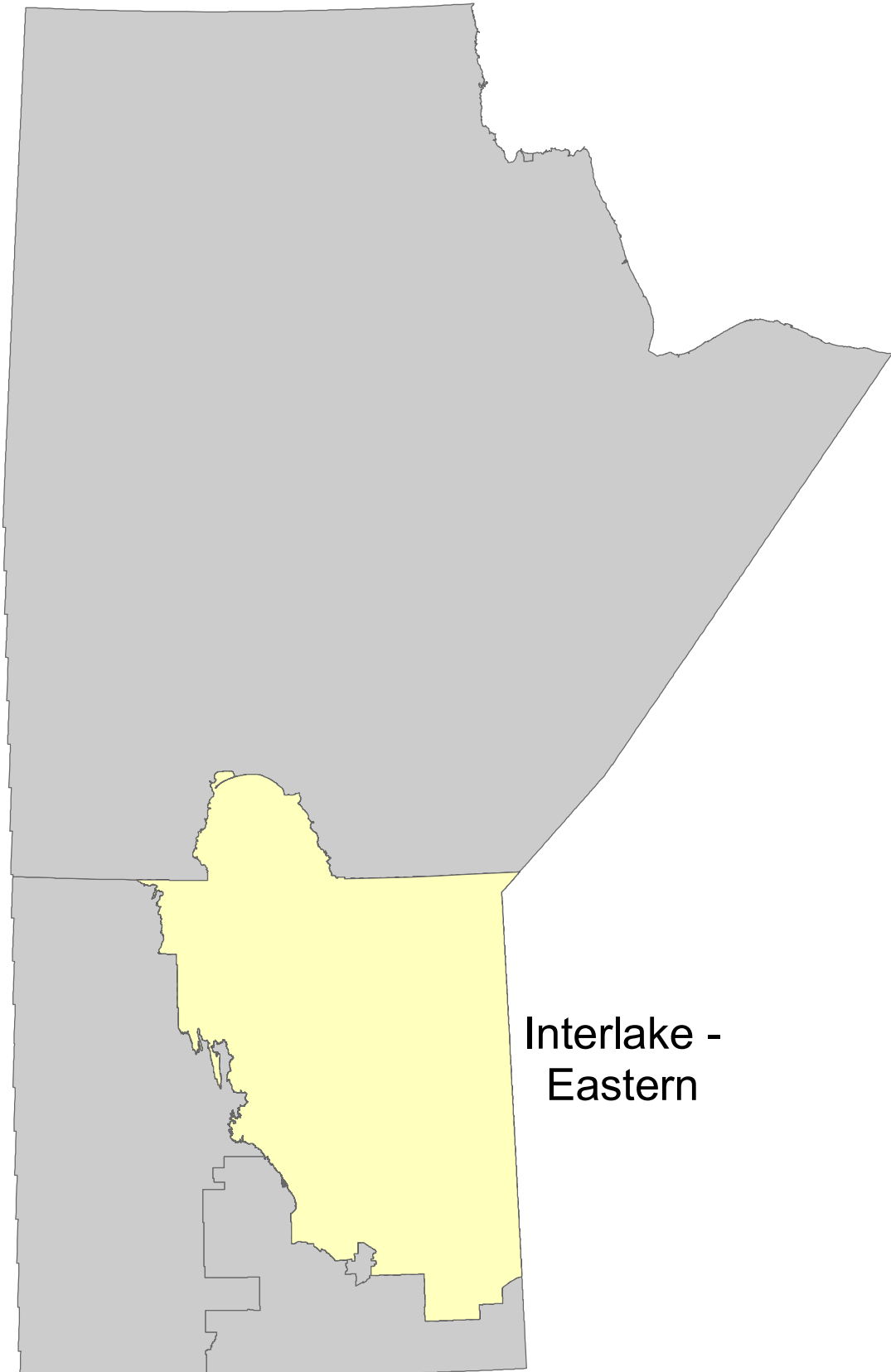
June 1, 2018

This page intentionally left blank

Population of Interlake-Eastern RHA

June 1, 2018

Manitoba RHAs -- Interlake-Eastern



Interlake -
Eastern

Manitoba Health, Healthy Living and Seniors Population Report - June 1, 2018

Interlake-Eastern Health Region

District	Gender	Under 1	1 - 4	5 - 9	10 - 14	15 - 19	20 - 24	25 - 29	30 - 34	35 - 39	40 - 44	45 - 49	50 - 54	55 - 59	60 - 64	65 - 69	70 - 74	75 +	Total
Interlake-Eastern East Zone																			
Beausejour																			
	F	46	207	251	229	277	269	302	317	299	290	289	304	399	294	263	219	415	4,670
	M	47	241	269	268	271	321	300	326	306	341	319	335	368	371	266	203	332	4,884
Pinawa/Lac du Bonnet																			
	F	34	113	132	170	173	141	157	147	139	138	218	280	425	433	432	352	481	3,965
	M	28	117	166	154	160	170	181	165	143	163	211	258	427	469	431	373	489	4,105
Whiteshell																			
	F	14	54	60	77	56	83	69	75	72	55	69	112	126	144	120	88	108	1,382
	M	12	65	58	64	86	69	85	85	72	73	90	95	168	159	129	112	120	1,542
	F	94	374	443	476	506	493	528	539	510	483	576	696	950	871	815	659	1,004	10,017
	M	87	423	493	486	517	560	566	576	521	577	620	688	963	999	826	688	941	10,531

Interlake-Eastern North Zone

Eriksdale/Ashern																			
	F	63	231	240	232	207	217	244	201	147	155	188	226	195	216	155	123	250	3,290
	M	59	210	281	208	218	277	212	216	173	182	212	201	228	206	187	125	193	3,388
Fisher/Peguis																			
	F	64	240	314	272	238	251	251	194	173	182	212	228	238	178	120	120	190	3,465
	M	81	269	325	266	232	288	258	242	180	176	193	248	241	201	142	126	138	3,606
Powerview/Pine Falls																			
	F	59	209	239	262	269	226	194	180	166	163	168	191	184	193	147	95	127	3,072
	M	53	179	240	291	281	268	203	180	189	180	169	216	212	175	161	97	129	3,223
	F	186	680	793	766	714	694	689	575	486	500	568	645	617	587	422	338	567	9,827
	M	193	658	846	765	731	833	673	638	542	538	574	665	681	582	490	348	460	10,217

Interlake-Eastern Northern Remote Zone

Northern Remote																			
	F	53	224	260	198	169	153	177	122	111	87	114	92	94	54	29	16	29	1,982
	M	71	208	251	212	177	184	176	118	116	115	129	110	96	76	41	23	13	2,116
	F	53	224	260	198	169	153	177	122	111	87	114	92	94	54	29	16	29	1,982
	M	71	208	251	212	177	184	176	118	116	115	129	110	96	76	41	23	13	2,116

Manitoba Health, Healthy Living and Seniors Population Report - June 1, 2018

Interlake-Eastern Health Region

District	Gender	Under 1	1 - 4	5 - 9	10 - 14	15 - 19	20 - 24	25 - 29	30 - 34	35 - 39	40 - 44	45 - 49	50 - 54	55 - 59	60 - 64	65 - 69	70 - 74	75 +	Total
Interlake-Eastern Selkirk Zone																			
Selkirk																			
	F	49	218	273	261	304	337	364	324	308	252	334	373	403	368	327	298	743	5,536
	M	49	235	251	283	296	335	363	342	271	255	290	301	357	336	286	231	430	4,911
	F	49	218	273	261	304	337	364	324	308	252	334	373	403	368	327	298	743	5,536
	M	49	235	251	283	296	335	363	342	271	255	290	301	357	336	286	231	430	4,911
Interlake-Eastern South Zone																			
Springfield																			
	F	77	363	460	446	447	417	404	482	475	524	493	602	584	536	419	272	352	7,353
	M	80	377	497	443	508	463	418	434	506	509	508	581	609	547	440	314	353	7,587
St. Clements																			
	F	45	142	209	252	244	282	215	209	245	254	317	405	426	332	282	220	226	4,305
	M	34	167	214	240	277	306	235	224	226	253	319	444	456	402	286	233	236	4,552
Stonewall/Teulon																			
	F	84	401	603	533	551	563	564	602	574	609	636	736	812	622	545	420	743	9,598
	M	98	450	642	582	562	641	605	607	539	590	623	699	789	715	542	414	595	9,693
Wpg Beach/St. Andrews																			
	F	69	289	369	389	477	500	405	419	443	492	598	770	808	680	546	422	510	8,186
	M	64	272	381	460	509	565	468	416	409	493	612	710	846	771	601	463	528	8,568
	F	275	1,195	1,641	1,620	1,719	1,762	1,588	1,712	1,737	1,879	2,044	2,513	2,630	2,170	1,792	1,334	1,831	29,442
	M	276	1,266	1,734	1,725	1,856	1,975	1,726	1,681	1,680	1,845	2,062	2,434	2,700	2,435	1,869	1,424	1,712	30,400

Manitoba Health, Healthy Living and Seniors Population Report - June 1, 2018

Interlake-Eastern Health Region

District	Gender	Under 1	1 - 4	5 - 9	10 - 14	15 - 19	20 - 24	25 - 29	30 - 34	35 - 39	40 - 44	45 - 49	50 - 54	55 - 59	60 - 64	65 - 69	70 - 74	75 +	Total
Interlake-Eastern West Zone																			
Arborg/Riverton																			
	F	34	152	166	152	170	168	158	144	129	127	130	153	149	170	136	115	199	2,452
	M	42	155	187	189	189	173	174	161	123	132	145	160	176	160	140	100	157	2,563
Gimli																			
	F	24	76	115	103	119	127	111	131	119	113	179	194	281	362	338	288	432	3,112
	M	23	105	112	113	106	128	122	129	132	125	136	194	260	329	307	295	390	3,006
St. Laurent																			
	F	17	68	103	99	103	108	119	101	87	104	115	153	168	184	148	116	177	1,970
	M	24	96	105	117	128	135	115	107	100	108	138	138	199	193	172	131	171	2,177
	F	75	296	384	354	392	403	388	376	335	344	424	500	598	716	622	519	808	7,534
	M	89	356	404	419	423	436	411	397	355	365	419	492	635	682	619	526	718	7,746
RHA Sub-Total (Sex)																			
	F	732	2,987	3,794	3,675	3,804	3,842	3,734	3,648	3,487	3,545	4,060	4,819	5,292	4,766	4,007	3,164	4,982	64,338
	M	765	3,146	3,979	3,890	4,000	4,323	3,915	3,752	3,485	3,695	4,094	4,690	5,432	5,110	4,131	3,240	4,274	65,921
RHA Total		1,497	6,133	7,773	7,565	7,804	8,165	7,649	7,400	6,972	7,240	8,154	9,509	10,724	9,876	8,138	6,404	9,256	130,259

Interlake-Eastern Health Region

District	2014	2015	2016	2017	2018
Interlake-Eastern East Zone					
Beausejour	9,039	9,148	9,257	9,453	9,554
Pinawa/Lac du Bonnet	7,908	7,844	7,923	7,989	8,070
Whiteshell	2,998	2,978	2,963	2,943	2,924
Interlake-Eastern North Zone					
Eriksdale/Ashern	6,425	6,285	6,329	6,335	6,678
Fisher/Peguis	6,712	6,773	6,853	6,972	7,071
Powerview/Pine Falls	6,456	6,407	6,350	6,348	6,295
Interlake-Eastern Northern Remote Zone					
Northern Remote	3,903	3,972	3,995	3,977	4,098
Interlake-Eastern Selkirk Zone					
Selkirk	10,013	10,132	10,248	10,408	10,447
Interlake-Eastern South Zone					
Springfield	14,066	14,364	14,598	14,683	14,940
St. Clements	8,492	8,539	8,656	8,765	8,857
Stonewall/Teulon	19,065	19,139	19,163	19,295	19,291
Wpg Beach/St. Andrews	16,587	16,672	16,696	16,746	16,754
Interlake-Eastern West Zone					
Arborg/Riverton	4,909	4,949	4,936	4,988	5,015
Gimli	5,982	5,961	6,012	6,015	6,118
St. Laurent	4,119	4,110	4,126	4,120	4,147
R.H.A. Total	126,674	127,273	128,105	129,037	130,259

Note: Manitoba Health Districts are defined by the RHAs, and are subject to change over time. For comparability, all populations have been tabulated using current district definitions, even if different definitions were in use during that population's year.

Interlake-Eastern Health Region	Age Group 65+				
	District	2014	2015	2016	2017
Interlake-Eastern East Zone					
Beausejour	1,507	1,549	1,553	1,634	1,698
Pinawa/Lac du Bonnet	2,287	2,333	2,389	2,486	2,558
Whiteshell	635	643	660	654	677
Interlake-Eastern North Zone					
Eriksdale/Ashern	989	1,003	1,002	1,008	1,033
Fisher/Peguis	769	776	785	808	836
Powerview/Pine Falls	672	669	683	714	756
Interlake-Eastern Northern Remote Zone					
Northern Remote	138	140	143	150	151
Interlake-Eastern Selkirk Zone					
Selkirk	2,080	2,148	2,194	2,268	2,315
Interlake-Eastern South Zone					
Springfield	1,828	1,947	1,995	2,044	2,150
St. Clements	1,295	1,340	1,400	1,452	1,483
Stonewall/Teulon	2,826	2,904	2,981	3,126	3,259
Wpg Beach/St. Andrews	2,591	2,694	2,836	2,946	3,070
Interlake-Eastern West Zone					
Arborg/Riverton	823	840	845	834	847
Gimli	1,862	1,906	1,951	1,968	2,050
St. Laurent	861	883	876	891	915
R.H.A. Total	21,163	21,775	22,293	22,983	23,798

Note: Manitoba Health Districts are defined by the RHAs, and are subject to change over time. For comparability, all populations have been tabulated using current district definitions, even if different definitions were in use during that population's year.

Manitoba Health, Healthy Living and Seniors Population Report - June 1, 2018

Interlake-Eastern Health Region

Municipality	Gender	Under 1	1 - 4	5 - 9	10 - 14	15 - 19	20 - 24	25 - 29	30 - 34	35 - 39	40 - 44	45 - 49	50 - 54	55 - 59	60 - 64	65 - 69	70 - 74	75 +	Total
ALEXANDER RM																			
	F	7	36	35	44	44	27	45	41	31	26	42	58	95	91	94	64	74	854
	M	7	40	45	41	25	41	45	41	32	41	43	54	101	92	92	67	78	885
ARBORG TOWN																			
	F	24	105	98	88	66	86	104	97	73	68	59	58	46	65	36	41	89	1,203
	M	32	117	126	86	97	78	75	96	61	70	70	53	61	43	33	35	55	1,188
ARMSTRONG RM																			
	F	5	25	33	33	41	41	45	28	32	36	46	51	53	74	42	44	60	689
	M	8	36	41	36	60	45	45	38	29	38	53	47	73	67	61	45	54	776
BEAUSEJOUR TOWN																			
	F	27	125	160	147	194	183	196	207	191	191	198	219	267	197	186	152	314	3,154
	M	30	157	169	170	200	237	207	224	195	230	219	223	236	242	181	142	233	3,295
BIFROST-RIVERTON MUN																			
	F	10	47	68	64	104	82	54	47	56	59	70	95	103	105	100	74	110	1,248
	M	10	38	61	102	92	95	99	65	62	62	75	106	115	117	107	65	102	1,373
BROKENHEAD RM																			
	F	19	82	91	82	83	86	106	110	108	99	91	85	132	97	77	67	101	1,516
	M	17	84	100	98	71	84	93	102	111	111	100	112	132	129	85	61	99	1,589
COLDWELL RM																			
	F	5	17	31	32	35	27	41	33	28	33	24	45	50	41	40	37	72	591
	M	12	27	33	40	35	47	37	38	37	38	37	34	55	52	45	38	60	665
DUNNOTTAR VILLAGE																			
	F	0	0	0	2	1	1	0	2	1	0	1	1	4	4	2	5	12	36
	M	0	0	0	0	3	2	0	0	2	0	3	2	2	5	4	2	8	33
FISHER RM																			
	F	24	88	104	93	99	104	91	62	70	63	75	75	98	87	55	59	112	1,359
	M	36	93	103	89	81	111	91	80	63	68	71	98	93	84	66	61	76	1,364
GIMLI RM																			
	F	24	76	115	103	119	127	111	131	119	113	179	194	281	362	338	288	432	3,112
	M	23	105	112	113	106	128	122	129	132	125	136	194	260	329	307	295	390	3,006
GRAHAMDALE RM																			
	F	18	54	59	64	57	59	66	62	32	41	47	68	64	73	39	40	66	909
	M	12	53	69	45	47	80	58	54	41	51	52	63	83	68	58	42	64	940

Manitoba Health, Healthy Living and Seniors Population Report - June 1, 2018

Interlake-Eastern Health Region

Municipality	Gender	Under 1	1 - 4	5 - 9	10 - 14	15 - 19	20 - 24	25 - 29	30 - 34	35 - 39	40 - 44	45 - 49	50 - 54	55 - 59	60 - 64	65 - 69	70 - 74	75 +	Total
LAC DU BONNET RM																			
	F	1	5	9	9	16	27	15	8	13	15	24	43	61	43	55	48	98	490
	M	1	9	15	17	24	30	31	17	22	17	27	42	59	61	44	47	103	566
LAC DU BONNET TOWN																			
	F	21	47	69	81	72	60	68	64	60	63	104	119	172	206	174	130	152	1,662
	M	13	43	64	68	75	64	67	63	59	67	96	105	181	208	191	155	143	1,662
PINAWA LGD																			
	F	5	20	19	34	34	23	21	30	31	32	38	38	73	75	73	86	127	759
	M	6	22	35	28	32	30	33	39	25	32	36	41	64	76	79	73	141	792
POWERVIEW-PINE FALLS TOWN																			
	F	22	82	69	80	88	67	68	82	58	58	56	64	70	59	57	39	74	1,093
	M	17	52	70	100	86	103	59	68	67	59	50	77	72	69	55	34	55	1,093
REYNOLDS RM																			
	F	3	10	16	20	13	21	16	21	25	16	24	31	50	49	38	23	30	406
	M	5	19	18	23	24	21	26	30	19	17	30	37	54	44	41	35	44	487
ROCKWOOD RM																			
	F	23	126	184	171	160	188	174	191	195	186	212	228	288	213	216	163	184	3,102
	M	33	141	212	177	162	190	196	199	185	209	181	244	284	289	221	149	193	3,265
ROSSER RM																			
	F	2	23	34	36	44	30	31	28	35	27	43	51	52	45	35	26	45	587
	M	5	27	22	29	33	52	49	32	33	38	51	43	56	45	40	34	38	627
SELKIRK CITY																			
	F	49	218	273	261	304	337	364	324	308	252	334	373	403	368	327	298	743	5,536
	M	49	235	251	283	296	335	363	342	271	255	290	301	357	336	286	231	430	4,911
SPRINGFIELD RM																			
	F	77	363	460	446	447	417	404	482	475	524	493	602	584	536	419	272	352	7,353
	M	80	377	497	443	508	463	418	434	506	509	508	581	609	547	440	314	353	7,587
ST ANDREWS RM																			
	F	67	267	333	368	441	470	377	373	402	463	558	701	716	573	433	359	421	7,322
	M	57	253	357	423	472	529	448	389	369	462	558	649	764	668	486	393	449	7,726
ST CLEMENTS RM																			
	F	39	135	203	241	239	274	207	203	237	246	308	399	413	329	279	218	221	4,191
	M	33	161	206	232	265	296	226	212	213	245	312	434	443	394	282	230	235	4,419

Manitoba Health, Healthy Living and Seniors Population Report - June 1, 2018

Interlake-Eastern Health Region

Municipality	Gender	Under 1	1 - 4	5 - 9	10 - 14	15 - 19	20 - 24	25 - 29	30 - 34	35 - 39	40 - 44	45 - 49	50 - 54	55 - 59	60 - 64	65 - 69	70 - 74	75 +	Total
ST LAURENT RM																			
	F	7	26	39	34	27	40	33	40	27	35	45	57	65	69	66	35	45	690
	M	4	33	31	41	33	43	33	31	34	32	48	57	71	74	66	48	57	736
STONEWALL TOWN																			
	F	30	143	213	184	175	188	196	190	193	226	220	259	261	187	146	129	295	3,235
	M	23	148	228	213	196	226	177	187	177	190	228	227	231	184	142	102	193	3,072
TEULON TOWN																			
	F	7	32	64	58	62	47	47	66	52	67	63	81	75	48	54	38	112	973
	M	14	41	72	53	61	69	61	56	47	44	61	67	77	64	40	42	63	932
UNORG. TERRITORIES - INTERLAKE																			
	F	6	31	31	26	26	24	25	25	17	21	23	29	23	16	13	20	17	373
	M	4	35	27	32	24	37	22	24	16	15	18	28	27	28	19	12	18	386
UNORG. TERRITORIES - NORTH EASTMAN																			
	F	25	89	92	91	72	81	84	60	58	51	60	62	73	110	70	43	53	1,174
	M	32	91	108	95	88	73	99	69	67	72	70	94	85	91	92	59	63	1,348
VICTORIA BEACH RM																			
	F	0	5	0	2	7	4	8	4	4	2	10	22	24	18	36	24	30	200
	M	1	3	7	0	4	5	5	5	5	6	9	16	22	32	25	31	24	200
WEST INTERLAKE MUN																			
	F	20	73	75	76	67	79	87	77	59	68	79	95	75	109	89	62	164	1,354
	M	24	74	78	74	95	103	91	90	67	64	85	73	98	112	98	65	111	1,402
WHITEMOUTH RM																			
	F	9	38	42	52	39	54	46	47	45	35	40	74	70	81	71	58	69	870
	M	7	44	34	40	57	44	53	47	44	52	49	53	101	97	77	67	68	934
WINNIPEG BEACH TOWN																			
	F	2	22	36	19	35	29	28	44	40	29	39	68	88	103	111	58	77	828
	M	7	19	24	37	34	34	20	27	38	31	51	59	80	98	111	68	71	809
WOODLANDS RM																			
	F	22	77	108	84	110	110	116	127	99	103	98	117	136	129	94	64	107	1,701
	M	23	93	108	110	110	104	122	133	97	109	102	118	141	133	99	87	108	1,797
Non-FN Sub-Total(Sex)																			
	F	600	2,487	3,163	3,125	3,321	3,393	3,274	3,306	3,174	3,248	3,703	4,462	4,965	4,562	3,865	3,064	4,858	58,570
	M	625	2,670	3,323	3,338	3,496	3,799	3,471	3,361	3,126	3,359	3,719	4,332	5,087	4,878	3,973	3,129	4,179	59,865

Manitoba Health, Healthy Living and Seniors Population Report - June 1, 2018

Interlake-Eastern Health Region

Municipality	Gender	Under 1	1 - 4	5 - 9	10 - 14	15 - 19	20 - 24	25 - 29	30 - 34	35 - 39	40 - 44	45 - 49	50 - 54	55 - 59	60 - 64	65 - 69	70 - 74	75 +	Total
BERENS RIVER FN																			
	F	6	42	59	39	32	34	39	24	23	15	22	23	20	9	6	4	4	401
	M	18	37	48	40	35	35	38	23	26	24	31	18	20	14	11	4	3	425
BLOODVEIN FN																			
	F	3	34	43	32	30	18	26	22	16	10	18	16	13	3	4	2	4	294
	M	6	40	36	29	24	24	21	15	16	17	20	12	14	11	4	3	1	293
BROKENHEAD FN																			
	F	6	7	6	11	5	8	8	6	8	8	9	6	13	3	3	2	5	114
	M	1	6	8	8	12	10	9	12	13	8	7	10	13	8	4	3	1	133
DAUPHIN RIVER FN																			
	F	0	2	3	2	0	2	3	2	2	1	1	2	3	0	0	1	3	27
	M	2	1	1	1	0	1	1	2	5	5	5	0	0	1	3	1	0	29
FAIRFORD FN																			
	F	10	42	41	44	40	36	32	29	24	17	28	29	18	16	12	9	10	437
	M	10	40	50	29	30	37	35	31	26	26	28	29	21	12	13	9	11	437
FISHER RIVER FN																			
	F	11	34	45	38	30	39	38	33	17	32	32	29	39	22	14	13	10	476
	M	11	45	56	34	33	45	40	35	26	26	37	37	37	31	16	16	10	535
FORT ALEXANDER FN																			
	F	23	66	101	106	99	90	61	56	57	57	56	63	49	41	27	19	14	985
	M	18	72	88	113	111	90	75	62	73	62	59	68	68	37	24	17	18	1,055
HOLLOW WATER FN																			
	F	5	17	18	24	28	24	20	12	16	16	6	17	17	13	8	3	5	249
	M	6	14	24	24	29	24	17	11	14	17	14	7	15	13	4	4	4	241
KINONJEOSHTEGON FN																			
	F	1	7	4	7	4	6	8	3	4	5	4	5	3	2	3	3	1	70
	M	2	10	7	5	8	5	5	4	3	3	5	4	2	1	2	4	3	73
LAKE MANITOBA FN																			
	F	10	25	31	24	20	23	26	16	15	17	20	11	13	8	9	6	3	277
	M	5	20	41	32	26	32	14	13	15	21	27	17	11	8	7	5	2	296
LAKE ST MARTIN FN																			
	F	4	10	22	11	10	10	15	13	8	3	8	13	12	2	3	4	4	152
	M	2	11	27	18	5	12	7	13	12	6	14	12	9	4	6	2	4	164

Manitoba Health, Healthy Living and Seniors Population Report - June 1, 2018

Interlake-Eastern Health Region

Municipality	Gender	Under 1	1 - 4	5 - 9	10 - 14	15 - 19	20 - 24	25 - 29	30 - 34	35 - 39	40 - 44	45 - 49	50 - 54	55 - 59	60 - 64	65 - 69	70 - 74	75 +	Total
LITTLE BLACK RIVER FN																			
	F	2	15	15	14	22	11	7	7	7	5	12	10	2	5	4	1	0	139
	M	3	11	17	10	10	18	7	7	6	7	9	5	5	3	8	1	1	128
LITTLE GRAND RAPIDS FN																			
	F	12	47	45	39	35	28	38	25	19	23	30	14	18	9	2	1	0	385
	M	13	40	57	49	31	42	35	25	23	19	22	25	22	12	4	1	1	421
LITTLE SASKATCHEWAN FN																			
	F	1	27	12	13	13	10	18	4	9	9	6	10	13	8	3	2	3	161
	M	6	12	16	10	15	13	7	15	12	14	6	7	6	2	5	2	1	149
PAUINGASSI FN																			
	F	8	24	22	9	15	16	24	6	12	10	13	8	9	4	2	3	3	188
	M	5	17	21	17	20	25	15	11	10	15	12	13	4	5	4	2	0	196
PEGUIS FN																			
	F	22	78	127	106	79	76	86	69	63	60	78	88	72	51	35	24	47	1,161
	M	26	85	131	106	86	89	99	97	67	59	57	82	82	56	36	32	31	1,221
POPLAR RIVER FN																			
	F	8	23	37	31	21	18	11	15	13	9	14	13	13	8	7	3	8	252
	M	6	15	28	27	29	22	19	15	12	7	22	12	16	14	7	5	4	260
FN Sub-Total(Sex)																			
	F	132	500	631	550	483	449	460	342	313	297	357	357	327	204	142	100	124	5,768
	M	140	476	656	552	504	524	444	391	359	336	375	358	345	232	158	111	95	6,056
RHA Sub-Total (Sex)																			
	F	732	2,987	3,794	3,675	3,804	3,842	3,734	3,648	3,487	3,545	4,060	4,819	5,292	4,766	4,007	3,164	4,982	64,338
	M	765	3,146	3,979	3,890	4,000	4,323	3,915	3,752	3,485	3,695	4,094	4,690	5,432	5,110	4,131	3,240	4,274	65,921
RHA Total																			
		1,497	6,133	7,773	7,565	7,804	8,165	7,649	7,400	6,972	7,240	8,154	9,509	10,724	9,876	8,138	6,404	9,256	130,259

Interlake-Eastern Health Region

Municipality	2014	2015	2016	2017	2018
ALEXANDER RM	1,724	1,725	1,732	1,760	1,739
ARBORG TOWN	2,107	2,196	2,241	2,333	2,391
ARMSTRONG RM	1,472	1,430	1,433	1,450	1,465
BEAUSEJOUR TOWN	5,945	6,080	6,177	6,344	6,449
BIFROST-RIVERTON MUN	2,799	2,750	2,692	2,652	2,621
BROKENHEAD RM	3,094	3,068	3,080	3,109	3,105
COLDWELL RM	1,278	1,285	1,273	1,236	1,256
DUNNOTTAR VILLAGE	87	82	77	74	69
FISHER RM	2,641	2,639	2,684	2,692	2,723
GIMLI RM	5,982	5,961	6,012	6,015	6,118
GRAHAMDALE RM	1,852	1,781	1,757	1,774	1,849
LAC DU BONNET RM	1,257	1,197	1,169	1,111	1,056
LAC DU BONNET TOWN	3,029	3,064	3,162	3,249	3,324
PINAWA LGD	1,519	1,485	1,478	1,485	1,551
POWerview-PINE FALLS TOWN	2,225	2,201	2,196	2,203	2,186
REYNOLDS RM	967	924	908	900	893
ROCKWOOD RM	6,588	6,551	6,432	6,506	6,367
ROSSER RM	1,279	1,250	1,262	1,233	1,214
SELKIRK CITY	10,013	10,132	10,248	10,408	10,447
SPRINGFIELD RM	14,066	14,364	14,598	14,683	14,940
ST ANDREWS RM	14,964	15,037	15,065	15,059	15,048
ST CLEMENTS RM	8,251	8,299	8,410	8,525	8,610
ST LAURENT RM	1,369	1,395	1,420	1,434	1,426
STONEWALL TOWN	5,939	6,016	6,118	6,172	6,307
TEULON TOWN	1,833	1,848	1,877	1,892	1,905
UNORG. TERRITORIES - INTERLAKE	702	729	720	737	759
UNORG. TERRITORIES - NORTH EAST	2,549	2,534	2,512	2,478	2,522
VICTORIA BEACH RM	379	373	382	384	400
WEST INTERLAKE MUN	2,693	2,695	2,749	2,753	2,756

Interlake-Eastern Health Region

Municipality	2014	2015	2016	2017	2018
WHITEMOUTH RM	1,769	1,801	1,792	1,803	1,804
WINNIPEG BEACH TOWN	1,536	1,553	1,554	1,613	1,637
WOODLANDS RM	3,426	3,474	3,474	3,492	3,498
Non-FN Sub-Total	115,334	115,919	116,684	117,559	118,435
BERENS RIVER FN	736	767	801	810	826
BLOODVEIN FN	572	594	602	577	587
BROKENHEAD FN	241	240	246	240	247
DAUPHIN RIVER FN	46	41	41	41	56
FAIRFORD FN	844	822	822	836	874
FISHER RIVER FN	955	962	982	1,003	1,011
FORT ALEXANDER FN	2,102	2,089	2,059	2,071	2,040
HOLLOW WATER FN	519	511	514	502	490
KINONJEOSHTEGON FN	121	134	137	148	143
LAKE MANITOBA FN	507	537	567	568	573
LAKE ST MARTIN FN	285	207	180	145	316
LITTLE BLACK RIVER FN	275	286	272	273	267
LITTLE GRAND RAPIDS FN	758	763	761	778	806
LITTLE SASKATCHEWAN FN	244	243	254	259	310
PAUINGASSI FN	371	377	382	377	384
PEGUIS FN	2,250	2,271	2,292	2,354	2,382
POPLAR RIVER FN	514	510	509	496	512
FN Sub-Total	11,340	11,354	11,421	11,478	11,824
R.H.A. Total	126,674	127,273	128,105	129,037	130,259

Interlake-Eastern Health Region**Age Group 65+**

Municipality	2014	2015	2016	2017	2018
ALEXANDER RM	412	418	424	439	469
ARBORG TOWN	306	309	302	293	289
ARMSTRONG RM	315	304	299	302	306
BEAUSEJOUR TOWN	1,059	1,087	1,093	1,152	1,208
BIFROST-RIVERTON MUN	517	531	543	541	558
BROKENHEAD RM	448	462	460	482	490
COLDWELL RM	281	291	282	285	292
DUNNOTTAR VILLAGE	44	39	36	35	33
FISHER RM	418	421	425	420	429
GIMLI RM	1,862	1,906	1,951	1,968	2,050
GRAHAMDALE RM	320	316	305	306	309
LAC DU BONNET RM	430	426	415	409	395
LAC DU BONNET TOWN	774	796	849	916	945
PINAWA LGD	512	526	525	547	579
POWerview-PINE FALLS TOWN	270	270	266	290	314
REYNOLDS RM	197	200	212	206	211
ROCKWOOD RM	988	1,025	1,049	1,115	1,126
ROSSER RM	191	200	203	204	218
SELKIRK CITY	2,080	2,148	2,194	2,268	2,315
SPRINGFIELD RM	1,828	1,947	1,995	2,044	2,150
ST ANDREWS RM	2,152	2,244	2,361	2,438	2,541
ST CLEMENTS RM	1,279	1,324	1,385	1,433	1,465
ST LAURENT RM	265	288	295	304	317
STONEWALL TOWN	828	852	865	913	1,007
TEULON TOWN	315	313	333	349	349
UNORG. TERRITORIES - INTERLAKE	87	91	89	93	99
UNORG. TERRITORIES - NORTH EAST	348	352	369	376	380
VICTORIA BEACH RM	159	167	176	175	170
WEST INTERLAKE MUN	556	571	580	577	589

Interlake-Eastern Health Region

Age Group 65+

Municipality	2014	2015	2016	2017	2018
WHITEMOUTH RM	378	382	385	389	410
WINNIPEG BEACH TOWN	395	411	439	473	496
WOODLANDS RM	504	514	531	545	559
Non-FN Sub-Total	20,518	21,131	21,636	22,287	23,068
BERENS RIVER FN	25	23	26	28	32
BLOODVEIN FN	16	16	14	16	18
BROKENHEAD FN	16	16	15	19	18
DAUPHIN RIVER FN	7	4	3	6	8
FAIRFORD FN	56	59	60	61	64
FISHER RIVER FN	71	72	80	82	79
FORT ALEXANDER FN	114	112	113	113	119
HOLLOW WATER FN	29	27	28	29	28
KINONJEOSHTEGON FN	13	13	13	14	16
LAKE MANITOBA FN	22	26	25	32	32
LAKE ST MARTIN FN	25	22	20	17	23
LITTLE BLACK RIVER FN	12	15	14	14	15
LITTLE GRAND RAPIDS FN	17	16	14	11	9
LITTLE SASKATCHEWAN FN	10	9	12	15	16
PAUINGASSI FN	12	12	15	16	14
PEGUIS FN	173	175	175	193	205
POPLAR RIVER FN	27	27	30	30	34
FN Sub-Total	645	644	657	696	730
R.H.A. Total	21,163	21,775	22,293	22,983	23,798

Population of Northern RHA

June 1, 2018

Manitoba RHAs -- Northern



Manitoba Health, Healthy Living and Seniors Population Report - June 1, 2018

Northern Health Region

District	Gender	Under 1	1 - 4	5 - 9	10 - 14	15 - 19	20 - 24	25 - 29	30 - 34	35 - 39	40 - 44	45 - 49	50 - 54	55 - 59	60 - 64	65 - 69	70 - 74	75 +	Total
Northern Direct Service Zone																			
Bay Line																			
	F	14	32	38	56	54	52	31	30	31	35	25	32	43	31	23	21	17	565
	M	17	50	59	48	57	57	47	28	39	37	32	42	35	38	30	17	24	657
Flin Flon/Snow Lake/Cranberry/Sheridon																			
	F	31	163	228	186	194	248	254	242	212	219	213	274	341	310	248	147	282	3,792
	M	33	185	216	209	220	223	257	227	225	236	224	253	376	382	251	194	203	3,914
Gillam/Fox Lake CN																			
	F	15	45	77	66	47	54	51	70	56	52	39	42	30	26	12	10	11	703
	M	14	49	63	61	52	63	61	58	68	53	42	49	33	34	12	7	11	730
Lynn/MC FN/Leaf/O-P FN (SIL)/PN FN (Granville)																			
	F	27	116	130	126	102	104	98	77	60	57	59	62	56	35	33	25	20	1,187
	M	24	136	130	134	106	96	88	79	66	68	68	77	55	54	34	21	26	1,262
The Pas/OCN/Kelsey																			
	F	65	352	459	412	414	392	420	386	353	325	358	333	358	328	235	154	227	5,571
	M	108	355	430	426	444	415	394	347	320	342	347	339	346	332	251	186	208	5,590
Thompson/Mystery Lake																			
	F	122	524	614	580	525	536	659	614	598	496	494	499	380	301	184	152	144	7,422
	M	126	512	658	574	534	552	638	603	507	490	510	545	444	314	229	158	119	7,513
	F	274	1,232	1,546	1,426	1,336	1,386	1,513	1,419	1,310	1,184	1,188	1,242	1,208	1,031	735	509	701	19,240
	M	322	1,287	1,556	1,452	1,413	1,406	1,485	1,342	1,225	1,226	1,223	1,305	1,289	1,154	807	583	591	19,666

Northern Island Lake Zone

Island Lake																			
	F	106	463	573	531	425	345	341	304	242	201	203	155	142	109	71	45	53	4,309
	M	105	488	630	556	450	387	321	326	272	232	206	197	137	116	81	51	32	4,587
	F	106	463	573	531	425	345	341	304	242	201	203	155	142	109	71	45	53	4,309
	M	105	488	630	556	450	387	321	326	272	232	206	197	137	116	81	51	32	4,587

Manitoba Health, Healthy Living and Seniors Population Report - June 1, 2018

Northern Health Region

District	Gender	Under 1	1 - 4	5 - 9	10 - 14	15 - 19	20 - 24	25 - 29	30 - 34	35 - 39	40 - 44	45 - 49	50 - 54	55 - 59	60 - 64	65 - 69	70 - 74	75 +	Total
Northern Non-Direct Service Zone																			
Bunibonbee/Oxford House/Manto Sipi/God's River/God's Lake																			
	F	60	200	251	209	168	175	210	126	121	106	85	91	76	54	32	31	50	2,045
	M	62	247	288	222	172	200	165	161	108	130	109	98	88	61	30	27	41	2,209
Cross Lake/Pimickamak CN																			
	F	65	257	315	294	222	219	230	176	124	138	137	134	110	71	54	21	41	2,608
	M	76	304	318	285	232	240	228	181	123	141	124	122	115	84	55	25	37	2,690
GR/Misipawistik CN/ML/Mosakahiken CN/Eas/Chemawawin FN																			
	F	51	228	250	199	208	176	154	106	102	97	125	101	79	66	44	30	28	2,044
	M	63	214	252	241	187	208	151	126	98	94	121	115	88	66	41	35	31	2,131
Nelson House/Nisichawayasihk Cree Nation																			
	F	35	134	132	127	113	125	127	65	53	68	85	61	42	32	23	20	21	1,263
	M	45	135	155	141	129	147	118	80	57	71	68	56	57	42	21	19	19	1,360
Norway House/Norway House CN																			
	F	70	276	315	273	229	215	246	216	150	159	165	142	135	102	58	43	44	2,838
	M	85	276	327	292	242	200	262	193	156	180	159	180	136	84	62	37	37	2,908
Pukatawagan/Mathias Colomb CN																			
	F	25	101	126	98	92	77	87	62	43	43	44	42	28	23	11	7	15	924
	M	32	119	135	109	110	80	85	50	43	41	53	38	36	25	10	9	8	983
Sayisi Dene/Tadoule/Barren Lands/Brochet/Northlands/Lac Br																			
	F	15	73	92	67	64	71	69	61	37	48	39	45	22	28	18	14	15	778
	M	19	85	67	71	64	77	72	52	55	52	60	38	40	27	12	14	19	824
Shamattawa FN/York Factory FN/Tataskweyak CN/Split Lake																			
	F	49	171	212	197	155	142	137	93	77	99	105	72	62	52	27	22	22	1,694
	M	51	172	202	194	157	148	129	99	95	105	105	98	70	44	38	16	23	1,746
	F	370	1,440	1,693	1,464	1,251	1,200	1,260	905	707	758	785	688	554	428	267	188	236	14,194
	M	433	1,552	1,744	1,555	1,293	1,300	1,210	942	735	814	799	745	630	433	269	182	215	14,851
RHA Sub-Total (Sex)																			
	F	750	3,135	3,812	3,421	3,012	2,931	3,114	2,628	2,259	2,143	2,176	2,085	1,904	1,568	1,073	742	990	37,743
	M	860	3,327	3,930	3,563	3,156	3,093	3,016	2,610	2,232	2,272	2,228	2,247	2,056	1,703	1,157	816	838	39,104
RHA Total																			
		1,610	6,462	7,742	6,984	6,168	6,024	6,130	5,238	4,491	4,415	4,404	4,332	3,960	3,271	2,230	1,558	1,828	76,847

Northern Health Region

District	2014	2015	2016	2017	2018
Northern Direct Service Zone					
Bay Line	1,303	1,263	1,240	1,201	1,222
Flin Flon/Snow Lake/Cranberry/Sherridon	7,695	7,775	7,762	7,749	7,706
Gillam/Fox Lake CN	1,648	1,582	1,532	1,489	1,433
Lynn/MC FN/Leaf/O-P FN (SIL)/PN FN (Granville)	2,411	2,442	2,417	2,400	2,449
The Pas/OCN/Kelsey	11,310	11,290	11,292	11,266	11,161
Thompson/Mystery Lake	14,463	14,670	14,873	15,016	14,935
Northern Island Lake Zone					
Island Lake	8,630	8,762	8,820	8,943	8,896
Northern Non-Direct Service Zone					
Bunibonibee/Oxford House/Manto Sipi/God's River/God's Lake	4,167	4,198	4,238	4,220	4,254
Cross Lake/Pimicikamak CN	4,771	4,901	5,080	5,174	5,298
GR/Misipawistik CN/ML/Mosakahiken CN/Eas/Chemawawin FN	4,031	4,060	4,100	4,153	4,175
Nelson House/Nisichawayasihk Cree Nation	2,655	2,649	2,686	2,665	2,623
Norway House/Norway House CN	5,455	5,549	5,566	5,652	5,746
Pukatawagan/Mathias Colomb CN	1,832	1,838	1,842	1,873	1,907
Sayisi Dene/Tadoules/Barren Lands/Brochet/Northlands/Lac Br	1,591	1,569	1,571	1,591	1,602
Shamattawa FN/York Factory FN/Tataskweyak CN/Split Lake	3,387	3,399	3,405	3,453	3,440
R.H.A. Total	75,349	75,947	76,424	76,845	76,847

Note: Manitoba Health Districts are defined by the RHAs, and are subject to change over time. For comparability, all populations have been tabulated using current district definitions, even if different definitions were in use during that population's year.

Northern Health Region	Age Group 65+				
	District	2014	2015	2016	2017
Northern Direct Service Zone					
Bay Line	110	108	115	117	132
Flin Flon/Snow Lake/Cranberry/Sherridon	1,159	1,198	1,237	1,286	1,325
Gillam/Fox Lake CN	57	61	61	65	63
Lynn/MC FN/Leaf/O-P FN (SIL)/PN FN (Granville)	152	160	152	161	159
The Pas/OCN/Kelsey	1,100	1,143	1,190	1,240	1,261
Thompson/Mystery Lake	821	866	906	948	986
Northern Island Lake Zone					
Island Lake	280	298	306	313	333
Northern Non-Direct Service Zone					
Bunibonibee/Oxford House/Manto Sipi/God's River/God's Lake	215	213	213	216	211
Cross Lake/Pimicikamak CN	196	205	225	229	233
GR/Misipawistik CN/ML/Mosakahiken CN/Eas/Chemawawin FN	191	189	197	199	209
Nelson House/Nisichawayasihk Cree Nation	111	107	115	118	123
Norway House/Norway House CN	245	245	255	266	281
Pukatawagan/Mathias Colomb CN	56	50	53	54	60
Sayisi Dene/Tadoules/Barren Lands/Brochet/Northlands/Lac Br	92	98	96	93	92
Shamattawa FN/York Factory FN/Tataskweyak CN/Split Lake	141	148	152	151	148
R.H.A. Total	4,926	5,089	5,273	5,456	5,616

Note: Manitoba Health Districts are defined by the RHAs, and are subject to change over time. For comparability, all populations have been tabulated using current district definitions, even if different definitions were in use during that population's year.

Manitoba Health, Healthy Living and Seniors Population Report - June 1, 2018

Northern Health Region

Municipality	Gender	Under 1	1 - 4	5 - 9	10 - 14	15 - 19	20 - 24	25 - 29	30 - 34	35 - 39	40 - 44	45 - 49	50 - 54	55 - 59	60 - 64	65 - 69	70 - 74	75 +	Total
FLIN FLON CITY																			
	F	22	119	176	153	155	196	196	193	167	176	161	199	258	252	180	110	233	2,946
	M	20	137	160	164	167	165	189	173	181	171	166	182	289	295	202	133	154	2,948
GILLAM TOWN																			
	F	13	35	71	59	39	46	41	58	51	45	31	36	23	11	5	8	3	575
	M	12	41	50	48	43	49	50	50	56	48	36	41	23	27	8	3	5	590
GRAND RAPIDS TOWN																			
	F	10	43	35	34	32	34	25	18	23	17	20	21	19	22	14	14	11	392
	M	12	40	44	24	25	37	23	24	14	12	27	23	23	14	12	11	9	374
KELSEY RM																			
	F	10	60	93	76	72	81	74	54	51	55	73	75	92	101	77	49	55	1,148
	M	23	63	91	77	84	89	95	68	65	66	67	86	88	99	82	63	63	1,269
LEAF RAPIDS TOWN																			
	F	4	27	36	35	23	26	27	22	12	15	16	17	15	10	16	7	2	310
	M	10	36	33	36	23	28	20	24	14	13	14	15	10	16	9	8	8	317
LYNN LAKE TOWN																			
	F	3	25	25	20	13	23	21	23	12	8	16	11	22	8	5	10	12	257
	M	6	19	26	19	12	22	17	21	20	14	13	26	26	16	13	4	14	288
MYSTERY LAKE LGD																			
	F	0	0	0	0	0	0	0	0	0	0	1	0	0	0	0	0	0	1
	M	0	0	0	0	0	0	0	0	0	1	0	0	0	0	0	0	0	1
SNOW LAKE TOWN																			
	F	7	27	28	16	25	27	35	34	27	22	18	46	48	29	33	23	31	476
	M	7	36	28	15	23	29	39	37	20	34	28	36	45	51	26	34	29	517
THE PAS CITY																			
	F	42	227	280	247	255	251	283	274	256	226	248	224	252	219	161	99	170	3,714
	M	69	200	271	270	284	281	241	234	217	244	234	236	257	225	161	128	151	3,703
THOMPSON CITY																			
	F	122	524	614	580	525	536	659	614	598	496	493	499	380	301	184	152	144	7,421
	M	126	512	658	574	534	552	638	603	507	489	510	545	444	314	229	158	119	7,512
UNORG. TERRITORIES - BURNTWOOD																			
	F	100	340	478	398	339	320	316	253	203	196	178	170	138	119	65	43	55	3,711
	M	107	389	464	376	310	343	282	223	219	239	218	216	141	120	85	49	42	3,823

Manitoba Health, Healthy Living and Seniors Population Report - June 1, 2018

Northern Health Region

Municipality	Gender	Under 1	1 - 4	5 - 9	10 - 14	15 - 19	20 - 24	25 - 29	30 - 34	35 - 39	40 - 44	45 - 49	50 - 54	55 - 59	60 - 64	65 - 69	70 - 74	75 +	Total
UNORG. TERRITORIES - NORMAN																			
	F	33	118	114	98	126	116	84	75	60	73	62	58	51	39	30	18	15	1,170
	M	44	123	132	156	141	121	112	75	89	77	89	65	61	48	26	30	25	1,414
Non-FN Sub-Total(Sex)	F	366	1,545	1,950	1,716	1,604	1,656	1,761	1,618	1,460	1,329	1,317	1,356	1,298	1,111	770	533	731	22,121
	M	436	1,596	1,957	1,759	1,646	1,716	1,706	1,532	1,402	1,408	1,402	1,471	1,407	1,225	853	621	619	22,756

BARREN LANDS FN

	F	4	11	18	12	13	19	14	10	6	14	8	6	3	3	1	5	2	149
	M	3	21	15	17	19	14	9	11	5	8	11	10	4	6	3	0	7	163

CHEMAWAWIN FN

	F	14	46	63	45	43	30	39	18	17	13	33	19	10	7	5	4	2	408
	M	11	41	50	44	47	45	31	17	14	14	22	26	13	6	5	3	6	395

CHURCHILL FN

	F	1	10	7	8	7	6	8	9	6	6	6	8	7	9	6	2	3	109
	M	2	11	9	13	7	10	18	6	13	6	11	4	8	9	2	5	3	137

CROSS LAKE FN

	F	50	197	237	220	162	160	177	131	84	103	110	101	82	56	42	16	32	1,960
	M	55	227	248	225	175	180	174	143	88	95	91	89	88	66	42	18	30	2,034

FOX LAKE FN

	F	2	5	5	6	8	8	7	8	3	6	7	5	5	11	6	2	7	101
	M	1	5	9	11	7	8	5	7	10	5	6	8	8	5	3	4	5	107

GARDEN HILL FN

	F	28	137	163	135	128	114	91	84	69	48	57	47	44	38	29	12	18	1,242
	M	34	148	178	147	151	126	112	100	67	69	62	67	61	34	28	14	16	1,414

GODS LAKE NARROWS FN

	F	10	45	63	35	29	40	56	30	28	25	14	28	16	17	4	11	9	460
	M	18	51	75	55	30	51	46	42	24	24	17	30	27	20	6	8	13	537

GODS RIVER FN

	F	13	34	39	41	17	15	39	21	16	8	15	10	7	5	3	2	4	289
	M	9	34	43	35	12	17	24	17	12	19	14	6	12	4	3	1	1	263

MARCEL COLOMB FN

	F	5	20	17	18	15	15	13	8	5	5	6	7	8	2	1	0	2	147
	M	3	24	21	16	13	8	13	7	3	3	5	7	3	3	2	3	0	134

Manitoba Health, Healthy Living and Seniors Population Report - June 1, 2018

Northern Health Region

Municipality	Gender	Under 1	1 - 4	5 - 9	10 - 14	15 - 19	20 - 24	25 - 29	30 - 34	35 - 39	40 - 44	45 - 49	50 - 54	55 - 59	60 - 64	65 - 69	70 - 74	75 +	Total
MATHIAS COLOMB FN																			
	F	20	83	107	83	72	57	67	47	35	28	37	33	22	21	8	3	15	738
	M	25	97	112	91	78	62	58	42	24	25	34	32	30	24	9	7	5	755
MISIPAWISTIK CREE NATION																			
	F	6	24	36	20	23	16	18	13	13	13	14	13	14	8	3	3	3	240
	M	2	20	40	35	16	29	21	13	8	6	16	14	12	12	4	0	1	249
MOOSE LAKE FN																			
	F	2	29	37	31	27	24	22	13	7	12	15	15	7	6	4	3	2	256
	M	6	30	33	31	27	23	14	16	14	18	5	9	7	4	5	4	3	249
NELSON HOUSE FN																			
	F	24	106	96	99	91	94	93	42	45	53	70	45	33	19	20	17	14	961
	M	36	91	121	113	105	102	86	46	44	46	55	41	46	32	14	15	10	1,003
NORTHLANDS FN																			
	F	6	33	30	32	26	31	30	24	14	15	16	24	8	8	4	7	7	315
	M	8	35	26	24	22	22	25	27	26	21	19	15	12	4	4	3	7	300
NORWAY HOUSE FN																			
	F	59	241	258	241	188	186	209	179	122	129	137	121	117	78	53	36	34	2,388
	M	69	238	283	237	204	168	222	169	116	142	124	141	108	65	53	29	35	2,403
OPASKWAYAK CREE NATION																			
	F	13	78	102	104	97	77	83	69	61	62	65	58	44	34	29	19	20	1,015
	M	22	103	91	99	98	68	81	58	51	58	67	46	38	40	27	19	13	979
O-PIPON-NA-PIWIN CREE NATION																			
	F	11	27	31	42	37	27	20	20	21	20	17	14	6	10	9	4	4	320
	M	2	45	35	42	39	24	27	19	19	27	23	17	12	9	5	4	2	351
OXFORD HOUSE FN																			
	F	24	77	105	103	87	74	79	55	63	46	36	38	39	21	20	16	30	913
	M	25	118	115	97	93	91	65	73	58	65	58	37	39	30	17	14	24	1,019
RED SUCKER LAKE FN																			
	F	6	36	34	49	36	28	21	18	16	26	27	14	7	10	2	8	6	344
	M	6	36	32	40	31	41	17	12	25	29	22	15	7	9	6	7	1	336
SHAMATTAWA FN																			
	F	13	59	66	43	42	42	44	21	15	32	25	11	15	14	6	4	5	457
	M	19	52	59	50	42	39	31	30	22	24	28	20	15	8	6	3	3	451

Manitoba Health, Healthy Living and Seniors Population Report - June 1, 2018

Northern Health Region

Municipality	Gender	Under 1	1 - 4	5 - 9	10 - 14	15 - 19	20 - 24	25 - 29	30 - 34	35 - 39	40 - 44	45 - 49	50 - 54	55 - 59	60 - 64	65 - 69	70 - 74	75 +	Total
SPLIT LAKE FN																			
	F	16	72	94	102	74	54	53	38	44	46	49	34	28	22	11	7	10	754
	M	21	75	95	103	74	66	57	42	37	48	38	46	33	16	18	10	15	794
ST THERESA POINT FN																			
	F	34	128	159	157	119	101	113	105	69	67	62	51	54	38	22	18	15	1,312
	M	21	157	200	187	150	112	108	113	100	67	55	65	39	48	31	16	12	1,481
WAR LAKE FN																			
	F	0	5	1	1	0	0	3	4	2	1	1	1	2	4	1	0	1	27
	M	1	3	4	2	2	6	6	1	2	0	0	0	2	2	1	0	1	33
WASAGAMACK FN																			
	F	19	76	84	68	59	45	45	38	34	28	23	20	22	12	8	5	11	597
	M	22	59	73	75	51	58	55	62	41	32	30	28	17	15	6	7	3	634
YORK FACTORY FN																			
	F	4	11	10	10	8	12	9	5	4	8	9	6	6	4	6	5	3	120
	M	3	10	6	15	17	7	5	5	7	13	13	3	8	7	4	1	3	127
FN Sub-Total(Sex)																			
	F	384	1,590	1,862	1,705	1,408	1,275	1,353	1,010	799	814	859	729	606	457	303	209	259	15,622
	M	424	1,731	1,973	1,804	1,510	1,377	1,310	1,078	830	864	826	776	649	478	304	195	219	16,348
RHA Sub-Total (Sex)																			
	F	750	3,135	3,812	3,421	3,012	2,931	3,114	2,628	2,259	2,143	2,176	2,085	1,904	1,568	1,073	742	990	37,743
	M	860	3,327	3,930	3,563	3,156	3,093	3,016	2,610	2,232	2,272	2,228	2,247	2,056	1,703	1,157	816	838	39,104
RHA Total																			
		1,610	6,462	7,742	6,984	6,168	6,024	6,130	5,238	4,491	4,415	4,404	4,332	3,960	3,271	2,230	1,558	1,828	76,847

Northern Health Region

Municipality	2014	2015	2016	2017	2018
FLIN FLON CITY	5,840	5,885	5,865	5,889	5,894
GILLAM TOWN	1,339	1,305	1,247	1,213	1,165
GRAND RAPIDS TOWN	732	728	737	755	766
KELSEY RM	2,520	2,530	2,506	2,461	2,417
LEAF RAPIDS TOWN	629	624	589	607	627
LYNN LAKE TOWN	789	822	829	806	545
MYSTERY LAKE LGD	2	2	2	2	2
SNOW LAKE TOWN	925	963	974	1,018	993
THE PAS CITY	7,598	7,507	7,530	7,489	7,417
THOMPSON CITY	14,459	14,668	14,870	15,013	14,933
UNORG. TERRITORIES - BURNTWOOD	7,203	7,263	7,316	7,469	7,534
UNORG. TERRITORIES - NORMAN	2,549	2,560	2,600	2,575	2,584
Non-FN Sub-Total	44,585	44,857	45,065	45,297	44,877
BARREN LANDS FN	303	293	299	312	312
CHEMAWAWIN FN	761	773	788	796	803
CHURCHILL FN	267	269	264	249	246
CROSS LAKE FN	3,614	3,717	3,836	3,900	3,994
FOX LAKE FN	235	213	219	208	208
GARDEN HILL FN	2,651	2,660	2,645	2,656	2,656
GODS LAKE NARROWS FN	982	986	1,014	979	997
GODS RIVER FN	532	553	558	554	552
INUIT & OOP FN	2	-	1	1	-
MARCEL COLOMB FN	1	1	1	1	281
MATHIAS COLOMB FN	1,456	1,454	1,435	1,464	1,493
MISIPAWISTIK CREE NATION	498	489	490	493	489
MOOSE LAKE FN	499	536	519	523	505
NELSON HOUSE FN	2,010	1,997	2,017	2,006	1,964
NORTHLANDS FN	579	579	588	610	615
NORWAY HOUSE FN	4,532	4,603	4,631	4,695	4,791

Northern Health Region

Municipality	2014	2015	2016	2017	2018
OPASKWAYAK CREE NATION	1,894	1,938	1,958	1,984	1,994
O-PIPON-NA-PIWIN CREE NATION	672	684	687	664	671
OXFORD HOUSE FN	1,918	1,917	1,938	1,938	1,932
RED SUCKER LAKE FN	667	663	684	686	680
SHAMATTAWA FN	869	896	883	891	908
SPLIT LAKE FN	1,574	1,550	1,565	1,560	1,548
ST THERESA POINT FN	2,730	2,781	2,845	2,838	2,793
WAR LAKE FN	68	64	65	67	60
WASAGAMACK FN	1,210	1,227	1,181	1,223	1,231
YORK FACTORY FN	240	247	248	250	247
FN Sub-Total	30,764	31,090	31,359	31,548	31,970
R.H.A. Total	75,349	75,947	76,424	76,845	76,847

Northern Health Region

Age Group 65+

Municipality	2014	2015	2016	2017	2018
FLIN FLON CITY	855	881	914	970	1,012
GILLAM TOWN	29	35	35	36	32
GRAND RAPIDS TOWN	57	59	63	65	71
KELSEY RM	352	357	375	380	389
LEAF RAPIDS TOWN	39	45	43	51	50
LYNN LAKE TOWN	73	72	65	63	58
SNOW LAKE TOWN	172	178	177	175	176
THE PAS CITY	762	802	835	872	870
THOMPSON CITY	821	866	906	948	986
UNORG. TERRITORIES - BURNTWOOD	283	289	301	303	339
UNORG. TERRITORIES - NORMAN	139	141	142	140	144
Non-FN Sub-Total	3,582	3,725	3,856	4,003	4,127
BARREN LANDS FN	18	19	20	19	18
CHEMAWAWIN FN	24	23	24	24	25
CHURCHILL FN	23	25	21	22	21
CROSS LAKE FN	150	159	172	178	180
FOX LAKE FN	22	23	23	25	27
GARDEN HILL FN	96	107	109	113	117
GODS LAKE NARROWS FN	57	53	52	53	51
GODS RIVER FN	15	13	13	15	14
MARCEL COLOMB FN	-	-	1	1	8
MATHIAS COLOMB FN	45	39	39	42	47
MISIPAWISTIK CREE NATION	17	16	16	13	14
MOOSE LAKE FN	17	16	17	20	21
NELSON HOUSE FN	85	84	89	91	90
NORTHLANDS FN	30	30	31	32	32
NORWAY HOUSE FN	207	204	218	228	240
OPASKWAYAK CREE NATION	100	101	109	114	127
O-PIPON-NA-PIWIN CREE NATION	29	31	28	31	28

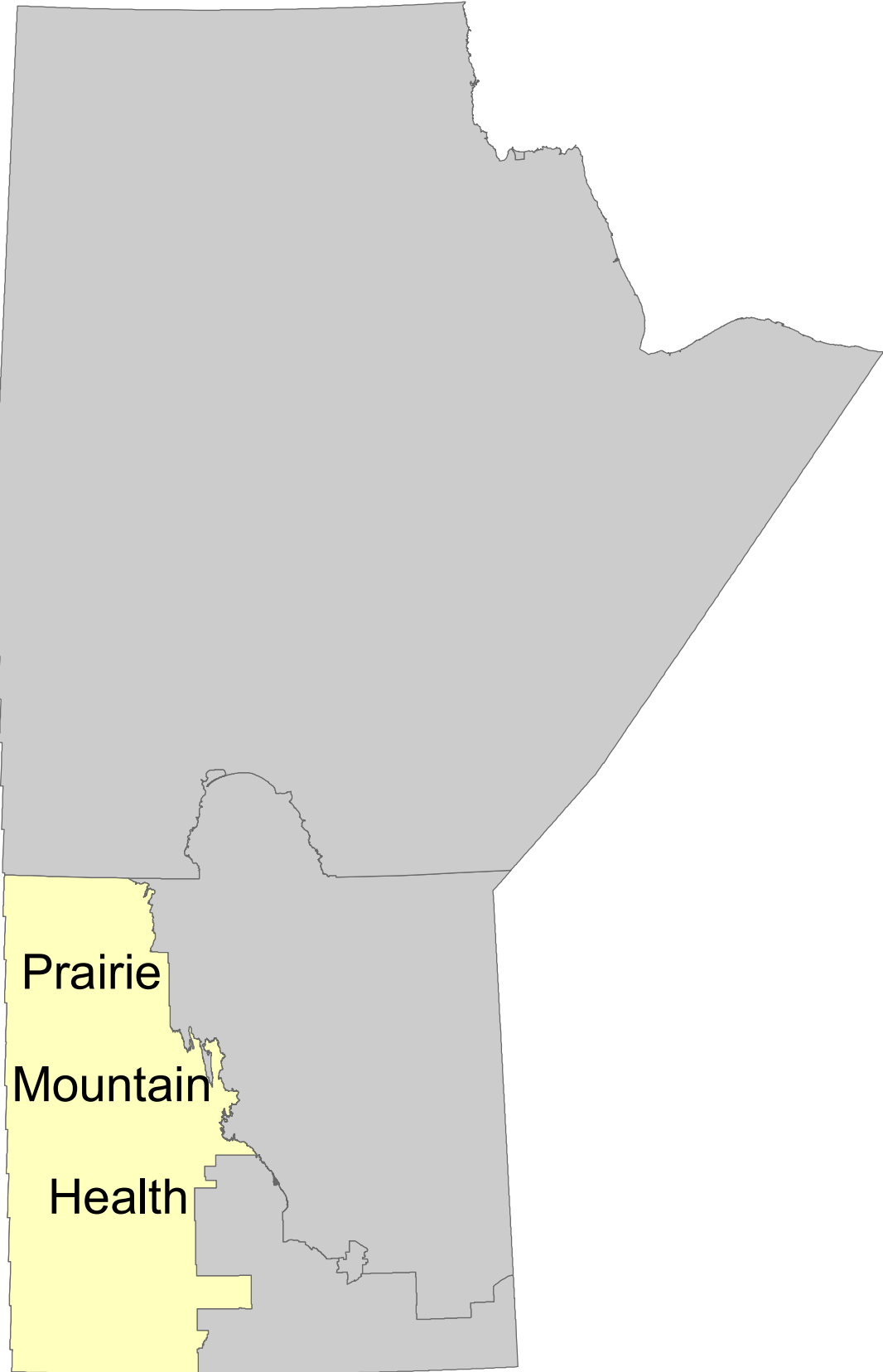
Northern Health Region**Age Group 65+**

Municipality	2014	2015	2016	2017	2018
OXFORD HOUSE FN	122	123	123	124	121
RED SUCKER LAKE FN	33	33	33	31	30
SHAMATTAWA FN	28	27	31	27	27
SPLIT LAKE FN	75	78	77	78	71
ST THERESA POINT FN	90	95	106	108	114
WAR LAKE FN	6	3	3	4	4
WASAGAMACK FN	40	44	41	38	40
YORK FACTORY FN	15	18	21	22	22
FN Sub-Total	1,344	1,364	1,417	1,453	1,489
R.H.A. Total	4,926	5,089	5,273	5,456	5,616

Population of Prairie Mountain Health

June 1, 2018

Manitoba RHAs -- Prairie Mountain Health



Manitoba Health, Healthy Living and Seniors Population Report - June 1, 2018

Prairie Mountain Health Region

District	Gender	Under 1	1 - 4	5 - 9	10 - 14	15 - 19	20 - 24	25 - 29	30 - 34	35 - 39	40 - 44	45 - 49	50 - 54	55 - 59	60 - 64	65 - 69	70 - 74	75 +	Total
PMH Brandon Zone																			
Brandon Downtown																			
	F	90	352	356	315	384	511	529	485	447	407	379	318	321	272	204	204	579	6,153
	M	91	305	385	347	327	488	534	508	521	432	396	340	353	237	195	134	281	5,874
Brandon East End																			
	F	41	211	254	243	188	245	303	311	267	212	190	209	192	149	127	114	422	3,678
	M	58	209	263	224	222	247	264	332	288	232	198	187	206	138	116	78	223	3,485
Brandon North Hill																			
	F	36	159	206	225	194	255	280	262	271	213	248	214	296	280	247	210	282	3,878
	M	43	191	236	222	201	237	250	248	235	216	225	231	244	236	200	175	261	3,651
Brandon South End																			
	F	59	288	336	321	308	326	392	443	430	365	343	307	367	313	263	194	351	5,406
	M	78	326	386	352	328	362	373	403	403	364	361	303	318	281	229	192	256	5,315
Brandon West End																			
	F	89	409	564	540	500	561	656	619	653	599	512	479	560	471	465	326	698	8,701
	M	91	430	568	520	516	486	600	582	632	556	512	471	470	443	388	304	486	8,055
	F	315	1,419	1,716	1,644	1,574	1,898	2,160	2,120	2,068	1,796	1,672	1,527	1,736	1,485	1,306	1,048	2,332	27,816
	M	361	1,461	1,838	1,665	1,594	1,820	2,021	2,073	2,079	1,800	1,692	1,532	1,591	1,335	1,128	883	1,507	26,380

Manitoba Health, Healthy Living and Seniors Population Report - June 1, 2018

Prairie Mountain Health Region

District	Gender	Under 1	1 - 4	5 - 9	10 - 14	15 - 19	20 - 24	25 - 29	30 - 34	35 - 39	40 - 44	45 - 49	50 - 54	55 - 59	60 - 64	65 - 69	70 - 74	75 +	Total
PMH North Zone																			
Agassiz Mountain																			
	F	41	212	236	250	249	213	192	174	156	200	196	221	274	244	202	183	307	3,550
	M	47	184	275	252	226	227	197	166	170	178	209	225	257	227	227	197	288	3,552
Dauphin																			
	F	54	206	256	290	248	274	265	303	289	266	244	275	289	309	305	250	693	4,816
	M	61	233	273	269	255	278	253	294	246	286	223	265	259	275	247	209	419	4,345
Duck Mountain																			
	F	19	130	172	162	129	147	145	157	139	123	137	162	181	226	195	161	386	2,771
	M	28	124	199	134	155	162	136	164	135	141	134	137	208	207	210	177	279	2,730
Porcupine Mountain																			
	F	59	248	300	297	264	270	250	228	202	228	237	262	260	286	229	160	261	4,041
	M	77	231	316	331	340	292	289	229	220	239	263	255	312	305	241	205	278	4,423
Riding Mountain																			
	F	21	97	133	124	148	141	113	126	118	142	137	174	192	224	176	140	246	2,452
	M	24	104	123	135	134	170	149	137	136	135	151	174	218	238	208	172	239	2,647
Swan River																			
	F	39	126	161	150	131	170	193	151	143	149	156	183	192	146	161	164	343	2,758
	M	46	130	166	162	152	171	179	149	142	135	137	157	189	155	126	121	249	2,566
	F	233	1,019	1,258	1,273	1,169	1,215	1,158	1,139	1,047	1,108	1,107	1,277	1,388	1,435	1,268	1,058	2,236	20,388
	M	283	1,006	1,352	1,283	1,262	1,300	1,203	1,139	1,049	1,114	1,117	1,213	1,443	1,407	1,259	1,081	1,752	20,263

Manitoba Health, Healthy Living and Seniors Population Report - June 1, 2018

Prairie Mountain Health Region

District	Gender	Under 1	1 - 4	5 - 9	10 - 14	15 - 19	20 - 24	25 - 29	30 - 34	35 - 39	40 - 44	45 - 49	50 - 54	55 - 59	60 - 64	65 - 69	70 - 74	75 +	Total
PMH South Zone																			
Assessippi	F	56	313	386	364	326	357	316	324	298	293	308	352	394	398	307	251	553	5,596
	M	78	285	372	356	350	365	373	344	331	295	289	351	443	433	329	261	406	5,661
Little Saskatchewan	F	68	292	351	329	336	337	368	358	366	361	343	399	559	532	447	340	608	6,394
	M	65	309	401	366	365	345	375	346	336	362	368	415	536	572	458	376	498	6,493
Souris River	F	87	346	463	410	388	400	460	458	411	389	392	447	470	491	393	357	720	7,082
	M	94	372	502	440	395	450	438	466	394	400	378	412	514	493	377	323	534	6,982
Spruce Woods	F	115	417	514	465	405	468	503	516	441	413	427	462	529	557	481	375	761	7,849
	M	110	479	572	536	466	449	455	400	366	377	395	451	527	561	508	387	570	7,609
Turtle Mountain	F	61	232	311	280	279	273	305	289	291	268	274	281	395	378	303	263	549	5,032
	M	63	278	332	312	318	312	304	290	301	282	251	256	368	384	316	275	433	5,075
Whitemud	F	75	296	401	418	350	286	299	395	438	394	338	323	363	394	350	223	615	5,958
	M	84	325	460	430	400	362	366	445	512	447	383	336	373	360	331	271	436	6,321
F		462	1,896	2,426	2,266	2,084	2,121	2,251	2,340	2,245	2,118	2,082	2,264	2,710	2,750	2,281	1,809	3,806	37,911
M		494	2,048	2,639	2,440	2,294	2,283	2,311	2,291	2,240	2,163	2,064	2,221	2,761	2,803	2,319	1,893	2,877	38,141

RHA Sub-Total (Sex)	F	1,010	4,334	5,400	5,183	4,827	5,234	5,569	5,599	5,360	5,022	4,861	5,068	5,834	5,670	4,855	3,915	8,374	86,115
	M	1,138	4,515	5,829	5,388	5,150	5,403	5,535	5,503	5,368	5,077	4,873	4,966	5,795	5,545	4,706	3,857	6,136	84,784
RHA Total		2,148	8,849	11,229	10,571	9,977	10,637	11,104	11,102	10,728	10,099	9,734	10,034	11,629	11,215	9,561	7,772	14,510	170,899

Prairie Mountain Health Region

District	2014	2015	2016	2017	2018
PMH Brandon Zone					
Brandon Downtown	11,710	12,014	12,082	12,172	12,027
Brandon East End	6,753	6,892	7,056	7,108	7,163
Brandon North Hill	7,420	7,564	7,545	7,524	7,529
Brandon South End	10,037	10,282	10,435	10,651	10,721
Brandon West End	15,362	15,484	15,984	16,543	16,756
PMH North Zone					
Agassiz Mountain	7,153	7,109	7,118	7,116	7,102
Dauphin	8,868	8,883	8,979	9,022	9,161
Duck Mountain	5,560	5,444	5,471	5,516	5,501
Porcupine Mountain	8,898	8,764	8,655	8,529	8,464
Riding Mountain	5,163	5,172	5,150	5,140	5,099
Swan River	5,345	5,310	5,390	5,427	5,324
PMH South Zone					
Asessippi	11,339	11,353	11,307	11,305	11,257
Little Saskatchewan	12,770	12,810	12,781	12,806	12,887
Souris River	14,228	14,123	14,211	14,101	14,064
Spruce Woods	15,429	15,307	15,364	15,376	15,458
Turtle Mountain	10,155	10,121	10,066	10,131	10,107
Whitemud	11,652	11,845	12,166	12,221	12,279
R.H.A. Total	167,842	168,477	169,760	170,688	170,899

Note: Manitoba Health Districts are defined by the RHAs, and are subject to change over time. For comparability, all populations have been tabulated using current district definitions, even if different definitions were in use during that population's year.

Prairie Mountain Health Region	Age Group 65+				
	District	2014	2015	2016	2017
PMH Brandon Zone					
Brandon Downtown	1,425	1,506	1,576	1,597	1,597
Brandon East End	1,092	1,104	1,101	1,068	1,080
Brandon North Hill	1,215	1,218	1,279	1,318	1,375
Brandon South End	1,361	1,378	1,415	1,438	1,485
Brandon West End	2,323	2,397	2,448	2,544	2,667
PMH North Zone					
Agassiz Mountain	1,330	1,345	1,371	1,377	1,404
Dauphin	2,006	2,033	2,087	2,093	2,123
Duck Mountain	1,370	1,366	1,401	1,409	1,408
Porcupine Mountain	1,307	1,321	1,323	1,331	1,374
Riding Mountain	1,098	1,111	1,142	1,147	1,181
Swan River	1,160	1,167	1,178	1,172	1,164
PMH South Zone					
Asessippi	2,093	2,065	2,091	2,074	2,107
Little Saskatchewan	2,562	2,614	2,659	2,674	2,727
Souris River	2,648	2,651	2,677	2,703	2,704
Spruce Woods	2,894	2,887	2,962	3,006	3,082
Turtle Mountain	2,059	2,045	2,056	2,097	2,139
Whitemud	2,090	2,138	2,178	2,192	2,226
R.H.A. Total	30,033	30,346	30,944	31,240	31,843

Note: Manitoba Health Districts are defined by the RHAs, and are subject to change over time. For comparability, all populations have been tabulated using current district definitions, even if different definitions were in use during that population's year.

Manitoba Health, Healthy Living and Seniors Population Report - June 1, 2018

Prairie Mountain Health Region

Municipality	Gender	Under 1	1 - 4	5 - 9	10 - 14	15 - 19	20 - 24	25 - 29	30 - 34	35 - 39	40 - 44	45 - 49	50 - 54	55 - 59	60 - 64	65 - 69	70 - 74	75 +	Total
ALONSA RM - PARKLAND																			
	F	9	51	63	61	65	52	40	45	32	38	42	48	42	44	33	31	46	742
	M	11	47	69	76	58	60	47	35	32	28	53	45	61	38	30	27	46	763
ARGYLE RM																			
	F	3	17	15	24	24	32	20	16	15	22	31	30	36	32	31	31	58	437
	M	5	14	19	24	37	37	25	19	16	17	34	35	27	41	40	30	31	451
BOISSEVAIN-MORTON MUN																			
	F	17	59	76	64	55	62	73	71	69	54	70	68	95	103	67	67	151	1,221
	M	15	42	82	74	71	75	58	73	64	71	66	62	74	87	85	71	124	1,194
BRANDON CITY																			
	F	315	1,419	1,716	1,644	1,574	1,898	2,160	2,120	2,068	1,796	1,672	1,527	1,736	1,485	1,306	1,048	2,332	27,816
	M	361	1,461	1,838	1,665	1,594	1,820	2,021	2,073	2,079	1,800	1,692	1,532	1,591	1,335	1,128	883	1,507	26,380
BRENDA-WASKADA MUN																			
	F	2	15	14	19	15	25	13	16	14	16	18	22	28	35	29	21	20	322
	M	4	15	22	24	20	20	13	14	13	27	19	22	31	31	26	30	22	353
CARBERRY TOWN																			
	F	13	81	77	91	76	56	65	92	77	95	80	76	72	71	74	41	132	1,269
	M	21	87	106	89	104	80	72	61	79	84	81	68	87	65	61	40	84	1,269
CARTWRIGHT-ROBLIN MUNICIPALITY																			
	F	12	38	46	51	47	48	43	34	35	37	25	29	41	43	35	30	49	643
	M	9	44	40	42	34	46	47	36	30	31	33	35	38	44	27	37	42	615
CLANWILLIAN-ERICKSON MUN																			
	F	5	31	23	32	43	20	25	24	37	19	29	28	43	44	47	39	54	543
	M	5	22	38	20	22	20	33	27	29	31	28	34	32	48	36	43	52	520
CORNWALLIS RM																			
	F	30	124	145	102	74	118	145	149	121	82	68	72	80	76	52	39	39	1,516
	M	33	128	147	100	82	62	53	53	53	61	65	66	80	57	59	47	49	1,195
DAUPHIN CITY																			
	F	54	206	256	290	248	274	265	303	289	266	244	275	289	309	305	250	693	4,816
	M	61	233	273	269	255	278	253	294	246	286	223	265	259	275	247	209	419	4,345
DAUPHIN RM																			
	F	7	35	38	33	47	44	41	38	39	51	45	57	59	85	57	51	39	766
	M	9	35	42	44	40	57	51	43	44	49	44	60	71	80	91	57	66	883

Manitoba Health, Healthy Living and Seniors Population Report - June 1, 2018

Prairie Mountain Health Region

Municipality	Gender	Under 1	1 - 4	5 - 9	10 - 14	15 - 19	20 - 24	25 - 29	30 - 34	35 - 39	40 - 44	45 - 49	50 - 54	55 - 59	60 - 64	65 - 69	70 - 74	75 +	Total
DELORAINE-WINCHESTER MUN																			
	F	9	25	45	43	36	39	34	32	37	35	34	47	59	57	51	41	115	739
	M	5	46	33	37	41	48	49	32	41	41	33	32	63	62	60	42	81	746
ELLICE-ARCHIE RM																			
	F	3	24	15	29	22	38	25	26	15	16	23	28	51	23	25	17	27	407
	M	8	12	30	30	23	36	32	26	19	17	24	34	46	46	30	18	31	462
ELTON RM																			
	F	8	60	67	61	47	49	55	66	72	71	61	57	81	74	46	24	31	930
	M	18	50	82	72	72	59	47	56	66	74	61	54	73	77	66	34	32	993
ETHELBERT MUN																			
	F	2	16	19	14	14	18	14	19	14	15	18	22	18	23	32	24	34	316
	M	4	18	20	21	19	14	21	22	17	15	20	27	28	32	26	29	34	367
GILBERT PLAINS MUN																			
	F	7	24	47	48	52	40	33	38	40	45	42	55	59	67	49	39	100	785
	M	6	23	33	41	42	67	42	47	49	45	55	49	57	66	52	47	82	803
GLENBORO-SOUTH CYPRESS MUN																			
	F	5	28	30	38	29	31	29	33	43	42	30	35	47	46	50	34	84	634
	M	9	46	51	42	41	37	37	29	37	41	25	35	58	39	50	35	57	669
GLENELLA-LANSDOWNE RM																			
	F	5	12	27	26	30	25	19	23	23	30	25	14	31	51	39	25	43	448
	M	5	20	30	39	45	24	15	21	24	21	38	30	25	43	49	36	45	510
GRANDVIEW MUNICIPALITY																			
	F	5	33	40	44	32	37	33	44	43	37	28	48	43	73	67	56	126	789
	M	7	33	52	36	41	26	33	46	39	41	30	33	60	51	79	57	106	770
GRASSLAND MUN																			
	F	7	51	43	30	49	35	49	49	47	35	38	32	59	55	46	34	64	723
	M	11	50	66	61	46	48	49	42	49	42	28	44	62	50	47	45	47	787
HAMIOTA MUN																			
	F	3	38	49	48	44	42	31	46	43	40	29	50	37	65	37	40	100	742
	M	5	22	40	43	36	31	35	32	50	33	38	37	52	57	48	36	71	666
HARRISON-PARK MUN																			
	F	3	28	39	25	24	42	51	38	28	44	34	61	99	99	95	70	93	873
	M	8	34	28	23	26	35	34	41	29	38	50	65	87	97	117	87	99	898

Manitoba Health, Healthy Living and Seniors Population Report - June 1, 2018

Prairie Mountain Health Region

Municipality	Gender	Under 1	1 - 4	5 - 9	10 - 14	15 - 19	20 - 24	25 - 29	30 - 34	35 - 39	40 - 44	45 - 49	50 - 54	55 - 59	60 - 64	65 - 69	70 - 74	75 +	Total
KILLARNEY-TURTLE MOUNTAIN RM																			
	F	30	83	116	100	90	95	92	96	101	80	115	120	116	151	119	104	236	1,844
	M	14	97	128	130	99	102	116	96	98	86	99	87	118	154	131	95	170	1,820
LAKESHORE RM																			
	F	7	25	28	31	34	32	27	26	24	31	43	53	73	49	52	50	48	633
	M	6	29	32	37	34	36	38	19	29	31	42	62	73	57	62	51	66	704
MCCREARY MUN																			
	F	3	17	31	24	32	21	14	22	28	34	21	20	34	45	32	31	65	474
	M	3	22	39	25	23	25	14	20	26	32	29	20	26	35	47	35	64	485
MELITA TOWN																			
	F	3	35	45	35	34	36	57	38	33	36	38	32	39	41	28	32	87	649
	M	11	34	37	36	36	35	37	41	22	35	26	29	45	28	23	35	50	560
MINITONAS-BOWSMAN RM																			
	F	13	36	42	49	62	57	44	45	47	58	49	79	52	68	56	41	59	857
	M	10	32	54	61	61	63	53	43	44	51	61	58	75	63	51	59	69	908
MINNEDOSA TOWN																			
	F	23	70	105	96	104	114	105	116	105	108	99	111	142	115	109	87	186	1,795
	M	11	89	108	103	110	98	117	92	106	96	102	112	138	135	90	86	133	1,726
MINTO-ODANAH RM																			
	F	0	5	9	7	12	3	10	5	8	15	5	11	25	24	14	19	30	202
	M	2	12	13	13	11	14	15	12	9	17	13	10	19	26	23	14	28	251
MOSSEY RIVER RM																			
	F	5	22	29	29	35	39	25	31	25	31	32	40	56	49	38	26	73	585
	M	5	28	28	29	33	32	35	25	26	26	32	38	62	60	39	39	57	594
MOUNTAIN - NORTH RM																			
	F	4	15	19	21	18	24	22	16	17	19	20	30	34	32	26	26	29	372
	M	1	17	21	16	25	19	39	16	21	18	22	30	33	43	30	26	29	406
MOUNTAIN - SOUTH RM																			
	F	0	10	11	5	17	10	5	5	6	7	10	11	17	24	10	6	18	172
	M	2	4	9	13	13	11	9	9	9	11	12	14	22	29	22	12	16	217
NEEPAWA TOWN																			
	F	42	129	200	213	164	113	133	224	258	205	154	134	144	141	138	101	324	2,817
	M	42	150	219	205	166	149	170	284	342	260	189	142	118	130	115	106	185	2,972

Manitoba Health, Healthy Living and Seniors Population Report - June 1, 2018

Prairie Mountain Health Region

Municipality	Gender	Under 1	1 - 4	5 - 9	10 - 14	15 - 19	20 - 24	25 - 29	30 - 34	35 - 39	40 - 44	45 - 49	50 - 54	55 - 59	60 - 64	65 - 69	70 - 74	75 +	Total
NORFOLK-TREHERNE MUN																			
	F	15	37	37	33	46	40	46	49	27	42	42	47	60	51	48	39	100	759
	M	6	35	50	46	42	44	51	52	30	35	47	55	55	59	52	40	58	757
NORTH CYPRESS-LANGFORD MUN																			
	F	6	18	34	35	38	45	34	25	32	29	34	41	68	73	56	23	58	649
	M	4	23	36	36	33	46	45	40	34	40	36	44	73	65	55	54	58	722
OAKLAND-WAWANESA MUN																			
	F	7	31	60	54	37	40	56	57	45	48	49	47	49	50	43	34	53	760
	M	16	45	52	66	48	48	45	55	39	43	41	62	45	56	39	21	54	775
OAKVIEW RM																			
	F	8	38	32	43	29	39	50	38	41	31	41	49	63	68	42	38	52	702
	M	5	29	48	41	34	36	74	43	32	42	40	50	78	72	41	46	46	757
PIPESTONE RM																			
	F	13	35	56	48	49	42	42	58	41	42	42	61	48	67	51	36	95	826
	M	5	44	71	52	37	47	53	51	51	38	48	45	63	69	62	26	68	830
PRAIRIE LAKES RM																			
	F	8	20	22	26	28	27	33	43	24	21	37	50	62	63	55	31	70	620
	M	6	20	24	39	33	32	37	32	31	28	26	41	66	70	57	47	52	641
PRAIRIE VIEW MUN																			
	F	9	56	81	66	62	60	72	61	56	58	61	62	89	101	57	57	111	1,119
	M	13	69	75	65	68	61	82	72	76	64	53	62	104	97	74	58	69	1,162
RIDING MOUNTAIN WEST RM																			
	F	2	13	24	24	35	35	29	31	17	25	35	43	57	52	42	26	47	537
	M	12	24	26	24	33	46	34	36	27	30	35	49	55	60	45	40	43	619
RIVERDALE MUN																			
	F	10	60	72	59	58	52	70	69	67	66	57	75	66	65	46	53	91	1,036
	M	13	53	72	60	56	58	58	78	62	58	50	71	76	72	53	46	74	1,010
ROBLIN MUN																			
	F	11	79	108	106	85	95	91	97	90	82	101	103	130	148	125	99	258	1,808
	M	19	81	123	86	96	120	92	109	89	93	93	96	136	152	126	117	168	1,796
ROSEDALE RM																			
	F	9	56	63	53	42	47	48	31	48	35	45	58	48	58	43	33	58	775
	M	12	45	69	61	52	63	64	39	33	42	39	52	70	57	51	35	64	848

Manitoba Health, Healthy Living and Seniors Population Report - June 1, 2018

Prairie Mountain Health Region

Municipality	Gender	Under 1	1 - 4	5 - 9	10 - 14	15 - 19	20 - 24	25 - 29	30 - 34	35 - 39	40 - 44	45 - 49	50 - 54	55 - 59	60 - 64	65 - 69	70 - 74	75 +	Total
ROSSBURN MUN																			
	F	4	29	46	37	28	32	25	32	30	33	30	37	46	38	40	26	74	587
	M	9	25	39	46	53	40	42	39	27	29	45	34	38	50	43	36	58	653
RUSSELL-BINSCARTH MUN																			
	F	18	75	93	82	63	96	78	92	92	86	89	98	91	96	88	70	190	1,497
	M	17	70	73	72	75	97	95	95	98	90	64	101	123	103	75	62	119	1,429
SIFTON RM																			
	F	9	28	58	46	54	47	37	43	39	50	45	37	48	60	45	37	41	724
	M	13	40	57	54	57	47	46	51	51	40	34	39	53	65	41	33	43	764
SOURIS-GLENWOOD MUN																			
	F	15	54	65	77	63	63	88	70	68	74	63	77	103	82	78	64	161	1,265
	M	15	81	72	63	80	77	76	70	73	67	68	53	90	93	61	65	115	1,219
STE ROSE MUN																			
	F	8	40	39	55	53	52	47	44	46	52	52	63	95	84	73	59	140	1,002
	M	12	37	53	49	58	54	44	56	55	46	50	63	67	78	74	73	106	975
SWAN RIVER TOWN																			
	F	39	126	161	150	131	170	193	151	143	149	156	183	192	146	161	164	343	2,758
	M	46	130	166	162	152	171	179	149	142	135	137	157	189	155	126	121	249	2,566
SWAN VALLEY WEST MUN																			
	F	7	26	34	45	35	36	44	47	39	32	51	51	66	79	82	50	113	837
	M	8	18	49	52	56	35	48	44	37	40	54	39	76	83	86	55	115	895
TWO BORDERS MUN																			
	F	2	27	28	19	26	21	34	19	28	24	17	42	43	55	45	38	48	516
	M	6	13	22	26	17	43	33	25	32	28	24	26	54	47	43	44	55	538
UNORG. TERRITORIES - PARKLAND																			
	F	22	108	116	117	99	109	87	75	64	80	75	67	62	66	41	30	35	1,253
	M	34	102	128	122	132	118	105	75	75	89	80	83	80	71	40	43	35	1,412
VICTORIA RM																			
	F	5	39	43	37	30	37	39	39	30	39	30	32	38	45	48	33	72	636
	M	12	50	61	47	50	41	44	28	32	35	25	35	40	41	53	35	57	686
VIRIDEN TOWN																			
	F	33	96	139	101	103	136	136	152	137	125	111	116	106	111	92	87	223	2,004
	M	20	124	159	117	106	117	110	151	126	123	114	102	110	114	75	64	137	1,869

Manitoba Health, Healthy Living and Seniors Population Report - June 1, 2018

Prairie Mountain Health Region

Municipality	Gender	Under 1	1 - 4	5 - 9	10 - 14	15 - 19	20 - 24	25 - 29	30 - 34	35 - 39	40 - 44	45 - 49	50 - 54	55 - 59	60 - 64	65 - 69	70 - 74	75 +	Total
WALLACE-WOODWORTH RM																			
	F	12	51	59	80	75	68	65	68	64	51	76	66	106	93	88	80	139	1,241
	M	26	58	69	79	81	93	94	69	57	59	66	79	102	110	86	66	117	1,311
WHITEHEAD RM																			
	F	4	15	24	20	22	27	24	24	31	20	24	20	31	21	16	20	17	360
	M	4	19	22	23	23	17	26	22	23	21	22	26	26	27	22	19	23	365
YELLOWHEAD RM																			
	F	13	43	52	41	56	51	63	50	59	64	58	62	87	95	84	61	155	1,094
	M	14	50	59	70	70	69	39	61	47	57	60	75	88	102	82	64	105	1,112
Non-FN Sub-Total(Sex)		F	943	4,062	5,071	4,881	4,596	5,036	5,328	5,411	4,868	4,693	4,909	5,691	5,566	4,784	3,863	8,329	83,242
		M	1,074	4,281	5,504	5,098	4,902	5,184	5,326	5,321	4,928	4,718	4,805	5,648	5,449	4,649	3,808	6,082	81,993
BIRDTAIL SIOUX FN																			
	F	5	27	15	20	14	11	13	9	9	8	6	6	2	6	3	0	0	154
	M	3	16	25	12	14	7	13	6	11	3	6	5	5	4	3	2	2	137
CRANE RIVER FN																			
	F	0	16	15	12	7	9	10	8	1	10	1	8	3	2	1	1	0	104
	M	1	6	9	11	9	8	7	3	2	5	6	1	1	4	3	2	1	79
EBB & FLOW FN																			
	F	10	48	48	54	42	34	39	24	19	23	24	24	22	13	9	5	6	444
	M	10	32	55	44	35	30	33	27	16	28	15	22	16	8	3	9	3	386
GAMBLERS FN																			
	F	1	2	2	0	2	1	3	0	2	1	0	1	2	1	0	0	1	19
	M	0	2	3	0	0	1	1	2	0	0	0	2	2	1	0	0	1	15
INDIAN BIRCH FN																			
	F	0	5	7	3	6	3	4	2	2	4	4	1	3	1	2	0	1	48
	M	2	7	5	5	4	5	1	1	4	5	3	1	2	0	1	1	0	47
KEESEKOOWENIN FN																			
	F	6	9	12	11	12	11	5	11	6	6	6	7	9	8	7	1	5	132
	M	1	12	13	10	12	7	6	6	9	4	5	6	7	8	1	1	2	110
OAK LAKE SIOUX FN																			
	F	1	4	14	9	5	2	5	9	7	6	5	12	9	6	2	1	3	100
	M	3	3	10	14	9	8	6	9	5	5	9	4	11	5	2	3	4	110

Manitoba Health, Healthy Living and Seniors Population Report - June 1, 2018

Prairie Mountain Health Region

Municipality	Gender	Under 1	1 - 4	5 - 9	10 - 14	15 - 19	20 - 24	25 - 29	30 - 34	35 - 39	40 - 44	45 - 49	50 - 54	55 - 59	60 - 64	65 - 69	70 - 74	75 +	Total
PINE CREEK FN																			
	F	3	21	25	31	12	16	19	15	19	19	16	13	18	11	9	5	4	256
	M	13	22	22	26	30	23	9	20	18	18	17	16	10	10	8	6	4	272
ROLLING RIVER FN																			
	F	2	8	12	13	9	8	4	10	10	3	10	13	10	5	3	1	2	123
	M	1	11	12	14	8	7	10	8	9	3	9	9	14	7	2	1	1	126
SHOAL RIVER FN																			
	F	10	27	46	26	15	15	25	23	8	9	12	10	8	5	3	2	2	246
	M	7	29	28	36	19	18	25	21	12	7	14	14	14	6	3	3	10	266
SIOUX VALLEY FN																			
	F	11	23	36	40	23	18	38	29	20	23	28	21	25	18	12	9	14	388
	M	6	28	40	32	33	29	34	28	26	27	22	34	22	17	7	9	7	401
VALLEY RIVER FN																			
	F	3	18	24	12	12	15	21	16	6	4	8	11	8	5	3	6	2	174
	M	2	10	24	12	18	16	11	9	7	7	11	8	12	4	5	3	5	164
WATERHEN FN																			
	F	4	15	12	13	16	13	15	5	6	12	13	5	5	7	2	6	2	151
	M	4	11	18	10	9	14	14	6	10	8	14	12	13	7	8	0	2	160
WAYWAYSEECAPPO FN																			
	F	11	49	61	58	56	42	40	27	34	26	35	27	19	16	15	15	3	534
	M	11	45	61	64	48	46	39	36	23	29	24	27	18	15	11	9	12	518
FN Sub-Total(Sex)																			
	F	67	272	329	302	231	198	241	188	149	154	168	159	143	104	71	52	45	2,873
	M	64	234	325	290	248	219	209	182	152	149	155	161	147	96	57	49	54	2,791
RHA Sub-Total (Sex)																			
	F	1,010	4,334	5,400	5,183	4,827	5,234	5,569	5,599	5,360	5,022	4,861	5,068	5,834	5,670	4,855	3,915	8,374	86,115
	M	1,138	4,515	5,829	5,388	5,150	5,403	5,535	5,503	5,368	5,077	4,873	4,966	5,795	5,545	4,706	3,857	6,136	84,784
RHA Total		2,148	8,849	11,229	10,571	9,977	10,637	11,104	11,102	10,728	10,099	9,734	10,034	11,629	11,215	9,561	7,772	14,510	170,899

Prairie Mountain Health Region

Municipality	2014	2015	2016	2017	2018
ALONSA RM - PARKLAND	1,542	1,521	1,523	1,505	1,505
ARGYLE RM	950	942	921	906	888
BOISSEVAIN-MORTON MUN	2,424	2,432	2,435	2,436	2,415
BRANDON CITY	51,282	52,236	53,102	53,998	54,196
BRENDA-WASKADA MUN	732	713	703	689	675
CARBERRY TOWN	2,389	2,427	2,499	2,526	2,538
CARTWRIGHT-ROBLIN MUNICIPALITY	1,241	1,236	1,254	1,244	1,258
CLANWILLIAN-ERICKSON MUN	1,046	1,048	1,028	1,048	1,063
CORNWALLIS RM	2,737	2,686	2,730	2,679	2,711
DAUPHIN CITY	8,868	8,883	8,979	9,022	9,161
DAUPHIN RM	1,651	1,673	1,674	1,670	1,649
DELORAINÉ-WINCHESTER MUN	1,499	1,480	1,459	1,465	1,485
ELLICE-ARCHIE RM	906	894	875	867	869
ELTON RM	1,786	1,795	1,844	1,897	1,923
ETHELBERT MUN	656	656	657	676	683
GILBERT PLAINS MUN	1,651	1,646	1,605	1,604	1,588
GLENBORO-SOUTH CYPRESS MUN	1,336	1,312	1,297	1,301	1,303
GLENELLA-LANSDOWNE RM	1,026	1,010	984	983	958
GRANDVIEW MUNICIPALITY	1,529	1,529	1,572	1,577	1,559
GRASSLAND MUN	1,519	1,508	1,493	1,513	1,510
HAMIOTA MUN	1,391	1,369	1,373	1,400	1,408
HARRISON-PARK MUN	1,697	1,725	1,758	1,773	1,771
KILLARNEY-TURTLE MOUNTAIN RM	3,550	3,588	3,582	3,605	3,664
LAKESHORE RM	1,374	1,371	1,384	1,359	1,337
MCCREARY MUN	979	950	944	948	959
MELITA TOWN	1,200	1,176	1,196	1,188	1,209
MINITONAS-BOWSMAN RM	1,785	1,768	1,726	1,728	1,765
MINNEDOSA TOWN	3,469	3,487	3,464	3,450	3,521
MINTO-ODANAH RM	519	503	481	463	453

Prairie Mountain Health Region

Municipality	2014	2015	2016	2017	2018
MOSSEY RIVER RM	1,205	1,197	1,214	1,190	1,179
MOUNTAIN - NORTH RM	816	796	804	812	778
MOUNTAIN - SOUTH RM	433	425	425	410	389
NEEPAWA TOWN	5,120	5,325	5,641	5,709	5,789
NORFOLK-TREHERNE MUN	1,542	1,473	1,485	1,527	1,516
NORTH CYPRESS-LANGFORD MUN	1,470	1,435	1,410	1,388	1,371
OAKLAND-WAWANESA MUN	1,466	1,461	1,505	1,512	1,535
OAKVIEW RM	1,531	1,498	1,497	1,472	1,459
PIPESTONE RM	1,637	1,634	1,646	1,669	1,656
PRAIRIE LAKES RM	1,284	1,280	1,260	1,261	1,261
PRAIRIE VIEW MUN	2,287	2,296	2,234	2,286	2,281
RIDING MOUNTAIN WEST RM	1,230	1,218	1,202	1,168	1,156
RIVERDALE MUN	2,015	1,989	1,996	2,007	2,046
ROBLIN MUN	3,710	3,603	3,578	3,602	3,604
ROSEDALE RM	1,647	1,648	1,632	1,615	1,623
ROSSBURN MUN	1,278	1,295	1,286	1,244	1,240
RUSSELL-BINSCARTH MUN	2,881	2,905	2,940	2,958	2,926
SIFTON RM	1,495	1,495	1,504	1,491	1,488
SOURIS-GLENWOOD MUN	2,484	2,473	2,449	2,489	2,484
STE ROSE MUN	1,974	1,981	2,007	1,997	1,977
SWAN RIVER TOWN	5,345	5,310	5,390	5,427	5,324
SWAN VALLEY WEST MUN	1,887	1,844	1,818	1,772	1,732
TWO BORDERS MUN	1,128	1,110	1,087	1,065	1,054
UNORG. TERRITORIES - PARKLAND	2,789	2,742	2,743	2,682	2,665
VICTORIA RM	1,323	1,329	1,330	1,341	1,322
VIRDEN TOWN	3,801	3,823	3,946	3,899	3,873
WALLACE-WOODWORTH RM	2,683	2,661	2,625	2,603	2,552
WHITEHEAD RM	734	733	726	737	725
YELLOWHEAD RM	2,208	2,240	2,200	2,209	2,206

Prairie Mountain Health Region

Municipality	2014	2015	2016	2017	2018
Non-FN Sub-Total	162,137	162,783	164,122	165,062	165,235
BIRDTAIL SIOUX FN	291	313	298	307	291
CRANE RIVER FN	197	208	187	188	183
EBB & FLOW FN	777	771	770	807	830
GAMBLERS FN	29	29	32	34	34
INDIAN BIRCH FN	101	102	93	95	95
KEESECKOOWENIN FN	249	250	251	250	242
OAK LAKE SIOUX FN	234	227	206	212	210
PINE CREEK FN	559	561	540	523	528
ROLLING RIVER FN	265	264	258	244	249
SHOAL RIVER FN	528	526	506	507	512
SIOUX VALLEY FN	798	790	806	769	789
VALLEY RIVER FN	321	312	321	337	338
WATERHEN FN	310	307	303	312	311
WAYWAYSEECAPPO FN	1,046	1,034	1,067	1,041	1,052
FN Sub-Total	5,705	5,694	5,638	5,626	5,664
R.H.A. Total	167,842	168,477	169,760	170,688	170,899

Prairie Mountain Health Region**Age Group 65+**

Municipality	2014	2015	2016	2017	2018
ALONSA RM - PARKLAND	211	212	217	212	213
ARGYLE RM	209	218	226	222	221
BOISSEVAIN-MORTON MUN	539	544	555	560	565
BRANDON CITY	7,416	7,603	7,819	7,965	8,204
BRENDA-WASKADA MUN	126	125	134	143	148
CARBERRY TOWN	402	410	419	431	432
CARTWRIGHT-ROBLIN MUNICIPALITY	220	220	220	219	220
CLANWILLIAN-ERICKSON MUN	268	266	268	270	271
CORNWALLIS RM	243	243	258	277	285
DAUPHIN CITY	2,006	2,033	2,087	2,093	2,123
DAUPHIN RM	305	324	329	340	361
DELORAIN-WINCHESTER MUN	376	371	363	373	390
ELLICE-ARCHIE RM	144	137	135	148	148
ELTON RM	202	206	209	218	233
ETHELBERT MUN	168	161	174	177	179
GILBERT PLAINS MUN	338	339	353	359	369
GLENBORO-SOUTH CYPRESS MUN	289	289	303	302	310
GLENELLA-LANSDOWNE RM	240	238	235	228	237
GRANDVIEW MUNICIPALITY	469	466	482	491	491
GRASSLAND MUN	270	261	270	274	283
HAMIOTA MUN	306	308	319	320	332
HARRISON-PARK MUN	480	493	526	542	561
KILLARNEY-TURTLE MOUNTAIN RM	818	814	828	830	855
LAKESHORE RM	313	317	325	327	329
MCCREARY MUN	267	267	256	265	274
MELITA TOWN	265	263	260	259	255
MINITONAS-BOWSMAN RM	330	336	328	323	335
MINNEDOSA TOWN	662	676	682	675	691
MINTO-ODANAH RM	129	130	125	128	128

Prairie Mountain Health Region**Age Group 65+**

Municipality	2014	2015	2016	2017	2018
MOSSEY RIVER RM	287	287	286	271	272
MOUNTAIN - NORTH RM	146	151	157	164	166
MOUNTAIN - SOUTH RM	87	89	89	85	84
NEEPAWA TOWN	901	924	948	960	969
NORFOLK-TREHERNE MUN	329	303	317	326	337
NORTH CYPRESS-LANGFORD MUN	285	296	302	303	304
OAKLAND-WAWANESA MUN	224	219	220	228	244
OAKVIEW RM	242	250	262	260	265
PIPESTONE RM	322	338	340	331	338
PRAIRIE LAKES RM	296	296	303	307	312
PRAIRIE VIEW MUN	433	430	423	415	426
RIDING MOUNTAIN WEST RM	239	230	242	240	243
RIVERDALE MUN	353	354	350	358	363
ROBLIN MUN	883	880	896	897	893
ROSEDALE RM	262	270	274	270	284
ROSSBURN MUN	266	274	279	273	277
RUSSELL-BINSCARTH MUN	628	615	617	604	604
SIFTON RM	233	232	239	243	240
SOURIS-GLENWOOD MUN	528	531	525	537	544
STE ROSE MUN	483	491	512	515	525
SWAN RIVER TOWN	1,160	1,167	1,178	1,172	1,164
SWAN VALLEY WEST MUN	467	458	469	488	501
TWO BORDERS MUN	256	256	261	269	273
UNORG. TERRITORIES - PARKLAND	220	229	223	210	224
VICTORIA RM	266	285	287	295	298
VIRDEN TOWN	682	681	694	692	678
WALLACE-WOODWORTH RM	566	557	566	578	576
WHITEHEAD RM	113	106	104	110	117
YELLOWHEAD RM	550	562	556	556	551

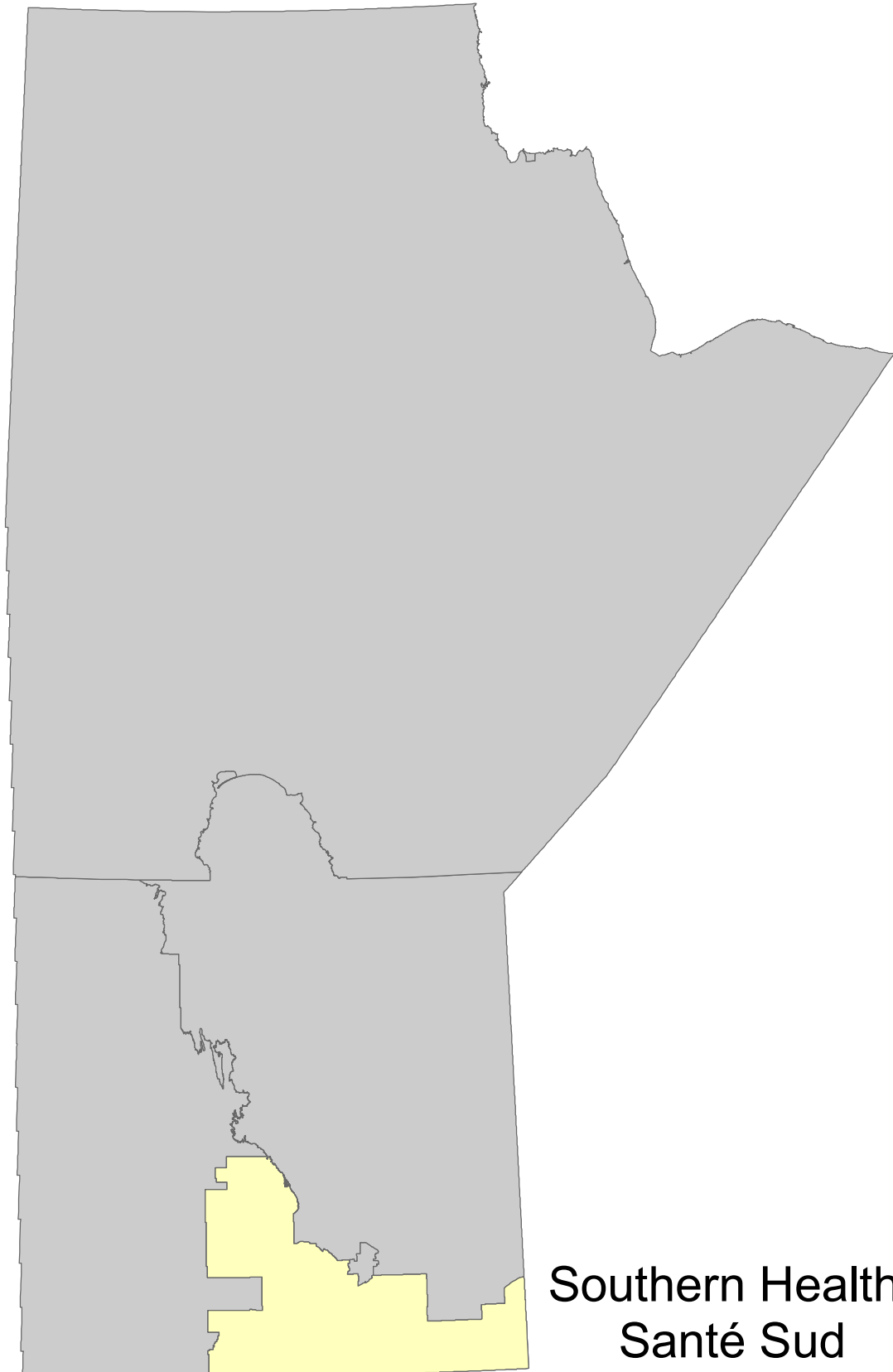
Prairie Mountain Health Region**Age Group 65+**

Municipality	2014	2015	2016	2017	2018
Non-FN Sub-Total	29,718	30,031	30,624	30,928	31,515
BIRDTAIL SIOUX FN	10	8	9	9	10
CRANE RIVER FN	9	8	9	7	8
EBB & FLOW FN	34	33	35	33	35
GAMBLERS FN	2	2	2	2	2
INDIAN BIRCH FN	4	5	6	6	5
KEESECKOOWENIN FN	16	17	18	16	17
OAK LAKE SIOUX FN	20	21	18	18	15
PINE CREEK FN	28	28	27	29	36
ROLLING RIVER FN	13	14	13	9	10
SHOAL RIVER FN	25	25	24	26	23
SIOUX VALLEY FN	58	56	54	55	58
VALLEY RIVER FN	18	20	23	21	24
WATERHEN FN	13	17	17	18	20
WAYWAYSEECAPPO FN	65	61	65	63	65
FN Sub-Total	315	315	320	312	328
R.H.A. Total	30,033	30,346	30,944	31,240	31,843

Population of Southern Health-Santé Sud

June 1, 2018

Manitoba RHAs -- Southern Health-Santé Sud



**Southern Health-
Santé Sud**

Manitoba Health, Healthy Living and Seniors Population Report - June 1, 2018

Southern Health-Santé Sud Region

District	Gender	Under 1	1 - 4	5 - 9	10 - 14	15 - 19	20 - 24	25 - 29	30 - 34	35 - 39	40 - 44	45 - 49	50 - 54	55 - 59	60 - 64	65 - 69	70 - 74	75 +	Total
Southern East Zone																			
Hanover																			
	F	137	585	700	657	652	638	547	518	477	483	406	428	385	304	212	149	280	7,558
	M	138	586	764	699	652	630	573	476	507	441	463	414	407	352	201	162	221	7,686
Niverville/Richot																			
	F	110	458	571	501	421	379	487	596	569	502	421	400	400	353	264	176	272	6,880
	M	117	446	586	516	441	422	442	502	564	507	462	423	429	355	282	202	221	6,917
Rural East																			
	F	15	72	103	102	118	114	108	105	96	95	108	123	167	174	151	108	183	1,942
	M	14	99	119	116	113	103	112	125	99	104	112	149	184	180	179	125	201	2,134
Ste Anne/La Broquerie																			
	F	91	455	528	493	465	450	476	443	443	374	378	373	389	330	271	209	357	6,525
	M	117	464	508	486	489	466	473	438	438	386	399	405	441	324	275	231	334	6,674
Steinbach																			
	F	173	640	808	708	695	858	779	751	758	636	601	596	536	525	447	366	837	10,714
	M	149	753	863	789	698	894	715	754	719	637	598	550	561	473	367	337	567	10,424
Tache																			
	F	72	248	432	386	385	311	326	339	385	362	368	337	345	266	209	125	125	5,021
	M	70	306	396	398	400	364	333	308	347	382	359	344	375	296	217	166	130	5,191
	F	598	2,458	3,142	2,847	2,736	2,750	2,723	2,752	2,728	2,452	2,282	2,257	2,222	1,952	1,554	1,133	2,054	38,640
	M	605	2,654	3,236	3,004	2,793	2,879	2,648	2,603	2,674	2,457	2,393	2,285	2,397	1,980	1,521	1,223	1,674	39,026

Manitoba Health, Healthy Living and Seniors Population Report - June 1, 2018

Southern Health-Santé Sud Region

District	Gender	Under 1	1 - 4	5 - 9	10 - 14	15 - 19	20 - 24	25 - 29	30 - 34	35 - 39	40 - 44	45 - 49	50 - 54	55 - 59	60 - 64	65 - 69	70 - 74	75 +	Total
Southern Mid Zone																			
Carman	F	30	172	223	158	146	159	170	180	161	145	131	157	201	181	155	151	372	2,892
	M	47	191	241	200	186	205	166	163	182	148	139	149	199	192	136	156	258	2,958
MacDonald	F	53	189	307	294	276	253	203	239	274	315	295	311	296	238	181	123	145	3,992
	M	55	216	272	278	287	297	197	226	270	294	292	299	338	241	184	140	149	4,035
Morris	F	31	145	195	169	194	181	173	159	160	161	137	146	170	145	124	90	198	2,578
	M	38	143	184	208	169	190	183	172	161	146	158	145	175	154	128	85	142	2,581
Notre Dame/St Claude																			
	F	12	92	110	83	66	85	87	93	85	57	66	99	109	88	79	42	113	1,366
	M	30	89	120	93	90	91	96	90	85	72	71	102	112	111	79	65	81	1,477
Red River South																			
	F	31	107	172	160	137	148	135	131	117	127	118	142	172	166	109	84	159	2,215
	M	28	128	148	156	163	179	148	127	135	125	138	156	175	156	145	93	121	2,321
St. Pierre																			
	F	31	113	171	129	131	135	153	141	162	115	116	131	165	142	113	101	167	2,216
	M	26	122	158	143	115	134	127	134	173	152	106	124	163	140	134	105	124	2,180
	F	188	818	1,178	993	950	961	921	943	959	920	863	986	1,113	960	761	591	1,154	15,259
	M	224	889	1,123	1,078	1,010	1,096	917	912	1,006	937	904	975	1,162	994	806	644	875	15,552

Manitoba Health, Healthy Living and Seniors Population Report - June 1, 2018

Southern Health-Santé Sud Region

District	Gender	Under 1	1 - 4	5 - 9	10 - 14	15 - 19	20 - 24	25 - 29	30 - 34	35 - 39	40 - 44	45 - 49	50 - 54	55 - 59	60 - 64	65 - 69	70 - 74	75 +	Total
Southern North Zone																			
Cartier/St. François Xavier																			
	F	60	254	379	352	275	213	220	261	271	246	275	296	297	272	189	139	182	4,181
	M	50	301	372	348	317	242	247	267	269	276	268	300	306	269	220	138	178	4,368
City of Portage La Prairie																			
	F	84	434	561	486	467	506	567	530	497	461	469	443	585	544	355	367	767	8,123
	M	119	478	571	462	536	531	543	547	458	461	440	495	532	476	363	300	470	7,782
MacGregor																			
	F	28	134	151	158	155	156	128	122	127	136	108	130	148	113	111	80	174	2,159
	M	30	160	169	158	167	172	168	133	151	123	135	126	152	134	95	89	135	2,297
Rural Portage																			
	F	40	212	249	259	228	223	227	202	206	208	187	193	255	227	192	109	163	3,380
	M	50	214	290	250	279	263	240	237	217	209	190	229	258	222	188	133	169	3,638
Seven Regions																			
	F	46	210	298	257	214	219	208	180	148	148	185	189	137	160	125	83	178	2,985
	M	71	251	292	301	253	260	228	200	176	155	161	193	179	156	130	113	166	3,285
	F	258	1,244	1,638	1,512	1,339	1,317	1,350	1,295	1,249	1,199	1,224	1,251	1,422	1,316	972	778	1,464	20,828
	M	320	1,404	1,694	1,519	1,552	1,468	1,426	1,384	1,271	1,224	1,194	1,343	1,427	1,257	996	773	1,118	21,370

Southern Health-Santé Sud Region **Manitoba Health, Healthy Living and Seniors Population Report - June 1, 2018**

District	Gender	Under 1	1 - 4	5 - 9	10 - 14	15 - 19	20 - 24	25 - 29	30 - 34	35 - 39	40 - 44	45 - 49	50 - 54	55 - 59	60 - 64	65 - 69	70 - 74	75 +	Total
Southern West Zone																			
Altona																			
	F	73	310	390	388	363	373	322	307	293	302	275	259	280	219	188	159	356	4,857
	M	75	319	458	398	439	406	298	310	293	264	292	296	271	243	185	157	245	4,949
Lorne/Louise/Pembina																			
	F	64	195	239	262	250	261	222	239	202	187	197	265	298	267	224	183	441	3,996
	M	49	257	294	239	256	255	269	247	220	192	213	259	315	292	240	184	314	4,095
Morden																			
	F	98	293	394	303	296	336	375	375	393	317	282	309	301	273	271	209	502	5,327
	M	75	322	403	381	326	321	354	376	385	314	316	264	301	261	227	186	358	5,170
Roland/Thompson																			
	F	14	76	81	76	66	77	56	65	67	60	46	60	56	69	55	32	68	1,024
	M	23	67	88	83	69	79	76	72	64	56	42	61	57	70	68	47	55	1,077
Stanley																			
	F	42	160	238	276	313	235	161	173	152	174	206	159	186	114	80	45	40	2,754
	M	38	182	273	297	328	274	161	169	158	153	193	182	176	135	96	52	47	2,914
Winkler																			
	F	165	653	778	697	633	692	669	607	545	482	476	422	440	394	285	227	604	8,769
	M	162	669	754	738	753	735	697	584	501	520	452	454	422	366	286	176	398	8,667
	F	456	1,687	2,120	2,002	1,921	1,974	1,805	1,766	1,652	1,522	1,482	1,474	1,561	1,336	1,103	855	2,011	26,727
	M	422	1,816	2,270	2,136	2,171	2,070	1,855	1,758	1,621	1,499	1,508	1,516	1,542	1,367	1,102	802	1,417	26,872
RHA Sub-Total (Sex)																			
	F	1,500	6,207	8,078	7,354	6,946	7,002	6,799	6,756	6,588	6,093	5,851	5,968	6,318	5,564	4,390	3,357	6,683	101,454
	M	1,571	6,763	8,323	7,737	7,526	7,513	6,846	6,657	6,572	6,117	5,999	6,119	6,528	5,598	4,425	3,442	5,084	102,820
RHA Total																			
		3,071	12,970	16,401	15,091	14,472	14,515	13,645	13,413	13,160	12,210	11,850	12,087	12,846	11,162	8,815	6,799	11,767	204,274

Southern Health-Santé Sud Region

District	2014	2015	2016	2017	2018
Southern East Zone					
Hanover	13,002	13,863	14,356	14,727	15,244
Niverville/Richot	11,684	12,141	12,599	13,164	13,797
Rural East	3,956	4,024	4,038	4,073	4,076
Ste Anne/La Broquerie	11,542	12,565	13,142	13,530	13,199
Steinbach	20,817	20,252	20,538	21,000	21,138
Tache	9,263	9,468	9,438	9,424	10,212
Southern Mid Zone					
Carman	5,728	5,744	5,757	5,832	5,850
MacDonald	7,136	7,342	7,516	7,753	8,027
Morris	5,076	5,068	5,093	5,128	5,159
Notre Dame/St Claude	2,809	2,790	2,813	2,846	2,843
Red River South	4,648	4,662	4,590	4,515	4,536
St. Pierre	4,244	4,266	4,314	4,375	4,396
Southern North Zone					
Cartier/St. François Xavier	7,373	7,552	7,669	8,127	8,549
City of Portage La Prairie	15,529	15,538	15,777	15,999	15,905
MacGregor	4,362	4,381	4,391	4,414	4,456
Rural Portage	6,889	6,995	7,045	7,084	7,018
Seven Regions	6,153	6,173	6,166	6,184	6,270

Note: Manitoba Health Districts are defined by the RHAs, and are subject to change over time. For comparability, all populations have been tabulated using current district definitions, even if different definitions were in use during that population's year.

Southern Health-Santé Sud Region

District	2014	2015	2016	2017	2018
Southern West Zone					
Altona	9,522	9,513	9,685	9,753	9,806
Lorne/Louise/Pembina	7,930	8,015	8,019	8,058	8,091
Morden	9,464	9,644	9,945	10,191	10,497
Roland/Thompson	2,082	2,089	2,104	2,083	2,101
Stanley	5,851	5,850	5,769	5,719	5,668
Winkler	15,781	16,322	16,712	17,046	17,436
R.H.A. Total	190,841	194,257	197,476	201,025	204,274

Note: Manitoba Health Districts are defined by the RHAs, and are subject to change over time. For comparability, all populations have been tabulated using current district definitions, even if different definitions were in use during that population's year.

Southern Health-Santé Sud Region	Age Group 65+				
	District	2014	2015	2016	2017
Southern East Zone					
Hanover	1,045	1,076	1,147	1,176	1,225
Niverville/Richot	1,029	1,126	1,239	1,330	1,417
Rural East	892	905	914	929	947
Ste Anne/La Broquerie	1,500	1,575	1,636	1,706	1,677
Steinbach	2,499	2,579	2,673	2,814	2,921
Tache	685	741	782	798	972
Southern Mid Zone					
Carman	1,201	1,207	1,224	1,229	1,228
MacDonald	736	794	834	873	922
Morris	698	701	718	748	767
Notre Dame/St Claude	434	441	450	463	459
Red River South	662	665	668	690	711
St. Pierre	660	672	685	715	744
Southern North Zone					
Cartier/St. François Xavier	819	859	919	972	1,046
City of Portage La Prairie	2,516	2,535	2,593	2,610	2,622
MacGregor	627	640	658	667	684
Rural Portage	857	868	894	930	954
Seven Regions	755	768	778	774	795

Note: Manitoba Health Districts are defined by the RHAs, and are subject to change over time. For comparability, all populations have been tabulated using current district definitions, even if different definitions were in use during that population's year.

Southern Health-Santé Sud Region		Age Group 65+				
District	2014	2015	2016	2017	2018	
Southern West Zone						
Altona	1,174	1,203	1,220	1,251	1,290	
Lorne/Louise/Pembina	1,523	1,552	1,558	1,568	1,586	
Morden	1,521	1,561	1,630	1,670	1,753	
Roland/Thompson	285	291	305	320	325	
Stanley	328	341	336	354	360	
Winkler	1,732	1,771	1,838	1,898	1,976	
R.H.A. Total	24,178	24,871	25,699	26,485	27,381	

Note: Manitoba Health Districts are defined by the RHAs, and are subject to change over time. For comparability, all populations have been tabulated using current district definitions, even if different definitions were in use during that population's year.

Southern Health-Santé Sud Region **Manitoba Health, Healthy Living and Seniors Population Report** **June 1, 2018**

Municipality	Gender	Under 1	1 - 4	5 - 9	10 - 14	15 - 19	20 - 24	25 - 29	30 - 34	35 - 39	40 - 44	45 - 49	50 - 54	55 - 59	60 - 64	65 - 69	70 - 74	75 +	Total
ALONSA RM - CENTRAL																			
	F	10	30	39	23	20	27	30	26	13	12	22	22	11	15	11	11	10	332
	M	6	44	44	36	28	41	43	21	24	27	24	32	22	21	13	17	11	454
ALTONA TOWN																			
	F	37	157	179	178	183	191	171	165	171	174	159	137	164	129	115	107	294	2,711
	M	40	149	239	177	228	204	151	177	162	154	173	156	154	130	112	101	184	2,691
CARMAN TOWN																			
	F	24	124	156	95	96	123	127	132	111	112	92	101	139	118	103	113	326	2,092
	M	34	136	153	124	127	134	122	116	129	101	102	109	126	132	84	101	204	2,034
CARTIER RM																			
	F	31	90	132	115	104	98	107	113	106	77	98	114	115	102	54	45	74	1,575
	M	25	115	142	130	125	96	95	120	99	101	83	113	119	104	71	36	64	1,638
DE SALABERRY RM																			
	F	20	58	103	82	88	85	91	79	109	74	68	87	109	93	81	73	112	1,412
	M	18	71	104	97	71	90	73	85	125	104	65	89	114	85	99	75	87	1,452
DUFFERIN RM																			
	F	6	48	67	63	50	36	43	48	50	33	39	56	62	63	52	38	46	800
	M	13	55	88	76	59	71	44	47	53	47	37	40	73	60	52	55	54	924
EMERSON-FRANKLIN RM																			
	F	19	75	117	96	89	90	75	77	75	73	73	94	110	99	80	60	109	1,411
	M	14	72	84	97	106	112	83	77	83	80	82	89	104	113	91	65	90	1,442
GREY RM																			
	F	12	92	110	83	66	85	87	93	85	57	66	99	109	88	79	42	113	1,366
	M	30	89	120	93	90	91	96	90	85	72	71	102	112	111	79	65	81	1,477
HANOVER RM																			
	F	137	585	700	657	652	638	547	518	477	483	406	428	385	304	212	149	280	7,558
	M	138	586	764	699	652	630	573	476	507	441	463	414	407	352	201	162	221	7,686
HEADINGLEY RM																			
	F	19	133	193	192	134	86	84	102	114	124	127	137	140	127	105	77	85	1,979
	M	19	144	180	182	150	112	119	108	123	132	133	129	141	130	109	83	87	2,081
LA BROUQUERIE RM																			
	F	45	233	273	273	238	201	222	190	210	180	163	155	119	95	55	53	78	2,783
	M	65	249	257	272	253	228	194	192	188	164	177	157	163	104	65	61	61	2,850

Southern Health-Santé Sud Region **Manitoba Health, Healthy Living and Seniors Population Report** **June 1, 2018**

Municipality	Gender	Under 1	1 - 4	5 - 9	10 - 14	15 - 19	20 - 24	25 - 29	30 - 34	35 - 39	40 - 44	45 - 49	50 - 54	55 - 59	60 - 64	65 - 69	70 - 74	75 +	Total
LORNE MUN																			
	F	23	85	107	122	118	119	93	97	94	72	94	120	125	108	72	79	181	1,709
	M	14	102	123	111	107	132	126	93	97	87	93	126	151	112	89	68	147	1,778
LOUISE MUN																			
	F	21	49	42	53	51	48	56	64	37	42	39	53	74	71	81	46	128	955
	M	22	75	62	41	50	36	63	71	40	43	40	57	68	82	76	56	88	970
MACDONALD RM																			
	F	53	189	307	294	276	253	203	239	274	315	295	311	296	238	181	123	145	3,992
	M	55	216	272	278	287	297	197	226	270	294	292	299	338	241	184	140	149	4,035
MONTCALM RM																			
	F	8	15	32	35	33	39	38	39	28	39	28	39	47	50	25	19	48	562
	M	6	33	34	30	33	42	42	35	35	31	36	52	60	36	50	22	30	607
MORDEN TOWN																			
	F	98	293	394	303	296	336	375	375	393	317	282	309	301	273	271	209	502	5,327
	M	75	322	403	381	326	321	354	376	385	314	316	264	301	261	227	186	358	5,170
MORRIS RM																			
	F	19	85	120	100	109	92	95	91	80	70	66	82	92	79	77	52	92	1,401
	M	17	80	105	121	87	104	110	93	85	82	73	79	92	87	72	49	80	1,416
MORRIS TOWN																			
	F	12	60	75	69	85	89	78	68	80	91	71	64	78	66	47	38	106	1,177
	M	21	63	79	87	82	86	73	79	76	64	85	66	83	67	56	36	62	1,165
NIVERVILLE TOWN																			
	F	51	205	293	223	171	135	203	283	245	222	154	107	101	112	81	70	138	2,794
	M	54	215	271	216	160	165	167	230	241	222	188	124	101	90	79	66	81	2,670
NORTH NORFOLK MUN																			
	F	28	134	151	158	155	156	128	122	127	136	108	130	148	113	111	80	174	2,159
	M	30	160	169	158	167	172	168	133	151	123	135	126	152	134	95	89	135	2,297
PEMBINA MUN																			
	F	18	57	82	80	76	82	61	72	65	67	56	80	87	79	68	55	128	1,213
	M	13	69	90	76	90	80	68	74	67	57	70	72	86	93	72	59	78	1,214
PINEY RM																			
	F	7	25	41	40	44	40	35	42	51	45	41	48	77	85	73	57	71	822
	M	6	35	52	55	52	42	43	58	44	54	44	64	88	75	85	69	95	961

Southern Health-Santé Sud Region **Manitoba Health, Healthy Living and Seniors Population Report** **June 1, 2018**

Municipality	Gender	Under 1	1 - 4	5 - 9	10 - 14	15 - 19	20 - 24	25 - 29	30 - 34	35 - 39	40 - 44	45 - 49	50 - 54	55 - 59	60 - 64	65 - 69	70 - 74	75 +	Total
PORTAGE LA PRAIRIE CITY																			
	F	84	434	561	486	467	506	567	530	497	461	469	443	585	544	355	367	767	8,123
	M	119	478	571	462	536	531	543	547	458	461	440	495	532	476	363	300	470	7,782
PORTAGE LA PRAIRIE RM																			
	F	30	169	183	203	182	187	194	173	171	182	164	171	229	209	177	104	156	2,884
	M	34	169	229	192	221	226	201	201	190	172	166	207	233	203	177	122	161	3,104
RHINELAND MUN																			
	F	36	153	211	210	180	182	151	142	122	128	116	122	116	90	73	52	62	2,146
	M	35	170	219	221	211	202	147	133	131	110	119	140	117	113	73	56	61	2,258
RITCHOT RM																			
	F	59	253	278	278	250	244	284	313	324	280	267	293	299	241	183	106	134	4,086
	M	63	231	315	300	281	257	275	272	323	285	274	299	328	265	203	136	140	4,247
ROLAND RM																			
	F	4	41	38	26	29	35	33	28	26	22	18	25	28	24	27	11	26	441
	M	8	35	37	30	31	46	45	31	27	21	16	19	23	38	28	23	20	478
ST FRANCOIS XAVIER RM																			
	F	10	31	54	45	37	29	29	46	51	45	50	45	42	43	30	17	23	627
	M	6	42	50	36	42	34	33	39	47	43	52	58	46	35	40	19	27	649
ST PIERRE-JOLYS VILLAGE																			
	F	11	55	68	47	43	50	62	62	53	41	48	44	56	49	32	28	55	804
	M	8	51	54	46	44	44	54	49	48	48	41	35	49	55	35	30	37	728
STANLEY RM																			
	F	42	160	238	276	313	235	161	173	152	174	206	159	186	114	80	45	40	2,754
	M	38	182	273	297	328	274	161	169	158	153	193	182	176	135	96	52	47	2,914
STE ANNE RM																			
	F	25	141	163	135	145	168	151	157	143	128	152	157	167	132	99	68	73	2,204
	M	36	130	161	136	161	156	178	156	165	139	145	178	191	134	110	83	104	2,363
STE ANNE TOWN																			
	F	21	81	92	85	82	81	103	96	90	66	63	61	103	103	117	88	206	1,538
	M	16	85	90	78	75	82	101	90	85	83	77	70	87	86	100	87	169	1,461
STEINBACH CITY																			
	F	173	640	808	708	695	858	779	751	758	636	601	596	536	525	447	366	837	10,714
	M	149	753	863	789	698	894	715	754	719	637	598	550	561	473	367	337	567	10,424

Southern Health-Santé Sud Region **Manitoba Health, Healthy Living and Seniors Population Report** **June 1, 2018**

Municipality	Gender	Under 1	1 - 4	5 - 9	10 - 14	15 - 19	20 - 24	25 - 29	30 - 34	35 - 39	40 - 44	45 - 49	50 - 54	55 - 59	60 - 64	65 - 69	70 - 74	75 +	Total
STUARTBURN RM																			
	F	7	37	57	58	68	68	57	49	38	44	57	59	70	50	53	35	87	894
	M	7	59	55	58	54	54	62	52	41	39	61	74	68	70	63	35	75	927
TACHE RM																			
	F	72	248	432	386	385	311	326	339	385	362	368	337	345	266	209	125	125	5,021
	M	70	306	396	398	400	364	333	308	347	382	359	344	375	296	217	166	130	5,191
THOMPSON RM																			
	F	10	35	43	50	37	42	23	37	41	38	28	35	28	45	28	21	42	583
	M	15	32	51	53	38	33	31	41	37	35	26	42	34	32	40	24	35	599
UNORG. TERRITORIES - SOUTH EASTMAN																			
	F	1	9	5	4	6	6	15	10	7	6	9	15	18	37	24	16	24	212
	M	1	4	12	3	7	6	6	14	13	10	6	10	26	34	31	21	29	233
WESTLAKE-GLADSTONE MUN																			
	F	12	64	107	88	84	91	83	84	75	70	91	101	85	107	94	64	160	1,460
	M	24	79	92	106	98	98	74	86	78	76	87	97	115	100	93	86	142	1,531
WINKLER CITY																			
	F	165	653	778	697	633	692	669	607	545	482	476	422	440	394	285	227	604	8,769
	M	162	669	754	738	753	735	697	584	501	520	452	454	422	366	286	176	398	8,667
Non-FN Sub-Total(Sex)																			
	F	1,460	6,026	7,829	7,116	6,770	6,834	6,636	6,473	5,980	5,730	5,858	6,222	5,480	4,347	3,336	6,661	6,661	99,390
	M	1,506	6,555	8,057	7,480	7,308	7,322	6,660	6,503	6,437	6,008	5,894	6,013	6,438	5,531	4,383	3,414	5,059	100,568
BUFFALO POINT FN																			
	F	0	1	0	0	0	0	1	4	0	0	1	1	2	2	1	0	1	14
	M	0	1	0	0	0	1	1	1	1	1	1	1	2	1	0	0	2	13
DAKOTA PLAINS FN																			
	F	1	0	6	4	2	1	0	0	7	0	1	0	5	0	1	0	0	28
	M	0	2	1	3	2	0	0	3	0	4	1	3	3	0	1	1	2	26
DAKOTA TIPI FN																			
	F	0	4	7	6	2	3	3	5	5	3	2	1	0	7	2	1	1	52
	M	1	5	5	7	10	7	5	10	4	7	2	4	3	8	2	1	0	81
LONG PLAINS FN																			
	F	9	39	53	46	42	32	30	24	23	23	20	21	21	11	12	4	6	416
	M	15	38	55	48	46	30	34	23	23	26	21	15	19	11	8	9	6	427

Southern Health-Santé Sud Region **Manitoba Health, Healthy Living and Seniors Population Report** **June 1, 2018**

Municipality	Gender	Under 1	1 - 4	5 - 9	10 - 14	15 - 19	20 - 24	25 - 29	30 - 34	35 - 39	40 - 44	45 - 49	50 - 54	55 - 59	60 - 64	65 - 69	70 - 74	75 +	Total
ROSEAU RIVER FN																			
	F	4	17	23	29	15	19	22	15	14	15	17	9	15	17	4	5	2	242
	M	8	23	30	29	24	25	23	15	17	14	20	15	11	7	4	6	1	272
SANDY BAY FN																			
	F	24	116	152	146	110	101	95	70	60	66	72	66	41	38	20	8	8	1,193
	M	41	128	156	159	127	121	111	93	74	52	50	64	42	35	24	10	13	1,300
SWAN LAKE FN																			
	F	2	4	8	7	5	12	12	6	6	6	8	12	12	9	3	3	4	119
	M	0	11	19	11	9	7	12	9	16	5	10	4	10	5	3	1	1	133
FN Sub-Total(Sex)																			
	F	40	181	249	238	176	168	163	124	115	113	121	110	96	84	43	21	22	2,064
	M	65	208	266	257	218	191	186	154	135	109	105	106	90	67	42	28	25	2,252
RHA Sub-Total (Sex)																			
	F	1,500	6,207	8,078	7,354	6,946	7,002	6,799	6,756	6,588	6,093	5,851	5,968	6,318	5,564	4,390	3,357	6,683	101,454
	M	1,571	6,763	8,323	7,737	7,526	7,513	6,846	6,657	6,572	6,117	5,999	6,119	6,528	5,598	4,425	3,442	5,084	102,820
RHA Total																			
		3,071	12,970	16,401	15,091	14,472	14,515	13,645	13,413	13,160	12,210	11,850	12,087	12,846	11,162	8,815	6,799	11,767	204,274

Southern Health-Santé Sud Region

Municipality	2014	2015	2016	2017	2018
ALONSA RM - CENTRAL	767	774	776	756	786
ALTONA TOWN	5,048	5,111	5,244	5,338	5,402
CARMAN TOWN	3,905	3,941	4,004	4,089	4,126
CARTIER RM	3,151	3,183	3,213	3,214	3,213
DE SALABERRY RM	2,822	2,844	2,854	2,905	2,864
DUFFERIN RM	1,823	1,803	1,753	1,743	1,724
EMERSON-FRANKLIN RM	2,904	2,895	2,870	2,817	2,853
GREY RM	2,809	2,790	2,813	2,846	2,843
HANOVER RM	13,002	13,863	14,356	14,727	15,244
HEADINGLEY RM	3,016	3,144	3,219	3,649	4,060
LA BROQUERIE RM	4,064	4,906	5,237	5,472	5,633
LORNE MUN	3,449	3,514	3,542	3,496	3,487
LOUISE MUN	1,901	1,903	1,895	1,913	1,925
MACDONALD RM	7,136	7,342	7,516	7,753	8,027
MONTCALM RM	1,174	1,190	1,179	1,175	1,169
MORDEN TOWN	9,464	9,644	9,945	10,191	10,497
MORRIS RM	2,796	2,802	2,812	2,794	2,817
MORRIS TOWN	2,280	2,266	2,281	2,334	2,342
NIVERVILLE TOWN	4,635	4,903	5,005	5,151	5,464
NORTH NORFOLK MUN	4,362	4,381	4,391	4,414	4,456
PEMBINA MUN	2,349	2,364	2,352	2,414	2,427
PINEY RM	1,728	1,757	1,746	1,782	1,783
PORTAGE LA PRAIRIE CITY	15,529	15,538	15,777	15,999	15,905
PORTAGE LA PRAIRIE RM	5,870	5,944	5,979	6,039	5,988
RHINELAND MUN	4,474	4,402	4,441	4,415	4,404
RITCHOT RM	7,049	7,238	7,594	8,013	8,333
ROLAND RM	911	928	953	934	919
ST FRANCOIS XAVIER RM	1,206	1,225	1,237	1,264	1,276
ST PIERRE-JOLYS VILLAGE	1,422	1,422	1,460	1,470	1,532

Southern Health-Santé Sud Region

Municipality	2014	2015	2016	2017	2018
STANLEY RM	5,851	5,850	5,769	5,719	5,668
STE ANNE RM	4,924	5,001	5,116	5,224	4,567
STE ANNE TOWN	2,554	2,658	2,789	2,834	2,999
STEINBACH CITY	20,817	20,252	20,538	21,000	21,138
STUARTBURN RM	1,737	1,777	1,805	1,806	1,821
TACHE RM	9,263	9,468	9,438	9,424	10,212
THOMPSON RM	1,171	1,161	1,151	1,149	1,182
UNORG. TERRITORIES - SOUTH EAST	462	459	457	454	445
WESTLAKE-GLADSTONE MUN	2,914	2,904	2,943	2,941	2,991
WINKLER CITY	15,781	16,322	16,712	17,046	17,436
Non-FN Sub-Total	186,520	189,869	193,162	196,704	199,958
BUFFALO POINT FN	29	31	30	31	27
DAKOTA PLAINS FN	38	35	40	42	54
DAKOTA TIPI FN	124	131	143	139	133
LONG PLAINS FN	857	885	883	864	843
ROSEAU RIVER FN	570	577	541	523	514
SANDY BAY FN	2,472	2,495	2,447	2,487	2,493
SWAN LAKE FN	231	234	230	235	252
FN Sub-Total	4,321	4,388	4,314	4,321	4,316
R.H.A. Total	190,841	194,257	197,476	201,025	204,274

Southern Health-Santé Sud Region**Age Group 65+**

Municipality	2014	2015	2016	2017	2018
ALONSA RM - CENTRAL	72	73	77	78	73
ALTONA TOWN	829	848	864	877	913
CARMAN TOWN	922	923	933	930	931
CARTIER RM	303	315	327	336	344
DE SALABERRY RM	470	484	498	514	527
DUFFERIN RM	279	284	291	299	297
EMERSON-FRANKLIN RM	454	463	459	479	495
GREY RM	434	441	450	463	459
HANOVER RM	1,045	1,076	1,147	1,176	1,225
HEADINGLEY RM	396	405	451	488	546
LA BROQUERIE RM	313	330	342	371	373
LORNE MUN	619	634	642	631	636
LOUISE MUN	441	448	451	465	475
MACDONALD RM	736	794	834	873	922
MONTCALM RM	187	183	189	191	194
MORDEN TOWN	1,521	1,561	1,630	1,670	1,753
MORRIS RM	365	370	389	402	422
MORRIS TOWN	333	331	329	346	345
NIVERVILLE TOWN	398	424	448	472	515
NORTH NORFOLK MUN	627	640	658	667	684
PEMBINA MUN	447	454	450	458	460
PINEY RM	419	430	433	437	450
PORTAGE LA PRAIRIE CITY	2,516	2,535	2,593	2,610	2,622
PORTAGE LA PRAIRIE RM	810	822	844	875	897
RHINELAND MUN	345	355	356	374	377
RITCHOT RM	631	702	791	858	902
ROLAND RM	113	120	128	133	135
ST FRANCOIS XAVIER RM	120	139	141	148	156
ST PIERRE-JOLYS VILLAGE	190	188	187	201	217

Southern Health-Santé Sud Region**Age Group 65+**

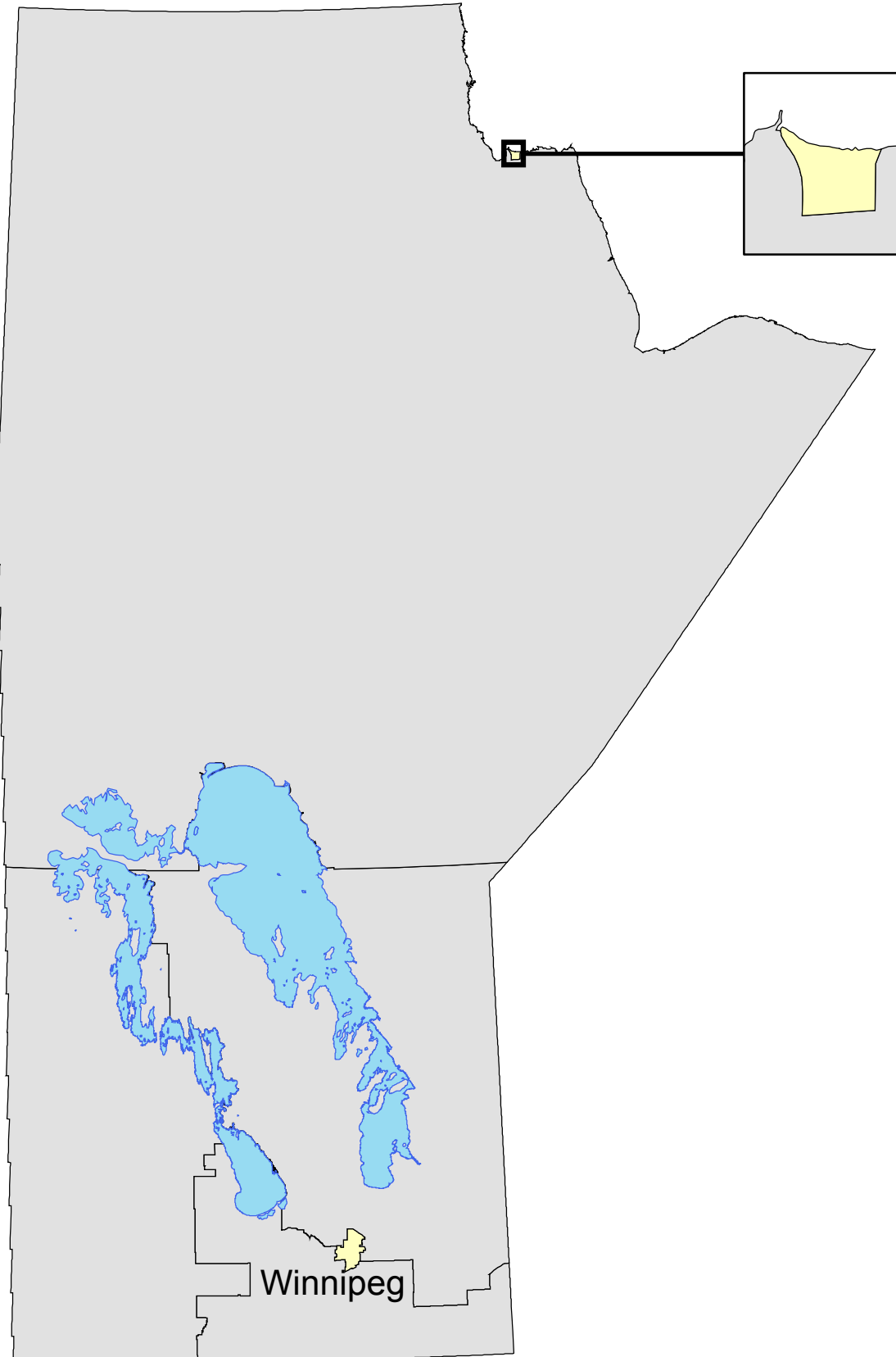
Municipality	2014	2015	2016	2017	2018
STANLEY RM	328	341	336	354	360
STE ANNE RM	558	594	612	637	537
STE ANNE TOWN	629	651	682	698	767
STEINBACH CITY	2,499	2,579	2,673	2,814	2,921
STUARTBURN RM	346	338	342	341	348
TACHE RM	685	741	782	798	972
THOMPSON RM	172	171	177	187	190
UNORG. TERRITORIES - SOUTH EAST	123	133	135	146	145
WESTLAKE-GLADSTONE MUN	617	629	632	621	639
WINKLER CITY	1,732	1,771	1,838	1,898	1,976
Non-FN Sub-Total	24,024	24,720	25,541	26,316	27,200
BUFFALO POINT FN	4	4	4	5	4
DAKOTA PLAINS FN	4	4	5	5	5
DAKOTA TIPI FN	5	6	7	10	7
LONG PLAINS FN	38	36	38	40	45
ROSEAU RIVER FN	21	19	20	20	22
SANDY BAY FN	66	66	69	75	83
SWAN LAKE FN	16	16	15	14	15
FN Sub-Total	154	151	158	169	181
R.H.A. Total	24,178	24,871	25,699	26,485	27,381

This page intentionally left blank

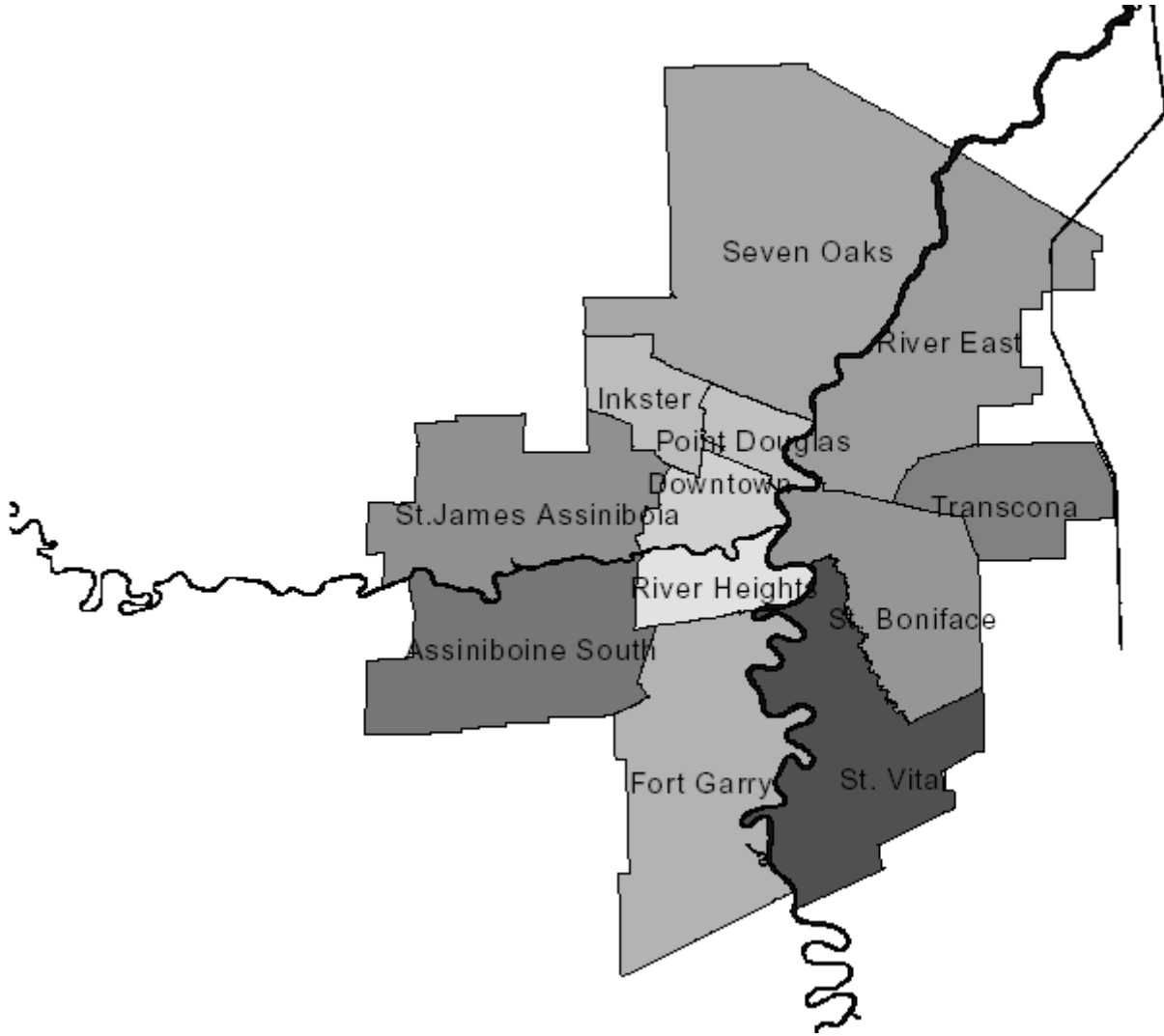
Population of Winnipeg RHA

June 1, 2018

Manitoba RHAs -- Winnipeg



Winnipeg Regional Health Authority Community Areas (CAs)



Manitoba Health, Healthy Living and Seniors Population Report - June 1, 2018

Winnipeg R.H.A.

Municipality	Gender	Under 1	1 - 4	5 - 9	10 - 14	15 - 19	20 - 24	25 - 29	30 - 34	35 - 39	40 - 44	45 - 49	50 - 54	55 - 59	60 - 64	65 - 69	70 - 74	75 +	Total
ASSINIBOINE SOUTH																			
002 - ASSINIBOINE SOUTH																			
	F	127	610	843	915	923	1,019	1,041	1,003	1,034	1,072	1,175	1,226	1,392	1,389	1,302	1,079	2,087	18,237
	M	164	607	912	952	979	1,118	1,131	954	987	995	1,040	1,054	1,251	1,249	1,179	977	1,528	17,077
CA Sub-Total		127	610	843	915	923	1,019	1,041	1,003	1,034	1,072	1,175	1,226	1,392	1,389	1,302	1,079	2,087	18,237
	M	164	607	912	952	979	1,118	1,131	954	987	995	1,040	1,054	1,251	1,249	1,179	977	1,528	17,077

DOWNTOWN

11A - DOWNTOWN WEST																			
	F	239	896	1,156	1,184	1,305	1,327	1,628	1,670	1,628	1,366	1,292	1,267	1,255	1,039	881	653	1,208	19,994
	M	264	908	1,243	1,288	1,345	1,372	1,628	1,678	1,649	1,419	1,351	1,333	1,342	1,002	803	554	655	19,834
11B - DOWNTOWN EAST																			
	F	262	920	1,101	946	1,018	1,535	2,067	1,841	1,448	1,180	1,056	1,006	1,016	880	844	681	1,474	19,275
	M	269	1,016	1,143	978	1,058	1,458	2,025	2,125	1,769	1,447	1,451	1,545	1,436	1,213	945	679	896	21,453
CA Sub-Total	F	501	1,816	2,257	2,130	2,323	2,862	3,695	3,511	3,076	2,546	2,348	2,273	2,271	1,919	1,725	1,334	2,682	39,269
	M	533	1,924	2,386	2,266	2,403	2,830	3,653	3,803	3,418	2,866	2,802	2,878	2,778	2,215	1,748	1,233	1,551	41,287

FORT GARRY

03A - FORT GARRY NORTH																			
	F	120	588	882	982	1,073	1,306	1,265	1,090	1,110	1,201	1,339	1,405	1,440	1,233	1,033	787	2,289	19,143
	M	130	579	876	1,039	1,153	1,369	1,355	1,098	1,039	1,067	1,252	1,342	1,337	1,176	975	702	1,410	17,899
03B - FORT GARRY SOUTH																			
	F	367	1,445	1,744	1,736	1,667	2,184	2,542	2,419	2,284	2,101	1,979	1,767	1,535	1,407	1,188	983	1,539	28,887
	M	381	1,556	1,894	1,768	1,777	2,334	2,602	2,311	2,172	1,967	2,037	1,774	1,493	1,367	1,097	839	1,208	28,577
CA Sub-Total	F	487	2,033	2,626	2,718	2,740	3,490	3,807	3,509	3,394	3,302	3,318	3,172	2,975	2,640	2,221	1,770	3,828	48,030
	M	511	2,135	2,770	2,807	2,930	3,703	3,957	3,409	3,211	3,034	3,289	3,116	2,830	2,543	2,072	1,541	2,618	46,476

Manitoba Health, Healthy Living and Seniors Population Report - June 1, 2018

Winnipeg R.H.A.

Municipality	Gender	Under 1	1 - 4	5 - 9	10 - 14	15 - 19	20 - 24	25 - 29	30 - 34	35 - 39	40 - 44	45 - 49	50 - 54	55 - 59	60 - 64	65 - 69	70 - 74	75 +	Total
INKSTER																			
09A - INKSTER WEST																			
	F	118	447	617	582	598	747	785	819	805	729	591	636	647	623	521	322	405	9,992
	M	117	501	632	664	724	808	870	816	785	704	557	636	646	612	453	314	329	10,168
09B - INKSTER EAST																			
	F	120	460	589	575	605	634	607	619	633	544	600	560	491	391	313	236	435	8,412
	M	122	500	630	650	690	711	623	556	606	554	544	604	560	424	274	191	261	8,500
CA Sub-Total		F	238	907	1,206	1,157	1,203	1,381	1,392	1,438	1,273	1,191	1,196	1,138	1,014	834	558	840	18,404
	M	239	1,001	1,262	1,314	1,414	1,519	1,493	1,372	1,391	1,258	1,101	1,240	1,206	1,036	727	505	590	18,668
POINT DOUGLAS																			
10A - POINT DOUGLAS NORTH																			
	F	197	829	970	975	1,078	1,168	1,155	1,130	1,137	1,152	1,130	1,051	1,015	766	589	430	774	15,546
	M	223	852	1,097	1,013	1,156	1,239	1,191	1,070	1,176	1,118	1,118	1,172	1,134	849	515	370	493	15,786
10B - POINT DOUGLAS SOUTH																			
	F	159	634	810	750	627	624	629	579	532	455	460	500	403	340	241	178	492	8,413
	M	150	647	813	766	640	665	671	596	596	540	580	592	575	460	273	181	234	8,979
CA Sub-Total		F	356	1,463	1,780	1,725	1,792	1,784	1,709	1,669	1,607	1,590	1,551	1,418	1,106	830	608	1,266	23,959
	M	373	1,499	1,910	1,779	1,796	1,904	1,862	1,666	1,772	1,658	1,698	1,764	1,709	1,309	788	551	727	24,765
RIVER EAST																			
07A - RIVER EAST SOUTH																			
	F	149	522	585	483	523	735	855	824	716	650	606	614	587	503	373	258	389	9,372
	M	146	535	644	551	580	651	749	845	844	659	625	657	655	492	381	210	273	9,497
07B - RIVER EAST WEST																			
	F	264	877	1,058	969	998	1,235	1,618	1,621	1,498	1,290	1,211	1,352	1,576	1,539	1,451	1,234	2,871	22,662
	M	253	895	1,094	1,045	1,075	1,185	1,449	1,596	1,460	1,291	1,201	1,312	1,390	1,343	1,121	930	1,666	20,306
07C - RIVER EAST EAST																			
	F	209	709	1,000	890	908	959	1,147	1,174	1,140	1,072	1,025	988	1,128	1,029	838	605	1,341	16,162
	M	202	773	1,002	940	985	1,117	1,097	1,189	1,147	1,038	945	946	1,049	939	775	577	853	15,574
07D - RIVER EAST NORTH																			
	F	32	148	273	300	305	372	257	229	261	326	332	418	477	399	321	242	313	5,005
	M	33	179	293	277	340	370	278	198	223	291	354	376	461	431	340	250	305	4,999
CA Sub-Total		F	654	2,256	2,916	2,642	2,734	3,877	3,848	3,615	3,338	3,174	3,372	3,768	3,470	2,983	2,339	4,914	53,201
	M	634	2,382	3,033	2,813	2,980	3,323	3,573	3,828	3,674	3,279	3,125	3,291	3,555	3,205	2,617	1,967	3,097	50,376

Manitoba Health, Healthy Living and Seniors Population Report - June 1, 2018

Winnipeg R.H.A.

Municipality	Gender	Under 1	1 - 4	5 - 9	10 - 14	15 - 19	20 - 24	25 - 29	30 - 34	35 - 39	40 - 44	45 - 49	50 - 54	55 - 59	60 - 64	65 - 69	70 - 74	75 +	Total
RIVER HEIGHTS																			
12A - RIVER HEIGHTS WEST																			
	F	165	696	887	872	887	1,109	1,438	1,468	1,417	1,311	1,307	1,323	1,353	1,166	1,071	819	1,672	18,961
	M	176	711	878	926	970	1,091	1,314	1,446	1,321	1,235	1,279	1,205	1,244	1,079	868	731	1,049	17,523
12B - RIVER HEIGHTS EAST																			
	F	97	287	361	296	348	741	1,365	1,258	871	654	595	584	690	705	692	533	1,053	11,130
	M	111	335	375	291	342	641	1,231	1,191	937	712	633	622	632	643	568	431	564	10,259
CA Sub-Total		F	262	983	1,248	1,168	1,235	1,850	2,803	2,726	2,288	1,965	1,902	2,043	1,871	1,763	1,352	2,725	30,091
	M	287	1,046	1,253	1,217	1,312	1,732	2,545	2,637	2,258	1,947	1,912	1,827	1,876	1,722	1,436	1,162	1,613	27,782

SEVEN OAKS

08A - SEVEN OAKS WEST																			
	F	184	696	937	889	905	1,056	1,199	1,302	1,219	1,031	967	838	884	857	754	675	1,094	15,487
	M	187	795	1,027	980	1,050	1,237	1,282	1,230	1,183	1,024	942	827	849	766	685	544	707	15,315
08B - SEVEN OAKS EAST																			
	F	243	922	1,164	1,237	1,203	1,335	1,434	1,677	1,736	1,501	1,436	1,487	1,509	1,363	1,194	931	1,788	22,160
	M	257	987	1,271	1,160	1,346	1,519	1,501	1,628	1,612	1,468	1,447	1,438	1,570	1,261	963	724	1,146	21,298
08C - SEVEN OAKS NORTH																			
	F	24	115	159	179	184	165	138	160	186	202	217	214	216	201	147	115	293	2,915
	M	21	129	164	197	182	168	154	159	164	217	214	216	231	203	163	122	151	2,855
CA Sub-Total		F	451	1,733	2,260	2,305	2,292	2,556	2,771	3,139	2,734	2,620	2,539	2,609	2,421	2,095	1,721	3,175	40,562
	M	465	1,911	2,462	2,337	2,578	2,924	2,937	3,017	2,959	2,709	2,603	2,481	2,650	2,230	1,811	1,390	2,004	39,468

ST. BONIFACE

05A - ST. BONIFACE WEST																			
	F	73	339	469	403	353	492	708	698	594	497	482	517	556	545	481	388	1,142	8,737
	M	85	382	466	409	358	477	646	685	563	497	473	503	574	533	464	325	622	8,062
05B - ST. BONIFACE EAST																			
	F	217	1,062	1,455	1,423	1,356	1,490	1,465	1,627	1,775	1,779	1,733	1,630	1,642	1,354	1,186	960	1,359	23,513
	M	279	1,159	1,475	1,478	1,430	1,432	1,376	1,448	1,607	1,753	1,728	1,631	1,601	1,312	1,068	839	1,224	22,840
CA Sub-Total		F	290	1,401	1,924	1,826	1,709	1,982	2,173	2,325	2,276	2,215	2,147	2,198	1,899	1,667	1,348	2,501	32,250
	M	364	1,541	1,941	1,887	1,788	1,909	2,022	2,133	2,170	2,250	2,201	2,134	2,175	1,845	1,532	1,164	1,846	30,902

Manitoba Health, Healthy Living and Seniors Population Report - June 1, 2018

Winnipeg R.H.A.

Municipality	Gender	Under 1	1 - 4	5 - 9	10 - 14	15 - 19	20 - 24	25 - 29	30 - 34	35 - 39	40 - 44	45 - 49	50 - 54	55 - 59	60 - 64	65 - 69	70 - 74	75 +	Total
ST. JAMES - ASSINIBOIA																			
01A - ST. JAMES - ASSINIBOIA WEST																			
F		162	739	915	903	889	1,004	1,128	1,248	1,206	1,051	1,151	1,227	1,317	1,157	1,020	987	2,071	18,175
M		199	755	901	935	917	1,097	1,157	1,137	1,106	962	1,097	1,131	1,215	1,048	839	756	1,460	16,712
01B - ST. JAMES - ASSINIBOIA EAST																			
F		151	588	714	653	583	874	1,133	1,132	991	961	900	934	1,089	930	780	604	1,594	14,611
M		154	620	737	700	685	890	1,088	1,129	1,029	939	902	923	1,053	909	685	453	1,023	13,919
CA Sub-Total																			
F		313	1,327	1,629	1,556	1,472	1,878	2,261	2,380	2,197	2,012	2,051	2,161	2,406	2,087	1,800	1,591	3,665	32,786
M		353	1,375	1,638	1,635	1,602	1,987	2,245	2,266	2,135	1,901	1,999	2,054	2,268	1,957	1,524	1,209	2,483	30,631
ST. VITAL																			
04A - ST. VITAL NORTH																			
F		185	673	733	677	664	868	1,141	1,169	1,007	925	818	852	955	904	881	711	1,455	14,618
M		187	617	748	688	670	858	1,047	1,155	1,040	957	845	906	973	843	678	580	912	13,704
04B - ST. VITAL SOUTH																			
F		192	825	1,219	1,194	1,252	1,295	1,365	1,370	1,505	1,526	1,522	1,534	1,777	1,710	1,490	1,097	2,044	22,917
M		206	896	1,257	1,296	1,282	1,486	1,437	1,400	1,402	1,420	1,392	1,424	1,579	1,470	1,275	969	1,389	21,580
CA Sub-Total																			
F		377	1,498	1,952	1,871	1,916	2,163	2,506	2,539	2,512	2,451	2,340	2,386	2,732	2,614	2,371	1,808	3,499	37,935
M		393	1,513	2,005	1,984	1,952	2,344	2,484	2,555	2,442	2,377	2,237	2,330	2,552	2,313	1,953	1,549	2,301	35,284
TRANSCONA																			
006 - TRANSCONA																			
F		189	933	1,340	1,276	1,240	1,203	1,386	1,462	1,497	1,442	1,282	1,378	1,417	1,166	947	738	1,359	20,255
M		256	992	1,430	1,310	1,262	1,312	1,353	1,465	1,484	1,472	1,341	1,352	1,419	1,183	821	633	956	20,041
CA Sub-Total																			
F		189	933	1,340	1,276	1,240	1,203	1,386	1,462	1,497	1,442	1,282	1,378	1,417	1,166	947	738	1,359	20,255
M		256	992	1,430	1,310	1,262	1,312	1,353	1,465	1,484	1,472	1,341	1,352	1,419	1,183	821	633	956	20,041
RHA Sub-Total																			
F		4,247	16,983	22,007	21,317	21,525	25,515	29,531	29,614	28,270	26,050	25,243	25,339	26,404	23,628	20,549	16,257	32,553	395,032
M		4,574	17,940	23,031	22,335	23,024	26,633	29,288	29,141	27,929	25,781	25,371	25,558	26,313	22,836	18,234	13,892	21,327	383,207
WRHA Total																			
		8,817	34,886	44,983	43,590	44,488	52,082	58,751	58,694	56,131	51,764	50,554	50,829	52,636	46,403	38,746	30,127	53,855	777,336

Manitoba Health, Healthy Living and Seniors Population Report - June 1, 2018

Winnipeg Health Region

Municipality	Gender	Under 1	1 - 4	5 - 9	10 - 14	15 - 19	20 - 24	25 - 29	30 - 34	35 - 39	40 - 44	45 - 49	50 - 54	55 - 59	60 - 64	65 - 69	70 - 74	75 +	Total
CHARLESWOOD/TUXEDO																			
	F	147	760	1,061	1,207	1,232	1,363	1,387	1,294	1,356	1,412	1,582	1,628	1,831	1,850	1,712	1,373	3,007	24,202
	M	184	753	1,139	1,248	1,298	1,482	1,483	1,267	1,296	1,320	1,404	1,425	1,665	1,644	1,550	1,261	2,125	22,544
CHURCHILL TOWN																			
	F	2	23	26	28	33	38	35	25	40	32	37	31	37	32	11	11	12	453
	M	2	14	29	34	28	28	33	36	28	35	23	37	44	29	26	11	13	450
EAST KILDONAN COMM																			
	F	503	1,747	2,308	2,052	2,104	2,406	3,004	3,085	2,928	2,647	2,491	2,617	2,960	2,784	2,459	1,955	4,625	42,675
	M	500	1,846	2,328	2,198	2,292	2,527	2,780	3,069	2,943	2,615	2,430	2,535	2,727	2,484	2,051	1,599	2,743	39,667
EAST ST PAUL RM																			
	F	32	148	273	300	305	370	255	229	261	326	332	417	472	391	317	241	307	4,976
	M	33	179	293	277	340	363	271	195	222	288	352	373	452	429	332	246	299	4,944
FORT GARRY COMMUNITY																			
	F	457	1,832	2,341	2,379	2,377	3,097	3,394	3,151	3,012	2,908	2,867	2,727	2,495	2,153	1,786	1,436	2,716	41,128
	M	477	1,944	2,490	2,451	2,553	3,287	3,544	3,068	2,875	2,679	2,896	2,716	2,386	2,121	1,680	1,232	1,937	40,336
ST BONIFACE COMMUNITY																			
	F	291	1,389	1,868	1,804	1,721	1,988	2,177	2,326	2,366	2,285	2,220	2,168	2,203	1,907	1,673	1,352	2,493	32,231
	M	368	1,537	1,902	1,896	1,803	1,934	2,038	2,133	2,167	2,260	2,208	2,156	2,182	1,858	1,534	1,171	1,850	30,997
ST JAMES ASSINIBOIA - NORTH																			
	F	123	491	667	633	655	832	839	886	869	788	658	682	685	662	544	340	518	10,872
	M	127	548	695	734	795	882	932	882	846	764	617	690	694	643	462	325	374	11,010
ST JAMES ASSINIBOIA - W CENTRL																			
	F	328	1,388	1,734	1,633	1,578	1,950	2,363	2,463	2,305	2,108	2,148	2,253	2,476	2,146	1,847	1,618	3,732	34,070
	M	366	1,451	1,735	1,725	1,700	2,079	2,356	2,339	2,251	2,028	2,097	2,150	2,372	2,021	1,577	1,242	2,520	32,009
ST VITAL COMMUNITY																			
	F	379	1,517	1,975	1,874	1,909	2,168	2,523	2,551	2,540	2,464	2,352	2,376	2,733	2,613	2,370	1,806	3,508	37,658
	M	397	1,529	2,019	1,987	1,951	2,335	2,486	2,564	2,466	2,389	2,242	2,322	2,556	2,306	1,956	1,545	2,301	35,351
TRANSCONA COMMUNITY																			
	F	173	821	1,162	1,150	1,119	1,092	1,241	1,305	1,303	1,254	1,125	1,213	1,264	1,047	843	657	1,027	17,796
	M	224	869	1,267	1,158	1,121	1,171	1,214	1,332	1,286	1,295	1,168	1,193	1,253	1,066	742	578	777	17,714
WEST KILDONAN COMMUNITY																			
	F	416	1,562	2,027	2,044	2,022	2,274	2,559	2,895	2,856	2,416	2,306	2,235	2,303	2,147	1,904	1,572	2,828	36,366
	M	441	1,731	2,210	2,048	2,299	2,664	2,686	2,782	2,690	2,389	2,293	2,175	2,323	1,955	1,613	1,237	1,823	35,359

Manitoba Health, Healthy Living and Seniors Population Report - June 1, 2018

Winnipeg Health Region

Municipality	Gender	Under 1	1 - 4	5 - 9	10 - 14	15 - 19	20 - 24	25 - 29	30 - 34	35 - 39	40 - 44	45 - 49	50 - 54	55 - 59	60 - 64	65 - 69	70 - 74	75 +	Total
WEST ST PAUL RM																			
	F	23	115	156	179	184	163	138	158	189	197	211	214	221	197	145	117	288	2,895
	M	21	129	162	190	180	164	158	161	163	213	214	212	233	203	160	121	145	2,829
WINNIPEG INNER CITY - NORTH																			
	F	528	2,035	2,360	2,253	2,320	2,670	2,732	2,646	2,504	2,394	2,356	2,283	2,135	1,717	1,317	980	1,849	35,079
	M	532	2,055	2,571	2,392	2,484	2,749	2,700	2,545	2,674	2,386	2,399	2,514	2,453	1,881	1,215	832	1,100	35,482
WINNIPEG INNER CITY - SOUTH																			
	F	274	1,034	1,326	1,236	1,303	1,915	2,878	2,801	2,365	2,033	1,959	1,959	2,099	1,906	1,794	1,395	2,841	31,118
	M	302	1,099	1,326	1,291	1,381	1,794	2,614	2,669	2,295	1,991	1,953	1,864	1,918	1,756	1,463	1,191	1,680	28,587
WINNIPEG INNER CITY - W CENTRL																			
	F	571	2,121	2,723	2,545	2,663	3,189	4,006	3,799	3,376	2,786	2,599	2,536	2,490	2,076	1,827	1,404	2,802	43,513
	M	600	2,256	2,865	2,706	2,799	3,174	3,993	4,099	3,727	3,129	3,075	3,196	3,055	2,440	1,873	1,301	1,640	45,928
Non-FN Sub-Total(Sex)																			
	F	4,247	16,983	22,007	21,317	21,525	25,515	29,531	29,614	28,270	26,050	25,243	25,339	26,404	23,628	20,549	16,257	32,553	395,032
	M	4,574	17,940	23,031	22,335	23,024	26,633	29,288	29,141	27,929	25,781	25,371	25,558	26,313	22,836	18,234	13,892	21,327	383,207
RHA Sub-Total (Sex)																			
	F	4,247	16,983	22,007	21,317	21,525	25,515	29,531	29,614	28,270	26,050	25,243	25,339	26,404	23,628	20,549	16,257	32,553	395,032
	M	4,574	17,940	23,031	22,335	23,024	26,633	29,288	29,141	27,929	25,781	25,371	25,558	26,313	22,836	18,234	13,892	21,327	383,207
RHA Total																			
		8,821	34,923	45,038	43,652	44,549	52,148	58,819	58,755	56,199	51,831	50,614	50,897	52,717	46,464	38,783	30,149	53,880	778,239

Winnipeg Health Region

Municipality	2014	2015	2016	2017	2018
CHARLESWOOD/TUXEDO	45,465	45,575	46,008	46,609	46,746
CHURCHILL TOWN	1,000	1,004	983	959	903
EAST KILDONAN COMM	76,757	77,630	78,982	80,763	82,342
EAST ST PAUL RM	9,589	9,563	9,710	9,806	9,920
FORT GARRY COMMUNITY	75,253	78,254	81,569	84,315	81,464
ST BONIFACE COMMUNITY	59,462	60,158	61,304	62,809	63,228
ST JAMES ASSINIBOIA - NORTH	19,573	19,795	20,997	21,777	21,882
ST JAMES ASSINIBOIA - W CENTRL	62,857	63,454	64,306	65,010	66,079
ST VITAL COMMUNITY	70,311	71,183	72,402	73,322	73,009
TRANSCONA COMMUNITY	34,212	34,585	35,258	35,509	35,510
WEST KILDONAN COMMUNITY	67,761	68,849	70,364	71,214	71,725
WEST ST PAUL RM	5,090	5,207	5,460	5,587	5,724
WINNIPEG INNER CITY - NORTH	69,241	69,876	70,264	70,589	70,561
WINNIPEG INNER CITY - SOUTH	58,777	59,123	59,654	60,275	59,705
WINNIPEG INNER CITY - W CENTRL	90,255	90,133	90,282	90,822	89,441
Non-FN Sub-Total	745,603	754,389	767,543	779,366	778,239
R.H.A. Total	745,603	754,389	767,543	779,366	778,239

Winnipeg Health Region**Age Group 65+**

Municipality	2014	2015	2016	2017	2018
CHARLESWOOD/TUXEDO	9,525	9,855	10,171	10,601	11,028
CHURCHILL TOWN	84	87	91	91	84
EAST KILDONAN COMM	13,644	14,012	14,423	14,930	15,432
EAST ST PAUL RM	1,398	1,484	1,568	1,651	1,742
FORT GARRY COMMUNITY	9,430	9,797	10,095	10,443	10,787
ST BONIFACE COMMUNITY	8,786	9,010	9,216	9,661	10,073
ST JAMES ASSINIBOIA - NORTH	1,993	2,169	2,324	2,448	2,563
ST JAMES ASSINIBOIA - W CENTRL	12,052	12,097	12,274	12,377	12,536
ST VITAL COMMUNITY	11,482	11,926	12,477	12,996	13,486
TRANSCONA COMMUNITY	4,056	4,202	4,376	4,526	4,624
WEST KILDONAN COMMUNITY	9,585	10,000	10,306	10,676	10,977
WEST ST PAUL RM	843	858	896	944	976
WINNIPEG INNER CITY - NORTH	6,882	6,920	7,085	7,170	7,293
WINNIPEG INNER CITY - SOUTH	9,506	9,660	9,876	10,135	10,364
WINNIPEG INNER CITY - W CENTRL	10,098	10,229	10,478	10,675	10,847
Non-FN Sub-Total	109,364	112,306	115,656	119,324	122,812
R.H.A. Total	109,364	112,306	115,656	119,324	122,812