



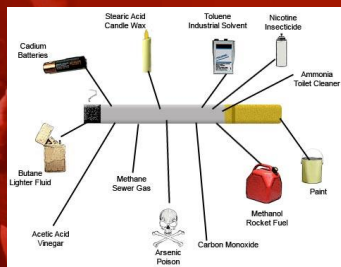
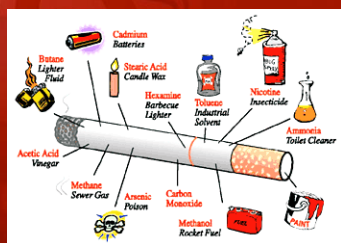
# S.W.A.T

(Students Working against Tobacco)



WEST KILDONAN COLLEGIATE

## What is in a Cigarette?



### DANGER POISON !

**Acetone** (solvent)

**\*Naphthylamine**

**Methanol** (used as rocket fuel)

**Naphtalène** (moth-repellent)

**Nicotine** (used as a herbicide and insecticide)

**\*Cadmium** (used in batteries)

**Carbon monoxide** (found in exhaust fumes)

**Vinyl chloride** (used in plastic materials)

**Cyanhydric acid** (was used in the gas chambers)

**Ammoniac** (detergent)

**\*Urethane**

**Toluene** (industrial solvent)

**Arsenic** (lethal poison)

**\*Dibenzacridine**

**\*Polonium 210** (a radioactive element)

**DDT** (insecticide)

\*Known carcinogenic substances

**STOP SMOKING!**

# THE TAR JAR



There are over **4000** chemicals in **1** cigarette, here are only a few:

# Ammonium: Windex



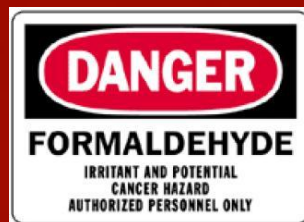
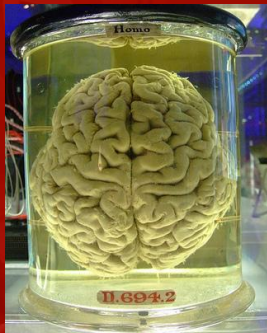
## Hydrogen Cyanide (HCN): Rat Poison



## Dimethylnitrosamine



## Formaldehyde: Specimen Preservative



## ARSENIC: RAID/ANT KILLER



## Vinyl Chloride: PVC pipe used in toilets



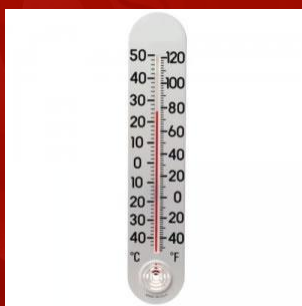
## Acetone: Nail polish Remover



# Benzopyrene: Preparation H



# Mercury: Mercury Poisoning



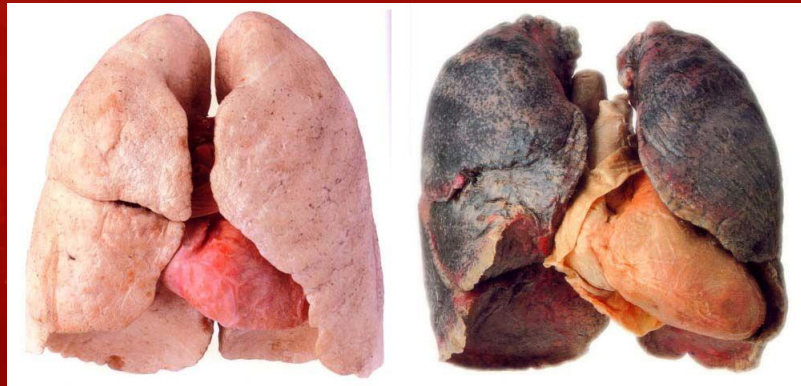
# Lead: Lead Poisoning



# Tar



## What Smoking does to our lungs

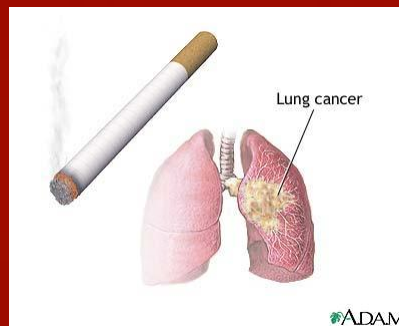
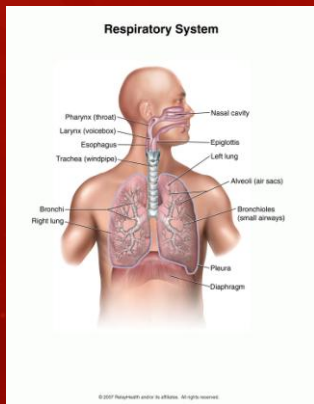


## Pig Lungs





# Emphysema: Exercise



# Throat Cancer

Mr. Richard



## Some warning labels on Cigarettes



## Risks of Smoking

## Smokeless Tobacco

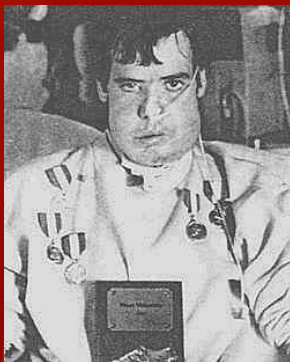


## Who uses chew?

- 20% of high school boys chew
- 2% of high school girls chew
- Male athletes are 1.5 times more likely to chew than non-athletic males



## Sean Marsee



- Talihiina High School's most outstanding athlete, Sean Marsee had won 28 track medals in the 400 meter relay while running the anchor leg. His classmates honoured him with a walnut plaque. After a ten month battle with rapidly spreading cancer that started on his tongue, Sean Marsee died when he was just 19.

## What's in chew tobacco?

- Polonium 210 (nuclear waste)
- Tobacco-specific N-nitrosamines or TSNAs (cancer-causing agents only found in tobacco)
- Formaldehyde (embalming fluid)
- Nicotine
- Cadmium (used in car batteries)
- Cyanide
- Arsenic
- Benzene
- Lead



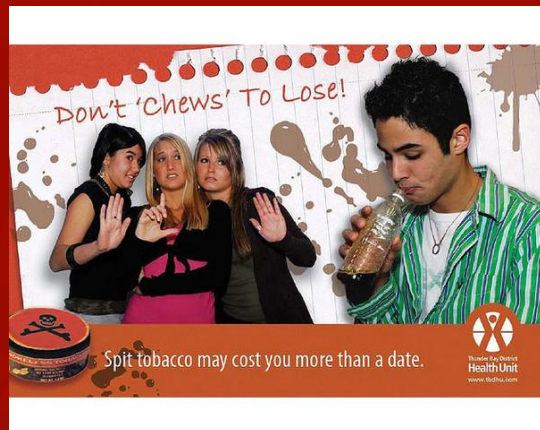
- A person who uses eight to 10 dips or chews a day receives the same amount of nicotine as a heavy smoker who smokes 30 to 40 cigarettes a day.

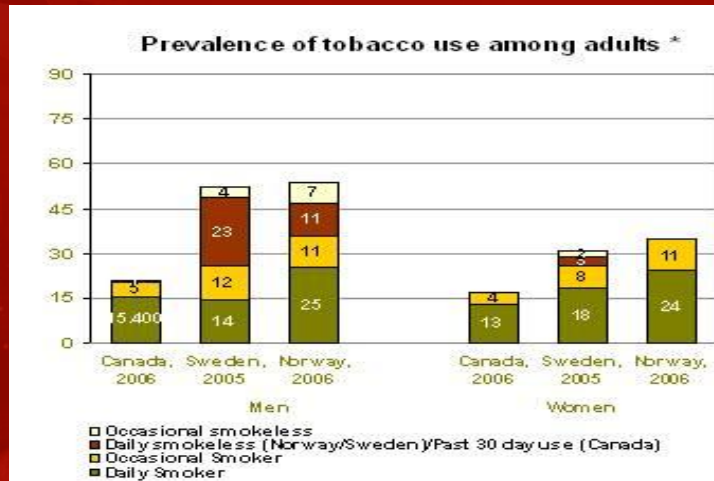


- Cancers that can develop from chewing tobacco are several oral cancers such as:
- Lip
- Tongue
- Cheek
- Gums
- Floor and roof of the mouth



- An estimated 7.6 Americans ages 12 and older have used chew tobacco in the last year





## Names of Chew Tobacco

- Smokeless tobacco
- Spit tobacco
- Snus
- Chew
- Snuff
- Pinch
- Plug
- Dip



## Smokeless Tobacco Brands

- Skoal
- Copenhagen
- Camel



## Long term effects

- Tiredness
- Muscle weakness
- Dizziness
- Depression
- Throat cancer
- Gum disease





## Hairy Tongue

- Hairy tongue is a result of chewing tobacco



© 1997 Mayo Foundation for Medical Education and Research. All rights reserved.



Medscape® www.medscape.com



**MAKE AN IMPRESSION!**

JUST PUT A PINCH BETWEEN YOUR CHEEK AND GUM

TABACO SIN FUMAR

CORTE LARGO  
**SKOAL**  
TABACO PARA SABOREAR DONDE QUIERAS  
Cereza

Detailed description: This advertisement features a man in a black t-shirt and blue jeans standing in the bed of a red pickup truck. He is being pinched on the cheek by two women, one in a pink top and one in a white top, both wearing jeans. The background is a bright yellow-green gradient. The text 'MAKE AN IMPRESSION!' is at the top. To the right, it says 'JUST PUT A PINCH BETWEEN YOUR CHEEK AND GUM'. Below the man, it says 'TABACO SIN FUMAR'. In the bottom right corner, there is a circular graphic for 'SKOAL' 'CORTE LARGO' 'Cereza' (cherry) flavor, with the tagline 'TABACO PARA SABOREAR DONDE QUIERAS'.

Catch the next big juicy flavor.

**NEW!** SKOAL LONG CUT NEW! SKOAL A PINCH BETTER PEACH BLEND SMOKELESS TOBACCO PEACH BLEND

Bold juicy flavor that lasts a long time. Go ahead, take a dip.

WARNING: THIS PRODUCT MAY CAUSE MOUTH CANCER

Always A PINCH BETTER.

Detailed description: This advertisement shows a man in sunglasses and a grey shirt fishing on a boat. He is holding a large fish. The background is a blue sky and ocean. The text 'Catch the next big juicy flavor.' is in the center. Below it, there is a circular graphic for 'SKOAL' 'LONG CUT' 'NEW!' 'SKOAL' 'A PINCH BETTER' 'PEACH BLEND' 'SMOKELESS TOBACCO' 'PEACH BLEND'. At the bottom, it says 'NEW!' and 'Always A PINCH BETTER.'. A warning box is circled in red, containing the text 'WARNING: THIS PRODUCT MAY CAUSE MOUTH CANCER'. The bottom right corner has the text 'Always A PINCH BETTER.' and '©Trademark of U.S. Smokeless Tobacco Co. or its affiliate. ©2010 U.S. Smokeless Tobacco Co.'.

**INTRODUCING NEW BANDITS<sup>®</sup>**  
SMOKELER TOBACCO  
**THEY'LL CHANGE THE WAY YOU LOOK AT TOBACCO.**  
Refreshing, moist, flavorful tobacco satisfaction in a discreet pouch.



**NEW**  
**SKOAL**  
**BANDITS**  
WINTERGREEN  
20 FLAVORFLOW POUCHES

**BIT SIZE**  
MAY VARY

Get a closer look at [SkoalBandits.com](http://SkoalBandits.com)  
Look for them in Wintergreen and Mint.

**WARNING**  
THIS PRODUCT MAY CAUSE MOUTH CANCER

© 2011 Skoal Tobacco Company. Skoal and Bandits are registered trademarks of U.S. Smokeless Tobacco Co. or an affiliate. ©2011 U.S. Smokeless Tobacco Co.

