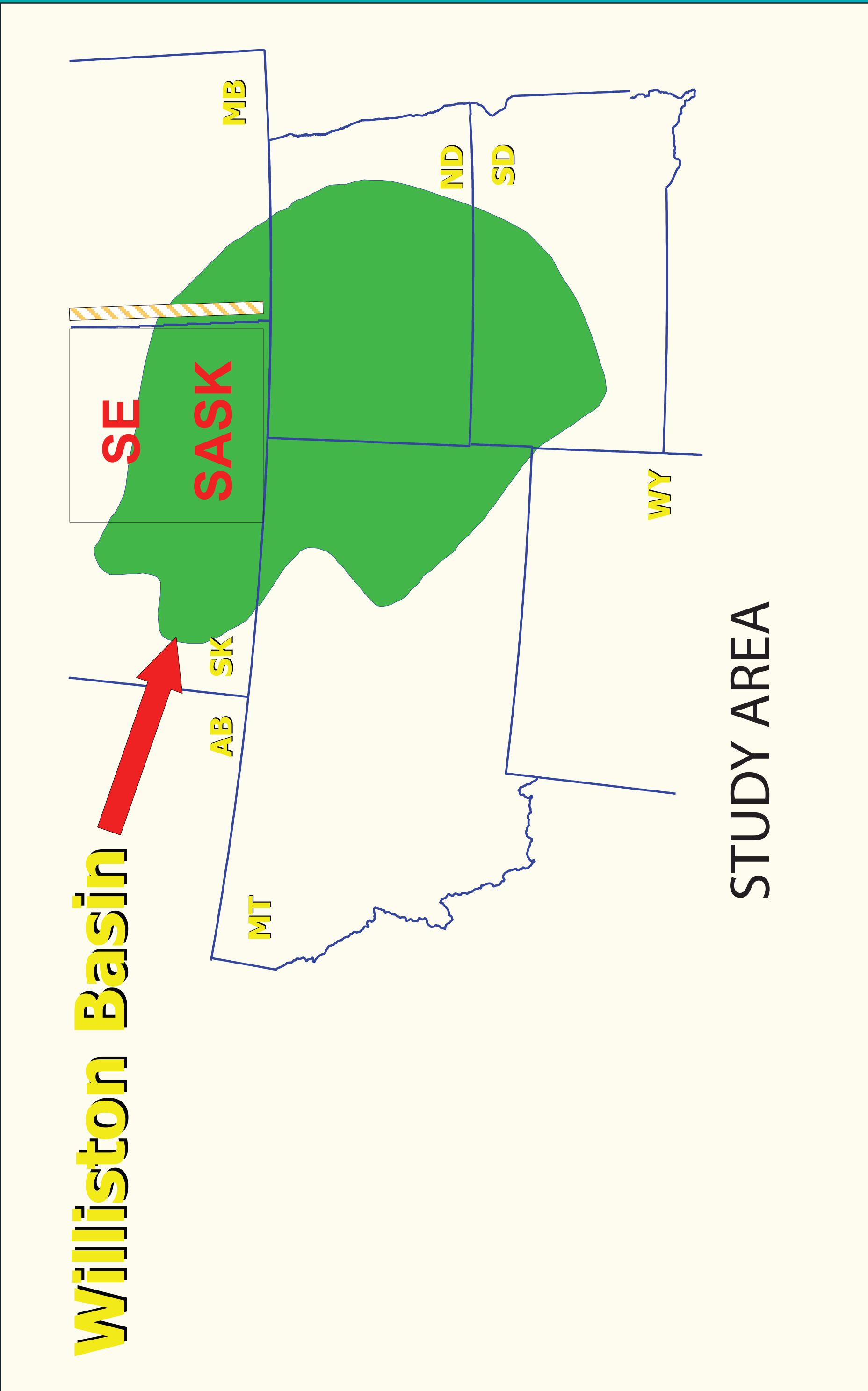
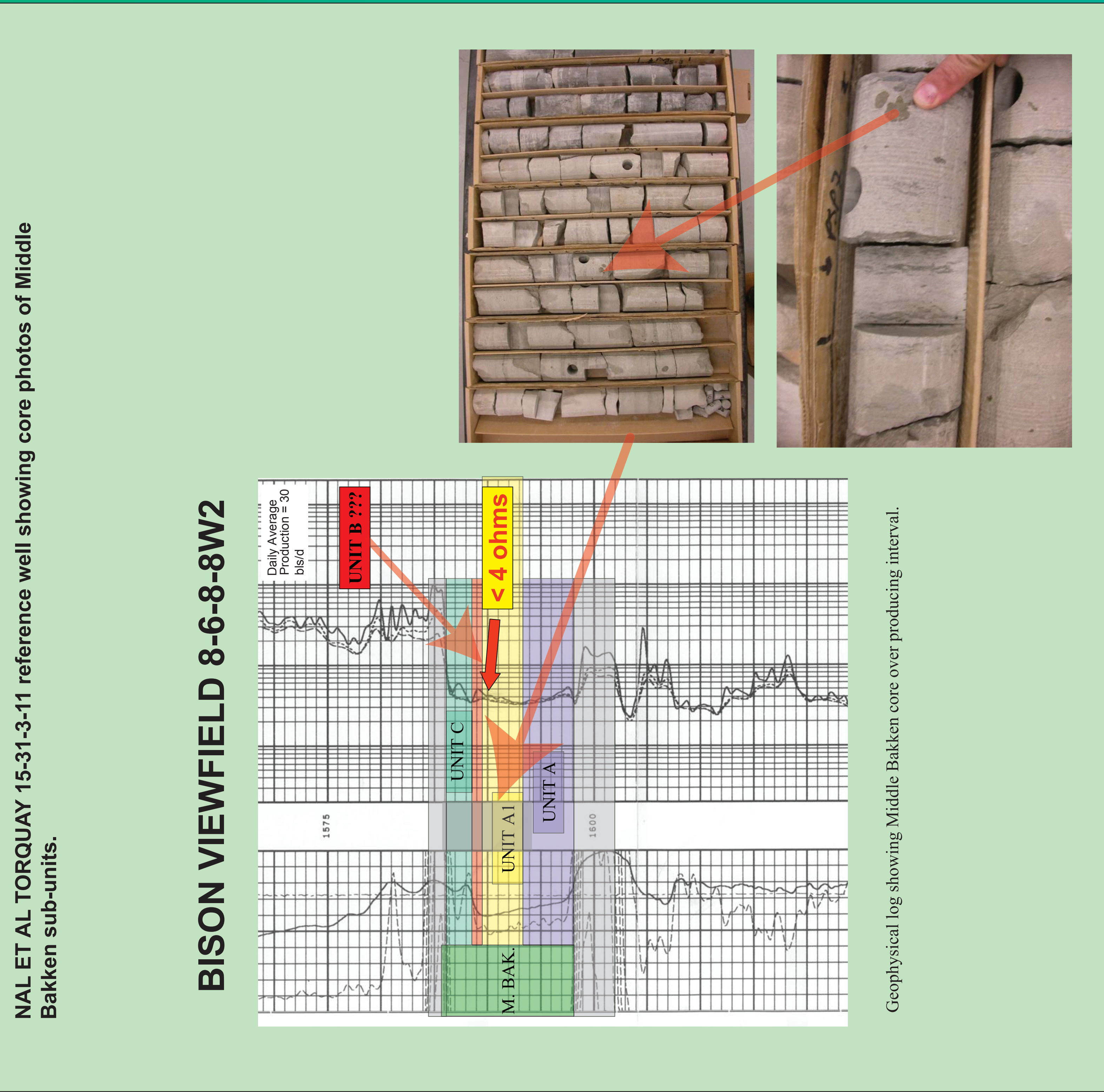
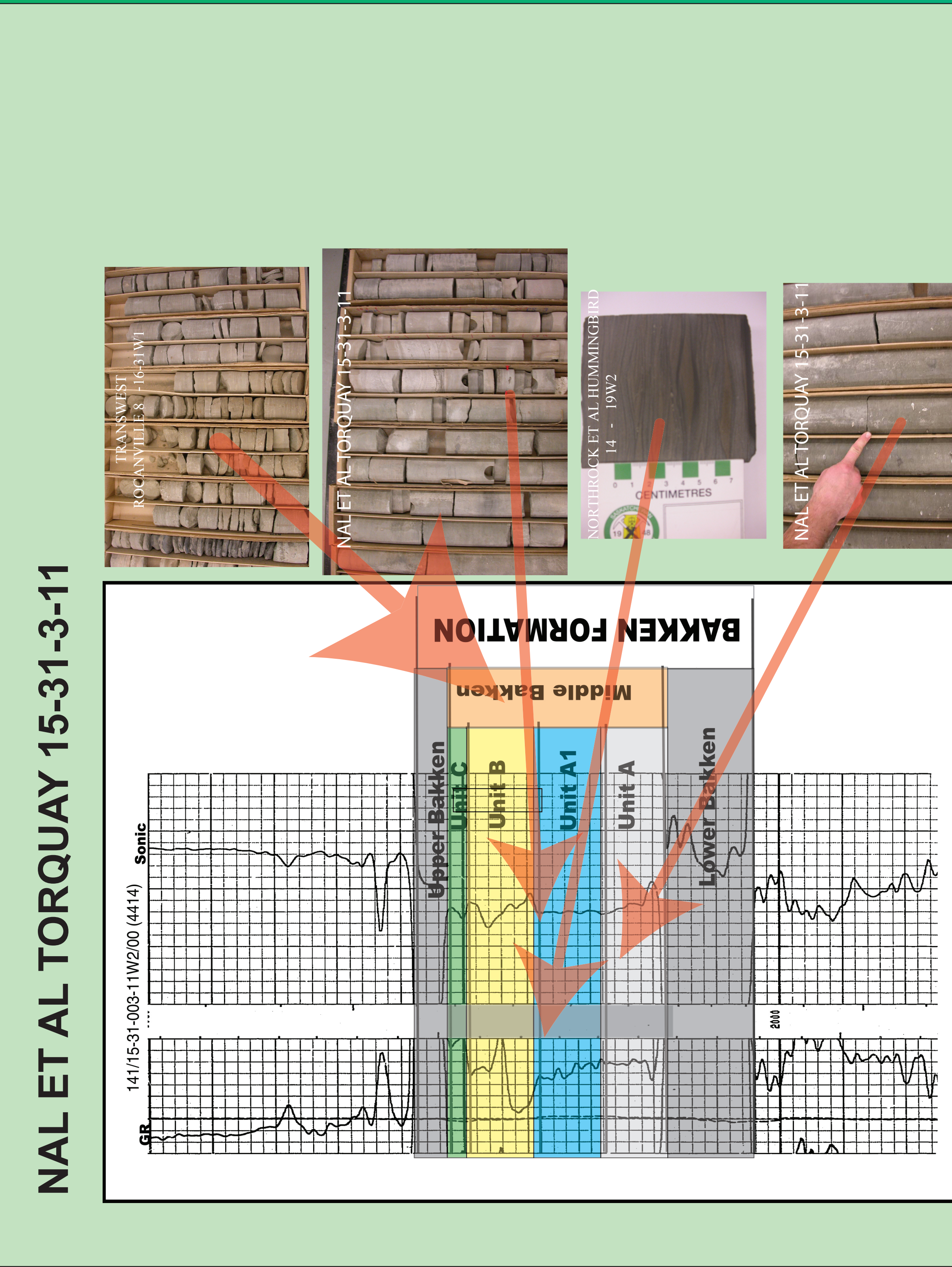
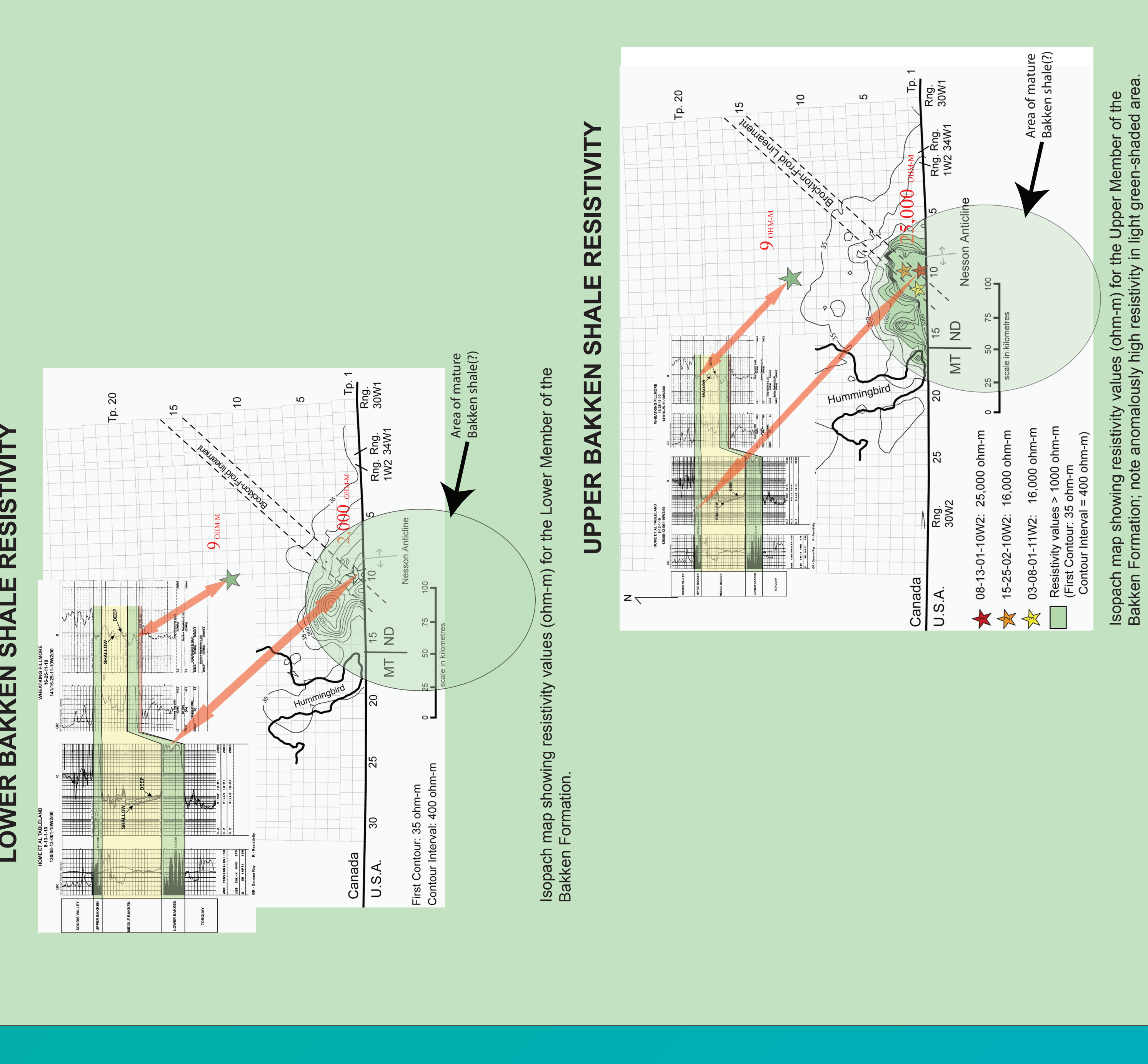
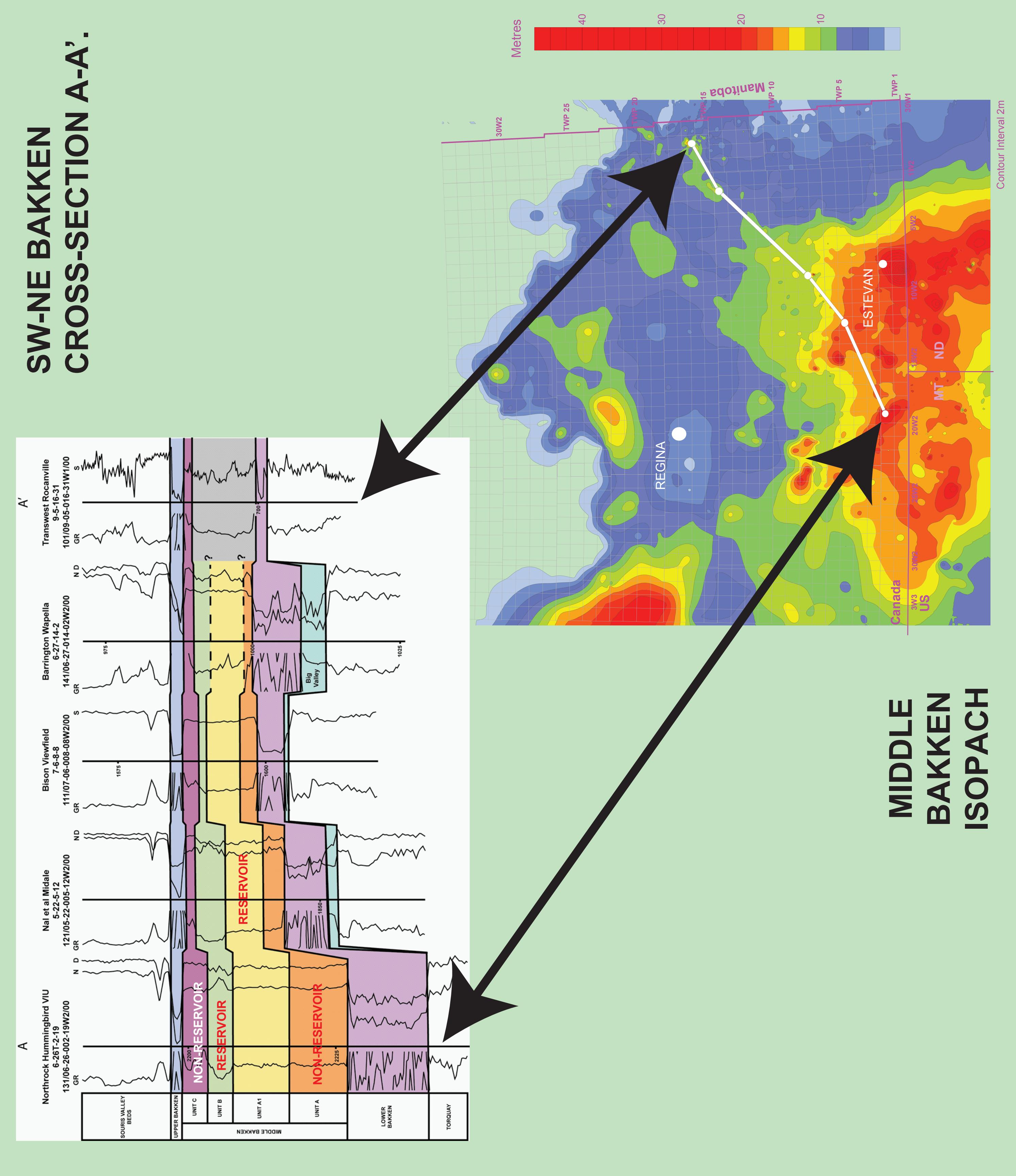
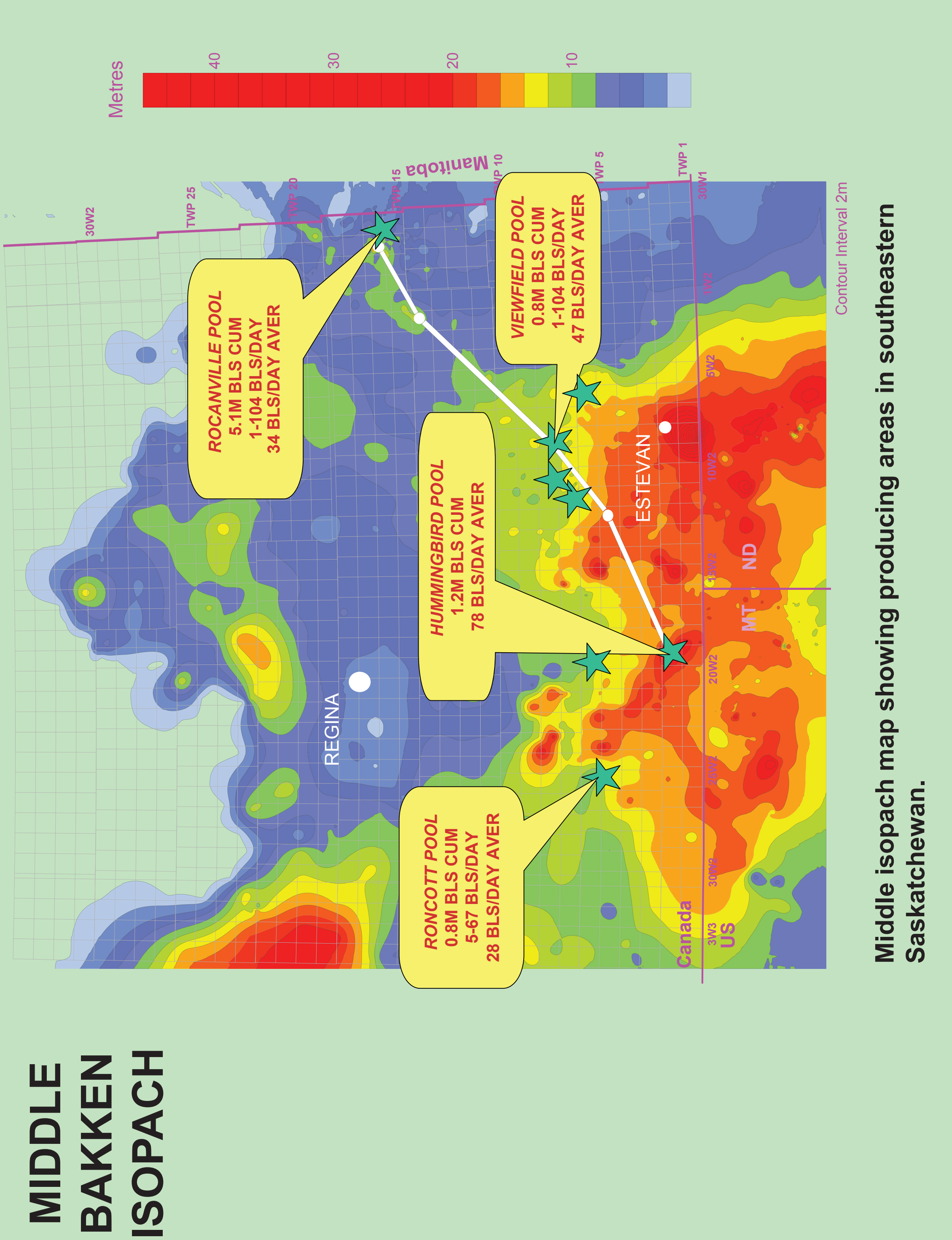
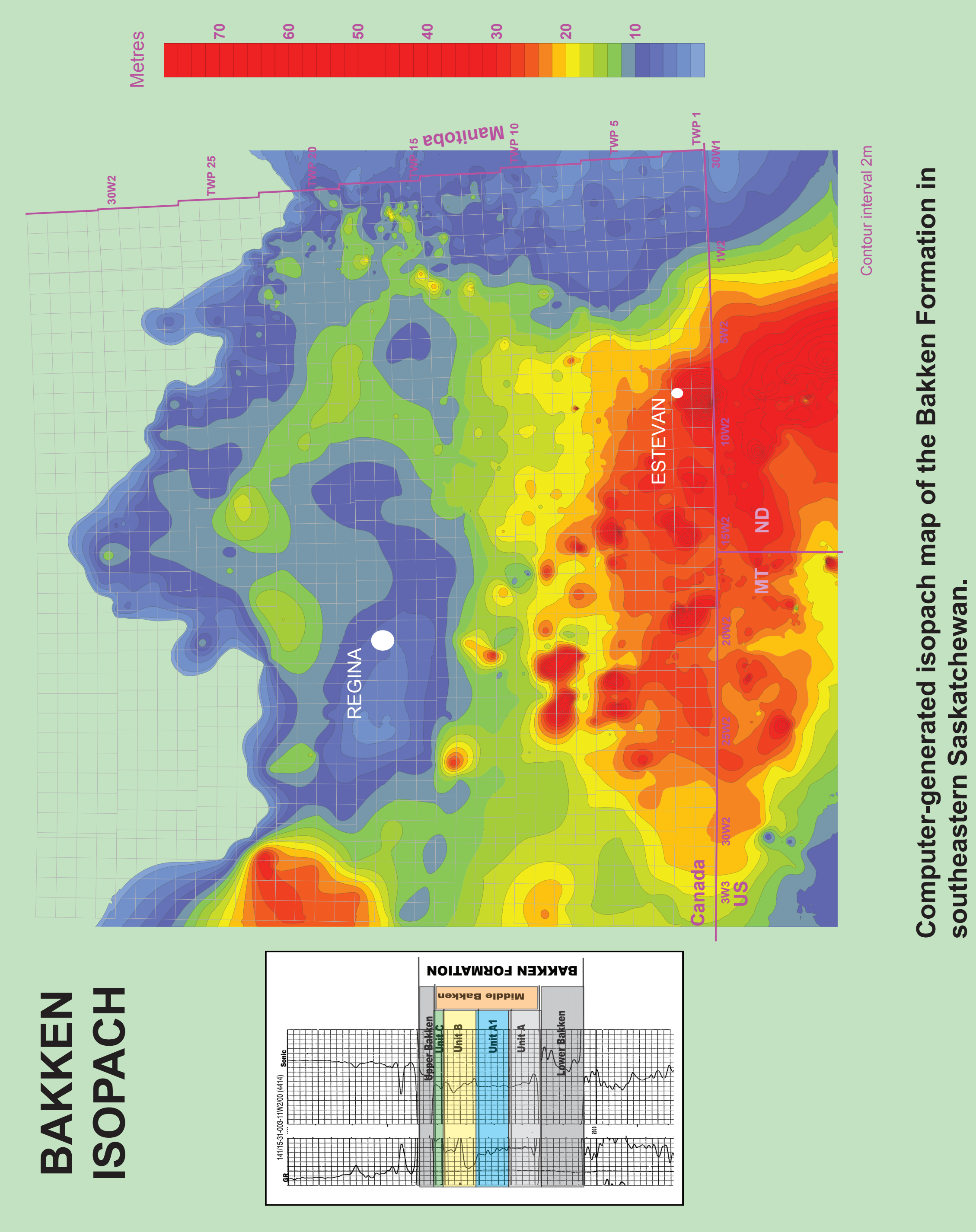


# Hydrocarbon Potential of the Bakken Formation, Southeastern Saskatchewan

L.K. Kreis(1), A. L. Costa(1), K. Osadetz(2)  
 1-Saskatchewan Industry and Resources  
 2- Geological Survey of Canada



Upper Devonian to Lower Mississippian Bakken Formation shales in the Williston Basin are rich source rocks that are believed to have generated and expelled at least 16 billion m<sup>3</sup> (100 billion barrels) of light oil (~40o API), but only a small fraction of this Bakken-sourced oil has been identified in, or produced from, Williston Basin reservoirs. Over the past few years, multi-lateral horizontal well completions and large sand-fracture completions in low-permeability reservoirs have resulted in significant new Bakken production in the Williston Basin. Careful examination of cores, geophysical logs and production data indicates a high potential for further development through horizontal completions in low-permeability by-passed pay that typically shows low resistivity and in undiscovered reservoir sandstones of the Middle Member of the Bakken Formation in southeastern Saskatchewan.



**Saskatchewan and Manitoba Production**

Well	Year	Production (m <sup>3</sup> )	Production (barrels)
1	2008	1000000	6300000
1	2009	1200000	7500000
1	2010	1500000	9400000
1	2011	1800000	11300000
1	2012	2200000	13800000
1	2013	2800000	17500000
1	2014	3500000	21900000
1	2015	4500000	28100000
1	2016	6000000	37700000
1	2017	8000000	50300000
1	2018	10000000	63000000
1	2019	12000000	75000000
1	2020	15000000	94000000
1	2021	18000000	113000000
1	2022	22000000	138000000
1	2023	28000000	175000000
1	2024	35000000	219000000
1	2025	45000000	281000000
1	2026	60000000	377000000
1	2027	80000000	503000000
1	2028	100000000	630000000
1	2029	120000000	750000000
1	2030	150000000	940000000
1	2031	180000000	1130000000
1	2032	220000000	1380000000
1	2033	280000000	1750000000
1	2034	350000000	2190000000
1	2035	450000000	2810000000
1	2036	600000000	3770000000
1	2037	800000000	5030000000
1	2038	1000000000	6300000000
1	2039	1200000000	7500000000
1	2040	1500000000	9400000000
1	2041	1800000000	11300000000
1	2042	2200000000	13800000000
1	2043	2800000000	17500000000
1	2044	3500000000	21900000000
1	2045	4500000000	28100000000
1	2046	6000000000	37700000000
1	2047	8000000000	50300000000
1	2048	10000000000	63000000000
1	2049	12000000000	75000000000
1	2050	15000000000	94000000000
1	2051	18000000000	113000000000
1	2052	22000000000	138000000000
1	2053	28000000000	175000000000
1	2054	35000000000	219000000000
1	2055	45000000000	281000000000
1	2056	60000000000	377000000000
1	2057	80000000000	503000000000
1	2058	100000000000	630000000000
1	2059	120000000000	750000000000
1	2060	150000000000	940000000000
1	2061	180000000000	1130000000000
1	2062	220000000000	1380000000000
1	2063	280000000000	1750000000000
1	2064	350000000000	2190000000000
1	2065	450000000000	2810000000000
1	2066	600000000000	3770000000000
1	2067	800000000000	5030000000000
1	2068	1000000000000	6300000000000
1	2069	1200000000000	7500000000000
1	2070	1500000000000	9400000000000
1	2071	1800000000000	11300000000000
1	2072	2200000000000	13800000000000
1	2073	2800000000000	17500000000000
1	2074	3500000000000	21900000000000
1	2075	4500000000000	28100000000000
1	2076	6000000000000	37700000000000
1	2077	8000000000000	50300000000000
1	2078	10000000000000	63000000000000
1	2079	12000000000000	75000000000000
1	2080	15000000000000	94000000000000
1	2081	18000000000000	113000000000000
1	2082	22000000000000	138000000000000
1	2083	28000000000000	175000000000000
1	2084	35000000000000	219000000000000
1	2085	45000000000000	281000000000000
1	2086	60000000000000	377000000000000
1	2087	80000000000000	503000000000000
1	2088	100000000000000	630000000000000
1	2089	120000000000000	750000000000000
1	2090	150000000000000	940000000000000
1	2091	180000000000000	1130000000000000
1	2092	220000000000000	1380000000000000
1	2093	280000000000000	1750000000000000
1	2094	350000000000000	2190000000000000
1	2095	450000000000000	2810000000000000
1	2096	600000000000000	3770000000000000
1	2097	800000000000000	5030000000000000
1	2098	1000000000000000	6300000000000000
1	2099	1200000000000000	7500000000000000
1	2100	1500000000000000	9400000000000000

