

- LEGEND
- 8 FELDSPAR—QUARTZ PORPHYRY, SILLS, DYKES
- a) coarse grained
- b) fine grained
- 7 RUBY LAKE GABBRO/DIORITE, SILLS, DYKES
- 6 GABBROIC COMPLEX
- a) gabbro, medium grained
- b) gabbro, medium grained, with fine grained diorite dykes
- c) gabbro, medium grained, with aphanitic intermediate dykes
- d) gabbro, fine grained
- e) gabbro, aphanitic
- f) igneous breccia: medium grained gabbroic clasts in a fine grained dioritic matrix
- g) altered gabbro, non- to weakly schistose, pale green, chloritic
- h) altered gabbro, non- to weakly schistose, chlorite - carbonate
- i) altered gabbro, schistose, chlorite - carbonate - quartz  $\pm$  fuchsite  $\pm$  tourmaline  $\pm$  sericite

- 5 'KNOTTED' GABBRO
- a) hornblende-plagioclase poikiloblastic
- b) microphyric

- 4 CHLORITIZED MAFIC ROCKS
- a) mafic volcanic rock (tuffaceous?)
- b) schistose

- 3 FELSIC TO INTERMEDIATE VOLCANICLASTIC ROCKS
- a) felsic tuffaceous rock
- b) intermediate tuffaceous rock
- c) intermediate volcaniclastic rock

- 2 MAFIC VOLCANICLASTIC AND SEDIMENTARY ROCKS
- a) mafic volcanic - derived wacke
- b) mafic siltstone

- 1 BASALTIC ANDESITE
- a) aphyric flow
- b) pyroxene - phyrlic flow
- c) fragmental

To accompany Economic Geology Report ER87-1

Geology by S. Peloquin, B. Tannahill, and G. Gale, 1985-86

NTS 63K/13SE

- SYMBOLS
- Outcrop
- Area of shallow overburden
- Lithological contact, known, assumed
- Limit of geological mapping at 1:1200 scale
- ~~~~ Fault, known
- ~~~~ approximate
- ~~~~ Zone of chloritization and shearing, known
- ~~~~ approximate
- ~~~~ Zone of alteration, 6g
- ~~~~ 6h - 6i
- ⊕ Antiform, assumed axial trace
- /// Bedding, inclined, vertical, dip unknown
- /// Schistosity, inclined, vertical, dip unknown
- /// Cleavage, regional, inclined, vertical, dip unknown
- /// Cleavage, axial, (kink folds), inclined, vertical
- Layering
- ⊕ Deformed pillows
- ⊕ Pillowed flow, tops unknown
- Gold occurrence
- Decline, Tartan Lake gold deposit
- Surface projection of the Main Zone, Tartan Lake gold deposit
- Diamond drill hole
- Trench
- ⌘ Swamp
- Road, all weather
- Drill road
- Bridge
- The grid that was used for reference in this mapping was cut in 1985 by Granges Exploration Ltd.

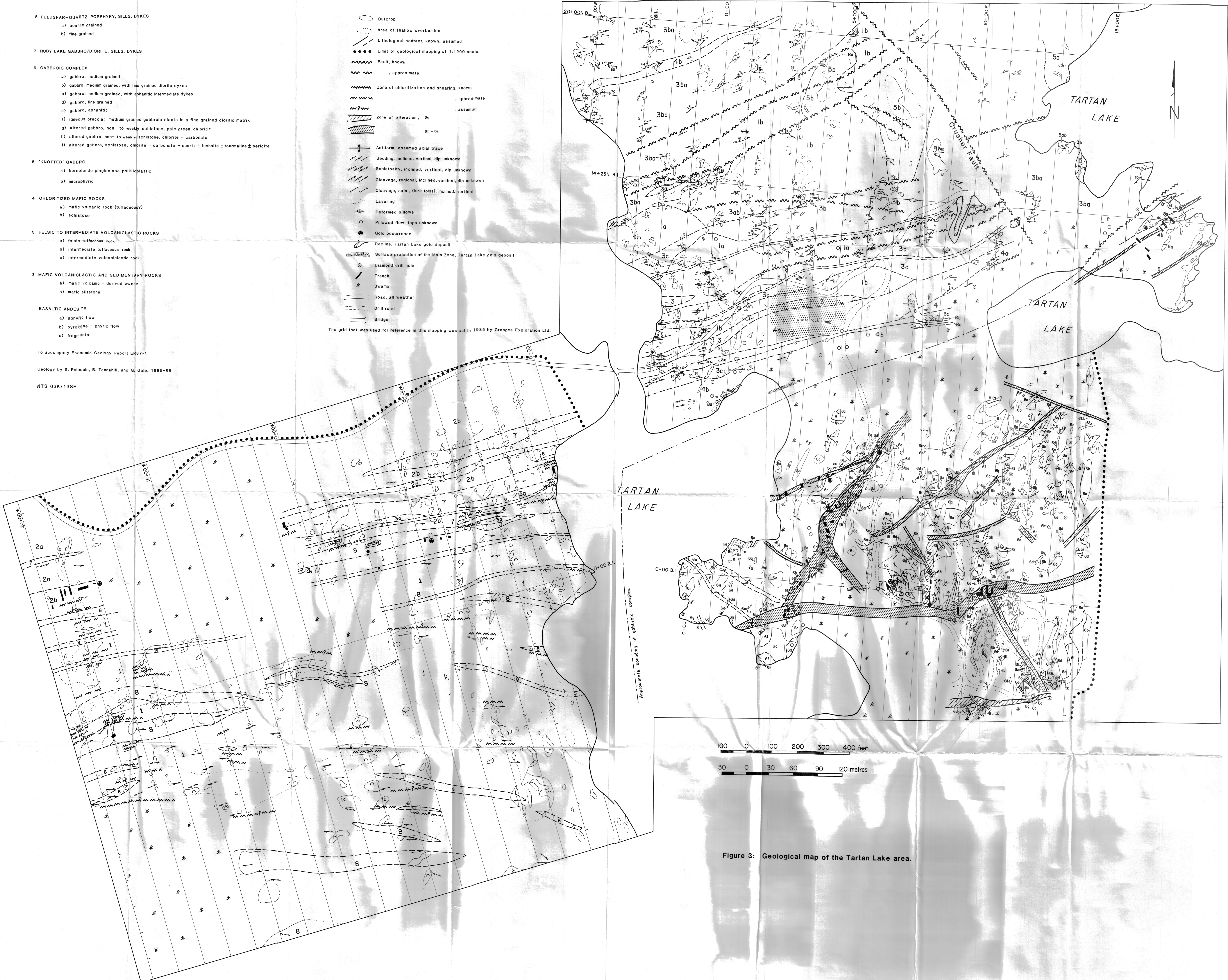


Figure 3: Geological map of the Tartan Lake area.