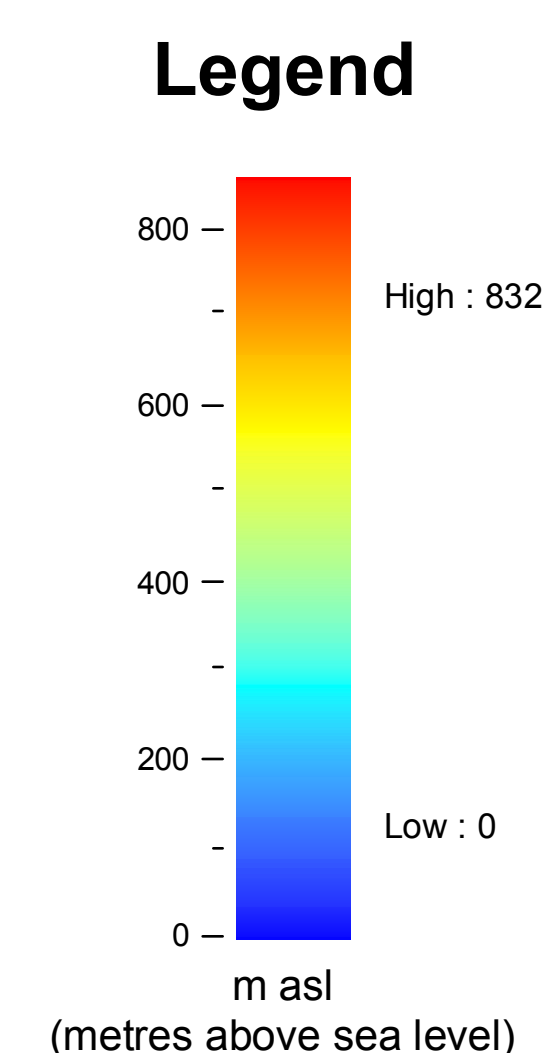
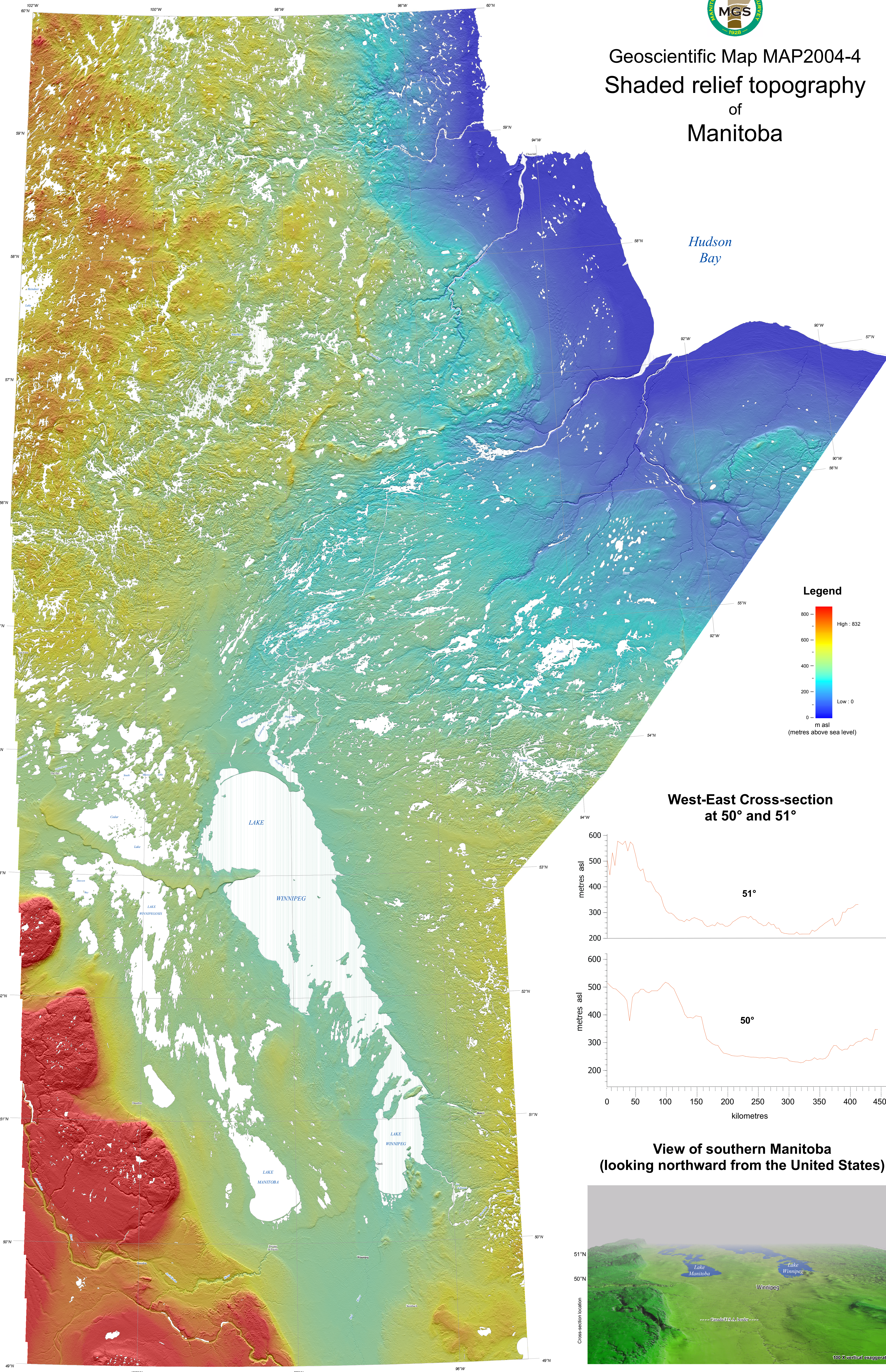
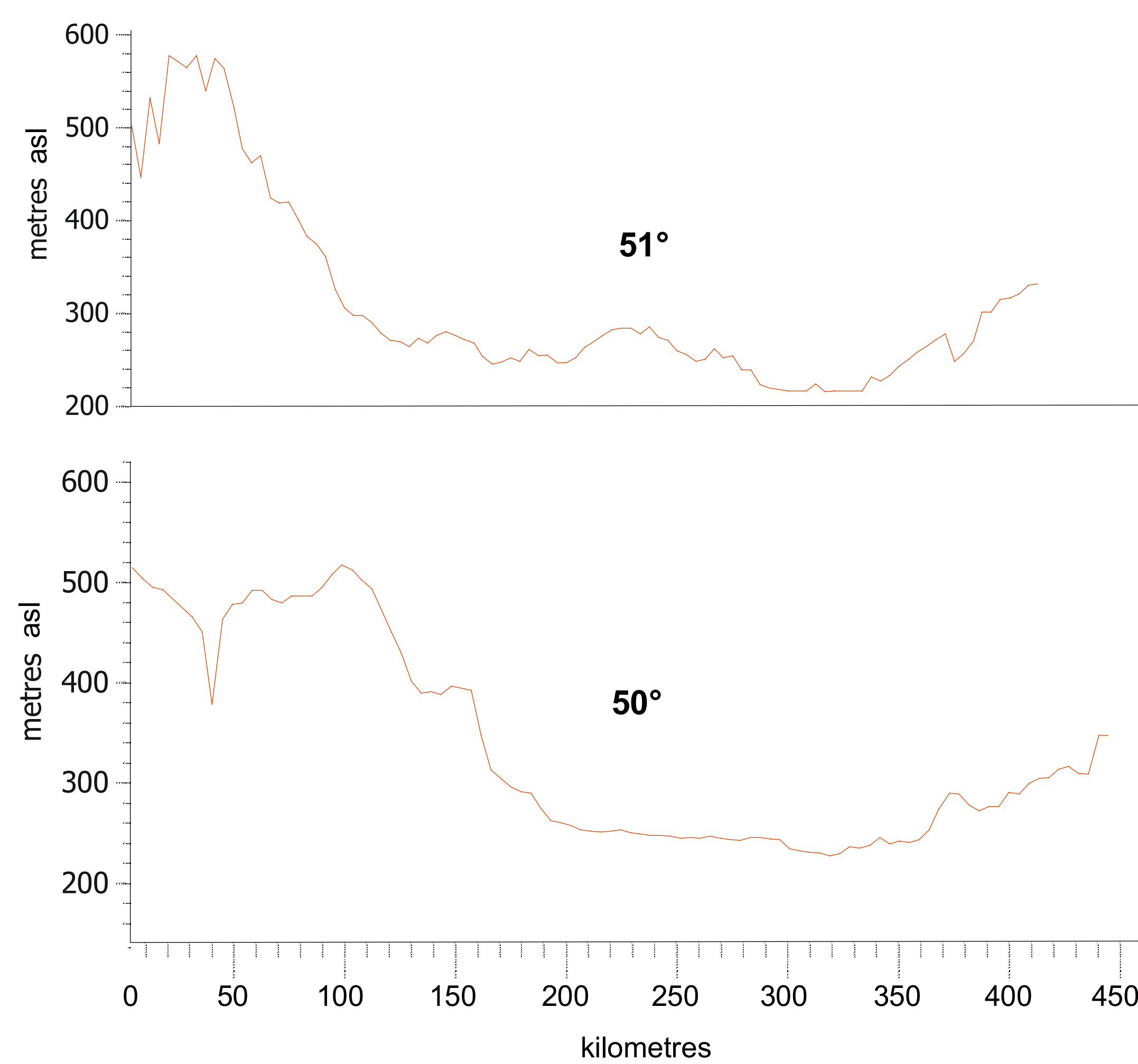




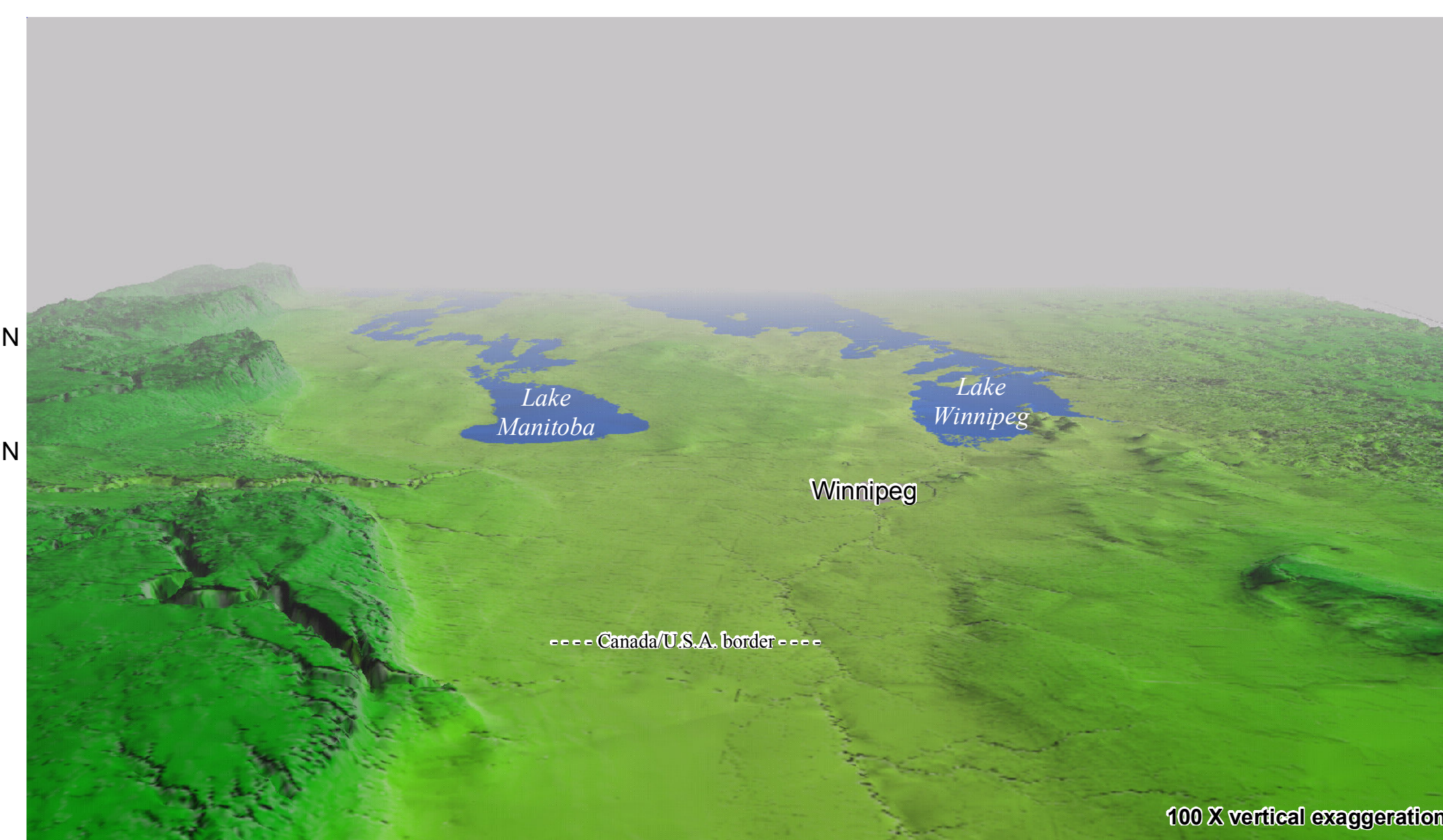
Geoscientific Map MAP2004-4 Shaded relief topography of Manitoba



West-East Cross-section at 50° and 51°



View of southern Manitoba (looking northward from the United States)

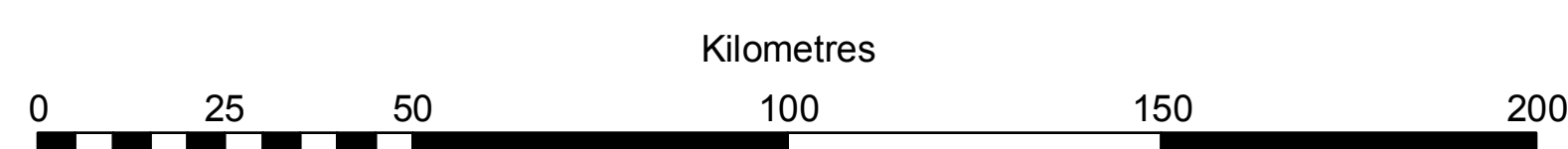


Universal Transverse Mercator
North American Datum 1983
Zone 14
50 Metres Cell

Copies of this map can be obtained from:
Manitoba Industry, Economic Development and Mines
Manitoba Geological Survey, Publication Sales
360-1395 Ellice Ave
Winnipeg, Manitoba
R5C 3P2
Canada

Phone: (204) 945-4154
Toll-free: 1-800-223-5215
E-mail: minesinfo@gov.mb.ca

Available for free download at: www.gov.mb.ca/min/mind



Further information about the SRTM can be obtained from NASA
at <http://www.nasa.com>

Compiled by:
G.L.D. Mallett and G.R. Keller

Published by:
Manitoba Industry, Economic Development and Mines
Manitoba Geological Survey, 2004.

Suggested reference:
Mallett, G.L.D. and Keller, G.R. 2004. Shaded relief topography of Manitoba. Manitoba Industry, Economic Development and Mines, Manitoba Geological Survey, Geoscientific Map MAP2004-4, Scale 1:1 000 000

Data derived from the Shuttle Radar Topography Mission (SRTM) was obtained from:
United States Geological Survey 2002. Shuttle radar topography mission. Digital elevation model. Manitoba. United States Geological Survey.
URL: <http://edc.srs.gov/pub/data/srtm/>, portions of files N48W88W.hgt.zip through N60W102W.hgt.zip, 1.5 Mb (variable), 90 m cell, zipped hgt format [Mar 2003].