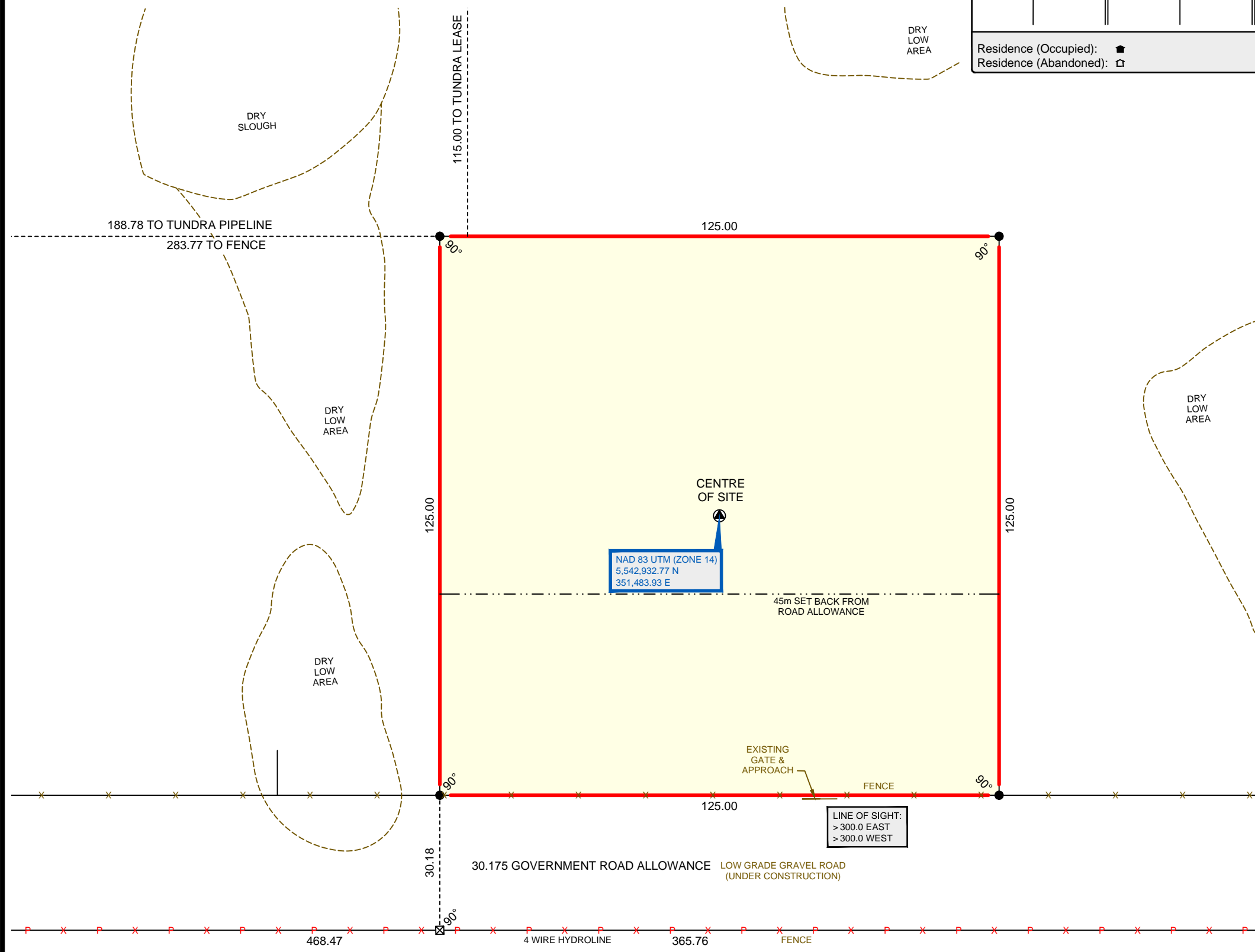


**PROXIMITY NOTE**  
FROM PROPOSED BATTERY SITE:  
• 1.36km TO RESIDENCE 8-15-12-27 WPM.  
• 12.5km NE OF ELKHORN

**NOTE:** Positions of buried facilities shown are derived from interpretations of signals from electronic devices. Reception of electronic signals is subject to interference and has limitations, therefore it should not be assumed that all buried facilities are shown, and facilities which are shown should not be construed as "located" until physically exposed. All underground installations should be marked by the respective authorities prior to excavation or construction.



**SITE PLAN**  
SCALE - 1:1000

- LEGEND:**
- Survey Monument found: ○
  - Iron Spike planted: ●
  - Temporary Point: □
  - Area referred to: [Color Swatches]
  - New Area: [Color Swatch]
  - Existing Area: [Color Swatch]
  - Temporary Work Space: [Color Swatch]
  - Overhead Power Line: [Symbol]
  - Buried Cable: [Symbol]
  - Buried Electrical Cable: [Symbol]
  - Buried Phone Cable: [Symbol]
  - Buried Fibre Optics Cable: [Symbol]
  - Buried Pipe: [Symbol]
  - Buried Water Line: [Symbol]
  - Low Pressure Gas Utility: [Symbol]
  - Above Ground Pipe: [Symbol]
  - Fence Line: [Symbol]
  - Tree / Bush Line: [Symbol]
  - Field Line / Vegetation Change: [Symbol]
  - River / Creek: [Symbol]
  - Drainage: [Symbol]
  - Power Pole: [Symbol]
  - Guy Wire: [Symbol]
  - Electrical Panel: [Symbol]
  - Phone Pedestal: [Symbol]
  - Riser: [Symbol]
  - Block Valve: [Symbol]
  - Water Well: [Symbol]
  - Seismic Shot Point: [Symbol]
  - Topographic Tie: [Symbol]
  - Proposed Well Centre: [Symbol]
  - Location/Standing Well: [Symbol]
  - Gas Well: [Symbol]
  - Oil Well: [Symbol]
  - Injection Well: [Symbol]
  - Water Source Well: [Symbol]
  - Abandoned Well: [Symbol]
  - Suspended Well: [Symbol]
  - Abandoned Gas Well: [Symbol]
  - Suspended Gas Well: [Symbol]
  - Suspended Oil Well: [Symbol]

**GEOGRAPHIC CO-ORDINATES:**

CENTER OF SITE  
N 50°01'12.61" Latitude } GPS Measured  
W 101°04'23.71" Longitude } NAD 83

**CARTESIAN CO-ORDINATES:**

CENTER OF SITE  
62.07 North } of SW Corner Sec 23  
500.89 East }

**ELEVATIONS:**

Site Corner Elevations:  
NW 475.0 NE 474.9  
SW 474.7 SE 474.9

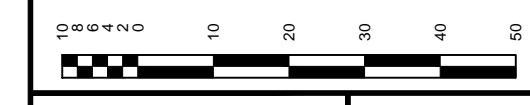
I, Steven M. Drew, Manitoba Land Surveyor, certify that the survey represented by this plan is true and correct to the best of my knowledge and was completed on the 18th day of August, 2016.

Manitoba Land Surveyor  
Witness (Casey-Lee Ullmann)

This is a copy of an original plan, signed and sealed by Steven M. Drew, Manitoba Land Surveyor. The original plan is held on file in the office of Midwest Surveys (Manitoba Land Surveying). This copy has been prepared for distribution via electronic and other means. Should there be a discrepancy between this document and the original document, the signed, sealed, original document shall govern.



**BATTERY SITE PLAN**  
IN  
**LS 3, Sec 23, Twp 12, Rge 27, WPM**  
**(NORTH HARGRAVE)**  
**R.M. OF WALLACE - WOODWORTH**



<b>SCALE 1:1000</b>	<b>MIDWEST SURVEYS (MANITOBA LAND SURVEYING)</b> STEVEN M. DREW M.L.S. ESTEVAN - PHONE: 306-634-2635 FAX: 306-634-3164	<b>REVISION 0</b> EM-0024-16-BAT
<b>SHEET No. 1 of 1</b>		