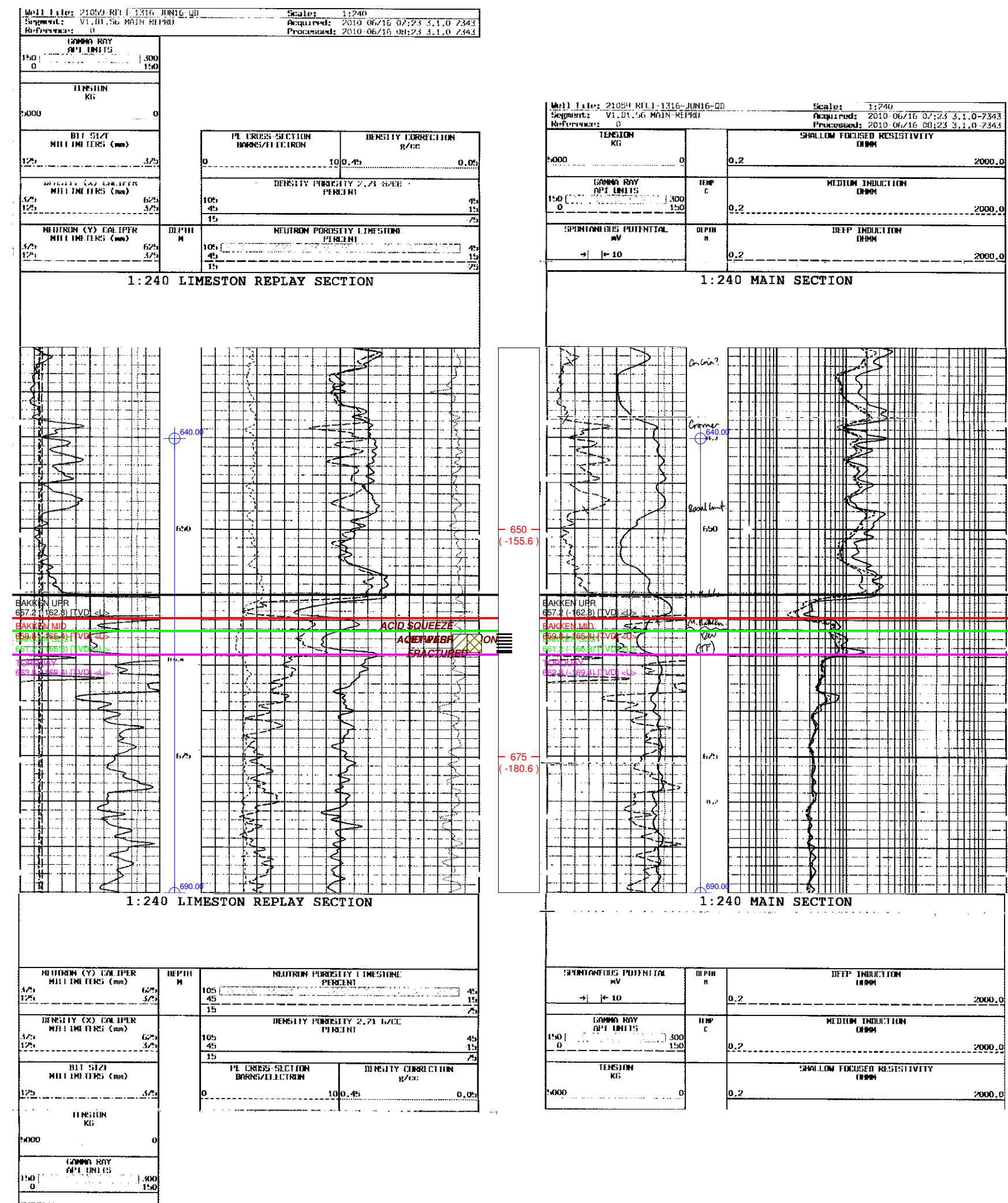


East Manson Unit 5
Stratigraphic X-section C-C'
Datum: Upper Bakken Shale

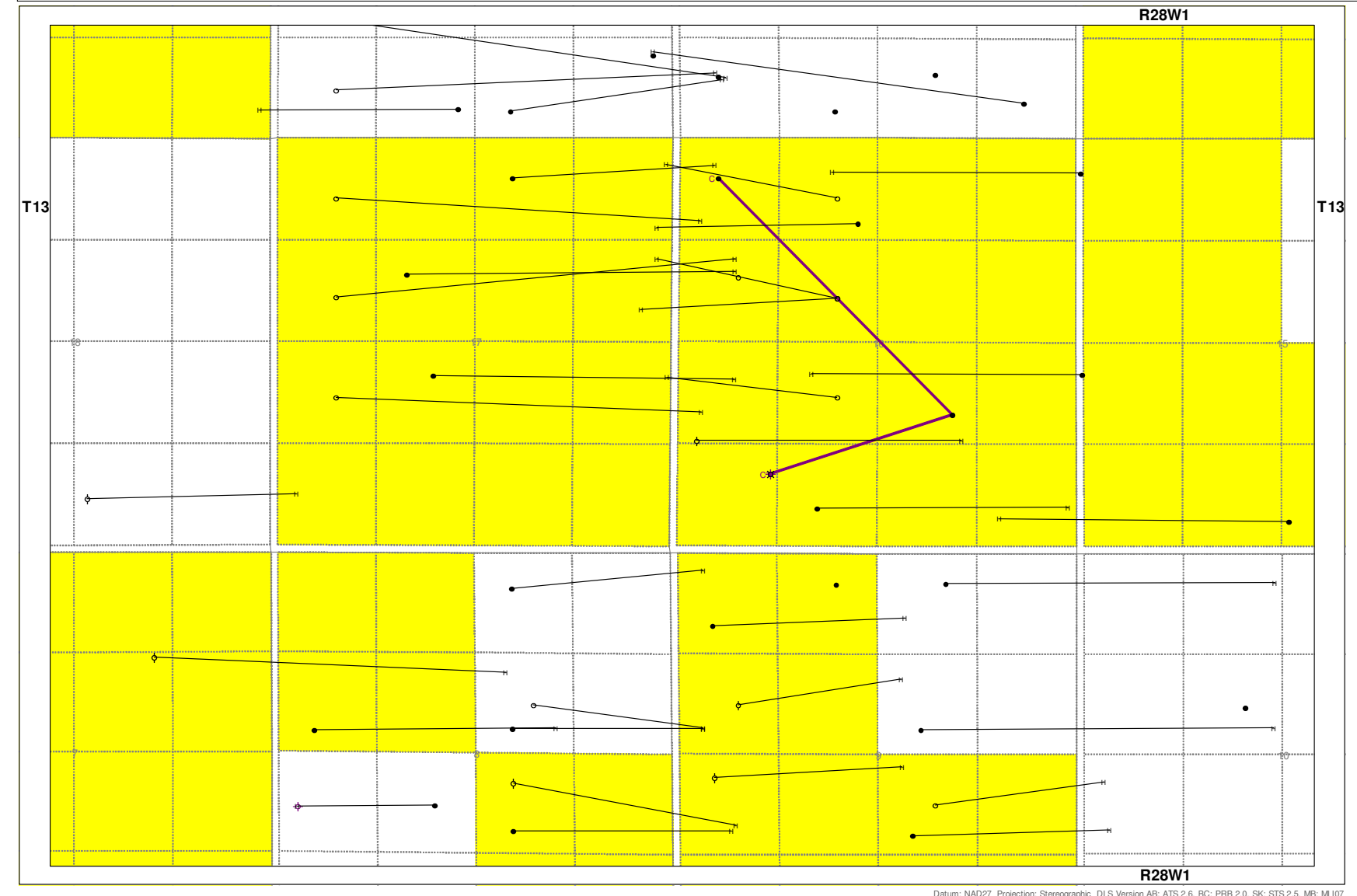
00/13-16-013-28W1/0
KB: 494.4 m RR: 2010-06-16
TD: 722.0 m [TVD] FormTD: BIRDBER
Mode: Prod Fluid: Oil
CPEC EAST MANSON PROV. 13-16-13-28 (WPM)

1348.6m to next well >



DST Information

	Prod Oil (m3)	Gas (E3m3)	Water (m3)
Cum	2126.0	0.0	670.1
Daily	1.5	0.0	0.5

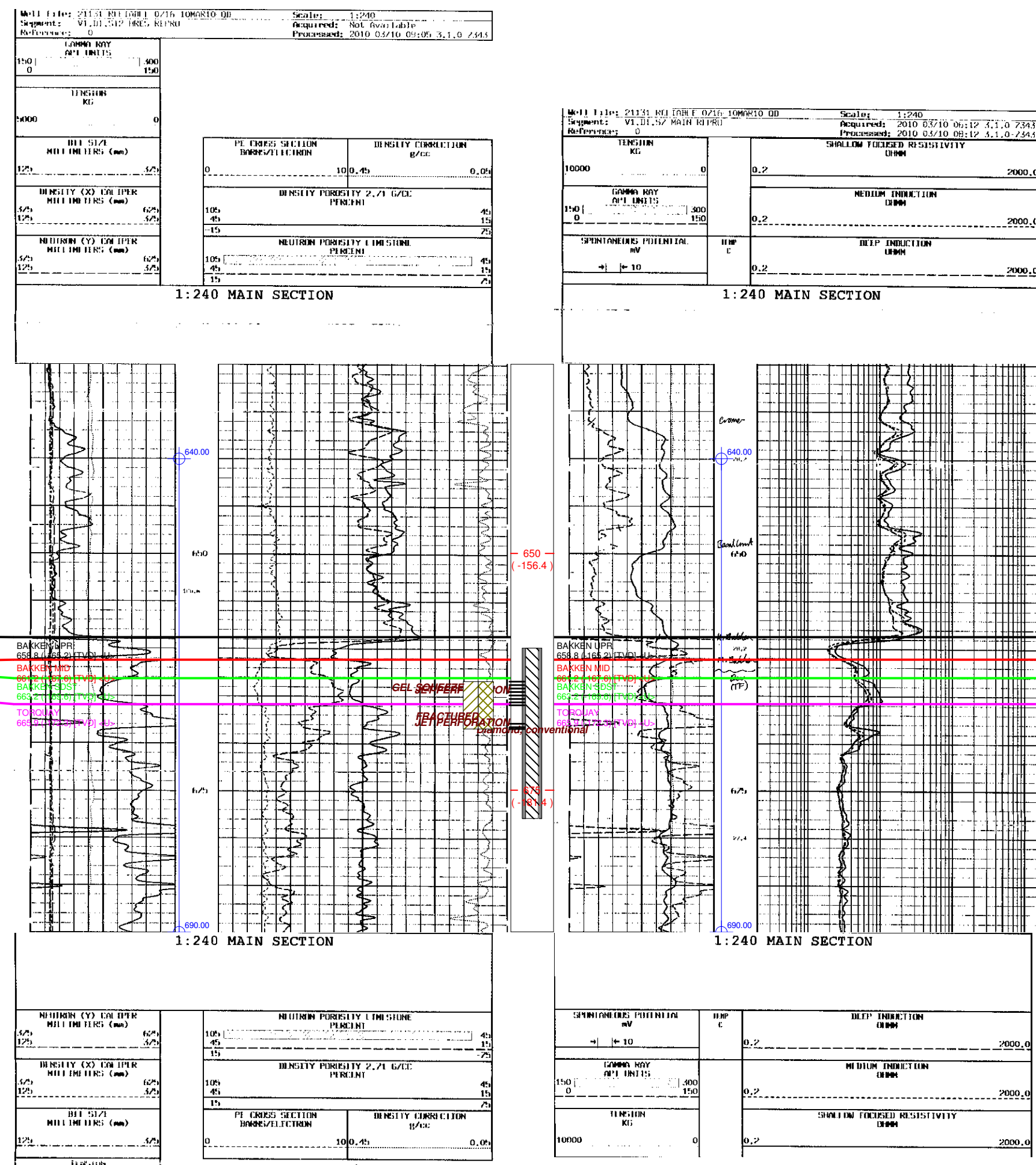


00/07-16-013-28W1/0

KB: 493.6 m RR: 2010-03-11
TD: 714.0 m [TVD] FormTD: BIRDBER
Mode: Prod Fluid: Oil
CPEC EAST MANSON PROV. 7-16-13-28 (WPM)

< 1348.6m to previous well

779.8m to next well >



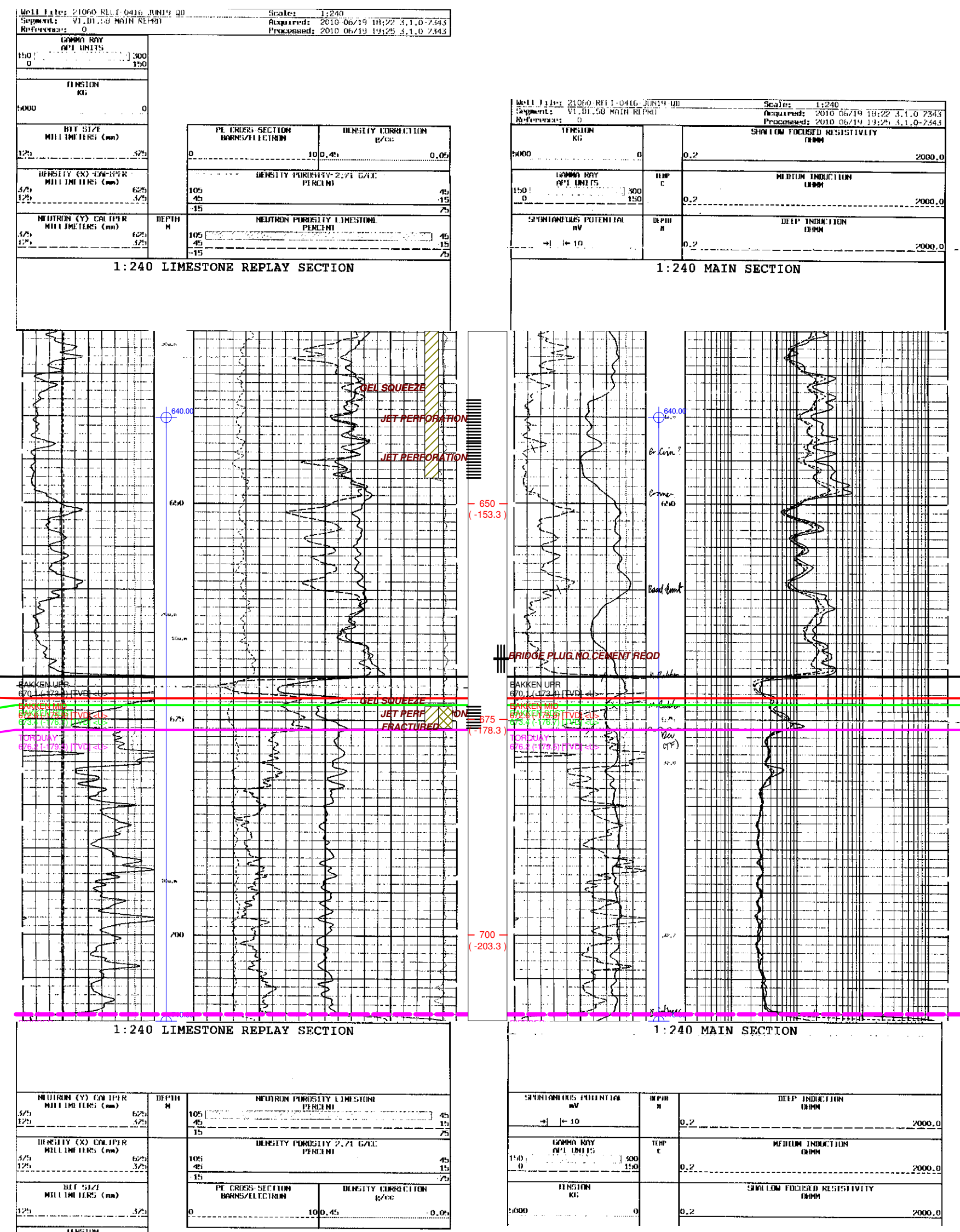
DST Information

	Prod Oil (m3)	Gas (E3m3)	Water (m3)
Cum	4730.3	0.0	438.9
Daily	3.2	0.0	0.3

00/04-16-013-28W1/0

KB: 496.7 m RR: 2010-06-20
TD: 737.0 m [TVD] FormTD: BIRDBER
Mode: Abd Zone Fluid: Oil
CPEC EAST MANSON SWD 4-16-13-28 (WPM)

< 779.8m to previous well



DST Information

	Prod Oil (m3)	Gas (E3m3)	Water (m3)
Cum	43.4	0.0	240.2
Daily	0.4	0.0	2.0