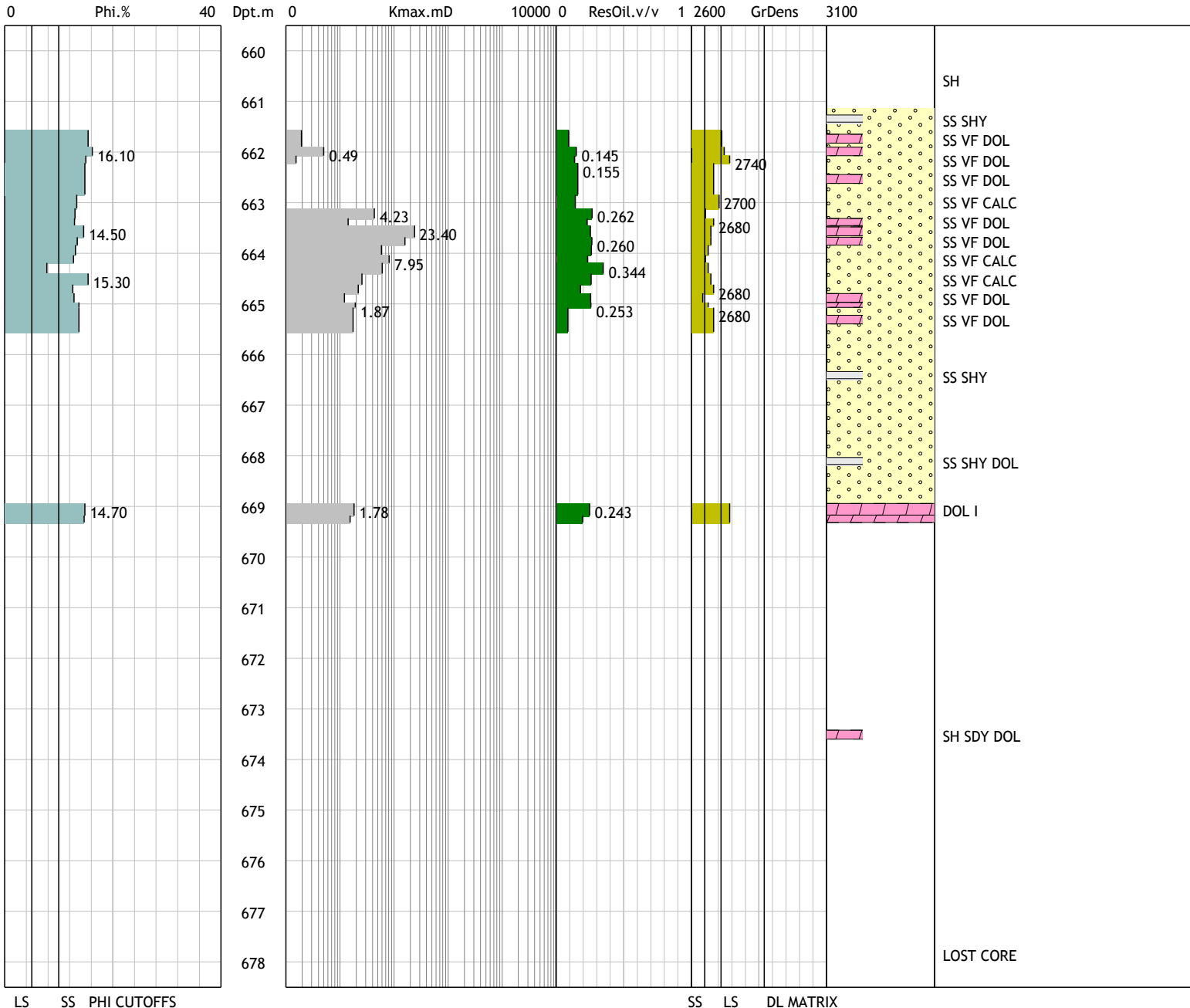


Core Analysis Summary 00/07-16-013-28W1/0

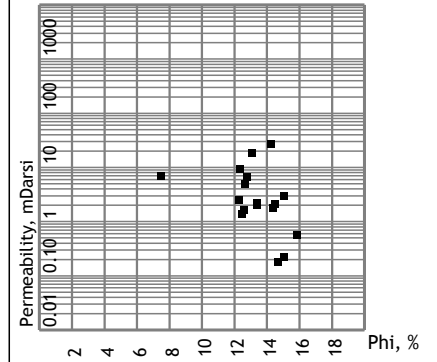
UWI: 00/07-16-013-28W1/0
 Name: CPEC EAST MANSON PROV. 7-16-13-28 (WPM)
 Licensee: CRESCENT POINT ENERGY LTD.
 Operator: CRESCENT POINT ENERGY LTD.
 On Prod: 2010-03-01

Status: Producing/Oil
 Lahee: OUTPOST
 Field: MANSON
 Pool: BAKKEN-THREE FORKS B
 Unit:

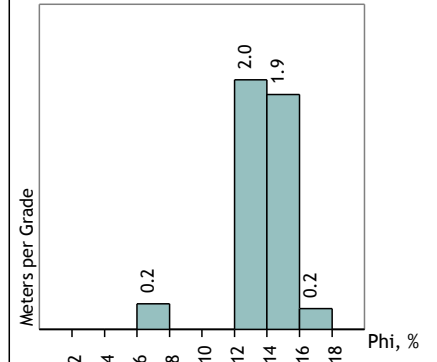
License: 2010-03-03
 Spud: 2010-03-07
 Rig Rel: 2010-03-11
 KB E(m): 493.6
 Gr E(m): 489.8



Core: Perm.Kmax vs Phi
 Samples 17, 661.6 - 669.2



Core: Porosity Statistics [mts]
 Samples 19, 661.6 - 669.2



Total Porous Thickness:

Phi > 10.0 [SS CUTOFF] 4.1m
 Phi > 5.0 [LS CUTOFF] 4.4m

Maximum Readings:

Max Phi 16.1% @661.9m
 Max Perm 23.4mD @663.5m
 Max ResOil 0.34v/v @664.2m

LS SS PHI CUTOFFS

SS LS DL MATRIX