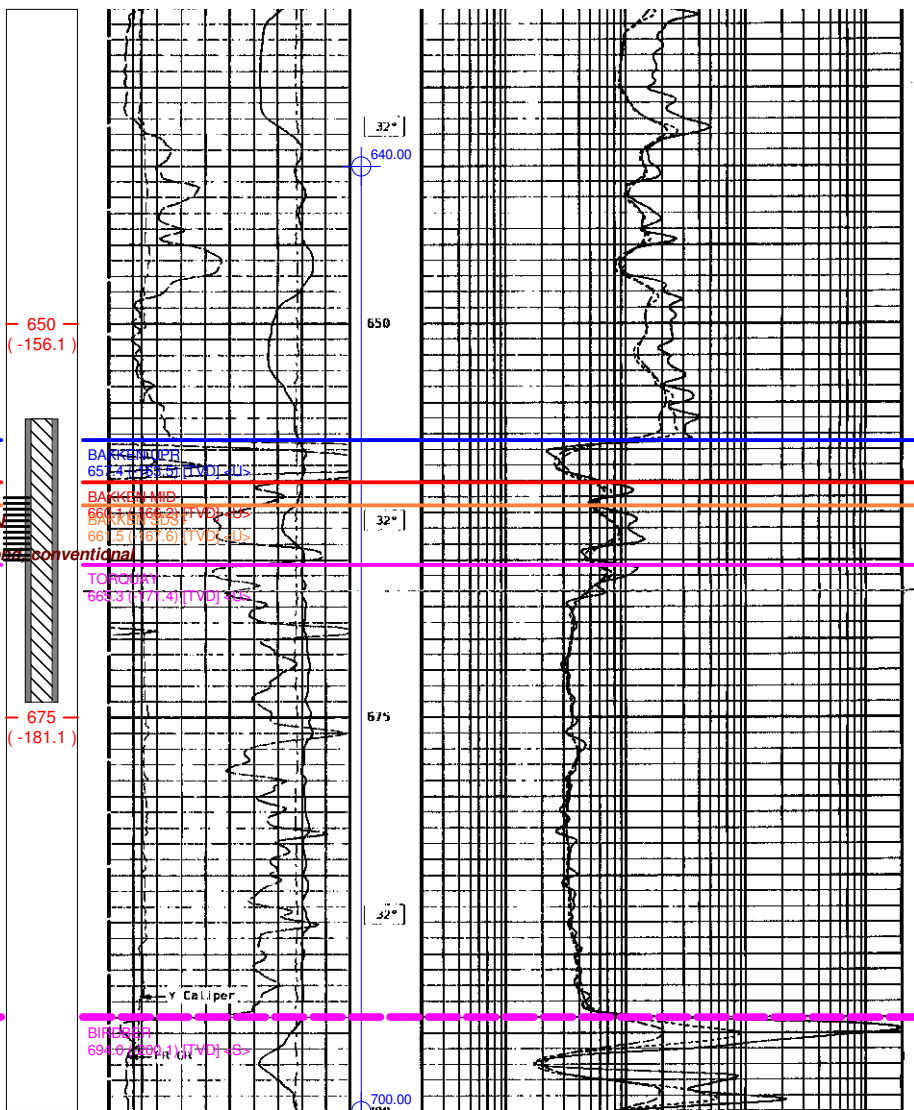
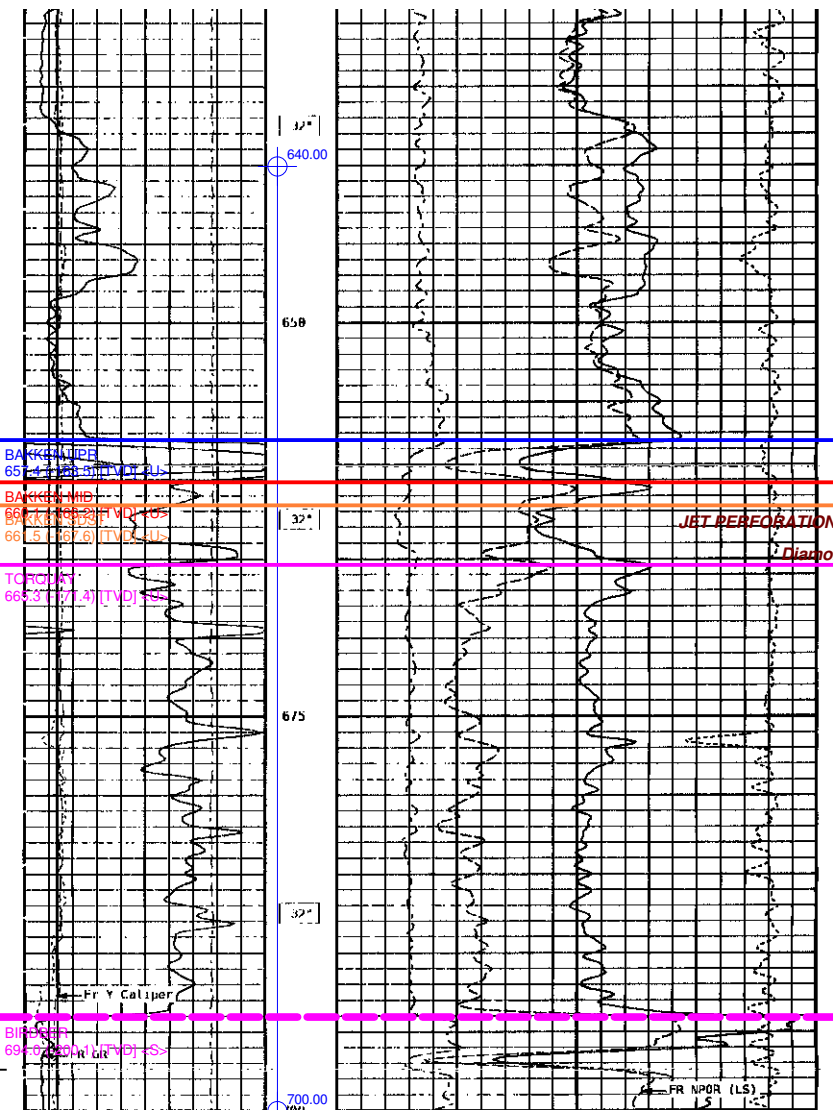


00/03-21-013-28W1/0
 KB: 493.9 m RR: 2010-08-05
 TD: 717.0 m [TVD] FormTD: BIRDBER
 Mode: Prod Fluid: Oil
 FORT CALGARY EAST MANSON 3-21-13-28 (WPM)

REMARKS			
MAIN PASS 1-240 SCALE LIMESTONE MATRIX			
DEPTH SCALE: 1:240		VERSION: 143R 2.0b	
MAIN PASS			
30088523 STIMP			
FINISH DEPTH: 665.9 Meters DIRECTION: UP DATE: 08/05/2010 TIME: 03:17 MODE: TRACE PLAYBACK			
Tension 10000 Pounds 0	Y Caliper 125 Millimeters 375	PhotoElectric-Effect 0.0	Density Correction 10.0450 Kilograms/Cu Meter -58
Gamma Ray 0 API 150	X Caliper 125 Millimeters 375	Neut. Porosity (LS) 45.0 Percent	-15.0
		Den. Porosity (LS) 45.0 Percent	-15.0

Tension 10000 Pounds 0	Y Caliper 125 Millimeters 375	SFL Resistivity 0.20 OhmMeters 2000.00
Gamma Ray 0 API 150	X Caliper 125 Millimeters 375	20K Medium STI 0.20 OhmMeters 2000.00
SP -100 Millivolts 50		20K Deep STI 0.20 OhmMeters 2000.00



X Caliper 125 Millimeters 375	Den. Porosity (LS) 45.0 Percent -15.0
----------------------------------	--

SP 100 Millivolts 50	20K Deep STI 0.20 OhmMeters 2000.00
-------------------------	--