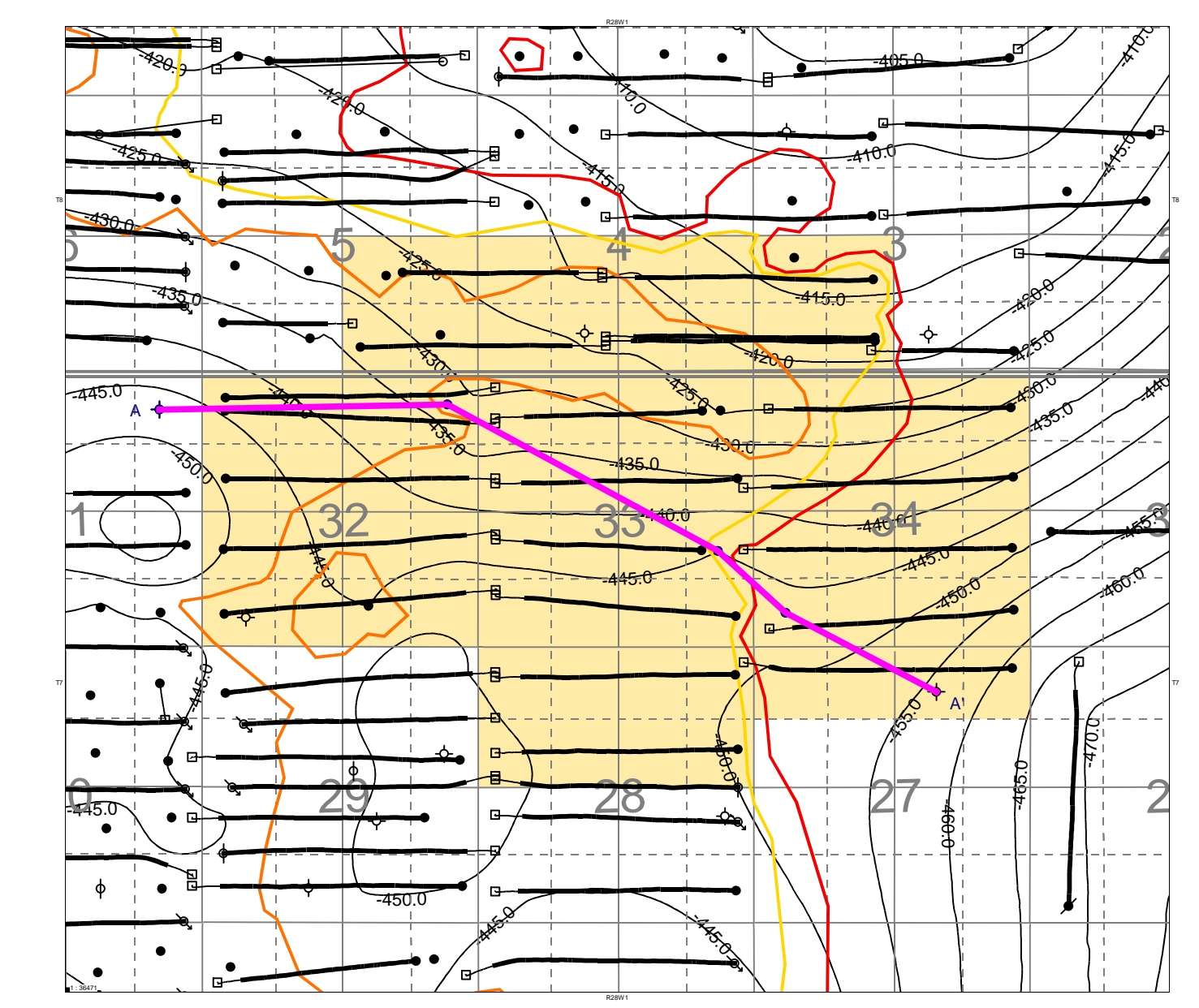
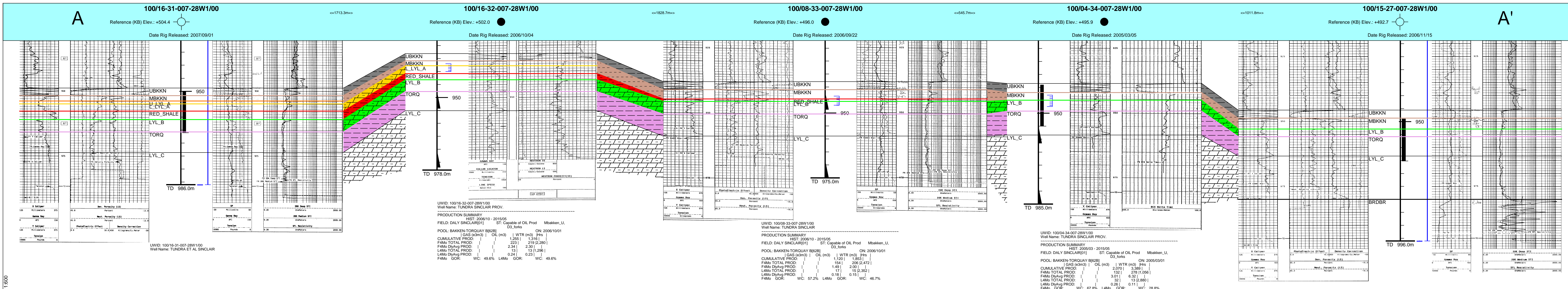


Proposed Ewart Unit No. 10
Application for Enhanced Oil Recovery Waterflood Project

LIST OF APPENDICES

Appendix 1	Ewart Unit No. 10 - Structural Cross Section
Appendix 2	Ewart Unit No. 10 – Offsetting Units
Appendix 3	Ewart Unit No. 10 – Upper Bakken Isopach
Appendix 4	Ewart Unit No. 10 – Middle Bakken Isopach
Appendix 5	Ewart Unit No. 10 – Upper Lyleton A Isopach
Appendix 6	Ewart Unit No. 10 – Lower Lyleton A Isopach
Appendix 7	Ewart Unit No. 10 - Red Shale Isopach
Appendix 8	Ewart Unit No. 10 - Lyleton B Isopach
Appendix 9	Ewart Unit No. 10 - Torquay Isopach
Appendix 10	Ewart Unit No. 10 – Upper Bakken Structure
Appendix 11	Ewart Unit No. 10 – Middle Bakken Structure
Appendix 12	Ewart Unit No. 10 – Upper Lyleton A Structure
Appendix 13	Ewart Unit No. 10 – Lower Lyleton A Structure
Appendix 14	Ewart Unit No. 10 - Red Shale Structure
Appendix 15	Ewart Unit No. 10 - Lyleton B Structure
Appendix 16	Ewart Unit No. 10 - Torquay Structure
Appendix 17	Ewart Unit No. 10 – Middle Bakken k-h
Appendix 18	Ewart Unit No. 10 – Upper Lyleton A k-h
Appendix 19	Ewart Unit No. 10 – Lower Lyleton A k-h
Appendix 20	Ewart Unit No. 10 – Lyleton B k-h
Appendix 21	Ewart Unit No. 10 – Middle Bakken phi-h
Appendix 22	Ewart Unit No. 10 – Upper Lyleton A phi-h
Appendix 23	Ewart Unit No. 10 – Lower Lyleton A phi-h
Appendix 24	Ewart Unit No. 10 – Lyleton B phi-h
Appendix 25	Core Data Coverage



Appendix 1

Tundra Oil & Gas Partnership
PROPOSED EWART UNIT 10
Cross Section A - A'

Licensed to: Tundra Oil and Gas Ltd
Date: 2015/07/22
By: Hacker
Scale: 1:500
Interval: From UBKKN to T.D.



R29

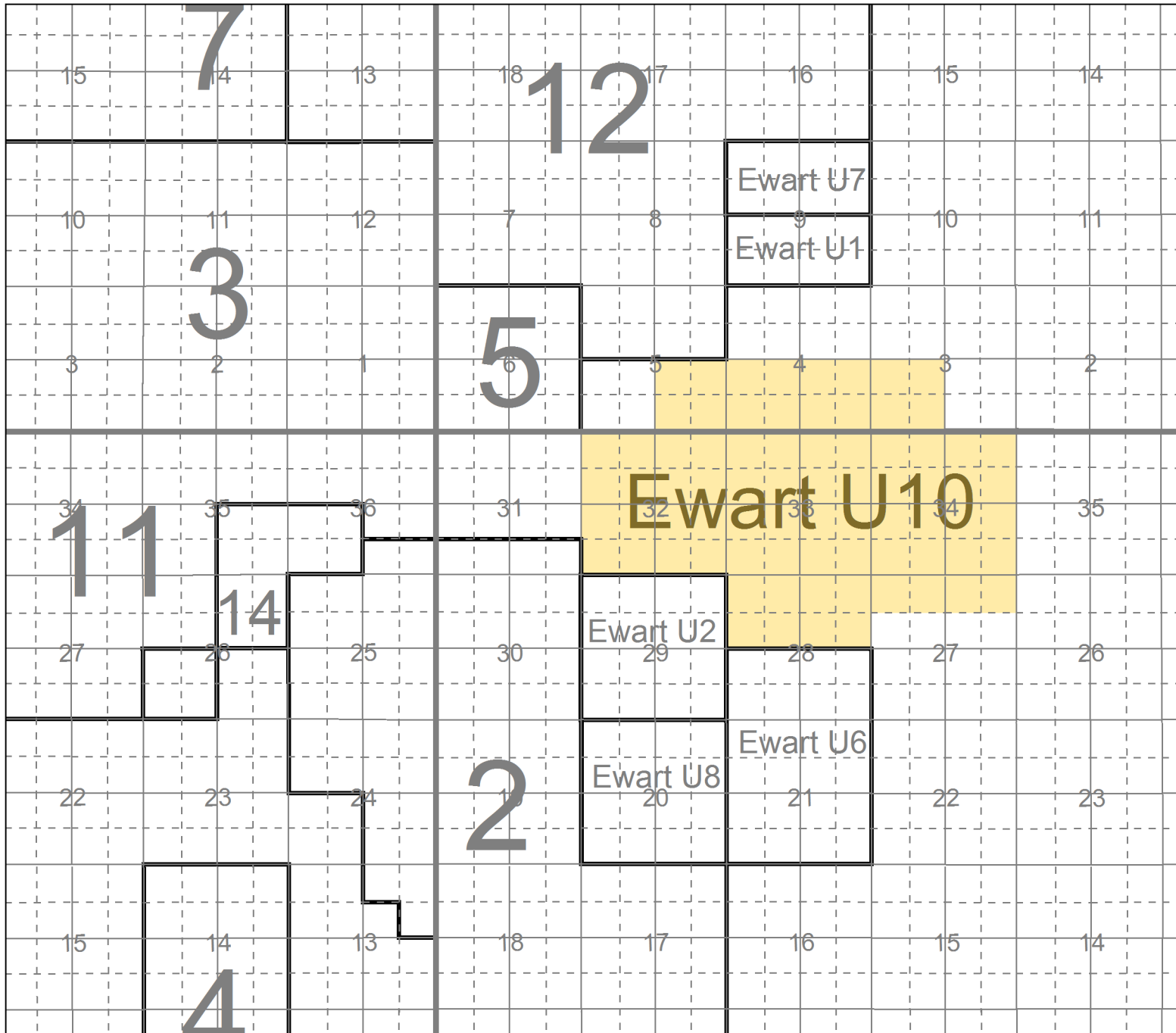
R28W1

T8

T8

T7

T7



Appendix 2

Tundra Oil & Gas Partnership	
PROPOSED EWART UNIT 10	
Proposed Ewart Unit 10 Boundary	
Offsetting Units	
Licensed to: Tundra Oil & Gas Partnership	
By: <input type="text"/>	Date: 2015/07/22
Scale: 1:5000	Project: Singing Dairy 2015 Extension

R29

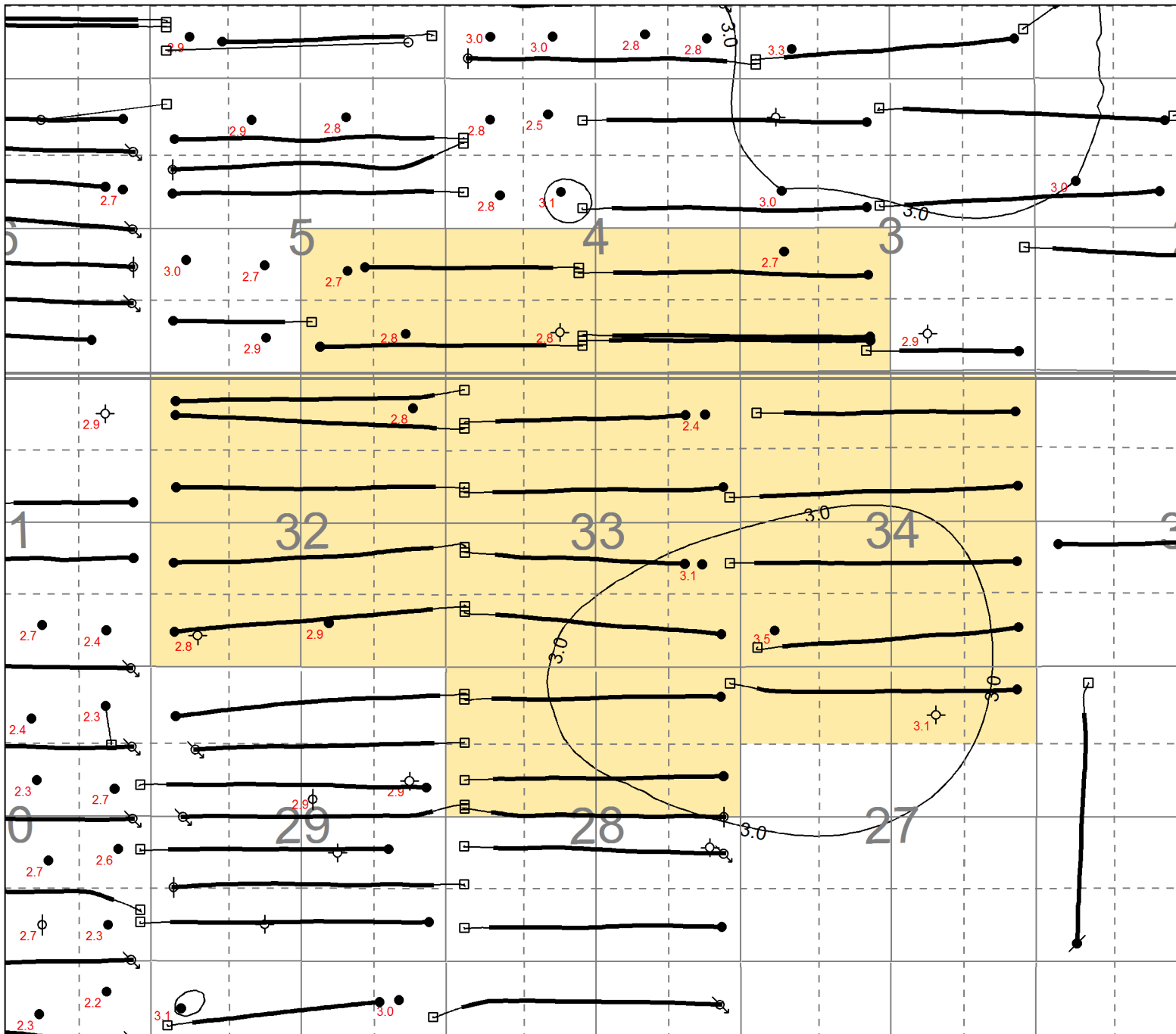
R28W1



R28W1

T8

T8



T7

T7

R28W1

Appendix 3

Tundra Oil & Gas Partnership			
PROPOSED EWART UNIT 10			
Upper Bakken Isopach			
CI=1.0m, Well Isopach Values in Red			
gROSCOUT	By: Brockner	Date: 2015/07/27	
	Scale: 1:31894	Project: Sinter Daily 2015 Extension	



R28W1

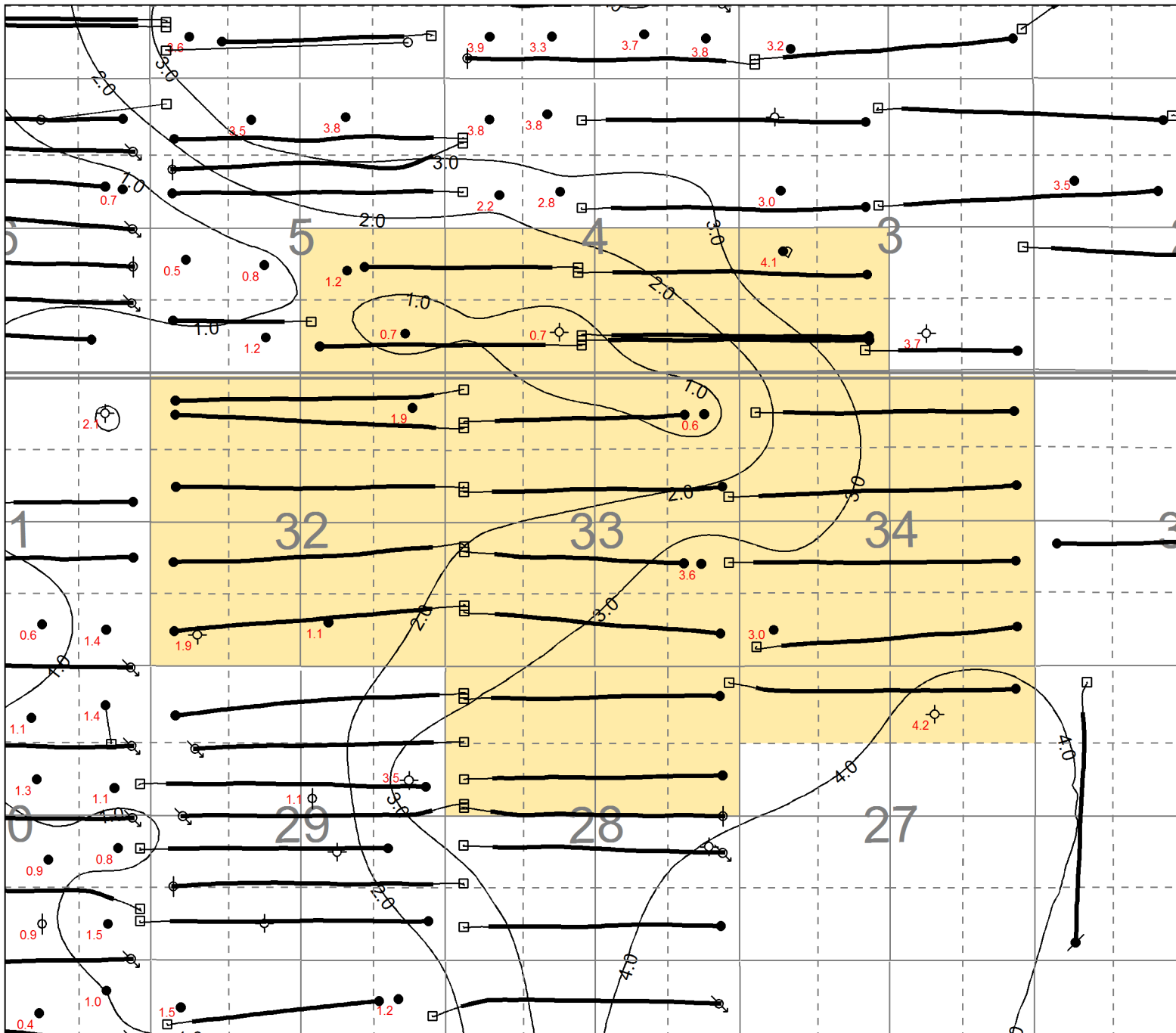
T8

T8

T7

T7

R28W1



Appendix 4

Tundra Oil & Gas Partnership			
PROPOSED EWART UNIT 10			
Middle Bakken Isopach			
CI=1.0m, Well Isopach Values in Red			
gRSCOUT	By: Brockner	Date: 2015/07/27	
	Scale: 1:31894	Project: Sinclair Dairy 2015 Expansion	



R28W1

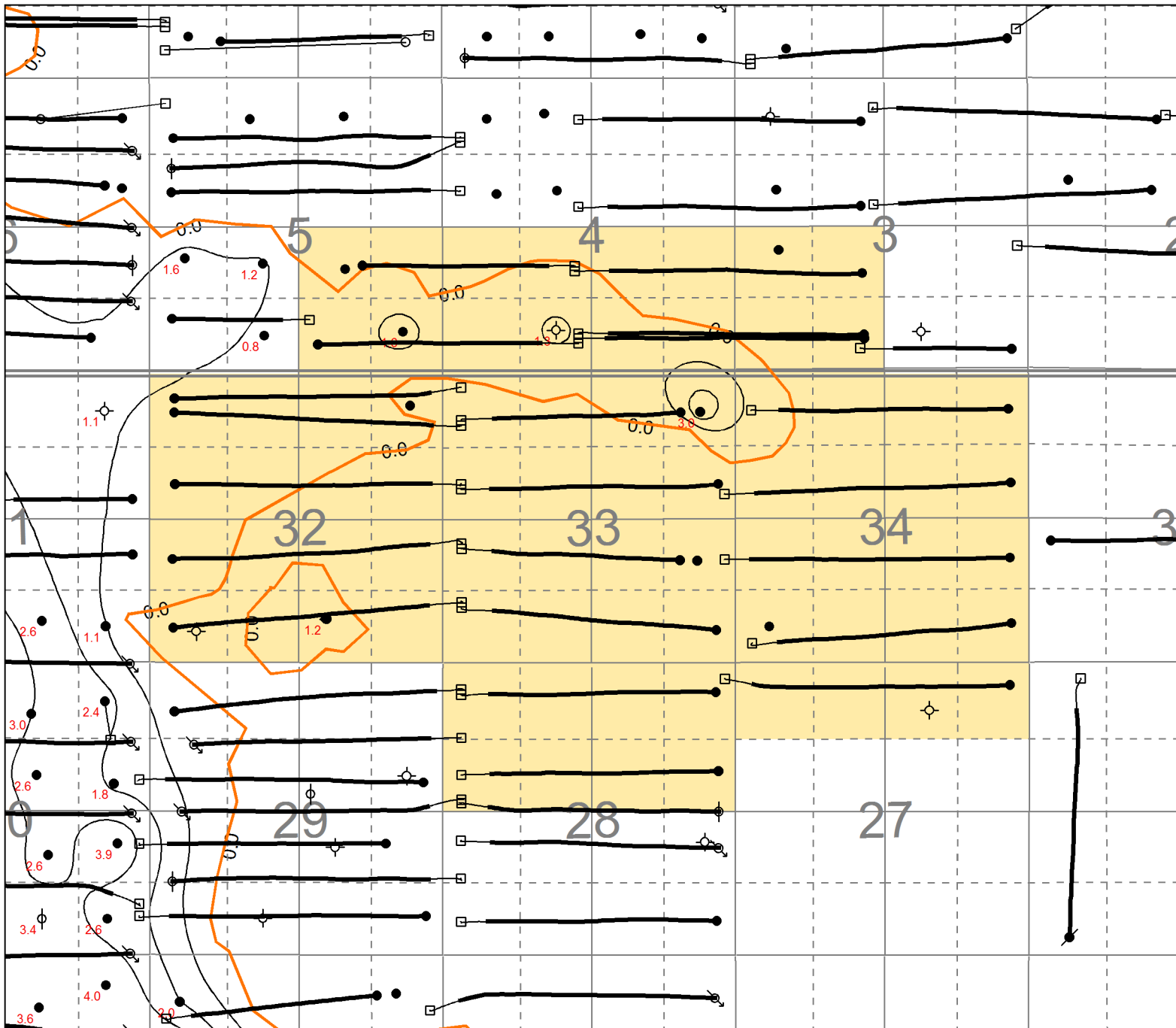
T8

T8

T7

T7

R28W1



Appendix 5

Tundra Oil & Gas Partnership			
PROPOSED EWART UNIT 10			
Upper Lyleton A Isopach			
CI=1.0m, Well Isopach Values in Red			
gROSCOUT	By: Brockner	Date: 2015/07/27	
	Scale: 1:31894	Project: Sinclair Dairy 2015 Expansion	



R28W1

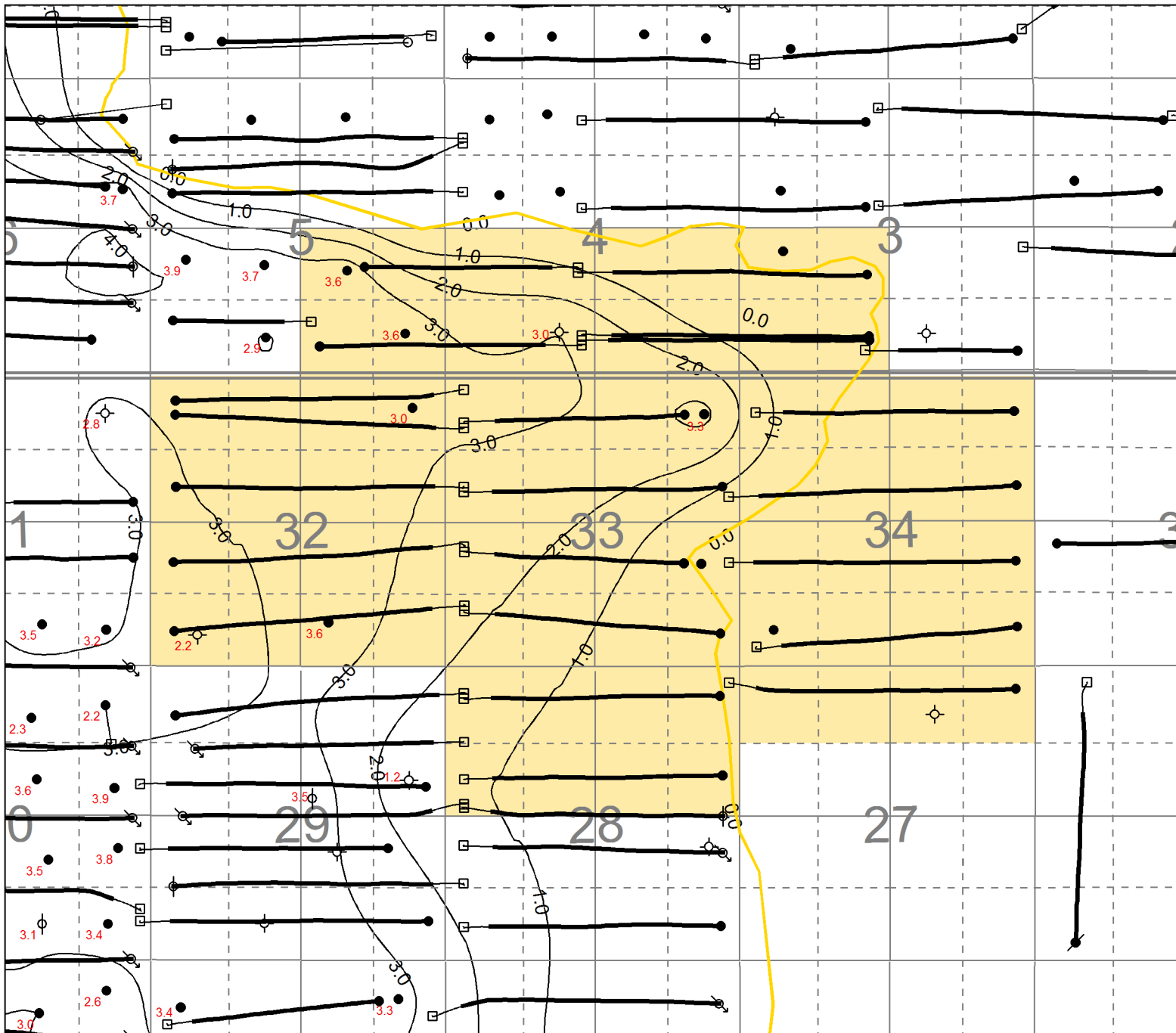
T8

T8

T7

T7

R28W1



Appendix 6

Tundra Oil & Gas Partnership			
PROPOSED EWART UNIT 10			
Lower Lyleton A Isopach			
CI=1.0m, Well Isopach Values in Red			
gRSCOUT	By: [unclear]	Date: 2015/07/27	
	Scale: 1:31894	Project: Sinter Daily 2015 Extension	



R28W1

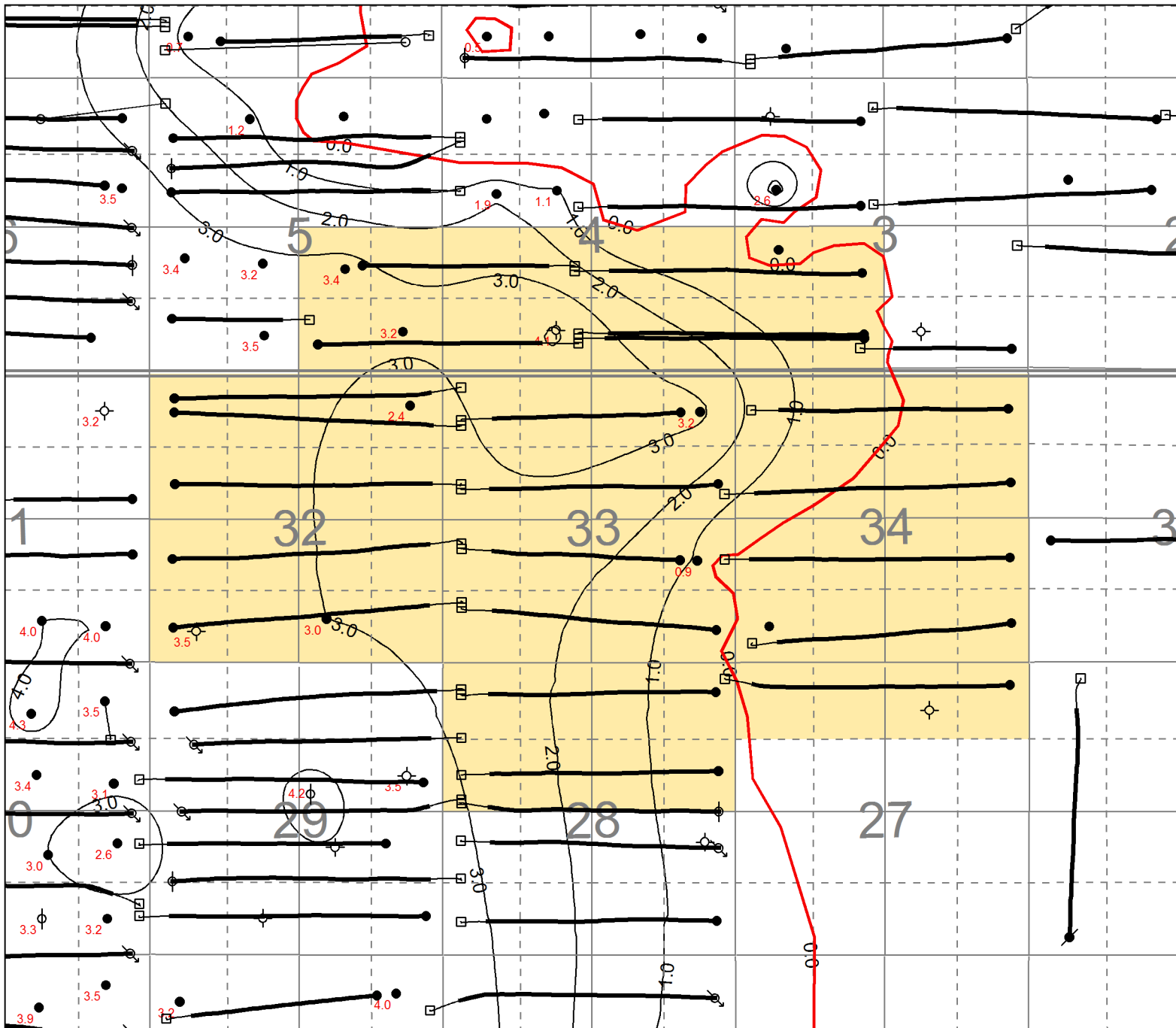
T8

T8

T7

T7

R28W1



Appendix 7

Tundra Oil & Gas Partnership	
PROPOSED EWART UNIT 10	
Red Shale Isopach	
CI=1.0m, Well Isopach Values in Red	
gRSCOUT	By: [unclear]
Scale = 1:31894	Date: 2015/07/27
Project: Sinter Doby 2015 Expansion	



R28W1

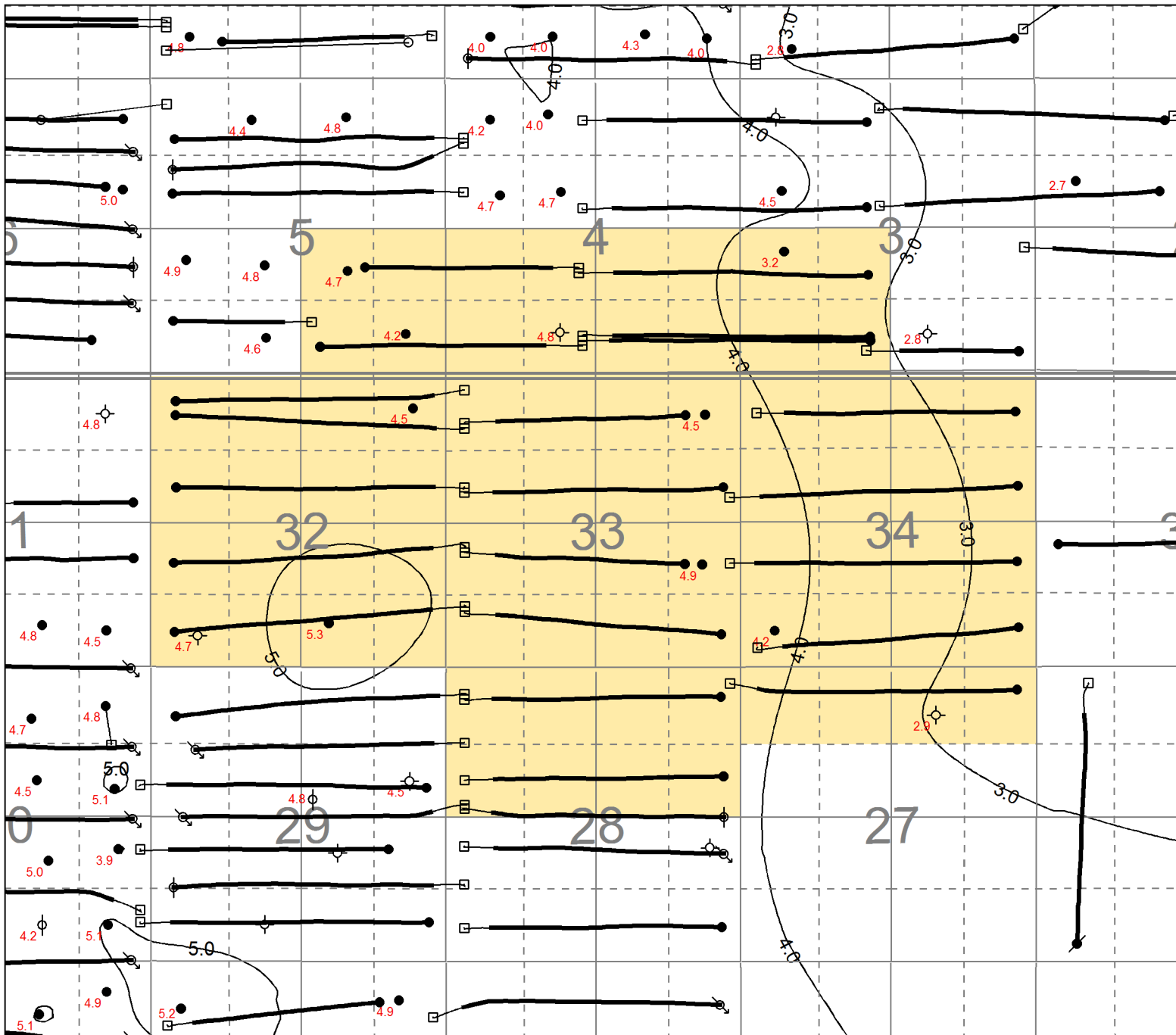
T8

T8

T7

T7

R28W1



Appendix 8

Tundra Oil & Gas Partnership	
PROPOSED EWART UNIT 10	
Lyleton B Isopach	
CI=1.0m, Well Isopach Values in Red	
gRSCOUT	Scale = 1:31894
By: [unclear]	Date: 2015/07/27
Project: Sinter Daily 2015 Extension	



R28W1

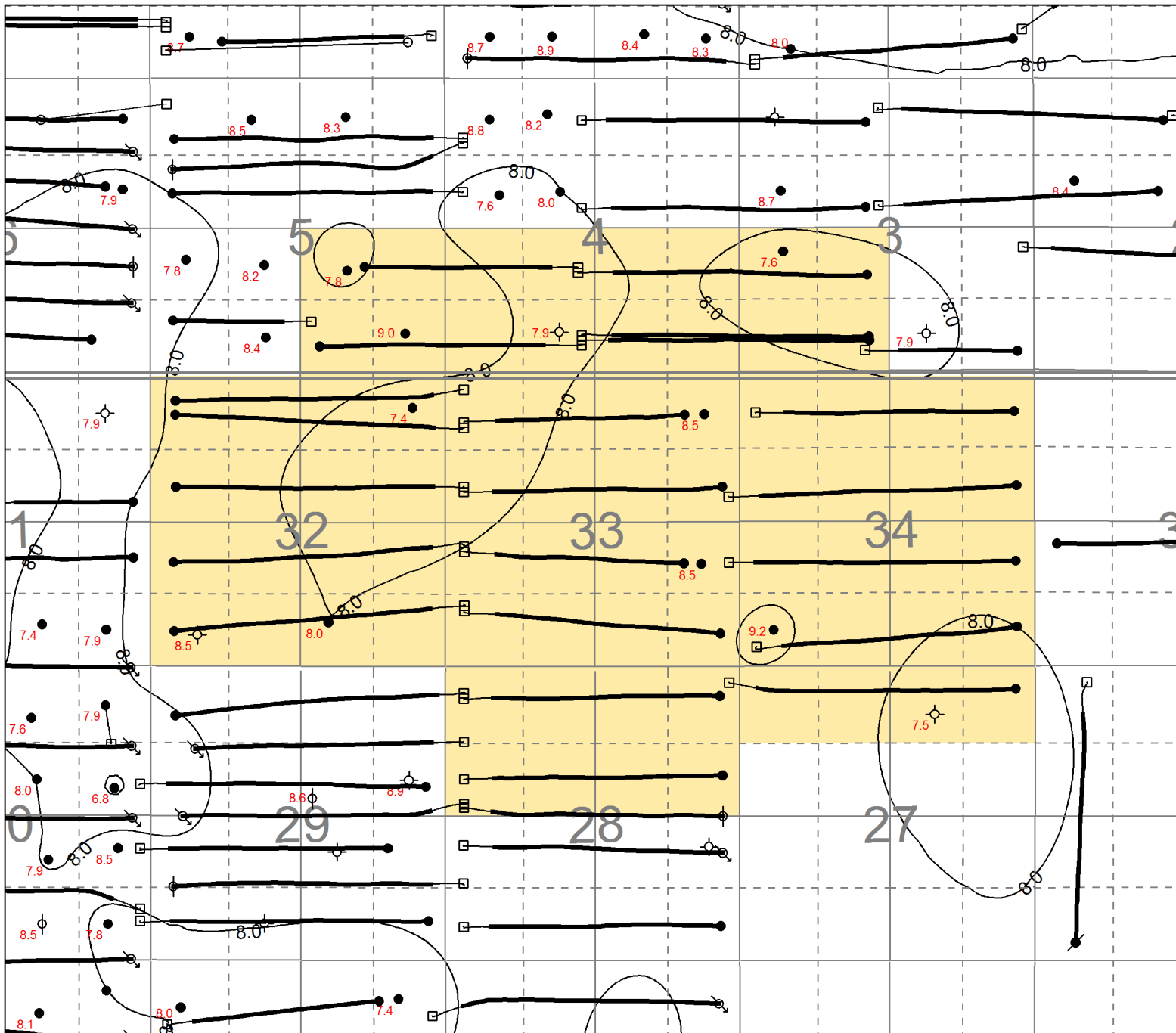
T8

T8

T7

T7

R28W1



Appendix 9

Tundra Oil & Gas Partnership			
PROPOSED EWART UNIT 10			
Torquay Shale Isopach			
CI=1.0m, Well Isopach Values in Red			
gRSCOUT	By: [unclear]	Date: 2015/07/27	
	Scale: 1:31894	Project: Sinclair Dairy 2015 Expansion	



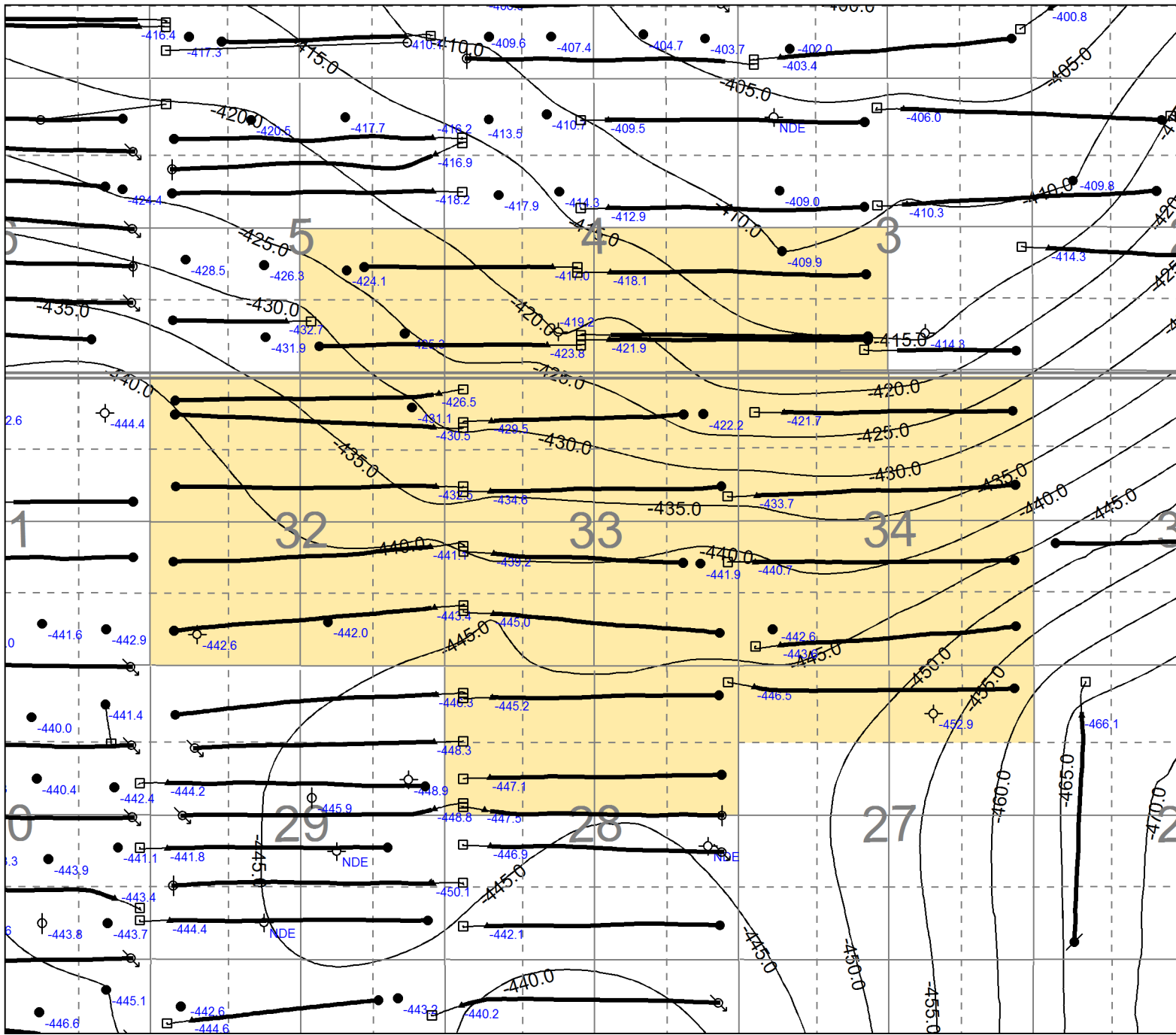
R28W1

T8

T8

T7

T7



R28W1

Appendix 10

Tundra Oil & Gas Partnership	
PROPOSED EWART UNIT 10	
Upper Bakken Structure	
CI=5.0m SS Well Elevation Values in Blue	
gSSCOUT	Scale = 1:31750
Project: Stocking Drive 2015 Economic	Date: 2015/07/27



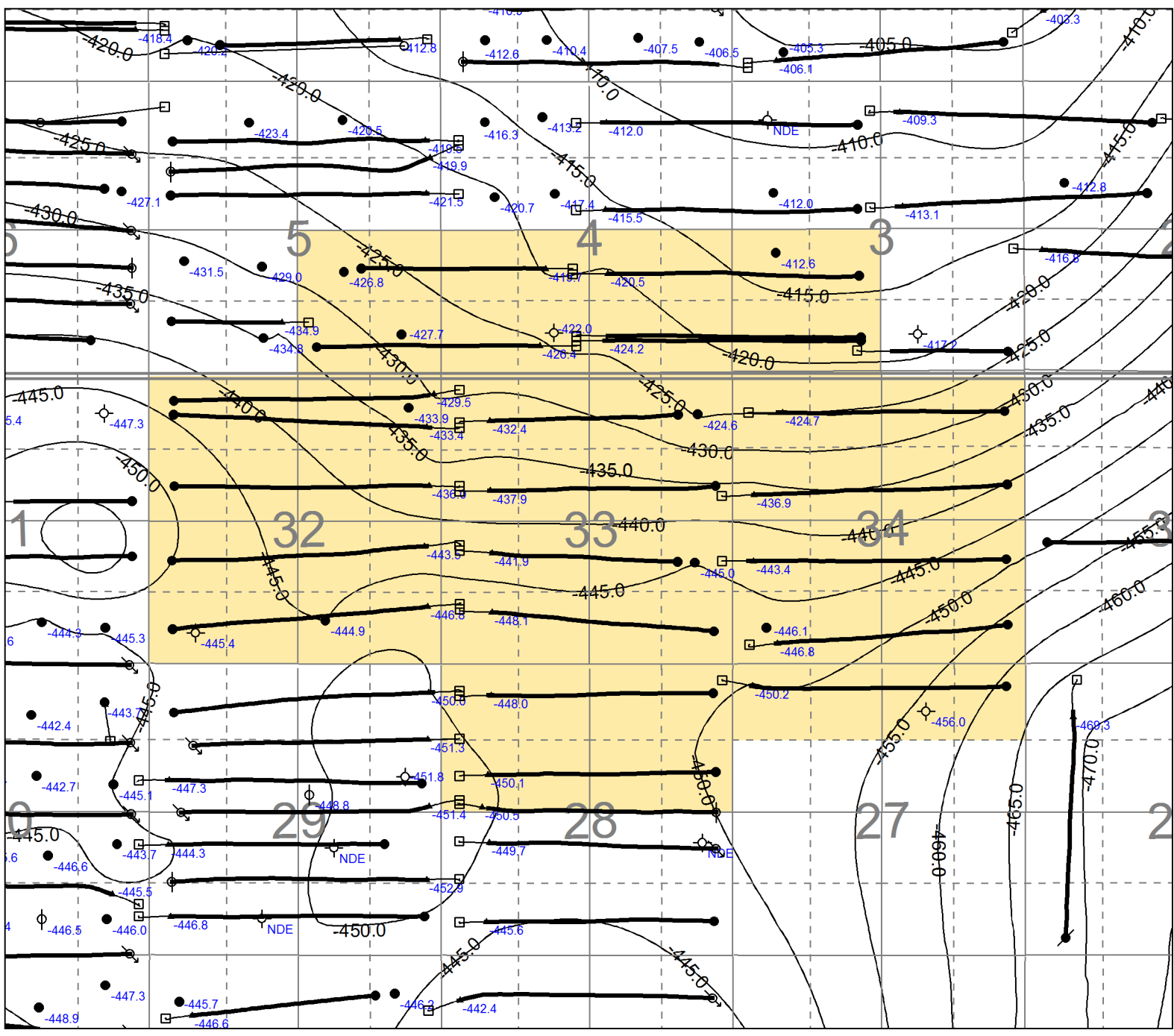
R28W1

T8

T8

T7

T7



R28W1

Appendix 11

Tundra Oil & Gas Partnership	
PROPOSED EWART UNIT 10	
Middle Bakken Structure	
CI=5.0m SS Well Elevation Values in Blue	
gSScout	Scale = 1:31750
Project: Sleight Day 2015 Escrow	Date: 2015/07/27



R28W1

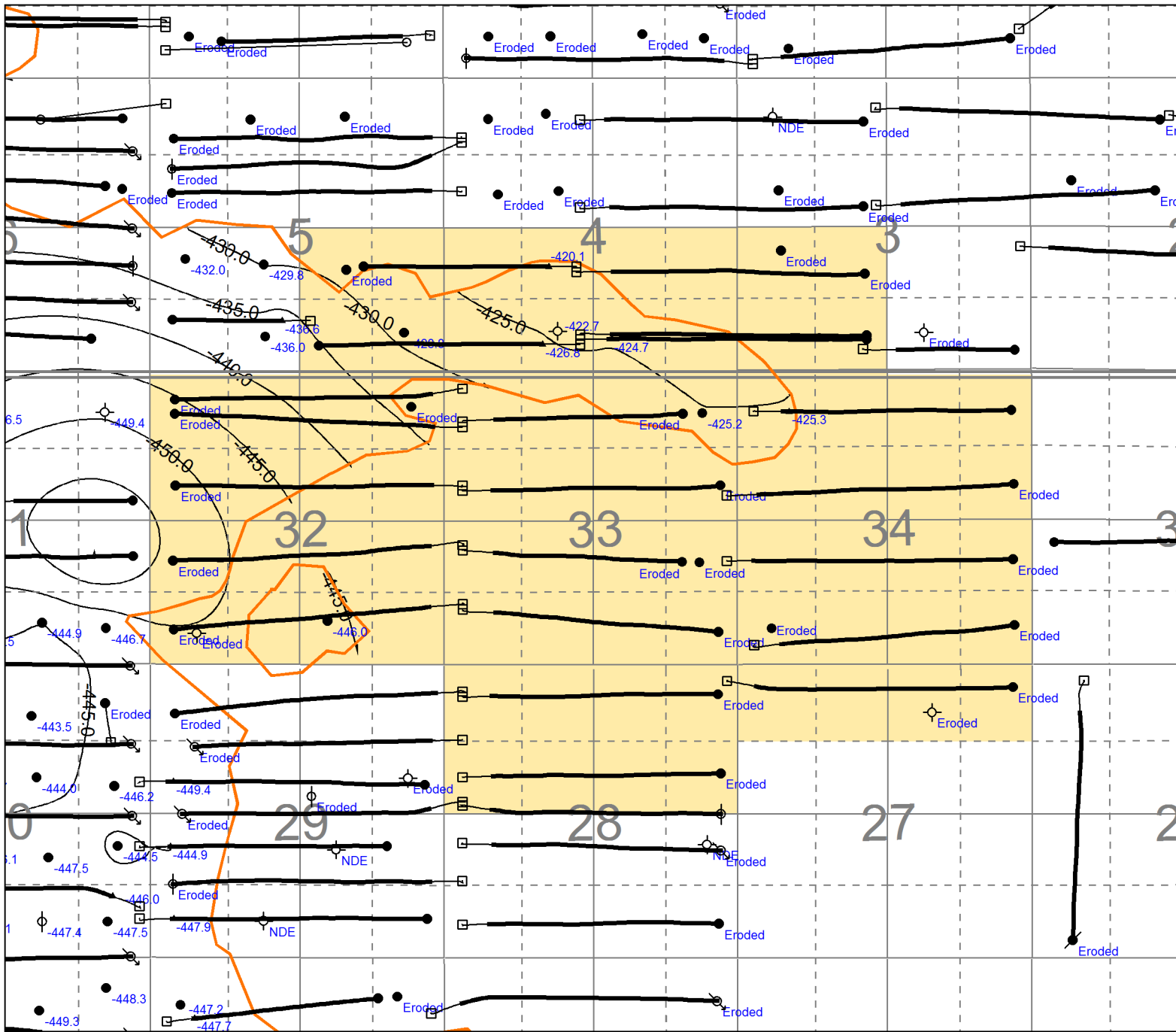
T8

T8

T7

T7

R28W1



Appendix 12

Tundra Oil & Gas Partnership
PROPOSED EWART UNIT 10
Upper Lyleton Structure
CI=5.0m SS Well Elevation Values in Blue

gSCOUT	By: [unclear]	Date: 2015/07/22
	Scale: 1:11705	Project: Singsar 2015 Expansion



R28W1

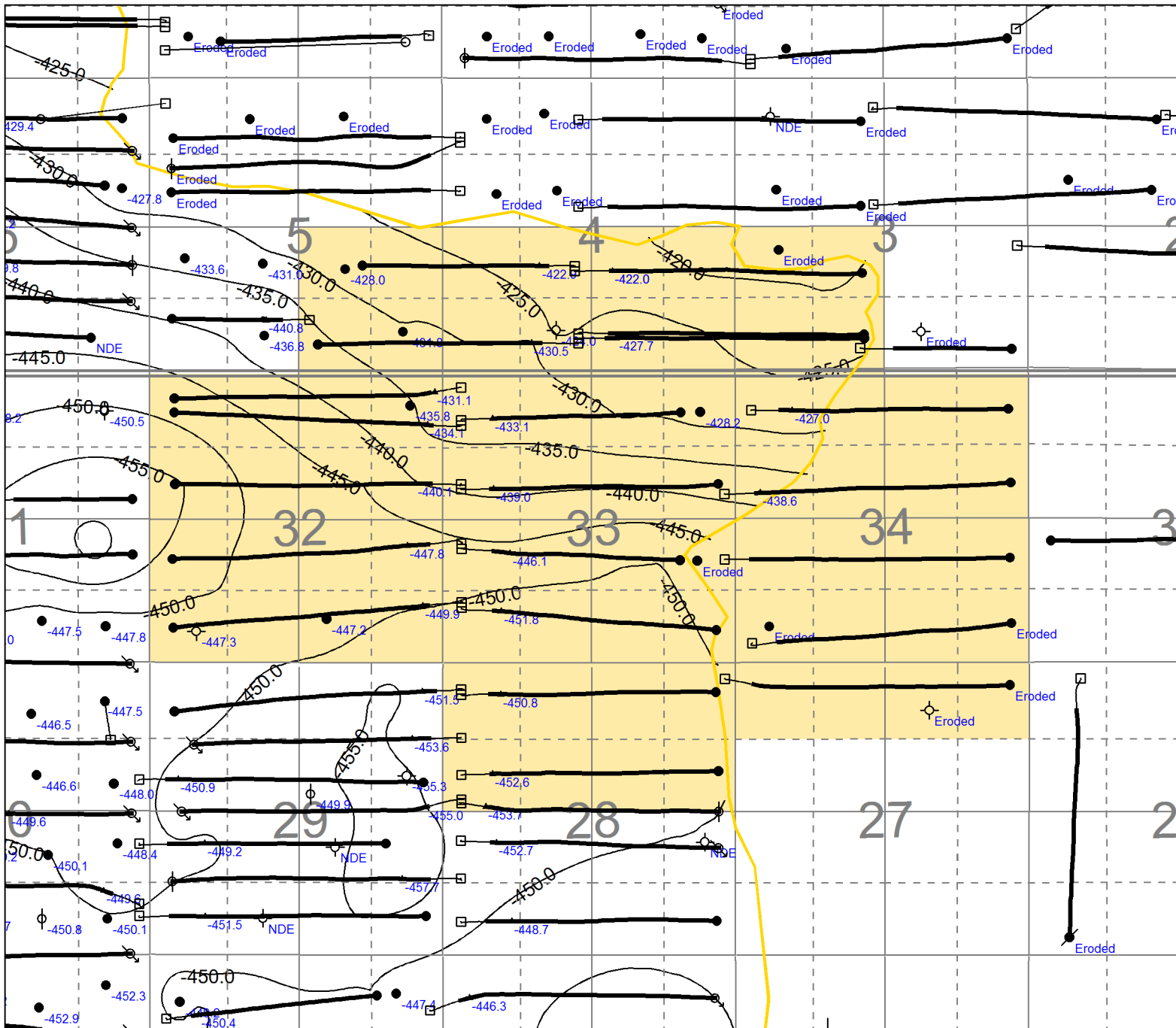
T8

T8

T7

T7

R28W1



Appendix 13

Tundra Oil & Gas Partnership	
PROPOSED EWART UNIT 10	
Lower Lyleton A Structure	
CI=5.0m SS Well Elevation Values in Blue	
gPOSCOUT	Scale = 1:31824
Project = Singlas Dairy 2014 Expansion	Date = 2015/07/22



R28W1

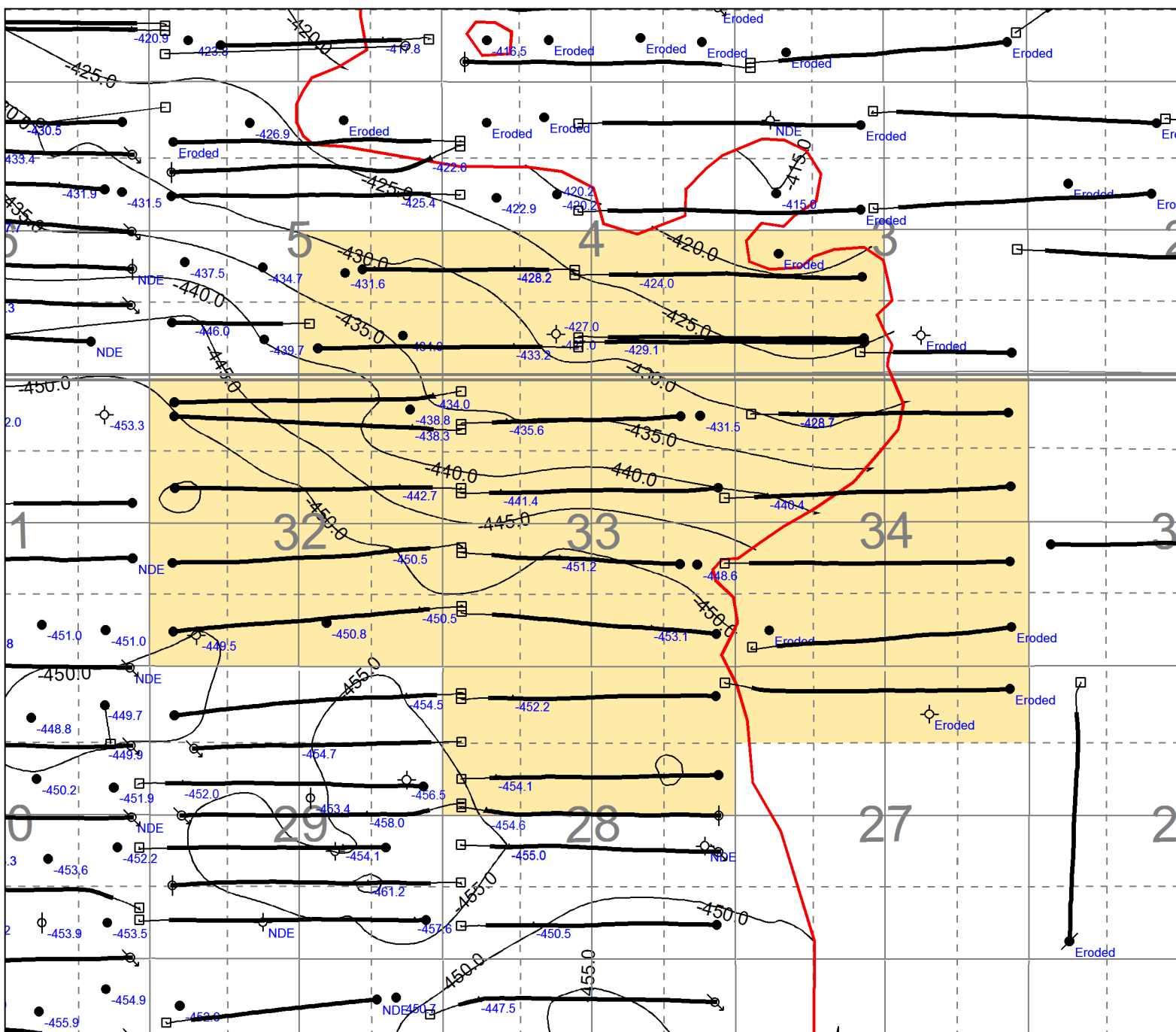
T8

T8

T7

T7

R28W1



Appendix 14

Tundra Oil & Gas Partnership	
PROPOSED EWART UNIT 10	
Red Shale Structure	
CI=5.0m SS Well Elevation Values in Blue	
gOSCOUT	Scale = 1:11934
gOSCOUT	Drawn: Sinclair July 2018 Expansion



R28W1

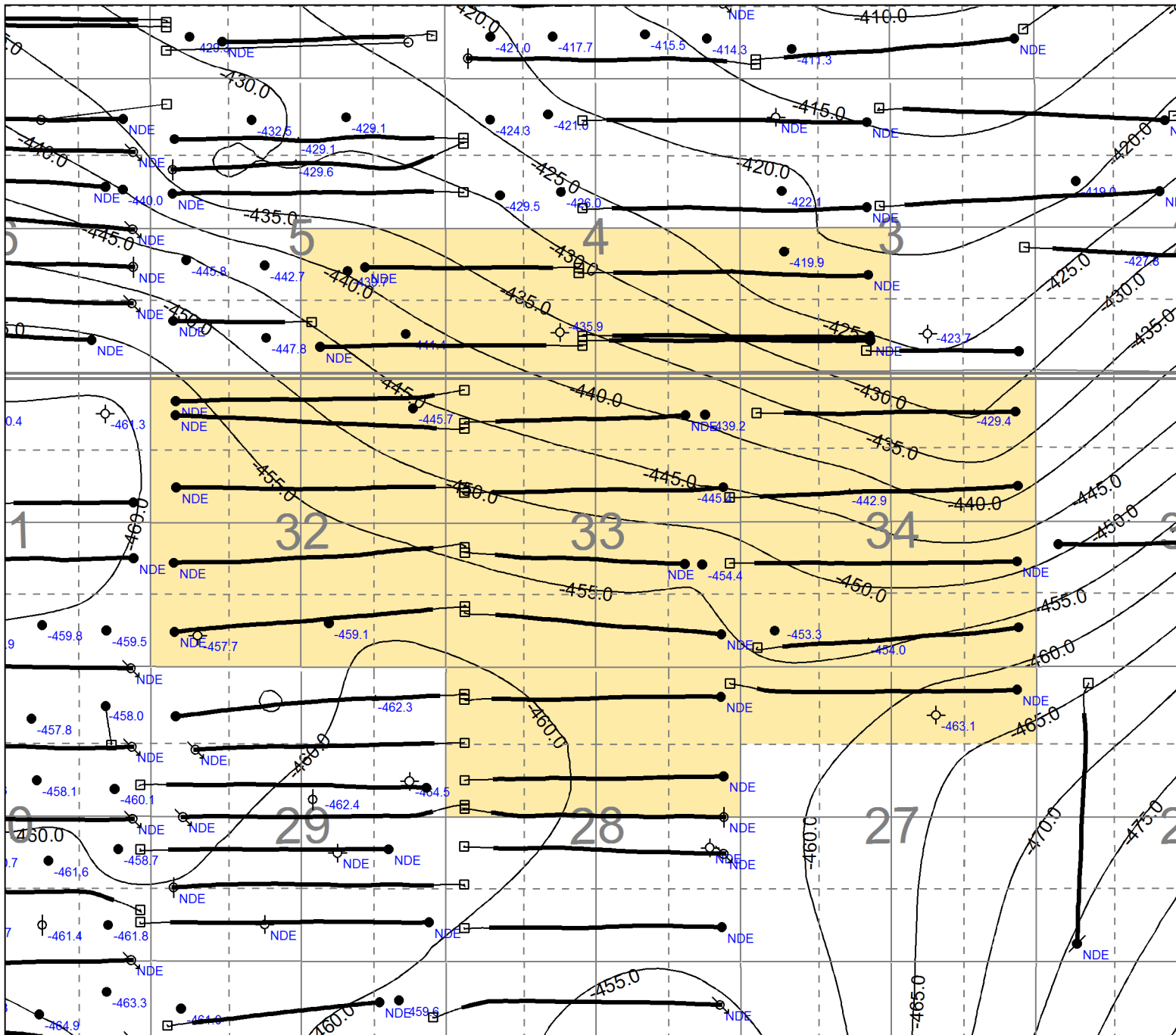
T8

T8

T7

T7

R28W1



Appendix 16

Tundra Oil & Gas Partnership	
PROPOSED EWART UNIT 10	
Torquay Shale Structure	
CI=5.0m SS Well Elevation Values in Blue	
g605COUT	Scale = 1:1000
g605COUT	Drawn - August 2014
g605COUT	Date - 2015/07/22
g605COUT	Drawn - August 2014



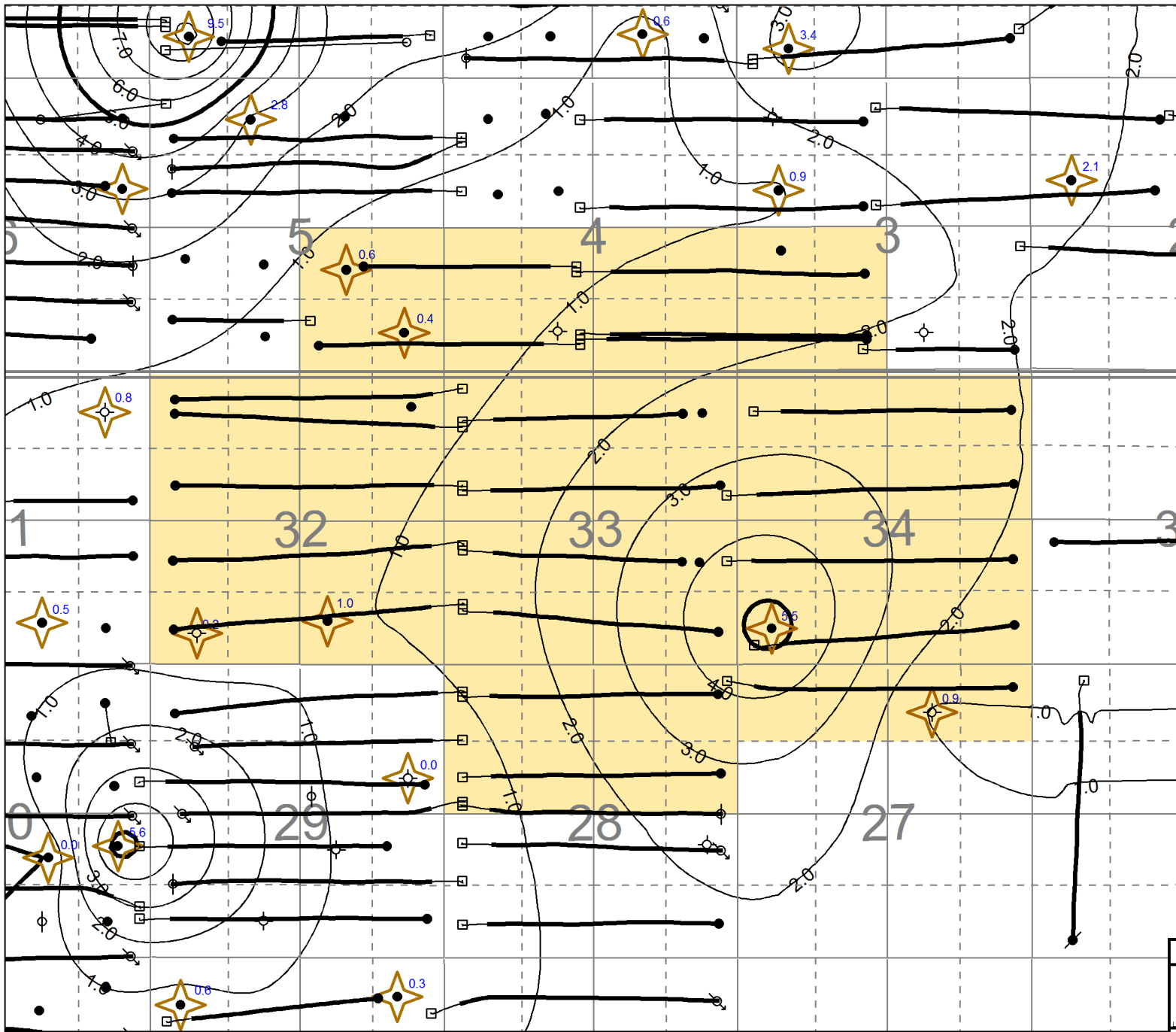
R28W1

T8

T8

T7

T7



R28W1

Appendix 17

Tundra Oil & Gas Partnership	
PROPOSED EWART UNIT 10	
Middle Bakken k*h@0.5mD CO, CI=1.0mD*m	
Core points starred and values posted	
<small>gEO SCOUT</small>	<small>Scale = 1:31756</small>



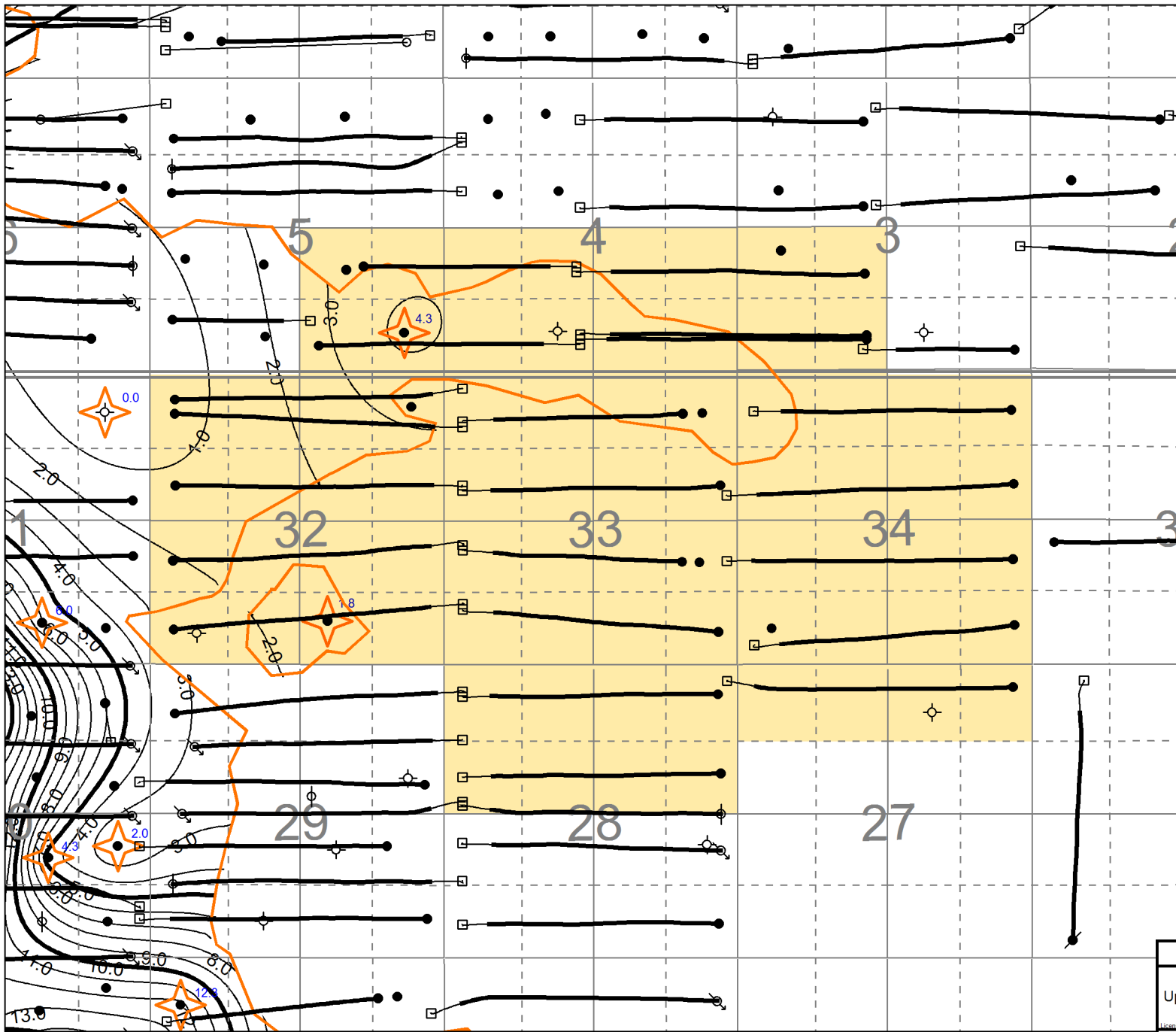
R28W1

T8

T8

T7

T7



R28W1

Appendix 18

Tundra Oil & Gas Partnership		
PROPOSED EWART UNIT 10		
Upper Lyleton A $k^*h@1.0mD$ CO, CI=1.0mD*m		
Core points starred and values posted		
<small>gOSCOUT</small>	<small>Rev. Sheet</small>	<small>Date: 2015-07-22</small>
<small>Scale: 1:11750</small>	<small>Project: Suncor Daily 2015 Expansion</small>	



R28W1

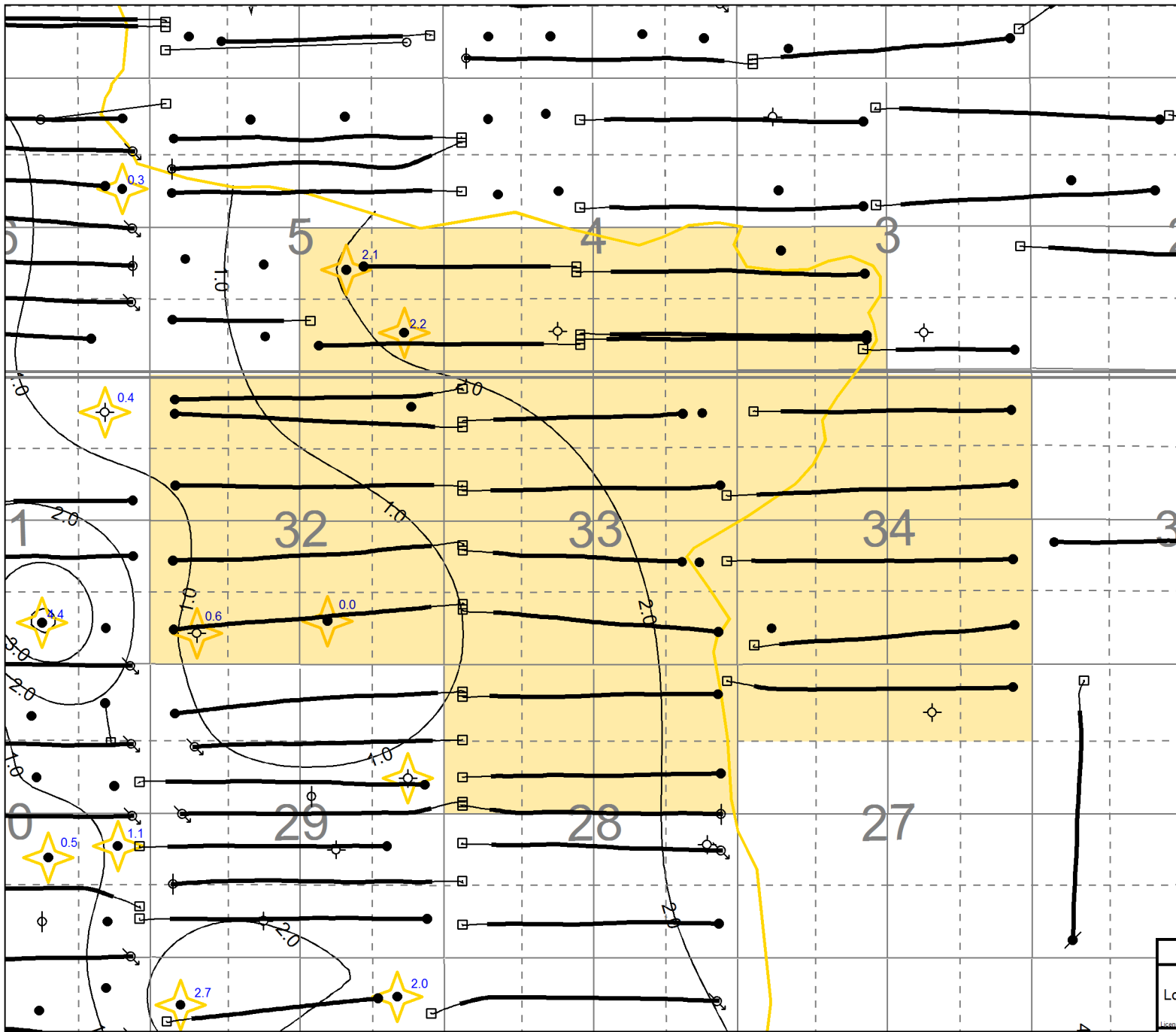
T8

T8

T7

T7

R28W1



Appendix 19

Tundra Oil & Gas Partnership	
PROPOSED EWART UNIT 10	
Lower Lyleton A k*h@1.0mD CO, CI=1.0mD*m	
Core points starred and values posted	
gEO SCOUT	Scale = 1:31750
Rev: 001	Date: 2015/07/27
Project: Sigclair Day 2015 Expansion	



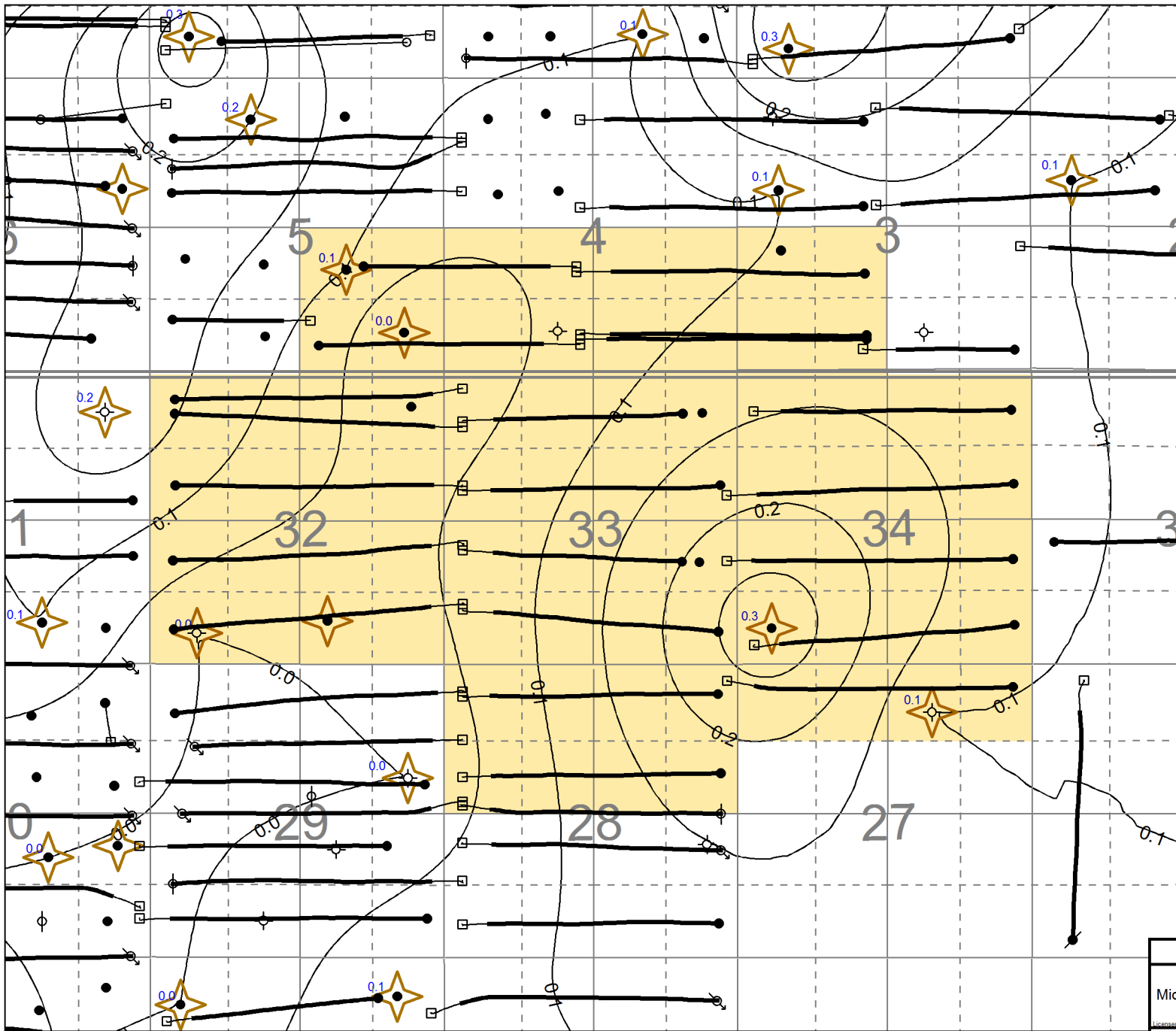
R28W1

T8

T8

T7

T7



R28W1

Appendix 21

Tundra Oil & Gas Partnership	
PROPOSED EWART UNIT 10	
Middle Bakken $\phi^*h@0.5mD$ CO, CI=0.05 ϕ^*m	
Core points starred and values posted	
gSCOUT	Scale = 1:31250
By: Hec344	Date: 2/15/2022
Project: Sigsbee Daily 2015 Extension	



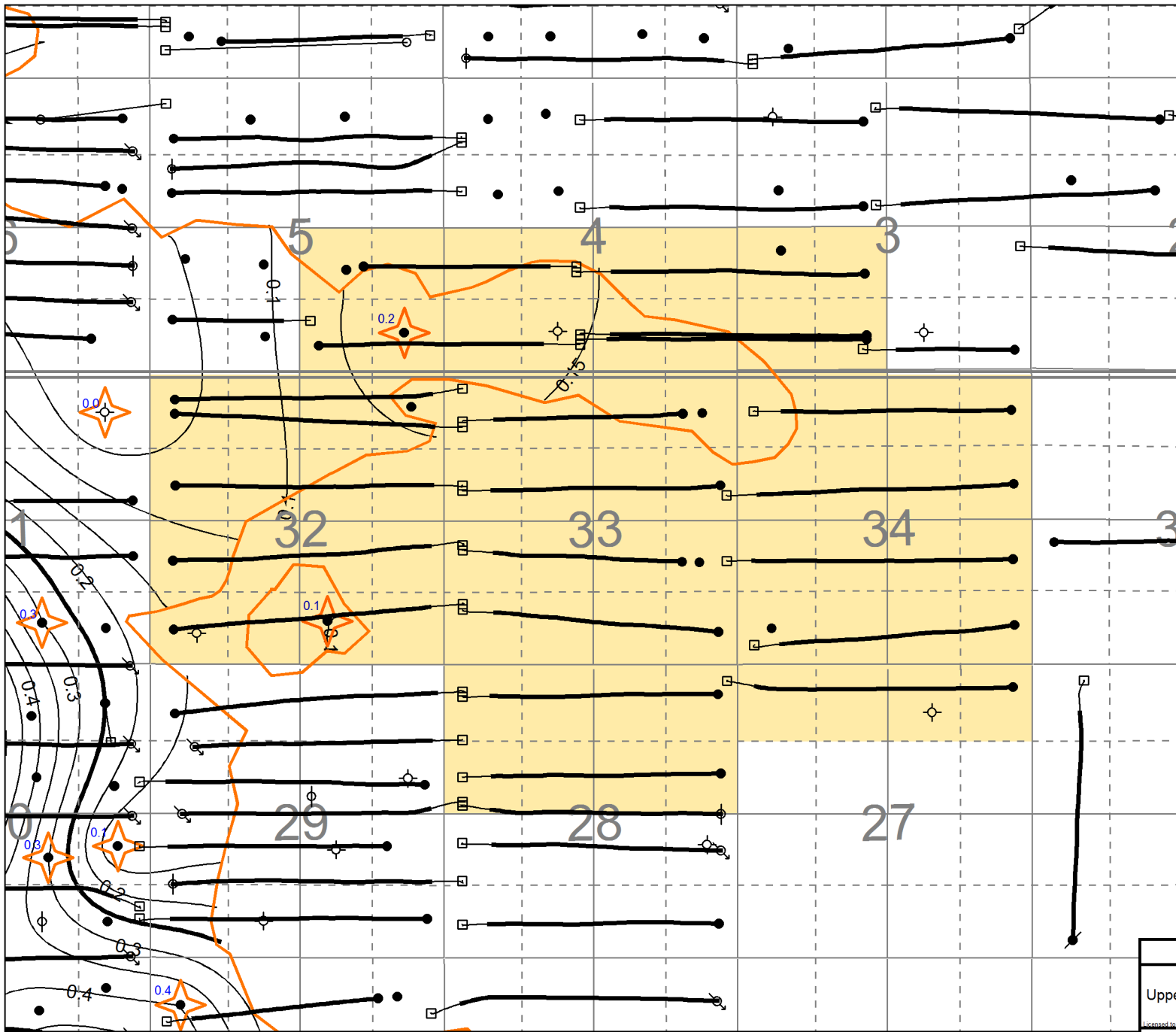
R28W1

T8

T8

T7

T7



R28W1

Appendix 22

Tundra Oil & Gas Partnership	
PROPOSED EWART UNIT 10	
Upper Lyleton A $\phi_i^*h@1.0mD$ CO, CI=0.05 ϕ_i^*m	
Core points starred and values posted	
gSCOUT	Scale = 1:31750
Project - Ripolar Daily 2015 Expansion	Date - 2015/07/22



R28W1

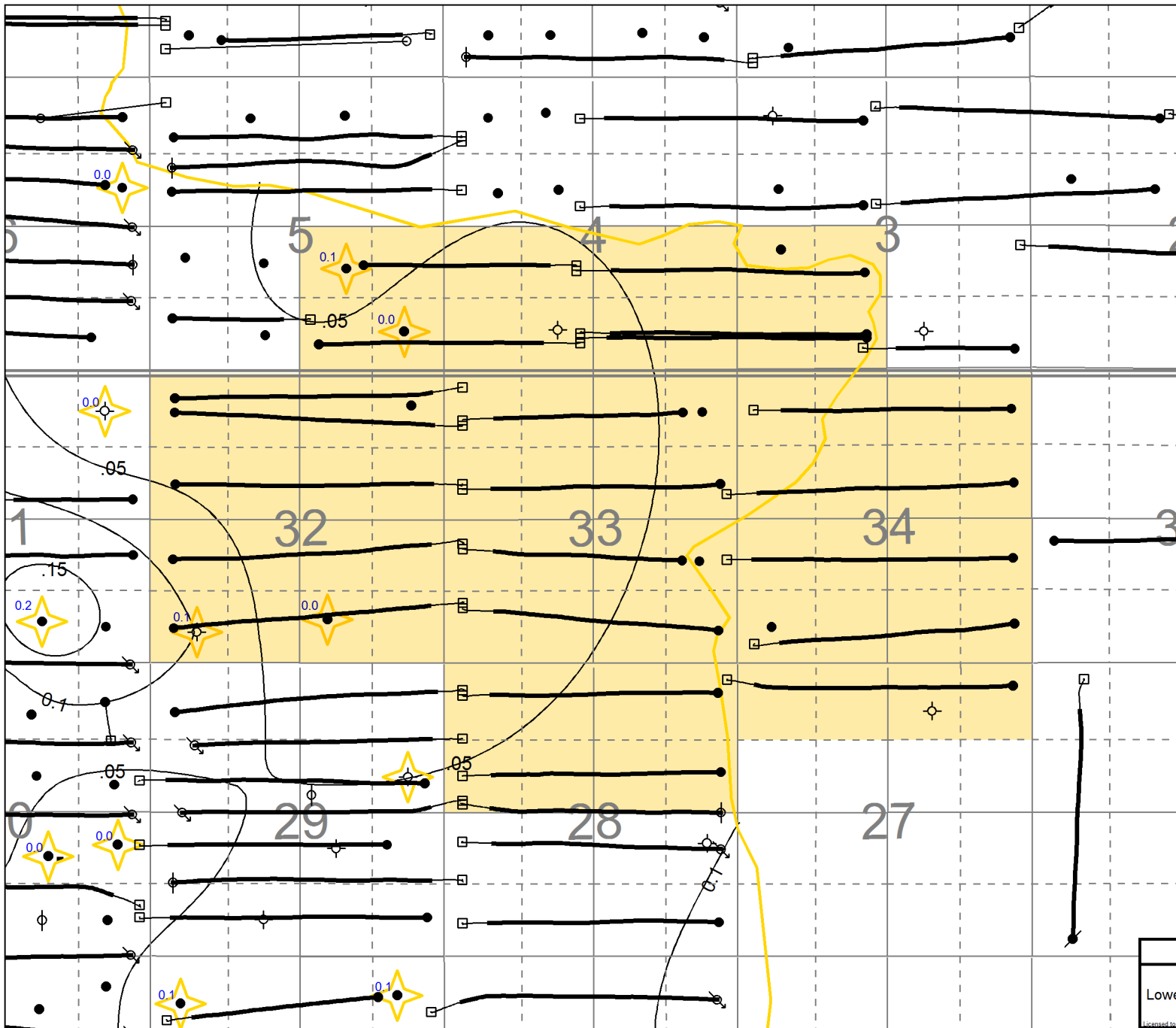
T8

T8

T7

T7

R28W1



Appendix 23

Tundra Oil & Gas Partnership	
PROPOSED EWART UNIT 10	
Lower Lyleton A $\phi_i^*h@1.0mD$ CO, $CI=0.05\phi_i^*m$	
Core points starred and values posted	
<small>Licensee to: Tundra Oil & Gas Partnership</small>	<small>Date: 2015/07/22</small>
<small>gSCOUT</small>	<small>Scale = 1:31750</small>
<small>Project: Ripolar Daily 2015 Expansion</small>	



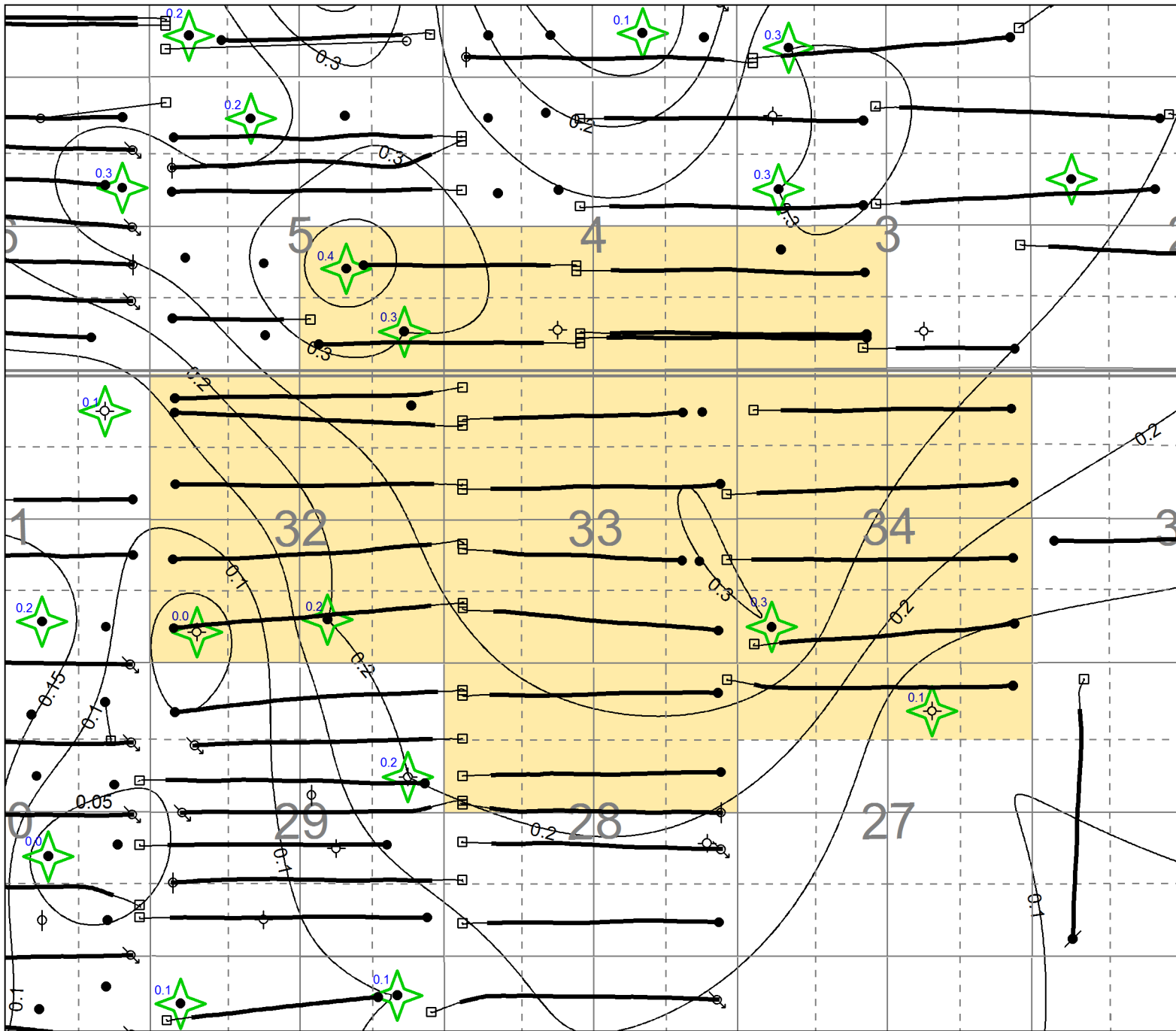
R28W1

T8

T8

T7

T7



R28W1

Appendix 24

Tundra Oil & Gas Partnership	
PROPOSED EWART UNIT 10	
Lyleton B $\phi_i \cdot h @ 0.5mD$ CO, CI=0.05 $\phi_i \cdot m$	
Core points starred and values posted	
gPOSCOUT	Scale = 1:111750
Rev: 04/2015	Date: 2015/07/22
Project: Soudan P10y 2015 Expansion	



R29

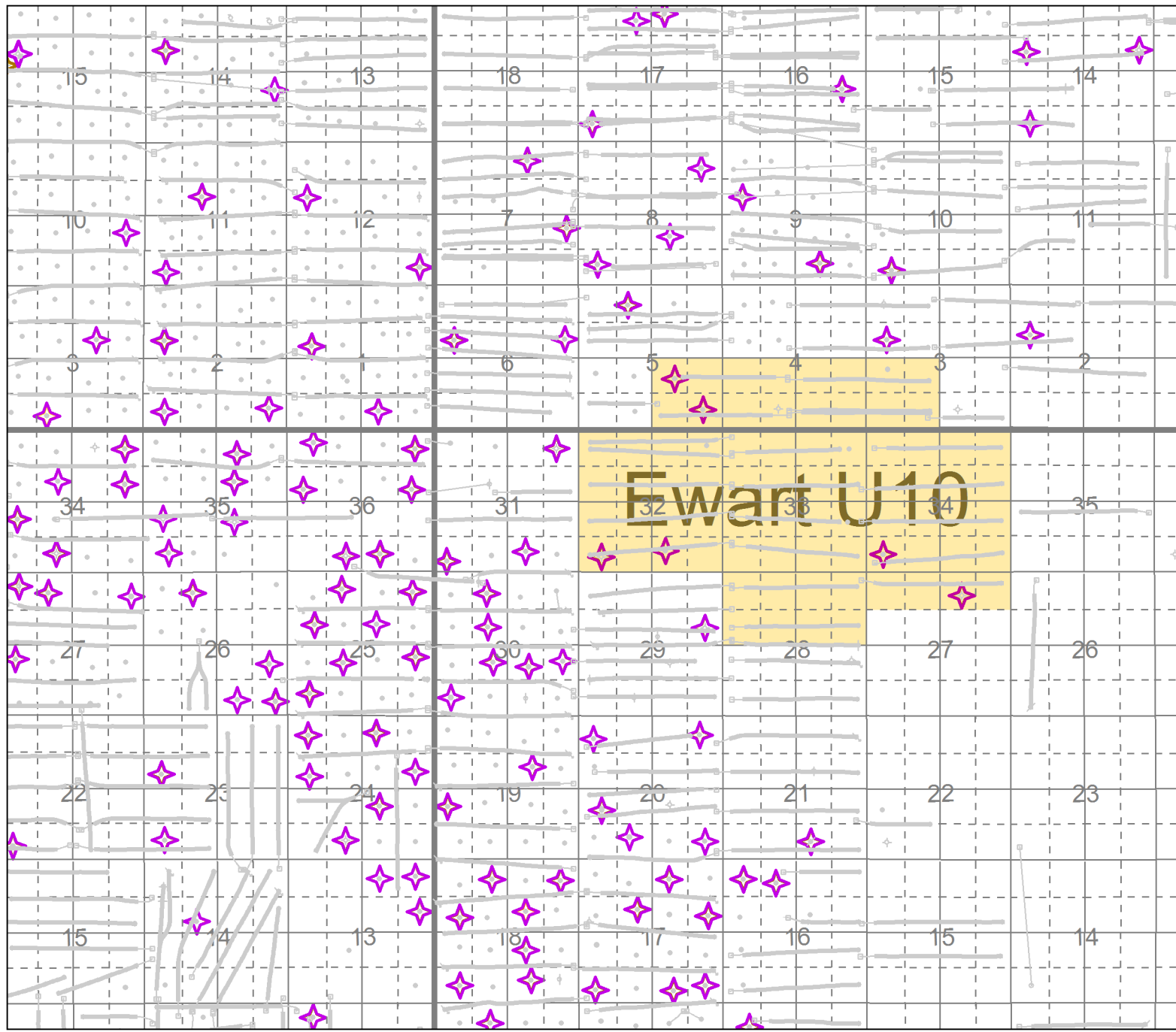
R28W1

T8

T8

T7

T7



Ewart U10

Appendix 25

Tundra Oil & Gas Partnership	
PROPOSED EWART UNIT 10	
Area Wells and Cored Wells	
Starred wells have Bakken/Lyleton Core	
By: <input type="checkbox"/> Tundra Oil & Gas Partnership	Date: 2015/07/22
Scale = 1:50,000	Project: Singing Dolly 2015 Expansion

R29

R28W1