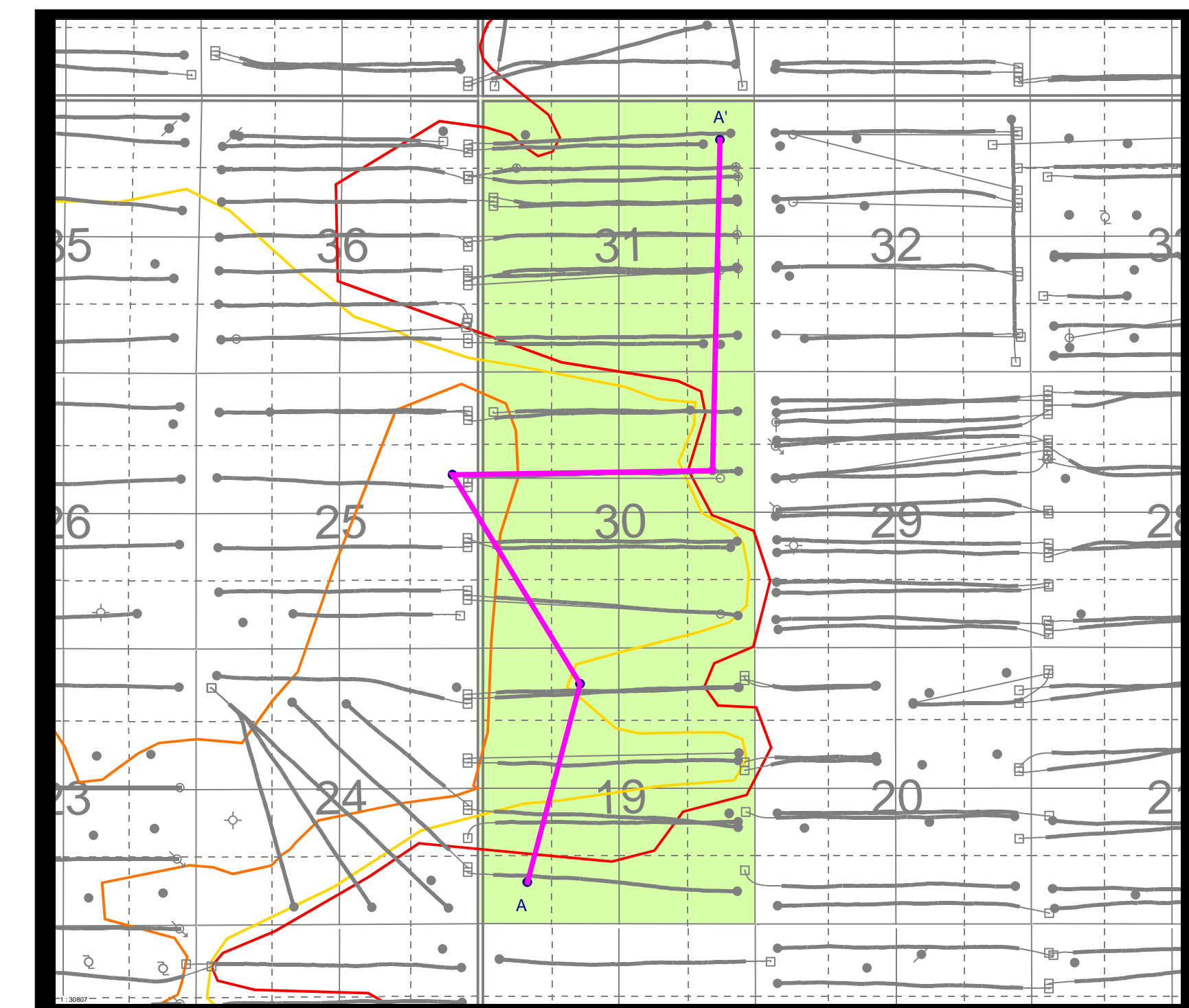
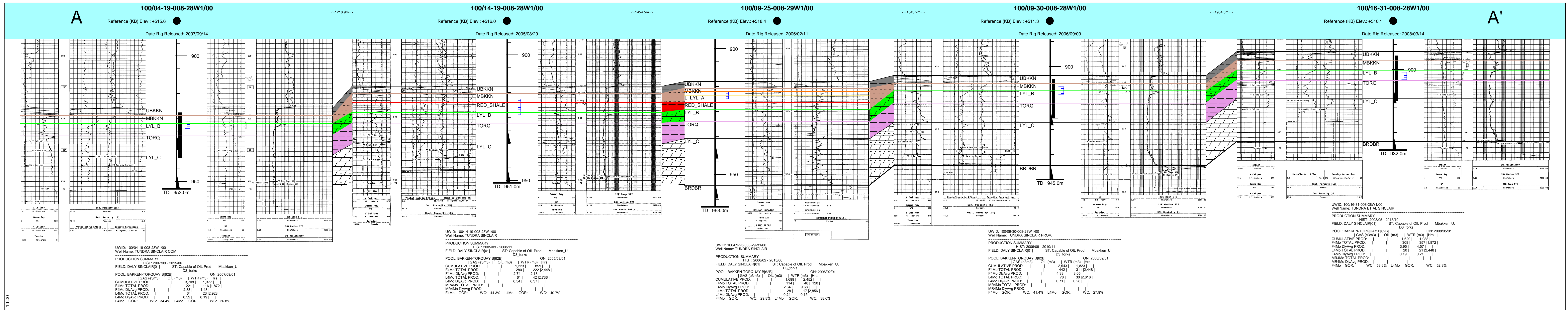


Proposed Sinclair Unit No. 17

Application for Enhanced Oil Recovery Waterflood Project

LIST OF APPENDICES

Appendix 1	Sinclair Unit No. 17 - Structural Cross Section
Appendix 2	Sinclair Unit No. 17 – Offsetting Units
Appendix 3	Sinclair Unit No. 17 – Upper Bakken Isopach
Appendix 4	Sinclair Unit No. 17 – Middle Bakken Isopach
Appendix 5	Sinclair Unit No. 17 – Upper Lyleton A Isopach
Appendix 6	Sinclair Unit No. 17 – Lower Lyleton A Isopach
Appendix 7	Sinclair Unit No. 17 - Red Shale Isopach
Appendix 8	Sinclair Unit No. 17 - Lyleton B Isopach
Appendix 9	Sinclair Unit No. 17 – Torquay Isopach
Appendix 10	Sinclair Unit No. 17 – Upper Bakken Structure
Appendix 11	Sinclair Unit No. 17 – Middle Bakken Structure
Appendix 12	Sinclair Unit No. 17 – Upper Lyleton A Structure
Appendix 13	Sinclair Unit No. 17 – Lower Lyleton A Structure
Appendix 14	Sinclair Unit No. 17 - Red Shale Structure
Appendix 15	Sinclair Unit No. 17 - Lyleton B Structure
Appendix 16	Sinclair Unit No. 17 – Torquay Structure
Appendix 17	Sinclair Unit No. 17 – Middle Bakken k-h
Appendix 18	Sinclair Unit No. 17 – Upper Lyleton A k-h
Appendix 19	Sinclair Unit No. 17 – Lower Lyleton A k-h
Appendix 20	Sinclair Unit No. 17 – Lyleton B k-h
Appendix 21	Sinclair Unit No. 17 – Middle Bakken phi-h
Appendix 22	Sinclair Unit No. 17 – Upper Lyleton A phi-h
Appendix 23	Sinclair Unit No. 17 – Lower Lyleton A phi-h
Appendix 24	Sinclair Unit No. 17 – Lyleton B phi-h
Appendix 25	Core Data Coverage



Appendix No. 1

Tundra Oil & Gas Partnership

PROPOSED SINCLAIR UNIT No. 17

Cross Section A - A'

Licensed to: Tundra Oil and Gas Ltd

Date: 2015/05/31 By: Hawker

Drawn: Sae Leung Ref: 0.0 m Scale: 1:500

Entered: From UBKKN to TD



R29

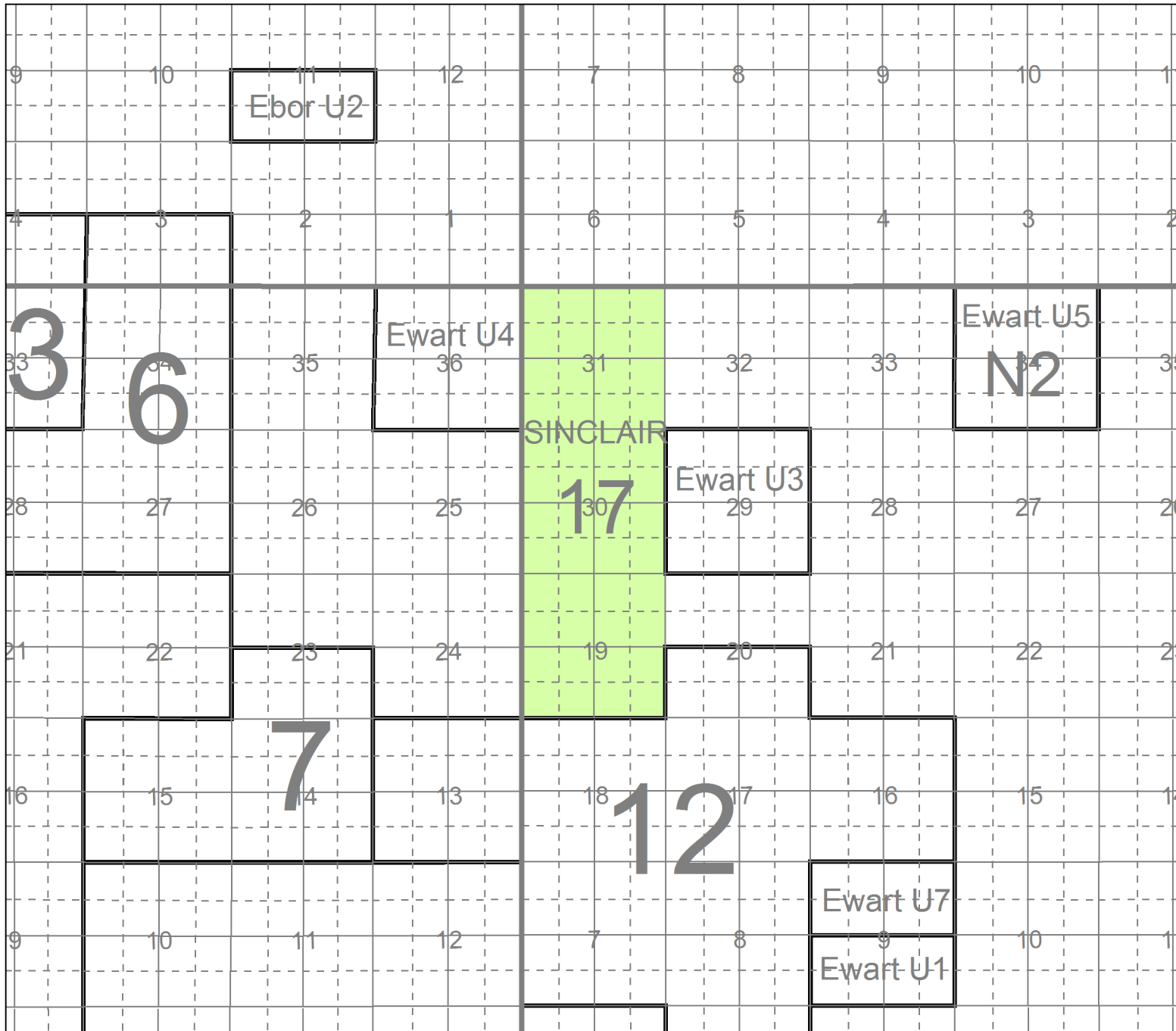
R28W1

T9

T9

T8

T8



R29

R28W1

Appendix No. 2

Tundra Oil & Gas Partnership	
PROPOSED SINCLAIR UNIT No. 17	
Proposed Sinclair Unit No. 17 Boundary	
Offsetting Units	
<small>Licensed to: Tundra Oil & Gas Partnership</small>	<small>Date: 2015/09/26</small>
<small>By: Hankard</small>	<small>Scale: 1:50000</small>
<small>g95SCOUT</small>	<small>Project: Sinclair DnsV 2014 Extension</small>



R29

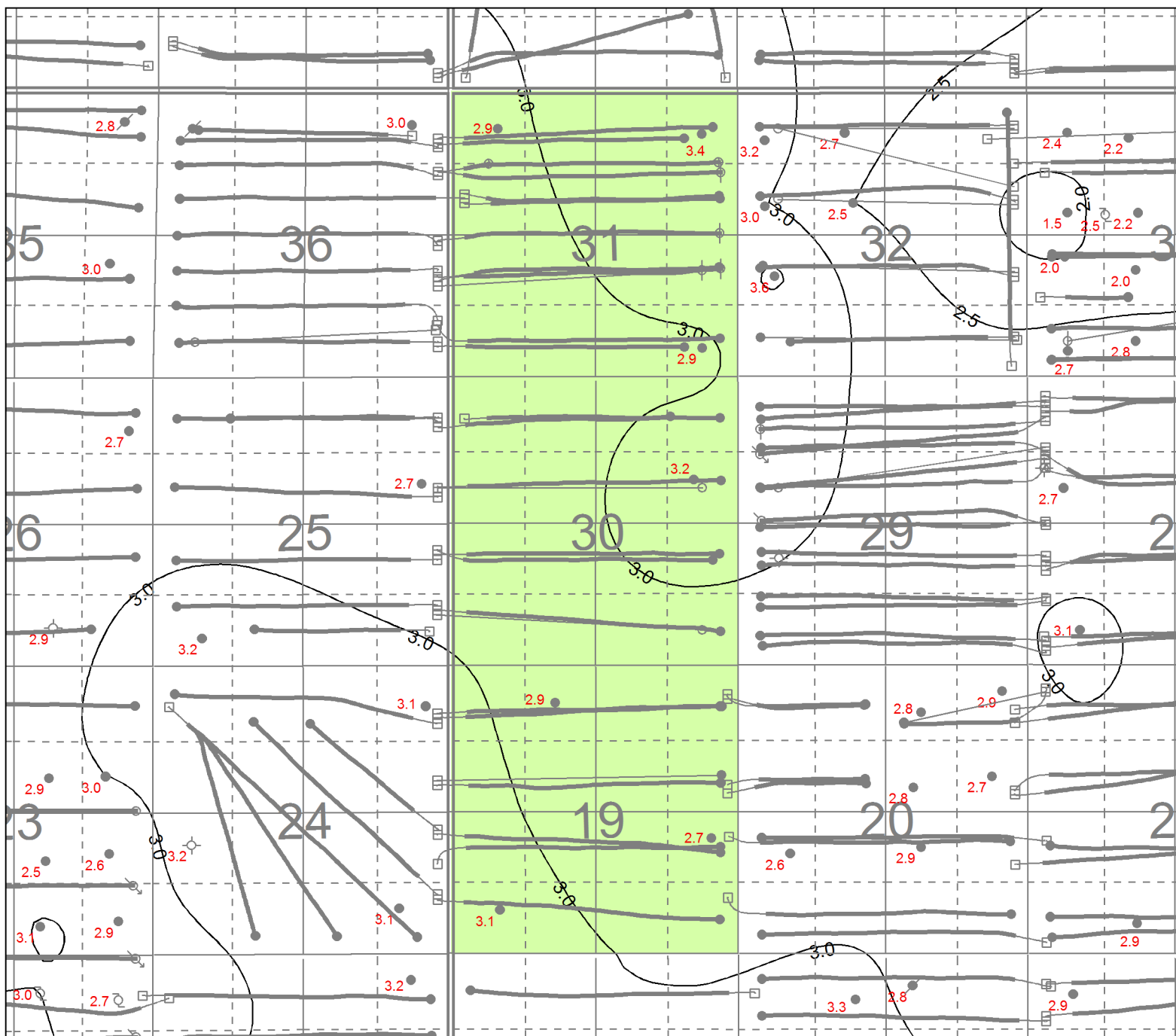
R28W1

T9

T9

T8

T8



R29

R28W1

Appendix No. 3

Tundra Oil & Gas Partnership	
PROPOSED SINCLAIR UNIT No. 17	
Upper Bakken Isopach	
CI=0.5m, Well Isopach Values in Red	
gROSCOUT	By: [redacted] Date: 2015/09/27
Scale: 1:33212	Project: Sinclair Daily 2015 Extension



R29

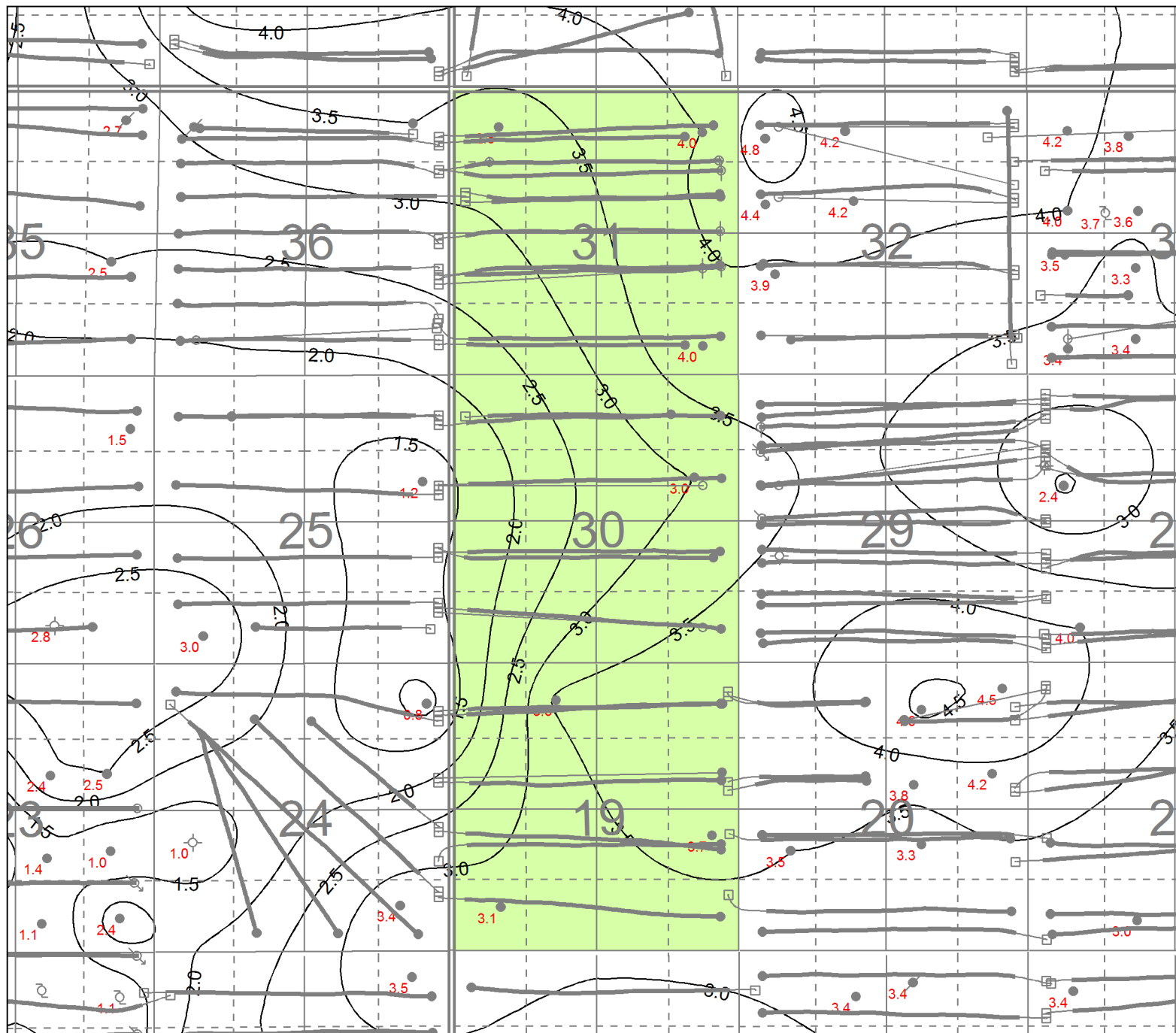
R28W1

T9

T9

T8

T8



R29

R28W1

Appendix No. 4

Tundra Oil & Gas Partnership		
PROPOSED SINCLAIR UNIT No. 17		
Middle Bakken Isopach		
CI=0.5m Well Isopach Values in Red		
gROSCOUT	By: [unclear]	Date: 2015/09/27
	Scale: 1:33312	Project: Sinclair Daily 2015 Extension



R29

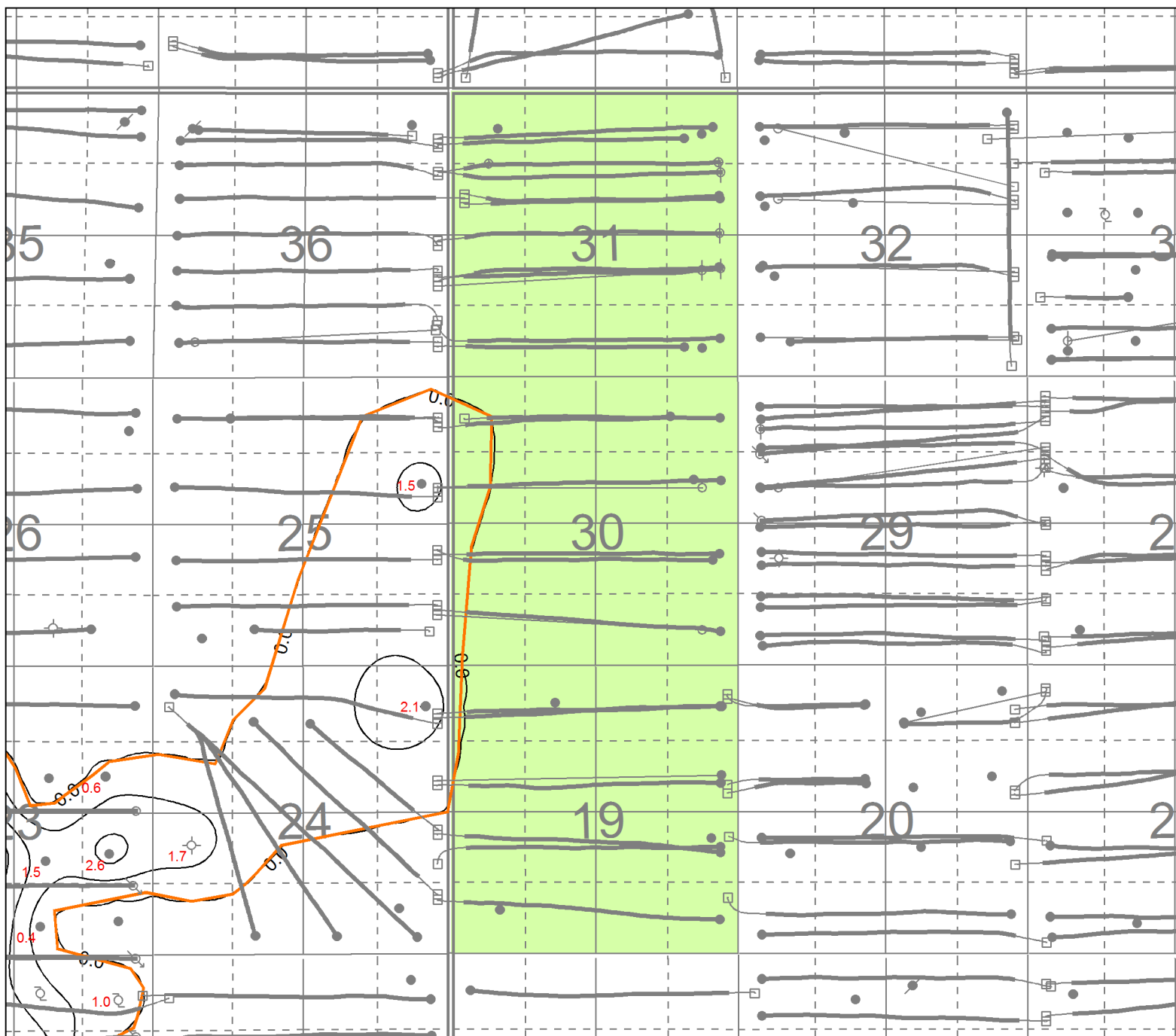
R28W1

T9

T9

T8

T8



R29

R28W1

Appendix No. 5

Tundra Oil & Gas Partnership	
PROPOSED SINCLAIR UNIT No. 17	
Upper Lyleton A Isopach & Zero Edge	
CI=0.5m, Well Isopach Values in Red	
gROSCOUT	By: [unclear] Date: 2015/09/27
Scale: 1:33312	Project: Sinclair Daily 2015 Extension



R29

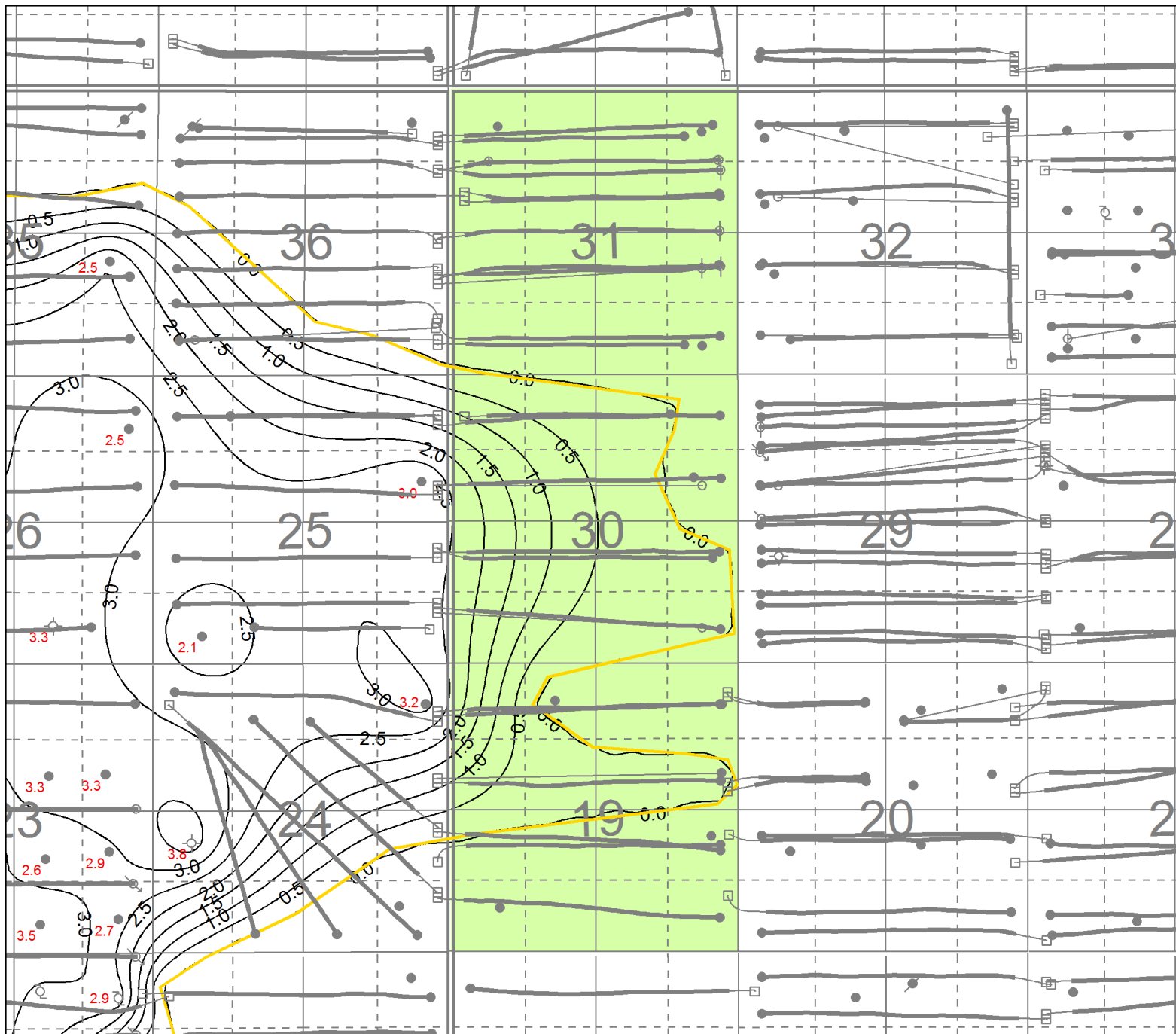
R28W1

T9

T9

T8

T8



R29

R28W1

Appendix No. 6

Tundra Oil & Gas Partnership
PROPOSED SINCLAIR UNIT No. 17
Lower Lyleton A Isopach & Zero Edge
CI=0.5m, Well Isopach Values in Red

gROSCOUT	By: [unclear]	Date: 2015/09/27
Scale: 1:33312	Project: Sinclair Daily 2015 Extension	



R29

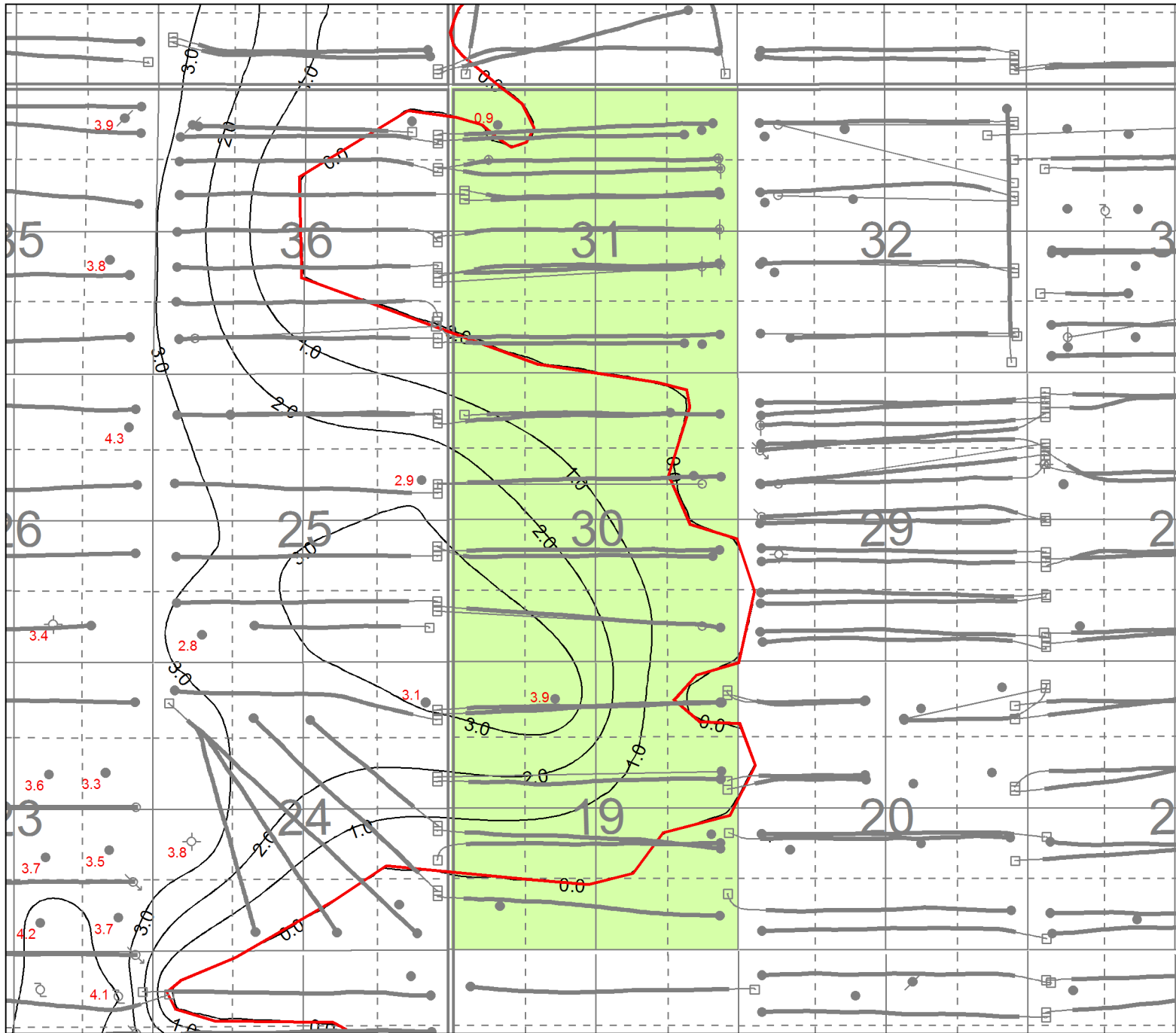
R28W1

T9

T9

T8

T8



R29

R28W1

Appendix No. 7

Tundra Oil & Gas Partnership	
PROPOSED SINCLAIR UNIT No. 17	
Red Shale Isopach & Zero Edge	
CI=0.5m, Well Isopach Values in Red	
gROSCOUT	By: [blank] Date: 2015/09/27
Scale: 1:33312	Project: Sinclair Dairy 2015 Expansion



R29

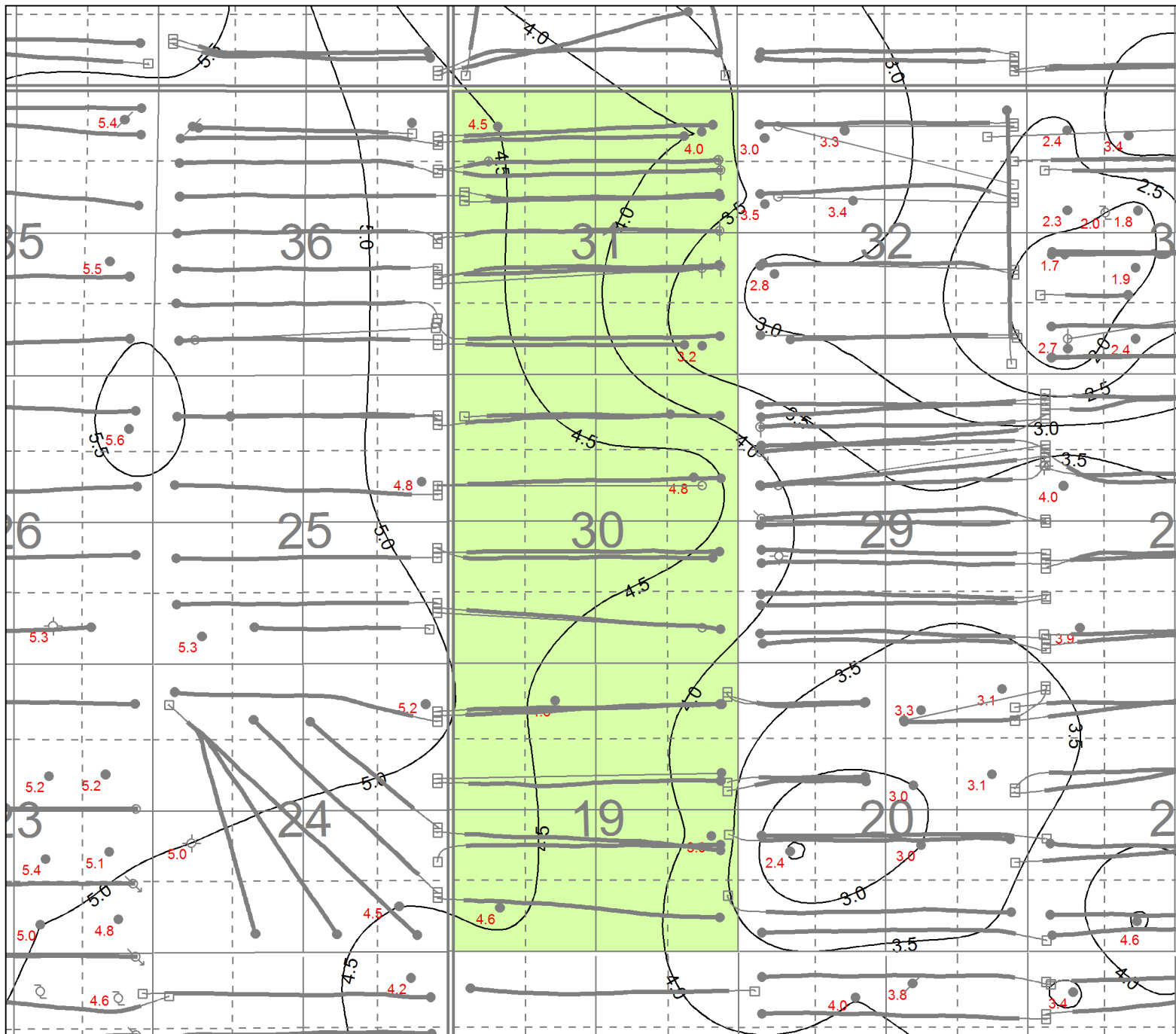
R28W1

T9

T9

T8

T8



R29

R28W1

Appendix No. 8

Tundra Oil & Gas Partnership			
PROPOSED SINCLAIR UNIT No. 17			
Lyleton B Isopach			
CI=0.5m, Well Isopach Values in Red			
gROSCOUT	By: [unclear]	Date: 2015/09/11	
	Scale: 1:33312	Project: Sinclair Doby 2015 Expansion	



R29

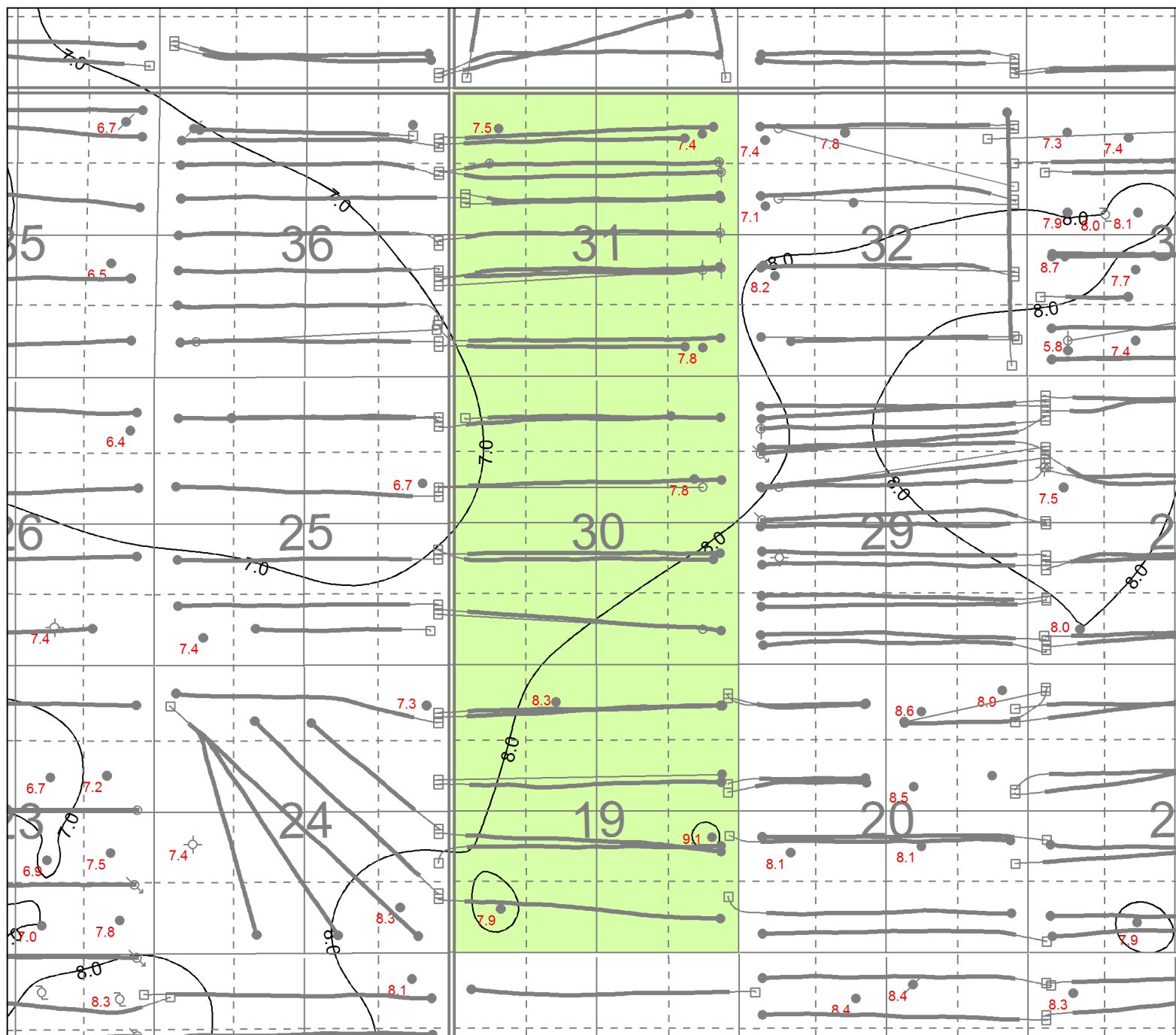
R28W1

T9

T9

T8

T8



R29

R28W1

Appendix No. 9

Tundra Oil & Gas Partnership
PROPOSED SINCLAIR UNIT No. 17
Torquay Shale Isopach
CI=0.5m, Well Isopach Values in Red

gROSCOUT	By: [unclear]	Date: 2015/09/11
Scale: 1:33312	Project: Sinclair Doby 2015 Expansion	



R29

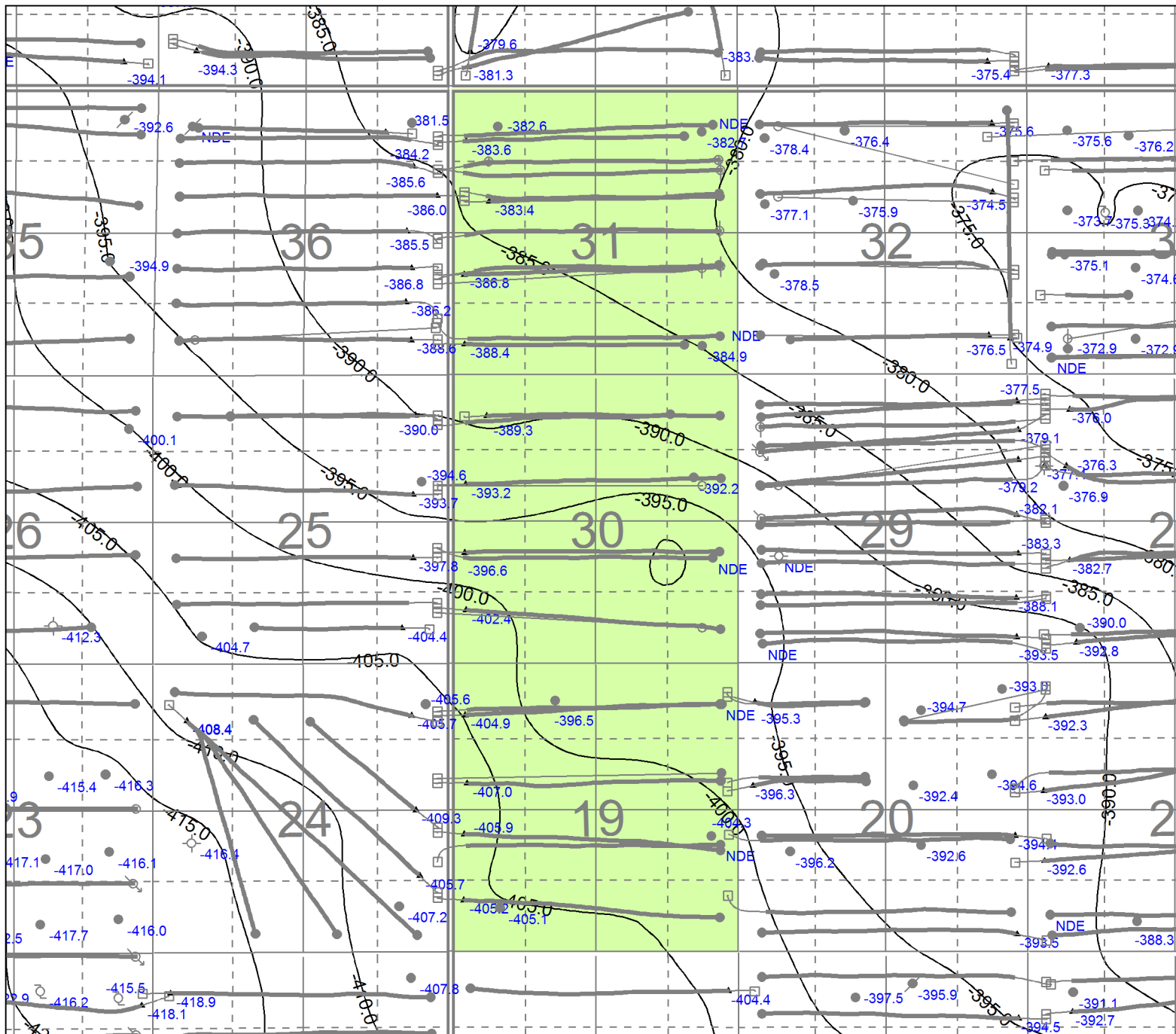
R28W1

T9

T9

T8

T8



R29

R28W1

Appendix No. 10

Tundra Oil & Gas Partnership		
PROPOSED SINCLAIR UNIT No. 17		
Upper Bakken Shale Structure		
CI=5.0m, Well Elevation Values in Blue		
Legend: Tundra Oil & Gas Partnership	By: [blank]	Date: 2015/09/27
gPSCOUT	Scale: 1:33312	Project: Sinclair Doby 2015 Economic



R29

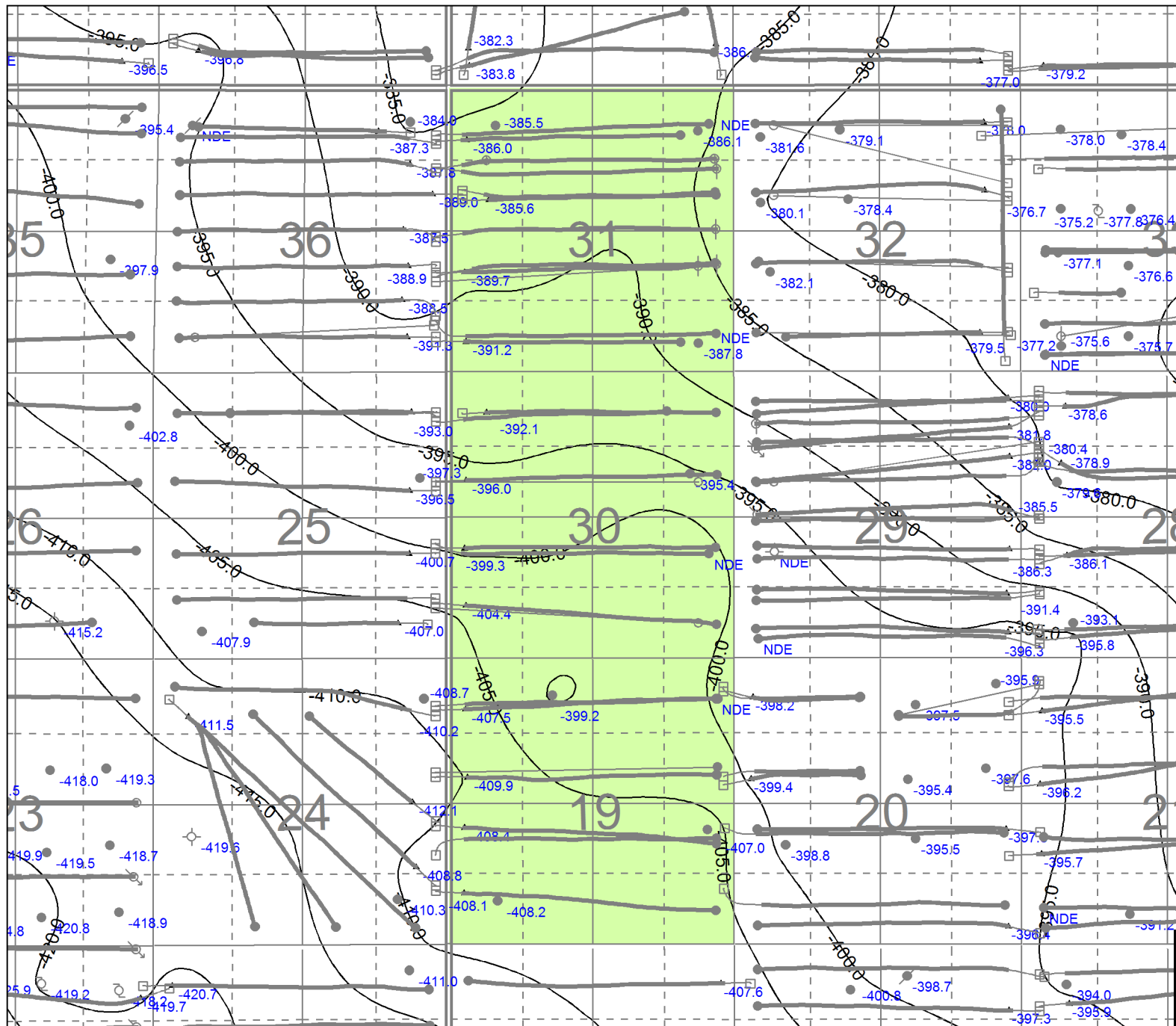
R28W1

T9

T9

T8

T8



R29

R28W1

Appendix No. 11

Tundra Oil & Gas Partnership
PROPOSED SINCLAIR UNIT No. 17
Middle Bakken Structure
CI=5.0m, Well Elevaton Values in Blue

gPOSCOUT	By: [Blank]	Date: 2015/09/27
	Scale: 1:33312	Project: Sinclair Dohy 2015 Examin



R29

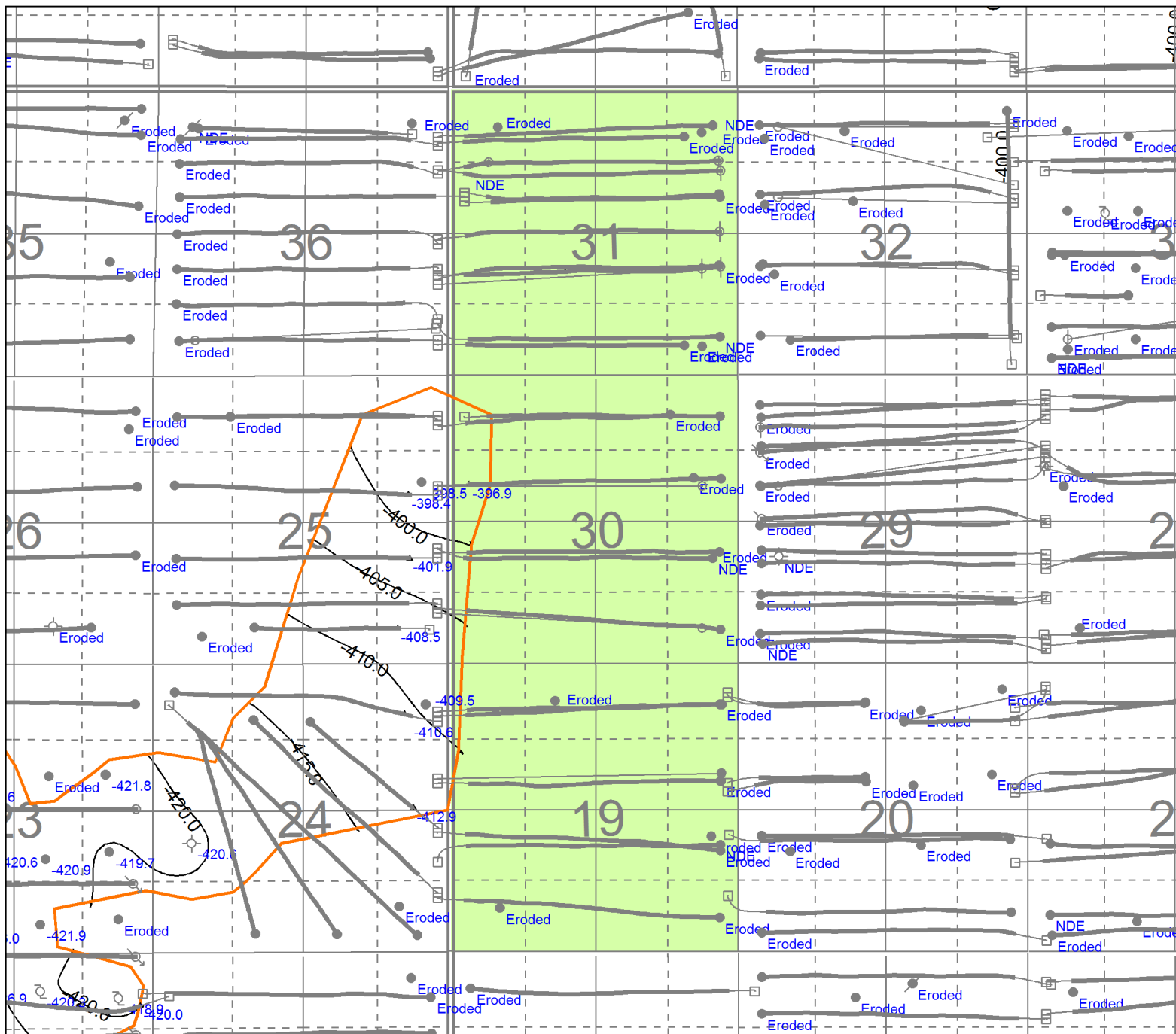
R28W1

T9

T9

T8

T8



R29

R28W1

Appendix No. 12

Tundra Oil & Gas Partnership	
PROPOSED SINCLAIR UNIT No. 17	
Upper Lyleton A Structure & Zero Edge	
CI=5.0m, Well Elevaton Values in Blue	
gROSCOUT	By: [Blank]
Scale = 1:33312	Date: 2015/09/27
Project: Sinclair Dtdy 2015 Examin	



R29

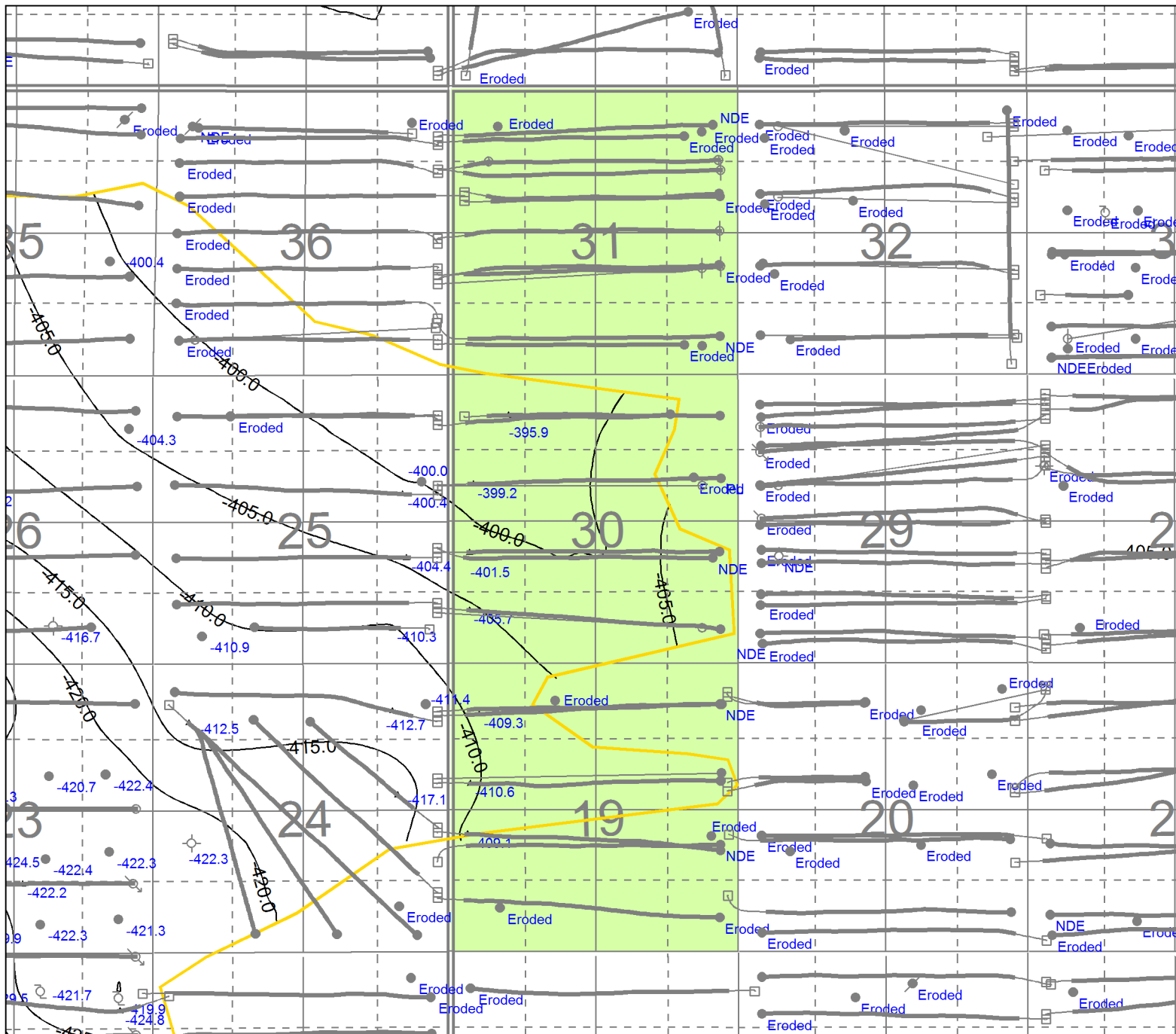
R28W1

T9

T9

T8

T8



R29

R28W1

Appendix No. 13

Tundra Oil & Gas Partnership
PROPOSED SINCLAIR UNIT No. 17
Lower Lyleton A Structure & Zero Edge
CI=5.0m, Well Elevaton Values in Blue

gPSCOUT	By: [unclear]	Date: 2015/09/27
	Scale: 1:33312	Project: Sinclair Dtdy 2015 Economic



R29

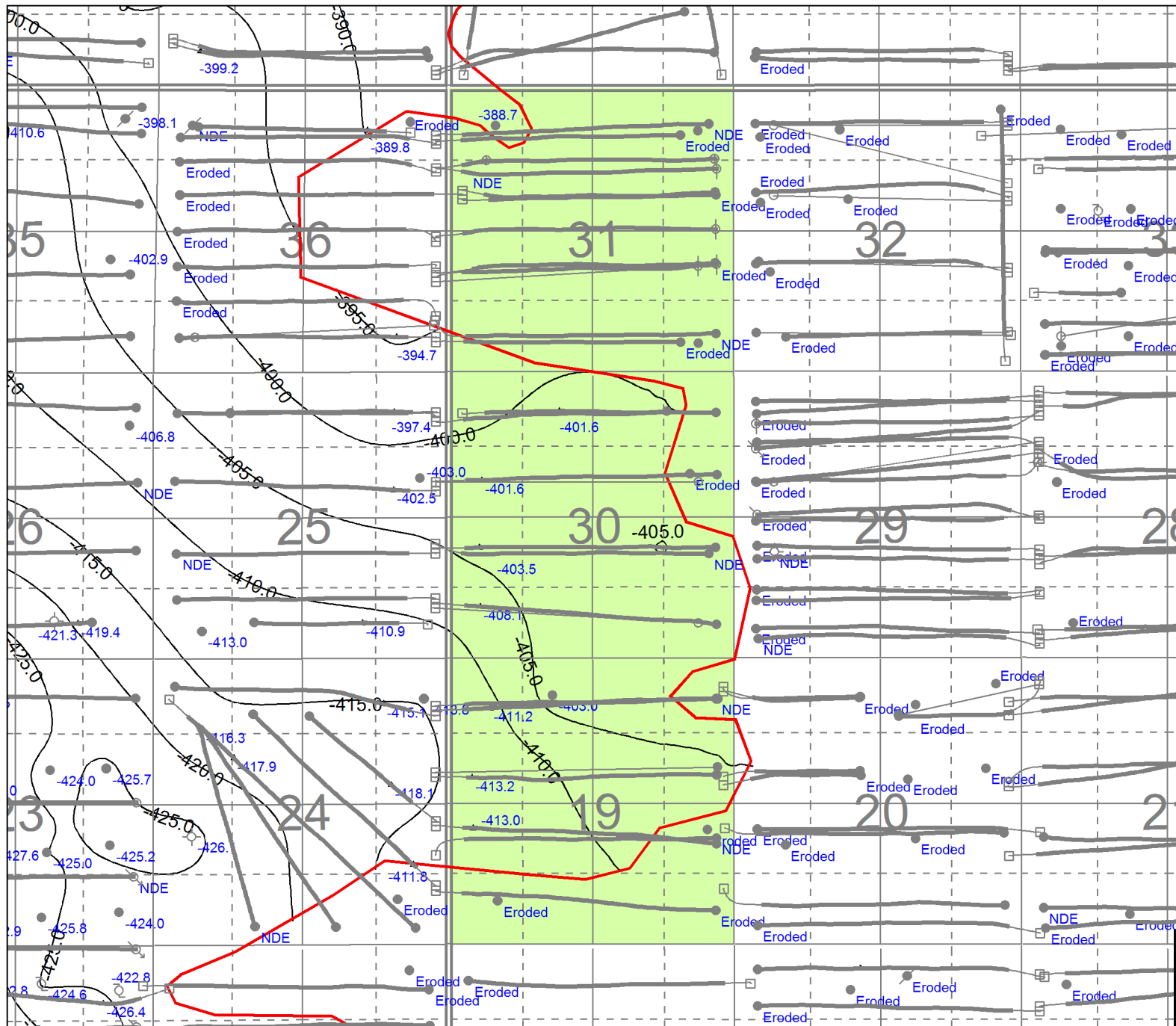
R28W1

T9

T9

T8

T8



R29

R28W1

Appendix No. 14

Tundra Oil & Gas Partnership
PROPOSED SINCLAIR UNIT No. 17
Red Shale Structure & Zero Edge
CI=5.0m, Well Elevaton Values in Blue
Legend to Tundra Oil & Gas Partnership
By: [redacted] Date: 2015/09/27
Scale: 1:33312 Project: Sinclair Dairy 2015 Expansion



R29

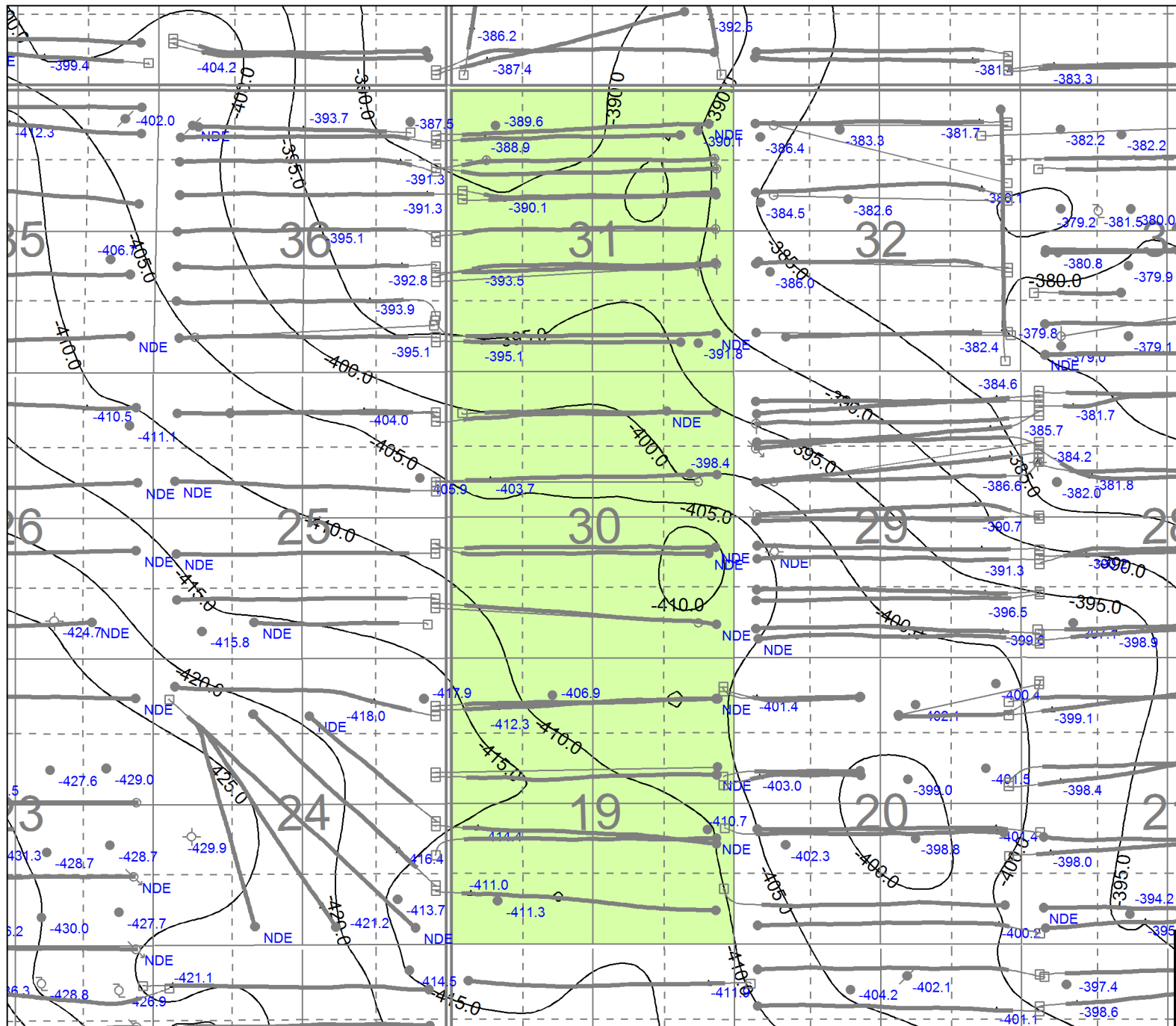
R28W1

T9

T9

T8

T8



R29

R28W1

Appendix No. 15

Tundra Oil & Gas Partnership			
PROPOSED SINCLAIR UNIT No. 17			
Lyleton B Structure			
CI=5.0m, Well Elevaton Values in Blue			
gPSCOUT	By: [blank]	Date: 2015/09/27	
	Scale: 1:33312	Project: Sinclair Dtdy 2015 Envrment	



R29

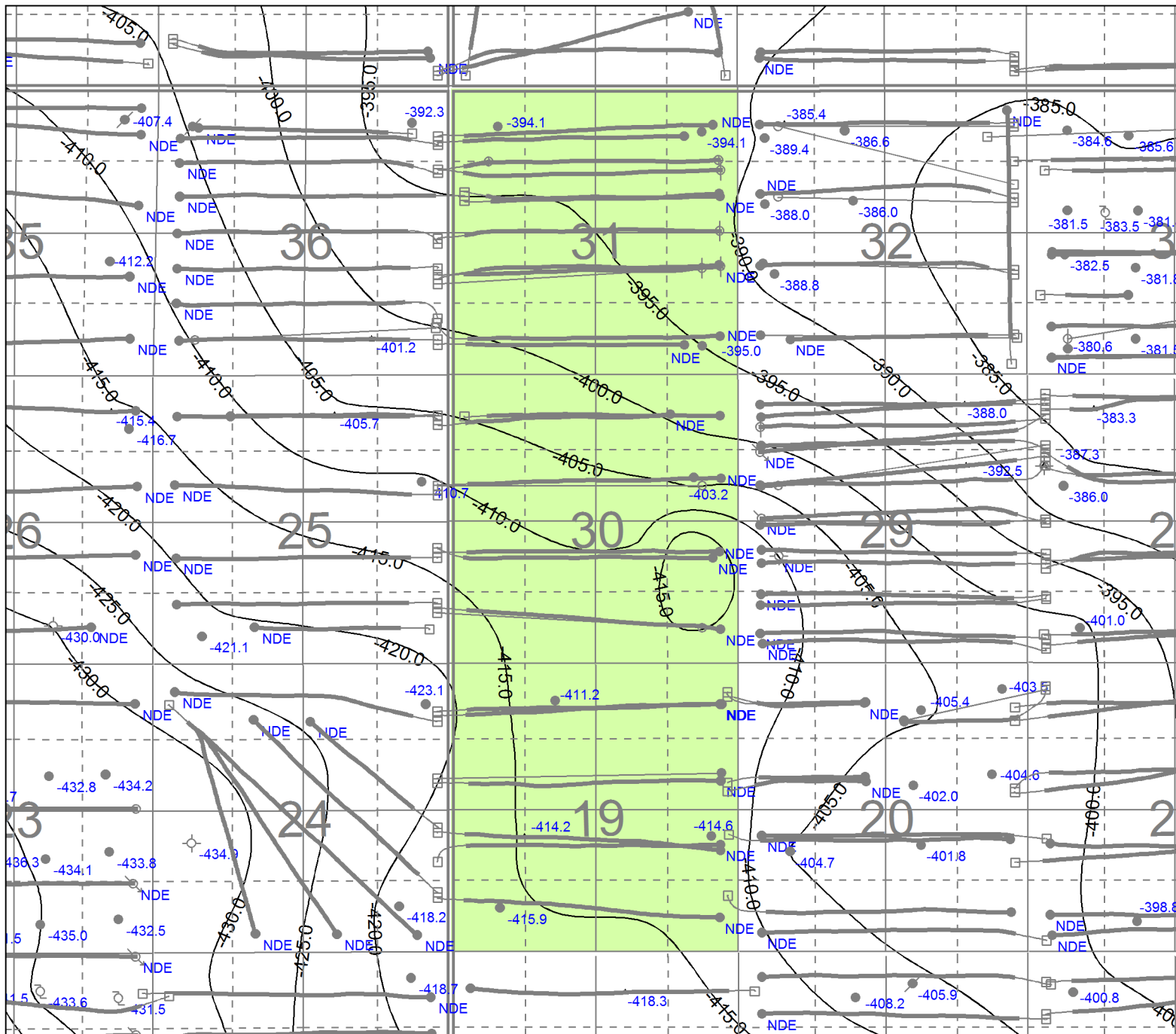
R28W1

T9

T9

T8

T8



Appendix No. 16

Tundra Oil & Gas Partnership
PROPOSED SINCLAIR UNIT No. 17
Torquay Shale Structure
CI=5.0m, Well Elevaton Values in Blue

gPSCOUT	By: [Name]	Date: 2015/09/27
	Scale: 1:33312	Project: Sinclair Dairy 2015 Expansion

R29

R28W1



R29

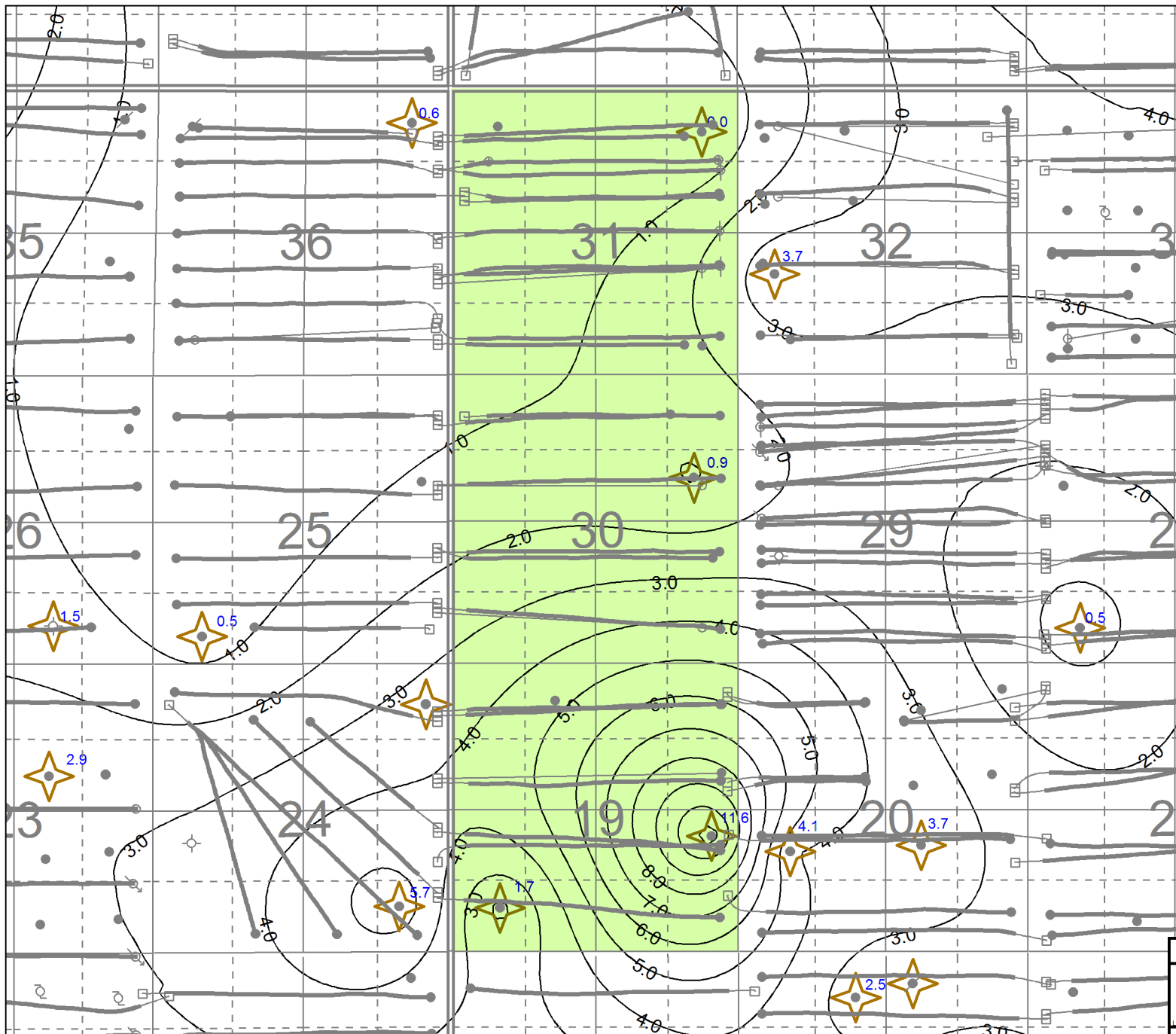
R28W1

T9

T9

T8

T8



R29

R28W1

Appendix No. 17

Tundra Oil & Gas Partnership	
PROPOSED SINCLAIR UNIT No. 17	
Middle Bakken k*h@0.5mD CO ₂ CI=1.0mD*m	
Core points starred and values posted	
gESCOUT	Scale = 1:32112
Rev: Hatched	Date: 20150801
Project: Sinclair July 2015 Expansion	



R29

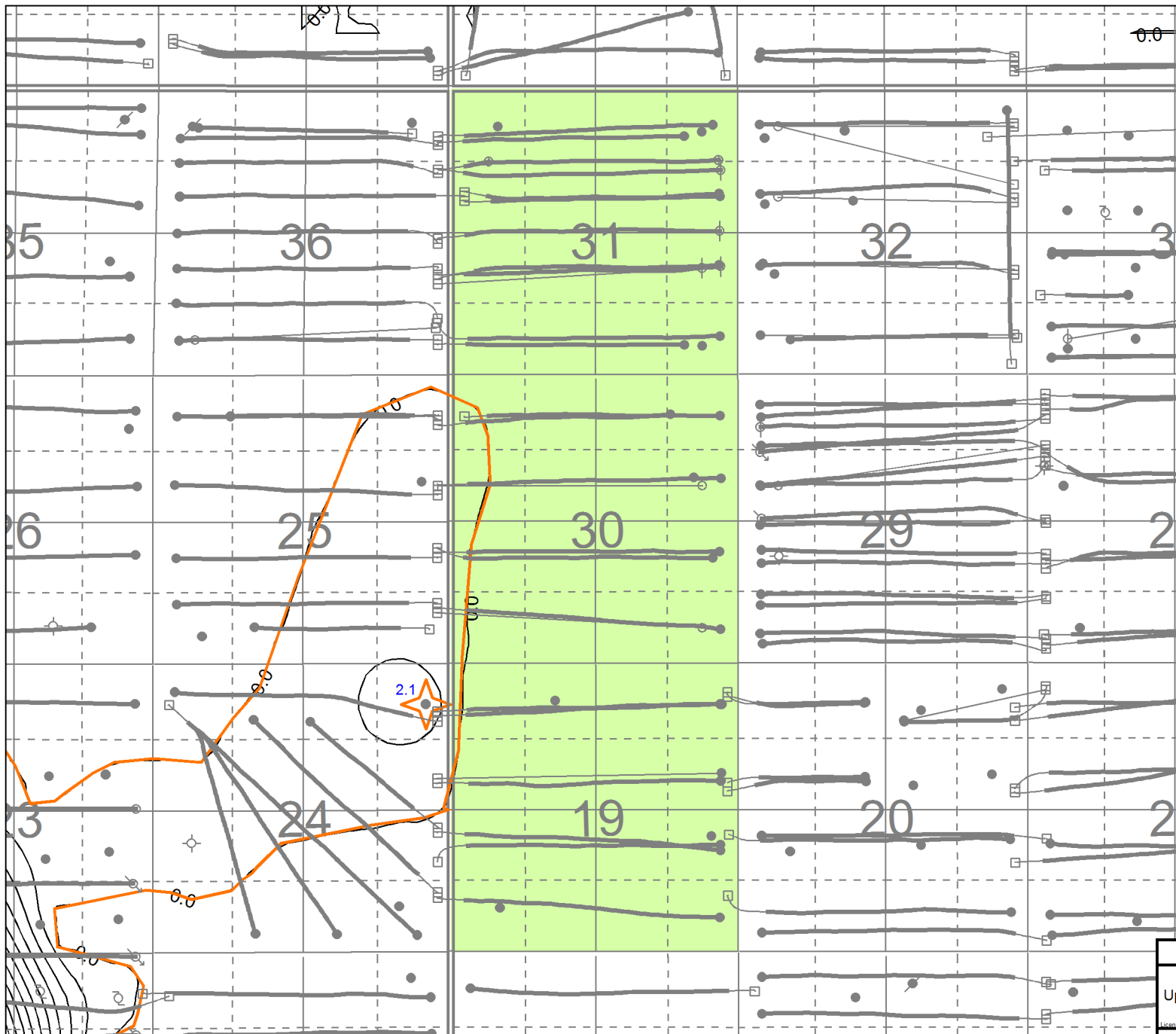
R28W1

T9

T9

T8

T8



R29

R28W1

Appendix No. 18

Tundra Oil & Gas Partnership	
PROPOSED SINCLAIR UNIT No. 17	
Upper Lyleton A $k^*h@0.5mD$ CO, CI=1.0mD*m	
Core points starred and values posted	
gSCOUT	Scale = 1:25000
gSCOUT	Project: Sinclair Daily 2015 Expansion



R29

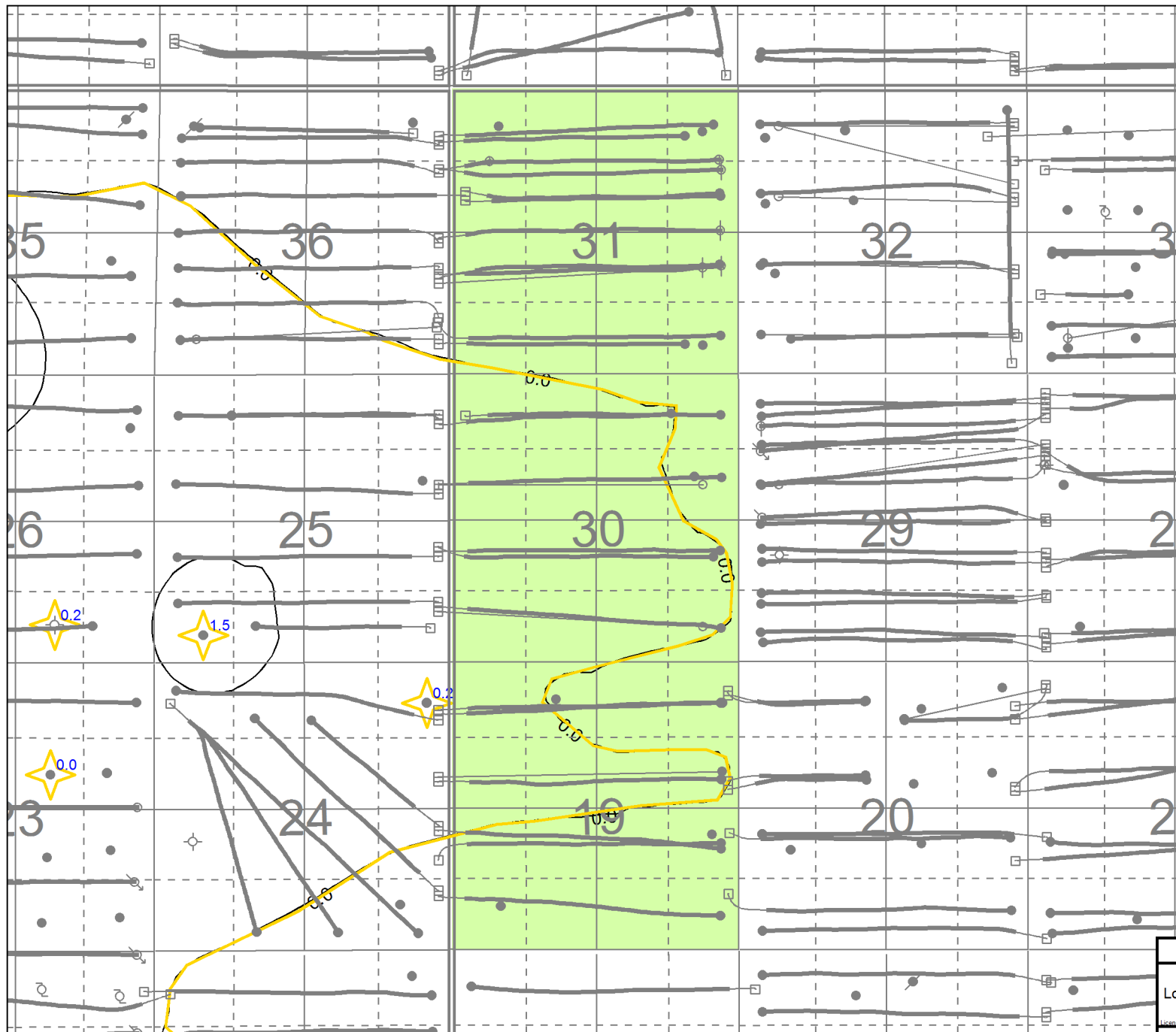
R28W1

T9

T9

T8

T8



R29

R28W1

Appendix No. 19

Tundra Oil & Gas Partnership	
PROPOSED SINCLAIR UNIT No. 17	
Lower Lyleton A $k^*h@0.5mD$ CO, CI=1.0mD*m	
Core points starred and values posted	
gSCOUT	Scale = 1:25000
gSCOUT	Project: Sinclair Daily 2015 Expansion



R29

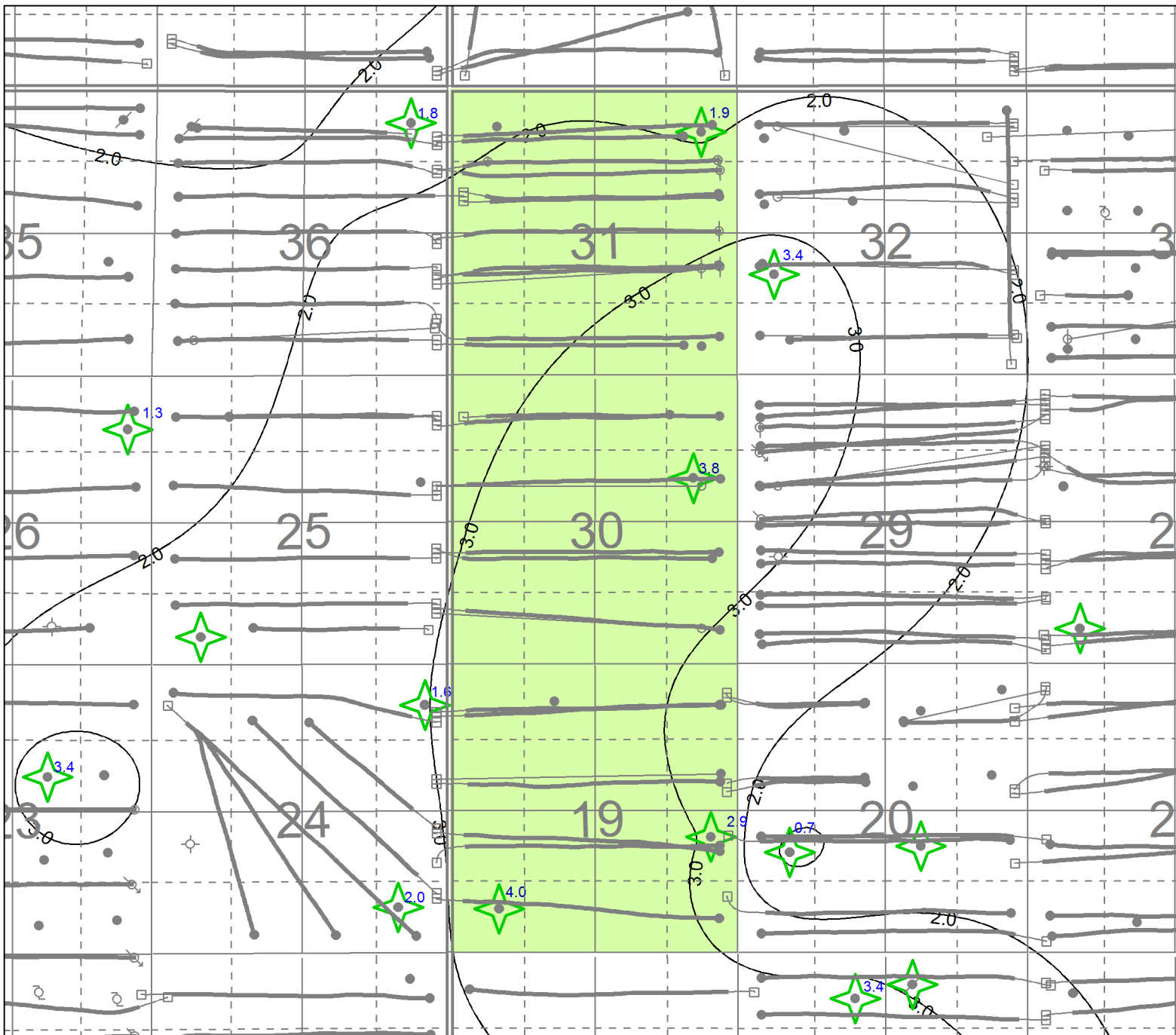
R28W1

T9

T9

T8

T8



R29

R28W1

Appendix No. 20

Tundra Oil & Gas Partnership		
PROPOSED SINCLAIR UNIT No. 17		
Lyleton B k*h@0.5mD CO, CI=1.0mD*m		
Core points starred and values posted		
Approved to: Tundra Oil & Gas Partnership	By: [Signature]	Date: 2015-08-01
gEO5COUT	Scale: 1:25112	Project: Sinclair 2015 Expansion



R29

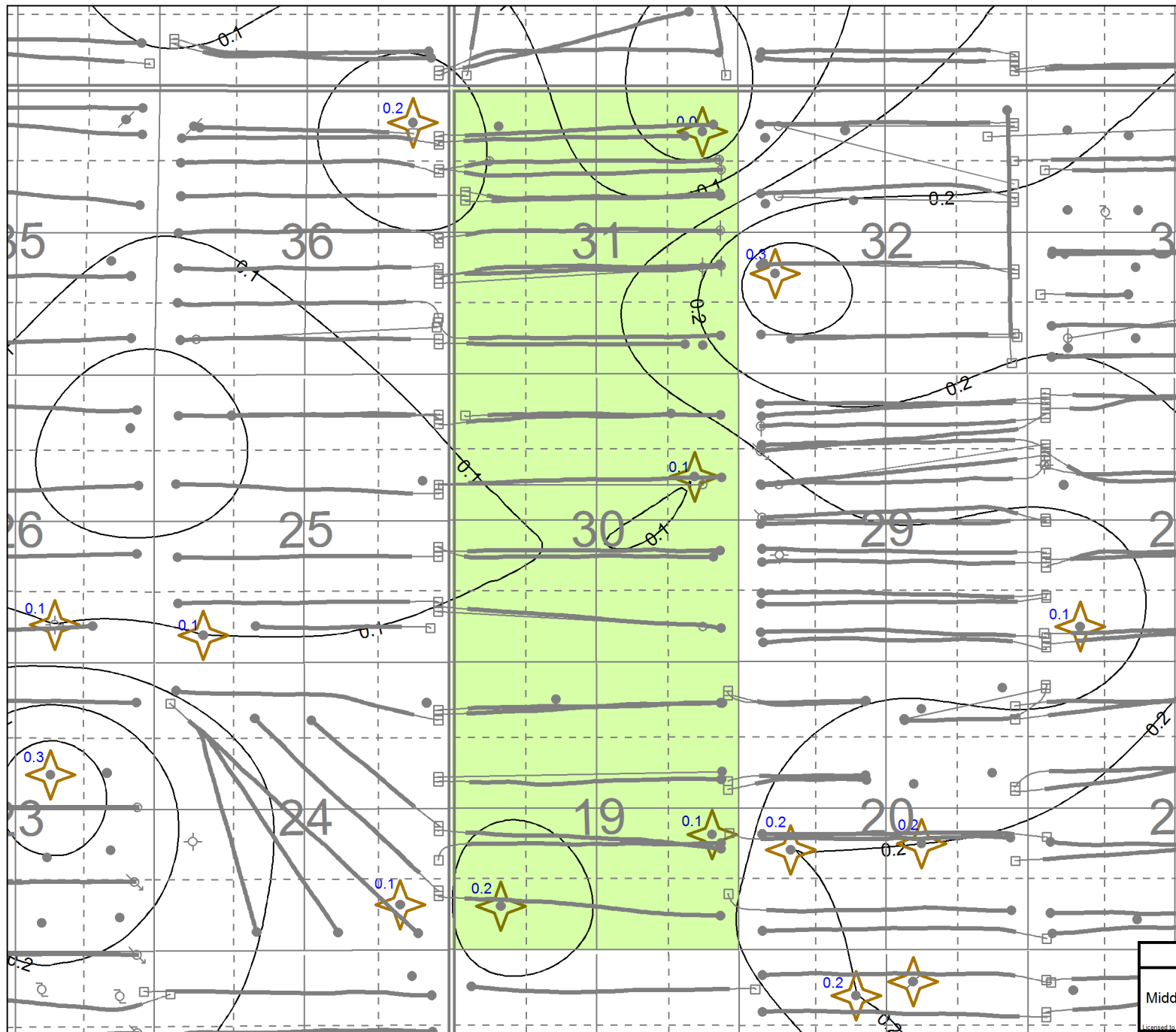
R28W1

T9

T9

T8

T8



R29

R28W1

Appendix No. 21

Tundra Oil & Gas Partnership	
PROPOSED SINCLAIR UNIT No. 17	
Middle Bakken $\phi^*h@1.0mD$ CO, CI=0.05 ϕ^*m	
Core points starred and values posted	
g9SCOUT	Page: 2012-08-11
Scale = 1:25000	Project: Sinclair Only 2015 Expansion



R29

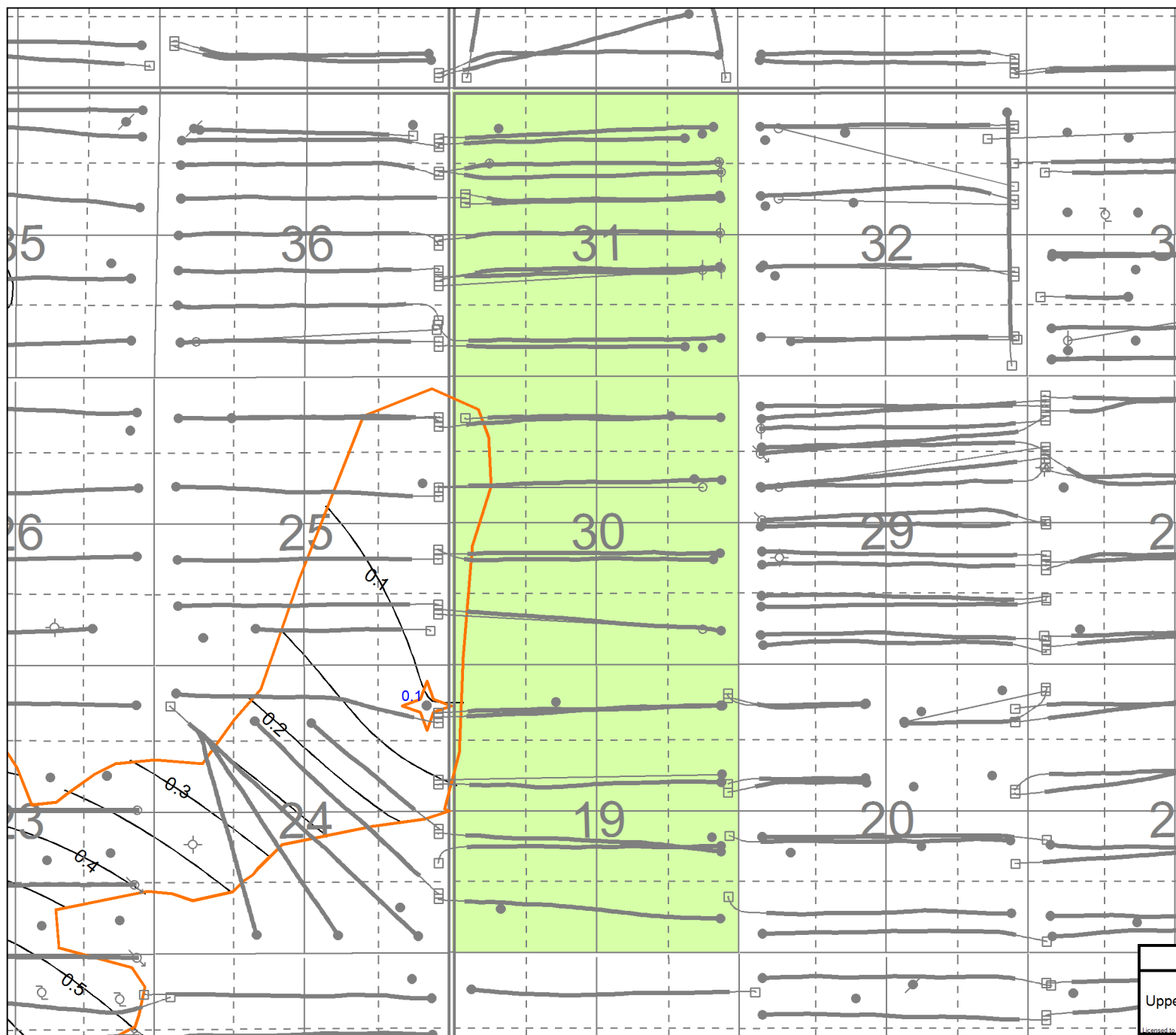
R28W1

T9

T9

T8

T8



R29

R28W1

Appendix No. 22

Tundra Oil & Gas Partnership	
PROPOSED SINCLAIR UNIT No. 17	
Upper Lyleton A $\phi^*h@1.0mD$ CO, CI=0.05 ϕ^*m	
Core points starred and values posted	
g9SCOUT	By: [blank] Date: 2014/08/14
Scale = 1:25112	Drawn: [blank] Review Date: 2014/08/14



R29

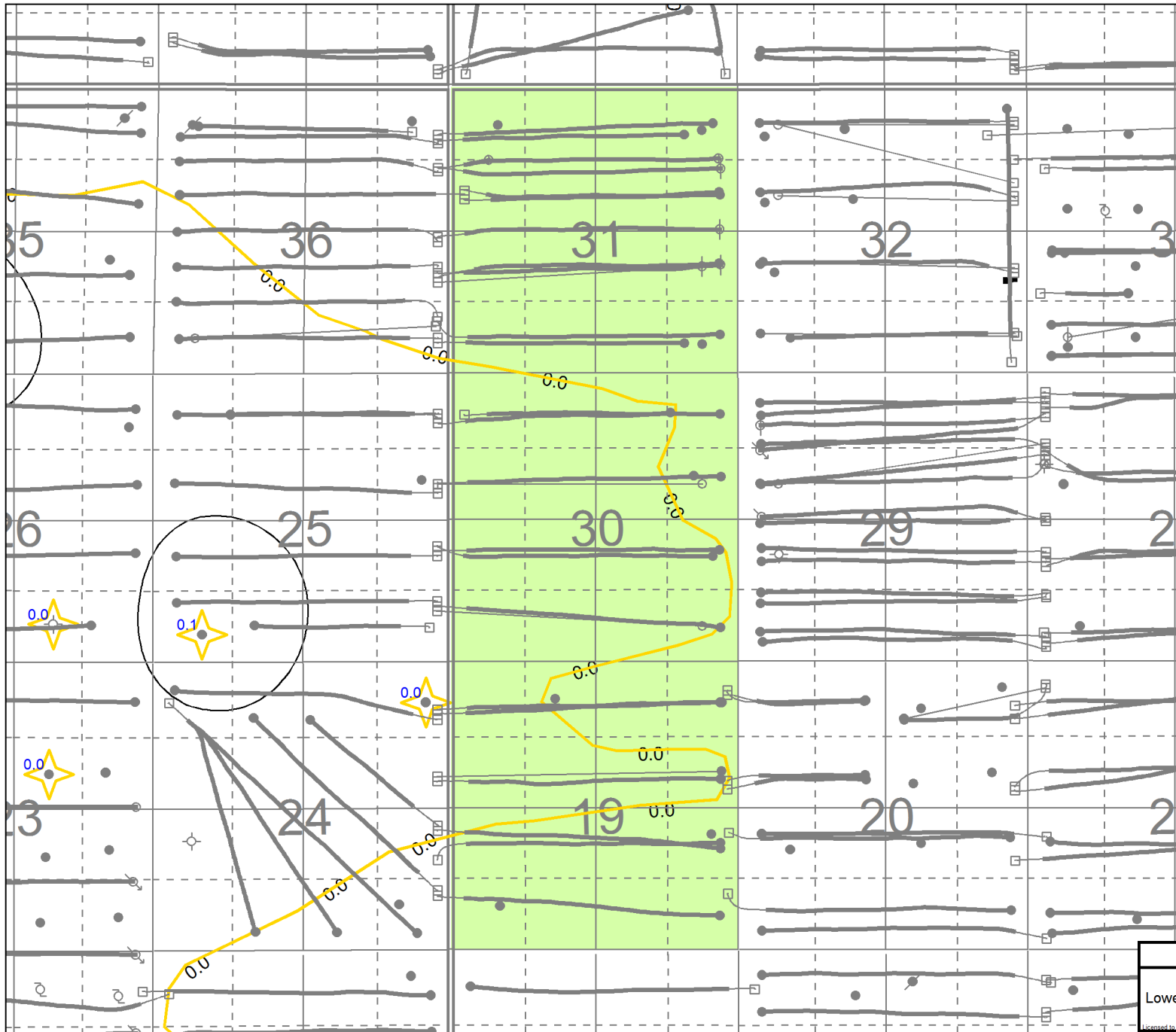
R28W1

T9

T9

T8

T8



R29

R28W1

Appendix No. 23

Tundra Oil & Gas Partnership	
PROPOSED SINCLAIR UNIT No. 17	
Lower Lyleton A $\phi_i^h @ 1.0mD$ CO, CI=0.05 $\phi_i^h m$	
Core points starred and values posted	
By: <small>g99SCOUT</small>	Date: 2014/08/14
Scale: 1:25112	Drawn: Sinclair Data 2014 Extension



R29

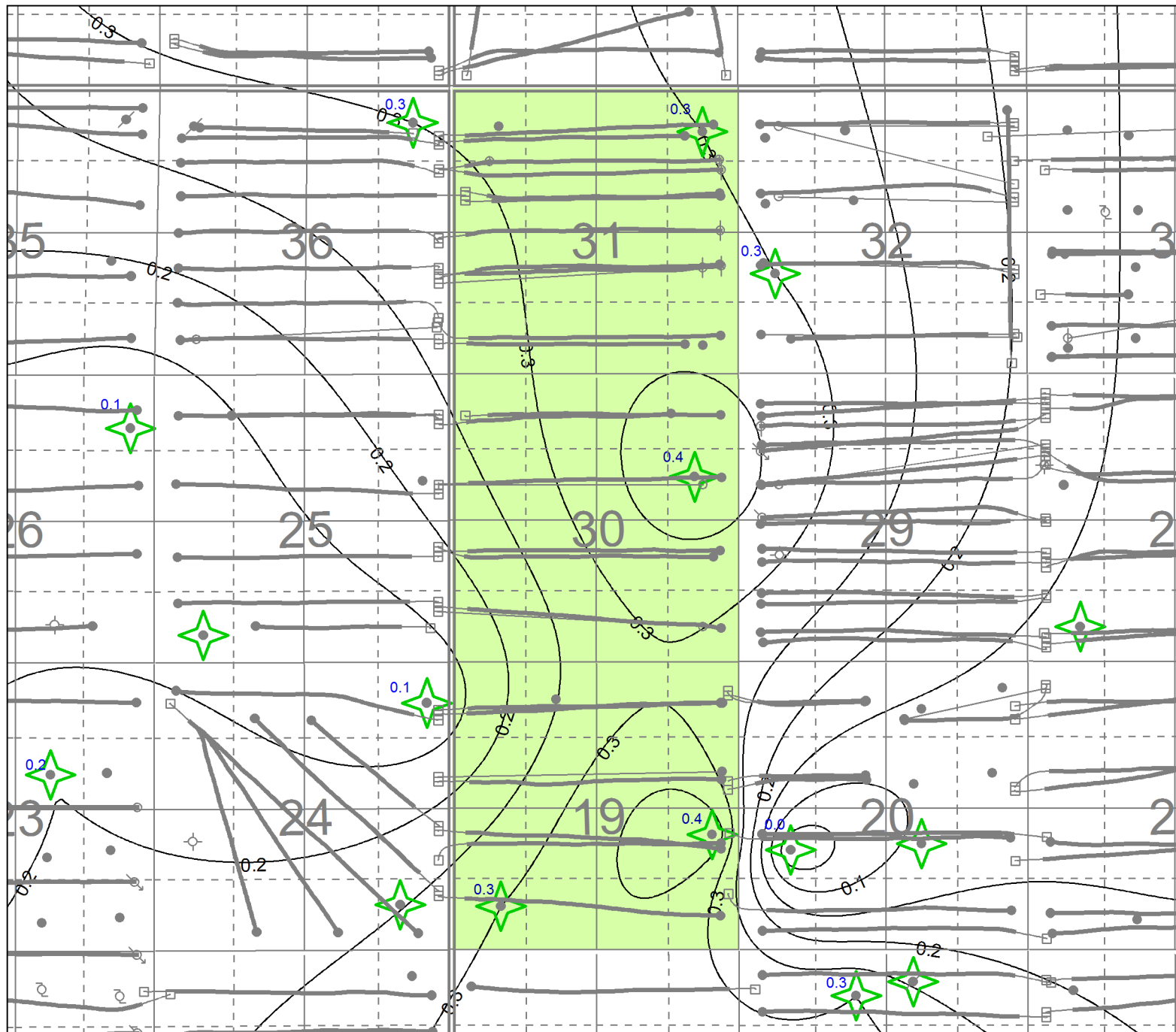
R28W1

T9

T9

T8

T8



R29

R28W1

Appendix No. 24

Tundra Oil & Gas Partnership		
PROPOSED SINCLAIR UNIT No. 17		
Lyleton B $\phi_i^*h@1.0mD$ CO, CI=0.05 ϕ_i^*m		
Core points starred and values posted		
g95SCOUT	By: H43327	Date: 2015-08-11
	Scale: 1:10000	Project: Sineau Park 2015 Extension



R29

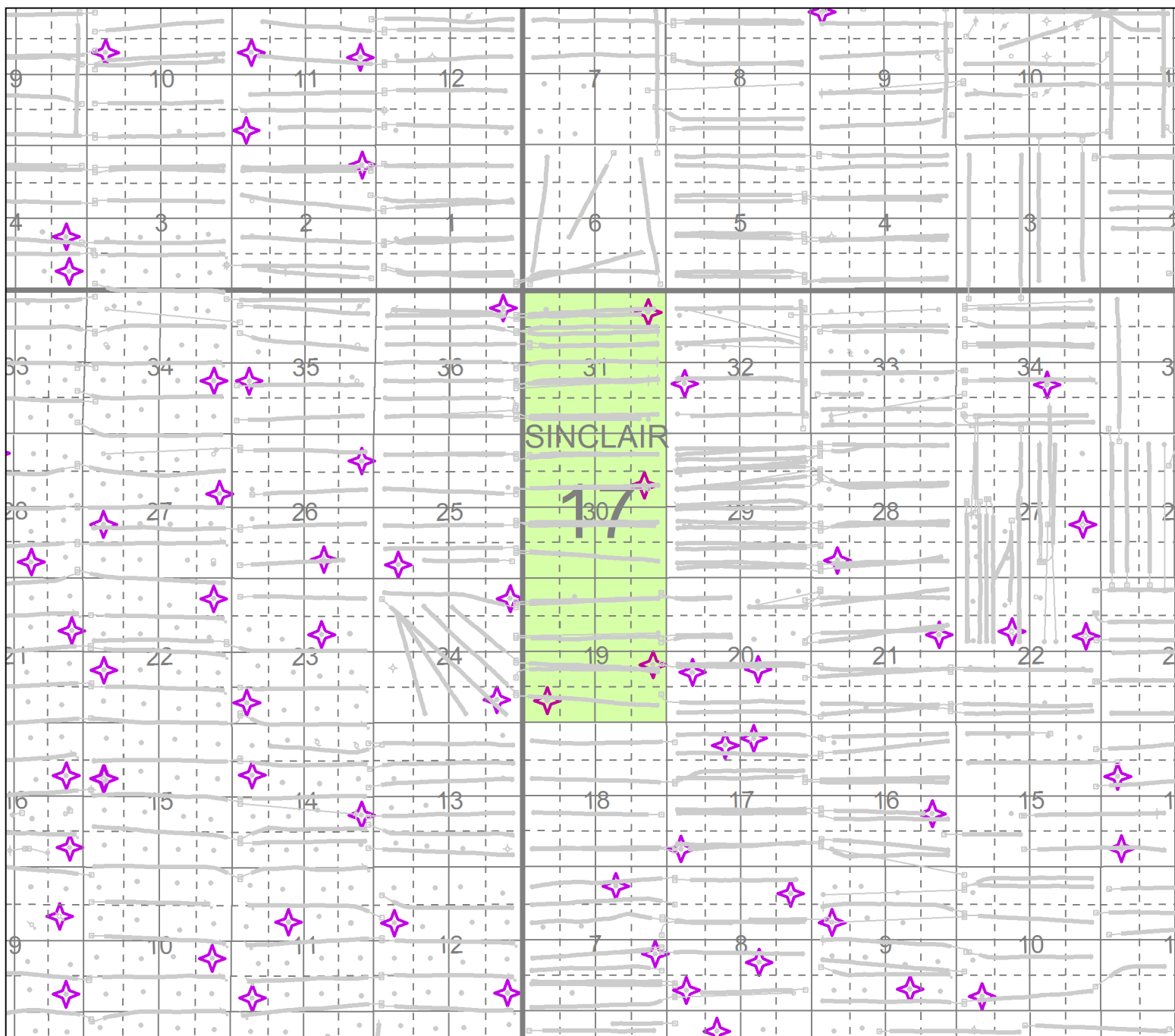
R28W1

T9

T9

T8

T8



R29

R28W1

Appendix No. 25

Tundra Oil & Gas Partnership	
PROPOSED SINCLAIR UNIT No. 17	
Area Wells and Cored Wells	
Starred wells have Bakken / Lyleton Core	
905SCOUT	By: Hankard Date: 2015/09/26
Scale: 1:50000	Project: Sinclair Unit 2014 Extension