

EWART UNIT NO. 1
WATERFLOOD EOR PROJECT
ANNUAL REPORT FOR 2013

March 21, 2014

Tundra Oil and Gas Partnership

Table of Contents

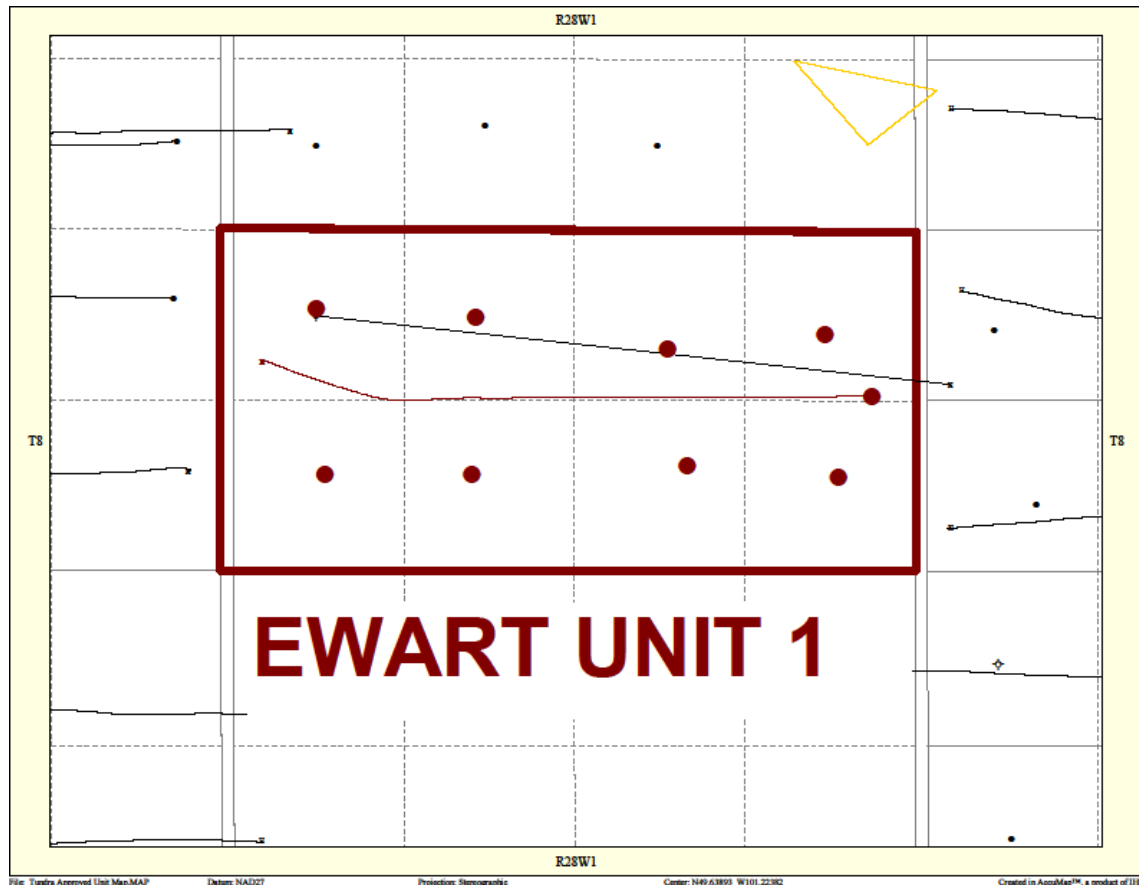
Introduction	3.
Discussion	3.
Production History	3.
Waterflood Development Plan	5.
Waterflood EOR Operating Strategy and Performance	6.
Water Source and Quality	6.
Injection Wellhead Pressures	6.
Reservoir Pressure	6.
Well Servicing	6.
Waterflood Performance Discussion	6.
List of Appendices	7.
Appendix A: Ewart Unit No. 1 Injection Pattern Summary	
Appendix B: Ewart Unit No. 1 Pressure Summary	
Appendix C: Injector Pattern Production/Injection Rates, Cumulative and VRR Plots and Tables for the following injector:	

102/08-09-008-28W1

INTRODUCTION

Ewart Unit No. 1 was approved on November 1, 2012 with Tundra Oil and Gas Partnership (Tundra) as Operator. The Unit area contains 8 producing vertical wells in 8 LSDs in Township 8 Range 28 W1 as shown in the figure below.

Figure 1: Ewart Unit No. 1 Area Outline



In accordance with Section 73 of the Manitoba Drilling and Production Regulation, Tundra hereby submits the following 2013 Annual Progress Report for Ewart Unit No. 1.

DISCUSSION

Production History

For the wells included in Ewart Unit No. 1, production started in November 2005 with the 00/02-09-008-28W1 well. Average oil production peaked at 3.68 m³/d per well in March

2008. This production was coming from 8 wells and totaled 29.44 m³/d for the whole Unit. In December 2013, the Unit was producing 4.62 m³/d of oil and 4.98 m³/d of water. Water injection commenced in Ewart Unit No. 1 in July 2013. The rates and WOR are presented in Figure 2.

Figure 2: Ewart Unit 1 Production/Injection Rates and WOR vs Time

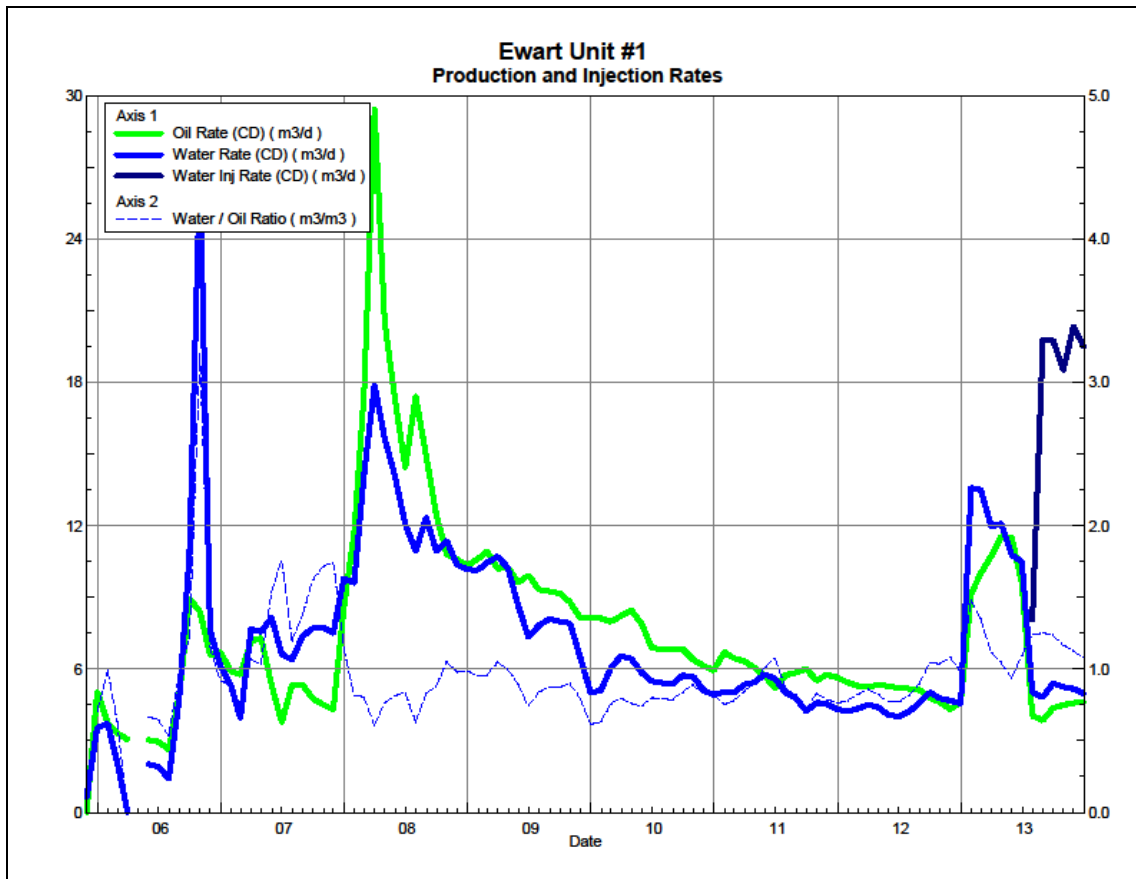
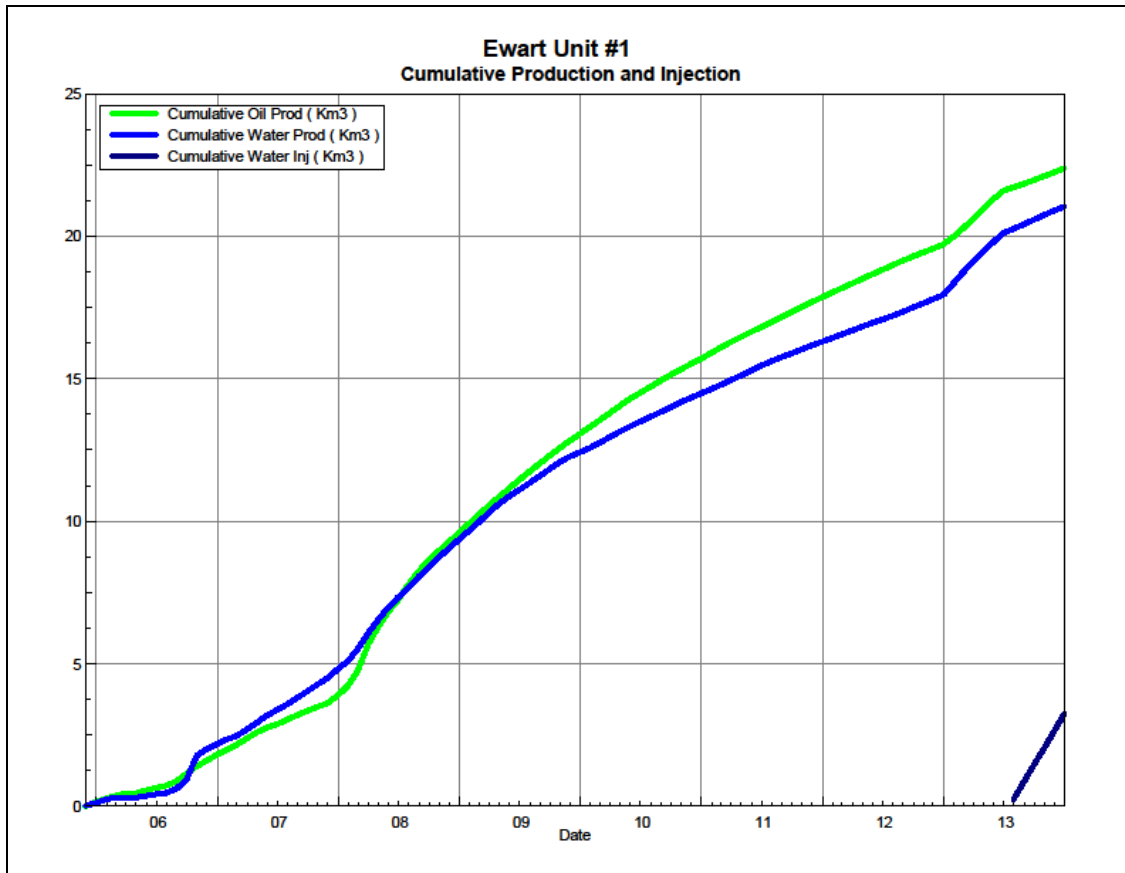


Figure 3 shows the cumulative production for Ewart Unit No. 1 to the end of December 2013 as 22.4 E³m³ of oil, and 21.1 E³m³ of water, representing a 9.2% recovery factor of the OOIP.

Figure 3: Ewart Unit 1 Cumulative Oil, Water and Water Injected vs Time



Waterflood Development Plan

Ewart Unit No. 1 Waterflood (WF) Development Plan

Ewart Unit No. 1 is still in the development phase at the end of 2013. In November 2012, the single proposed horizontal injector for the unit was drilled (02/08-09-008-28W1/0) and put on production January 2013. In July 2013, the 02/08-09 well was converted to an injector. All horizontal wells are fracture stimulated to improve the injection rates.

Production performance by injector pattern are summarized in Appendix A.

Any future revisions to the waterflood development or surveillance plan would be based on new production or performance response data, technical studies, or observed reservoir behavior and reserves recovery interpretations.

Waterflood EOR Operating Strategy and Performance

Water Source and Quality

The injection water for Ewart Unit No. 1 will be sourced from the 16-32-007-29W1 well (Lodgepole formation). The water is treated at the 03-04-008-29W1 battery where it is filtered to 0.5 microns and has scale inhibitor added. The injection water is then distributed to the injectors through the dedicated infrastructure system.

Injection Wellhead Pressures

Injection started in this Unit in July 2013. Since injection in this Unit is still in the early stages, the injectors are still building up to a target injection pressure of 6300 kPaa.

Reservoir Pressure

Where practical, Tundra is committed to collecting pressure data from newly drilled injection wells. For Ewart Unit No. 1, pressure data is currently available for the 02/08-09-008-28W1 location. A summary table is presented in Appendix B. Pressures are corrected to a common datum of -450 m SS for comparison with other units in the area.

Well Servicing

The following table summarizes the well servicing performed within Ewart Unit No. 1 during 2013:

Table 1: Ewart Unit No. 1 Well Servicing

00/01-09-008-28W1/0	Pump Change	5/30/2013
---------------------	-------------	-----------

Waterflood Performance Discussion

At the end of 2013, Ewart Unit No. 1 had 1 injection pattern in place. Since water injection started in July 2013, there is no waterflood analysis that can be done at this time. A summary table of the injector pattern is presented in Appendix A. Plots and tables of the production and injection data along with the VRR information are presented in Appendix C for each injector pattern.

List of Appendices

Appendix A: Ewart Unit No. 1 Injection Pattern Summary

Appendix B: Ewart Unit No. 1 Pressure Summary

Appendix C: Injector Pattern Production/Injection Rates, Cumulative and VRR Plots
and Tables for the following injector:

102/08-09-008-28W1

Appendix A

Ewart Unit No. 1 Injection Pattern Summary as of December 2013

Pattern Name	Injector BH Location (008-28W1)	Injector Surf. Location (008-28W1)	Status	Supported Wells (008-28W1)	No. of Supported Wells	Allocation Factor	Pattern Prod Start Month	Inj Start Month	Oil Rate (m ³ /d)	Water Rate (m ³ /d)	WOR (m ³ /m ³)	Water Injection (m ³ /d)	Cum Oil (E ³ m ³)	Cum Water (E ³ m ³)	Cum Inj Water (E ³ m ³)	Monthly VRR	Cum VRR
02/08-09-008-28W1 Injector	02/08-09	02/05-09	Water Injection	01-09, 02-09, 03-09, 04-09, 05-09, 06-09, 07-09, 08-09	8	1	Nov 2005	Jul 2013	4.6	4.6	0.98	-	19.7	17.9	-	-	-

APPENDIX B

Ewart Unit No. 1 - Pressure Summary

Location	Test Date	Final Pressure (kPaa)	MPP (mTVD)	KB	Datum Depth	Gradient	Pressure @ -450 masl
102/08-09-008-28W1/00	Nov 15 - Dec 8, 2012	4432.5	912.26	501.65	-450	8.25	4757

Appendix C
Rates and VRR
Plots and Tables

Oil Formation Vol Factor : 1.07100 m3/m3

Pattern: 02/08-09-008-28Inj Set: EwartUnit#1

Water Formation Vol Factor : 1.00150 m3/m3

March 26, 2014

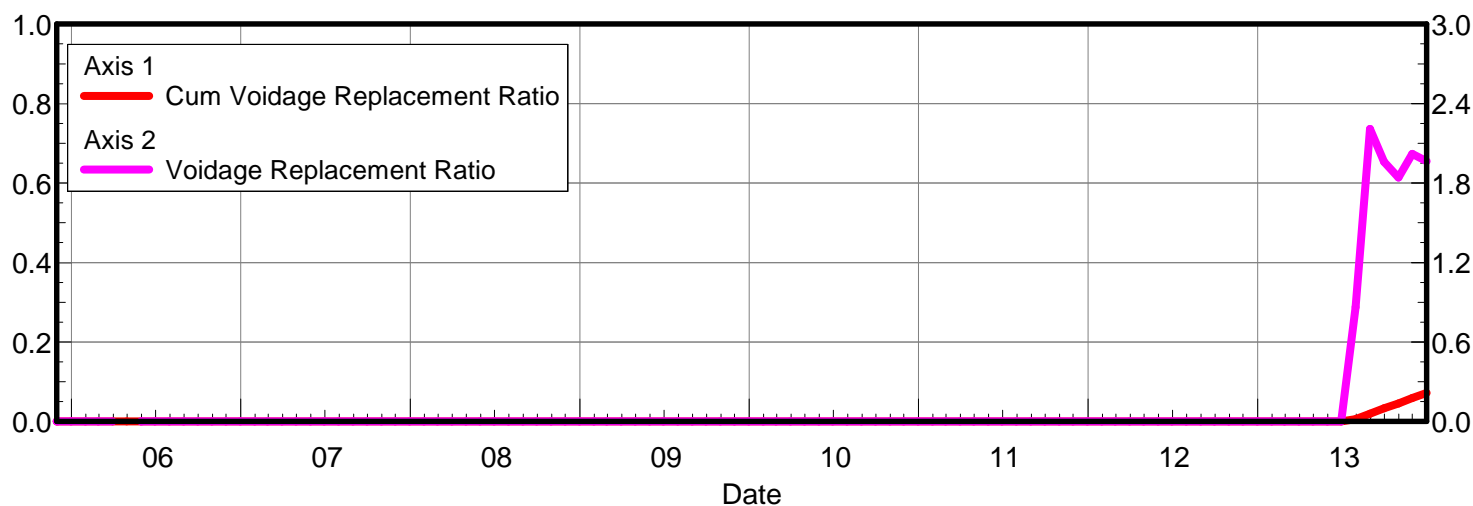
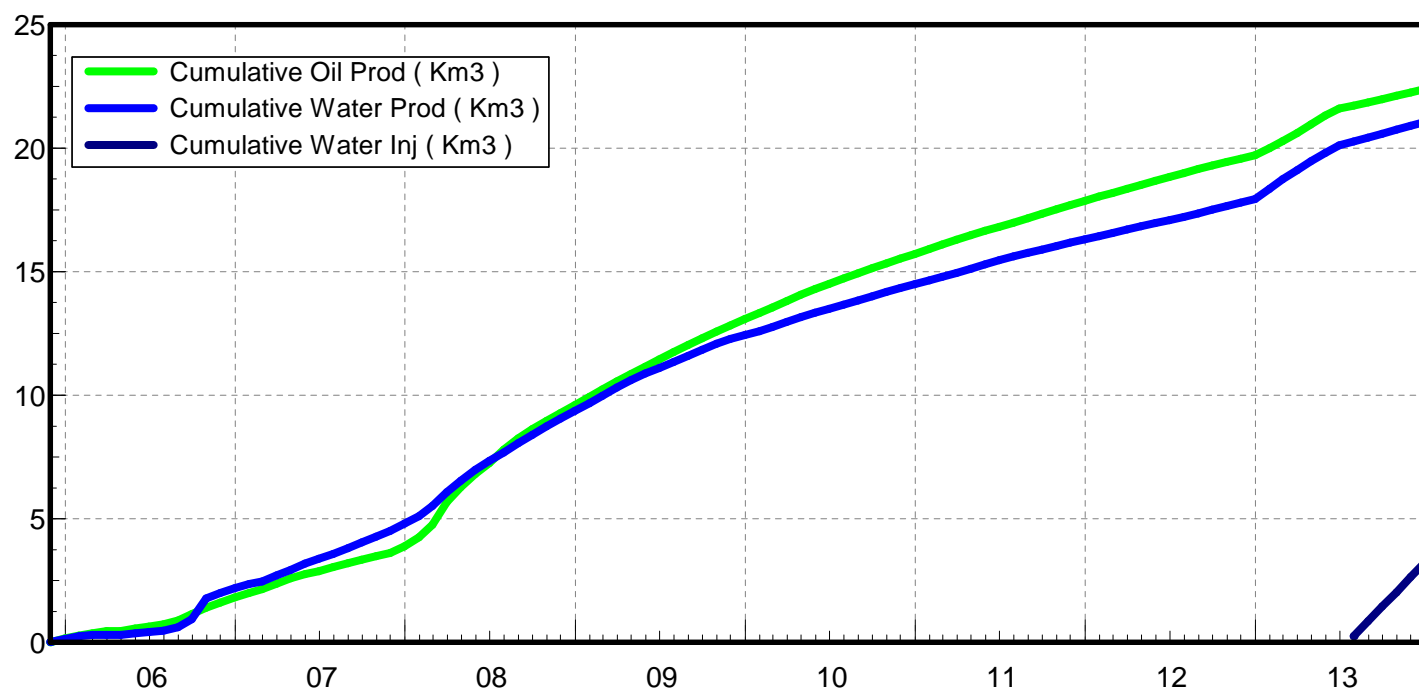
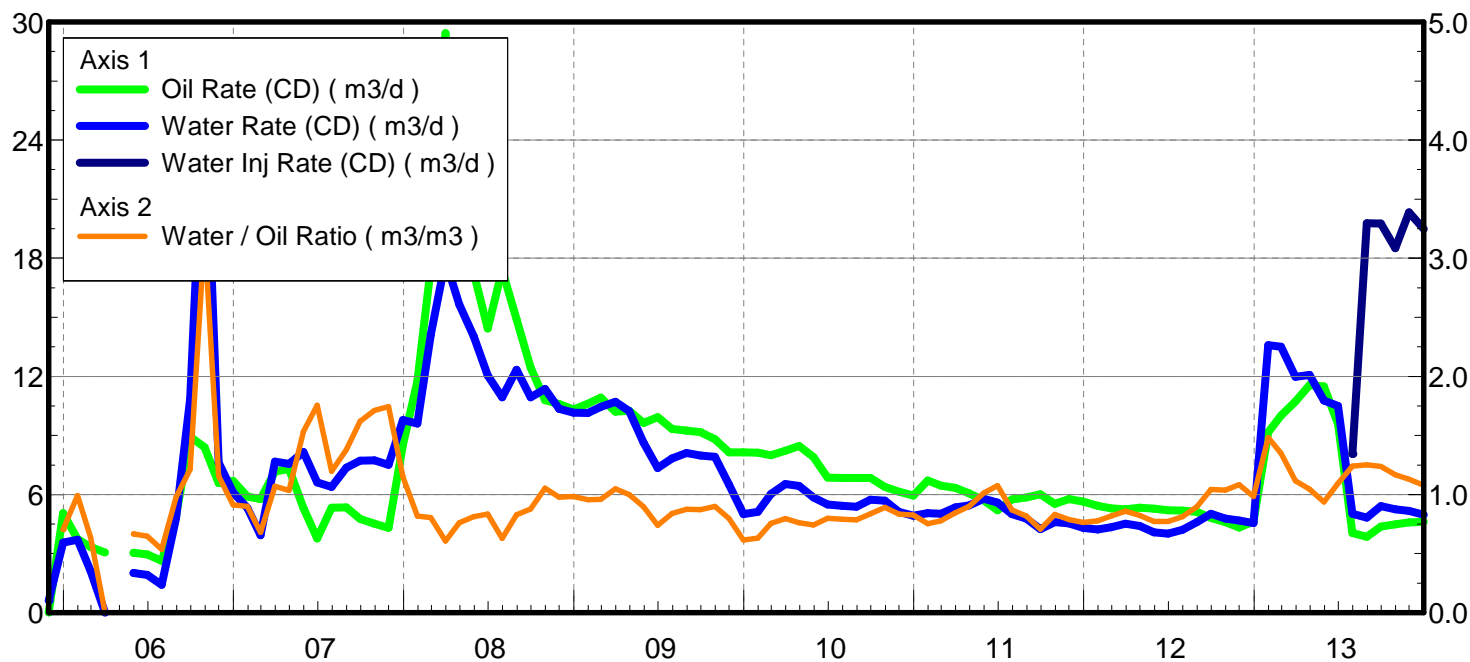
Oil Rate (CD) : 4.43 m3/d

Water Rate (CD) : 4.43 m3/d

Water / Oil Ratio : 1.00 m3/m3

Operator: Tundra_O&G_Prtshp

Water Inj Rate (CD) : 19.77 m3/d



Date	Oil Rate (CD) m3/d	Water Rate (CD) m3/d	Water Oil Ratio m3/m3	Water Inj Rate (CD) m3/d	Cum Oil Prod Km3	Cum Water Prod Km3	Cum Water Inj Km3	VRR	CUM VRR
11/30/2005	0.02	0.63	37.60		0.00	0.02	0.00	0.000	0.000
12/31/2005	5.05	3.55	0.70		0.16	0.13	0.00	0.000	0.000
1/31/2006	3.75	3.71	0.99		0.27	0.24	0.00	0.000	0.000
2/28/2006	3.33	2.12	0.64		0.37	0.30	0.00	0.000	0.000
3/31/2006	3.05	0.00	0.00		0.46	0.30	0.00	0.000	0.000
5/31/2006	3.04	2.02	0.67		0.56	0.37	0.00	0.000	0.000
6/30/2006	2.96	1.92	0.65		0.64	0.42	0.00	0.000	0.000
7/31/2006	2.64	1.42	0.54		0.73	0.47	0.00	0.000	0.000
8/31/2006	4.92	4.81	0.98		0.88	0.62	0.00	0.000	0.000
9/30/2006	8.95	10.85	1.21		1.15	0.94	0.00	0.000	0.000
10/31/2006	8.41	26.89	3.20		1.41	1.78	0.00	0.000	0.000
11/30/2006	6.59	7.62	1.16		1.60	2.00	0.00	0.000	0.000
12/31/2006	6.70	6.11	0.91		1.81	2.19	0.00	0.000	0.000
1/31/2007	5.91	5.31	0.90		2.00	2.36	0.00	0.000	0.000
2/28/2007	5.77	3.93	0.68		2.16	2.47	0.00	0.000	0.000
3/31/2007	7.17	7.67	1.07		2.38	2.71	0.00	0.000	0.000
4/30/2007	7.30	7.56	1.04		2.60	2.93	0.00	0.000	0.000
5/31/2007	5.32	8.16	1.53		2.76	3.19	0.00	0.000	0.000
6/30/2007	3.77	6.62	1.76		2.88	3.38	0.00	0.000	0.000
7/31/2007	5.33	6.39	1.20		3.04	3.58	0.00	0.000	0.000
8/31/2007	5.35	7.36	1.38		3.21	3.81	0.00	0.000	0.000
9/30/2007	4.77	7.72	1.62		3.35	4.04	0.00	0.000	0.000
10/31/2007	4.51	7.73	1.71		3.49	4.28	0.00	0.000	0.000
11/30/2007	4.31	7.52	1.75		3.62	4.51	0.00	0.000	0.000
12/31/2007	8.53	9.79	1.15		3.88	4.81	0.00	0.000	0.000
1/31/2008	11.75	9.61	0.82		4.25	5.11	0.00	0.000	0.000
2/29/2008	17.53	14.13	0.81		4.76	5.52	0.00	0.000	0.000
3/31/2008	29.44	17.89	0.61		5.67	6.07	0.00	0.000	0.000
4/30/2008	20.53	15.66	0.76		6.29	6.54	0.00	0.000	0.000
5/31/2008	17.26	14.05	0.81		6.82	6.98	0.00	0.000	0.000
6/30/2008	14.42	12.05	0.84		7.25	7.34	0.00	0.000	0.000
7/31/2008	17.40	10.94	0.63		7.79	7.68	0.00	0.000	0.000
8/31/2008	14.90	12.34	0.83		8.25	8.06	0.00	0.000	0.000
9/30/2008	12.45	10.93	0.88		8.63	8.39	0.00	0.000	0.000
10/31/2008	10.79	11.36	1.05		8.96	8.74	0.00	0.000	0.000
11/30/2008	10.60	10.36	0.98		9.28	9.05	0.00	0.000	0.000
12/31/2008	10.33	10.16	0.98		9.60	9.37	0.00	0.000	0.000
1/31/2009	10.61	10.14	0.96		9.93	9.68	0.00	0.000	0.000
2/28/2009	10.92	10.46	0.96		10.24	9.97	0.00	0.000	0.000
3/31/2009	10.20	10.70	1.05		10.55	10.31	0.00	0.000	0.000
4/30/2009	10.25	10.24	1.00		10.86	10.61	0.00	0.000	0.000
5/31/2009	9.63	8.63	0.90		11.16	10.88	0.00	0.000	0.000
6/30/2009	9.92	7.34	0.74		11.46	11.10	0.00	0.000	0.000
7/31/2009	9.33	7.83	0.84		11.74	11.34	0.00	0.000	0.000
8/31/2009	9.25	8.11	0.88		12.03	11.60	0.00	0.000	0.000
9/30/2009	9.17	7.99	0.87		12.31	11.83	0.00	0.000	0.000
10/31/2009	8.80	7.92	0.90		12.58	12.08	0.00	0.000	0.000
11/30/2009	8.14	6.50	0.80		12.82	12.28	0.00	0.000	0.000

Date	Oil Rate (CD) m3/d	Water Rate (CD) m3/d	Water Oil Ratio m3/m3	Water Inj Rate (CD) m3/d	Cum Oil Prod Km3	Cum Water Prod Km3	Cum Water Inj Km3	VRR	CUM VRR
12/31/2009	8.15	5.00	0.61		13.08	12.43	0.00	0.000	0.000
1/31/2010	8.12	5.12	0.63		13.33	12.59	0.00	0.000	0.000
2/28/2010	7.99	6.03	0.76		13.55	12.76	0.00	0.000	0.000
3/31/2010	8.22	6.54	0.80		13.81	12.96	0.00	0.000	0.000
4/30/2010	8.46	6.43	0.76		14.06	13.15	0.00	0.000	0.000
5/31/2010	7.90	5.85	0.74		14.31	13.34	0.00	0.000	0.000
6/30/2010	6.87	5.49	0.80		14.51	13.50	0.00	0.000	0.000
7/31/2010	6.85	5.43	0.79		14.72	13.67	0.00	0.000	0.000
8/31/2010	6.84	5.38	0.79		14.94	13.84	0.00	0.000	0.000
9/30/2010	6.84	5.73	0.84		15.14	14.01	0.00	0.000	0.000
10/31/2010	6.38	5.69	0.89		15.34	14.18	0.00	0.000	0.000
11/30/2010	6.14	5.12	0.83		15.52	14.34	0.00	0.000	0.000
12/31/2010	5.95	4.92	0.83		15.71	14.49	0.00	0.000	0.000
1/31/2011	6.71	5.05	0.75		15.92	14.65	0.00	0.000	0.000
2/28/2011	6.46	5.02	0.78		16.10	14.79	0.00	0.000	0.000
3/31/2011	6.33	5.35	0.85		16.29	14.95	0.00	0.000	0.000
4/30/2011	6.06	5.44	0.90		16.47	15.12	0.00	0.000	0.000
5/31/2011	5.71	5.78	1.01		16.65	15.29	0.00	0.000	0.000
6/30/2011	5.20	5.59	1.08		16.81	15.46	0.00	0.000	0.000
7/31/2011	5.75	5.01	0.87		16.99	15.62	0.00	0.000	0.000
8/31/2011	5.85	4.78	0.82		17.17	15.77	0.00	0.000	0.000
9/30/2011	6.01	4.24	0.71		17.35	15.89	0.00	0.000	0.000
10/31/2011	5.52	4.60	0.83		17.52	16.04	0.00	0.000	0.000
11/30/2011	5.76	4.54	0.79		17.69	16.17	0.00	0.000	0.000
12/31/2011	5.65	4.31	0.76		17.87	16.31	0.00	0.000	0.000
1/31/2012	5.44	4.23	0.78		18.03	16.44	0.00	0.000	0.000
2/29/2012	5.30	4.34	0.82		18.19	16.56	0.00	0.000	0.000
3/31/2012	5.25	4.51	0.86		18.35	16.70	0.00	0.000	0.000
4/30/2012	5.34	4.40	0.82		18.51	16.83	0.00	0.000	0.000
5/31/2012	5.29	4.08	0.77		18.68	16.96	0.00	0.000	0.000
6/30/2012	5.21	4.01	0.77		18.83	17.08	0.00	0.000	0.000
7/31/2012	5.18	4.22	0.81		18.99	17.21	0.00	0.000	0.000
8/31/2012	5.12	4.60	0.90		19.15	17.35	0.00	0.000	0.000
9/30/2012	4.82	5.03	1.04		19.30	17.51	0.00	0.000	0.000
10/31/2012	4.60	4.77	1.04		19.44	17.65	0.00	0.000	0.000
11/30/2012	4.33	4.68	1.08		19.57	17.79	0.00	0.000	0.000
12/31/2012	4.64	4.56	0.98		19.71	17.94	0.00	0.000	0.000
1/31/2013	9.16	13.58	1.48		20.00	18.36	0.00	0.000	0.000
2/28/2013	10.00	13.50	1.35		20.28	18.73	0.00	0.000	0.000
3/31/2013	10.73	11.97	1.12		20.61	19.11	0.00	0.000	0.000
4/30/2013	11.56	12.08	1.05		20.95	19.47	0.00	0.000	0.000
5/31/2013	11.48	10.77	0.94		21.31	19.80	0.00	0.000	0.000
6/30/2013	9.58	10.49	1.09		21.60	20.12	0.00	0.000	0.000
7/31/2013	4.04	5.02	1.24	8.06	21.72	20.27	0.25	0.864	0.006
8/31/2013	3.86	4.83	1.25	19.77	21.84	20.42	0.86	2.208	0.020
9/30/2013	4.37	5.41	1.24	19.77	21.97	20.58	1.46	1.960	0.033
10/31/2013	4.49	5.25	1.17	18.52	22.11	20.75	2.03	1.842	0.046
11/30/2013	4.58	5.17	1.13	20.33	22.25	20.90	2.64	2.020	0.059

Date	Oil Rate (CD) m3/d	Water Rate (CD) m3/d	Water Oil Ratio m3/m3	Water Inj Rate (CD) m3/d	Cum Oil Prod Km3	Cum Water Prod Km3	Cum Water Inj Km3	VRR	CUM VRR
12/31/2013	4.62	4.98	1.08	19.48	22.39	21.06	3.24	1.965	0.072



TUNDRA OIL & GAS PARTNERSHIP

EWART UNIT No. 1 HZNTL (5B-9) 8A-9-8-28

102/08-09-008-28W1/0

LICENSE #: 9066

BAKKEN FORMATION

Open Hole: 1027 – 2292 mKBMD
(914.78 – 909.74 TVD)

RESERVOIR PRESSURE SURVEY DATA
NOVEMBER 15th - DECEMBER 8th, 2012

Prepared by: **DOLLCO Well Data Services**
e-mail: dollco@shaw.ca

PO Box 326
417A Mississippian Drive
Esteran, SK
S4A 2A4

Cell: (306) 421 - 7330
Fax: (306) 634 - 7976
Res: (306) 634 - 8761

E-mail: qualityw@sasktel.net

Pressure Survey Report

Company Information

Company Name	TUNDRA OIL & GAS PARTNERSHIP
Contact	CRAIG LANE
e-mail	craig.lane@tundraoilandgas.com
Phone	(204) 748-5894
Site Contact	BRENT DALZIEL
Site Phone	(204) 522-0864

Well Information

Well Name	EWART UNIT No. 1 HZNTL (5B-9) 8A-9-8-28
Unique Well ID	102/08-09-008-29W1/00
Surface Location	5B-9 / 8A-9-8-28W1
Well License Number	9066
Well Type	Horizontal
Well Fluid Type	01 Oil
Field	EWART UNIT No. 1

KB Elevation (SL)	501.65 m
CF Elevation (SL)	497.55 m
GL Elevation (SL)	498.26 m
Distance from KB to CF (Log)	4.10 m
KB-GL Offset	3.39 m

Tubing ID	mm
Tubing OD	mm
Tubing Depth(Log KB)	m
Tubing Depth(TVD KB)	m
Casing ID	mm
Casing OD	139.7 mm
Casing Depth(Log KB)	1027.00 m
Casing Depth(TVD KB)	914.78 m
PBTD(Log KB)	m
PBTD(TVD KB)	m



Pressure Survey Report

Test Information

Well Name EWART UNIT No. 1 HZNTL (5B-9) 8A-9-8-28
Unique Well ID 102/08-09-008-29W1/00
Surface Location 5B-9 / 8A-9-8-28W1
Well License Number 9066

Well Fluid Type 01 Oil
Test Purpose Initial Test
Test Type RESERVOIR PRESSURE SURVEY
Formation BAKKEN
Pool
Well Type Indicator Horizontal
Test/Prod. Interval Top KB (Log) 1027.00 m
Test/Prod. Interval Base KB (Log) 2292.00 m
MPP(Log KB) 1659.50 m
Test/Prod Interval Top KB (TVD) 914.78 m
Test/Prod. Interval Base m KB (TVD) 909.74 m
MPP(TVD KB) 912.26 m

Date/Time Gauge on Bottom 2012/11/15 02:31:00
Date/Time Gauge Off Bottom 2012/11/15 17:03:00
Time/Date Well Shut-In 2012/11/15 02:32:00

Tubing Pressure Initial kPa(a)
Casing Pressure Initial kPa(a)
Tubing Pressure: Final kPa(a)
Casing Pressure: Final kPa(a)

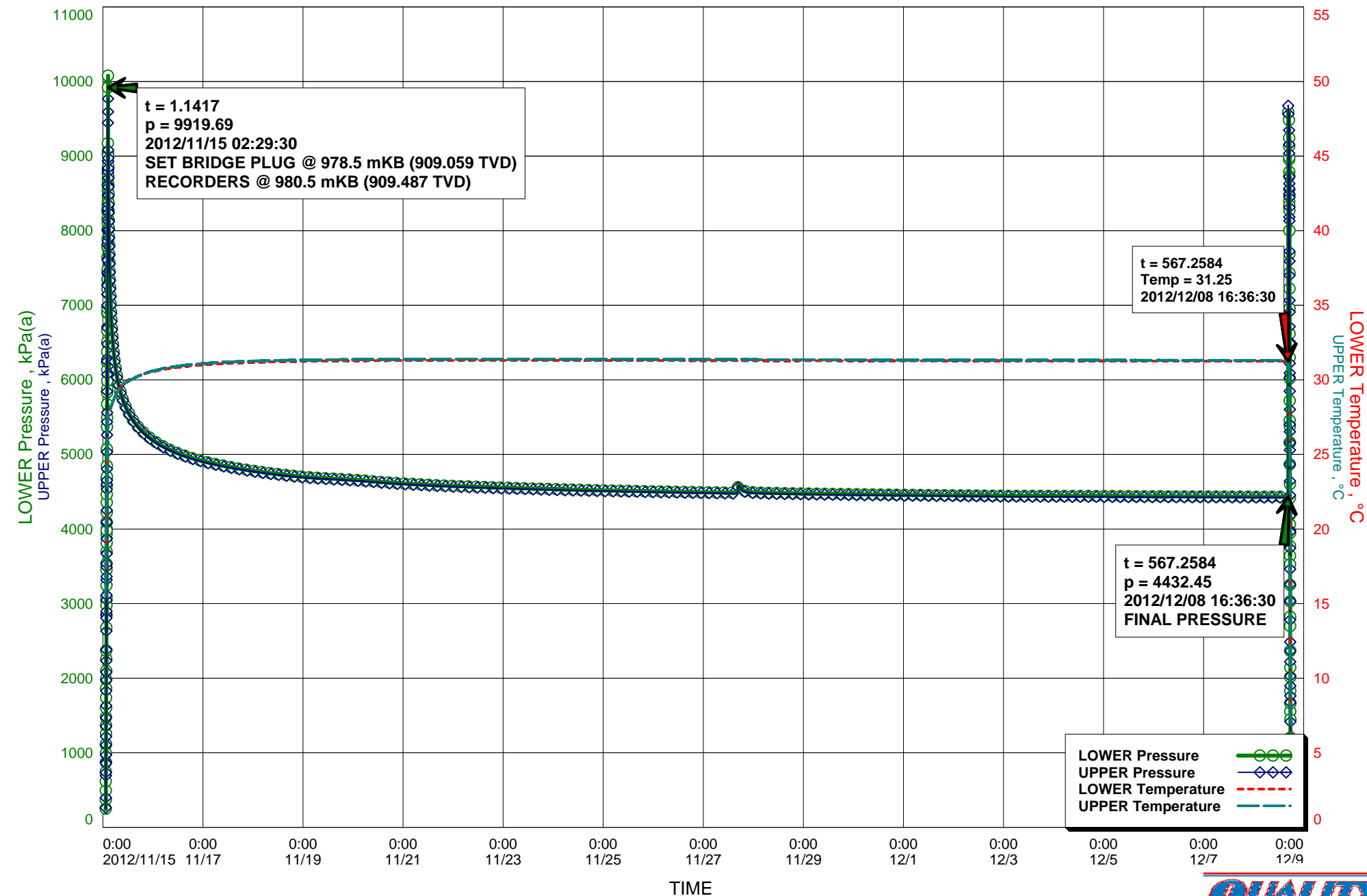
Last Measured Pressure at Run Depth 4432.45 kPa(a)
Reservoir Temperature 31.25 °C

Service Company Quality Wireline Services Ltd.
Representative IVORY HERMAN
Prepared By DOLLCO Well Data Services
Qualified By RICK DOLL
Report Date 2012/12/31

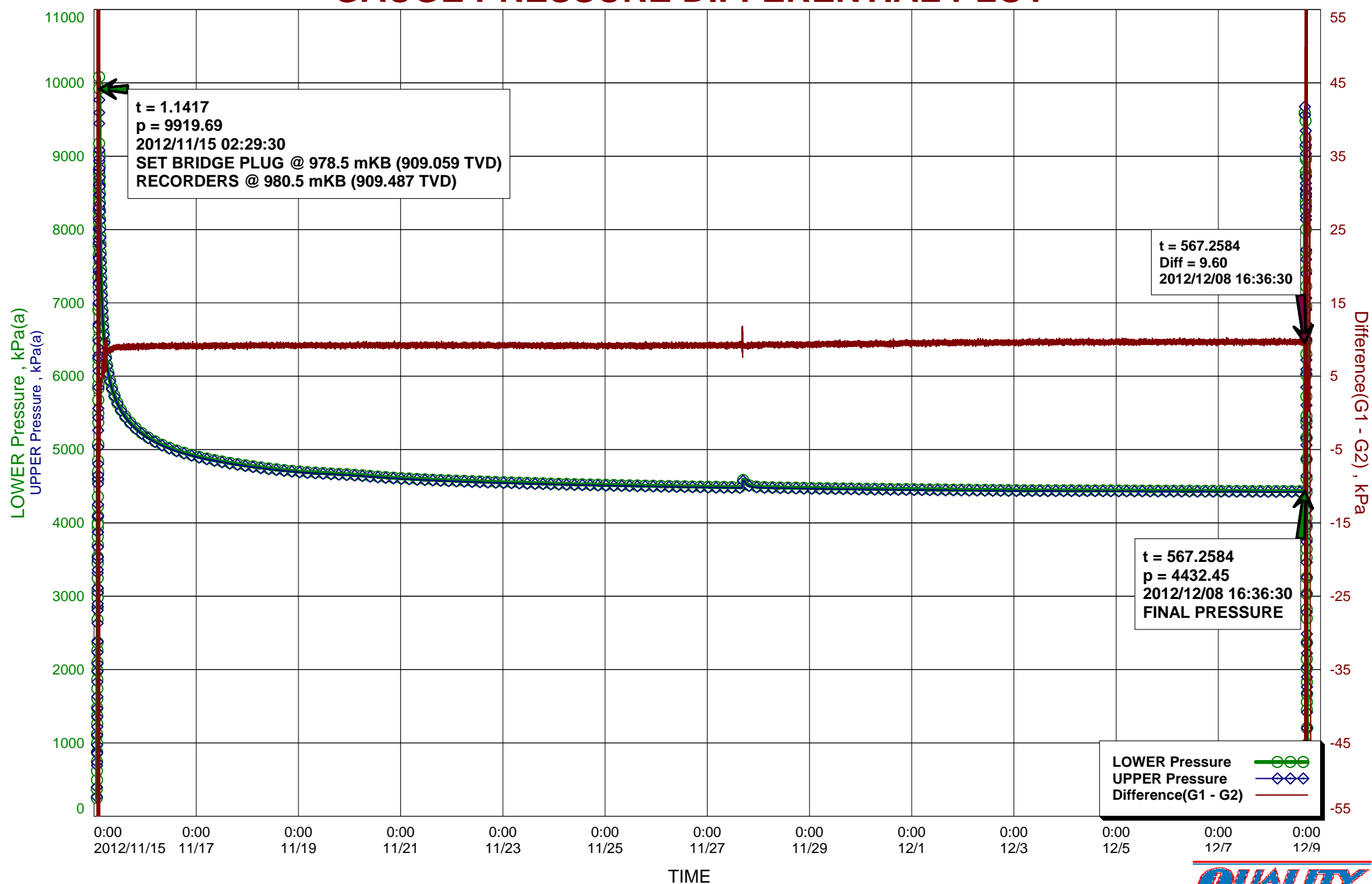
RECORDERS RUN BELOW A BRIDGE PLUG BY A DRILLING RIG,
AND THEN PULLED BY A SERVICE RIG
OPEN HOLE: 1027 - 2292 mKBMD (914.78 - 909.74 mKBMD



RESERVOIR PRESSURE SURVEY



GAUGE PRESSURE DIFFERENTIAL PLOT



Recorder Information

Company Name	TUNDRA OIL & GAS PARTNERSHIP
Unique Well ID	102/08-09-008-29W1/00
Well Name	EWART UNIT No. 1 HZNTL (5B-9) 8A-9-8-28
Formation	BAKKEN
Start Test Date	2012/11/15
Final Test Date	2012/12/08

Gauge 1

Gauge Name	LOWER	Gauge Type	ELECTRONIC
Gauge Serial Number	40424	Gauge Manufacturer	REAL TIME MEASUREMENTS
Run Depth (Log KB)	980.50 m	Gauge Model	KC2 STRAIN
Date of Last Calibration	2010/05/11	Maximum Recorder Range	20680.00 kPa
Gauge Start Date	2012/11/15	Gauge Start Time	01:21:00
Gauge Stop Date	2012/12/08	Gauge Stop Time	21:00:00
Date Gauge On Bottom	2012/11/15	Time Gauge On Bottom	02:31:00
Date Gauge Off Bottom	2012/11/15	Time Gauge Off Bottom	17:03:00

Gauge 2

Gauge Name	UPPER	Gauge Type	ELECTRONIC
Gauge Serial Number	40419	Gauge Manufacturer	REAL TIME MEASUREMENTS
Run Depth (Log KB)	980.20 m	Gauge Model	KC2 STRAIN
Date of Last Calibration	2011/09/14	Maximum Recorder Range	20680.00 kPa
Gauge Start Date	2012/11/15	Gauge Start Time	01:21:00
Gauge Stop Date	2012/12/08	Gauge Stop Time	21:00:00
Date Gauge On Bottom	2012/11/15	Time Gauge On Bottom	02:32:00
Date Gauge Off Bottom	2012/12/08	Time Gauge Off Bottom	17:03:00

RESERVOIR PRESSURE SURVEY

	LOWER Date yyyy/mm/dd	LOWER Clk Time hh:mm:ss	LOWER Time hr	LOWER Pres. kPa(a)	LOWER Temp. °C	UPPER Time hr	UPPER Pres. kPa(a)	UPPER Temp. °C
1	2012/11/15	01:21:00	0.0000	249.13	17.35	0.0000	263.55	15.49
2	2012/11/15	01:21:00	0.0000	RIH, ACTIVATE RECORDERS S/N: 40424(L) & 40419(U)				
3	2012/11/15	01:21:30	0.0084	248.29	17.62	0.0084	261.88	16.06
4	2012/11/15	02:31:00	1.1667	9065.90	27.91	1.1667	8868.03	28.04
5	2012/11/15	02:31:00	1.1667	RECORDERS ON BOTTOM @ 980.5 mKB (909.487 TVD)				
6	2012/11/15	02:31:30	1.1750	9065.13	27.84	1.1750	9001.64	27.99
7	2012/11/15	02:32:00	1.1834	9111.72	27.79	1.1834	9029.17	27.95
8	2012/11/15	02:32:00	1.1834	SET BRIDGE PLUG @ 978.5 mKB (909.059 TVD)				
9	2012/11/15	02:32:30	1.1917	8946.45	27.65	1.1917	9082.54	27.90
10	2012/11/15	03:21:30	2.0084	7362.77	27.91	2.0084	7359.15	27.98
11	2012/11/15	05:21:30	4.0084	6323.58	28.72	4.0084	6315.98	28.74
12	2012/11/15	07:21:30	6.0084	5960.11	29.29	6.0084	5951.48	29.28
13	2012/11/15	09:21:30	8.0084	5754.46	29.66	8.0084	5745.64	29.65
14	2012/11/15	11:21:30	10.0084	5613.67	29.91	10.0084	5605.00	29.86
15	2012/11/15	13:21:30	12.0084	5507.97	30.06	12.0084	5498.78	30.00
16	2012/11/15	15:21:30	14.0084	5424.74	30.16	14.0084	5415.41	30.14
17	2012/11/15	17:21:30	16.0084	5356.44	30.28	16.0084	5347.27	30.28
18	2012/11/15	19:21:30	18.0084	5298.76	30.39	18.0084	5289.66	30.39
19	2012/11/15	21:21:30	20.0084	5248.77	30.48	20.0084	5239.65	30.49
20	2012/11/15	23:21:30	22.0084	5205.00	30.55	22.0084	5195.81	30.58
21	2012/11/16	01:21:30	24.0084	5166.43	30.60	24.0084	5157.25	30.64
22	2012/11/16	03:21:30	26.0084	5131.69	30.66	26.0084	5122.70	30.71
23	2012/11/16	05:21:30	28.0084	5100.73	30.72	28.0084	5091.59	30.77
24	2012/11/16	07:21:30	30.0084	5072.76	30.76	30.0084	5063.55	30.82
25	2012/11/16	09:22:00	32.0167	5047.08	30.80	32.0084	5038.08	30.86
26	2012/11/16	11:22:00	34.0167	5023.50	30.83	34.0084	5014.35	30.90
27	2012/11/16	13:22:00	36.0167	5001.83	30.86	36.0084	4992.76	30.95
28	2012/11/16	15:22:00	38.0167	4982.11	30.90	38.0084	4972.88	30.98
29	2012/11/16	17:22:00	40.0167	4963.58	30.93	40.0084	4954.24	31.01
30	2012/11/16	19:22:00	42.0167	4946.03	30.96	42.0084	4937.28	31.04
31	2012/11/16	21:22:00	44.0167	4930.09	30.98	44.0084	4920.68	31.06
32	2012/11/16	23:22:00	46.0167	4914.89	31.00	46.0084	4905.62	31.09
33	2012/11/17	01:22:00	48.0167	4900.55	31.02	48.0084	4891.23	31.10
34	2012/11/17	03:22:00	50.0167	4887.25	31.04	50.0084	4878.12	31.13
35	2012/11/17	05:22:00	52.0167	4874.57	31.06	52.0084	4865.64	31.15
36	2012/11/17	07:22:00	54.0167	4862.85	31.07	54.0084	4853.79	31.16
37	2012/11/17	09:22:00	56.0167	4851.78	31.09	56.0084	4842.40	31.18
38	2012/11/17	11:22:00	58.0167	4840.46	31.10	58.0084	4831.66	31.19
39	2012/11/17	13:22:00	60.0167	4830.15	31.12	60.0084	4821.10	31.20
40	2012/11/17	15:22:00	62.0167	4820.18	31.13	62.0084	4811.07	31.22

LOWER Serial Number: 40424 Start Date: 2012/11/15 01:21:00 Run Depth: 980.50

UPPER Serial Number: 40419 Start Date: 2012/11/15 01:21:00 Run Depth: 980.20

Print Filter: Print every 2 hour

RESERVOIR PRESSURE SURVEY

	LOWER Date yyyy/mm/dd	LOWER Clk Time hh:mm:ss	LOWER Time hr	LOWER Pres. kPa(a)	LOWER Temp. °C	UPPER Time hr	UPPER Pres. kPa(a)	UPPER Temp. °C
41	2012/11/17	17:22:00	64.0167	4810.64	31.15	64.0167	4801.38	31.22
42	2012/11/17	19:22:00	66.0167	4801.48	31.16	66.0167	4792.10	31.23
43	2012/11/17	21:22:00	68.0167	4792.50	31.17	68.0167	4783.27	31.25
44	2012/11/17	23:22:00	70.0167	4783.67	31.17	70.0167	4774.50	31.26
45	2012/11/18	01:22:00	72.0167	4775.23	31.18	72.0167	4766.08	31.26
46	2012/11/18	03:22:00	74.0167	4766.95	31.19	74.0167	4757.98	31.27
47	2012/11/18	05:22:00	76.0167	4759.53	31.20	76.0167	4750.37	31.27
48	2012/11/18	07:22:00	78.0167	4752.08	31.21	78.0167	4742.82	31.29
49	2012/11/18	09:22:00	80.0167	4745.02	31.21	80.0167	4735.62	31.29
50	2012/11/18	11:22:00	82.0167	4737.94	31.22	82.0167	4729.03	31.30
51	2012/11/18	13:22:00	84.0167	4731.45	31.22	84.0167	4722.33	31.31
52	2012/11/18	15:22:00	86.0167	4724.86	31.23	86.0167	4715.73	31.31
53	2012/11/18	17:22:00	88.0167	4718.65	31.23	88.0167	4709.60	31.31
54	2012/11/18	19:22:00	90.0167	4713.00	31.24	90.0167	4703.89	31.32
55	2012/11/18	21:22:00	92.0167	4707.80	31.24	92.0167	4698.37	31.32
56	2012/11/18	23:22:00	94.0167	4702.56	31.25	94.0167	4693.19	31.32
57	2012/11/19	01:22:00	96.0167	4697.74	31.25	96.0167	4688.36	31.33
58	2012/11/19	03:22:00	98.0167	4693.14	31.25	98.0167	4684.11	31.33
59	2012/11/19	05:22:00	100.0167	4689.29	31.25	100.0167	4679.92	31.34
60	2012/11/19	07:22:00	102.0167	4685.70	31.26	102.0167	4676.47	31.33
61	2012/11/19	09:22:00	104.0167	4682.23	31.27	104.0167	4673.27	31.34
62	2012/11/19	11:22:00	106.0167	4679.18	31.27	106.0167	4670.22	31.35
63	2012/11/19	13:22:00	108.0167	4676.56	31.27	108.0167	4667.45	31.34
64	2012/11/19	15:22:00	110.0167	4673.86	31.27	110.0167	4664.69	31.35
65	2012/11/19	17:22:00	112.0167	4670.41	31.27	112.0167	4661.09	31.35
66	2012/11/19	19:22:00	114.0167	4667.23	31.27	114.0167	4657.94	31.35
67	2012/11/19	21:22:00	116.0167	4664.16	31.28	116.0167	4655.08	31.36
68	2012/11/19	23:22:00	118.0167	4660.70	31.28	118.0167	4651.64	31.36
69	2012/11/20	01:22:00	120.0167	4657.15	31.28	120.0167	4647.84	31.36
70	2012/11/20	03:22:00	122.0167	4653.39	31.28	122.0167	4644.24	31.36
71	2012/11/20	05:22:00	124.0167	4649.48	31.29	124.0167	4640.14	31.37
72	2012/11/20	07:22:00	126.0167	4644.69	31.29	126.0167	4635.53	31.36
73	2012/11/20	09:22:00	128.0167	4640.37	31.29	128.0167	4631.28	31.37
74	2012/11/20	11:22:00	130.0167	4635.88	31.29	130.0167	4626.47	31.36
75	2012/11/20	13:22:00	132.0167	4631.29	31.29	132.0167	4621.70	31.36
76	2012/11/20	15:22:00	134.0167	4626.49	31.29	134.0167	4617.43	31.37
77	2012/11/20	17:22:00	136.0167	4622.19	31.30	136.0167	4612.90	31.38
78	2012/11/20	19:22:00	138.0167	4618.43	31.30	138.0167	4608.87	31.38
79	2012/11/20	21:22:00	140.0167	4614.83	31.30	140.0167	4605.51	31.38
80	2012/11/20	23:22:00	142.0167	4611.65	31.30	142.0167	4602.36	31.38

LOWER Serial Number: 40424 Start Date: 2012/11/15 01:21:00 Run Depth: 980.50

UPPER Serial Number: 40419 Start Date: 2012/11/15 01:21:00 Run Depth: 980.20

Print Filter: Print every 2 hour

RESERVOIR PRESSURE SURVEY

	LOWER Date yyyy/mm/dd	LOWER Clk Time hh:mm:ss	LOWER Time hr	LOWER Pres. kPa(a)	LOWER Temp. °C	UPPER Time hr	UPPER Pres. kPa(a)	UPPER Temp. °C
81	2012/11/21	01:22:00	144.0167	4608.34	31.30	144.0167	4599.32	31.38
82	2012/11/21	03:22:00	146.0167	4605.13	31.30	146.0167	4596.09	31.39
83	2012/11/21	05:22:00	148.0167	4602.31	31.30	148.0167	4593.07	31.38
84	2012/11/21	07:22:00	150.0167	4599.33	31.30	150.0167	4589.87	31.37
85	2012/11/21	09:22:00	152.0167	4596.35	31.30	152.0167	4586.90	31.38
86	2012/11/21	11:22:00	154.0167	4593.66	31.30	154.0167	4584.40	31.39
87	2012/11/21	13:22:00	156.0167	4590.89	31.30	156.0167	4581.58	31.38
88	2012/11/21	15:22:00	158.0167	4588.16	31.30	158.0167	4578.82	31.38
89	2012/11/21	17:22:00	160.0167	4585.50	31.30	160.0167	4576.08	31.38
90	2012/11/21	19:22:00	162.0167	4582.92	31.30	162.0167	4573.89	31.39
91	2012/11/21	21:22:00	164.0167	4580.70	31.30	164.0167	4571.54	31.39
92	2012/11/21	23:22:00	166.0167	4578.48	31.30	166.0167	4569.05	31.39
93	2012/11/22	01:22:00	168.0167	4575.88	31.30	168.0167	4566.87	31.39
94	2012/11/22	03:22:00	170.0167	4574.10	31.30	170.0167	4565.07	31.39
95	2012/11/22	05:22:00	172.0167	4571.74	31.31	172.0167	4562.75	31.39
96	2012/11/22	07:22:00	174.0167	4569.70	31.31	174.0167	4560.51	31.39
97	2012/11/22	09:22:00	176.0167	4567.71	31.31	176.0167	4558.80	31.39
98	2012/11/22	11:22:00	178.0167	4565.78	31.30	178.0167	4556.84	31.38
99	2012/11/22	13:22:00	180.0167	4563.81	31.30	180.0167	4554.52	31.39
100	2012/11/22	15:22:00	182.0167	4562.08	31.30	182.0167	4552.82	31.38
101	2012/11/22	17:22:00	184.0167	4560.35	31.30	184.0167	4551.10	31.38
102	2012/11/22	19:22:00	186.0167	4558.28	31.30	186.0167	4549.06	31.39
103	2012/11/22	21:22:00	188.0167	4556.46	31.31	188.0167	4547.18	31.39
104	2012/11/22	23:22:00	190.0167	4554.95	31.30	190.0167	4545.54	31.39
105	2012/11/23	01:22:00	192.0167	4553.18	31.30	192.0167	4543.96	31.38
106	2012/11/23	03:22:00	194.0167	4551.34	31.31	194.0167	4542.22	31.38
107	2012/11/23	05:22:00	196.0167	4549.70	31.30	196.0167	4540.34	31.38
108	2012/11/23	07:22:00	198.0167	4547.95	31.30	198.0167	4539.03	31.39
109	2012/11/23	09:22:00	200.0167	4546.30	31.30	200.0167	4537.22	31.39
110	2012/11/23	11:22:00	202.0167	4544.73	31.30	202.0167	4535.50	31.39
111	2012/11/23	13:22:00	204.0167	4542.79	31.30	204.0167	4533.99	31.39
112	2012/11/23	15:22:00	206.0167	4541.60	31.30	206.0167	4532.22	31.39
113	2012/11/23	17:22:00	208.0167	4539.80	31.30	208.0167	4530.64	31.39
114	2012/11/23	19:22:00	210.0167	4538.20	31.30	210.0167	4528.91	31.38
115	2012/11/23	21:22:00	212.0167	4536.50	31.30	212.0167	4527.19	31.38
116	2012/11/23	23:22:00	214.0167	4534.89	31.30	214.0167	4525.56	31.38
117	2012/11/24	01:22:00	216.0167	4533.36	31.30	216.0167	4524.14	31.39
118	2012/11/24	03:22:00	218.0167	4532.02	31.30	218.0167	4522.60	31.38
119	2012/11/24	05:22:00	220.0167	4530.28	31.30	220.0167	4521.34	31.39
120	2012/11/24	07:22:00	222.0167	4528.87	31.30	222.0167	4519.64	31.38

LOWER Serial Number: 40424 Start Date: 2012/11/15 01:21:00 Run Depth: 980.50

UPPER Serial Number: 40419 Start Date: 2012/11/15 01:21:00 Run Depth: 980.20

Print Filter: Print every 2 hour

RESERVOIR PRESSURE SURVEY

	LOWER Date yyyy/mm/dd	LOWER Clk Time hh:mm:ss	LOWER Time hr	LOWER Pres. kPa(a)	LOWER Temp. °C	UPPER Time hr	UPPER Pres. kPa(a)	UPPER Temp. °C
121	2012/11/24	09:22:00	224.0167	4527.23	31.30	224.0167	4518.28	31.38
122	2012/11/24	11:22:00	226.0167	4525.93	31.30	226.0167	4516.89	31.38
123	2012/11/24	13:22:00	228.0167	4524.52	31.30	228.0167	4515.28	31.38
124	2012/11/24	15:22:00	230.0167	4523.37	31.30	230.0167	4514.06	31.38
125	2012/11/24	17:22:00	232.0167	4522.05	31.30	232.0167	4513.06	31.38
126	2012/11/24	19:22:00	234.0167	4520.93	31.30	234.0167	4511.82	31.38
127	2012/11/24	21:22:00	236.0167	4519.25	31.30	236.0167	4510.06	31.38
128	2012/11/24	23:22:00	238.0167	4518.08	31.30	238.0167	4508.98	31.38
129	2012/11/25	01:22:00	240.0167	4516.96	31.30	240.0167	4507.91	31.38
130	2012/11/25	03:22:00	242.0167	4515.79	31.30	242.0167	4506.86	31.38
131	2012/11/25	05:22:00	244.0167	4514.79	31.30	244.0167	4505.77	31.38
132	2012/11/25	07:22:00	246.0167	4513.69	31.30	246.0167	4504.52	31.38
133	2012/11/25	09:22:00	248.0167	4512.59	31.30	248.0167	4503.13	31.38
134	2012/11/25	11:22:00	250.0167	4511.33	31.30	250.0167	4502.41	31.38
135	2012/11/25	13:22:00	252.0167	4510.18	31.30	252.0167	4500.95	31.38
136	2012/11/25	15:22:00	254.0167	4509.27	31.30	254.0167	4499.97	31.38
137	2012/11/25	17:22:30	256.0250	4507.95	31.30	256.0250	4499.04	31.38
138	2012/11/25	19:22:30	258.0250	4507.13	31.30	258.0250	4497.96	31.38
139	2012/11/25	21:22:30	260.0250	4505.78	31.30	260.0250	4496.81	31.38
140	2012/11/25	23:22:30	262.0250	4504.88	31.30	262.0250	4495.40	31.37
141	2012/11/26	01:22:30	264.0250	4503.63	31.30	264.0250	4494.43	31.37
142	2012/11/26	03:22:30	266.0250	4502.71	31.30	266.0250	4493.81	31.38
143	2012/11/26	05:22:30	268.0250	4502.04	31.30	268.0250	4492.96	31.38
144	2012/11/26	07:22:30	270.0250	4500.61	31.30	270.0250	4491.78	31.37
145	2012/11/26	09:22:30	272.0250	4499.90	31.29	272.0250	4490.47	31.37
146	2012/11/26	11:22:30	274.0250	4498.58	31.30	274.0250	4489.51	31.37
147	2012/11/26	13:22:30	276.0250	4497.53	31.29	276.0250	4488.25	31.37
148	2012/11/26	15:22:30	278.0250	4496.59	31.30	278.0250	4487.49	31.37
149	2012/11/26	17:22:30	280.0250	4495.70	31.30	280.0250	4486.63	31.37
150	2012/11/26	19:22:30	282.0250	4494.59	31.29	282.0250	4485.17	31.37
151	2012/11/26	21:22:30	284.0250	4493.69	31.29	284.0250	4484.51	31.37
152	2012/11/26	23:22:30	286.0250	4492.58	31.29	286.0250	4483.35	31.37
153	2012/11/27	01:22:30	288.0250	4491.58	31.29	288.0250	4482.36	31.37
154	2012/11/27	03:22:30	290.0250	4490.91	31.29	290.0250	4481.70	31.36
155	2012/11/27	05:22:30	292.0250	4490.08	31.29	292.0250	4480.58	31.36
156	2012/11/27	07:22:30	294.0250	4489.04	31.29	294.0250	4480.13	31.37
157	2012/11/27	09:22:30	296.0250	4488.25	31.29	296.0250	4479.05	31.37
158	2012/11/27	11:22:30	298.0250	4487.43	31.29	298.0250	4478.22	31.36
159	2012/11/27	13:22:30	300.0250	4486.50	31.29	300.0250	4477.20	31.37
160	2012/11/27	15:22:30	302.0250	4485.78	31.29	302.0250	4476.56	31.37

LOWER Serial Number: 40424 Start Date: 2012/11/15 01:21:00 Run Depth: 980.50

UPPER Serial Number: 40419 Start Date: 2012/11/15 01:21:00 Run Depth: 980.20

Print Filter: Print every 2 hour

RESERVOIR PRESSURE SURVEY

	LOWER Date yyyy/mm/dd	LOWER Clk Time hh:mm:ss	LOWER Time hr	LOWER Pres. kPa(a)	LOWER Temp. °C	UPPER Time hr	UPPER Pres. kPa(a)	UPPER Temp. °C
161	2012/11/27	17:22:30	304.0250	4578.92	31.29	304.0250	4569.90	31.37
162	2012/11/27	19:22:30	306.0250	4515.23	31.29	306.0250	4505.98	31.36
163	2012/11/27	21:22:30	308.0250	4500.03	31.29	308.0250	4490.85	31.36
164	2012/11/27	23:22:30	310.0250	4493.50	31.29	310.0250	4484.03	31.36
165	2012/11/28	01:22:30	312.0250	4490.25	31.29	312.0250	4480.90	31.36
166	2012/11/28	03:22:30	314.0250	4487.58	31.29	314.0250	4478.33	31.35
167	2012/11/28	05:22:30	316.0250	4485.80	31.29	316.0250	4476.60	31.35
168	2012/11/28	07:22:30	318.0250	4484.41	31.29	318.0250	4474.86	31.35
169	2012/11/28	09:22:30	320.0250	4482.89	31.29	320.0250	4473.62	31.35
170	2012/11/28	11:22:30	322.0250	4481.91	31.29	322.0250	4472.59	31.35
171	2012/11/28	13:22:30	324.0250	4480.84	31.29	324.0250	4471.64	31.35
172	2012/11/28	15:22:30	326.0250	4479.76	31.28	326.0250	4470.54	31.35
173	2012/11/28	17:22:30	328.0250	4478.99	31.28	328.0250	4469.57	31.35
174	2012/11/28	19:22:30	330.0250	4477.96	31.28	330.0250	4468.48	31.35
175	2012/11/28	21:22:30	332.0250	4476.90	31.28	332.0250	4467.67	31.35
176	2012/11/28	23:22:30	334.0250	4475.86	31.28	334.0250	4466.67	31.35
177	2012/11/29	01:22:30	336.0250	4475.07	31.28	336.0250	4465.58	31.34
178	2012/11/29	03:22:30	338.0250	4474.17	31.28	338.0250	4464.83	31.35
179	2012/11/29	05:22:30	340.0250	4473.46	31.28	340.0250	4464.04	31.34
180	2012/11/29	07:22:30	342.0250	4472.62	31.28	342.0250	4463.38	31.35
181	2012/11/29	09:22:30	344.0250	4471.94	31.28	344.0250	4462.74	31.35
182	2012/11/29	11:22:30	346.0250	4471.34	31.28	346.0250	4461.85	31.34
183	2012/11/29	13:22:30	348.0250	4470.45	31.28	348.0250	4460.71	31.34
184	2012/11/29	15:22:30	350.0250	4469.75	31.28	350.0250	4460.16	31.35
185	2012/11/29	17:22:30	352.0250	4468.86	31.28	352.0250	4459.62	31.34
186	2012/11/29	19:22:30	354.0250	4468.01	31.28	354.0250	4458.76	31.35
187	2012/11/29	21:22:30	356.0250	4467.50	31.28	356.0250	4457.99	31.34
188	2012/11/29	23:22:30	358.0250	4466.71	31.28	358.0250	4457.19	31.34
189	2012/11/30	01:22:30	360.0250	4465.69	31.28	360.0250	4456.43	31.34
190	2012/11/30	03:22:30	362.0250	4464.99	31.28	362.0250	4455.84	31.34
191	2012/11/30	05:22:30	364.0250	4464.61	31.28	364.0250	4455.36	31.34
192	2012/11/30	07:22:30	366.0250	4463.92	31.28	366.0250	4454.42	31.35
193	2012/11/30	09:22:30	368.0250	4463.48	31.28	368.0250	4453.83	31.34
194	2012/11/30	11:22:30	370.0250	4462.42	31.28	370.0250	4452.89	31.34
195	2012/11/30	13:22:30	372.0250	4461.80	31.28	372.0250	4452.27	31.34
196	2012/11/30	15:22:30	374.0250	4461.10	31.28	374.0250	4451.49	31.33
197	2012/11/30	17:22:30	376.0250	4460.74	31.28	376.0250	4451.20	31.34
198	2012/11/30	19:22:30	378.0250	4459.85	31.28	378.0250	4450.31	31.34
199	2012/11/30	21:22:30	380.0250	4459.39	31.28	380.0250	4449.88	31.33
200	2012/11/30	23:22:30	382.0250	4458.42	31.28	382.0250	4448.95	31.33

LOWER Serial Number: 40424 Start Date: 2012/11/15 01:21:00 Run Depth: 980.50

UPPER Serial Number: 40419 Start Date: 2012/11/15 01:21:00 Run Depth: 980.20

Print Filter: Print every 2 hour

RESERVOIR PRESSURE SURVEY

	LOWER Date yyyy/mm/dd	LOWER Clk Time hh:mm:ss	LOWER Time hr	LOWER Pres. kPa(a)	LOWER Temp. °C	UPPER Time hr	UPPER Pres. kPa(a)	UPPER Temp. °C
201	2012/12/01	01:22:30	384.0250	4457.80	31.28	384.0250	4448.35	31.33
202	2012/12/01	03:22:30	386.0250	4457.12	31.28	386.0250	4447.66	31.33
203	2012/12/01	05:22:30	388.0250	4456.65	31.28	388.0250	4447.14	31.33
204	2012/12/01	07:22:30	390.0250	4456.26	31.27	390.0250	4446.84	31.33
205	2012/12/01	09:22:30	392.0250	4455.74	31.28	392.0250	4446.26	31.33
206	2012/12/01	11:22:30	394.0250	4455.37	31.27	394.0250	4445.86	31.33
207	2012/12/01	13:22:30	396.0250	4454.72	31.27	396.0250	4444.97	31.33
208	2012/12/01	15:22:30	398.0250	4454.17	31.28	398.0250	4444.68	31.33
209	2012/12/01	17:22:30	400.0250	4453.72	31.27	400.0250	4444.11	31.33
210	2012/12/01	19:22:30	402.0250	4453.40	31.27	402.0250	4443.72	31.33
211	2012/12/01	21:22:30	404.0250	4452.62	31.27	404.0250	4443.03	31.33
212	2012/12/01	23:22:30	406.0250	4451.82	31.27	406.0250	4442.21	31.32
213	2012/12/02	01:22:30	408.0250	4451.21	31.27	408.0250	4441.66	31.32
214	2012/12/02	03:22:30	410.0250	4450.73	31.27	410.0250	4441.35	31.32
215	2012/12/02	05:22:30	412.0250	4450.38	31.27	412.0250	4440.95	31.33
216	2012/12/02	07:22:30	414.0250	4449.70	31.27	414.0250	4440.19	31.32
217	2012/12/02	09:22:30	416.0250	4449.28	31.27	416.0250	4439.83	31.33
218	2012/12/02	11:22:30	418.0250	4448.88	31.27	418.0250	4439.34	31.32
219	2012/12/02	13:22:30	420.0250	4448.34	31.27	420.0250	4438.70	31.33
220	2012/12/02	15:22:30	422.0250	4447.72	31.27	422.0250	4438.08	31.33
221	2012/12/02	17:22:30	424.0250	4447.14	31.27	424.0250	4437.52	31.32
222	2012/12/02	19:22:30	426.0250	4446.61	31.27	426.0250	4437.03	31.32
223	2012/12/02	21:22:30	428.0250	4446.00	31.27	428.0250	4436.31	31.32
224	2012/12/02	23:22:30	430.0250	4445.40	31.27	430.0250	4436.12	31.32
225	2012/12/03	01:22:30	432.0250	4445.00	31.27	432.0250	4435.49	31.32
226	2012/12/03	03:22:30	434.0250	4444.76	31.27	434.0250	4435.08	31.32
227	2012/12/03	05:22:30	436.0250	4444.70	31.27	436.0250	4434.96	31.32
228	2012/12/03	07:22:30	438.0250	4444.50	31.27	438.0250	4434.68	31.32
229	2012/12/03	09:22:30	440.0250	4444.38	31.27	440.0250	4434.97	31.32
230	2012/12/03	11:22:30	442.0250	4444.02	31.27	442.0250	4434.79	31.32
231	2012/12/03	13:22:30	444.0250	4444.03	31.27	444.0250	4434.62	31.32
232	2012/12/03	15:22:30	446.0250	4444.06	31.27	446.0250	4434.46	31.32
233	2012/12/03	17:22:30	448.0250	4443.72	31.27	448.0250	4434.21	31.32
234	2012/12/03	19:22:30	450.0250	4443.54	31.27	450.0250	4434.27	31.32
235	2012/12/03	21:22:30	452.0250	4443.65	31.27	452.0250	4433.86	31.31
236	2012/12/03	23:22:30	454.0250	4443.36	31.27	454.0250	4433.86	31.31
237	2012/12/04	01:22:30	456.0250	4443.56	31.27	456.0250	4433.63	31.31
238	2012/12/04	03:22:30	458.0250	4443.09	31.27	458.0250	4433.48	31.32
239	2012/12/04	05:22:30	460.0250	4443.04	31.27	460.0250	4433.48	31.32
240	2012/12/04	07:22:30	462.0250	4443.13	31.27	462.0250	4433.39	31.32

LOWER Serial Number: 40424 Start Date: 2012/11/15 01:21:00 Run Depth: 980.50

UPPER Serial Number: 40419 Start Date: 2012/11/15 01:21:00 Run Depth: 980.20

Print Filter: Print every 2 hour

RESERVOIR PRESSURE SURVEY

	LOWER Date yyyy/mm/dd	LOWER Clk Time hh:mm:ss	LOWER Time hr	LOWER Pres. kPa(a)	LOWER Temp. °C	UPPER Time hr	UPPER Pres. kPa(a)	UPPER Temp. °C
241	2012/12/04	09:22:30	464.0250	4443.01	31.27	464.0250	4433.30	31.32
242	2012/12/04	11:22:30	466.0250	4442.81	31.27	466.0250	4433.15	31.32
243	2012/12/04	13:22:30	468.0250	4442.76	31.26	468.0250	4433.11	31.32
244	2012/12/04	15:22:30	470.0250	4442.54	31.27	470.0250	4432.89	31.32
245	2012/12/04	17:22:30	472.0250	4442.09	31.26	472.0250	4432.47	31.32
246	2012/12/04	19:22:30	474.0250	4442.08	31.27	474.0250	4432.45	31.31
247	2012/12/04	21:22:30	476.0250	4441.62	31.27	476.0250	4432.10	31.31
248	2012/12/04	23:22:30	478.0250	4441.56	31.26	478.0250	4431.76	31.32
249	2012/12/05	01:22:30	480.0250	4441.23	31.26	480.0250	4431.31	31.31
250	2012/12/05	03:22:30	482.0250	4440.72	31.26	482.0250	4431.20	31.31
251	2012/12/05	05:22:30	484.0250	4440.46	31.26	484.0250	4430.53	31.31
252	2012/12/05	07:22:30	486.0250	4440.05	31.26	486.0250	4430.32	31.31
253	2012/12/05	09:22:30	488.0250	4439.71	31.26	488.0250	4430.22	31.31
254	2012/12/05	11:22:30	490.0250	4439.48	31.26	490.0250	4430.01	31.31
255	2012/12/05	13:22:30	492.0250	4439.26	31.26	492.0250	4429.38	31.31
256	2012/12/05	15:22:30	494.0250	4438.80	31.26	494.0250	4429.22	31.31
257	2012/12/05	17:22:30	496.0250	4438.69	31.26	496.0250	4428.69	31.31
258	2012/12/05	19:22:30	498.0250	4438.36	31.26	498.0250	4428.64	31.31
259	2012/12/05	21:22:30	500.0250	4437.91	31.26	500.0250	4428.28	31.30
260	2012/12/05	23:22:30	502.0250	4437.91	31.26	502.0250	4428.31	31.31
261	2012/12/06	01:22:30	504.0250	4437.84	31.26	504.0250	4428.10	31.31
262	2012/12/06	03:22:30	506.0250	4437.84	31.26	506.0250	4428.08	31.31
263	2012/12/06	05:22:30	508.0250	4437.63	31.26	508.0250	4427.95	31.31
264	2012/12/06	07:22:30	510.0250	4437.25	31.26	510.0250	4427.62	31.31
265	2012/12/06	09:22:30	512.0250	4436.98	31.26	512.0250	4427.47	31.31
266	2012/12/06	11:22:30	514.0250	4437.14	31.26	514.0250	4427.35	31.31
267	2012/12/06	13:22:30	516.0250	4436.82	31.26	516.0250	4427.26	31.31
268	2012/12/06	15:22:30	518.0250	4436.62	31.26	518.0250	4427.04	31.31
269	2012/12/06	17:22:30	520.0250	4436.37	31.26	520.0250	4426.77	31.31
270	2012/12/06	19:22:30	522.0250	4435.96	31.26	522.0250	4426.29	31.31
271	2012/12/06	21:22:30	524.0250	4435.78	31.26	524.0250	4426.27	31.30
272	2012/12/06	23:22:30	526.0250	4435.92	31.26	526.0250	4426.15	31.31
273	2012/12/07	01:22:30	528.0250	4435.76	31.26	528.0250	4425.77	31.31
274	2012/12/07	03:22:30	530.0250	4435.37	31.26	530.0250	4425.75	31.31
275	2012/12/07	05:22:30	532.0250	4435.25	31.26	532.0250	4425.64	31.31
276	2012/12/07	07:22:30	534.0250	4435.07	31.25	534.0250	4425.42	31.30
277	2012/12/07	09:22:30	536.0250	4434.98	31.26	536.0250	4425.42	31.31
278	2012/12/07	11:22:30	538.0250	4434.85	31.26	538.0250	4425.21	31.30
279	2012/12/07	13:22:30	540.0250	4434.56	31.26	540.0250	4425.02	31.30
280	2012/12/07	15:22:30	542.0250	4434.22	31.26	542.0250	4424.72	31.30

LOWER Serial Number: 40424 Start Date: 2012/11/15 01:21:00 Run Depth: 980.50

UPPER Serial Number: 40419 Start Date: 2012/11/15 01:21:00 Run Depth: 980.20

Print Filter: Print every 2 hour

RESERVOIR PRESSURE SURVEY

	LOWER Date yyyy/mm/dd	LOWER Clk Time hh:mm:ss	LOWER Time hr	LOWER Pres. kPa(a)	LOWER Temp. °C	UPPER Time hr	UPPER Pres. kPa(a)	UPPER Temp. °C
281	2012/12/07	17:22:30	544.0250	4434.12	31.26	544.0250	4424.38	31.31
282	2012/12/07	19:22:30	546.0250	4433.86	31.25	546.0250	4424.21	31.30
283	2012/12/07	21:22:30	548.0250	4433.50	31.26	548.0250	4423.96	31.30
284	2012/12/07	23:22:30	550.0250	4433.41	31.25	550.0250	4423.68	31.31
285	2012/12/08	01:22:30	552.0250	4433.20	31.26	552.0250	4423.35	31.31
286	2012/12/08	03:22:30	554.0250	4432.82	31.26	554.0250	4423.32	31.30
287	2012/12/08	05:22:30	556.0250	4432.81	31.25	556.0250	4423.07	31.31
288	2012/12/08	07:22:30	558.0250	4432.69	31.25	558.0250	4422.98	31.31
289	2012/12/08	09:22:30	560.0250	4432.49	31.25	560.0250	4422.81	31.31
290	2012/12/08	11:22:30	562.0250	4432.40	31.25	562.0250	4422.78	31.30
291	2012/12/08	13:22:30	564.0250	4432.31	31.25	564.0250	4422.57	31.30
292	2012/12/08	15:22:30	566.0250	4432.24	31.25	566.0250	4422.48	31.30
293	2012/12/08	16:36:30	567.2584	4432.45	31.25	567.2584	4422.85	31.30
294	2012/12/08	16:36:30	567.2584	FINAL PRESSURE, UNSETTING BRIDGE PLUG				
295	2012/12/08	16:37:00	567.2667	9589.23	31.30	567.2667	9675.19	31.36
296	2012/12/08	16:37:00	567.2667	BRIDGE PLUG UNSET				
297	2012/12/08	16:37:30	567.2750	9604.94	31.25	567.2750	9612.32	31.32
298	2012/12/08	17:03:00	567.7000	9398.50	29.33	567.7000	9366.88	29.40
299	2012/12/08	17:03:00	567.7000	PULL OUT OF HOLE				
300	2012/12/08	17:03:30	567.7084	9130.08	29.09	567.7084	9376.95	29.13
301	2012/12/08	17:22:30	568.0250	5378.96	22.04	568.0250	5304.91	22.02
302	2012/12/08	18:12:00	568.8500	100.26	3.41	568.8500	94.56	2.64
303	2012/12/08	18:12:00	568.8500	TOOLS AT SURFACE				
304	2012/12/08	18:12:30	568.8584	100.13	3.20	568.8584	94.57	2.19
305	2012/12/08	19:22:30	570.0250	75.46	-15.61	570.0250	119.63	-16.53
306	2012/12/08	21:00:00	571.6500	69.83	-17.83	571.6500	148.08	-17.91

LOWER Serial Number: 40424 Start Date: 2012/11/15 01:21:00 Run Depth: 980.50

UPPER Serial Number: 40419 Start Date: 2012/11/15 01:21:00 Run Depth: 980.20

Print Filter: Print every 2 hour



DATE: November 15 th - December 8 th , 2012	COMPANY: Tundra Oil & Gas Partnership
WELLNAME: Ewart Unit #1	ADDRESS: Virden, MB
LOCATION: (5-9) 8-9-8-28 W1	UWI:102/08-09-008-28W1.00
FIELD: Ewart Unit #1	FORMATION: Bakken
CO HQ REP: Craig Lane	PHONE: 1204 748 5894
FIELD REP: Brent Dalziel	PHONE: 1204 522 0864
REPORTS TO (NAME & EMAIL ADDRESS): Eric Bjornsson - eric.bjornsson@tundraoilandgas.com Tyler Routledge - tyler.routledge@tundraoilandgas.com Tim Howell - tim.howell@tundraoilandgas.com Craig Lane - craig.lane@tundraoilandgas.com Bill Jenkins - bill.jenkins@tundraoilandgas.com Adam Berke - adam.berke@tundraoilandgas.com	

STATUS: Oil well		TEST TYPE: Bridge Plug
ESTIMATED H2S CONTENT: <10 ppm		ESTIMATED CO2 CONTENT: <10 ppm
PRODUCING THROUGH: Tubing		SHUT IN TIME/DATE: See Description
KOP: 738.6 mKB	TVD: 917.25 mKB	LICENCE #: 9066
PBTD: N/A	TD: mKB	WELL TYPE: Horizontal
CASING SIZE: 177.8 mm	CSG WEIGHT: 34.23 / 29.76 kg/m	CSG DEPTH: 1027 mKB
TUBING SIZE: N/A	TBG WEIGHT: N/A	TBG DEPTH: N/A
Elevations KB: 501.65 m	GRD: 498.26 m	CF: 4.10 m

PRODUCING INTERVAL

TYPE: Open Hole	SIZE: N/A	INTERVAL: 1027 - 2292 mKB
-----------------	-----------	---------------------------

RECORDER INFORMATION

TOP S/N: 40419	FILE NAME: (5-9) 8-9-8-28 W1	RANGE: 0 - 20,680 kpa
BOTTOM S/N: 40424	FILE NAME: (5-9) 8-9-8-28 W1	RANGE: 0 - 20,680 kpa
TOP BATTERY S/N: N/A	BOTTOM BATTERY S/N: N/A	
CONNECT TIME: November 15 th , 2012 01:20:30	DISCONNECT TIME: December 11 th , 2012 13:33:00	

SURFACE TEMP: -27	LEASE CONDITION: Good
WIRELINE OPERATOR: Ivory Herman	PHONE: 1306 371 5613
WIRELINE ASSISTANT: N/A	
DIRECTIONS: N/A	

DWG WELL HEAD PRESSURES:

TUBING (before survey): N/A	CASING (before survey): N/A
TUBING (after survey): N/A	CASING (after survey): N/A

FLUID LEVEL: N/A	RUN DEPTH: See Description
TIME ON BOTTOM: See Description	TIME OFF BOTTOM: See Description

GRADIENT STOPS

DEPTH mKB:	N/A	FROM:	N/A	UNTIL:	N/A
------------	-----	-------	-----	--------	-----

COMMENTS: Tools were ran in the well by a drilling rig to collect the BHP + BHT below a bridge plug. Tools were than pulled by a service rig.

DESCRIPTION OF WORK DONE:

Tools were ran in the well by a drilling rig to collect the BHP + BHT below a bridge plug. Tools were than pulled by a service rig.

November 15th, 2012

01:20:30 - Run in hole

02:31:00 - On bottom

02:32:00 - Bridge plug set @978.5 mKB

December 8th, 2012

16:36:30 - FINAL STABLE BHP + BHT

16:37:00 - Bridge plug un-set

17:03:00 - POOH

18:12:00 - Surface

December 11th, 2012

13:33:00 - Download data