

NORTH VIRDEN SCALLION UNIT NO. 2

WATERFLOOD EOR PROJECT

ANNUAL REPORT FOR 2010

July 28, 2011

Tundra Oil and Gas Partnership

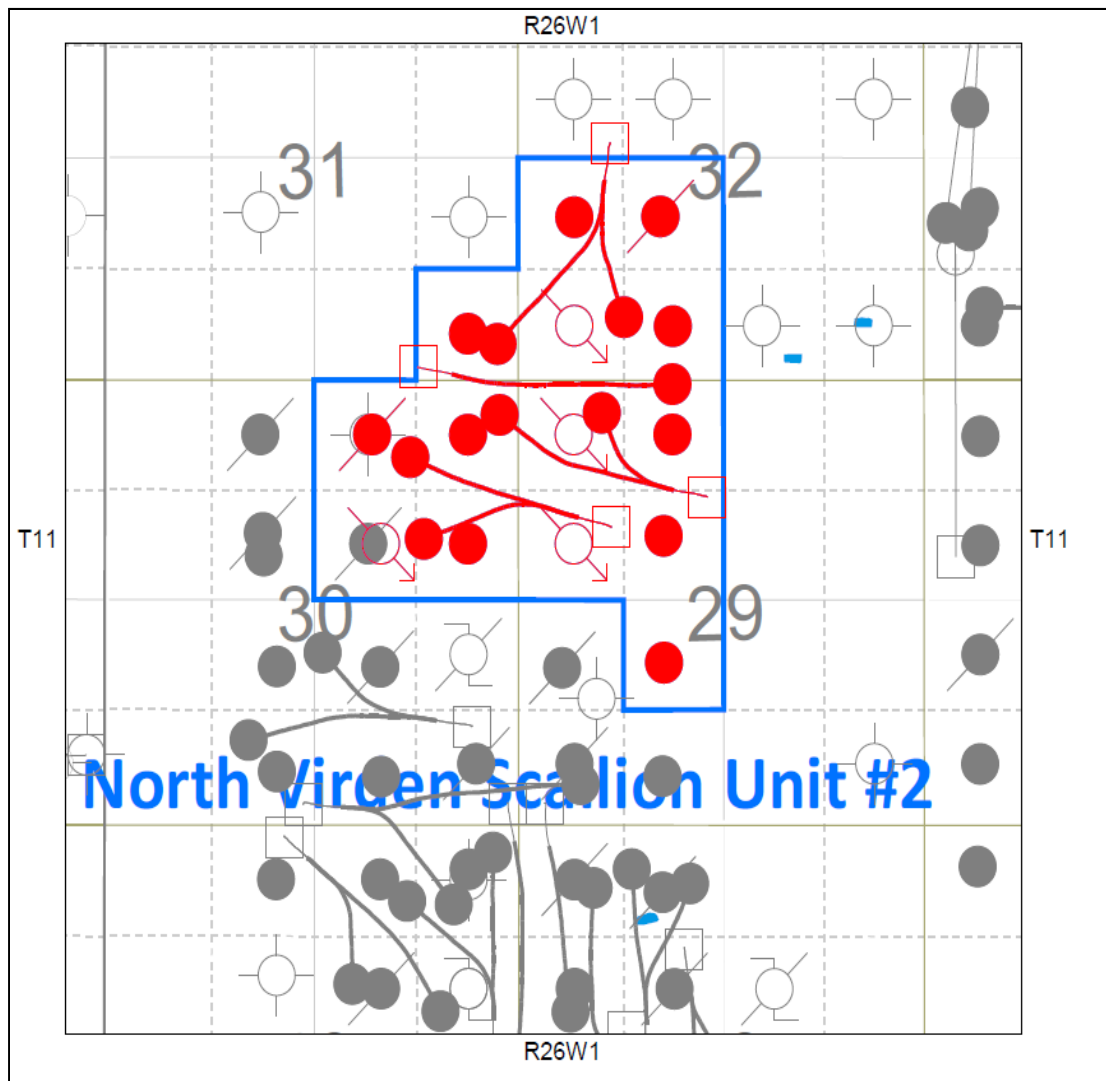
Table of Contents

INTRODUCTION	3
DISCUSSION	4
Production History	4
Waterflood History	5
Waterflood EOR Operating Strategy and Performance	6
Water Source and Quality	6
Injection Wellhead Pressures	6
Reservoir Pressure	6
Well Servicing	6
Waterflood Performance Discussion.....	6
List of Appendices.....	8
Appendix A: Well Name and Well Status	
Appendix B: Monthly Injection Wellhead Pressures Table and Plots	
Appendix C: North Virden Scallion Unit No. 2 Injection Pattern Summary	
Appendix D: Injector Pattern Production/Injection Rates, Cumulative and VRRs, Plots and Tables	

INTRODUCTION

North Virden Scallion Unit No. 2 Enhanced Oil Recovery (EOR) Waterflood Project was approved under Board Order No. PM 59 effective August 1989 with Saskoil and Gas Corporation as Operator. Mountcliff Resources Ltd. acquired the unit from with Saskoil and Gas Corporation and became operator in January 1993. Tundra acquired the unit from Mountcliff Resources Ltd. in January 2000 and is the current operator of the unit. The EOR project area contains 21 wells in 5 LSDs in Township 11, Range 26 W1 as shown in the figure below. Well list and well status is available in Appendix A.

Figure 1: North Virden Scallion Unit No. 2 Area Outline



In accordance with Section 73 of the Manitoba Drilling and Production Regulation, Tundra hereby submits the 2010 Annual Progress Report for North Virden Scallion Unit No. 2 as required by Board Order No. PM 59.

DISCUSSION

Production History

For the wells included in North Virden Scallion unit No. 2, production started November 1982 with 00/13-29-009-26W1/0 well. Oil production peaked at 59.2 m³/d in March 2000. The water oil ratio (WOR) averaged 10.6 m³/m³ over the last half of 2010. The Unit was producing 8.25 m³/d of oil and 87 m³/d of water. The oil production rate, injection rate, and WOR during each month for each injection pattern and for whole project are presented in Appendix C. The rates and WOR are presented in Figure 2.

Figure 2: North Virden Scallion Unit No. 2 Production/Injection Rates and WOR vs. Time

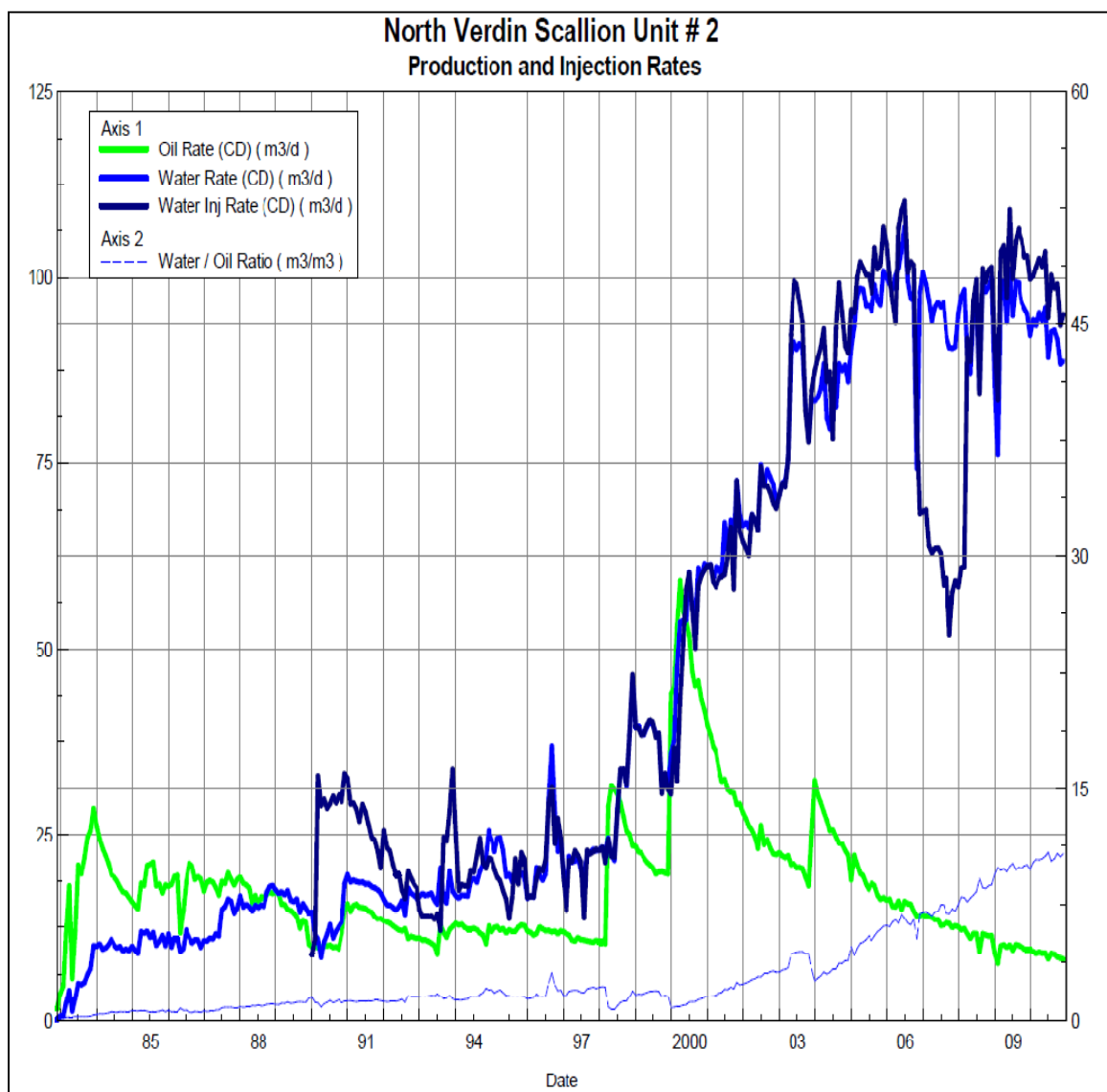
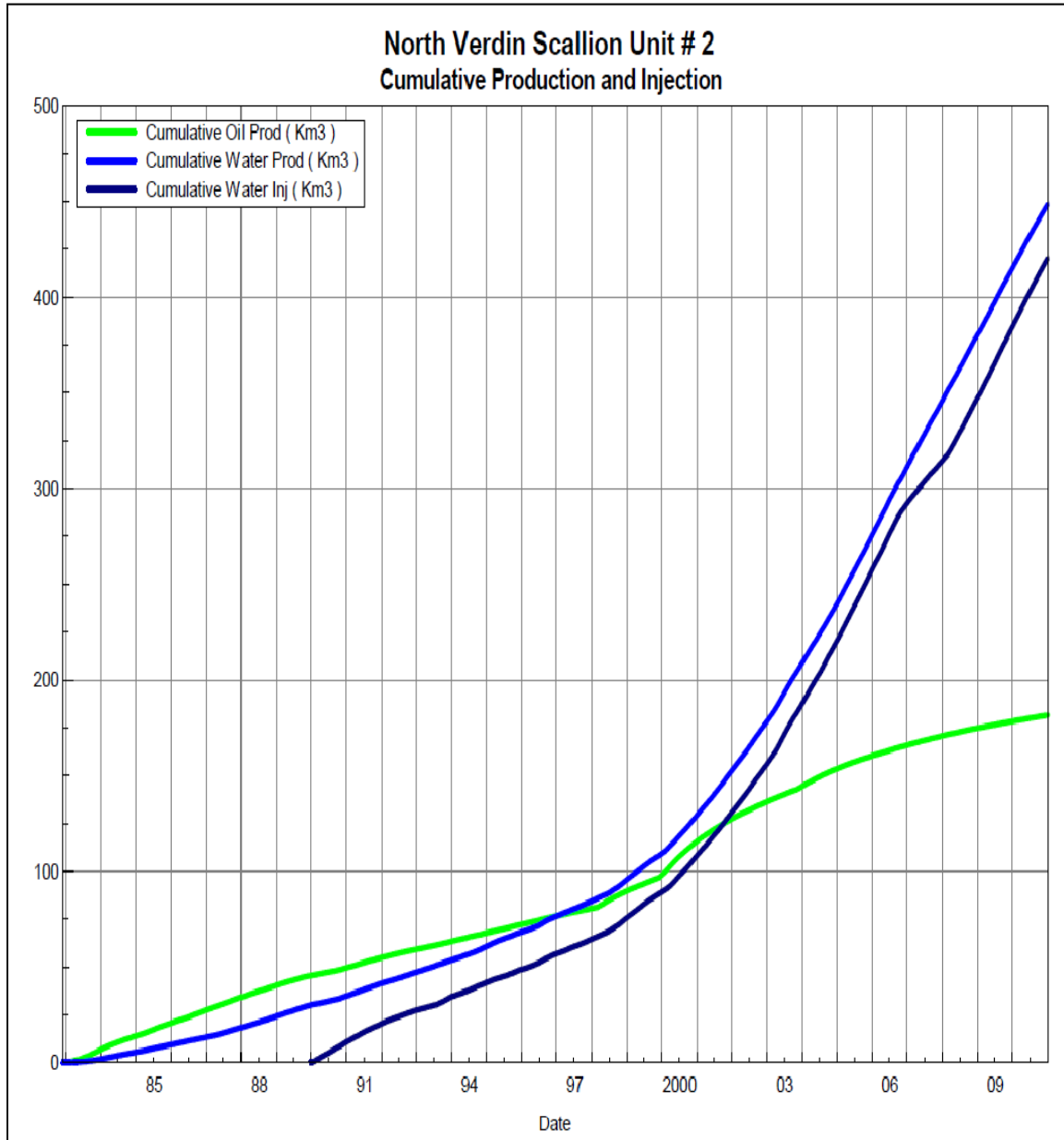


Figure 3 shows the cumulative production for North Virden Scallion Unit No. 2 to the end of December 2010 as 182 E³m³ of oil, and 445 E³m³ of water. The cumulative water injected is over 420 E³m³. The cumulative volume of oil, and water produced and fluid

injected for each injection pattern and for the whole project for each injection well is presented in Appendix D.

Figure 3: North Virden Scallion Unit No. 2 Cumulative Oil, Water and Water Injected vs. Time



Waterflood History

As of December 2010 the Unit has 4 active vertical injectors. At year end 2010, North Virden Scallion Unit No. 2 waterflood area had 3 injector patterns in place. Water injection started in December 1989. An overall summary for each injector pattern is presented in Appendix C.

Any future revisions to the waterflood development or surveillance plan would be based on new production or performance response data, technical studies, or observed reservoir behavior and reserves recovery interpretations.

Waterflood EOR Operating Strategy and Performance

Water Source and Quality

Currently there is no source water being used at North Virden Scallion Unit No. 2. Produced water is re-injected back into the formation after filtration.

Injection Wellhead Pressures

The Average monthly wellhead injection pressures, for each injection well, are summarized in Appendix B, and show all injection pressure since 2003. Average pressure for the injectors is as follows: 5077 kPag for 00/04-32-11-26W1/00, 5077 kPag for 02/10-30-011-26W1/00, 5077 kPag for 00/12-29-011-26W1/00 and 5077 kPag for 00/13-29-11-26W1/00.

Reservoir Pressure

No reservoir pressure measurements were taken at North Virden Scallion Unit No. 2, in 2010.

Well Servicing

No maintenance was required on the 21 wells in North Virden Scallion Unit No. 2, in 2010.

Voidage Replacement

Cumulative voidage for the East Routledge Unit No. 1 was 0.84 in December 2010. Tundra hopes to maintain this cumulative VRR, by keeping water injection at its current rate for the foreseeable future. Calculation, plots and tables of the Voidage replacement ratio on a monthly and cumulative basis for each injection pattern and for the project area are presented in Appendix D.

Waterflood Performance Discussion

OOIP for North Virden Scallion Unit No. 2 is 554 E³m³. Current recovery factor within the unit is approximately 33%. Ultimate recovery factor for the North Virden Scallion Unit No.1 is estimated to approach 36% by decline analysis. The flood will outperform the predicted estimated ultimate recovery factor of 33.7% last predicted in March 2002.

Overall this waterflood has been quite effective as evident by the high estimated ultimate recovery factor. Likely the most significant factor that has contributed to this Units high recovery factor was the application horizontal drilling technology within the Unit. From 1998-2002, 4 Hz wells were drilled into the Unit and since then the wells have recovered an average 125 mstb each. A portion of the reserves recovered by each Hz well can be

attributed to production acceleration; however, decline analysis clearly indicates that incremental reserves were also encountered when the Hz wells were drilled. These incremental reserves have contributed to the Units overall high recovery factor.

Tundra has no definite plans to significantly alter the way in which the waterflood at North Virden Scallion Unit No. 2 is currently operating.

List of Appendices

Appendix A: Well Name and Well Status

Appendix B: Monthly Injection Wellhead Pressures Table and Plots

Appendix C: North Virden Scallion Unit No. 2 Injection Pattern Summary

Appendix D: Injector Pattern Production/Injection Rates, Cumulative and VRRs

Plots and Tables for the following injectors:

00/04-32-011-26W1/00

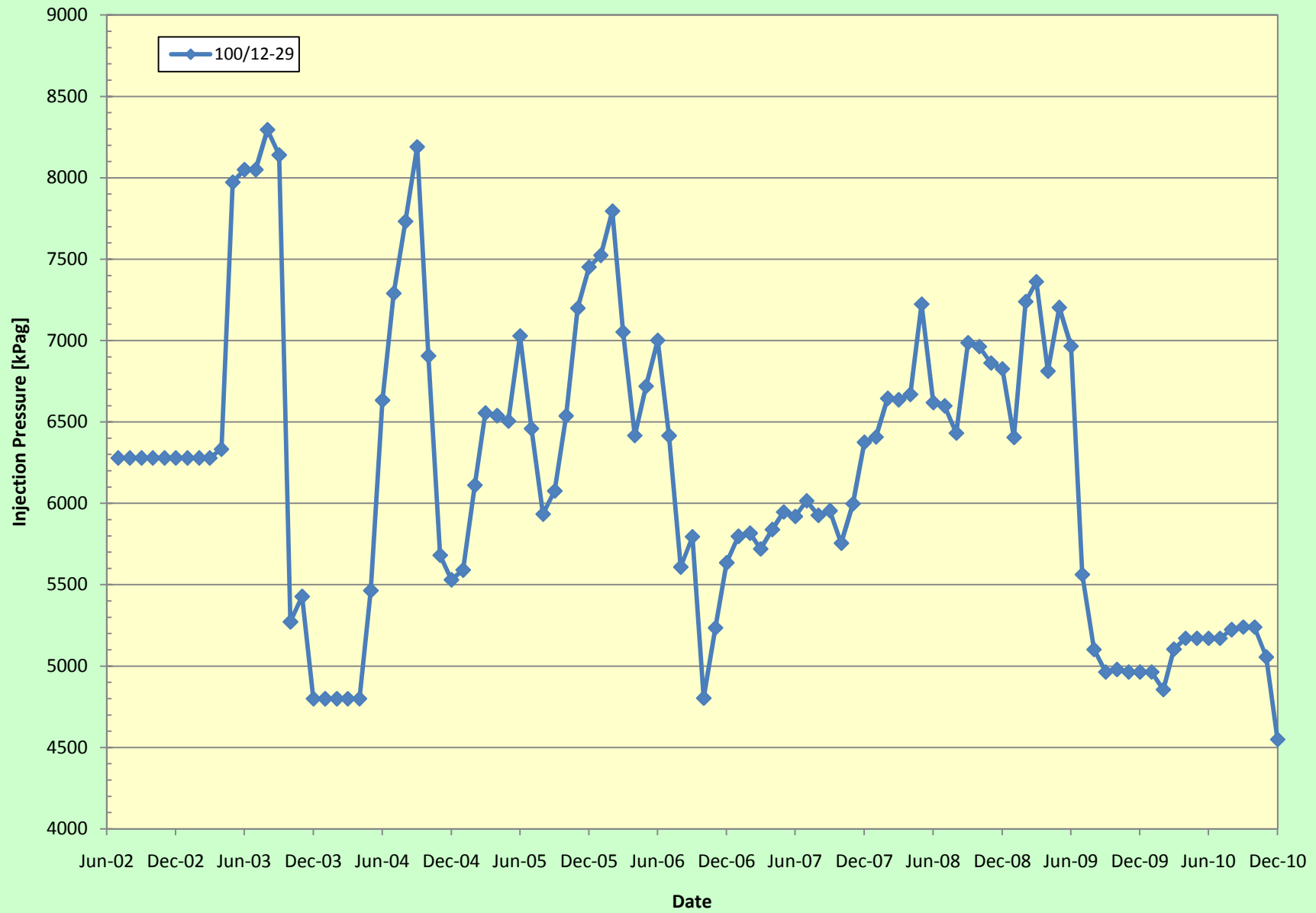
00/12-29-011-26W1/00

02/10-30-011-26W1/00

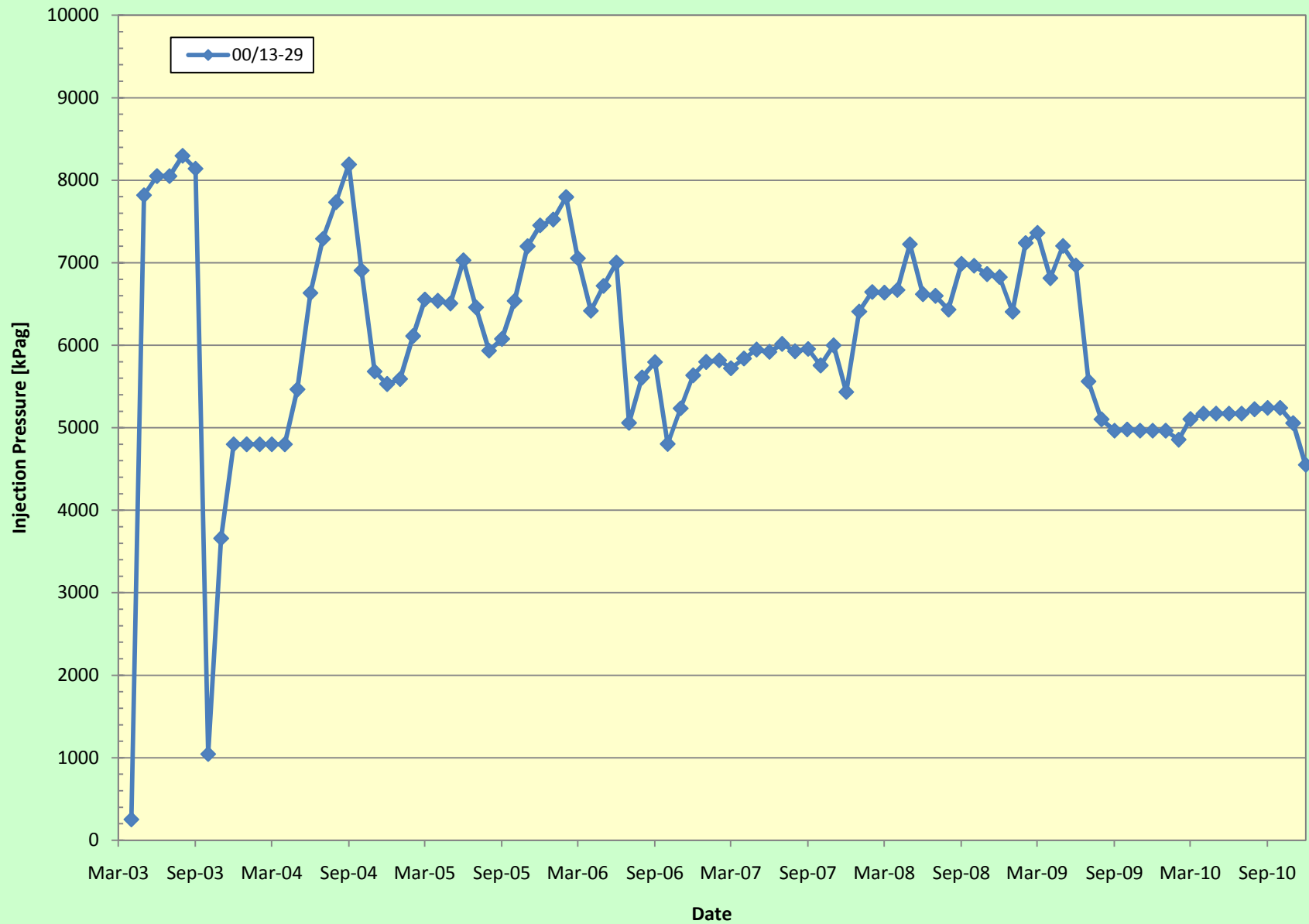
Appendix A

UWI	Surface Location	Well Status
100/06-29-011-26W1/00		Capable of OIL Prod
100/11-29-011-26W1/00		Capable of OIL Prod
100/12-29-011-26W1/00		WTR Injection
100/13-29-011-26W1/00		WTR Injection
102/13-29-011-26W1/02	100/11-29-011-26W1/00	Capable of OIL Prod
100/14-29-011-26W1/00		Capable of OIL Prod
100/09-30-011-26W1/00		Capable of OIL Prod
102/09-30-011-26W1/02	100/12-29-011-26W1/00	Capable of OIL Prod
102/10-30-011-26W1/00		WTR Injection
102/15-30-011-26W1/00		ABD Producer
103/15-30-011-26W1/00	100/12-29-011-26W1/00	Capable of OIL Prod
100/16-30-011-26W1/00		Capable of OIL Prod
102/16-30-011-26W1/00	100/11-29-011-26W1/00	Capable of OIL Prod
100/01-31-011-26W1/00		Capable of OIL Prod
102/01-31-011-26W1/02	100/12-32-011-26W1/00	Capable of OIL Prod
100/03-32-011-26W1/00		Capable of OIL Prod
102/03-32-011-26W1/00	100/12-32-011-26W1/00	Capable of OIL Prod
103/03-32-011-26W1/00		Capable of OIL Prod
100/04-32-011-26W1/00		WTR Injection
100/05-32-011-26W1/00		Capable of OIL Prod
100/06-32-011-26W1/00		ABD Producer

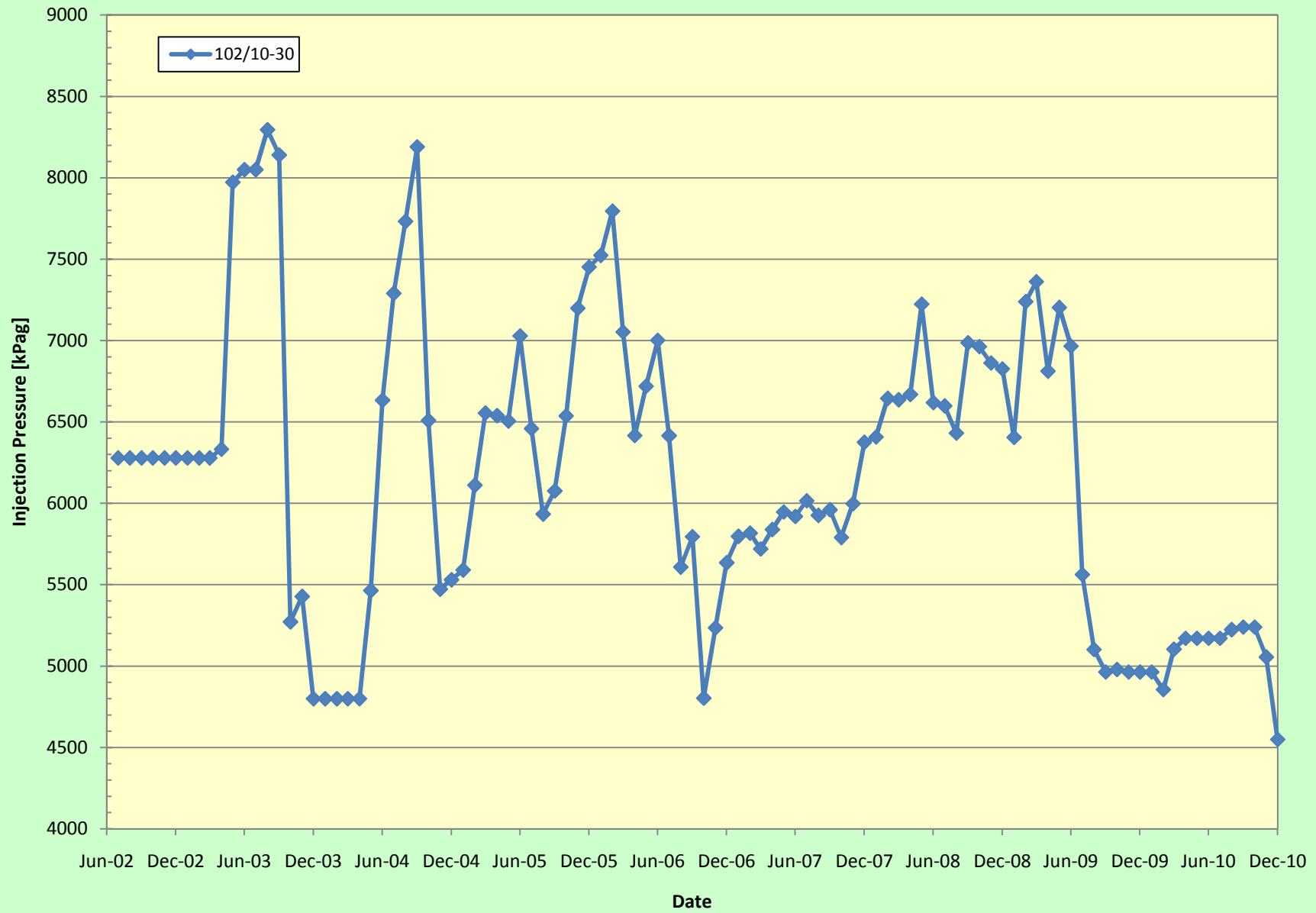
100/12-29 Injection Pressures vs Time



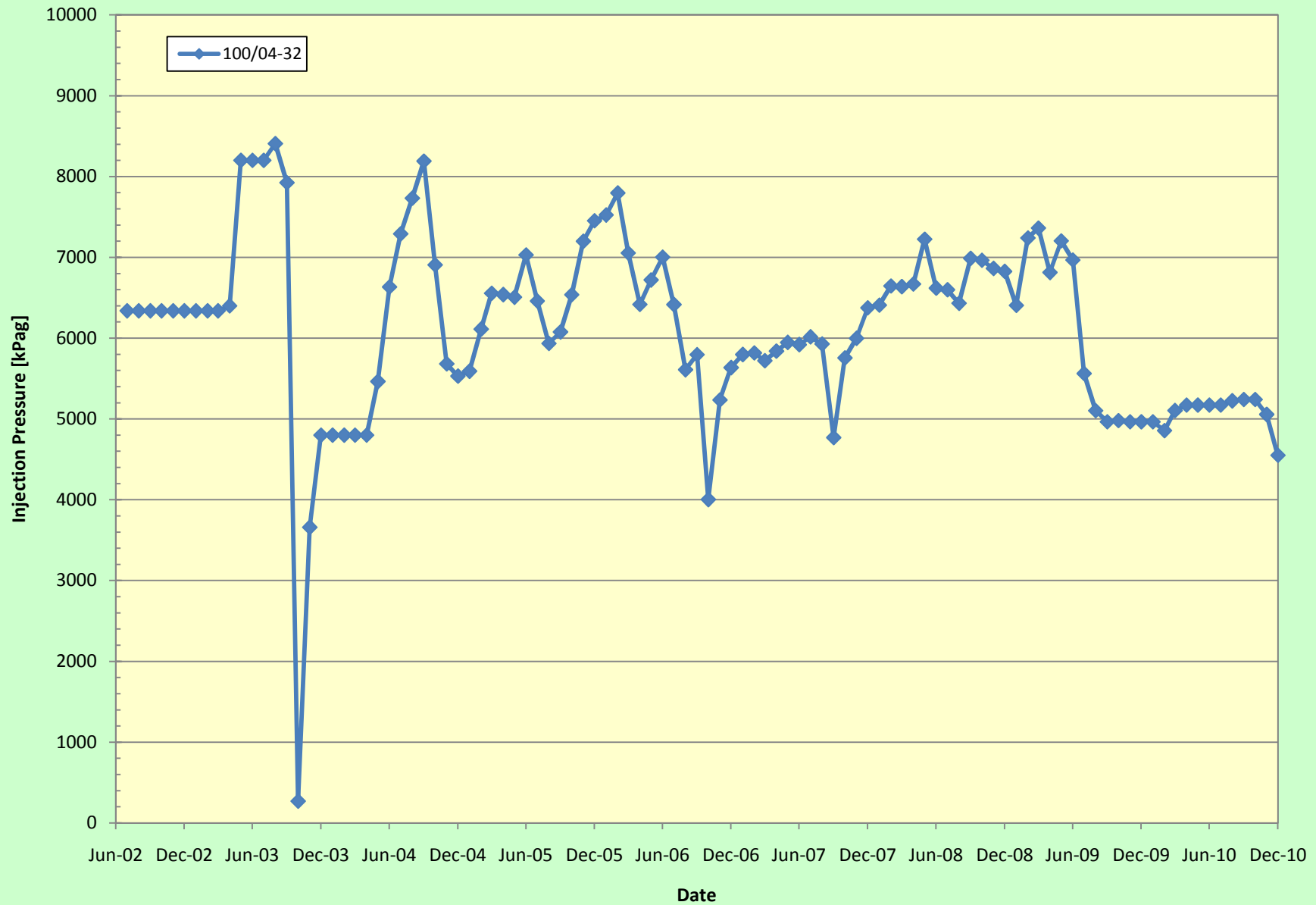
100/13-29 Injection Pressures vs Time



102/10-30 Injection Pressures vs Time



100/04-32 Injection Pressures vs Time



Appendix B

Average Monthly Injection Pressure (kPag)

Month	Pattern			
	100/04-32	102/10-30	100/12-29	00/13-29
Jul-02	6338	6279	6279	0
Aug-02	6338	6279	6279	0
Sep-02	6338	6279	6279	0
Oct-02	6338	6279	6279	0
Nov-02	6338	6279	6279	0
Dec-02	6338	6279	6279	0
Jan-03	6338	6279	6279	0
Feb-03	6338	6279	6279	0
Mar-03	6338	6279	6279	0
Apr-03	6400	6333	6333	253
May-03	8200	7973	7973	7818
Jun-03	8200	8050	8050	8050
Jul-03	8200	8050	8050	8050
Aug-03	8406	8295	8295	8295
Sep-03	7923	8140	8140	8140
Oct-03	271	5272	5272	1045
Nov-03	3660	5428	5428	3660
Dec-03	4800	4800	4800	4800
Jan-04	4800	4800	4800	4800
Feb-04	4800	4800	4800	4800
Mar-04	4800	4800	4800	4800
Apr-04	4800	4800	4800	4800
May-04	5465	5465	5465	5465
Jun-04	6633	6633	6633	6633
Jul-04	7290	7290	7290	7290
Aug-04	7732	7732	7732	7732
Sep-04	8190	8190	8190	8190
Oct-04	6906	6509	6906	6906
Nov-04	5681	5473	5681	5681
Dec-04	5530	5530	5530	5530
Jan-05	5591	5591	5591	5591
Feb-05	6112	6112	6112	6112
Mar-05	6555	6555	6555	6555
Apr-05	6539	6539	6539	6539
May-05	6506	6506	6506	6506
Jun-05	7029	7029	7029	7029
Jul-05	6460	6460	6460	6460
Aug-05	5934	5934	5934	5934
Sep-05	6077	6077	6077	6077

Average Monthly Injection Pressure (kPag)

Month	Pattern			
	100/04-32	102/10-30	100/12-29	00/13-29
Oct-05	6537	6537	6537	6537
Nov-05	7199	7199	7199	7199
Dec-05	7452	7452	7452	7452
Jan-06	7524	7524	7524	7524
Feb-06	7796	7796	7796	7796
Mar-06	7053	7053	7053	7053
Apr-06	6417	6417	6417	6417
May-06	6719	6719	6719	6719
Jun-06	7002	7002	7002	7002
Jul-06	6416	6416	6416	5059
Aug-06	5609	5609	5609	5609
Sep-06	5796	5796	5796	5796
Oct-06	4003	4804	4804	4804
Nov-06	5235	5235	5235	5235
Dec-06	5636	5636	5636	5636
Jan-07	5798	5798	5798	5798
Feb-07	5817	5817	5817	5817
Mar-07	5720	5720	5720	5720
Apr-07	5839	5839	5839	5839
May-07	5947	5947	5947	5947
Jun-07	5920	5920	5920	5920
Jul-07	6016	6016	6016	6016
Aug-07	5927	5927	5927	5927
Sep-07	4769	5961	5955	5955
Oct-07	5755	5790	5755	5755
Nov-07	5998	5998	5998	5998
Dec-07	6375	6375	6375	5433
Jan-08	6408	6408	6408	6408
Feb-08	6645	6645	6645	6645
Mar-08	6637	6637	6637	6637
Apr-08	6670	6670	6670	6670
May-08	7224	7224	7224	7224
Jun-08	6619	6619	6619	6619
Jul-08	6599	6599	6599	6599
Aug-08	6431	6431	6431	6431
Sep-08	6987	6987	6987	6987
Oct-08	6963	6963	6963	6963
Nov-08	6863	6863	6863	6863
Dec-08	6826	6826	6826	6826
Jan-09	6405	6405	6405	6405
Feb-09	7239	7239	7239	7239
Mar-09	7362	7362	7362	7362
Apr-09	6812	6812	6812	6812

Average Monthly Injection Pressure (kPag)

Month	Pattern			
	100/04-32	102/10-30	100/12-29	00/13-29
May-09	7203	7203	7203	7203
Jun-09	6966	6966	6966	6966
Jul-09	5563	5563	5563	5563
Aug-09	5102	5102	5102	5102
Sep-09	4964	4964	4964	4964
Oct-09	4979	4979	4979	4979
Nov-09	4964	4964	4964	4964
Dec-09	4964	4964	4964	4964
Jan-10	4964	4964	4964	4964
Feb-10	4856	4856	4856	4856
Mar-10	5104	5104	5104	5104
Apr-10	5171	5171	5171	5171
May-10	5171	5171	5171	5171
Jun-10	5171	5171	5171	5171
Jul-10	5171	5171	5171	5171
Aug-10	5224	5224	5224	5224
Sep-10	5240	5240	5240	5240
Oct-10	5240	5240	5240	5240
Nov-10	5056	5056	5056	5056
Dec-10	4550	4550	4550	4550

Pattern Name	Injector Location (011-26W)	Injector Surf. Location (011-26W)	Status	Supported Wells (011-26W)	No. of Support ed Wells	Allocatio n Factor	Pattern Prod Start Month	Inj Start Month	Oil Rate (m³/d)	Water Rate (m³/d)	WOR (m³/m³)	Water Injection (m³/d)	Cum Oil (E³m³)	Cum Water (E³m³)	Cum Inj Water (E³m³)	Monthly VRR	Cum VRR
02/10-30-011-26W1 Injector	2/10/1930	Vertical Well	WTR Injection	01-31, 09-30, 16-30, 02/09-30, 02/15-30, 03/03-32, 03/15-30 (Surf. 12-29)	7	1	Mar 1983	Dec 1989	0.6	11.1	20	24.7	28.0	77.3	146.4	2.2	1.18
00/04-32-011-26W1 Injector	00/04-32	Vertical Well	WTR Injection	01-31, 03-32, 05-32, 06-29, 06-32, 09-30, 11-29, 12-29, 13-29, 14-29, 16-30, 02/01-31/2 (Surf. 12-32), 02/03-32(Surf. 12-32), 02/09-30/2 (Surf. 12-29, 02/13-29/2 (Surf. 11-29), 02/16-30(Surf. 11-29), 03/03-32, 03/15-30(Surf. 12-29)	18	0.5	Nov 1982	Feb 1990	4.0	35.6	8.83	64.2	91.3	182.8	273.9	1.7	1.31
00/12-29-011-26W1 Injector	00/12-29	Vertical Well	WTR Injection	01-31, 03-32, 04-32, 05-32, 06-29, 06-32, 09-30, 11-29, 13-29, 14-29, 16-30, 02/01-31/2 (Surf. 12-32), 02/03-32(Surf. 12-32), 02/09-30/2 (Surf. 12-29, 02/13-29/2 (Surf. 11-29), 02/16-30(Surf. 11-29), 03/03-32, 03/15-30(Surf. 12-29)	18	0.5	Nov 1982	Feb 1990	4.2	44.9	10.82	64.2	95.2	231.8	273.9	1.4	1.06

Completions Selected (21)

Oil Formation Vol. Factor : 1.05 m3/m3

Water Formation Vol Factor : 1.00 m3/m3

Water / Oil Ratio : 10.97 m3/m3

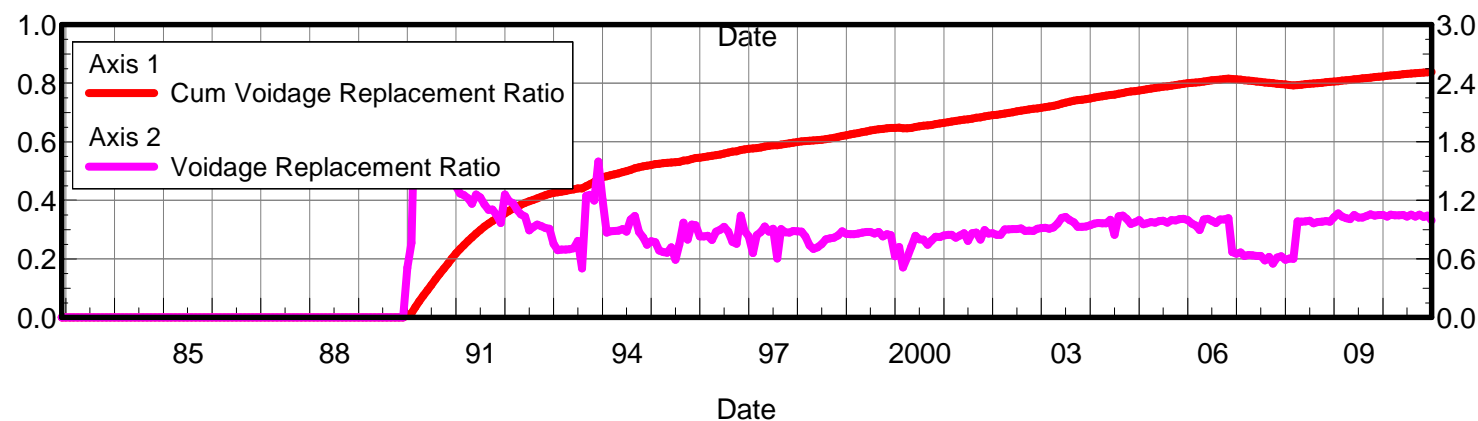
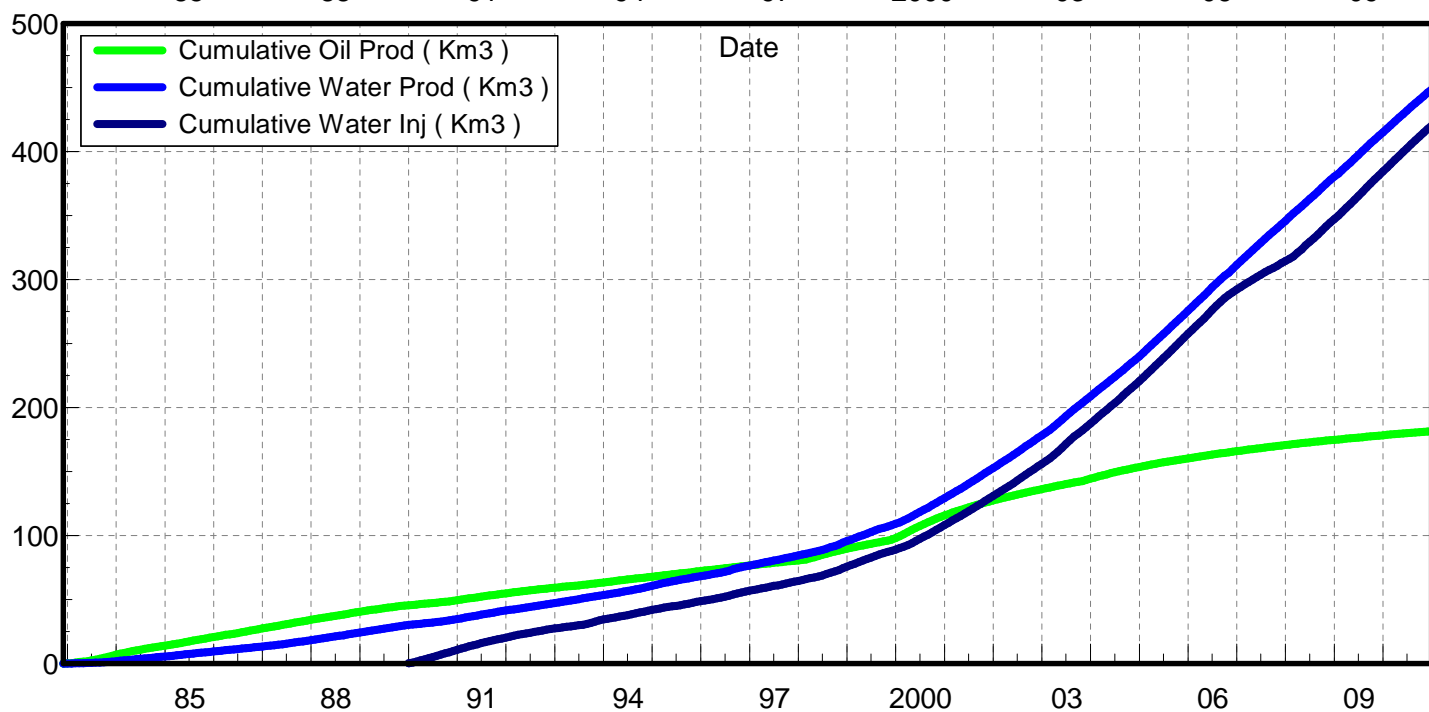
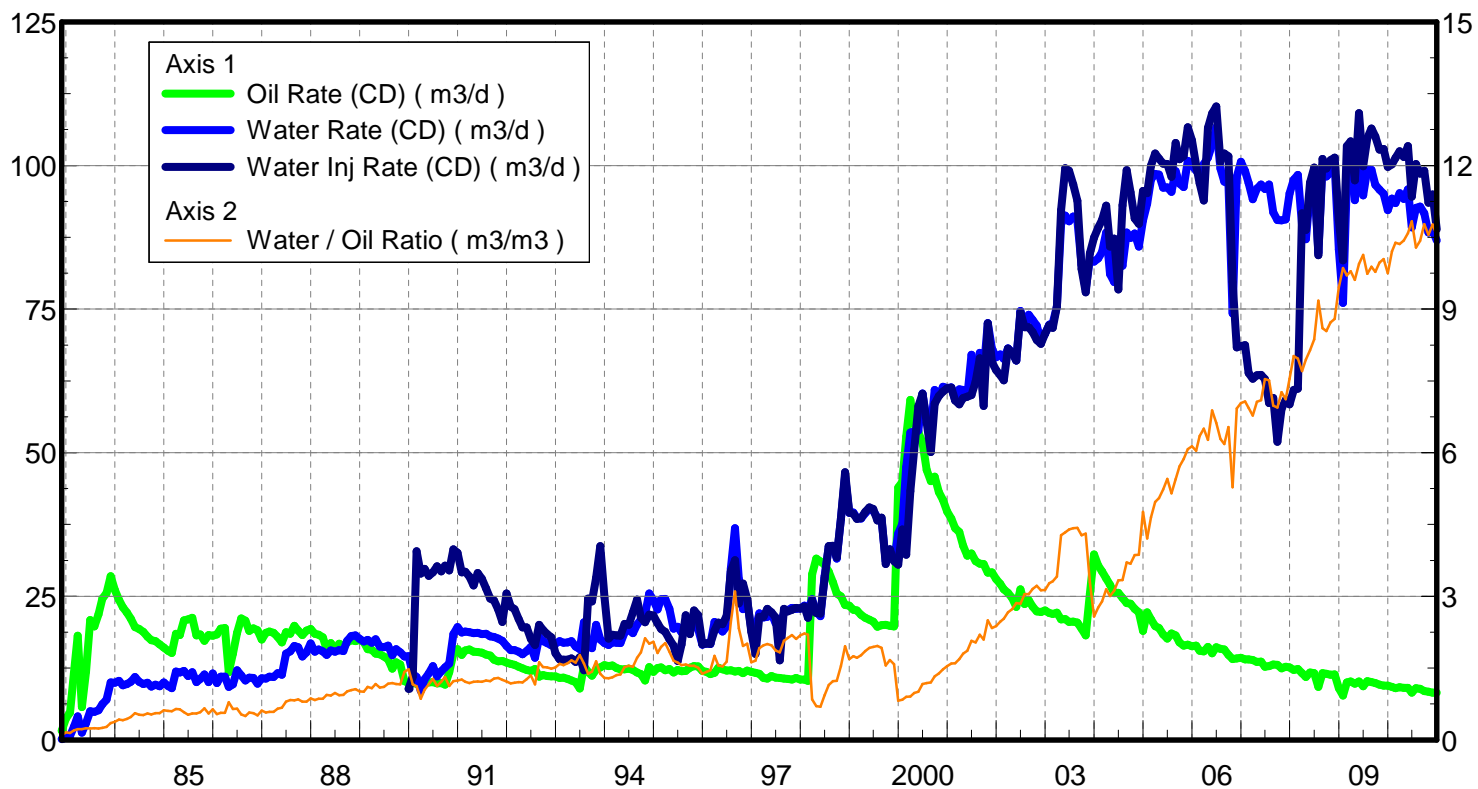
July 25, 2011

Operator: Tundra_Oil_and_Gas_Patnership

Oil Rate (CD) : 7.83 m3/d

Water Rate (CD) : 85.87 m3/d

Water Inj Rate (CD) : 87.59 m3/d



Date	Oil Rate (CD) m3/d	Water Rate (CD) m3/d	Water Oil Ratio m3/m3	Water Inj Rate (CD) m3/d	Cum Oil Prod Km3	Cum Water Prod Km3	Cum Water Inj Km3	Voidage Replacement Ratio	Cum Voidage Replacement Ratio
11/30/1982	1.61	0.15	0.09		0.05	0.00	0.00	0.000	0.000
12/31/1982	3.70	0.58	0.16		0.16	0.02	0.00	0.000	0.000
1/31/1983	4.76	0.68	0.14		0.31	0.04	0.00	0.000	0.000
2/28/1983	11.55	2.27	0.20		0.63	0.11	0.00	0.000	0.000
3/31/1983	18.13	4.10	0.23		1.20	0.23	0.00	0.000	0.000
4/30/1983	5.73	1.28	0.22		1.37	0.27	0.00	0.000	0.000
5/31/1983	11.92	2.94	0.25		1.74	0.36	0.00	0.000	0.000
6/30/1983	20.86	5.00	0.24		2.36	0.51	0.00	0.000	0.000
7/31/1983	19.77	4.89	0.25		2.98	0.67	0.00	0.000	0.000
8/31/1983	21.88	5.17	0.24		3.65	0.83	0.00	0.000	0.000
9/30/1983	24.61	6.20	0.25		4.39	1.01	0.00	0.000	0.000
10/31/1983	25.53	6.98	0.27		5.18	1.23	0.00	0.000	0.000
11/30/1983	28.52	10.01	0.35		6.04	1.53	0.00	0.000	0.000
12/31/1983	26.08	9.95	0.38		6.85	1.84	0.00	0.000	0.000
1/31/1984	24.35	10.28	0.42		7.60	2.16	0.00	0.000	0.000
2/29/1984	23.09	9.53	0.41		8.27	2.43	0.00	0.000	0.000
3/31/1984	22.14	9.71	0.44		8.96	2.73	0.00	0.000	0.000
4/30/1984	21.09	10.13	0.48		9.59	3.04	0.00	0.000	0.000
5/31/1984	19.63	10.96	0.56		10.20	3.38	0.00	0.000	0.000
6/30/1984	19.29	10.11	0.52		10.78	3.68	0.00	0.000	0.000
7/31/1984	18.80	9.73	0.52		11.36	3.98	0.00	0.000	0.000
8/31/1984	17.97	9.93	0.55		11.92	4.29	0.00	0.000	0.000
9/30/1984	17.35	9.26	0.53		12.44	4.57	0.00	0.000	0.000
10/31/1984	17.21	9.61	0.56		12.97	4.87	0.00	0.000	0.000
11/30/1984	16.64	9.33	0.56		13.47	5.14	0.00	0.000	0.000
12/31/1984	16.06	9.99	0.62		13.97	5.45	0.00	0.000	0.000
1/31/1985	15.53	9.39	0.60		14.45	5.75	0.00	0.000	0.000
2/28/1985	15.11	9.03	0.60		14.87	6.00	0.00	0.000	0.000
3/31/1985	18.48	11.90	0.64		15.45	6.37	0.00	0.000	0.000
4/30/1985	18.23	11.71	0.64		15.99	6.72	0.00	0.000	0.000
5/31/1985	20.81	12.03	0.58		16.64	7.09	0.00	0.000	0.000
6/30/1985	20.99	11.09	0.53		17.27	7.42	0.00	0.000	0.000
7/31/1985	21.27	11.81	0.56		17.93	7.79	0.00	0.000	0.000
8/31/1985	18.21	10.06	0.55		18.49	8.10	0.00	0.000	0.000
9/30/1985	18.37	10.60	0.58		19.04	8.42	0.00	0.000	0.000
10/31/1985	17.27	11.41	0.66		19.58	8.77	0.00	0.000	0.000
11/30/1985	18.25	10.04	0.55		20.13	9.08	0.00	0.000	0.000
12/31/1985	18.12	11.59	0.64		20.69	9.43	0.00	0.000	0.000
1/31/1986	18.36	9.87	0.54		21.26	9.74	0.00	0.000	0.000
2/28/1986	19.36	10.99	0.57		21.80	10.05	0.00	0.000	0.000
3/31/1986	19.50	10.99	0.56		22.40	10.39	0.00	0.000	0.000
4/30/1986	11.80	9.24	0.78		22.76	10.67	0.00	0.000	0.000
5/31/1986	15.03	9.67	0.64		23.22	10.97	0.00	0.000	0.000
6/30/1986	18.66	12.14	0.65		23.78	11.33	0.00	0.000	0.000
7/31/1986	21.14	11.21	0.53		24.44	11.68	0.00	0.000	0.000
8/31/1986	20.75	10.35	0.50		25.08	12.00	0.00	0.000	0.000
9/30/1986	18.99	10.81	0.57		25.65	12.32	0.00	0.000	0.000
10/31/1986	19.40	10.81	0.56		26.25	12.66	0.00	0.000	0.000

Date	Oil Rate (CD) m3/d	Water Rate (CD) m3/d	Water Oil Ratio m3/m3	Water Inj Rate (CD) m3/d	Cum Oil Prod Km3	Cum Water Prod Km3	Cum Water Inj Km3	Voidage Replacement Ratio	Cum Voidage Replacement Ratio
11/30/1986	19.06	9.81	0.51		26.83	12.95	0.00	0.000	0.000
12/31/1986	17.49	10.72	0.61		27.37	13.28	0.00	0.000	0.000
1/31/1987	18.62	10.66	0.57		27.95	13.61	0.00	0.000	0.000
2/28/1987	18.85	11.03	0.58		28.47	13.92	0.00	0.000	0.000
3/31/1987	18.65	10.95	0.59		29.05	14.26	0.00	0.000	0.000
4/30/1987	17.93	11.64	0.65		29.59	14.61	0.00	0.000	0.000
5/31/1987	16.96	11.36	0.67		30.12	14.96	0.00	0.000	0.000
6/30/1987	18.75	15.02	0.80		30.68	15.42	0.00	0.000	0.000
7/31/1987	18.47	15.43	0.84		31.25	15.89	0.00	0.000	0.000
8/31/1987	19.87	16.38	0.82		31.87	16.40	0.00	0.000	0.000
9/30/1987	19.03	16.12	0.85		32.44	16.89	0.00	0.000	0.000
10/31/1987	18.23	14.54	0.80		33.00	17.34	0.00	0.000	0.000
11/30/1987	19.03	15.27	0.80		33.57	17.79	0.00	0.000	0.000
12/31/1987	19.33	16.78	0.87		34.17	18.31	0.00	0.000	0.000
1/31/1988	18.50	15.37	0.83		34.75	18.79	0.00	0.000	0.000
2/29/1988	18.30	15.74	0.86		35.28	19.25	0.00	0.000	0.000
3/31/1988	17.88	15.41	0.86		35.83	19.73	0.00	0.000	0.000
4/30/1988	15.80	14.81	0.94		36.30	20.17	0.00	0.000	0.000
5/31/1988	16.87	15.60	0.93		36.83	20.65	0.00	0.000	0.000
6/30/1988	15.66	15.33	0.98		37.30	21.11	0.00	0.000	0.000
7/31/1988	16.75	15.61	0.93		37.82	21.60	0.00	0.000	0.000
8/31/1988	16.44	15.48	0.94		38.33	22.08	0.00	0.000	0.000
9/30/1988	16.99	17.25	1.02		38.84	22.59	0.00	0.000	0.000
10/31/1988	17.38	18.08	1.04		39.37	23.16	0.00	0.000	0.000
11/30/1988	17.18	18.20	1.06		39.89	23.70	0.00	0.000	0.000
12/31/1988	17.39	17.59	1.01		40.43	24.25	0.00	0.000	0.000
1/31/1989	17.04	17.14	1.01		40.96	24.78	0.00	0.000	0.000
2/28/1989	15.78	17.42	1.10		41.40	25.27	0.00	0.000	0.000
3/31/1989	15.70	16.93	1.08		41.89	25.79	0.00	0.000	0.000
4/30/1989	15.04	17.53	1.17		42.34	26.32	0.00	0.000	0.000
5/31/1989	14.90	16.27	1.09		42.80	26.82	0.00	0.000	0.000
6/30/1989	14.53	16.11	1.11		43.23	27.30	0.00	0.000	0.000
7/31/1989	14.03	16.43	1.17		43.67	27.81	0.00	0.000	0.000
8/31/1989	12.43	14.71	1.18		44.05	28.27	0.00	0.000	0.000
9/30/1989	13.51	15.82	1.17		44.46	28.74	0.00	0.000	0.000
10/31/1989	13.13	15.23	1.16		44.87	29.22	0.00	0.000	0.000
11/30/1989	10.23	14.53	1.42		45.17	29.65	0.00	0.000	0.000
12/31/1989	9.87	14.55	1.47	8.88	45.48	30.10	0.28	0.510	0.006
1/31/1990	9.92	11.52	1.16	11.02	45.79	30.46	0.62	0.766	0.014
2/28/1990	9.78	10.93	1.12	32.86	46.06	30.77	1.54	2.388	0.035
3/31/1990	9.90	8.53	0.86	28.94	46.37	31.03	2.43	2.540	0.055
4/30/1990	10.05	10.56	1.05	29.78	46.67	31.35	3.33	2.212	0.074
5/31/1990	10.01	11.59	1.16	28.56	46.98	31.71	4.21	1.972	0.093
6/30/1990	10.08	12.87	1.28	29.18	47.28	32.09	5.09	1.849	0.111
7/31/1990	9.82	11.07	1.13	30.21	47.59	32.44	6.02	2.171	0.130
8/31/1990	9.87	11.96	1.21	29.31	47.89	32.81	6.93	1.978	0.149
9/30/1990	9.62	12.63	1.31	30.33	48.18	33.19	7.84	1.968	0.166
10/31/1990	11.79	13.30	1.13	29.49	48.55	33.60	8.76	1.765	0.184

Date	Oil Rate (CD) m3/d	Water Rate (CD) m3/d	Water Oil Ratio m3/m3	Water Inj Rate (CD) m3/d	Cum Oil Prod Km3	Cum Water Prod Km3	Cum Water Inj Km3	Voidage Replacement Ratio	Cum Voidage Replacement Ratio
11/30/1990	15.03	18.43	1.23	33.19	49.00	34.15	9.75	1.457	0.202
12/31/1990	15.80	19.65	1.24	32.57	49.49	34.76	10.76	1.345	0.219
1/31/1991	14.79	18.69	1.26	29.16	49.95	35.34	11.67	1.270	0.234
2/28/1991	15.55	18.89	1.21	29.29	50.38	35.87	12.49	1.252	0.248
3/31/1991	15.75	18.73	1.19	28.45	50.87	36.45	13.37	1.222	0.261
4/30/1991	15.34	18.61	1.21	26.86	51.33	37.01	14.18	1.166	0.273
5/31/1991	15.30	18.64	1.22	29.08	51.80	37.58	15.08	1.261	0.287
6/30/1991	15.16	18.40	1.21	28.06	52.26	38.14	15.92	1.232	0.299
7/31/1991	14.84	18.45	1.24	26.38	52.72	38.71	16.74	1.160	0.310
8/31/1991	14.67	18.04	1.23	24.59	53.17	39.27	17.50	1.104	0.320
9/30/1991	13.98	17.90	1.28	24.26	53.59	39.80	18.23	1.105	0.330
10/31/1991	13.67	17.65	1.29	22.71	54.02	40.35	18.93	1.051	0.338
11/30/1991	13.72	17.23	1.26	20.56	54.43	40.87	19.55	0.970	0.345
12/31/1991	13.43	16.36	1.22	25.51	54.85	41.38	20.34	1.260	0.355
1/31/1992	13.25	15.64	1.18	23.21	55.26	41.86	21.06	1.192	0.364
2/29/1992	13.08	15.63	1.19	22.76	55.64	42.31	21.72	1.172	0.372
3/31/1992	12.75	15.36	1.20	21.01	56.03	42.79	22.37	1.103	0.379
4/30/1992	12.46	14.92	1.20	19.60	56.40	43.24	22.96	1.058	0.385
5/31/1992	12.15	15.44	1.27	19.61	56.78	43.72	23.56	1.034	0.392
6/30/1992	12.01	16.21	1.35	17.59	57.14	44.20	24.09	0.894	0.397
7/31/1992	12.34	14.30	1.16	16.55	57.52	44.65	24.61	0.926	0.402
8/31/1992	11.01	17.88	1.62	20.05	57.86	45.20	25.23	0.952	0.407
9/30/1992	11.27	17.17	1.52	19.14	58.20	45.72	25.80	0.937	0.412
10/31/1992	11.13	16.86	1.51	18.42	58.55	46.24	26.37	0.917	0.417
11/30/1992	11.05	16.47	1.49	17.86	58.88	46.73	26.91	0.908	0.422
12/31/1992	11.06	16.75	1.51	15.06	59.22	47.25	27.37	0.755	0.425
1/31/1993	10.80	17.18	1.59	14.01	59.56	47.78	27.81	0.690	0.428
2/28/1993	10.83	16.92	1.56	13.98	59.86	48.26	28.20	0.697	0.430
3/31/1993	10.61	16.98	1.60	13.98	60.19	48.78	28.63	0.697	0.433
4/30/1993	10.37	17.21	1.66	14.16	60.50	49.30	29.06	0.701	0.435
5/31/1993	10.06	16.24	1.61	13.57	60.81	49.80	29.48	0.709	0.437
6/30/1993	8.94	15.80	1.77	14.43	61.08	50.28	29.91	0.785	0.440
7/31/1993	12.85	20.46	1.59	12.12	61.48	50.91	30.29	0.501	0.441
8/31/1993	11.83	16.34	1.38	24.63	61.85	51.42	31.05	1.246	0.448
9/30/1993	11.16	15.96	1.43	24.10	62.18	51.90	31.77	1.256	0.455
10/31/1993	12.21	20.04	1.64	28.21	62.56	52.52	32.65	1.197	0.462
11/30/1993	12.63	17.47	1.38	33.73	62.94	53.04	33.66	1.596	0.472
12/31/1993	13.04	16.86	1.29	24.94	63.34	53.57	34.43	1.209	0.479
1/31/1994	12.84	16.52	1.29	17.61	63.74	54.08	34.98	0.871	0.482
2/28/1994	12.97	16.96	1.31	18.31	64.10	54.55	35.49	0.884	0.486
3/31/1994	12.51	16.91	1.35	18.17	64.49	55.08	36.06	0.885	0.489
4/30/1994	12.30	16.84	1.37	18.12	64.86	55.58	36.60	0.889	0.492
5/31/1994	12.31	18.72	1.52	20.18	65.24	56.16	37.23	0.906	0.496
6/30/1994	12.38	19.17	1.55	20.03	65.61	56.74	37.83	0.880	0.500
7/31/1994	12.20	18.60	1.52	22.22	65.99	57.31	38.51	1.004	0.504
8/31/1994	11.73	20.09	1.71	24.45	66.35	57.94	39.27	1.041	0.509
9/30/1994	11.44	20.96	1.83	21.29	66.70	58.57	39.91	0.877	0.513
10/31/1994	10.33	21.95	2.13	20.49	67.02	59.25	40.55	0.822	0.516

Date	Oil Rate (CD) m3/d	Water Rate (CD) m3/d	Water Oil Ratio m3/m3	Water Inj Rate (CD) m3/d	Cum Oil Prod Km3	Cum Water Prod Km3	Cum Water Inj Km3	Voidage Replacement Ratio	Cum Voidage Replacement Ratio
11/30/1994	12.70	25.52	2.01	21.80	67.40	60.01	41.20	0.747	0.518
12/31/1994	11.87	24.33	2.05	21.67	67.77	60.77	41.87	0.780	0.521
1/31/1995	12.51	22.73	1.82	20.32	68.16	61.47	42.50	0.771	0.524
2/28/1995	12.61	24.47	1.94	19.30	68.51	62.16	43.04	0.686	0.525
3/31/1995	12.14	24.54	2.02	18.81	68.88	62.92	43.63	0.671	0.527
4/30/1995	12.36	22.79	1.84	17.52	69.26	63.60	44.15	0.665	0.528
5/31/1995	11.72	19.38	1.65	16.40	69.62	64.20	44.66	0.720	0.530
6/30/1995	12.19	19.68	1.62	13.75	69.98	64.79	45.07	0.593	0.530
7/31/1995	11.96	18.71	1.56	16.62	70.36	65.37	45.59	0.750	0.532
8/31/1995	12.01	18.89	1.57	21.70	70.73	65.96	46.26	0.971	0.535
9/30/1995	12.58	19.43	1.55	18.43	71.10	66.54	46.81	0.799	0.537
10/31/1995	12.85	19.93	1.55	22.54	71.50	67.16	47.51	0.953	0.541
11/30/1995	12.78	19.25	1.51	21.71	71.89	67.73	48.16	0.946	0.544
12/31/1995	12.01	16.57	1.38	16.65	72.26	68.25	48.68	0.831	0.546
1/31/1996	11.83	16.79	1.42	16.78	72.63	68.77	49.20	0.830	0.548
2/29/1996	11.46	16.70	1.46	16.76	72.96	69.25	49.69	0.838	0.550
3/31/1996	11.67	20.52	1.76	19.01	73.32	69.89	50.28	0.796	0.552
4/30/1996	12.59	19.57	1.55	20.43	73.70	70.48	50.89	0.880	0.554
5/31/1996	12.29	18.85	1.53	20.16	74.08	71.06	51.51	0.900	0.557
6/30/1996	12.07	19.77	1.64	21.57	74.44	71.65	52.16	0.927	0.560
7/31/1996	12.10	29.82	2.47	29.32	74.81	72.58	53.07	0.880	0.563
8/31/1996	11.89	36.88	3.10	31.29	75.18	73.72	54.04	0.776	0.566
9/30/1996	12.02	28.01	2.33	23.78	75.54	74.56	54.75	0.755	0.568
10/31/1996	11.60	22.75	1.96	27.21	75.90	75.27	55.60	1.042	0.572
11/30/1996	12.06	24.23	2.01	24.56	76.27	75.99	56.33	0.886	0.575
12/31/1996	11.87	19.23	1.62	18.82	76.63	76.59	56.92	0.830	0.576
1/31/1997	11.65	19.32	1.66	14.97	76.99	77.19	57.38	0.660	0.577
2/28/1997	11.49	22.04	1.92	21.43	77.32	77.81	57.98	0.845	0.579
3/31/1997	10.78	21.29	1.97	21.40	77.65	78.47	58.64	0.877	0.581
4/30/1997	10.68	21.42	2.01	22.82	77.97	79.11	59.33	0.931	0.584
5/31/1997	11.12	21.98	1.98	22.20	78.32	79.79	60.02	0.881	0.586
6/30/1997	10.86	20.29	1.87	21.32	78.64	80.40	60.66	0.910	0.588
7/31/1997	10.79	19.73	1.83	13.83	78.98	81.01	61.09	0.605	0.588
8/31/1997	10.69	22.15	2.07	22.83	79.31	81.70	61.79	0.904	0.591
9/30/1997	10.59	22.57	2.13	22.40	79.63	82.37	62.46	0.874	0.593
10/31/1997	10.49	22.98	2.19	22.65	79.95	83.09	63.17	0.871	0.595
11/30/1997	10.80	22.81	2.11	23.01	80.27	83.77	63.86	0.887	0.597
12/31/1997	10.49	22.88	2.18	22.85	80.60	84.48	64.57	0.882	0.599
1/31/1998	10.51	23.35	2.22	23.23	80.93	85.20	65.29	0.880	0.601
2/28/1998	10.31	22.63	2.19	21.28	81.21	85.84	65.88	0.831	0.603
3/31/1998	28.83	24.48	0.85	24.29	82.11	86.60	66.63	0.740	0.604
4/30/1998	31.54	22.25	0.71	22.08	83.05	87.26	67.30	0.704	0.605
5/31/1998	31.07	21.53	0.69	21.96	84.02	87.93	67.98	0.720	0.606
6/30/1998	30.48	28.48	0.93	28.10	84.93	88.79	68.82	0.753	0.607
7/31/1998	29.27	33.67	1.15	33.75	85.84	89.83	69.87	0.801	0.609
8/31/1998	27.45	33.74	1.23	33.77	86.69	90.88	70.91	0.810	0.612
9/30/1998	25.50	31.55	1.24	31.79	87.45	91.82	71.87	0.817	0.614
10/31/1998	24.99	38.55	1.54	38.49	88.23	93.02	73.06	0.841	0.616

Date	Oil Rate (CD) m3/d	Water Rate (CD) m3/d	Water Oil Ratio m3/m3	Water Inj Rate (CD) m3/d	Cum Oil Prod Km3	Cum Water Prod Km3	Cum Water Inj Km3	Voidage Replacement Ratio	Cum Voidage Replacement Ratio
11/30/1998	23.50	45.91	1.95	46.62	88.93	94.39	74.46	0.885	0.620
12/31/1998	23.39	39.54	1.69	39.60	89.66	95.62	75.69	0.855	0.623
1/31/1999	22.63	39.56	1.75	39.35	90.36	96.85	76.91	0.854	0.625
2/28/1999	22.55	38.64	1.71	38.48	90.99	97.93	77.98	0.852	0.628
3/31/1999	21.78	38.55	1.77	38.64	91.67	99.12	79.18	0.862	0.630
4/30/1999	21.28	39.48	1.85	39.72	92.31	100.31	80.37	0.870	0.633
5/31/1999	20.92	40.18	1.92	40.47	92.95	101.55	81.63	0.875	0.636
6/30/1999	20.57	39.89	1.94	40.17	93.57	102.75	82.83	0.876	0.638
7/31/1999	19.71	38.74	1.96	38.18	94.18	103.95	84.02	0.859	0.640
8/31/1999	19.98	38.38	1.92	38.71	94.80	105.14	85.22	0.877	0.643
9/30/1999	20.04	31.12	1.55	30.60	95.40	106.07	86.14	0.829	0.644
10/31/1999	19.86	33.11	1.67	33.20	96.02	107.10	87.17	0.854	0.646
11/30/1999	19.74	31.23	1.58	31.13	96.61	108.04	88.10	0.843	0.648
12/31/1999	43.94	35.92	0.82	30.49	97.97	109.15	89.04	0.627	0.648
1/31/2000	44.94	37.65	0.84	36.62	99.37	110.32	90.18	0.723	0.649
2/29/2000	52.79	47.48	0.90	32.24	100.90	111.69	91.11	0.514	0.647
3/31/2000	59.19	53.51	0.90	43.29	102.73	113.35	92.46	0.613	0.646
4/30/2000	54.95	53.68	0.98	50.53	104.38	114.96	93.97	0.726	0.647
5/31/2000	53.60	53.83	1.00	58.06	106.04	116.63	95.77	0.837	0.650
6/30/2000	51.73	60.30	1.17	60.23	107.59	118.44	97.58	0.800	0.652
7/31/2000	47.00	55.64	1.18	55.22	109.05	120.17	99.29	0.798	0.654
8/31/2000	45.05	54.12	1.20	50.14	110.45	121.84	100.85	0.747	0.656
9/30/2000	45.85	60.95	1.33	58.55	111.82	123.67	102.60	0.789	0.658
10/31/2000	43.13	59.95	1.39	59.89	113.16	125.53	104.46	0.827	0.660
11/30/2000	41.74	61.47	1.47	60.67	114.41	127.38	106.28	0.825	0.662
12/31/2000	39.77	61.25	1.54	61.19	115.65	129.27	108.17	0.841	0.665
1/31/2001	38.51	61.39	1.59	61.33	116.84	131.18	110.08	0.846	0.667
2/28/2001	36.86	59.15	1.60	59.10	117.87	132.83	111.73	0.847	0.669
3/31/2001	36.21	61.06	1.69	58.40	118.99	134.73	113.54	0.816	0.671
4/30/2001	33.80	60.90	1.80	59.51	120.01	136.55	115.33	0.842	0.673
5/31/2001	32.07	59.83	1.87	59.77	121.00	138.41	117.18	0.865	0.676
6/30/2001	32.45	67.08	2.07	60.02	121.98	140.42	118.98	0.785	0.677
7/31/2001	31.12	63.33	2.04	62.39	122.94	142.38	120.91	0.863	0.680
8/31/2001	30.70	67.37	2.19	66.42	123.89	144.47	122.97	0.871	0.682
9/30/2001	30.59	64.16	2.10	58.14	124.81	146.40	124.72	0.796	0.683
10/31/2001	29.09	72.56	2.49	72.52	125.71	148.65	126.97	0.896	0.686
11/30/2001	29.16	68.14	2.34	65.80	126.59	150.69	128.94	0.859	0.688
12/31/2001	27.99	66.59	2.38	64.38	127.45	152.75	130.94	0.862	0.691
1/31/2002	27.15	67.12	2.47	63.47	128.30	154.84	132.90	0.847	0.692
2/28/2002	26.20	66.36	2.53	62.63	129.03	156.69	134.66	0.847	0.694
3/31/2002	25.60	68.15	2.66	68.09	129.82	158.81	136.77	0.901	0.697
4/30/2002	24.72	67.47	2.73	67.42	130.56	160.83	138.79	0.904	0.699
5/31/2002	23.13	66.06	2.86	66.03	131.28	162.88	140.84	0.908	0.701
6/30/2002	26.24	74.69	2.85	74.42	132.07	165.12	143.07	0.904	0.704
7/31/2002	23.64	71.98	3.05	71.86	132.80	167.35	145.30	0.912	0.706
8/31/2002	24.31	74.02	3.04	71.85	133.55	169.64	147.52	0.886	0.708
9/30/2002	23.18	73.13	3.15	71.03	134.25	171.84	149.66	0.890	0.710
10/31/2002	22.39	72.10	3.22	69.61	134.94	174.07	151.81	0.886	0.712

Date	Oil Rate (CD) m3/d	Water Rate (CD) m3/d	Water Oil Ratio m3/m3	Water Inj Rate (CD) m3/d	Cum Oil Prod Km3	Cum Water Prod Km3	Cum Water Inj Km3	Voidage Replacement Ratio	Cum Voidage Replacement Ratio
11/30/2002	22.26	69.51	3.12	68.93	135.61	176.16	153.88	0.908	0.714
12/31/2002	22.55	70.73	3.14	70.74	136.31	178.35	156.07	0.916	0.717
1/31/2003	22.10	72.30	3.27	72.19	137.00	180.59	158.31	0.917	0.719
2/28/2003	21.91	72.57	3.31	71.75	137.61	182.62	160.32	0.909	0.721
3/31/2003	22.12	75.49	3.41	75.45	138.30	184.96	162.66	0.921	0.723
4/30/2003	20.98	89.77	4.28	92.23	138.93	187.66	165.43	0.962	0.726
5/31/2003	21.05	91.31	4.34	99.55	139.58	190.49	168.51	1.022	0.730
6/30/2003	20.55	90.29	4.39	99.10	140.19	193.20	171.49	1.030	0.734
7/31/2003	20.58	91.11	4.43	96.71	140.83	196.02	174.48	0.996	0.737
8/31/2003	20.41	90.42	4.43	93.87	141.47	198.82	177.39	0.975	0.740
9/30/2003	19.34	82.68	4.27	82.00	142.05	201.30	179.85	0.929	0.742
10/31/2003	18.20	78.48	4.31	77.90	142.61	203.74	182.27	0.930	0.744
11/30/2003	25.41	83.66	3.29	84.70	143.37	206.25	184.81	0.931	0.746
12/31/2003	32.27	83.24	2.58	87.45	144.37	208.83	187.52	0.945	0.748
1/31/2004	30.31	83.82	2.77	89.15	145.31	211.43	190.29	0.963	0.751
2/29/2004	29.34	84.96	2.90	90.52	146.16	213.89	192.91	0.969	0.753
3/31/2004	28.09	88.31	3.14	93.03	147.03	216.63	195.79	0.965	0.756
4/30/2004	26.97	81.10	3.01	85.91	147.84	219.06	198.37	0.966	0.758
5/31/2004	25.55	79.73	3.12	87.27	148.63	221.53	201.08	1.002	0.760
6/30/2004	25.62	85.32	3.33	78.43	149.40	224.09	203.43	0.846	0.761
7/31/2004	24.71	82.53	3.34	93.08	150.17	226.65	206.32	1.038	0.764
8/31/2004	23.83	88.33	3.71	99.23	150.91	229.39	209.39	1.042	0.767
9/30/2004	23.74	87.41	3.68	95.34	151.62	232.01	212.25	1.011	0.769
10/31/2004	22.83	88.15	3.86	90.77	152.33	234.74	215.07	0.958	0.771
11/30/2004	22.20	85.89	3.87	89.85	152.99	237.32	217.76	0.973	0.773
12/31/2004	18.97	90.43	4.77	95.58	153.58	240.12	220.72	0.996	0.776
1/31/2005	22.18	93.36	4.21	95.19	154.27	243.02	223.67	0.954	0.778
2/28/2005	20.97	97.57	4.65	99.99	154.86	245.75	226.47	0.965	0.780
3/31/2005	19.81	98.56	4.97	102.09	155.47	248.80	229.64	0.979	0.782
4/30/2005	19.48	98.41	5.05	101.22	156.06	251.76	232.68	0.973	0.784
5/31/2005	18.37	96.12	5.23	100.32	156.62	254.74	235.79	0.989	0.786
6/30/2005	17.65	96.22	5.45	100.28	157.15	257.62	238.79	0.990	0.788
7/31/2005	18.53	95.44	5.15	98.01	157.73	260.58	241.83	0.972	0.790
8/31/2005	18.17	99.01	5.45	103.91	158.29	263.65	245.05	0.997	0.792
9/30/2005	16.96	96.87	5.71	101.12	158.80	266.56	248.09	0.994	0.794
10/31/2005	16.39	96.24	5.87	101.67	159.31	269.54	251.24	1.007	0.796
11/30/2005	16.60	100.84	6.07	106.67	159.81	272.57	254.44	1.010	0.798
12/31/2005	16.30	99.99	6.14	104.39	160.31	275.67	257.68	0.997	0.800
1/31/2006	16.41	99.12	6.04	100.04	160.82	278.74	260.78	0.963	0.802
2/28/2006	15.51	98.44	6.35	96.92	161.26	281.49	263.49	0.942	0.803
3/31/2006	15.42	100.24	6.50	93.90	161.73	284.60	266.40	0.897	0.804
4/30/2006	16.17	101.35	6.27	106.58	162.22	287.64	269.60	1.005	0.806
5/31/2006	15.05	103.64	6.89	109.06	162.68	290.85	272.98	1.010	0.808
6/30/2006	16.11	106.66	6.62	110.26	163.17	294.05	276.29	0.991	0.810
7/31/2006	15.83	99.51	6.29	100.71	163.66	297.14	279.41	0.968	0.811
8/31/2006	15.73	97.19	6.18	102.11	164.15	300.15	282.57	1.004	0.813
9/30/2006	14.82	96.87	6.54	101.61	164.59	303.06	285.62	1.004	0.815
10/31/2006	14.07	74.26	5.28	79.73	165.03	305.36	288.09	1.018	0.816

Date	Oil Rate (CD) m3/d	Water Rate (CD) m3/d	Water Oil Ratio m3/m3	Water Inj Rate (CD) m3/d	Cum Oil Prod Km3	Cum Water Prod Km3	Cum Water Inj Km3	Voidage Replacement Ratio	Cum Voidage Replacement Ratio
11/30/2006	14.16	98.04	6.92	68.31	165.45	308.30	290.14	0.669	0.815
12/31/2006	14.30	100.63	7.04	68.54	165.90	311.42	292.27	0.654	0.813
1/31/2007	14.01	99.05	7.07	68.73	166.33	314.49	294.40	0.667	0.812
2/28/2007	13.99	97.00	6.93	63.86	166.72	317.21	296.19	0.632	0.811
3/31/2007	13.89	94.10	6.77	62.90	167.15	320.12	298.14	0.641	0.809
4/30/2007	13.59	95.95	7.06	63.49	167.56	323.00	300.04	0.636	0.808
5/31/2007	13.62	96.68	7.10	63.56	167.98	326.00	302.01	0.632	0.806
6/30/2007	12.73	95.93	7.54	62.85	168.36	328.88	303.90	0.631	0.805
7/31/2007	12.87	96.67	7.51	58.62	168.76	331.87	305.72	0.584	0.803
8/31/2007	13.15	91.86	6.98	59.51	169.17	334.72	307.56	0.622	0.802
9/30/2007	13.04	90.53	6.94	51.89	169.56	337.44	309.12	0.550	0.800
10/31/2007	12.45	90.45	7.26	57.65	169.95	340.24	310.90	0.613	0.798
11/30/2007	12.74	90.63	7.12	59.20	170.33	342.96	312.68	0.628	0.797
12/31/2007	12.61	95.11	7.54	58.43	170.72	345.91	314.49	0.592	0.796
1/31/2008	12.16	97.52	8.02	60.93	171.10	348.93	316.38	0.603	0.794
2/29/2008	12.34	98.38	7.97	61.13	171.46	351.79	318.15	0.600	0.793
3/31/2008	11.63	89.64	7.71	91.71	171.82	354.56	321.00	0.986	0.794
4/30/2008	10.97	87.15	7.94	88.77	172.15	357.18	323.66	0.983	0.795
5/31/2008	11.71	95.26	8.14	97.00	172.51	360.13	326.67	0.983	0.797
6/30/2008	11.62	97.24	8.37	99.67	172.86	363.05	329.66	0.991	0.798
7/31/2008	9.24	84.82	9.18	84.39	173.14	365.68	332.27	0.965	0.799
8/31/2008	11.62	99.96	8.60	101.16	173.50	368.78	335.41	0.979	0.801
9/30/2008	11.49	98.10	8.54	99.48	173.85	371.72	338.39	0.981	0.802
10/31/2008	11.33	98.75	8.72	100.95	174.20	374.78	341.52	0.989	0.803
11/30/2008	11.37	99.99	8.79	101.37	174.54	377.78	344.56	0.981	0.805
12/31/2008	9.03	85.37	9.46	90.49	174.82	380.43	347.37	1.029	0.806
1/31/2009	7.72	76.08	9.86	83.50	175.06	382.79	349.96	1.066	0.807
2/28/2009	10.00	97.03	9.70	103.40	175.34	385.50	352.85	1.035	0.809
3/31/2009	10.15	99.46	9.79	104.24	175.65	388.59	356.08	1.018	0.810
4/30/2009	9.78	93.98	9.61	97.41	175.95	391.41	359.01	1.006	0.812
5/31/2009	10.16	101.05	9.94	109.11	176.26	394.54	362.39	1.049	0.813
6/30/2009	9.36	94.81	10.13	99.89	176.54	397.38	365.38	1.024	0.815
7/31/2009	10.20	99.39	9.74	104.79	176.86	400.46	368.63	1.024	0.816
8/31/2009	10.04	99.27	9.89	106.45	177.17	403.54	371.93	1.042	0.818
9/30/2009	9.88	96.64	9.78	105.06	177.47	406.44	375.08	1.056	0.819
10/31/2009	9.60	95.78	9.97	102.77	177.77	409.41	378.27	1.043	0.821
11/30/2009	9.46	95.06	10.05	102.85	178.05	412.26	381.36	1.052	0.822
12/31/2009	9.46	92.21	9.75	99.77	178.34	415.12	384.45	1.051	0.824
1/31/2010	9.24	94.25	10.20	100.23	178.63	418.04	387.56	1.034	0.825
2/28/2010	9.00	93.49	10.39	101.33	178.88	420.66	390.39	1.055	0.826
3/31/2010	9.18	95.17	10.36	102.51	179.17	423.61	393.57	1.048	0.828
4/30/2010	9.03	94.18	10.43	101.49	179.44	426.44	396.62	1.048	0.829
5/31/2010	9.05	95.84	10.58	103.39	179.72	429.41	399.82	1.050	0.831
6/30/2010	8.24	89.23	10.83	94.57	179.96	432.08	402.66	1.032	0.832
7/31/2010	9.00	92.64	10.29	100.27	180.24	434.95	405.77	1.053	0.833
8/31/2010	8.91	92.85	10.43	98.60	180.52	437.83	408.82	1.033	0.834
9/30/2010	8.51	91.67	10.78	99.11	180.77	440.58	411.80	1.053	0.836
10/31/2010	8.37	88.33	10.56	93.54	181.03	443.32	414.70	1.031	0.837

Date	Oil Rate (CD) m3/d	Water Rate (CD) m3/d	Water Oil Ratio m3/m3	Water Inj Rate (CD) m3/d	Cum Oil Prod Km3	Cum Water Prod Km3	Cum Water Inj Km3	Voidage Replacement Ratio	Cum Voidage Replacement Ratio
11/30/2010	8.24	88.72	10.77	94.95	181.28	445.98	417.54	1.042	0.838
12/31/2010	8.25	86.95	10.55	88.90	181.54	448.68	420.30	0.995	0.839

Pattern: 12-29-11-26 Set: North Virden Scallion Unit # 2

Oil Formation Vol. Factor : 1.05 m3/m3

Water Formation Vol Factor : 1.00 m3/m3

Water / Oil Ratio : 11.23 m3/m3

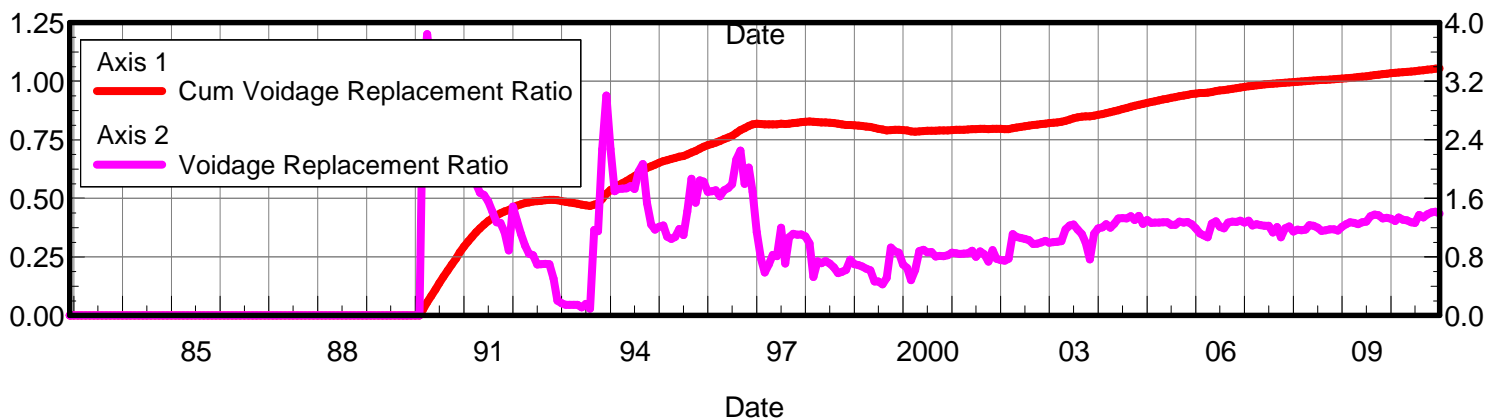
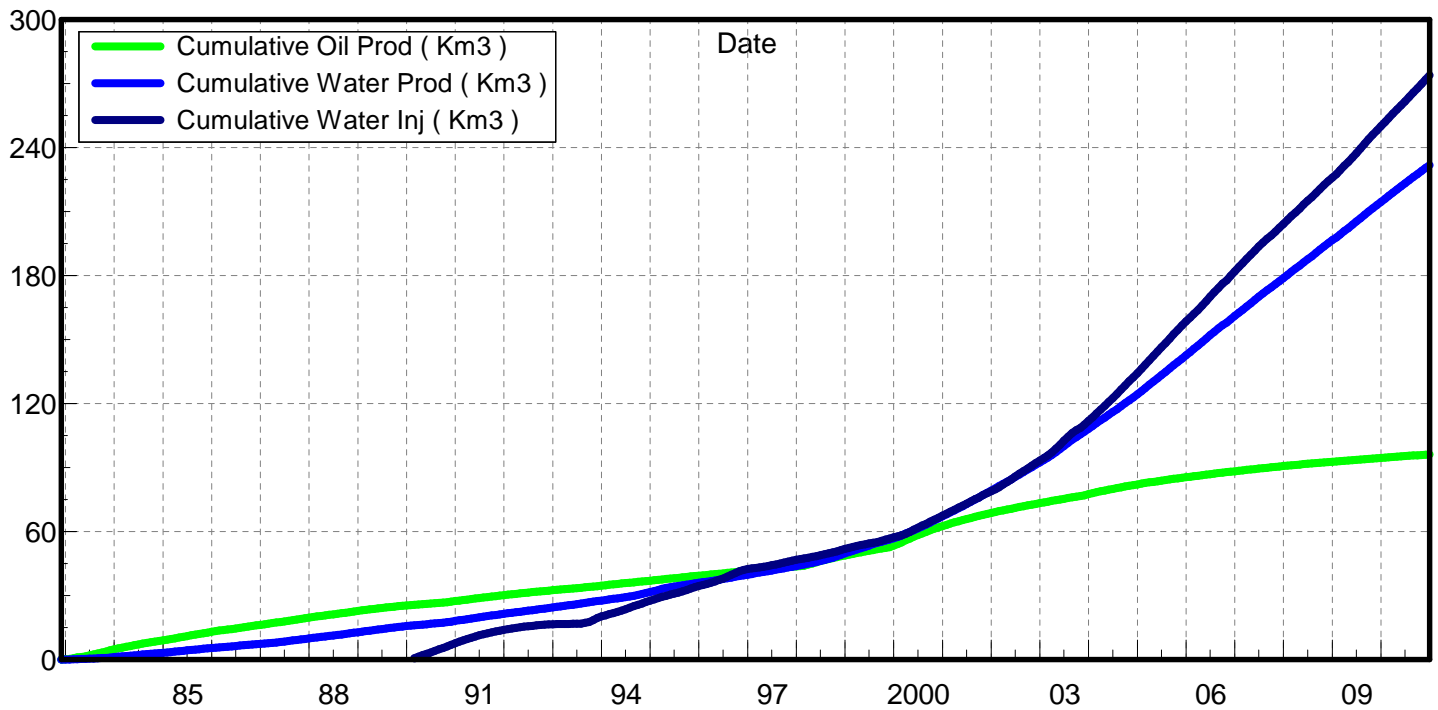
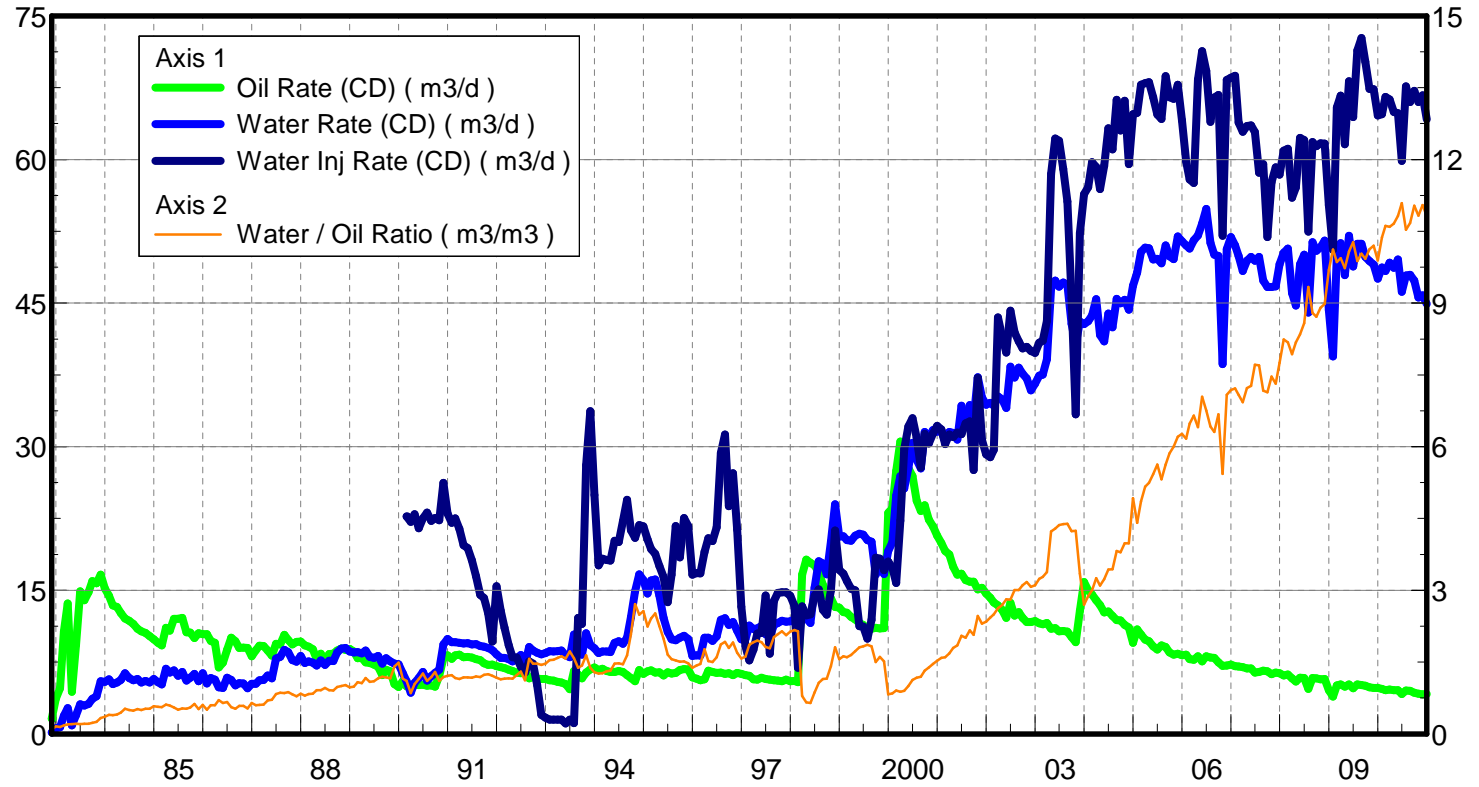
July 25, 2011

Operator: Tundra_Oil_and_Gas_Patnership

Oil Rate (CD) : 3.95 m3/d

Water Rate (CD) : 44.40 m3/d

Water Inj Rate (CD) : 65.50 m3/d



Pattern: 04-32-11-26 Set: North Virden Scallion Unit # 2

Oil Formation Vol. Factor : 1.05 m3/m3

Water Formation Vol Factor : 1.00 m3/m3

Water / Oil Ratio : 9.23 m3/m3

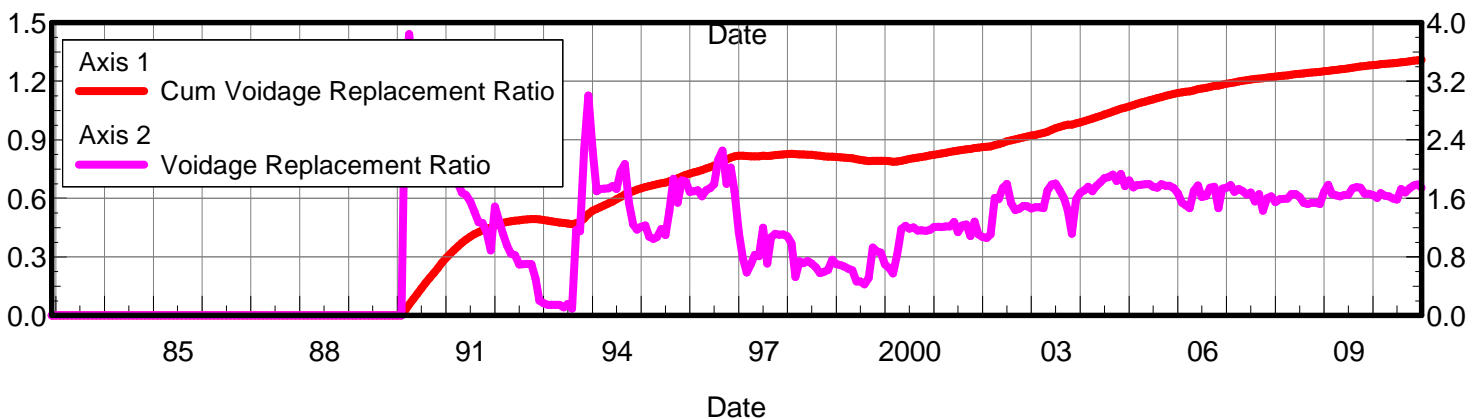
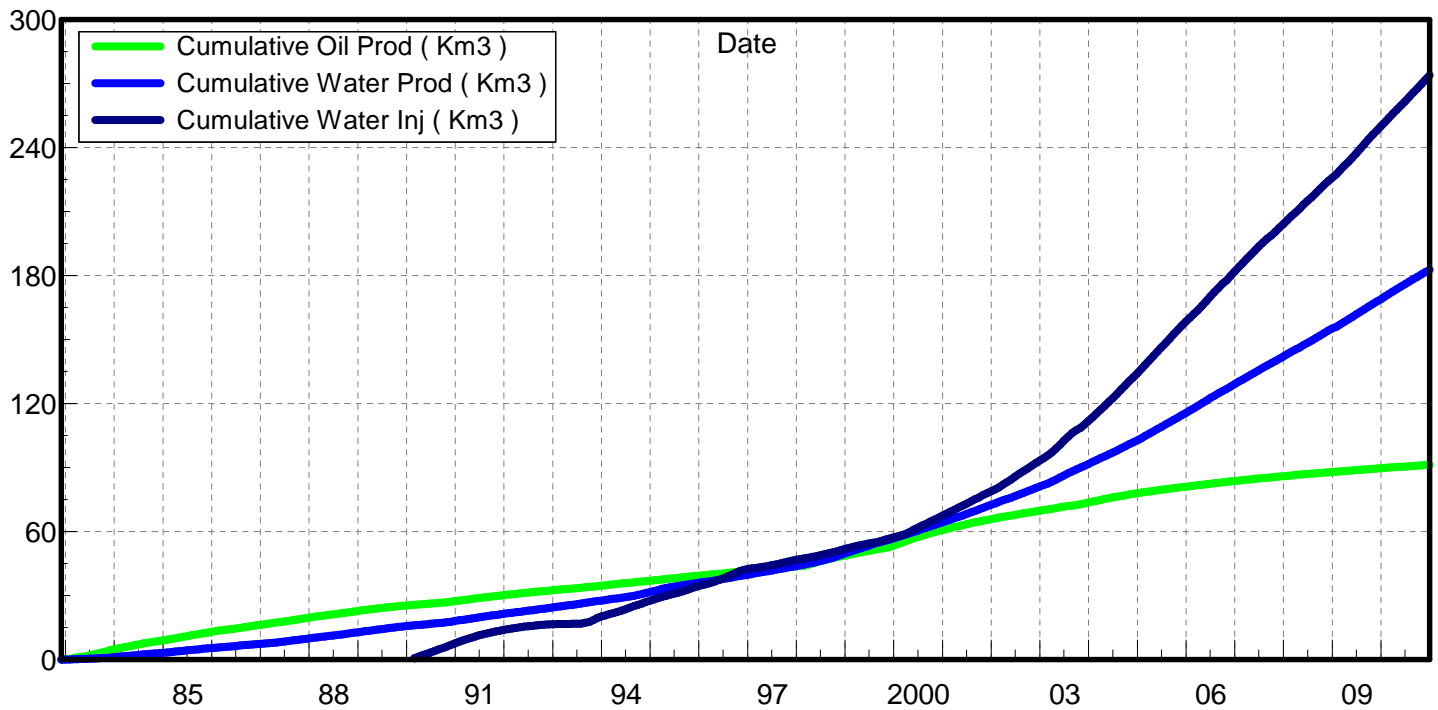
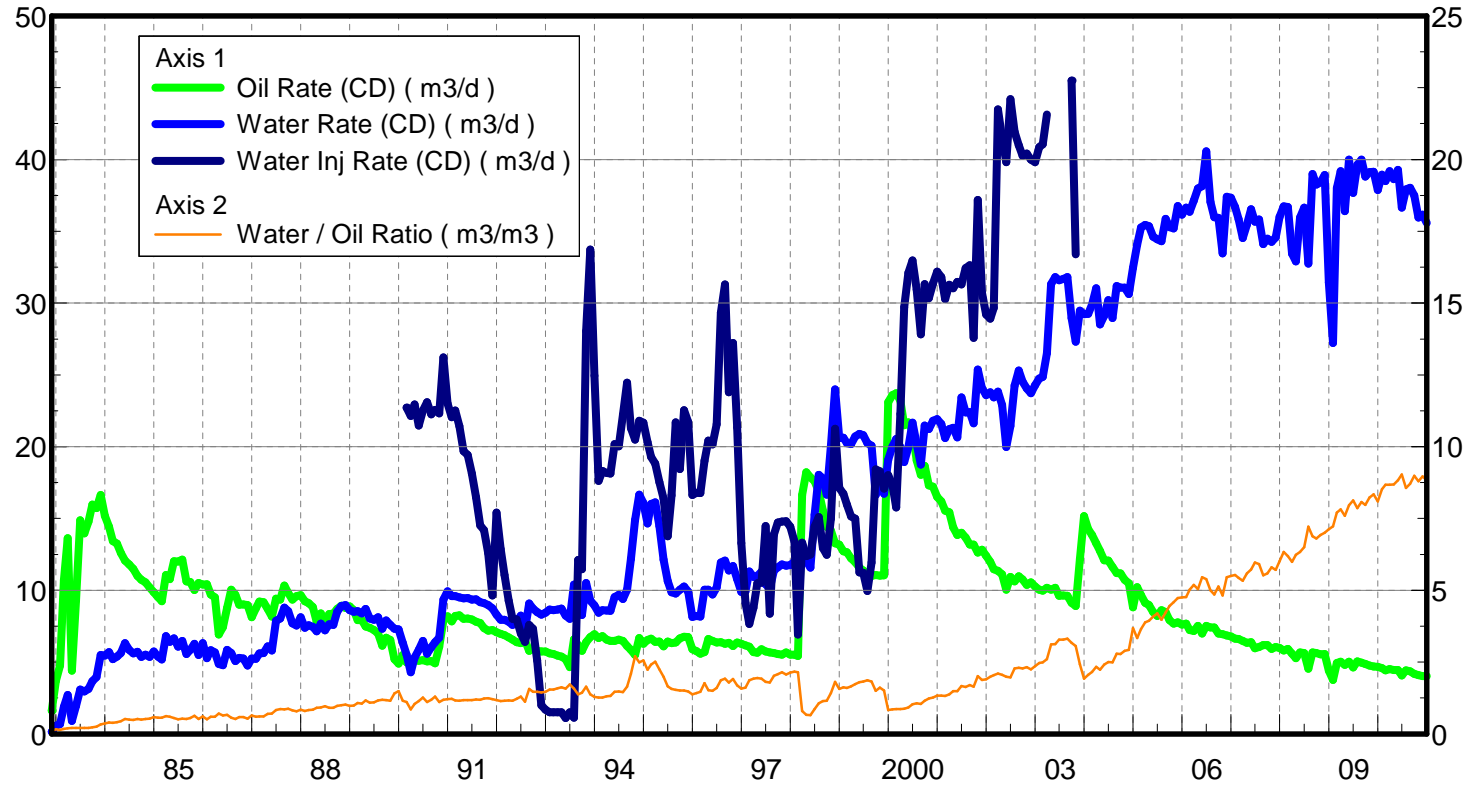
July 25, 2011

Operator: Tundra_Oil_and_Gas_Patnership

Oil Rate (CD) : 3.83 m3/d

Water Rate (CD) : 35.39 m3/d

Water Inj Rate (CD) : 65.50 m3/d



Date	Oil Rate (CD) m3/d	Water Rate (CD) m3/d	Water Oil Ratio m3/m3	Water Inj Rate (CD) m3/d	Cum Oil Prod Km3	Cum Water Prod Km3	Cum Water Inj Km3	Voidage Replacement Ratio	Cum Voidage Replacement Ratio
11/30/1982	1.61	0.15	0.09		0.05	0.00	0.00	0.000	0.000
12/31/1982	3.70	0.58	0.16		0.16	0.02	0.00	0.000	0.000
1/31/1983	4.76	0.68	0.14		0.31	0.04	0.00	0.000	0.000
2/28/1983	10.69	1.88	0.18		0.61	0.10	0.00	0.000	0.000
3/31/1983	13.63	2.71	0.20		1.03	0.18	0.00	0.000	0.000
4/30/1983	4.41	0.90	0.20		1.16	0.21	0.00	0.000	0.000
5/31/1983	9.30	1.96	0.21		1.45	0.27	0.00	0.000	0.000
6/30/1983	14.88	3.08	0.21		1.90	0.36	0.00	0.000	0.000
7/31/1983	13.97	2.95	0.21		2.33	0.45	0.00	0.000	0.000
8/31/1983	14.79	3.13	0.21		2.79	0.55	0.00	0.000	0.000
9/30/1983	15.97	3.66	0.23		3.27	0.66	0.00	0.000	0.000
10/31/1983	15.72	3.95	0.25		3.76	0.78	0.00	0.000	0.000
11/30/1983	16.65	5.50	0.33		4.26	0.95	0.00	0.000	0.000
12/31/1983	15.18	5.44	0.36		4.73	1.11	0.00	0.000	0.000
1/31/1984	14.43	5.70	0.40		5.17	1.29	0.00	0.000	0.000
2/29/1984	13.43	5.22	0.39		5.56	1.44	0.00	0.000	0.000
3/31/1984	13.26	5.38	0.41		5.98	1.61	0.00	0.000	0.000
4/30/1984	12.61	5.62	0.45		6.35	1.78	0.00	0.000	0.000
5/31/1984	12.06	6.32	0.52		6.73	1.97	0.00	0.000	0.000
6/30/1984	11.81	5.85	0.50		7.08	2.15	0.00	0.000	0.000
7/31/1984	11.50	5.61	0.49		7.44	2.32	0.00	0.000	0.000
8/31/1984	11.00	5.73	0.52		7.78	2.50	0.00	0.000	0.000
9/30/1984	10.73	5.36	0.50		8.10	2.66	0.00	0.000	0.000
10/31/1984	10.55	5.52	0.52		8.43	2.83	0.00	0.000	0.000
11/30/1984	10.21	5.37	0.53		8.73	2.99	0.00	0.000	0.000
12/31/1984	9.87	5.73	0.58		9.04	3.17	0.00	0.000	0.000
1/31/1985	9.53	5.39	0.57		9.34	3.34	0.00	0.000	0.000
2/28/1985	9.24	5.17	0.56		9.59	3.48	0.00	0.000	0.000
3/31/1985	11.07	6.82	0.62		9.94	3.69	0.00	0.000	0.000
4/30/1985	10.77	6.40	0.59		10.26	3.89	0.00	0.000	0.000
5/31/1985	12.03	6.64	0.55		10.63	4.09	0.00	0.000	0.000
6/30/1985	12.00	6.07	0.51		10.99	4.27	0.00	0.000	0.000
7/31/1985	12.13	6.47	0.53		11.37	4.48	0.00	0.000	0.000
8/31/1985	10.62	5.55	0.52		11.70	4.65	0.00	0.000	0.000
9/30/1985	10.57	5.86	0.55		12.02	4.82	0.00	0.000	0.000
10/31/1985	10.01	6.27	0.63		12.33	5.02	0.00	0.000	0.000
11/30/1985	10.51	5.49	0.52		12.64	5.18	0.00	0.000	0.000
12/31/1985	10.40	6.33	0.61		12.96	5.38	0.00	0.000	0.000
1/31/1986	10.43	5.27	0.51		13.29	5.54	0.00	0.000	0.000
2/28/1986	9.70	5.83	0.60		13.56	5.70	0.00	0.000	0.000
3/31/1986	9.50	5.67	0.60		13.85	5.88	0.00	0.000	0.000
4/30/1986	6.93	4.88	0.70		14.06	6.03	0.00	0.000	0.000
5/31/1986	7.42	4.79	0.65		14.29	6.18	0.00	0.000	0.000
6/30/1986	8.76	5.85	0.67		14.55	6.35	0.00	0.000	0.000
7/31/1986	10.03	5.63	0.56		14.87	6.53	0.00	0.000	0.000
8/31/1986	9.69	5.08	0.52		15.17	6.68	0.00	0.000	0.000
9/30/1986	8.99	5.29	0.59		15.44	6.84	0.00	0.000	0.000
10/31/1986	9.01	5.25	0.58		15.71	7.00	0.00	0.000	0.000

Date	Oil Rate (CD) m3/d	Water Rate (CD) m3/d	Water Oil Ratio m3/m3	Water Inj Rate (CD) m3/d	Cum Oil Prod Km3	Cum Water Prod Km3	Cum Water Inj Km3	Voidage Replacement Ratio	Cum Voidage Replacement Ratio
11/30/1986	8.98	4.76	0.53		15.98	7.15	0.00	0.000	0.000
12/31/1986	8.12	5.24	0.65		16.24	7.31	0.00	0.000	0.000
1/31/1987	8.75	5.23	0.60		16.51	7.47	0.00	0.000	0.000
2/28/1987	9.22	5.62	0.61		16.77	7.63	0.00	0.000	0.000
3/31/1987	9.17	5.62	0.61		17.05	7.80	0.00	0.000	0.000
4/30/1987	8.71	6.09	0.70		17.31	7.99	0.00	0.000	0.000
5/31/1987	8.16	5.80	0.71		17.56	8.17	0.00	0.000	0.000
6/30/1987	9.41	7.87	0.84		17.85	8.40	0.00	0.000	0.000
7/31/1987	9.34	8.04	0.86		18.14	8.65	0.00	0.000	0.000
8/31/1987	10.33	8.79	0.85		18.46	8.92	0.00	0.000	0.000
9/30/1987	9.81	8.55	0.87		18.75	9.18	0.00	0.000	0.000
10/31/1987	9.34	7.69	0.82		19.04	9.42	0.00	0.000	0.000
11/30/1987	9.61	7.55	0.79		19.33	9.65	0.00	0.000	0.000
12/31/1987	9.66	8.13	0.84		19.63	9.90	0.00	0.000	0.000
1/31/1988	9.25	7.40	0.80		19.91	10.13	0.00	0.000	0.000
2/29/1988	9.10	7.56	0.83		20.18	10.35	0.00	0.000	0.000
3/31/1988	8.84	7.45	0.84		20.45	10.58	0.00	0.000	0.000
4/30/1988	7.81	7.14	0.91		20.69	10.79	0.00	0.000	0.000
5/31/1988	8.39	7.67	0.91		20.95	11.03	0.00	0.000	0.000
6/30/1988	7.48	7.20	0.96		21.17	11.25	0.00	0.000	0.000
7/31/1988	8.36	7.63	0.91		21.43	11.48	0.00	0.000	0.000
8/31/1988	8.38	7.60	0.91		21.69	11.72	0.00	0.000	0.000
9/30/1988	8.71	8.51	0.98		21.95	11.97	0.00	0.000	0.000
10/31/1988	8.93	8.90	1.00		22.23	12.25	0.00	0.000	0.000
11/30/1988	8.77	8.96	1.02		22.49	12.52	0.00	0.000	0.000
12/31/1988	8.88	8.62	0.97		22.77	12.78	0.00	0.000	0.000
1/31/1989	8.61	8.51	0.99		23.03	13.05	0.00	0.000	0.000
2/28/1989	7.92	8.56	1.08		23.25	13.29	0.00	0.000	0.000
3/31/1989	7.93	8.39	1.06		23.50	13.55	0.00	0.000	0.000
4/30/1989	7.47	8.70	1.16		23.72	13.81	0.00	0.000	0.000
5/31/1989	7.40	8.04	1.09		23.95	14.06	0.00	0.000	0.000
6/30/1989	7.24	7.96	1.10		24.17	14.30	0.00	0.000	0.000
7/31/1989	7.00	8.13	1.16		24.39	14.55	0.00	0.000	0.000
8/31/1989	6.15	7.33	1.19		24.58	14.78	0.00	0.000	0.000
9/30/1989	6.71	7.91	1.18		24.78	15.01	0.00	0.000	0.000
10/31/1989	6.54	7.58	1.16		24.98	15.25	0.00	0.000	0.000
11/30/1989	5.21	7.32	1.41		25.14	15.47	0.00	0.000	0.000
12/31/1989	4.90	7.28	1.49		25.29	15.69	0.00	0.000	0.000
1/31/1990	5.50	6.34	1.15		25.46	15.89	0.00	0.000	0.000
2/28/1990	4.98	5.51	1.11	22.72	25.60	16.04	0.64	3.268	0.027
3/31/1990	5.05	4.30	0.85	22.14	25.76	16.18	1.32	3.842	0.056
4/30/1990	5.12	5.32	1.04	22.95	25.91	16.34	2.01	3.374	0.084
5/31/1990	5.10	5.84	1.15	21.48	26.07	16.52	2.68	2.936	0.111
6/30/1990	5.13	6.49	1.26	22.51	26.22	16.71	3.35	2.825	0.138
7/31/1990	5.05	5.58	1.11	23.11	26.38	16.89	4.07	3.281	0.166
8/31/1990	5.08	6.03	1.19	22.25	26.54	17.07	4.76	2.968	0.192
9/30/1990	4.92	6.38	1.30	22.56	26.68	17.26	5.44	2.890	0.218
10/31/1990	6.07	6.70	1.10	22.31	26.87	17.47	6.13	2.639	0.243

Date	Oil Rate (CD) m3/d	Water Rate (CD) m3/d	Water Oil Ratio m3/m3	Water Inj Rate (CD) m3/d	Cum Oil Prod Km3	Cum Water Prod Km3	Cum Water Inj Km3	Voidage Replacement Ratio	Cum Voidage Replacement Ratio
11/30/1990	7.90	9.36	1.18	26.21	27.11	17.75	6.91	2.252	0.270
12/31/1990	8.19	9.92	1.21	23.01	27.36	18.06	7.63	1.873	0.294
1/31/1991	7.83	9.60	1.23	22.05	27.61	18.36	8.31	1.859	0.315
2/28/1991	8.21	9.59	1.17	22.52	27.84	18.63	8.94	1.883	0.335
3/31/1991	8.27	9.51	1.15	21.42	28.09	18.92	9.60	1.800	0.355
4/30/1991	8.01	9.45	1.18	19.69	28.33	19.20	10.20	1.674	0.372
5/31/1991	8.04	9.47	1.18	19.42	28.58	19.50	10.80	1.647	0.389
6/30/1991	7.97	9.34	1.17	18.13	28.82	19.78	11.34	1.557	0.403
7/31/1991	7.80	9.37	1.20	16.47	29.06	20.07	11.85	1.417	0.416
8/31/1991	7.71	9.16	1.19	14.52	29.30	20.35	12.30	1.275	0.427
9/30/1991	7.36	9.11	1.24	14.19	29.52	20.63	12.73	1.263	0.436
10/31/1991	7.20	8.97	1.25	12.58	29.75	20.90	13.12	1.139	0.445
11/30/1991	7.22	8.76	1.21	9.63	29.96	21.17	13.41	0.888	0.449
12/31/1991	7.07	8.31	1.18	15.42	30.18	21.42	13.88	1.489	0.460
1/31/1992	6.97	7.95	1.14	12.87	30.40	21.67	14.28	1.292	0.469
2/29/1992	6.89	7.94	1.15	11.07	30.60	21.90	14.61	1.115	0.475
3/31/1992	6.71	7.80	1.16	9.28	30.81	22.14	14.89	0.952	0.480
4/30/1992	6.56	7.58	1.16	8.01	31.00	22.37	15.13	0.845	0.483
5/31/1992	6.40	7.84	1.23	7.97	31.20	22.61	15.38	0.822	0.486
6/30/1992	6.32	8.23	1.30	7.00	31.39	22.86	15.59	0.695	0.488
7/31/1992	6.49	7.26	1.12	6.41	31.59	23.09	15.79	0.701	0.490
8/31/1992	5.79	9.08	1.57	7.59	31.77	23.37	16.02	0.706	0.492
9/30/1992	5.93	8.72	1.47	7.33	31.95	23.63	16.24	0.702	0.494
10/31/1992	5.78	8.49	1.47	5.11	32.13	23.89	16.40	0.503	0.494
11/30/1992	5.74	8.29	1.44	2.00	32.30	24.14	16.46	0.201	0.492
12/31/1992	5.75	8.43	1.47	1.69	32.48	24.40	16.51	0.167	0.489
1/31/1993	5.61	8.65	1.54	1.50	32.65	24.67	16.56	0.146	0.485
2/28/1993	5.56	8.62	1.55	1.50	32.81	24.91	16.60	0.147	0.483
3/31/1993	5.45	8.65	1.59	1.50	32.98	25.18	16.65	0.147	0.480
4/30/1993	5.37	8.72	1.62	1.50	33.14	25.44	16.69	0.146	0.477
5/31/1993	5.21	8.23	1.58	1.10	33.30	25.70	16.73	0.113	0.474
6/30/1993	4.66	8.02	1.72	1.50	33.44	25.94	16.77	0.160	0.471
7/31/1993	6.58	10.39	1.58	1.14	33.64	26.26	16.81	0.092	0.467
8/31/1993	6.20	8.56	1.38	12.11	33.84	26.52	17.18	1.169	0.473
9/30/1993	5.79	8.28	1.43	11.48	34.01	26.77	17.53	1.153	0.479
10/31/1993	6.40	10.50	1.64	28.05	34.21	27.10	18.40	2.272	0.497
11/30/1993	6.74	9.28	1.38	33.73	34.41	27.38	19.41	3.003	0.520
12/31/1993	6.95	8.96	1.29	24.94	34.63	27.65	20.18	2.274	0.536
1/31/1994	6.69	8.44	1.26	17.61	34.83	27.92	20.73	1.697	0.546
2/28/1994	6.80	8.62	1.27	18.31	35.02	28.16	21.24	1.730	0.555
3/31/1994	6.57	8.59	1.31	18.17	35.23	28.42	21.80	1.731	0.565
4/30/1994	6.47	8.56	1.32	18.12	35.42	28.68	22.35	1.737	0.574
5/31/1994	6.48	9.53	1.47	20.18	35.62	28.98	22.97	1.770	0.585
6/30/1994	6.56	9.69	1.48	20.03	35.82	29.27	23.57	1.729	0.595
7/31/1994	6.47	9.40	1.45	22.22	36.02	29.56	24.26	1.970	0.607
8/31/1994	6.13	10.04	1.64	24.45	36.21	29.87	25.02	2.070	0.620
9/30/1994	5.84	12.19	2.09	21.29	36.38	30.24	25.66	1.534	0.630
10/31/1994	5.50	14.90	2.71	20.49	36.56	30.70	26.30	1.243	0.637

Date	Oil Rate (CD) m3/d	Water Rate (CD) m3/d	Water Oil Ratio m3/m3	Water Inj Rate (CD) m3/d	Cum Oil Prod Km3	Cum Water Prod Km3	Cum Water Inj Km3	Voidage Replacement Ratio	Cum Voidage Replacement Ratio
11/30/1994	6.68	16.66	2.49	21.80	36.76	31.20	26.95	1.173	0.644
12/31/1994	6.28	16.08	2.56	21.67	36.95	31.70	27.62	1.211	0.652
1/31/1995	6.54	14.66	2.24	20.32	37.15	32.15	28.25	1.228	0.659
2/28/1995	6.64	16.02	2.41	19.30	37.34	32.60	28.79	1.076	0.663
3/31/1995	6.40	16.12	2.52	18.81	37.54	33.10	29.37	1.047	0.668
4/30/1995	6.43	14.47	2.25	17.52	37.73	33.53	29.90	1.073	0.673
5/31/1995	6.10	12.14	1.99	16.40	37.92	33.91	30.41	1.180	0.678
6/30/1995	6.43	10.64	1.65	13.75	38.11	34.23	30.82	1.100	0.681
7/31/1995	6.31	9.87	1.56	16.62	38.31	34.53	31.34	1.421	0.687
8/31/1995	6.35	9.77	1.54	21.70	38.51	34.84	32.01	1.870	0.696
9/30/1995	6.66	10.05	1.51	18.43	38.71	35.14	32.56	1.540	0.703
10/31/1995	6.77	10.26	1.52	22.54	38.91	35.46	33.26	1.845	0.712
11/30/1995	6.73	9.91	1.47	21.71	39.12	35.75	33.91	1.830	0.721
12/31/1995	5.90	8.15	1.38	16.65	39.30	36.01	34.43	1.689	0.727
1/31/1996	5.77	8.22	1.43	16.78	39.48	36.26	34.95	1.697	0.733
2/29/1996	5.59	8.17	1.46	16.76	39.64	36.50	35.44	1.712	0.739
3/31/1996	5.69	10.04	1.77	19.01	39.82	36.81	36.02	1.627	0.745
4/30/1996	6.60	10.05	1.52	20.43	40.02	37.11	36.64	1.709	0.753
5/31/1996	6.48	9.71	1.50	20.16	40.22	37.41	37.26	1.741	0.760
6/30/1996	6.37	10.19	1.60	21.57	40.41	37.72	37.91	1.792	0.767
7/31/1996	6.39	11.93	1.87	29.32	40.61	38.09	38.82	2.128	0.779
8/31/1996	6.28	12.08	1.92	31.29	40.80	38.46	39.79	2.252	0.792
9/30/1996	6.35	11.39	1.79	23.78	40.99	38.80	40.50	1.799	0.800
10/31/1996	6.13	11.68	1.91	27.21	41.18	39.17	41.35	2.022	0.810
11/30/1996	6.37	10.78	1.69	21.34	41.37	39.49	41.99	1.690	0.816
12/31/1996	6.27	9.88	1.58	13.28	41.57	39.80	42.40	1.136	0.818
1/31/1997	6.15	9.92	1.61	9.13	41.76	40.10	42.68	0.780	0.818
2/28/1997	6.07	11.32	1.86	7.66	41.93	40.42	42.90	0.586	0.816
3/31/1997	5.70	10.93	1.92	8.80	42.10	40.76	43.17	0.699	0.815
4/30/1997	5.66	11.01	1.95	10.49	42.27	41.09	43.48	0.830	0.816
5/31/1997	5.89	11.29	1.92	10.54	42.46	41.44	43.81	0.811	0.816
6/30/1997	5.75	10.43	1.81	14.47	42.63	41.75	44.24	1.197	0.818
7/31/1997	5.67	10.14	1.79	8.38	42.80	42.07	44.50	0.711	0.817
8/31/1997	5.62	11.38	2.03	13.90	42.98	42.42	44.93	1.069	0.819
9/30/1997	5.57	11.60	2.08	14.72	43.14	42.77	45.38	1.114	0.821
10/31/1997	5.51	11.80	2.14	14.79	43.32	43.13	45.83	1.104	0.823
11/30/1997	5.68	11.72	2.06	14.80	43.49	43.48	46.28	1.108	0.825
12/31/1997	5.51	11.76	2.13	14.44	43.66	43.85	46.73	1.082	0.827
1/31/1998	5.52	12.00	2.17	13.41	43.83	44.22	47.14	0.986	0.829
2/28/1998	5.42	11.63	2.15	6.91	43.98	44.55	47.33	0.524	0.827
3/31/1998	16.64	13.20	0.79	13.33	44.50	44.95	47.75	0.740	0.826
4/30/1998	18.22	12.05	0.66	12.38	45.04	45.32	48.12	0.715	0.825
5/31/1998	17.86	11.58	0.65	12.50	45.60	45.68	48.51	0.746	0.824
6/30/1998	17.60	15.25	0.87	14.44	46.12	46.13	48.94	0.710	0.823
7/31/1998	16.88	18.03	1.07	15.10	46.65	46.69	49.41	0.659	0.821
8/31/1998	15.56	17.80	1.14	12.95	47.13	47.24	49.81	0.581	0.818
9/30/1998	14.42	16.67	1.16	12.46	47.56	47.74	50.18	0.598	0.816
10/31/1998	14.16	20.07	1.42	14.99	48.00	48.37	50.65	0.620	0.814

Date	Oil Rate (CD) m3/d	Water Rate (CD) m3/d	Water Oil Ratio m3/m3	Water Inj Rate (CD) m3/d	Cum Oil Prod Km3	Cum Water Prod Km3	Cum Water Inj Km3	Voidage Replacement Ratio	Cum Voidage Replacement Ratio
11/30/1998	13.27	23.98	1.81	21.24	48.40	49.09	51.28	0.764	0.813
12/31/1998	13.19	20.61	1.56	17.14	48.81	49.72	51.82	0.701	0.812
1/31/1999	12.72	20.63	1.62	16.73	49.20	50.36	52.33	0.688	0.810
2/28/1999	12.65	20.24	1.60	15.98	49.56	50.93	52.78	0.669	0.809
3/31/1999	12.23	20.19	1.65	15.15	49.94	51.56	53.25	0.639	0.807
4/30/1999	11.96	20.71	1.73	14.98	50.29	52.18	53.70	0.620	0.805
5/31/1999	11.57	20.90	1.81	11.25	50.65	52.83	54.05	0.464	0.801
6/30/1999	11.39	20.80	1.83	11.21	51.00	53.45	54.39	0.465	0.797
7/31/1999	10.87	20.24	1.86	9.96	51.33	54.08	54.70	0.426	0.794
8/31/1999	10.99	20.08	1.83	11.94	51.67	54.70	55.07	0.513	0.791
9/30/1999	11.07	16.64	1.50	18.41	52.00	55.20	55.62	0.928	0.792
10/31/1999	11.02	17.70	1.61	18.30	52.35	55.75	56.18	0.876	0.793
11/30/1999	11.04	16.72	1.51	17.09	52.68	56.25	56.70	0.858	0.793
12/31/1999	23.10	19.10	0.83	18.01	53.39	56.84	57.26	0.699	0.792
1/31/2000	23.59	20.00	0.85	17.36	54.13	57.46	57.79	0.647	0.790
2/29/2000	23.73	20.53	0.86	15.78	54.81	58.06	58.25	0.576	0.788
3/31/2000	23.22	19.99	0.86	22.27	55.53	58.68	58.94	0.834	0.789
4/30/2000	21.49	18.93	0.88	29.72	56.18	59.24	59.83	1.182	0.793
5/31/2000	21.69	19.95	0.92	32.11	56.85	59.86	60.83	1.225	0.797
6/30/2000	21.09	21.68	1.03	32.97	57.48	60.51	61.82	1.187	0.801
7/31/2000	19.04	20.17	1.06	30.94	58.07	61.14	62.78	1.205	0.806
8/31/2000	18.03	18.75	1.04	27.82	58.63	61.72	63.64	1.161	0.809
9/30/2000	18.67	21.47	1.15	31.33	59.19	62.36	64.58	1.166	0.812
10/31/2000	17.31	21.24	1.23	30.34	59.73	63.02	65.52	1.156	0.816
11/30/2000	17.21	21.82	1.27	31.37	60.25	63.68	66.46	1.171	0.819
12/31/2000	16.50	21.91	1.33	32.19	60.76	64.36	67.46	1.206	0.823
1/31/2001	16.19	21.58	1.33	31.81	61.26	65.02	68.44	1.211	0.827
2/28/2001	15.55	20.61	1.32	30.29	61.69	65.60	69.29	1.206	0.830
3/31/2001	15.44	21.22	1.37	31.27	62.17	66.26	70.26	1.217	0.834
4/30/2001	14.38	21.32	1.48	31.02	62.60	66.90	71.19	1.217	0.838
5/31/2001	13.86	20.64	1.49	31.49	63.03	67.54	72.17	1.277	0.841
6/30/2001	14.01	23.43	1.67	31.30	63.45	68.24	73.11	1.139	0.844
7/31/2001	13.66	22.39	1.64	32.44	63.88	68.94	74.11	1.232	0.848
8/31/2001	13.18	22.41	1.70	32.65	64.29	69.63	75.13	1.245	0.852
9/30/2001	13.19	21.63	1.64	27.57	64.68	70.28	75.95	1.084	0.854
10/31/2001	12.62	25.38	2.01	37.18	65.07	71.07	77.11	1.281	0.858
11/30/2001	12.83	24.08	1.88	30.72	65.46	71.79	78.03	1.105	0.860
12/31/2001	12.40	23.59	1.90	29.20	65.84	72.52	78.93	1.074	0.862
1/31/2002	11.99	23.79	1.98	28.91	66.21	73.26	79.83	1.061	0.864
2/28/2002	11.48	23.43	2.04	29.67	66.54	73.91	80.66	1.109	0.866
3/31/2002	11.36	23.83	2.10	43.50	66.89	74.65	82.01	1.604	0.872
4/30/2002	11.12	22.90	2.06	41.49	67.22	75.34	83.25	1.589	0.878
5/31/2002	10.03	19.97	1.99	39.82	67.53	75.96	84.49	1.741	0.885
6/30/2002	10.93	21.46	1.96	44.21	67.86	76.60	85.81	1.796	0.892
7/31/2002	10.63	24.26	2.28	41.94	68.19	77.35	87.11	1.534	0.897
8/31/2002	10.98	25.30	2.30	41.00	68.53	78.14	88.38	1.440	0.902
9/30/2002	10.76	24.53	2.28	40.27	68.85	78.87	89.59	1.457	0.907
10/31/2002	10.37	24.05	2.32	40.42	69.17	79.62	90.84	1.494	0.912

Date	Oil Rate (CD) m3/d	Water Rate (CD) m3/d	Water Oil Ratio m3/m3	Water Inj Rate (CD) m3/d	Cum Oil Prod Km3	Cum Water Prod Km3	Cum Water Inj Km3	Voidage Replacement Ratio	Cum Voidage Replacement Ratio
11/30/2002	10.56	23.73	2.25	40.00	69.49	80.33	92.04	1.493	0.917
12/31/2002	10.27	24.28	2.36	39.81	69.81	81.08	93.28	1.461	0.921
1/31/2003	10.05	24.76	2.46	40.87	70.12	81.85	94.55	1.477	0.926
2/28/2003	9.96	24.86	2.50	41.07	70.40	82.55	95.70	1.480	0.930
3/31/2003	10.16	26.50	2.61	43.13	70.72	83.37	97.03	1.465	0.935
4/30/2003	10.05	31.32	3.12	58.50	71.02	84.31	98.79	1.709	0.942
5/31/2003	10.17	31.81	3.13	62.19	71.33	85.30	100.72	1.790	0.951
6/30/2003	9.62	31.60	3.29	61.97	71.62	86.24	102.57	1.802	0.959
7/31/2003	9.64	31.68	3.28	59.03	71.92	87.23	104.40	1.713	0.966
8/31/2003	9.61	31.82	3.31	55.61	72.22	88.21	106.13	1.607	0.973
9/30/2003	9.13	28.97	3.17	45.50	72.49	89.08	107.49	1.439	0.977
10/31/2003	8.91	27.32	3.06	33.39	72.77	89.93	108.53	1.117	0.978
11/30/2003	12.16	29.48	2.42	52.30	73.13	90.81	110.10	1.585	0.983
12/31/2003	15.17	29.22	1.93	56.37	73.60	91.72	111.85	1.677	0.990
1/31/2004	14.26	29.25	2.05	57.11	74.05	92.63	113.62	1.711	0.996
2/29/2004	13.86	29.91	2.16	59.72	74.45	93.49	115.35	1.761	1.003
3/31/2004	13.27	31.04	2.34	59.22	74.86	94.45	117.18	1.698	1.009
4/30/2004	12.74	28.52	2.24	56.92	75.24	95.31	118.89	1.767	1.016
5/31/2004	12.08	29.13	2.41	59.35	75.61	96.21	120.73	1.819	1.022
6/30/2004	12.07	30.20	2.50	63.25	75.98	97.12	122.63	1.877	1.030
7/31/2004	11.62	28.96	2.49	61.05	76.34	98.02	124.52	1.889	1.037
8/31/2004	11.19	31.19	2.79	66.25	76.68	98.98	126.58	1.925	1.045
9/30/2004	11.18	31.08	2.78	63.04	77.02	99.92	128.47	1.838	1.051
10/31/2004	10.73	31.08	2.90	66.14	77.35	100.88	130.52	1.935	1.059
11/30/2004	10.48	30.63	2.92	59.53	77.67	101.80	132.30	1.768	1.065
12/31/2004	8.81	32.47	3.69	64.72	77.94	102.81	134.31	1.848	1.072
1/31/2005	10.22	34.08	3.33	64.86	78.26	103.86	136.32	1.751	1.078
2/28/2005	9.66	35.26	3.65	67.80	78.53	104.85	138.22	1.782	1.084
3/31/2005	9.12	35.45	3.89	67.98	78.81	105.95	140.33	1.785	1.090
4/30/2005	8.97	35.36	3.94	68.08	79.08	107.01	142.37	1.794	1.096
5/31/2005	8.47	34.62	4.08	66.52	79.34	108.08	144.43	1.795	1.102
6/30/2005	8.21	34.44	4.19	64.72	79.59	109.11	146.37	1.758	1.108
7/31/2005	8.62	34.31	3.98	64.23	79.86	110.18	148.36	1.745	1.113
8/31/2005	8.47	35.88	4.23	68.70	80.12	111.29	150.49	1.792	1.119
9/30/2005	7.93	35.28	4.45	66.52	80.36	112.35	152.49	1.770	1.125
10/31/2005	7.67	35.20	4.59	66.33	80.59	113.44	154.54	1.773	1.130
11/30/2005	7.77	36.75	4.73	67.82	80.83	114.54	156.58	1.739	1.135
12/31/2005	7.60	36.16	4.76	64.10	81.06	115.66	158.57	1.671	1.140
1/31/2006	7.69	36.65	4.77	59.81	81.30	116.80	160.42	1.539	1.143
2/28/2006	7.24	36.36	5.02	57.93	81.50	117.82	162.04	1.507	1.146
3/31/2006	7.16	37.15	5.18	57.54	81.73	118.97	163.83	1.467	1.149
4/30/2006	7.53	37.99	5.04	68.34	81.95	120.11	165.88	1.701	1.153
5/31/2006	6.99	38.14	5.46	71.32	82.17	121.29	168.09	1.776	1.159
6/30/2006	7.53	40.58	5.39	69.26	82.39	122.51	170.16	1.620	1.163
7/31/2006	7.41	37.05	5.00	63.94	82.62	123.66	172.15	1.631	1.167
8/31/2006	7.42	35.98	4.85	66.48	82.85	124.77	174.21	1.744	1.171
9/30/2006	7.00	35.93	5.13	66.76	83.06	125.85	176.21	1.759	1.176
10/31/2006	6.94	33.46	4.82	52.02	83.28	126.89	177.82	1.467	1.178

Date	Oil Rate (CD) m3/d	Water Rate (CD) m3/d	Water Oil Ratio m3/m3	Water Inj Rate (CD) m3/d	Cum Oil Prod Km3	Cum Water Prod Km3	Cum Water Inj Km3	Voidage Replacement Ratio	Cum Voidage Replacement Ratio
11/30/2006	6.85	37.41	5.46	68.31	83.48	128.01	179.87	1.734	1.182
12/31/2006	6.79	37.33	5.50	68.54	83.70	129.17	182.00	1.744	1.187
1/31/2007	6.63	36.69	5.54	68.73	83.90	130.30	184.13	1.780	1.191
2/28/2007	6.61	35.86	5.43	63.86	84.09	131.31	185.92	1.691	1.195
3/31/2007	6.48	34.53	5.33	62.90	84.29	132.38	187.87	1.728	1.198
4/30/2007	6.35	35.46	5.59	63.49	84.48	133.44	189.77	1.702	1.202
5/31/2007	6.39	36.54	5.72	63.56	84.67	134.58	191.74	1.656	1.205
6/30/2007	5.97	35.67	5.97	62.85	84.85	135.65	193.63	1.681	1.209
7/31/2007	6.06	35.83	5.92	58.62	85.04	136.76	195.44	1.560	1.211
8/31/2007	6.18	34.11	5.52	59.51	85.23	137.81	197.29	1.658	1.214
9/30/2007	6.18	34.48	5.58	51.89	85.42	138.85	198.84	1.431	1.216
10/31/2007	5.91	34.27	5.80	57.65	85.60	139.91	200.63	1.602	1.218
11/30/2007	6.05	34.58	5.71	59.20	85.78	140.95	202.41	1.630	1.221
12/31/2007	5.99	36.00	6.01	58.43	85.97	142.06	204.22	1.548	1.223
1/31/2008	5.80	36.73	6.34	60.93	86.15	143.20	206.11	1.587	1.226
2/29/2008	5.93	36.70	6.19	61.13	86.32	144.27	207.88	1.591	1.228
3/31/2008	5.58	33.45	5.99	56.00	86.49	145.30	209.62	1.597	1.231
4/30/2008	5.28	32.90	6.23	57.07	86.65	146.29	211.33	1.658	1.233
5/31/2008	5.67	35.95	6.34	62.26	86.83	147.40	213.26	1.656	1.236
6/30/2008	5.64	36.65	6.50	62.03	87.00	148.50	215.12	1.620	1.239
7/31/2008	4.54	32.75	7.21	52.45	87.14	149.52	216.75	1.540	1.241
8/31/2008	5.66	38.99	6.88	61.84	87.31	150.73	218.66	1.522	1.243
9/30/2008	5.62	38.24	6.81	61.38	87.48	151.88	220.50	1.540	1.245
10/31/2008	5.55	38.41	6.92	61.71	87.65	153.07	222.42	1.542	1.247
11/30/2008	5.56	38.93	7.00	61.64	87.82	154.23	224.27	1.521	1.248
12/31/2008	4.41	31.43	7.13	55.26	87.96	155.21	225.98	1.690	1.251
1/31/2009	3.77	27.22	7.23	50.55	88.07	156.05	227.55	1.785	1.254
2/28/2009	4.93	38.01	7.71	65.43	88.21	157.12	229.38	1.659	1.256
3/31/2009	5.02	39.20	7.81	66.66	88.37	158.33	231.44	1.640	1.259
4/30/2009	4.80	36.41	7.59	61.58	88.51	159.42	233.29	1.629	1.261
5/31/2009	5.02	39.99	7.96	68.17	88.67	160.66	235.41	1.645	1.264
6/30/2009	4.64	37.67	8.12	64.43	88.81	161.79	237.34	1.651	1.266
7/31/2009	5.04	39.64	7.86	71.40	88.96	163.02	239.55	1.737	1.269
8/31/2009	4.96	40.00	8.07	72.71	89.12	164.26	241.81	1.755	1.272
9/30/2009	4.87	38.81	7.97	70.23	89.26	165.43	243.91	1.746	1.275
10/31/2009	4.75	39.11	8.23	67.38	89.41	166.64	246.00	1.664	1.278
11/30/2009	4.69	39.15	8.34	67.35	89.55	167.81	248.02	1.663	1.280
12/31/2009	4.68	37.88	8.09	64.61	89.70	168.99	250.02	1.647	1.283
1/31/2010	4.57	38.94	8.52	64.74	89.84	170.20	252.03	1.608	1.285
2/28/2010	4.44	38.50	8.68	66.54	89.96	171.27	253.90	1.673	1.287
3/31/2010	4.52	39.20	8.67	66.29	90.10	172.49	255.95	1.636	1.289
4/30/2010	4.45	38.63	8.68	64.95	90.24	173.65	257.90	1.627	1.291
5/31/2010	4.45	39.27	8.83	64.83	90.37	174.87	259.91	1.598	1.293
6/30/2010	4.06	36.65	9.03	59.85	90.49	175.96	261.70	1.583	1.295
7/31/2010	4.43	37.91	8.56	67.65	90.63	177.14	263.80	1.726	1.297
8/31/2010	4.37	38.03	8.70	66.01	90.77	178.32	265.85	1.680	1.300
9/30/2010	4.17	37.49	8.99	67.16	90.89	179.44	267.86	1.736	1.302
10/31/2010	4.09	35.96	8.80	66.00	91.02	180.56	269.91	1.777	1.305

Date	Oil Rate (CD) m3/d	Water Rate (CD) m3/d	Water Oil Ratio m3/m3	Water Inj Rate (CD) m3/d	Cum Oil Prod Km3	Cum Water Prod Km3	Cum Water Inj Km3	Voidage Replacemen t Ratio	Cum Voidage Replacemt Ratio
11/30/2010	4.03	36.16	8.97	66.71	91.14	181.64	271.91	1.787	1.307
12/31/2010	4.03	35.58	8.83	64.20	91.27	182.75	273.90	1.747	1.310

Pattern: 02/10-30-11-26 Set: North Virden Scallion Unit # 2

Oil Formation Vol. Factor : 1.05 m3/m3

Water Formation Vol Factor : 1.00 m3/m3

Water / Oil Ratio : 20.19 m3/m3

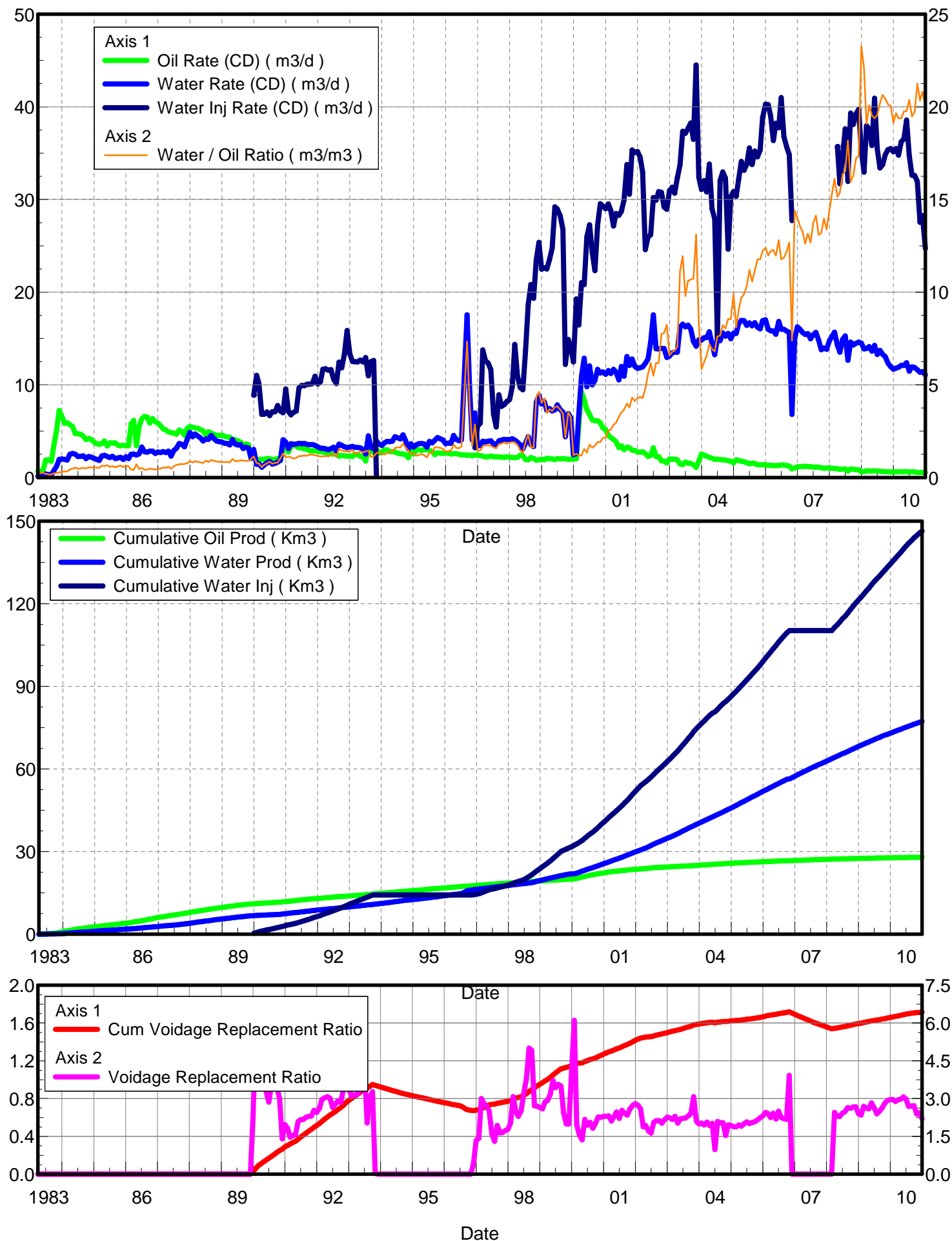
July 25, 2011

Operator: Tundra_Oil_and_Gas_Patnership

Oil Rate (CD) : 0.53 m3/d

Water Rate (CD) : 10.73 m3/d

Water Inj Rate (CD) : 22.09 m3/d



Date	Oil Rate (CD) m3/d	Water Rate (CD) m3/d	Water Oil Ratio m3/m3	Water Inj Rate (CD) m3/d	Cum Oil Prod Km3	Cum Water Prod Km3	Cum Water Inj Km3	Voidage Replacement Ratio	Cum Voidage Replacement Ratio
3/31/1983	0.68	0.14	0.20		0.02	0.00	0.00	0.000	0.000
4/30/1983	0.59	0.14	0.24		0.04	0.01	0.00	0.000	0.000
5/31/1983	0.85	0.21	0.25		0.07	0.02	0.00	0.000	0.000
6/30/1983	1.90	0.36	0.19		0.12	0.03	0.00	0.000	0.000
7/31/1983	1.90	0.31	0.16		0.18	0.04	0.00	0.000	0.000
8/31/1983	1.76	0.29	0.17		0.24	0.04	0.00	0.000	0.000
9/30/1983	3.42	0.73	0.21		0.34	0.07	0.00	0.000	0.000
10/31/1983	5.17	1.24	0.24		0.50	0.10	0.00	0.000	0.000
11/30/1983	7.23	1.96	0.27		0.72	0.16	0.00	0.000	0.000
12/31/1983	6.61	2.00	0.30		0.92	0.23	0.00	0.000	0.000
1/31/1984	5.86	1.95	0.33		1.10	0.29	0.00	0.000	0.000
2/29/1984	5.89	1.88	0.32		1.27	0.34	0.00	0.000	0.000
3/31/1984	5.71	2.52	0.44		1.45	0.42	0.00	0.000	0.000
4/30/1984	5.50	2.60	0.47		1.61	0.50	0.00	0.000	0.000
5/31/1984	4.74	2.51	0.53		1.76	0.57	0.00	0.000	0.000
6/30/1984	4.72	2.26	0.48		1.90	0.64	0.00	0.000	0.000
7/31/1984	4.68	2.30	0.49		2.05	0.71	0.00	0.000	0.000
8/31/1984	4.46	2.33	0.52		2.19	0.79	0.00	0.000	0.000
9/30/1984	4.08	2.04	0.50		2.31	0.85	0.00	0.000	0.000
10/31/1984	4.22	2.27	0.54		2.44	0.92	0.00	0.000	0.000
11/30/1984	4.08	2.20	0.54		2.56	0.98	0.00	0.000	0.000
12/31/1984	3.83	2.07	0.54		2.68	1.05	0.00	0.000	0.000
1/31/1985	3.64	1.95	0.53		2.79	1.11	0.00	0.000	0.000
2/28/1985	3.58	1.84	0.51		2.89	1.16	0.00	0.000	0.000
3/31/1985	3.67	2.33	0.64		3.01	1.23	0.00	0.000	0.000
4/30/1985	3.94	2.40	0.61		3.13	1.30	0.00	0.000	0.000
5/31/1985	3.40	2.27	0.67		3.23	1.37	0.00	0.000	0.000
6/30/1985	3.73	2.15	0.57		3.34	1.44	0.00	0.000	0.000
7/31/1985	3.72	2.28	0.61		3.46	1.51	0.00	0.000	0.000
8/31/1985	3.73	2.04	0.55		3.57	1.57	0.00	0.000	0.000
9/30/1985	3.48	2.12	0.61		3.68	1.64	0.00	0.000	0.000
10/31/1985	3.43	2.19	0.64		3.79	1.70	0.00	0.000	0.000
11/30/1985	3.48	1.96	0.56		3.89	1.76	0.00	0.000	0.000
12/31/1985	3.42	2.24	0.65		4.00	1.83	0.00	0.000	0.000
1/31/1986	3.42	2.05	0.60		4.10	1.90	0.00	0.000	0.000
2/28/1986	5.79	2.50	0.43		4.26	1.97	0.00	0.000	0.000
3/31/1986	6.17	2.53	0.41		4.46	2.04	0.00	0.000	0.000
4/30/1986	3.42	2.42	0.71		4.56	2.12	0.00	0.000	0.000
5/31/1986	5.50	2.56	0.47		4.73	2.20	0.00	0.000	0.000
6/30/1986	6.31	3.29	0.52		4.92	2.29	0.00	0.000	0.000
7/31/1986	6.58	2.77	0.42		5.12	2.38	0.00	0.000	0.000
8/31/1986	6.52	2.72	0.42		5.32	2.46	0.00	0.000	0.000
9/30/1986	5.88	2.84	0.48		5.50	2.55	0.00	0.000	0.000
10/31/1986	6.36	2.85	0.45		5.70	2.64	0.00	0.000	0.000
11/30/1986	6.02	2.60	0.43		5.88	2.72	0.00	0.000	0.000
12/31/1986	5.86	2.76	0.47		6.06	2.80	0.00	0.000	0.000
1/31/1987	5.58	2.69	0.48		6.23	2.88	0.00	0.000	0.000
2/28/1987	5.26	2.81	0.53		6.38	2.96	0.00	0.000	0.000

Date	Oil Rate (CD) m3/d	Water Rate (CD) m3/d	Water Oil Ratio m3/m3	Water Inj Rate (CD) m3/d	Cum Oil Prod Km3	Cum Water Prod Km3	Cum Water Inj Km3	Voidage Replacement Ratio	Cum Voidage Replacement Ratio
3/31/1987	5.14	2.69	0.52		6.54	3.05	0.00	0.000	0.000
4/30/1987	4.91	2.85	0.58		6.69	3.13	0.00	0.000	0.000
5/31/1987	4.85	2.30	0.47		6.84	3.20	0.00	0.000	0.000
6/30/1987	4.78	2.91	0.61		6.98	3.29	0.00	0.000	0.000
7/31/1987	4.67	3.16	0.68		7.13	3.39	0.00	0.000	0.000
8/31/1987	5.11	3.67	0.72		7.28	3.50	0.00	0.000	0.000
9/30/1987	4.95	3.58	0.72		7.43	3.61	0.00	0.000	0.000
10/31/1987	4.55	3.30	0.73		7.57	3.71	0.00	0.000	0.000
11/30/1987	5.31	4.14	0.78		7.73	3.84	0.00	0.000	0.000
12/31/1987	5.50	4.87	0.88		7.90	3.99	0.00	0.000	0.000
1/31/1988	5.40	4.39	0.81		8.07	4.12	0.00	0.000	0.000
2/29/1988	5.36	4.68	0.87		8.23	4.26	0.00	0.000	0.000
3/31/1988	5.33	4.48	0.84		8.39	4.40	0.00	0.000	0.000
4/30/1988	5.16	4.26	0.83		8.55	4.53	0.00	0.000	0.000
5/31/1988	5.05	3.95	0.78		8.70	4.65	0.00	0.000	0.000
6/30/1988	4.59	4.15	0.90		8.84	4.77	0.00	0.000	0.000
7/31/1988	4.94	4.12	0.83		8.99	4.90	0.00	0.000	0.000
8/31/1988	4.81	4.55	0.95		9.14	5.04	0.00	0.000	0.000
9/30/1988	4.66	4.20	0.90		9.28	5.17	0.00	0.000	0.000
10/31/1988	4.55	3.94	0.87		9.42	5.29	0.00	0.000	0.000
11/30/1988	4.54	3.86	0.85		9.56	5.41	0.00	0.000	0.000
12/31/1988	4.56	3.81	0.84		9.70	5.52	0.00	0.000	0.000
1/31/1989	4.45	3.68	0.83		9.84	5.64	0.00	0.000	0.000
2/28/1989	4.36	3.66	0.84		9.96	5.74	0.00	0.000	0.000
3/31/1989	4.33	3.50	0.81		10.10	5.85	0.00	0.000	0.000
4/30/1989	4.10	4.09	1.00		10.22	5.97	0.00	0.000	0.000
5/31/1989	4.07	3.60	0.88		10.34	6.08	0.00	0.000	0.000
6/30/1989	3.96	3.51	0.89		10.46	6.19	0.00	0.000	0.000
7/31/1989	3.82	3.52	0.92		10.58	6.30	0.00	0.000	0.000
8/31/1989	3.42	3.13	0.91		10.69	6.39	0.00	0.000	0.000
9/30/1989	3.63	3.26	0.90		10.80	6.49	0.00	0.000	0.000
10/31/1989	3.53	3.18	0.90		10.91	6.59	0.00	0.000	0.000
11/30/1989	2.08	2.06	0.99		10.97	6.65	0.00	0.000	0.000
12/31/1989	2.67	3.02	1.13	8.88	11.05	6.75	0.28	2.340	0.028
1/31/1990	1.80	1.41	0.78	11.02	11.11	6.79	0.62	5.704	0.062
2/28/1990	1.96	1.48	0.76	10.14	11.16	6.83	0.90	4.966	0.090
3/31/1990	1.95	1.10	0.56	6.81	11.22	6.87	1.11	4.092	0.110
4/30/1990	1.98	1.36	0.69	6.83	11.28	6.91	1.32	3.533	0.129
5/31/1990	2.03	1.56	0.77	7.07	11.35	6.95	1.54	3.286	0.150
6/30/1990	2.04	1.74	0.85	6.67	11.41	7.01	1.74	2.867	0.168
7/31/1990	1.92	1.43	0.75	7.10	11.47	7.05	1.96	3.569	0.189
8/31/1990	1.93	1.52	0.79	7.07	11.53	7.10	2.18	3.404	0.209
9/30/1990	2.05	1.66	0.81	7.77	11.59	7.15	2.41	3.460	0.229
10/31/1990	1.80	1.87	1.04	7.17	11.64	7.21	2.63	3.003	0.249
11/30/1990	3.15	4.06	1.29	6.98	11.74	7.33	2.84	1.403	0.265
12/31/1990	3.51	3.83	1.09	9.56	11.85	7.45	3.14	1.972	0.288
1/31/1991	2.76	3.10	1.13	7.11	11.93	7.54	3.36	1.822	0.305
2/28/1991	3.35	3.64	1.09	6.77	12.03	7.64	3.55	1.470	0.319

Date	Oil Rate (CD) m3/d	Water Rate (CD) m3/d	Water Oil Ratio m3/m3	Water Inj Rate (CD) m3/d	Cum Oil Prod Km3	Cum Water Prod Km3	Cum Water Inj Km3	Voidage Replacement Ratio	Cum Voidage Replacement Ratio
3/31/1991	3.50	3.57	1.02	7.04	12.13	7.76	3.76	1.534	0.334
4/30/1991	3.38	3.60	1.06	7.17	12.24	7.86	3.98	1.568	0.349
5/31/1991	3.20	3.68	1.15	9.66	12.33	7.98	4.28	2.097	0.371
6/30/1991	3.18	3.65	1.15	9.92	12.43	8.09	4.58	2.169	0.392
7/31/1991	3.09	3.66	1.18	9.91	12.53	8.20	4.88	2.175	0.413
8/31/1991	3.06	3.58	1.17	10.07	12.62	8.31	5.20	2.257	0.434
9/30/1991	2.88	3.54	1.23	10.07	12.71	8.42	5.50	2.300	0.455
10/31/1991	2.88	3.56	1.24	10.13	12.80	8.53	5.81	2.307	0.475
11/30/1991	2.89	3.47	1.20	10.93	12.88	8.63	6.14	2.537	0.497
12/31/1991	2.83	3.30	1.17	10.09	12.97	8.73	6.45	2.450	0.517
1/31/1992	2.79	3.15	1.13	10.33	13.06	8.83	6.77	2.611	0.537
2/29/1992	2.75	3.15	1.14	11.69	13.14	8.92	7.11	2.961	0.559
3/31/1992	2.68	3.10	1.15	11.73	13.22	9.02	7.48	3.030	0.582
4/30/1992	2.62	3.01	1.15	11.59	13.30	9.11	7.82	3.078	0.604
5/31/1992	2.56	3.11	1.22	11.64	13.38	9.21	8.18	3.023	0.626
6/30/1992	2.53	3.27	1.29	10.60	13.45	9.30	8.50	2.649	0.644
7/31/1992	2.60	2.88	1.11	10.14	13.53	9.39	8.82	2.789	0.663
8/31/1992	2.32	3.60	1.56	12.46	13.61	9.51	9.20	2.914	0.685
9/30/1992	2.38	3.46	1.46	11.81	13.68	9.61	9.56	2.848	0.705
10/31/1992	2.32	3.30	1.42	13.30	13.75	9.71	9.97	3.349	0.728
11/30/1992	2.31	3.22	1.40	15.86	13.82	9.81	10.45	4.078	0.757
12/31/1992	2.31	3.28	1.42	13.37	13.89	9.91	10.86	3.388	0.780
1/31/1993	2.25	3.37	1.49	12.51	13.96	10.01	11.25	3.114	0.800
2/28/1993	2.51	3.24	1.29	12.48	14.03	10.11	11.60	3.148	0.819
3/31/1993	2.46	3.25	1.32	12.48	14.11	10.21	11.98	3.149	0.839
4/30/1993	2.28	3.19	1.40	12.66	14.18	10.30	12.36	3.287	0.859
5/31/1993	2.22	3.01	1.36	12.47	14.24	10.39	12.75	3.416	0.878
6/30/1993	1.77	2.52	1.42	12.93	14.30	10.47	13.14	4.265	0.900
7/31/1993	3.13	4.49	1.43	10.99	14.39	10.61	13.48	2.035	0.912
8/31/1993	2.93	3.24	1.11	12.52	14.48	10.71	13.87	3.061	0.931
9/30/1993	2.68	3.09	1.15	12.63	14.57	10.80	14.25	3.269	0.949
10/31/1993	3.02	3.97	1.31	0.16	14.66	10.93	14.25	0.033	0.940
11/30/1993	2.64	3.60	1.37		14.74	11.03	14.25	0.000	0.932
12/31/1993	2.72	3.48	1.28		14.82	11.14	14.25	0.000	0.924
1/31/1994	3.01	3.74	1.24		14.92	11.26	14.25	0.000	0.915
2/28/1994	2.97	3.89	1.31		15.00	11.37	14.25	0.000	0.907
3/31/1994	2.79	3.88	1.39		15.09	11.49	14.25	0.000	0.899
4/30/1994	2.78	3.90	1.40		15.17	11.60	14.25	0.000	0.891
5/31/1994	2.76	4.40	1.59		15.25	11.74	14.25	0.000	0.882
6/30/1994	2.63	4.29	1.63		15.33	11.87	14.25	0.000	0.874
7/31/1994	2.56	4.16	1.62		15.41	12.00	14.25	0.000	0.866
8/31/1994	2.53	4.59	1.82		15.49	12.14	14.25	0.000	0.857
9/30/1994	2.47	4.00	1.62		15.57	12.26	14.25	0.000	0.850
10/31/1994	2.12	3.08	1.45		15.63	12.36	14.25	0.000	0.844
11/30/1994	2.88	3.65	1.27		15.72	12.47	14.25	0.000	0.838
12/31/1994	2.54	3.30	1.30		15.80	12.57	14.25	0.000	0.832
1/31/1995	3.00	3.53	1.18		15.89	12.68	14.25	0.000	0.825
2/28/1995	2.99	3.65	1.22		15.97	12.78	14.25	0.000	0.819

Date	Oil Rate (CD) m3/d	Water Rate (CD) m3/d	Water Oil Ratio m3/m3	Water Inj Rate (CD) m3/d	Cum Oil Prod Km3	Cum Water Prod Km3	Cum Water Inj Km3	Voidage Replacement Ratio	Cum Voidage Replacement Ratio
3/31/1995	2.93	3.66	1.25		16.06	12.89	14.25	0.000	0.813
4/30/1995	2.99	3.63	1.21		16.15	13.00	14.25	0.000	0.806
5/31/1995	3.01	3.28	1.09		16.25	13.10	14.25	0.000	0.801
6/30/1995	2.92	3.89	1.33		16.33	13.22	14.25	0.000	0.794
7/31/1995	2.80	3.72	1.33		16.42	13.34	14.25	0.000	0.788
8/31/1995	2.45	4.03	1.64		16.50	13.46	14.25	0.000	0.782
9/30/1995	2.66	4.32	1.62		16.58	13.59	14.25	0.000	0.775
10/31/1995	2.62	4.19	1.60		16.66	13.72	14.25	0.000	0.769
11/30/1995	2.60	4.04	1.55		16.74	13.84	14.25	0.000	0.763
12/31/1995	2.63	3.64	1.39		16.82	13.95	14.25	0.000	0.757
1/31/1996	2.61	3.71	1.42		16.90	14.07	14.25	0.000	0.752
2/29/1996	2.53	3.69	1.46		16.97	14.18	14.25	0.000	0.747
3/31/1996	2.57	4.54	1.76		17.05	14.32	14.25	0.000	0.740
4/30/1996	2.58	4.12	1.60		17.13	14.44	14.25	0.000	0.735
5/31/1996	2.50	3.96	1.58		17.21	14.56	14.25	0.000	0.729
6/30/1996	2.44	4.07	1.67		17.28	14.69	14.25	0.000	0.724
7/31/1996	2.44	10.73	4.40		17.36	15.02	14.25	0.000	0.711
8/31/1996	2.40	17.55	7.32		17.43	15.56	14.25	0.000	0.692
9/30/1996	2.42	9.79	4.04		17.50	15.86	14.25	0.000	0.681
10/31/1996	2.34	4.04	1.73		17.58	15.98	14.25	0.000	0.677
11/30/1996	2.43	6.97	2.86	3.21	17.65	16.19	14.35	0.419	0.674
12/31/1996	2.39	3.42	1.43	5.53	17.72	16.30	14.52	1.346	0.678
1/31/1997	2.35	3.44	1.46	5.84	17.80	16.40	14.70	1.419	0.682
2/28/1997	2.32	3.92	1.69	13.77	17.86	16.51	15.09	2.999	0.696
3/31/1997	2.21	3.84	1.74	12.60	17.93	16.63	15.48	2.810	0.709
4/30/1997	2.25	3.92	1.75	12.33	18.00	16.75	15.85	2.696	0.722
5/31/1997	2.32	3.96	1.71	11.65	18.07	16.87	16.21	2.515	0.733
6/30/1997	2.23	3.63	1.62	6.85	18.13	16.98	16.41	1.602	0.738
7/31/1997	2.24	3.53	1.57	5.45	18.20	17.09	16.58	1.306	0.742
8/31/1997	2.22	3.96	1.79	8.93	18.27	17.21	16.86	1.940	0.749
9/30/1997	2.20	4.04	1.84	7.68	18.34	17.33	17.09	1.643	0.755
10/31/1997	2.18	4.11	1.89	7.87	18.41	17.46	17.33	1.659	0.761
11/30/1997	2.24	4.08	1.82	8.21	18.47	17.58	17.58	1.735	0.767
12/31/1997	2.18	4.10	1.88	8.41	18.54	17.71	17.84	1.780	0.773
1/31/1998	2.18	4.18	1.91	9.82	18.61	17.84	18.14	2.042	0.781
2/28/1998	2.14	4.05	1.89	14.37	18.67	17.95	18.55	3.079	0.794
3/31/1998	2.17	3.80	1.75	10.96	18.74	18.07	18.89	2.479	0.804
4/30/1998	2.40	3.53	1.47	9.70	18.81	18.18	19.18	2.297	0.812
5/31/1998	2.35	3.07	1.31	9.47	18.88	18.27	19.47	2.521	0.820
6/30/1998	1.93	3.72	1.93	13.66	18.94	18.38	19.88	3.192	0.833
7/31/1998	1.90	4.40	2.31	18.65	19.00	18.52	20.46	3.770	0.852
8/31/1998	2.15	3.54	1.64	20.83	19.06	18.63	21.11	5.005	0.874
9/30/1998	2.07	3.33	1.61	19.33	19.13	18.73	21.69	4.925	0.894
10/31/1998	1.87	8.11	4.33	23.50	19.18	18.98	22.41	2.717	0.914
11/30/1998	1.91	8.85	4.62	25.38	19.24	19.25	23.18	2.700	0.934
12/31/1998	1.96	7.92	4.03	22.47	19.30	19.49	23.87	2.648	0.952
1/31/1999	1.92	8.18	4.27	22.63	19.36	19.75	24.57	2.592	0.970
2/28/1999	2.08	7.24	3.48	22.50	19.42	19.95	25.20	2.867	0.986

Date	Oil Rate (CD) m3/d	Water Rate (CD) m3/d	Water Oil Ratio m3/m3	Water Inj Rate (CD) m3/d	Cum Oil Prod Km3	Cum Water Prod Km3	Cum Water Inj Km3	Voidage Replacement Ratio	Cum Voidage Replacement Ratio
3/31/1999	2.03	7.44	3.67	23.49	19.48	20.18	25.93	2.925	1.005
4/30/1999	2.00	7.19	3.60	24.74	19.54	20.40	26.67	3.186	1.024
5/31/1999	1.92	7.30	3.80	29.22	19.60	20.62	27.58	3.720	1.049
6/30/1999	2.04	7.83	3.84	28.96	19.66	20.86	28.45	3.440	1.072
7/31/1999	2.00	7.32	3.66	28.22	19.73	21.08	29.32	3.570	1.095
8/31/1999	2.05	7.07	3.45	26.78	19.79	21.30	30.15	3.496	1.116
9/30/1999	2.03	4.40	2.17	12.19	19.85	21.43	30.52	2.447	1.123
10/31/1999	1.96	6.89	3.52	14.90	19.91	21.65	30.98	1.997	1.130
11/30/1999	1.99	6.46	3.25	14.04	19.97	21.84	31.40	1.997	1.137
12/31/1999	2.04	2.47	1.21	12.48	20.03	21.92	31.79	4.075	1.147
1/31/2000	2.02	2.57	1.27	19.26	20.10	22.00	32.39	6.106	1.165
2/29/2000	5.70	6.85	1.20	16.46	20.26	22.20	32.86	1.937	1.171
3/31/2000	9.19	10.92	1.19	21.03	20.55	22.54	33.51	1.548	1.177
4/30/2000	8.41	12.86	1.53	20.81	20.80	22.92	34.14	1.360	1.180
5/31/2000	7.31	9.80	1.34	25.95	21.03	23.22	34.94	2.178	1.192
6/30/2000	6.82	12.05	1.77	27.26	21.23	23.59	35.76	1.945	1.203
7/31/2000	6.21	9.99	1.61	24.28	21.42	23.90	36.51	2.059	1.213
8/31/2000	6.12	10.49	1.71	22.33	21.61	24.22	37.21	1.821	1.221
9/30/2000	6.11	11.67	1.91	27.21	21.80	24.57	38.02	2.025	1.231
10/31/2000	5.91	11.27	1.91	29.55	21.98	24.92	38.94	2.277	1.245
11/30/2000	5.37	11.41	2.13	29.30	22.14	25.26	39.82	2.261	1.257
12/31/2000	5.15	11.12	2.16	29.00	22.30	25.61	40.72	2.299	1.270
1/31/2001	4.56	11.53	2.53	29.52	22.44	25.96	41.63	2.298	1.283
2/28/2001	4.32	11.22	2.60	28.81	22.56	26.28	42.44	2.310	1.294
3/31/2001	4.11	11.67	2.84	27.13	22.69	26.64	43.28	2.109	1.303
4/30/2001	3.87	11.38	2.94	28.49	22.81	26.98	44.13	2.279	1.314
5/31/2001	3.22	10.52	3.27	28.28	22.91	27.31	45.01	2.469	1.326
6/30/2001	3.41	11.97	3.51	28.72	23.01	27.67	45.87	2.216	1.337
7/31/2001	2.99	10.94	3.66	29.95	23.10	28.01	46.80	2.536	1.349
8/31/2001	3.28	13.05	3.98	33.77	23.20	28.41	47.85	2.413	1.362
9/30/2001	3.19	12.08	3.78	30.57	23.30	28.77	48.76	2.350	1.373
10/31/2001	2.97	12.78	4.31	35.34	23.39	29.17	49.86	2.592	1.388
11/30/2001	2.91	12.01	4.13	35.08	23.48	29.53	50.91	2.729	1.402
12/31/2001	2.76	11.79	4.28	35.18	23.56	29.90	52.00	2.796	1.417
1/31/2002	2.73	11.85	4.35	34.56	23.65	30.26	53.07	2.734	1.430
2/28/2002	2.78	11.93	4.28	32.96	23.73	30.60	54.00	2.589	1.442
3/31/2002	2.58	12.32	4.78	24.59	23.81	30.98	54.76	1.881	1.446
4/30/2002	2.30	12.79	5.57	25.94	23.87	31.36	55.54	1.928	1.451
5/31/2002	2.37	14.63	6.18	26.21	23.95	31.82	56.35	1.711	1.454
6/30/2002	3.19	17.54	5.50	30.21	24.04	32.34	57.26	1.636	1.457
7/31/2002	2.25	13.89	6.16	29.92	24.11	32.77	58.18	2.057	1.464
8/31/2002	2.24	13.88	6.19	30.85	24.18	33.20	59.14	2.123	1.471
9/30/2002	1.80	13.95	7.74	30.77	24.24	33.62	60.06	2.127	1.478
10/31/2002	1.78	13.91	7.80	29.19	24.29	34.05	60.97	2.023	1.484
11/30/2002	1.58	12.96	8.23	28.93	24.34	34.44	61.84	2.156	1.491
12/31/2002	1.99	13.09	6.59	30.94	24.40	34.85	62.80	2.264	1.499
1/31/2003	1.98	13.46	6.79	31.32	24.46	35.27	63.77	2.232	1.506
2/28/2003	1.97	13.51	6.85	30.68	24.52	35.64	64.63	2.178	1.512

Date	Oil Rate (CD) m3/d	Water Rate (CD) m3/d	Water Oil Ratio m3/m3	Water Inj Rate (CD) m3/d	Cum Oil Prod Km3	Cum Water Prod Km3	Cum Water Inj Km3	Voidage Replacement Ratio	Cum Voidage Replacement Ratio
3/31/2003	1.91	13.52	7.06	32.32	24.58	36.06	65.63	2.296	1.520
4/30/2003	1.46	16.23	11.13	33.73	24.62	36.55	66.64	2.026	1.526
5/31/2003	1.39	16.55	11.94	37.35	24.66	37.06	67.80	2.203	1.534
6/30/2003	1.66	16.25	9.80	37.13	24.71	37.55	68.91	2.219	1.542
7/31/2003	1.55	16.44	10.62	37.68	24.76	38.06	70.08	2.231	1.550
8/31/2003	1.50	16.02	10.68	38.26	24.81	38.56	71.27	2.325	1.558
9/30/2003	1.37	14.70	10.73	36.50	24.85	39.00	72.36	2.417	1.567
10/31/2003	1.08	14.16	13.10	44.52	24.88	39.44	73.74	3.076	1.581
11/30/2003	1.78	14.85	8.35	32.40	24.94	39.88	74.71	2.108	1.586
12/31/2003	2.54	14.83	5.85	31.08	25.01	40.34	75.68	1.997	1.591
1/31/2004	2.42	15.09	6.24	32.04	25.09	40.81	76.67	2.029	1.595
2/29/2004	2.30	15.10	6.57	30.80	25.16	41.25	77.56	1.954	1.598
3/31/2004	2.18	15.72	7.20	33.82	25.22	41.73	78.61	2.069	1.603
4/30/2004	2.08	14.43	6.93	28.99	25.29	42.17	79.48	1.928	1.606
5/31/2004	1.94	13.25	6.82	27.92	25.35	42.58	80.35	2.022	1.610
6/30/2004	1.97	15.01	7.61	15.18	25.41	43.03	80.80	0.974	1.604
7/31/2004	1.92	14.76	7.67	32.03	25.47	43.49	81.79	2.092	1.608
8/31/2004	1.90	15.62	8.21	32.97	25.52	43.97	82.82	2.040	1.613
9/30/2004	1.90	15.25	8.05	32.30	25.58	44.43	83.78	2.045	1.617
10/31/2004	1.82	15.55	8.55	24.63	25.64	44.91	84.55	1.532	1.616
11/30/2004	1.75	14.98	8.56	30.32	25.69	45.36	85.46	1.959	1.619
12/31/2004	1.57	15.56	9.90	30.86	25.74	45.84	86.41	1.927	1.622
1/31/2005	1.92	15.55	8.11	30.34	25.80	46.32	87.36	1.884	1.624
2/28/2005	1.84	16.61	9.03	32.19	25.85	46.79	88.26	1.878	1.626
3/31/2005	1.74	16.95	9.72	34.10	25.90	47.31	89.31	1.953	1.630
4/30/2005	1.71	16.93	9.89	33.15	25.96	47.82	90.31	1.903	1.632
5/31/2005	1.59	16.42	10.31	33.80	26.00	48.33	91.36	2.002	1.636
6/30/2005	1.49	16.69	11.19	35.56	26.05	48.83	92.42	2.077	1.640
7/31/2005	1.55	16.37	10.59	33.78	26.10	49.34	93.47	2.009	1.643
8/31/2005	1.50	16.70	11.15	35.22	26.14	49.86	94.56	2.055	1.647
9/30/2005	1.38	16.21	11.76	34.60	26.19	50.34	95.60	2.083	1.651
10/31/2005	1.36	16.04	11.77	35.34	26.23	50.84	96.69	2.150	1.655
11/30/2005	1.38	16.92	12.23	38.85	26.27	51.35	97.86	2.243	1.660
12/31/2005	1.37	17.01	12.40	40.29	26.31	51.88	99.11	2.315	1.666
1/31/2006	1.34	15.99	11.98	40.23	26.35	52.37	100.36	2.456	1.673
2/28/2006	1.30	15.83	12.22	38.99	26.39	52.81	101.45	2.406	1.678
3/31/2006	1.29	15.81	12.28	36.36	26.43	53.30	102.58	2.247	1.683
4/30/2006	1.29	15.45	11.97	38.24	26.47	53.77	103.72	2.417	1.689
5/31/2006	1.32	16.83	12.79	37.74	26.51	54.29	104.89	2.192	1.693
6/30/2006	1.36	15.98	11.77	41.00	26.55	54.77	106.12	2.504	1.699
7/31/2006	1.35	15.98	11.85	36.77	26.59	55.26	107.26	2.246	1.704
8/31/2006	1.29	15.78	12.23	35.63	26.63	55.75	108.37	2.205	1.708
9/30/2006	1.24	15.67	12.68	34.85	26.67	56.22	109.41	2.175	1.711
10/31/2006	0.92	6.81	7.40	27.71	26.70	56.43	110.27	3.918	1.719
11/30/2006	1.04	14.95	14.41		26.73	56.88	110.27	0.000	1.707
12/31/2006	1.16	16.26	14.01		26.76	57.39	110.27	0.000	1.693
1/31/2007	1.18	16.00	13.56		26.80	57.88	110.27	0.000	1.680
2/28/2007	1.18	15.66	13.28		26.83	58.32	110.27	0.000	1.669

Date	Oil Rate (CD) m3/d	Water Rate (CD) m3/d	Water Oil Ratio m3/m3	Water Inj Rate (CD) m3/d	Cum Oil Prod Km3	Cum Water Prod Km3	Cum Water Inj Km3	Voidage Replacement Ratio	Cum Voidage Replacement Ratio
3/31/2007	1.22	15.42	12.62		26.87	58.80	110.27	0.000	1.656
4/30/2007	1.18	15.52	13.15		26.91	59.27	110.27	0.000	1.645
5/31/2007	1.18	14.97	12.67		26.94	59.73	110.27	0.000	1.633
6/30/2007	1.12	15.41	13.74		26.98	60.19	110.27	0.000	1.622
7/31/2007	1.11	15.65	14.12		27.01	60.68	110.27	0.000	1.610
8/31/2007	1.13	14.84	13.10		27.05	61.14	110.27	0.000	1.599
9/30/2007	1.05	13.79	13.19		27.08	61.55	110.27	0.000	1.589
10/31/2007	1.00	13.97	13.97		27.11	61.98	110.27	0.000	1.579
11/30/2007	1.03	13.83	13.39		27.14	62.40	110.27	0.000	1.570
12/31/2007	1.02	14.75	14.39		27.17	62.86	110.27	0.000	1.559
1/31/2008	0.99	15.24	15.33		27.20	63.33	110.27	0.000	1.549
2/29/2008	0.97	15.69	16.11		27.23	63.78	110.27	0.000	1.539
3/31/2008	0.94	14.29	15.15	35.71	27.26	64.23	111.38	2.452	1.545
4/30/2008	0.88	13.51	15.37	31.70	27.29	64.63	112.33	2.302	1.549
5/31/2008	0.91	14.90	16.36	34.74	27.31	65.09	113.41	2.291	1.554
6/30/2008	0.92	15.29	16.54	37.63	27.34	65.55	114.54	2.419	1.559
7/31/2008	0.70	12.64	18.17	31.94	27.36	65.94	115.53	2.487	1.564
8/31/2008	0.92	14.62	15.95	39.33	27.39	66.40	116.75	2.642	1.571
9/30/2008	0.88	14.30	16.29	38.10	27.42	66.83	117.89	2.618	1.577
10/31/2008	0.84	14.48	17.21	39.25	27.44	67.28	119.10	2.666	1.584
11/30/2008	0.84	14.61	17.37	39.72	27.47	67.71	120.30	2.674	1.590
12/31/2008	0.62	14.49	23.27	35.23	27.49	68.16	121.39	2.402	1.595
1/31/2009	0.63	13.88	22.06	32.95	27.51	68.59	122.41	2.343	1.599
2/28/2009	0.73	13.91	19.08	37.97	27.53	68.98	123.47	2.688	1.605
3/31/2009	0.70	14.11	20.08	37.58	27.55	69.42	124.64	2.626	1.611
4/30/2009	0.70	13.64	19.54	35.83	27.57	69.83	125.71	2.589	1.616
5/31/2009	0.74	14.26	19.38	40.94	27.59	70.27	126.98	2.828	1.623
6/30/2009	0.68	13.27	19.56	35.47	27.62	70.67	128.05	2.634	1.628
7/31/2009	0.68	13.72	20.20	33.39	27.64	71.09	129.08	2.400	1.632
8/31/2009	0.64	13.30	20.64	33.74	27.66	71.51	130.13	2.501	1.637
9/30/2009	0.64	13.03	20.43	34.83	27.68	71.90	131.17	2.635	1.642
10/31/2009	0.61	12.34	20.14	35.39	27.69	72.28	132.27	2.826	1.647
11/30/2009	0.60	11.95	20.06	35.50	27.71	72.64	133.33	2.929	1.653
12/31/2009	0.61	11.68	19.14	35.16	27.73	73.00	134.42	2.965	1.659
1/31/2010	0.60	11.80	19.65	35.48	27.75	73.37	135.52	2.963	1.665
2/28/2010	0.61	11.89	19.38	34.79	27.77	73.70	136.50	2.884	1.670
3/31/2010	0.62	12.09	19.39	36.23	27.79	74.07	137.62	2.952	1.676
4/30/2010	0.61	12.10	19.75	36.53	27.80	74.44	138.72	2.975	1.682
5/31/2010	0.63	12.38	19.78	38.56	27.82	74.82	139.91	3.071	1.688
6/30/2010	0.56	11.46	20.36	34.72	27.84	75.16	140.95	2.988	1.694
7/31/2010	0.61	11.95	19.48	32.63	27.86	75.54	141.97	2.691	1.698
8/31/2010	0.60	11.87	19.72	32.59	27.88	75.90	142.98	2.706	1.703
9/30/2010	0.55	11.61	21.25	31.95	27.89	76.25	143.93	2.714	1.707
10/31/2010	0.56	11.36	20.35	27.54	27.91	76.60	144.79	2.390	1.710
11/30/2010	0.55	11.41	20.80	28.24	27.93	76.95	145.64	2.440	1.713
12/31/2010	0.55	11.07	20.00	24.70	27.95	77.29	146.40	2.198	1.715