


# Manitoba



Energy and Mines  
Petroleum  
494

555-330 Graham Avenue  
Winnipeg, Manitoba, CANADA  
R3C 4E3

Exploration Permit No. 585

<p>Manitoba Energy and Mines</p> <p>Petroleum 555-330 Graham Avenue Winnipeg, Manitoba R3C 4E3</p> 	<p>494</p> <p>SLIDES FROM :</p> <p>WHITEBEAR CREEK STH #1</p>
---	---

MG-0815





• MAY • 70





• MAY • 70



• MAY • 70



WHITE BEAR DRILLSITE  
AFTER CLEANUP  
AUGUST 1970





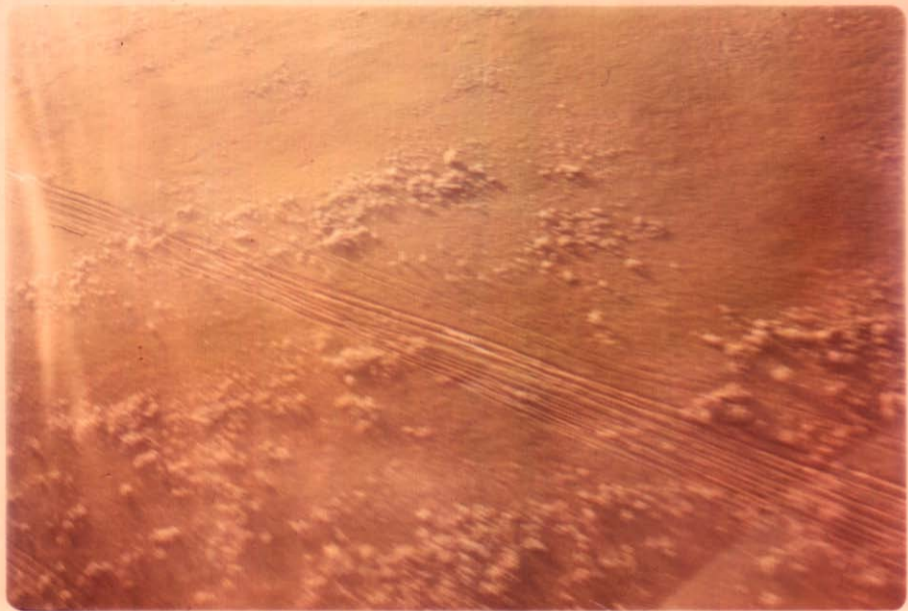
WHITEBEAR DRILLSITE  
AFTER CLEANUP  
AUGUST 1970



• MAY • 70



WHITE BEAR ACCESS ROAD  
AFTER MOVE OUT  
AUGUST 1970  
(PHOTO REVERSED)



Manana

WHITE BEAR ACCESS ROAD  
AFTER MOVE OUT  
AUGUST 1970





• MAY • 70



Slides of White Bear Creek STH #1

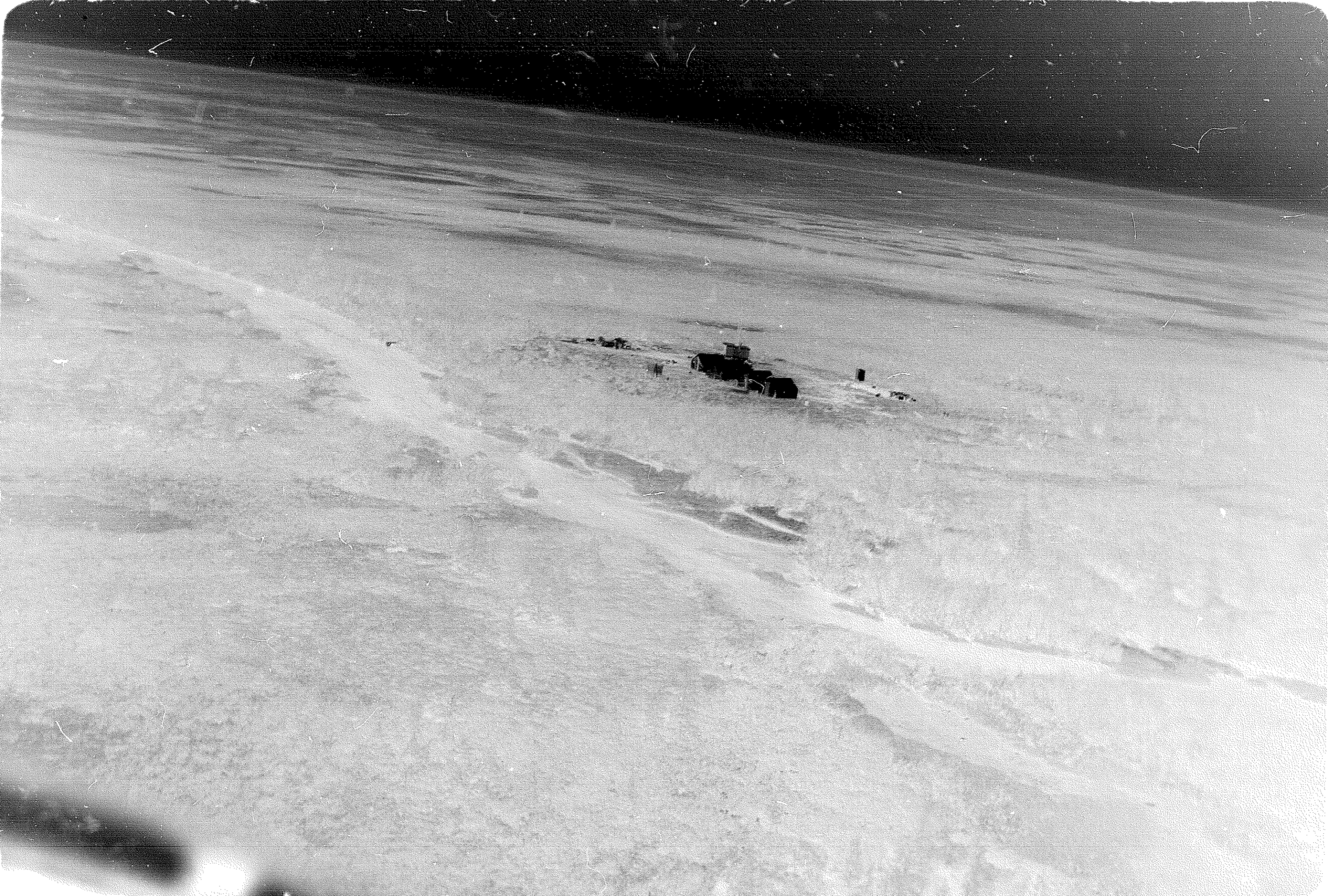
DEPARTMENT OF MINES  
& NATURAL RESOURCES

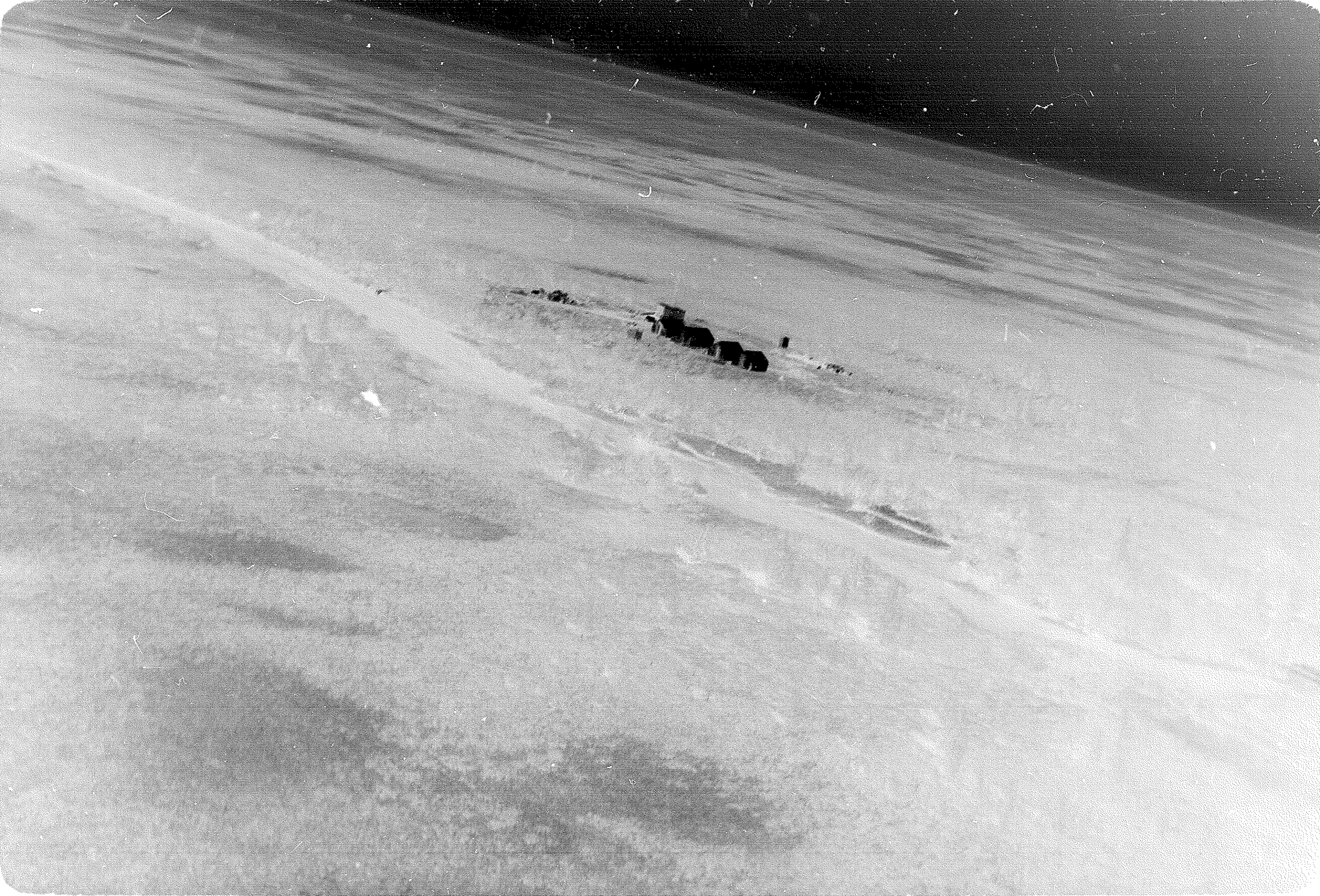
AUG 4 1970

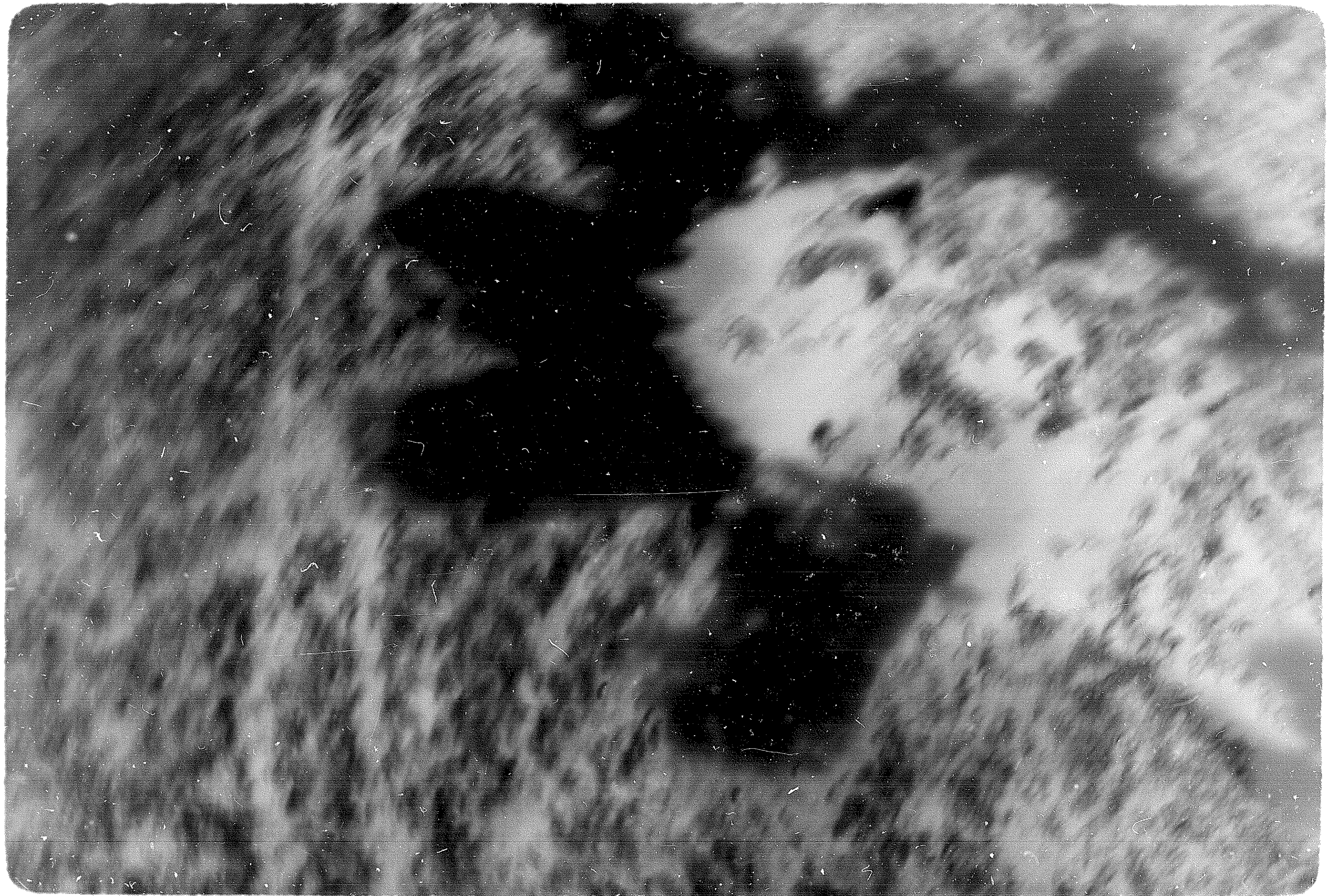
PETROLEUM ENGINEERING  
DIVISION

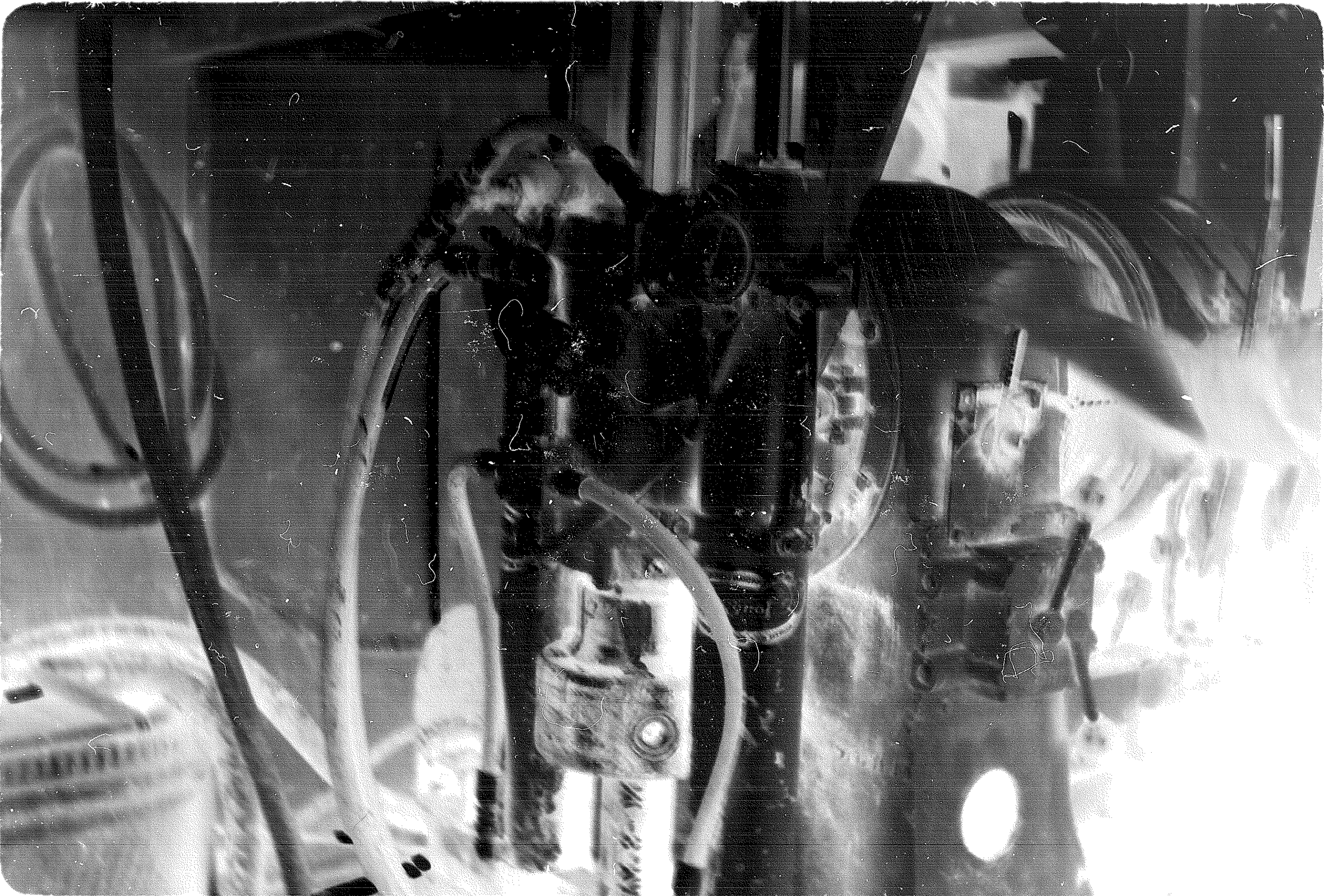
Slide No.

- 2 -Aerial view of camp at White Bear Creek looking NE.
- 3 -Same
- 4 -Same looking almost due east. Hudson's Bay in far background.
- 5 -Same
- 6 -Same
- 7 -Same
- 8 -View of drilling rig showing chuck which holds drill pipe. Suction tank in background at right. Discharge goes on ground.
- 9 -Rig in operation. Drill pipe and chuck is rotating 400 + RPM.
- 10 -View of rig taken from south side.
- 11 -Same view of rig.
- 12 -View of camp showing condition of ground, the 4 wheel drive "Coot" vehicle. The first tent is for the geologist, the second is the cookshack, the third is the foreman's and his helper, the fourth is for the other crewmen. The poles are for the radio antenna.
- 13 -View taken from SE of lease. Mud, cement, etc. are under tarps.
- 14 -Same
- 15 -Shot of lease from same spot as 13 and 14.
- 16 -Shot of camp from same spot.
- 17 -Shot of rig while making a "trip".
- 18 -Shot of Rattigan BOP. The rubber rams are shown on floor (one to right of flow tee 3 holding up valve and nipples on left side). From the bottom there is nipple, flow tee, nipple, full opening valve, the Rattigan BOP, the large "butterfly" or swing check valve and a nipple. Casing was set so the floor level of the rig would be immediately above the Rattigan BOP as shown in slide #19.
- 20 -View of garbage disposal area looking west.
- 21 -View of garbage disposal area looking down from elevation of 500'. The cream coloured spots are where cat has scraped for dirt to cover over burned garbage.

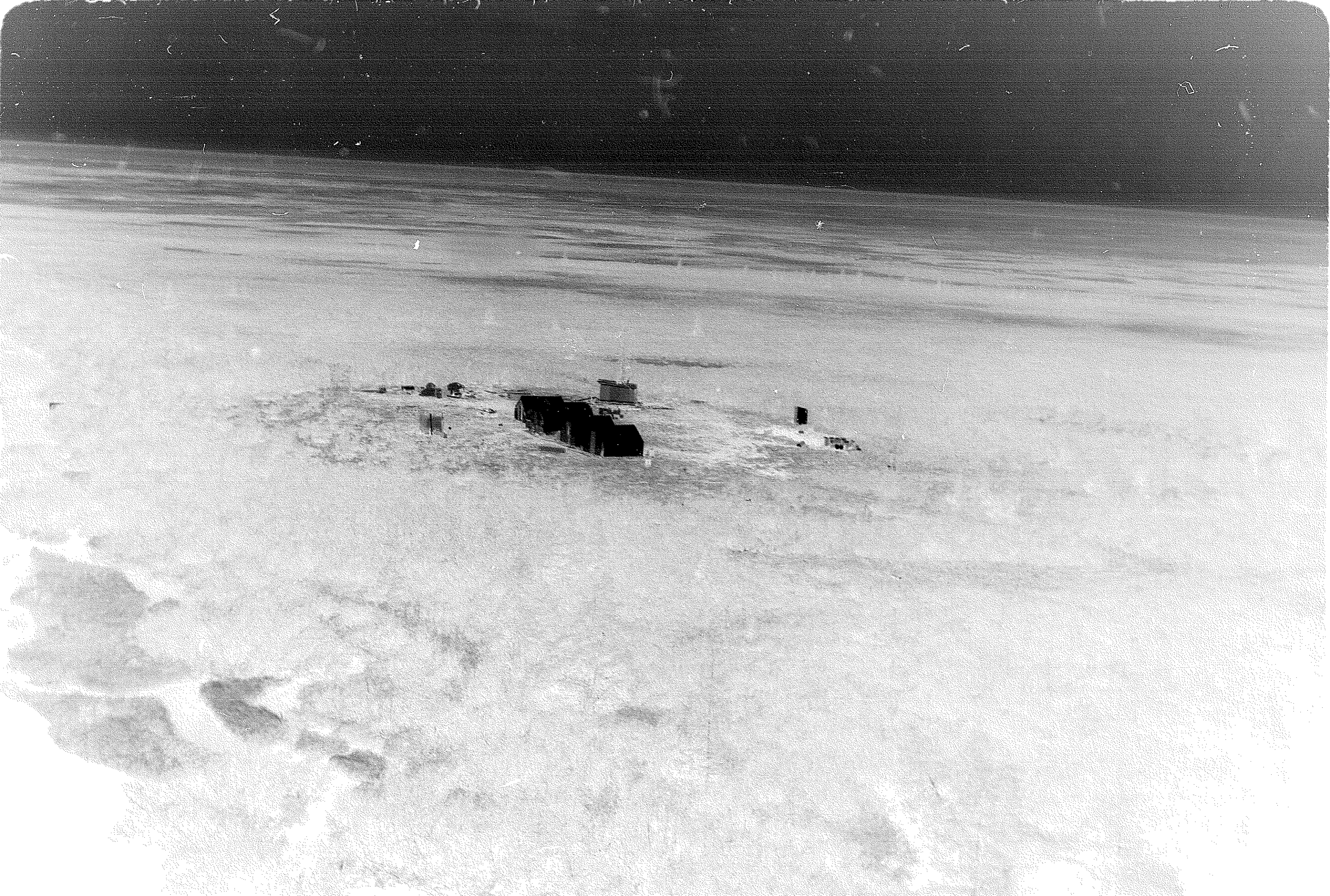


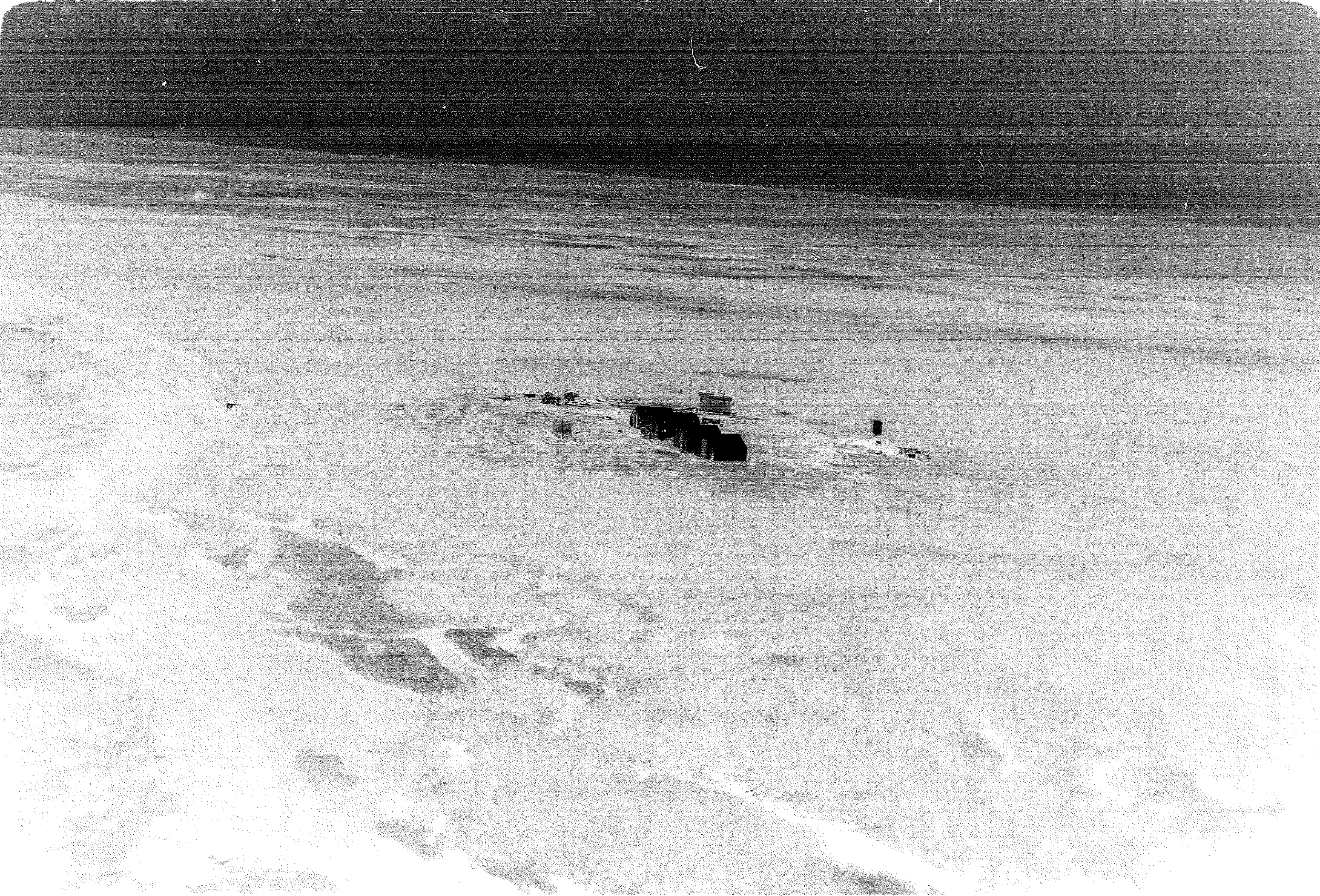






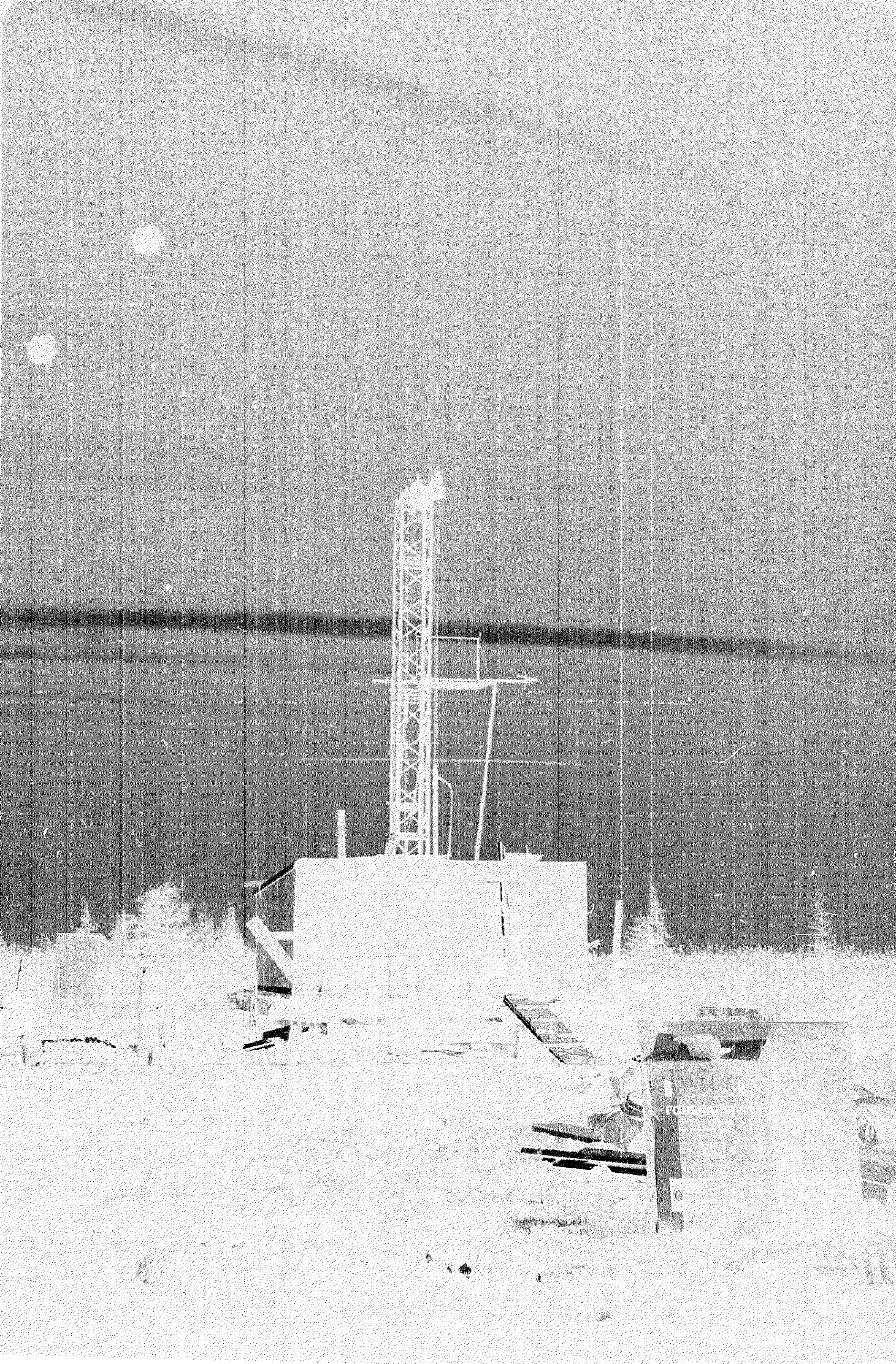












FOURNAISE A

171117

6718

