

Manitoba's Population Trends Past and Present

Population	Date	
25,228	April 2, 1871	
800,000	July 31, 1952	
1,000,000	March 24, 1972	
1,100,000	January 13, 1988	
1,150,000	April 17, 2001	
1,200,000	October 19, 2008	
1,250,000	June 26, 2012	*
1,275,000	February 28, 2014	*
1,300,000	September 5, 2015	*
1,325,000	October 23, 2016	*
1,333,000	April 1, 2017	*

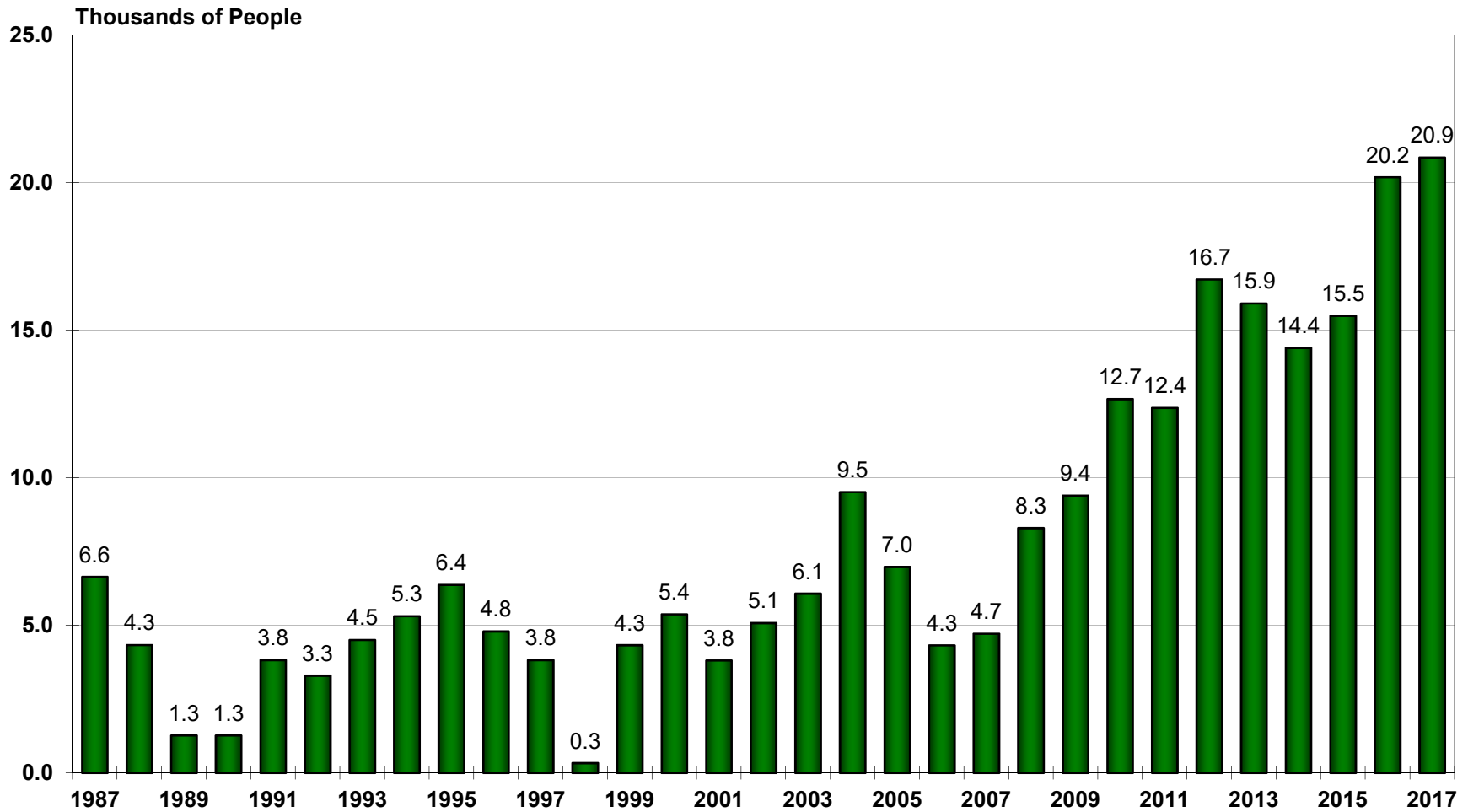
***Please Note:**

The Manitoba Bureau of Statistics (MBS) maintains that Statistics Canada substantially underestimated Manitoba's May 10, 2011 population. Consequently, from May 2011 onward, Statistics Canada's quarterly and annual population estimates for Manitoba are too low. MBS' estimate of the undercount is 16,200 individuals.

Source: Manitoba Bureau of Statistics and Statistics Canada

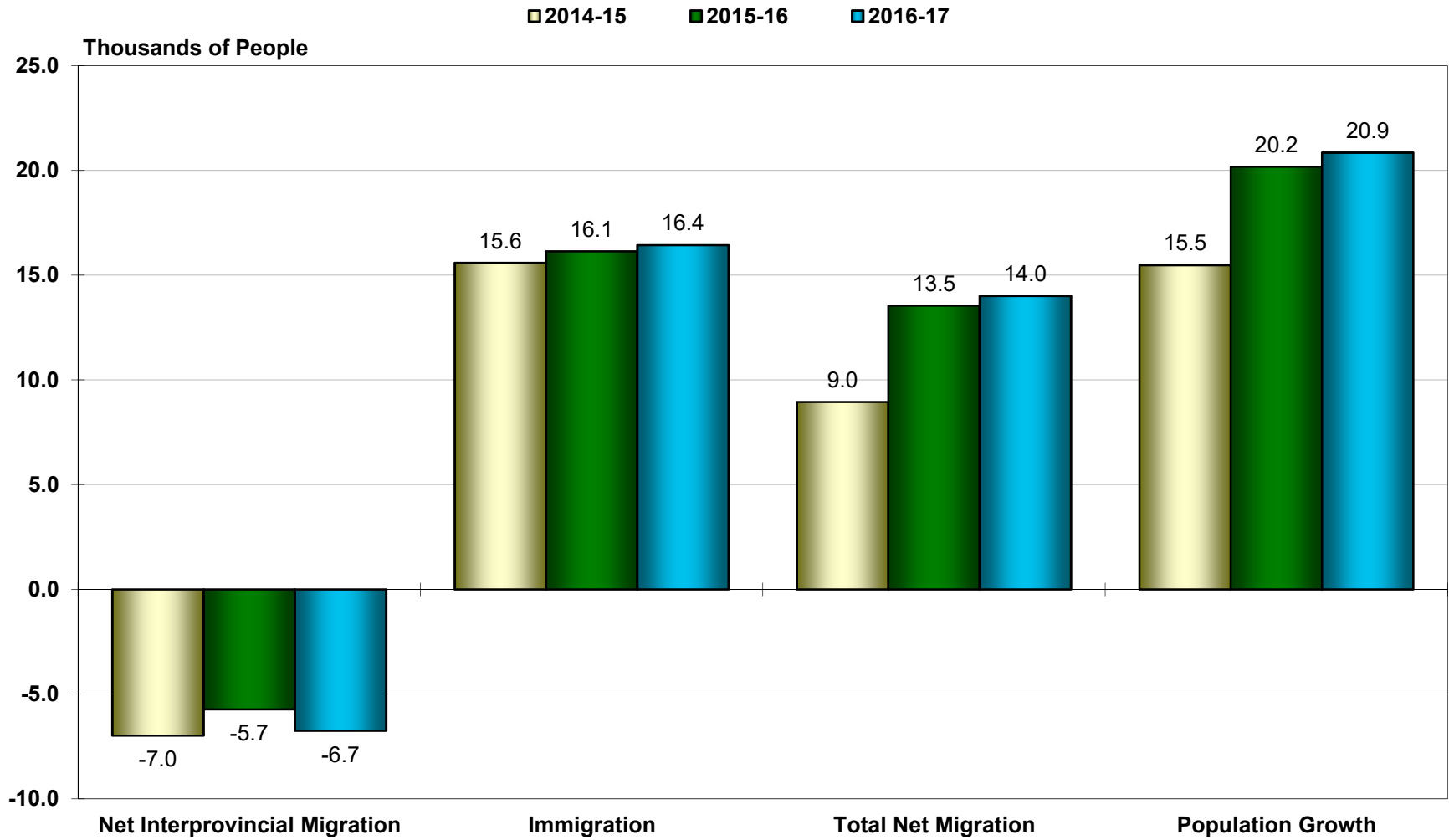
June 15, 2017

MANITOBA ANNUAL POPULATION GROWTH APRIL 1987 TO APRIL 2017



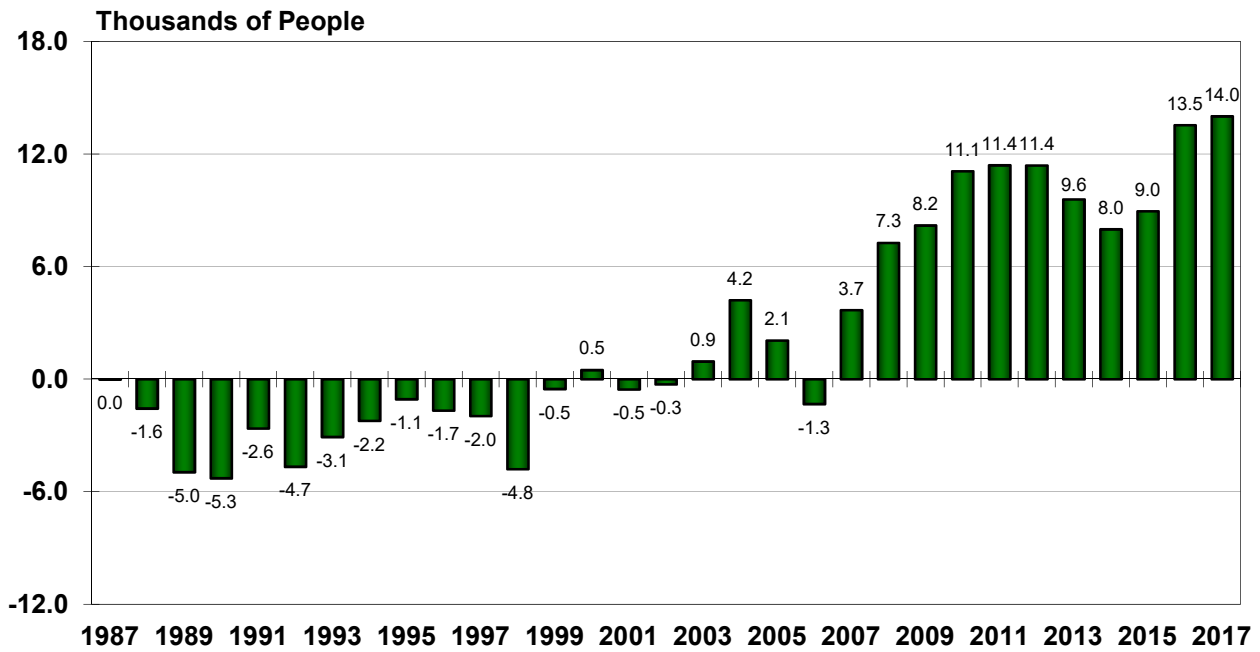
*Note: Annual growth refers to the growth from April of the previous year to April of the current year.
DATA SOURCE: STATISTICS CANADA

MANITOBA COMPARISONS ANNUAL GROWTH 2014-15, 2015-16 AND 2016-17

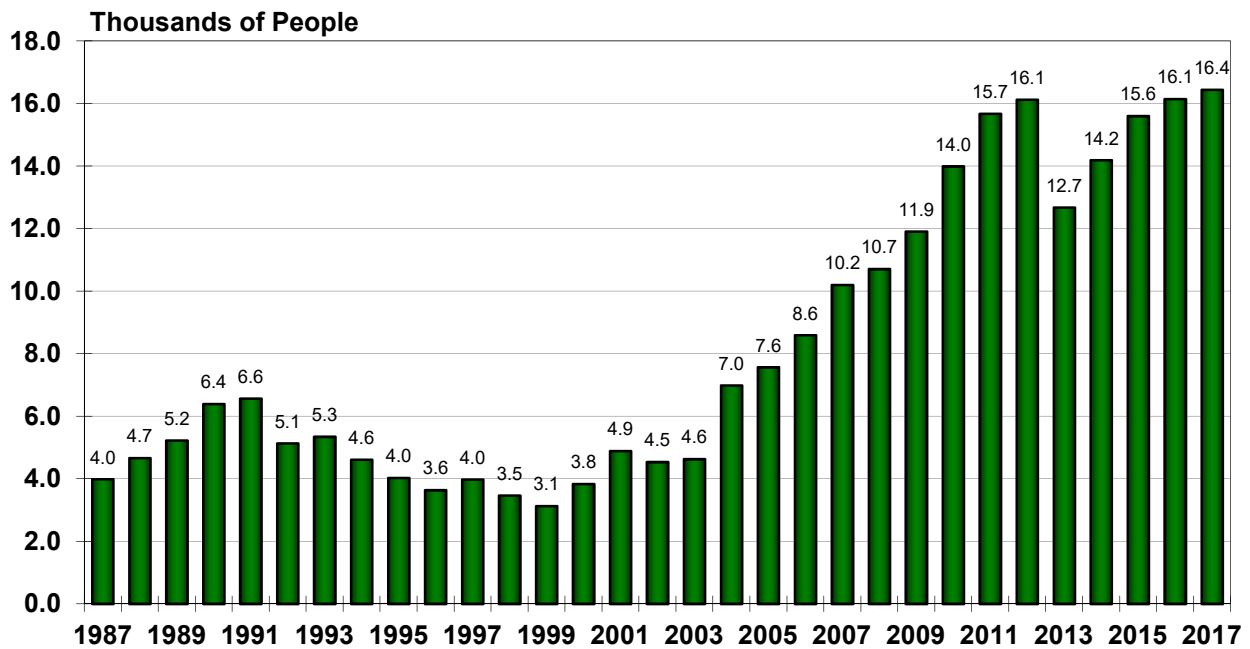


NOTE: DATA IS FROM APRIL 1 TO MARCH 31.

MANITOBA ANNUAL TOTAL NET MIGRATION APRIL 1986 TO APRIL 2017



MANITOBA ANNUAL IMMIGRATION APRIL 1986 TO APRIL 2017



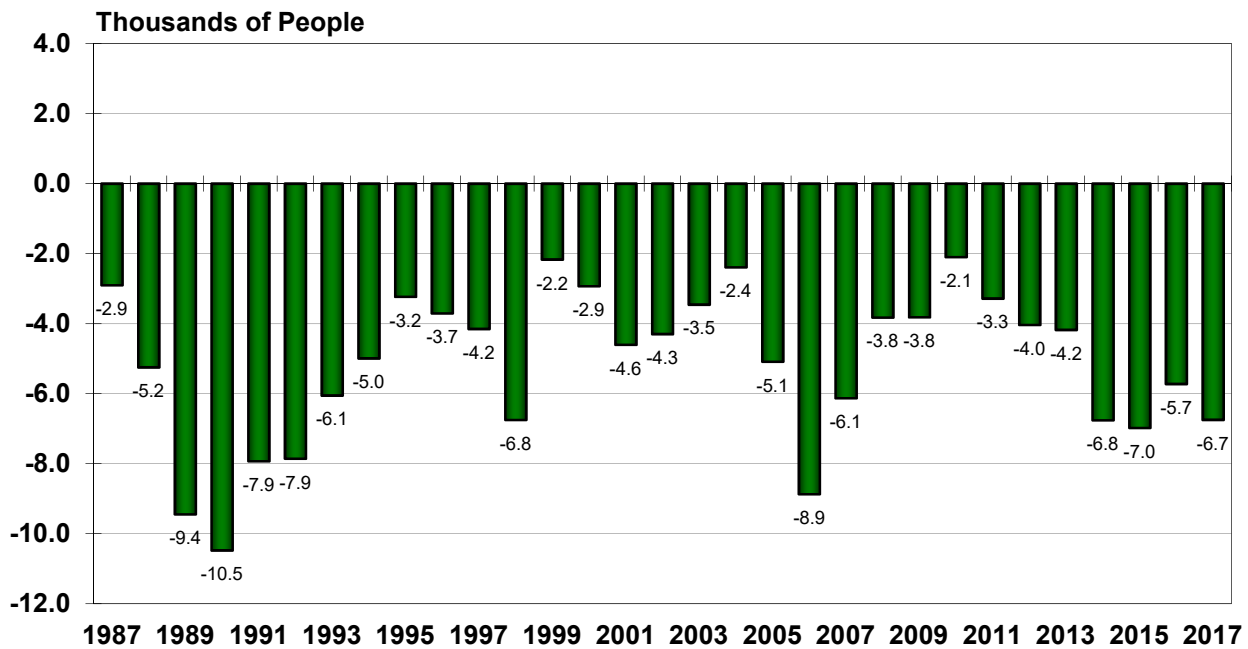
*Note: Annual number refers to the period from April 1 of the previous year to March 31 of the current year.

DATA SOURCE: STATISTICS CANADA

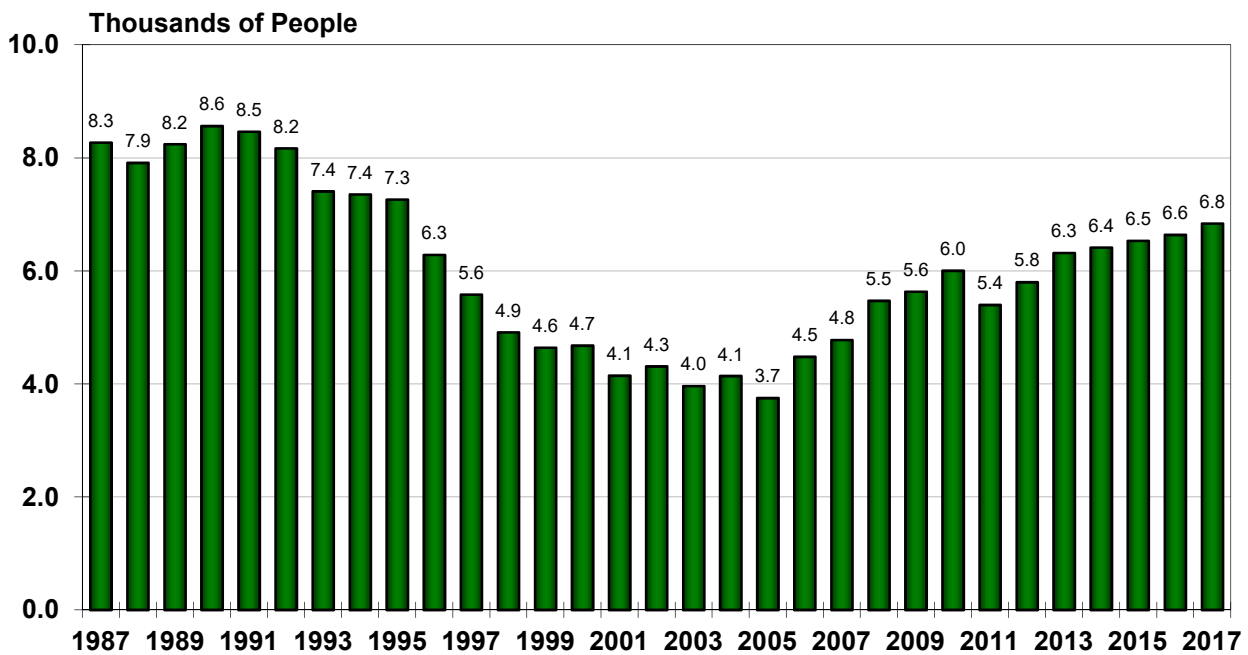
MANITOBA BUREAU OF STATISTICS

JUNE 15, 2017

MANITOBA ANNUAL NET INTERPROVINCIAL MIGRATION APRIL 1986 TO APRIL 2017



MANITOBA ANNUAL NATURAL INCREASE APRIL 1986 TO APRIL 2017



*Note: Annual number refers to the period from April 1 of the previous year to March 31 of the current year.

DATA SOURCE: STATISTICS CANADA

MANITOBA BUREAU OF STATISTICS

JUNE 15, 2017

TABLE 1: MANITOBA DEMOGRAPHIC STATISTICS (ANNUAL)

YEAR	INTERPROVINCIAL MIGRATION	INTERNATIONAL MIGRATION		OTHER (1)	TOTAL NET MIGRATION	NATURAL INCREASE			POPULATION GROWTH	
	NET	IN	OUT	NET		BIRTHS	DEATHS	NET		
1972-73	-6,283	5,337	2,337	3,000	1,478	-1,805	17,071	8,217	8,854	4,901
1973-74	-2,083	7,213	3,029	4,184	1,648	3,749	17,107	8,344	8,763	10,363
1974-75	-6,019	7,370	2,941	4,429	1,332	-258	17,244	8,381	8,863	6,456
1975-76	-4,400	6,799	2,453	4,346	1,560	1,506	17,267	8,349	8,918	8,269
1976-77	-3,796	5,405	2,215	3,190	1,172	566	16,592	8,058	8,534	5,827
1977-78	-4,420	4,845	2,255	2,590	1,104	-726	16,703	8,371	8,332	4,108
1978-79	-9,387	3,413	2,267	1,146	1,051	-7,190	16,297	8,220	8,077	-2,611
1979-80	-13,178	5,921	1,830	4,091	1,299	-7,788	16,123	8,259	7,864	-3,432
1980-81	-10,401	7,269	1,536	5,733	1,389	-3,279	16,029	8,432	7,597	820
1981-82	-4,573	5,166	1,950	3,216	1,684	327	16,181	8,705	7,476	7,446
1982-83	1,459	4,716	1,750	2,966	1,059	5,484	16,109	8,557	7,552	13,335
1983-84	1,863	3,988	2,290	1,698	1,453	5,014	16,707	8,405	8,302	13,615
1984-85	289	3,775	1,598	2,177	687	3,153	16,724	8,364	8,360	11,812
1985-86	-1,838	3,598	1,536	2,062	729	953	17,071	8,902	8,169	9,420
1986-87	-2,900	3,988	2,075	1,913	977	-10	17,013	8,741	8,272	6,643
1987-88	-5,248	4,663	1,886	2,777	912	-1,559	16,902	8,990	7,912	4,328
1988-89	-9,447	5,223	2,266	2,957	1,533	-4,957	17,118	8,876	8,242	1,265
1989-90	-10,476	6,390	2,429	3,961	1,237	-5,278	17,448	8,884	8,564	1,266
1990-91	-7,928	6,562	2,239	4,323	983	-2,622	17,250	8,786	8,464	3,822
1991-92	-7,854	5,130	1,954	3,176	12	-4,666	17,153	8,984	8,169	3,293
1992-93	-6,051	5,342	2,158	3,184	-210	-3,077	16,551	9,144	7,407	4,504
1993-94	-4,990	4,611	1,669	2,942	-170	-2,218	16,670	9,317	7,353	5,309
1994-95	-3,234	4,025	1,992	2,033	134	-1,067	16,521	9,257	7,264	6,371
1995-96	-3,707	3,632	1,495	2,137	-98	-1,668	15,850	9,566	6,284	4,791
1996-97	-4,150	3,975	1,681	2,294	-106	-1,962	15,267	9,686	5,581	3,821
1997-98	-6,750	3,463	1,839	1,624	337	-4,789	14,485	9,572	4,913	331
1998-99	-2,168	3,127	1,731	1,396	249	-523	14,485	9,844	4,641	4,325
1999-00	-2,928	3,834	1,651	2,183	1,232	487	14,432	9,755	4,677	5,371
2000-01	-4,605	4,887	1,639	3,248	815	-542	13,999	9,853	4,146	3,811
2001-02	-4,296	4,533	1,543	2,990	1,027	-279	13,971	9,661	4,310	5,077
2002-03	-3,455	4,626	1,542	3,084	1,319	948	13,748	9,785	3,963	6,072
2003-04	-2,392	6,986	1,578	5,408	1,195	4,211	14,035	9,896	4,139	9,515
2004-05	-5,087	7,564	1,332	6,232	921	2,066	13,794	10,045	3,749	6,976
2005-06	-8,868	8,589	1,898	6,691	857	-1,320	14,244	9,765	4,479	4,320
2006-07	-6,132	10,200	1,609	8,591	1,221	3,680	14,719	9,941	4,778	4,717
2007-08	-3,823	10,705	1,578	9,127	1,960	7,264	15,343	9,873	5,470	8,293
2008-09	-3,819	11,908	1,614	10,294	1,719	8,194	15,616	9,982	5,634	9,398
2009-10	-2,098	13,991	1,473	12,518	672	11,092	15,913	9,910	6,003	12,665
2010-11	-3,281	15,674	1,656	14,018	666	11,403	15,691	10,294	5,397	12,370
2011-12	-4,038	16,121	1,491	14,630	800	11,392	15,860	10,061	5,799	16,718
2012-13	-4,177	12,675	1,540	11,135	2,631	9,589	16,427	10,111	6,316	15,905
2013-14	-6,761	14,191	1,690	12,501	2,248	7,988	16,710	10,297	6,413	14,401
2014-15	-6,976	15,597	1,682	13,915	2,012	8,951	16,995	10,462	6,533	15,484
2015-16	-5,721	16,146	1,687	14,459	4,807	13,545	17,270	10,632	6,638	20,183
2016-17	-6,747	16,438	1,687	14,751	6,010	14,014	17,711	10,874	6,837	20,851

NOTE: DATA IS FROM APRIL 1 TO MARCH 31.

(1) PRIOR TO THE THIRD QUARTER OF 1996 "OTHER" INCLUDED NET NON-PERMANENT RESIDENTS AND RETURNING EMIGRANTS ONLY. FROM THE THIRD QUARTER OF 1996 TO THE PRESENT, "OTHER" INCLUDES NET NON-PERMANENT RESIDENTS AND RETURNING EMIGRANTS LESS NET TEMPORARY EMIGRANTS (FORMERLY CALLED TEMPORARY ABROAD)

DATA SOURCE: STATISTICS CANADA

MANITOBA BUREAU OF STATISTICS
JUNE 15, 2017

TABLE 2: MANITOBA DEMOGRAPHIC STATISTICS (QUARTERLY)

	INTERPROVINCIAL	INTERNATIONAL		OTHER	TOTAL	NATURAL INCREASE			POPULATION	
	MIGRATION	MIGRATION		(1)	NET	BIRTHS	DEATHS	NET	ESTIMATES	
	NET	IN	OUT	NET					(2)	
									('000)	
2002	-4,120	4,615	1,405	3,210	1,180	270	13,888	9,849	4,039	1,156.6
2003	-2,189	6,503	1,586	4,917	1,321	4,049	13,940	9,867	4,073	1,163.5
2004	-3,823	7,426	1,353	6,073	1,115	3,365	13,811	9,903	3,908	1,173.2
2005	-8,602	8,097	1,829	6,268	727	-1,607	14,145	9,857	4,288	1,178.3
2006	-7,277	10,047	1,686	8,361	1,006	2,090	14,565	9,774	4,791	1,183.5
2007	-3,449	10,955	1,573	9,382	2,136	8,069	15,285	9,958	5,327	1,189.4
2008	-3,931	11,219	1,594	9,625	1,661	7,355	15,485	10,073	5,412	1,197.8
2009	-2,514	13,520	1,459	12,061	1,199	10,746	15,940	9,972	5,968	1,208.6
2010	-2,590	15,808	1,640	14,168	303	11,881	15,786	9,985	5,801	1,220.9
2011	-4,171	15,964	1,529	14,435	725	10,989	15,620	10,246	5,374	1,233.7
2012	-3,928	13,312	1,520	11,792	2,324	10,188	16,358	10,062	6,296	1,250.3
2013	-6,146	13,103	1,580	11,523	2,445	7,822	16,646	10,251	6,395	1,265.6
2014	-6,884	16,224	1,678	14,546	2,251	9,913	16,924	10,419	6,505	1,281.0
2015	-6,342	14,906	1,686	13,220	3,826	10,704	17,193	10,587	6,606	1,296.0
2016	-6,659	16,822	1,687	15,135	6,578	15,054	17,609	10,804	6,805	1,318.1
2011										
1Q	-915	3,089	303	2,786	113	1,984	3,687	2,752	935	1,229.1
2Q	-990	4,615	380	4,235	378	3,623	3,946	2,455	1,491	1,233.7
3Q	-1,474	4,523	530	3,993	-167	2,352	4,138	2,459	1,679	1,237.8
4Q	-792	3,737	316	3,421	401	3,030	3,849	2,580	1,269	1,242.1
2012										
1Q	-782	3,246	265	2,981	188	2,387	3,927	2,567	1,360	1,245.8
2Q	-1,164	3,581	336	3,245	790	2,871	4,069	2,480	1,589	1,250.3
3Q	-1,354	3,234	523	2,711	998	2,355	4,448	2,432	2,016	1,254.6
4Q	-628	3,251	396	2,855	348	2,575	3,914	2,583	1,331	1,258.5
2013										
1Q	-1,031	2,609	285	2,324	495	1,788	3,996	2,616	1,380	1,261.7
2Q	-1,993	3,586	334	3,252	1,013	2,272	4,142	2,527	1,615	1,265.6
3Q	-1,710	3,400	554	2,846	799	1,935	4,526	2,479	2,047	1,269.6
4Q	-1,412	3,508	407	3,101	138	1,827	3,982	2,629	1,353	1,272.8
2014										
1Q	-1,646	3,697	395	3,302	298	1,954	4,060	2,662	1,398	1,276.1
2Q	-2,083	4,836	315	4,521	763	3,201	4,209	2,568	1,641	1,281.0
3Q	-2,134	4,225	559	3,666	1,221	2,753	4,603	2,519	2,084	1,285.8
4Q	-1,021	3,466	409	3,057	-31	2,005	4,052	2,670	1,382	1,289.2
2015										
1Q	-1,738	3,070	399	2,671	59	992	4,131	2,705	1,426	1,291.6
2Q	-1,785	4,038	317	3,721	780	2,716	4,279	2,609	1,670	1,296.0
3Q	-1,933	4,075	560	3,515	1,684	3,266	4,670	2,560	2,110	1,301.4
4Q	-886	3,723	410	3,313	1,303	3,730	4,113	2,713	1,400	1,306.5
2016										
1Q	-1,117	4,310	400	3,910	1,040	3,833	4,208	2,750	1,458	1,311.8
2Q	-1,964	5,130	317	4,813	1,773	4,622	4,381	2,653	1,728	1,318.1
3Q	-2,731	4,229	560	3,669	2,719	3,657	4,795	2,622	2,173	1,324.0
4Q	-847	3,153	410	2,743	1,046	2,942	4,225	2,779	1,446	1,328.3
2017										
1Q	-1,205	3,926	400	3,526	472	2,793	4,310	2,820	1,490	1,332.6
2Q										
3Q										
4Q										

(1) PRIOR TO THE THIRD QUARTER OF 1996 "OTHER" INCLUDED NET NON-PERMANENT RESIDENTS AND RETURNING EMIGRANTS ONLY. FROM THE THIRD QUARTER OF 1996 TO THE PRESENT, "OTHER" INCLUDES NET NON-PERMANENT RESIDENTS AND RETURNING EMIGRANTS LESS NET TEMPORARY EMIGRANTS (FORMERLY CALLED TEMPORARY ABROAD).
 (2) ANNUAL ESTIMATES ARE AS OF JULY 1ST.