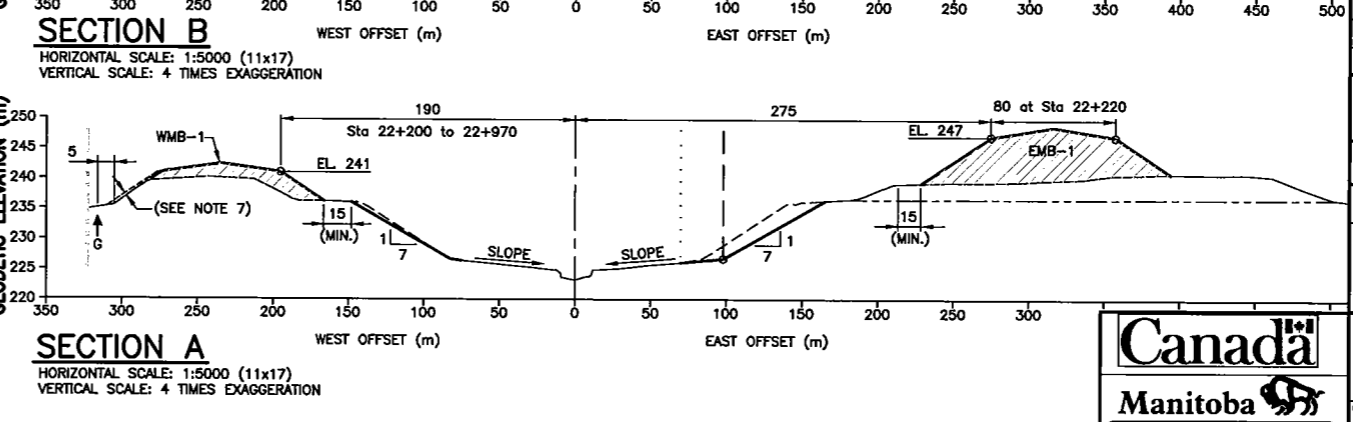
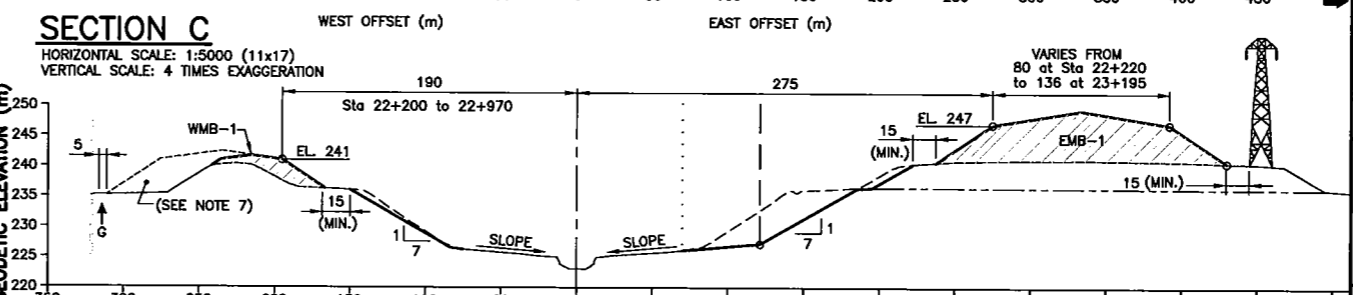
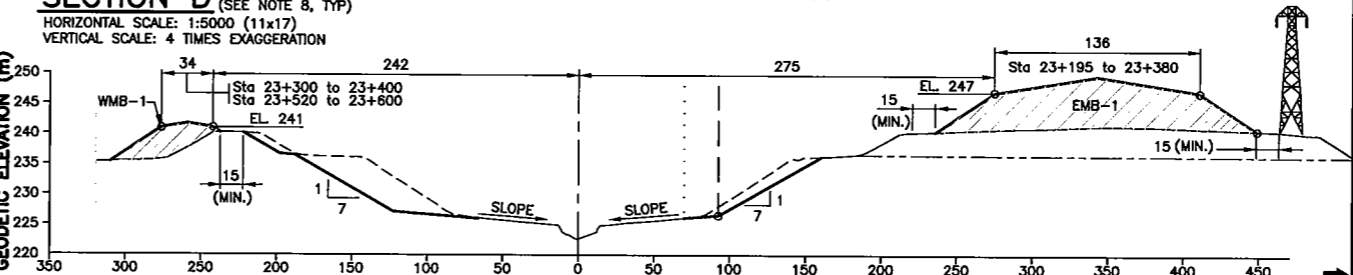
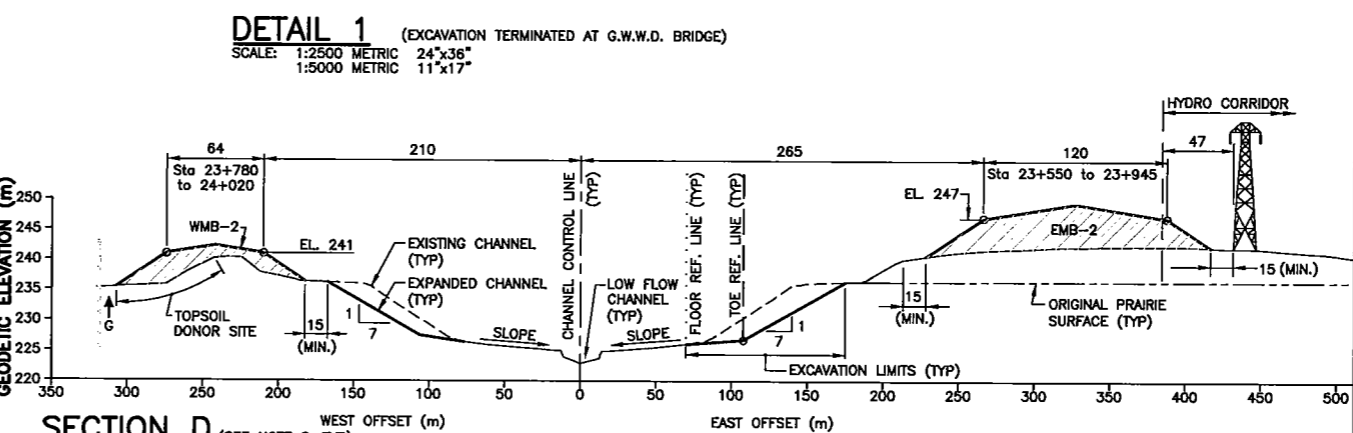
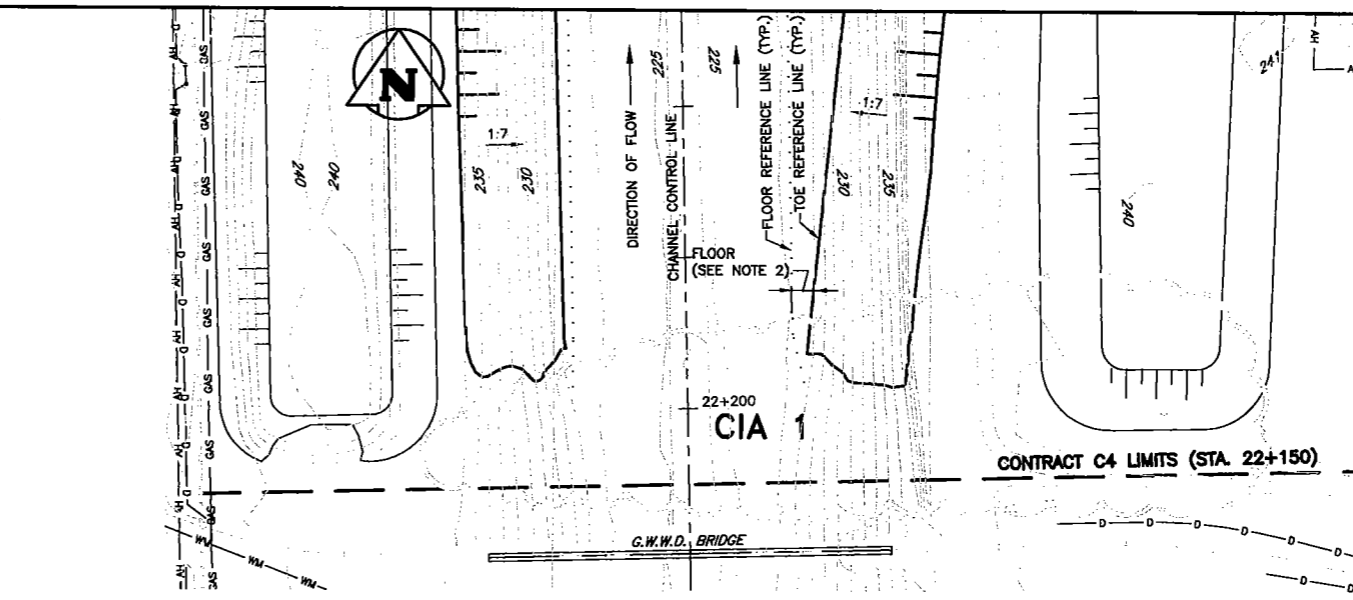
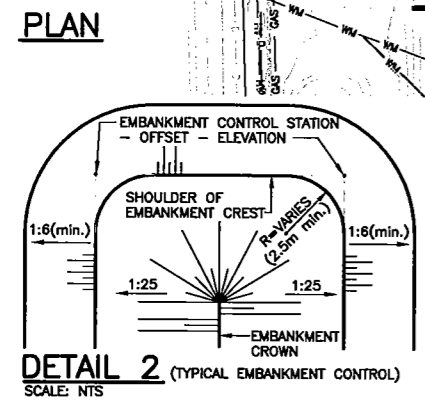
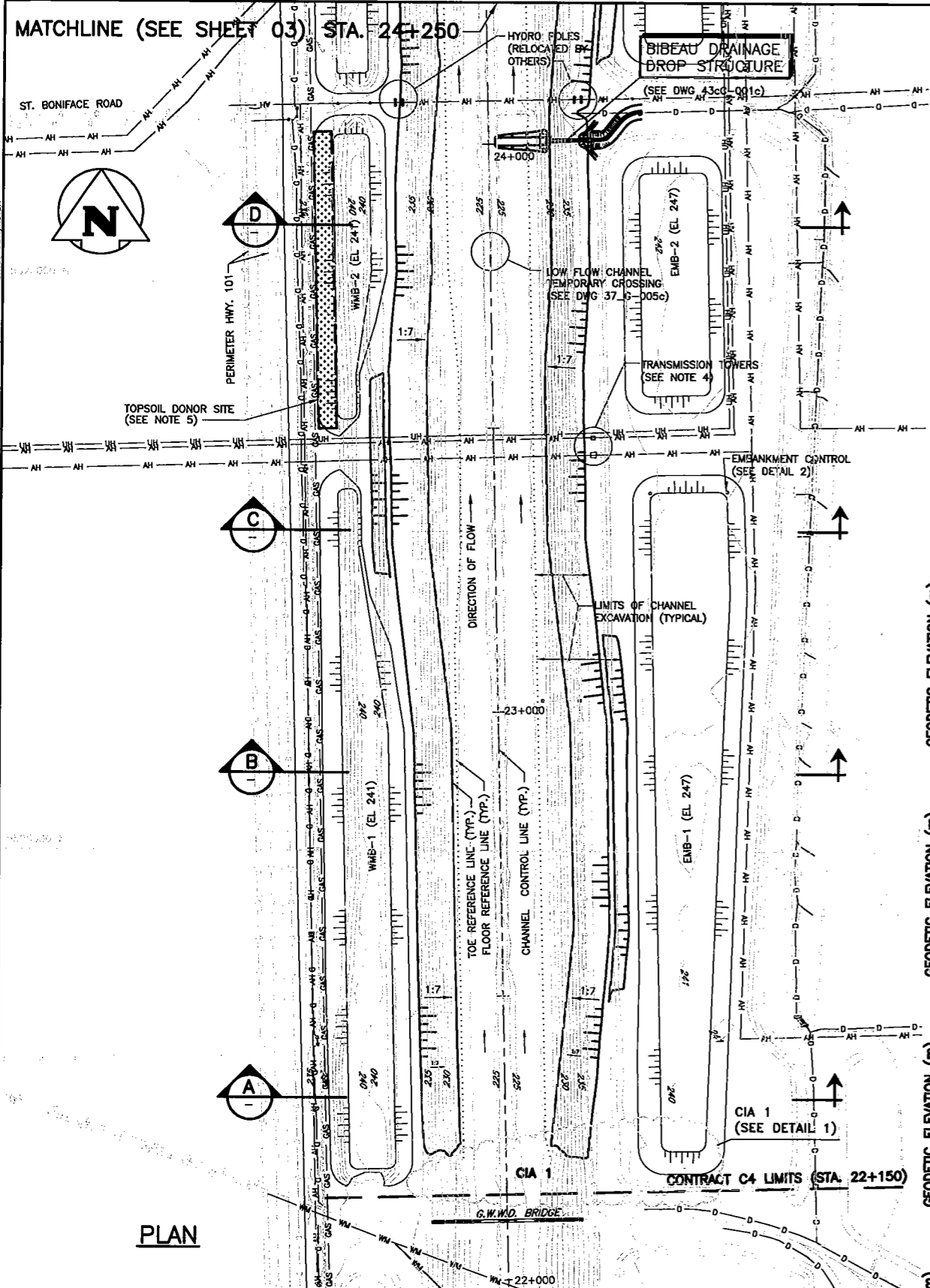
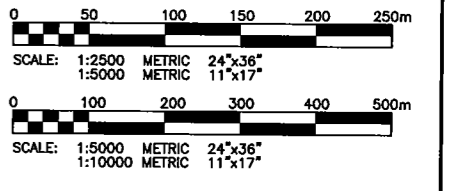


24"x36" / [609]9141  
 X:\projects\2003\03-1100-01\Drawings\Construction\Draws\Specification for TENDERS\Draws\C4b-Channel\Contract C4B-Channel\Draws\C4b-Channel\Contract C4B-Channel.dwg - Tab: Layout 1 - Dec 12, 2006 - 2:03pm - User: jshykulok



- LEGEND:**
- 226 GROUND SURFACE CONTOUR (m)
  - 22+000 STATIONING ALONG CHANNEL CONTROL LINE (m)
  - 1:7 DENOTES, 1 VERTICAL : 7 HORIZONTAL SLOPE
  - EXISTING FLOODWAY CHANNEL ROW
  - MTS MANITOBA TELECOM SERVICES BURIED CABLE
  - AH OVERHEAD HYDRO LINE
  - HYDRO TOWER
  - HYDRO POLE
  - UH UNDERGROUND HYDRO LINE
  - GAS GAS MAIN
  - D DRAINAGE DITCH/CHANNEL
  - RAILWAY
  - ROADS
  - WMB-1 WEST EMBANKMENT No. 1
  - EMB-2 EAST EMBANKMENT No. 2
  - CIA 1 "CONTRACT INTERFACE AREA" (SEE NOTE 3)
  - BURIED GAS CROSSING

- NOTES: (CONTINUED ON SHEET 03)**
1. FOR TYPICAL CHANNEL EXCAVATION AND EMBANKMENT SECTIONS REFER TO DWG 37\_G-005c.
  2. EXPANDED CHANNEL FLOOR SLOPE VARIES AND SHALL BE CALCULATED USING THE EXISTING GROUND SURFACE ELEVATION AT THE FLOOR REFERENCE LINE AND THE ELEVATION AT THE TOE REFERENCE LINE WITH THE PROVISION FOR POSITIVE DRAINAGE.
  3. CONTRACT INTERFACE AREAS (CIA) SHALL BE CONTROLLED ZONES WHERE CONTRACTORS FROM ADJACENT CONTRACTS MAY BE WORKING. DATES AND REQUIREMENTS FOR PRIME CONTRACTING RESPONSIBILITIES ARE DEFINED IN THE SPECIFICATIONS. THE CONTRACTOR SHALL OBTAIN WRITTEN APPROVAL FROM THE CONTRACT ADMINISTRATOR PRIOR TO UNDERTAKING ANY WORK WITHIN THE INTERFACE AREAS, IN ACCORDANCE WITH THE SPECIFICATIONS.
  4. EXCAVATION AROUND EAST TRANSMISSION TOWERS SHALL MAINTAIN A MINIMUM 10m OFFSET FROM THE TOWER FOOTINGS.
  5. TOPSOIL SHALL BE SALVAGED WITHIN THE APPROXIMATE LIMITS SHOWN BY EXCAVATING TO A DEPTH OF APPROXIMATELY 0.3m PRIOR TO EMBANKMENT CONSTRUCTION, IN ACCORDANCE WITH THE SPECIFICATIONS.
  6. CIA 3 INDICATES APPROVED LIMITS OF INTERFACE WITH MTGS BORROW SOURCING.



QA 13/11/06	ISSUED PRELIMINARY FOR REVIEW	JS	MRJ	JBS
NO.	DATE	REVISIONS	BY	CKD, APP.

**KGS GROUP**

SUBCONSULTANT DWG NO.:

C of A

**APEGN**  
 Certificate of Authorization  
 KGS Group  
 No. 245 Expiry: April 30, 2007

DESIGNED BY: JS	DRAWN BY: GAC	SCALE: AS NOTED
CHECKED BY: MRJ	APPROVED BY: J B SMITH	DATE: NOVEMBER, 2006

KGS GROUP SUBMITTED BY: RICK CARSON

OWNER:

**MANITOBA FLOODWAY AUTHORITY**

PROJECT: RED RIVER FLOODWAY EXPANSION

PHASE: MAIN CHANNEL CONTRACT No C4B

TITLE: MAIN CHANNEL EXCAVATION PLAN AND SECTIONS (SHEET 2 OF 3)

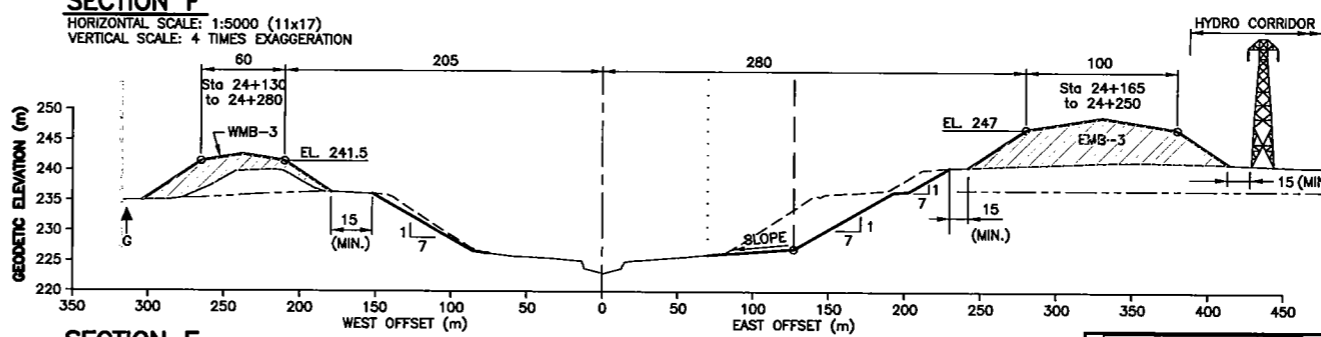
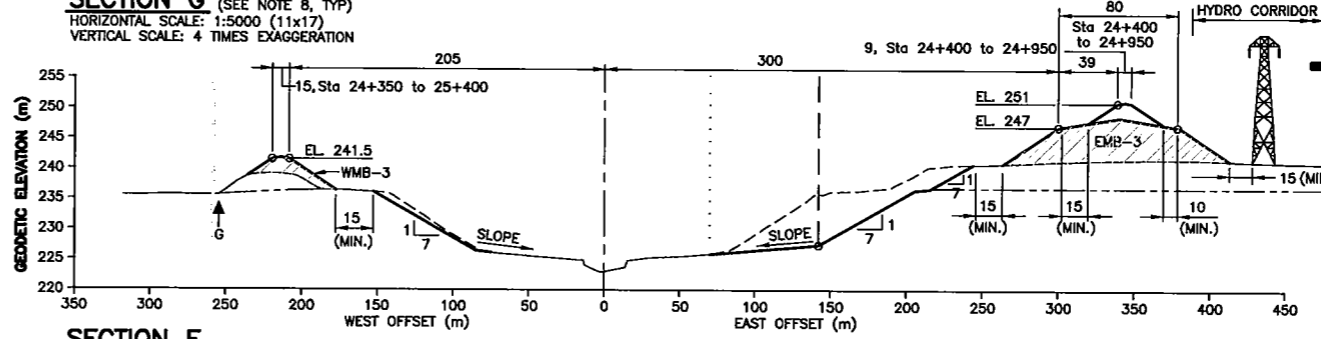
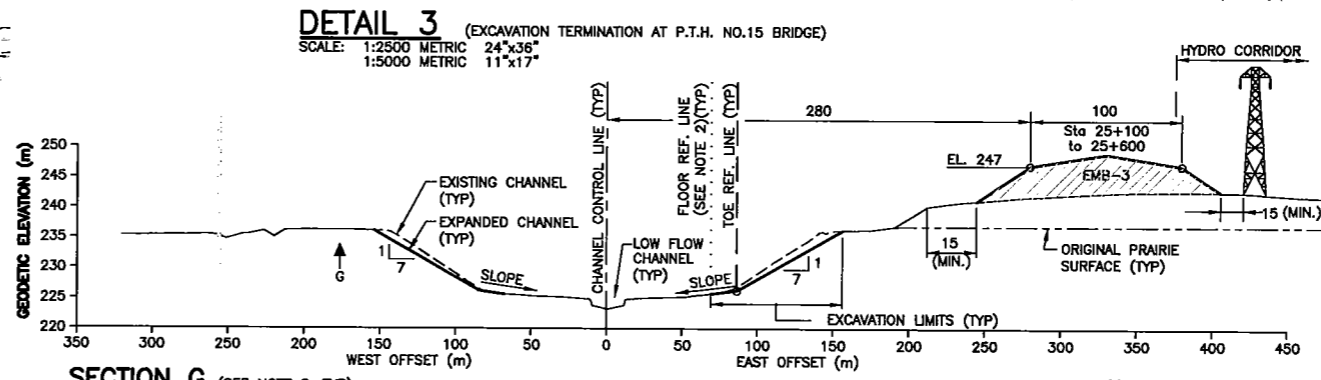
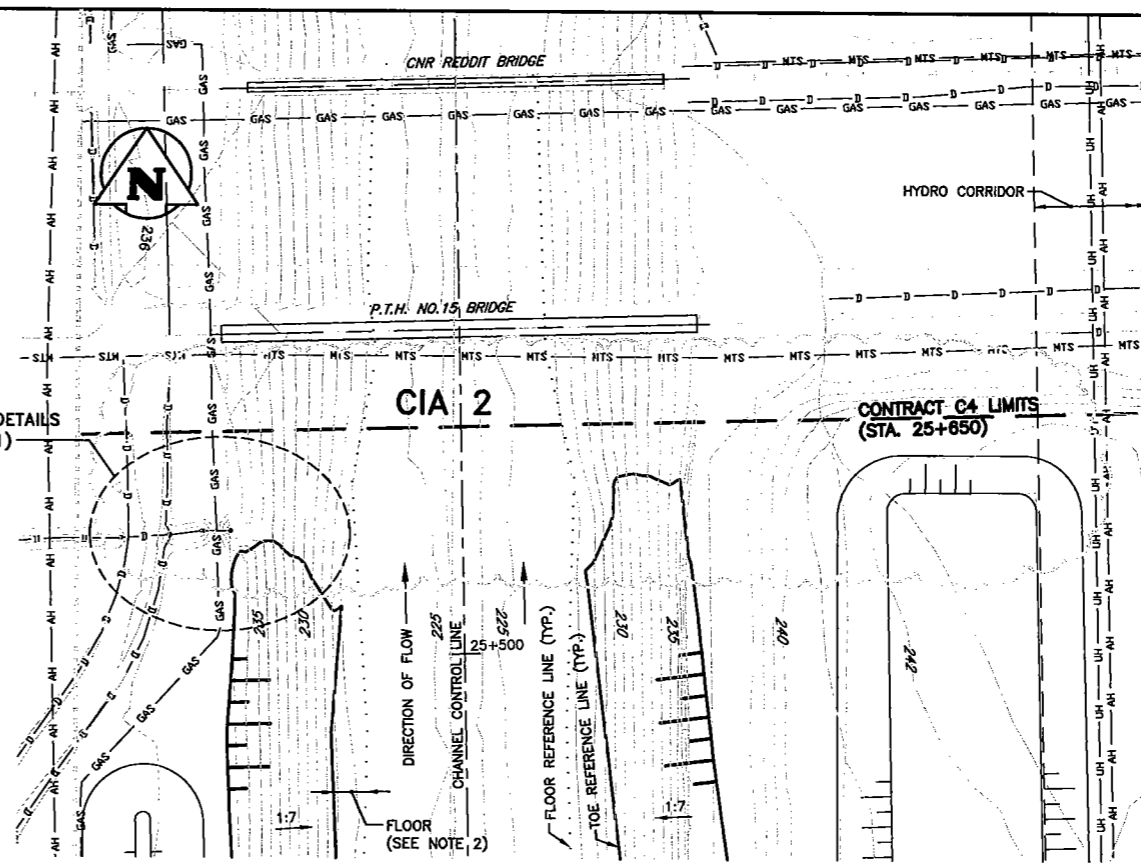
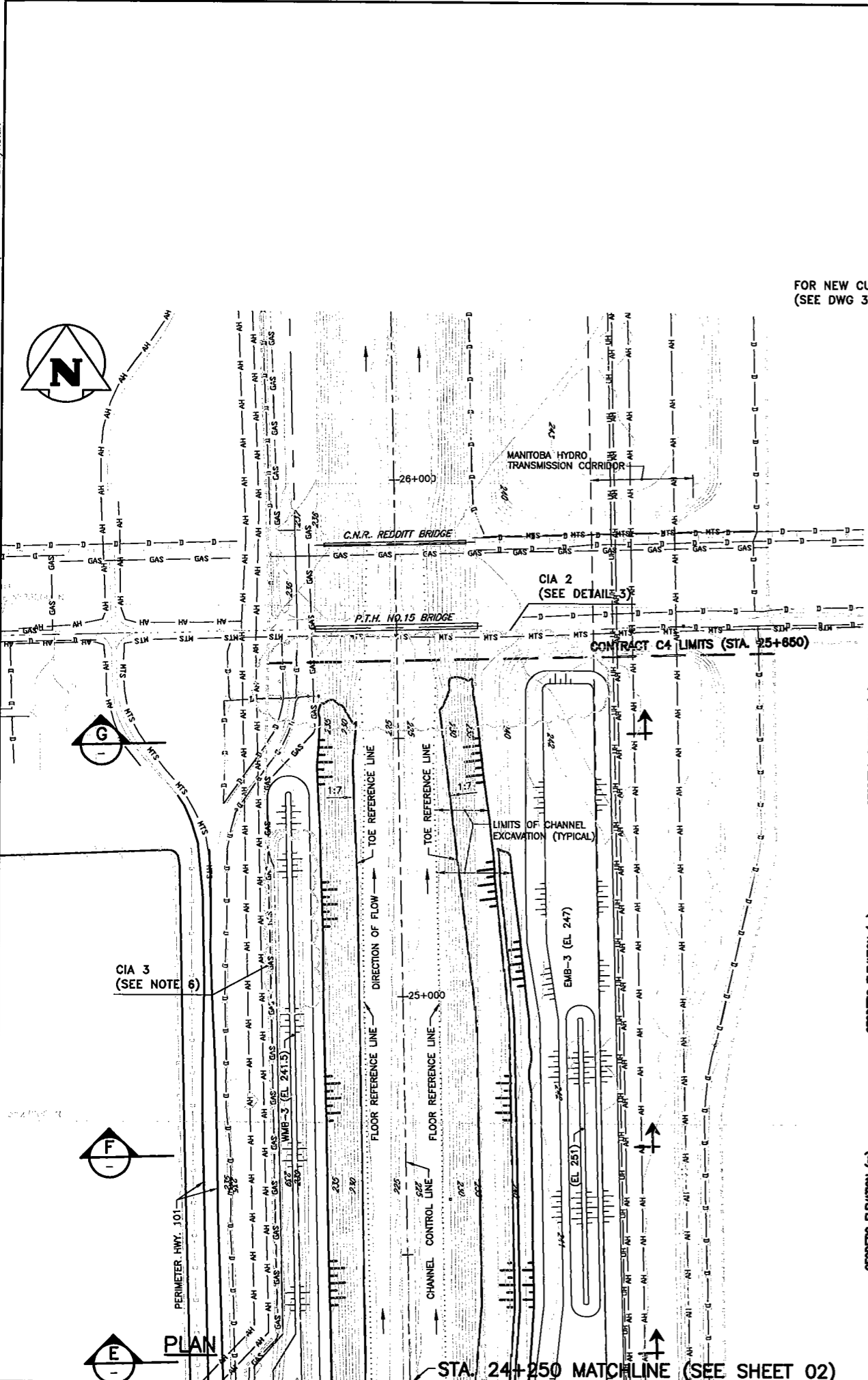
RELEASED FOR ACCEPTANCE:

VIC. PRESIDENT OF ENGINEERING AND CONSTRUCTION

OWNER DWG NO.: C4B-37_G-004c	SHT. 02	REV. 0A
------------------------------	---------	---------

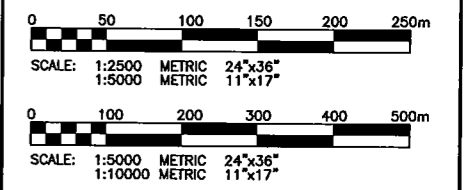


24"x36"/[609x41] X:\projects\2003\03-1100-01\Drawings\Construction\Contract C4B\Channel C4B\Channel C4B.dwg - Tab: SHEET 3 - Dec 12, 2006 - 2:04pm - User: jshykoluk



- LEGEND:**
- 226 GROUND SURFACE CONTOUR (m)
  - CHANNEL CONTROL LINE
  - 25+000 STATIONING ALONG CHANNEL CONTROL LINE (m)
  - 1:7 DENOTES, 1 VERTICAL : 7 HORIZONTAL SLOPE
  - EXISTING FLOODWAY CHANNEL ROW
  - MANITOBA TELECOM SERVICES BURIED CABLE
  - OVERHEAD HYDRO LINE
  - HYDRO TOWER
  - UNDERGROUND HYDRO LINE
  - GAS MAIN
  - DRAINAGE DITCH/CHANNEL
  - RAILWAY
  - ROADS
  - WMB-1 WEST EMBANKMENT No. 1
  - EMB-2 EAST EMBANKMENT No. 2
  - CIA 2 "CONTRACT INTERFACE AREA" (SEE NOTE 3)
  - G BURIED GAS CROSSING

- NOTES:** (CONTINUED FROM SHEET 02)
7. BETWEEN STA. 22+200 AND 22+700 THE BACK SIDE OF THE EXISTING EMBANKMENT SHALL ONLY BE USED FOR DISPOSAL IF NECESSARY AND ANY PLACEMENT WITHIN SHALL BE APPROVED BY THE CONTRACT ADMINISTRATOR.
  8. REFER TO DWG 37\_G-006c-01-01 FOR EMBANKMENT STATIONING DEFINING END LIMITS AND TRANSITION ZONES.



NO.	13/11/06	ISSUED PRELIMINARY FOR REVIEW	JS	MRJ	JBS
DATE		REVISIONS	BY	CKD.	APP.
<b>KGS GROUP</b>					
SUBCONSULTANT DWG NO.:					
C of A					
<b>APECM</b> Certificate of Authorization KGS Group No. 245 Expiry: April 30, 2007					ENG. STAMP
DESIGNED BY:	JS	DRAWN BY:	GAC	SCALE:	AS NOTED
CHECKED BY:	MRJ	APPROVED BY:	J B SMITH	DATE:	NOVEMBER, 2006
KGS GROUP SUBMITTED BY: RICK CARSON					
OWNER					
<b>MANITOBA FLOODWAY AUTHORITY</b>					
PROJECT:					
RED RIVER FLOODWAY EXPANSION					
PHASE:					
MAIN CHANNEL CONTRACT No C4B					
TITLE:					
MAIN CHANNEL EXCAVATION PLAN AND SECTIONS (SHEET 3 OF 3)					
RELEASED FOR ACCEPTANCE:					
VICE PRESIDENT OF ENGINEERING AND CONSTRUCTION					
OWNER DWG NO.:	C4B-37_G-004c	SHT.	03	REV.	0A



STA. 24+250 MATCHLINE (SEE SHEET 02)