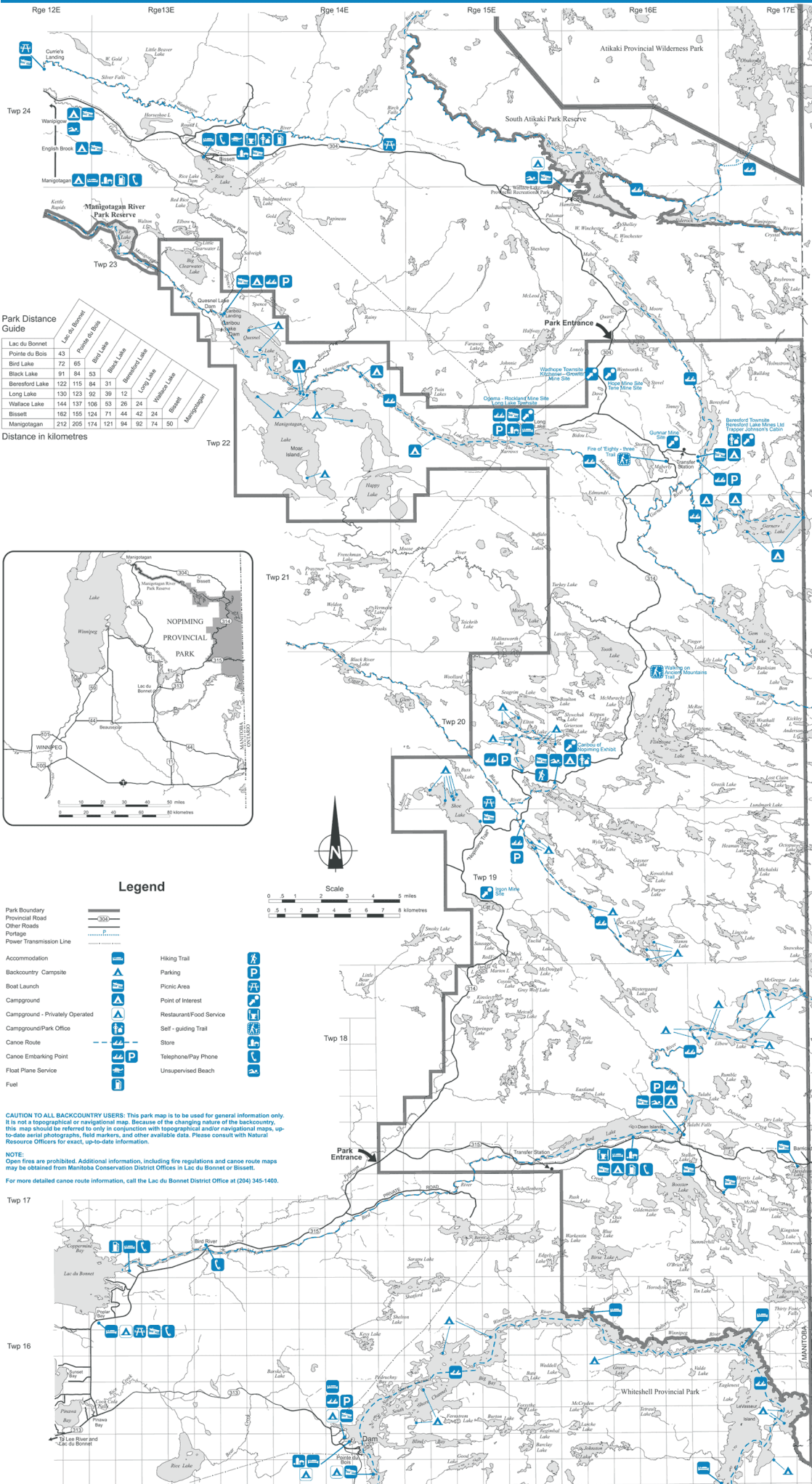


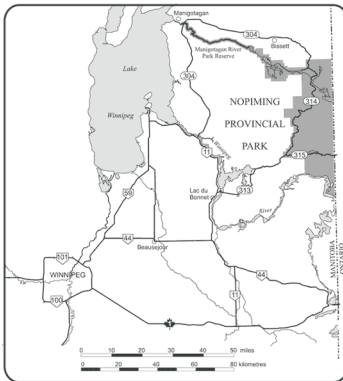
Nopiming Provincial Park



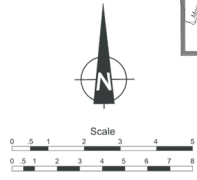
Park Distance Guide

	Lac du Bonnet	Pointe du Bois	Bird Lake	Black Lake	Barnesford Lake	Long Lake	Wallace Lake	Bissett	Manigotagan
Lac du Bonnet	43								
Pointe du Bois	72	65							
Bird Lake	91	84	53						
Black Lake	123	115	84	31					
Barnesford Lake	130	123	92	39	12				
Long Lake	144	137	106	53	26	24			
Wallace Lake	162	155	124	71	44	42	24		
Bissett	212	205	174	121	94	92	74	50	
Manigotagan									

Distance in kilometres



- Legend**
- Park Boundary
 - Provincial Road
 - Other Roads
 - Portage
 - Power Transmission Line
 - Accommodation
 - Backcountry Campsite
 - Boat Launch
 - Campground
 - Campground - Privately Operated
 - Campground/Park Office
 - Canoe Route
 - Canoe Embarking Point
 - Floater Plane Service
 - Fuel
 - Hiking Trail
 - Parking
 - Picnic Area
 - Point of Interest
 - Restaurant/Food Service
 - Self-guiding Trail
 - Store
 - Telephone/Play Phone
 - Unsupervised Beach



CAUTION TO ALL BACKCOUNTRY USERS: This park map is to be used for general information only. It is not a topographical or navigational map. Because of the changing nature of the backcountry, this map should be referred to only in conjunction with topographical and/or navigational maps, up-to-date aerial photographs, field markers, and other available data. Please consult with Natural Resource Officers for exact, up-to-date information.

NOTE: Open fires are prohibited. Additional information, including fire regulations and canoe route maps may be obtained from Manitoba Conservation District Offices in Lac du Bonnet or Bissett.

For more detailed canoe route information, call the Lac du Bonnet District Office at (204) 345-1400.