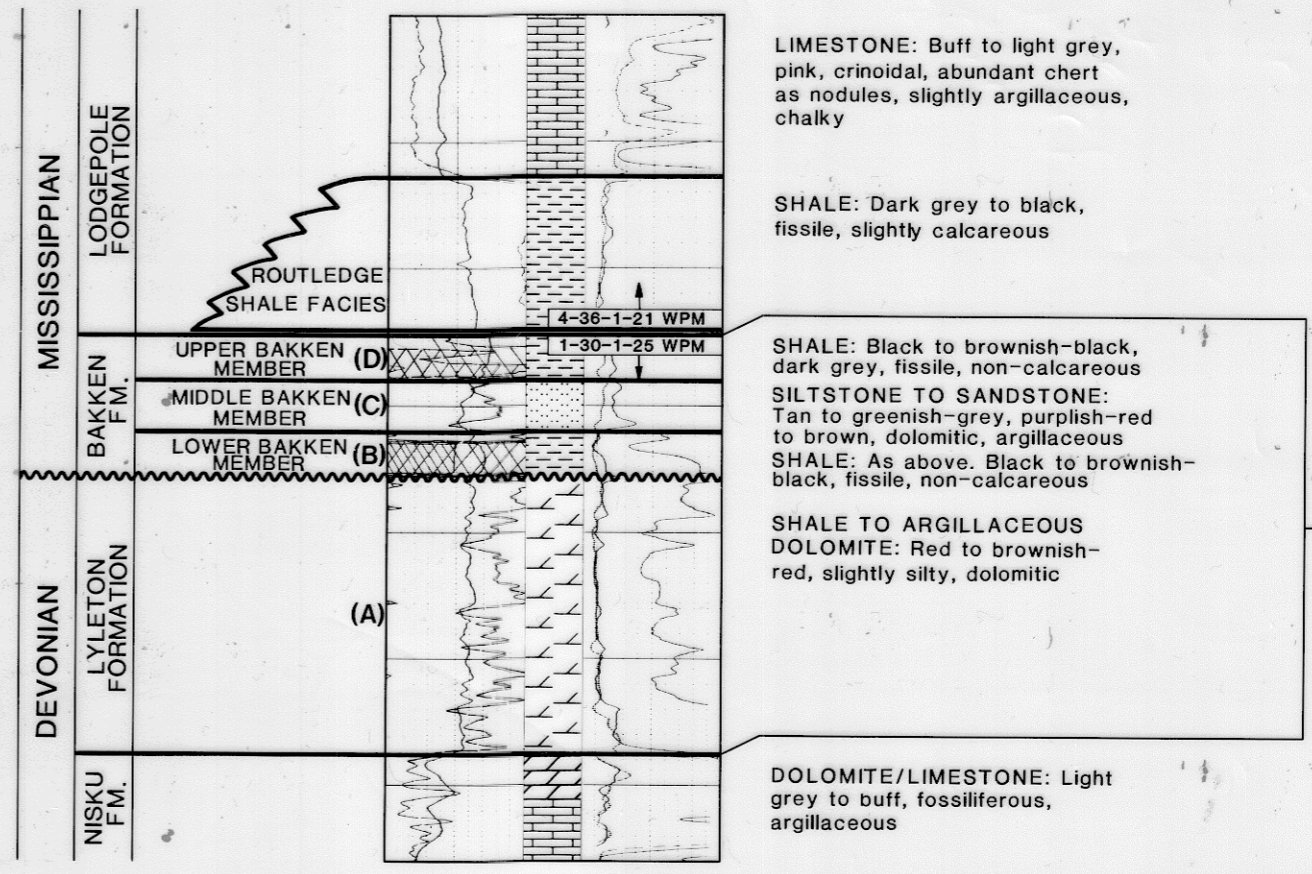


**COMPOSITE LOGS**  
 ROYALITE TURTLE MTN. PROV.  
 4-36-1-21 WPM  
 IMPERIAL CHEVRON HERNEFIELD PROV.  
 1-30-1-25 WPM



**LIMESTONE:** Buff to light grey, pink, crinoidal, abundant chert as nodules, slightly argillaceous, chalky

**SHALE:** Dark grey to black, fissile, slightly calcareous

**SHALE TO ARGILLACEOUS SILTSTONE TO SANDSTONE:** Tan to greenish-grey, purplish-red to brown, dolomitic, argillaceous

**SHALE:** As above. Black to brownish-black, fissile, non-calcareous

**SHALE TO ARGILLACEOUS DOLOMITE:** Red to brownish-red, slightly silty, dolomitic

**DOLOMITE/LIMESTONE:** Light grey to buff, fossiliferous, argillaceous

**ISOPACH INTERVAL**

**COMPOSITE TYPE SECTION**  
 SHOWING GENERALIZED STRATIGRAPHIC COLUMN

<p><b>WELL STATUS INFORMATION</b></p> <ul style="list-style-type: none"> <li>● Standing</li> <li>◆ Abandoned salt water disposal</li> <li>● Producer</li> <li>◆ Dual completion</li> <li>◆ Abandoned producer</li> <li>◆ Abandoned dual completion</li> <li>◆ Dry and abandoned</li> <li>● Water supply well</li> <li>◆ Water injection well</li> <li>◆ Abandoned water supply well</li> <li>● Salt water disposal</li> <li>◆ Abandoned structure test hole</li> </ul>	<p><b>TOPOGRAPHICAL INFORMATION</b></p> <ul style="list-style-type: none"> <li>○ Provincial trunk highway</li> <li>— Provincial regional road</li> <li>— Railway</li> <li>— Underground pipeline</li> <li>— Power transmission line</li> <li>■ Built up area, other localities</li> </ul>	<p><b>GEOLOGICAL INFORMATION</b></p> <ul style="list-style-type: none"> <li>— International boundary</li> <li>— Provincial boundary</li> <li>— Township/range</li> <li>— Section line (surveyed, unsurveyed)</li> <li>— Oil field boundary</li> <li>— Park or Indian Reserve boundary</li> <li>— Isopach (5m interval)</li> <li>— Lines of cross-section</li> <li>— Supplementary well control projected to the lines of cross-section</li> <li>— Lyleton Formation partly eroded</li> <li>— Nisku Formation partly eroded</li> <li>— Duperow Formation partly eroded</li> </ul>	<p><b>BAKKEN</b></p> <ul style="list-style-type: none"> <li>◆ NP Bakken - Lyleton interval not completely penetrated</li> <li>● Core examined</li> <li>▨ Bakken Formation absent</li> <li>▨ Hartney area (Twp 5, Rge 24) - structurally complex. Contours not shown</li> <li>▨ f - Bakken absent due to faulting</li> <li>▨ Area of occurrence of Routledge Shale Facies</li> <li>▨ Area in which the Bakken - Lyleton interval has been affected by salt collapse</li> <li>▨ Unit(s) locally thickened due to salt collapse (see Composite Type Section for unit designation)</li> </ul>
--	---	--	---

**Figure 5**  
**ISOPACH MAP**  
**BAKKEN & LYLETON FORMATIONS**  
**SOUTHWESTERN MANITOBA**

Scale: 1:250,000  
 0 5 10 km

DATE: DECEMBER 31, 1987  
 GEOLOGY: C. MARTINIUK  
 CARTOGRAPHY: M. McFARLANE



*Revised to 48 70*