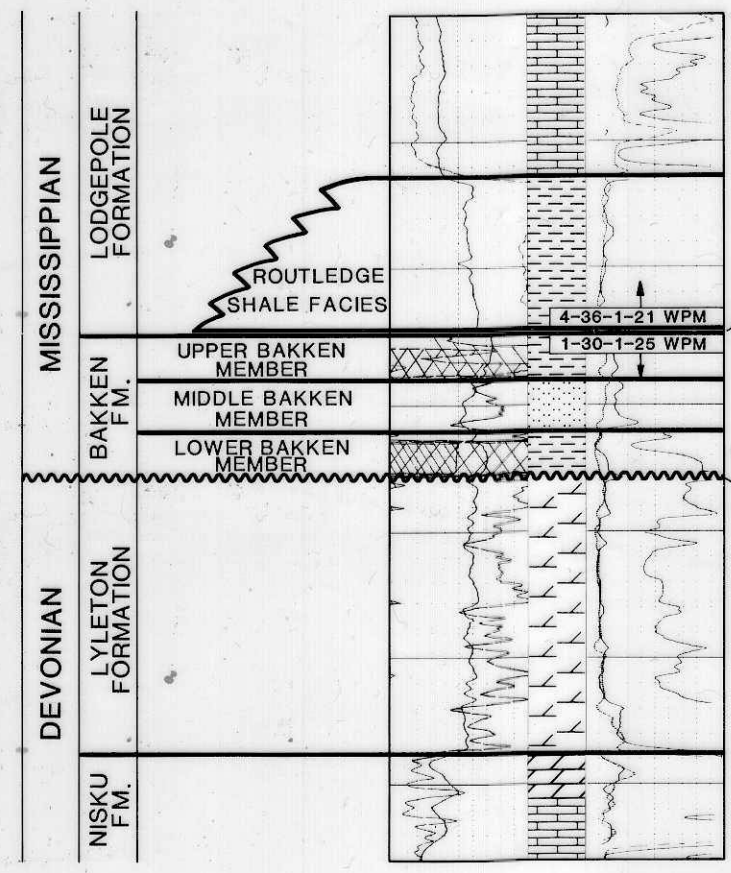


COMPOSITE LOGS
 ROYALITE TURTLE MTN. PROV.
 4-36-1-21 WPM
 IMPERIAL CHEVRON HERNEFIELD PROV.
 1-30-1-25 WPM



LIMESTONE: Buff to light grey, pink, crinoidal, abundant chert as nodules, slightly argillaceous, chalky

SHALE: Dark grey to black, fissile, slightly calcareous

SHALE: Black to brownish-black, dark grey, fissile, non-calcareous

SILTSTONE TO SANDSTONE: Tan to greenish-grey, purplish-red to brown, dolomitic, argillaceous

SHALE: As above. Black to brownish-black, fissile, non-calcareous

SHALE TO ARGILLACEOUS DOLOMITE: Red to brownish-red, slightly silty, dolomitic

DOLOMITE/LIMESTONE: Light grey to buff, fossiliferous, argillaceous

ISOPACH INTERVAL

COMPOSITE TYPE SECTION
 SHOWING GENERALIZED STRATIGRAPHIC COLUMN

Figure 6
TOTAL BAKKEN FORMATION
SOUTHWESTERN MANITOBA

1:250,000
 km 5 0 5 10

Not to be reproduced in any manner whatsoever without the written permission of the Director of the Petroleum Division.

DATE: DECEMBER 31, 1987
 GEOLOGY: C. MARTINIUK
 CARTOGRAPHY: M. MCFARLANE



WELL STATUS INFORMATION

- Standing
- Producer
- ✦ Abandoned producer
- ✧ Dry and abandoned
- ✧ Water injection well
- Salt water disposal
- ✦ Abandoned salt water disposal
- Dual completion
- ✦ Abandoned dual completion
- ✧ Water supply well
- ✧ Abandoned water supply well
- ✧ Abandoned structure test hole

TOPOGRAPHICAL INFORMATION

- Provincial trunk highway
- Provincial regional road
- Railway
- Underground pipeline
- Power transmission line
- Built up area, other localities
- International boundary
- Provincial boundary
- Township/range
- Section line (surveyed, unsurveyed)
- Oil field boundary
- Park or Indian Reserve boundary

GEOLOGICAL INFORMATION

- Isopach (2m interval)
- Lines of cross-section
- Supplementary well control projected to the lines of cross-section
- Lyleton Formation partly eroded
- Nisku Formation partly eroded
- Duperow Formation partly eroded
- ✧ NP Bakken Formation not completely penetrated
- ⊕ Core examined
- ⊖ Bakken Formation absent
- ⊖ Hartney area (Twp 5, Rge 24) - structurally complex - Contours not shown - Bakken absent due to faulting
- ⊖ Area of occurrence of Routledge Shale Facies
- ⊖ Area of occurrence of Lower Bakken Member

Only wells drilled to the Bakken Formation and deeper are shown.