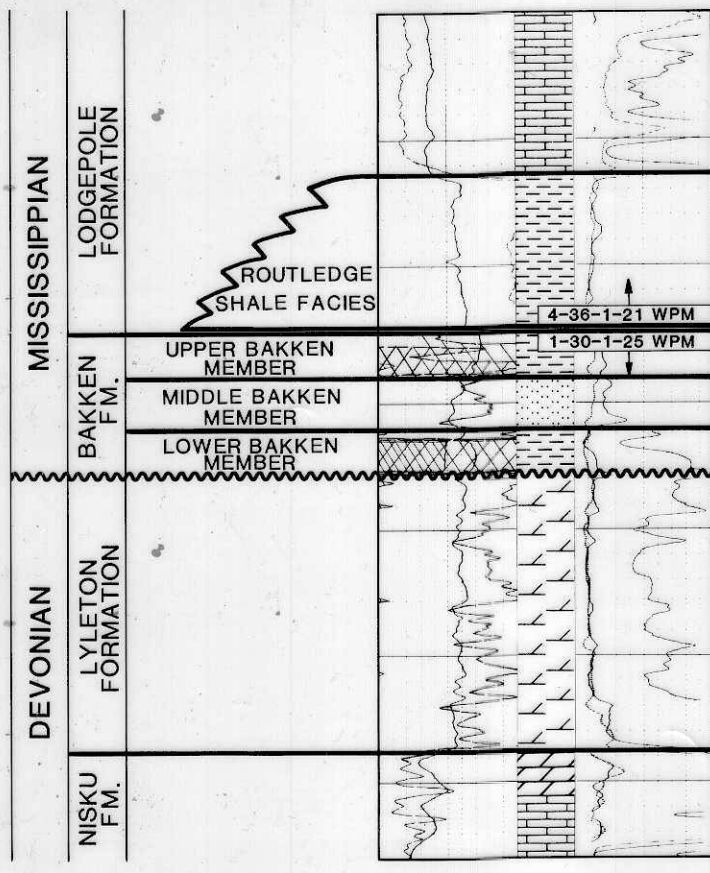


COMPOSITE LOGS
 ROYALITE TURTLE MTN. PROV.
 4-36-1-21 WPM
 IMPERIAL CHEVRON HERNEFIELD PROV.
 1-30-1-25 WPM



LIMESTONE: Buff to light grey, pink, crinoidal, abundant chert as nodules, slightly argillaceous, chalky

SHALE: Dark grey to black, fissile, slightly calcareous

SHALE: Black to brownish-black, dark grey, fissile, non-calcareous

SILTSTONE TO SANDSTONE: Tan to greenish-grey, purplish-red to brown, dolomitic, argillaceous

SHALE: As above. Black to brownish-black, fissile, non-calcareous

SHALE TO ARGILLACEOUS DOLOMITE: Red to brownish-red, slightly silty, dolomitic

DOLOMITE/LIMESTONE: Light grey to buff, fossiliferous, argillaceous

CONTOURED HORIZON

COMPOSITE TYPE SECTION
 SHOWING GENERALIZED STRATIGRAPHIC COLUMN

Figure 9
STRUCTURE CONTOUR MAP
MIDDLE BAKKEN MEMBER
SOUTHWESTERN MANITOBA

1:250,000
 5 0 5 10 km

Not to be reproduced in any manner whatsoever without the written permission of the Director of the Petroleum Division.

DATE: DECEMBER 31, 1987
 GEOLOGY: C. MARTINIUK
 CARTOGRAPHY: M. MCFARLANE

Manitoba Energy and Mines
 Petroleum

- | | | |
|--|--|---|
| <p>WELL STATUS INFORMATION</p> <ul style="list-style-type: none"> ○ Standing ● Producer ◆ Abandoned producer ⊕ Dry and abandoned ⊖ Water injection well ⊙ Salt water disposal ⊕ Abandoned salt water disposal ⊕ Dual completion ⊕ Abandoned dual completion ⊕ Water supply well ⊕ Abandoned water supply well ⊕ Abandoned structure test hole | <p>TOPOGRAPHICAL INFORMATION</p> <ul style="list-style-type: none"> — Provincial trunk highway — Provincial regional road — Railway — Underground pipeline — Power transmission line — Park or Indian Reserve boundary — Oil field boundary — Built up area, other localities | <p>GEOLOGICAL INFORMATION</p> <ul style="list-style-type: none"> — Structure contour (25m interval) — Elevation above/below sea level — Lines of cross-section — Supplementary well control projected to the lines of cross-section — Lyleton Formation partly eroded — Nisku Formation partly eroded — Dupre Formation partly eroded — NP Not penetrated — Core examined — Bakken Formation absent — Hartney area (Twp 5 Rge 24) - structurally complex. Contours not shown — f - Bakken absent due to faulting |
|--|--|---|
- Only wells drilled to the Bakken Formation and deeper are shown.