

CROMER UNIT NO. 2
WATERFLOOD EOR PROJECT
ANNUAL REPORT FOR 2016

July 31, 2017

Tundra Oil and Gas Partnership

Table of Contents

INTRODUCTION	3
DISCUSSION	4
Production History	4
Waterflood Development Plan	5
Waterflood EOR Operating Strategy and Performance	6
Water Source and Quality	6
Injection Wellhead Pressures.....	6
Reservoir Pressure	6
Well Servicing	6
Voidage Replacement.....	6
Waterflood Performance Discussion	6
List of Appendices.....	7
Appendix A: Well Name and Well Status	
Appendix B: Production/Injection Rates, Cumulative and VRR Plots and Tables	

Cromer Unit No. 2 Enhanced Oil Recovery (EOR) Waterflood Project was approved on June 30, 2016 with Tundra Oil and Gas as Operator. The EOR project area, outlined in purple in the attached Figure 1, contains 26 wells in 38 LSDs in Township 9, Range 28W1. Well list and well status is available in Appendix A.

R28W1

Cromer Unit #2

T9

T9

R28W1

Map Title: Cromer Unit #2

Scale: 1 inch = 1 mile

Legend:

- Orange dots: Well locations
- Black lines: Structural features
- Orange outline: Cromer Unit #2

© 2014, All rights reserved. This map is for informational purposes only. It is not a warranty or representation of any kind. It is not to be used for any purpose other than that for which it was prepared. The user assumes all liability for any use of this map.

3

DISCUSSION

Production History

For the wells included in Cromer No 2, production started in September 1954 with 00/12-14-009-28W1/0. Oil production peaked at 31.59 m³/d in July of 1955. The water oil ratio (WOR) averaged 5.00 m³/m³ over 2016. In December 2016, the Unit was producing 3.43 m³/d of oil and 20.08 m³/d of water. The oil production rate, injection rate, and WOR during each month for each injection pattern and for whole project are presented in Appendix B. The rates and WOR are presented in Figure 2.

Figure 2: Cromer Unit No.2 Production/Injection Rates and WOR vs Time

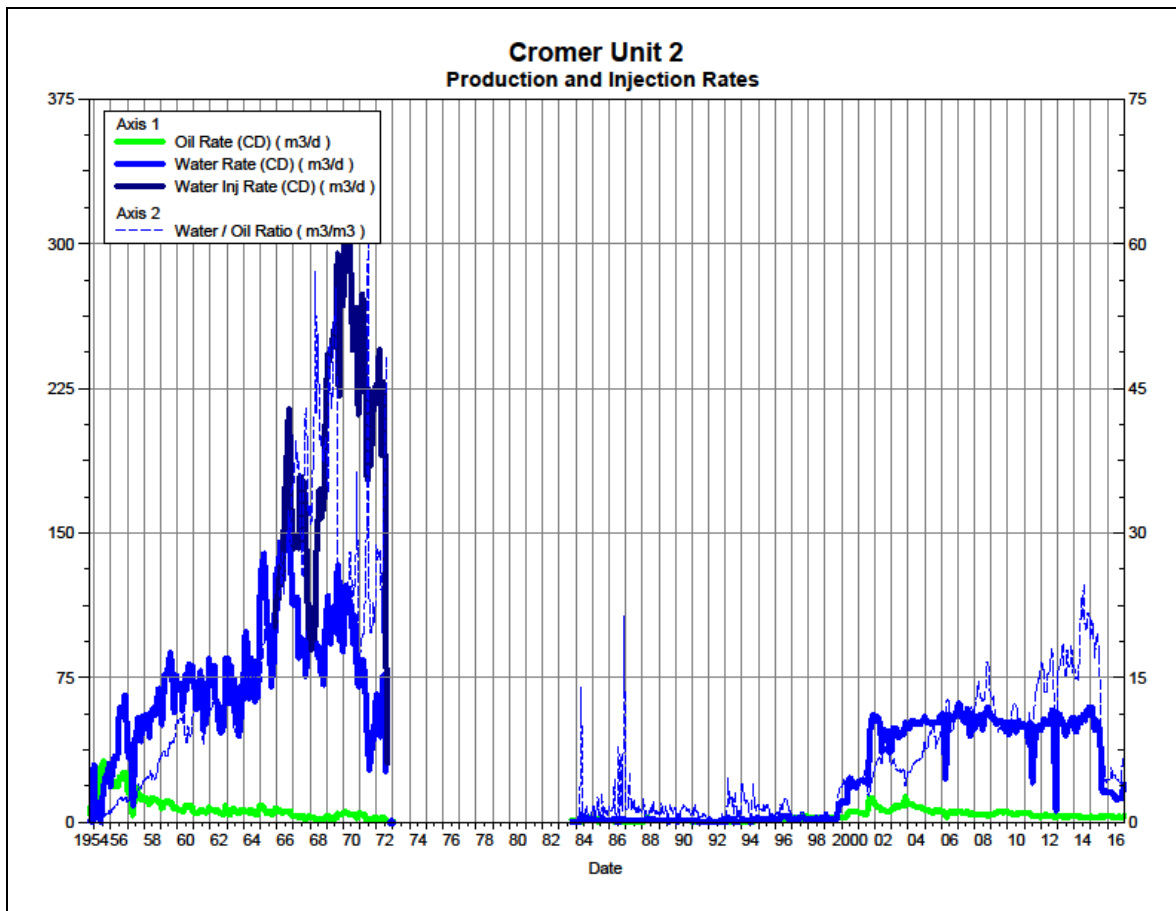
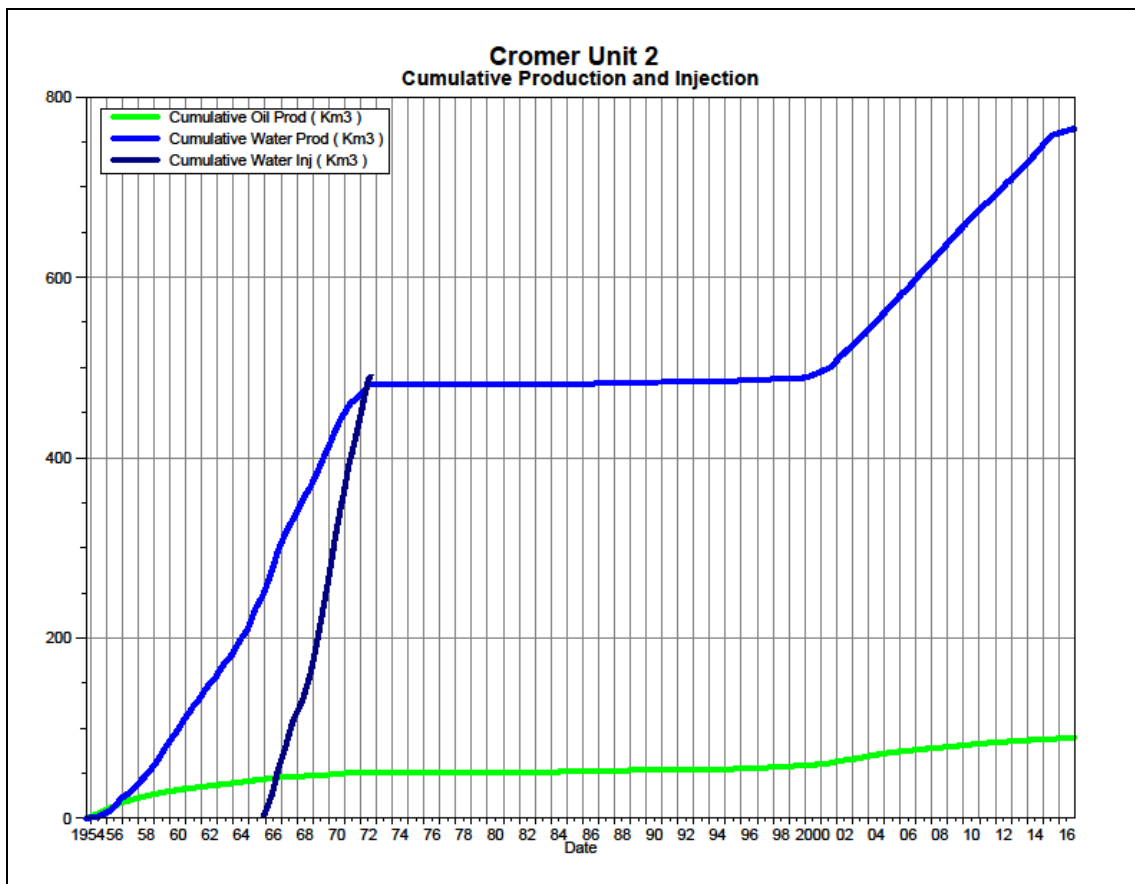


Figure 3 shows the cumulative production for Cromer Unit No. 1 to the end of December 2016 as 89.83 e³m³ of oil, and 765.23 e³m³ of water. The cumulative water injected, as disposal water, is 489.88 e³m³. The cumulative volume of oil, and water produced and fluid injected for each injection pattern is presented in Appendix B.

Figure 3: Cromer Unit No. 2 Cumulative Oil, Water and Water Injected vs. Time



Waterflood Development Plan

Water disposal into the Lodgepole started in November 1965 in the 00/15-11-009-28W1/0 well, followed by the 00/12-14-009-28 in August 1969. In August 1972, water disposal into the Cromer Unit 2 was suspended.

Tundra no longer wants to use produced water for injection in this Unit, so they are currently evaluating a new source of water. Tundra is also working on re-starting the water injection as a waterflood, instead of as disposal, in this Unit. It is anticipated that additional wells will be drilled or current wells re-configured to inject water in this Unit in the near future.

Any future revisions to the waterflood development or surveillance plan would be based on new production or performance response data, technical studies, or observed reservoir behavior and reserves recovery interpretations.

Waterflood EOR Operating Strategy and Performance

Water Source and Quality

There is currently no injection in Cromer Unit No. 2.

Injection Wellhead Pressures

There is no injection wellhead pressures recorded in Cromer Unit No. 2

Reservoir Pressure

No reservoir pressure measurements were taken at Cromer Unit No. 2 in 2016.

Well Servicing

No well servicing was performed on the Cromer Unit No 2 wells

Voidage Replacement

Cumulative voidage for the Cromer Unit No. 1 was 0.569 in December 2016. The cumulative injection of the Unit is attributed to the past water disposal into the Lodgepole. Calculation, plots and tables of the Voidage replacement ratio on a monthly and cumulative basis for each injection pattern are presented in Appendix B.

Waterflood Performance Discussion

Given an OOIP of 7,764 e³m³, the current recovery factor is 1.2%. The ultimate expected recoverable reserve based on decline analysis is 107 e³m³ or an ultimate recovery factor of 1.4%.

The overall performance of this Unit has been poor as indicated by the low recovery factor, and obvious lack of pressure support in producers. This is surely due to having only two wells for water injection/disposal, on which there isn't a certainty of the disposal water providing direct oil sweep to the surrounding producers. Multiple injectors are required in patterns to provide the necessary areal sweep and injected water volumes.

The Unit will require additional water injector wells in addition to increased fluid handling throughput in order to make this an effective waterflood.

List of Appendices

Appendix A: Well Name and Well Status

Appendix B: Unit Production/Injection Rates, Cumulative and VRR Plots
and Tables

Appendix A

UWI	Well Status
100/09-11-009-28W1/0	Abandoned
100/15-11-009-28W1/0	Abandoned
100/16-11-009-28W1/0	Abandoned
100/14-13-009-28W1/0	Suspended
100/02-14-009-28W1/0	Abandoned
100/03-14-009-28W1/0	Abandoned
100/05-14-009-28W1/0	Abandoned
100/06-14-009-28W1/0	Abandoned
102/06-14-009-28W1/0	Capable of Oil Prod
100/10-14-009-28W1/2	Capable of Oil Prod
100/12-14-009-28W1/0	Suspended
100/13-14-009-28W1/2	Abandoned
100/14-14-009-28W1/2	Capable of Oil Prod
100/02-23-009-28W1/0	Capable of Oil Prod
100/03-23-009-28W1/2	Capable of Oil Prod
100/04-23-009-28W1/0	Abandoned
100/04-23-009-28W1/2	Capable of Oil Prod
100/05-23-009-28W1/2	Abandoned
100/06-23-009-28W1/0	Capable of Oil Prod
100/07-23-009-28W1/0	Capable of Oil Prod
100/10-23-009-28W1/0	Capable of Oil Prod
100/11-23-009-28W1/2	Capable of Oil Prod
100/12-23-009-28W1/2	Capable of Oil Prod
100/13-23-009-28W1/2	Capable of Oil Prod
100/14-23-009-28W1/2	Capable of Oil Prod
100/15-23-009-28W1/0	Capable of Oil Prod

Pattern: CU#2 Set: CromerUnit#2

Oil Formation Vol Factor : 1.07100 m3/m3

Water Formation Vol Factor : 1.00150 m3/m3

Water / Oil Ratio : 12.72 m3/m3

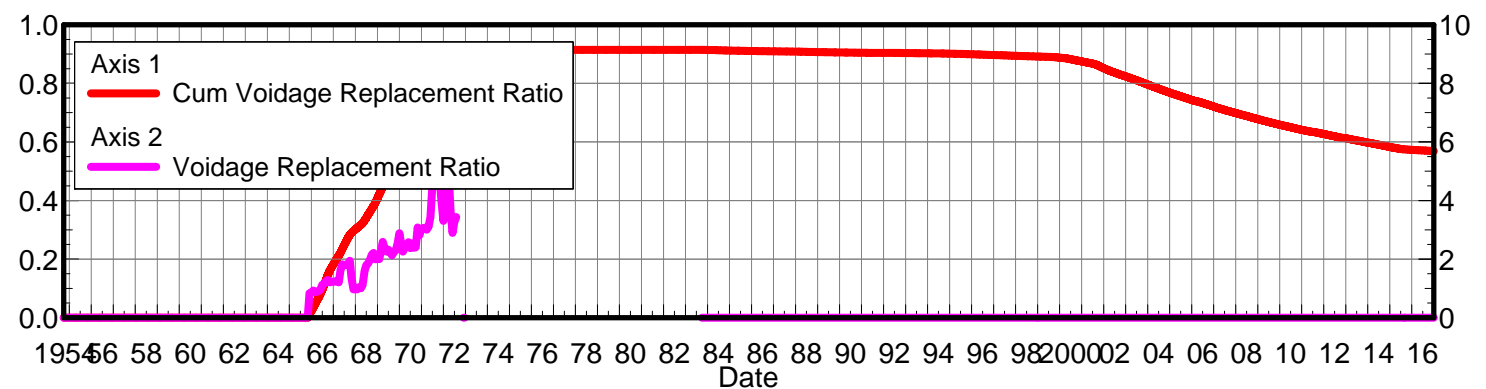
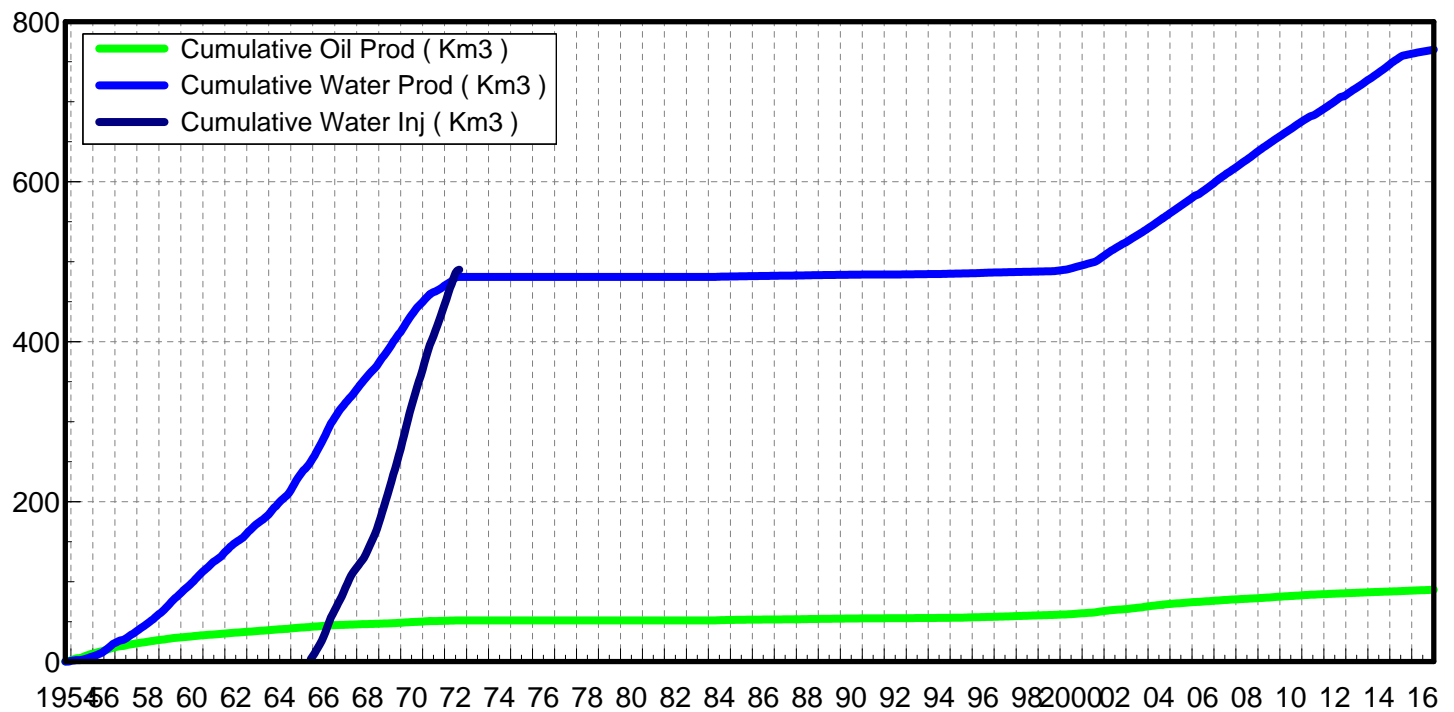
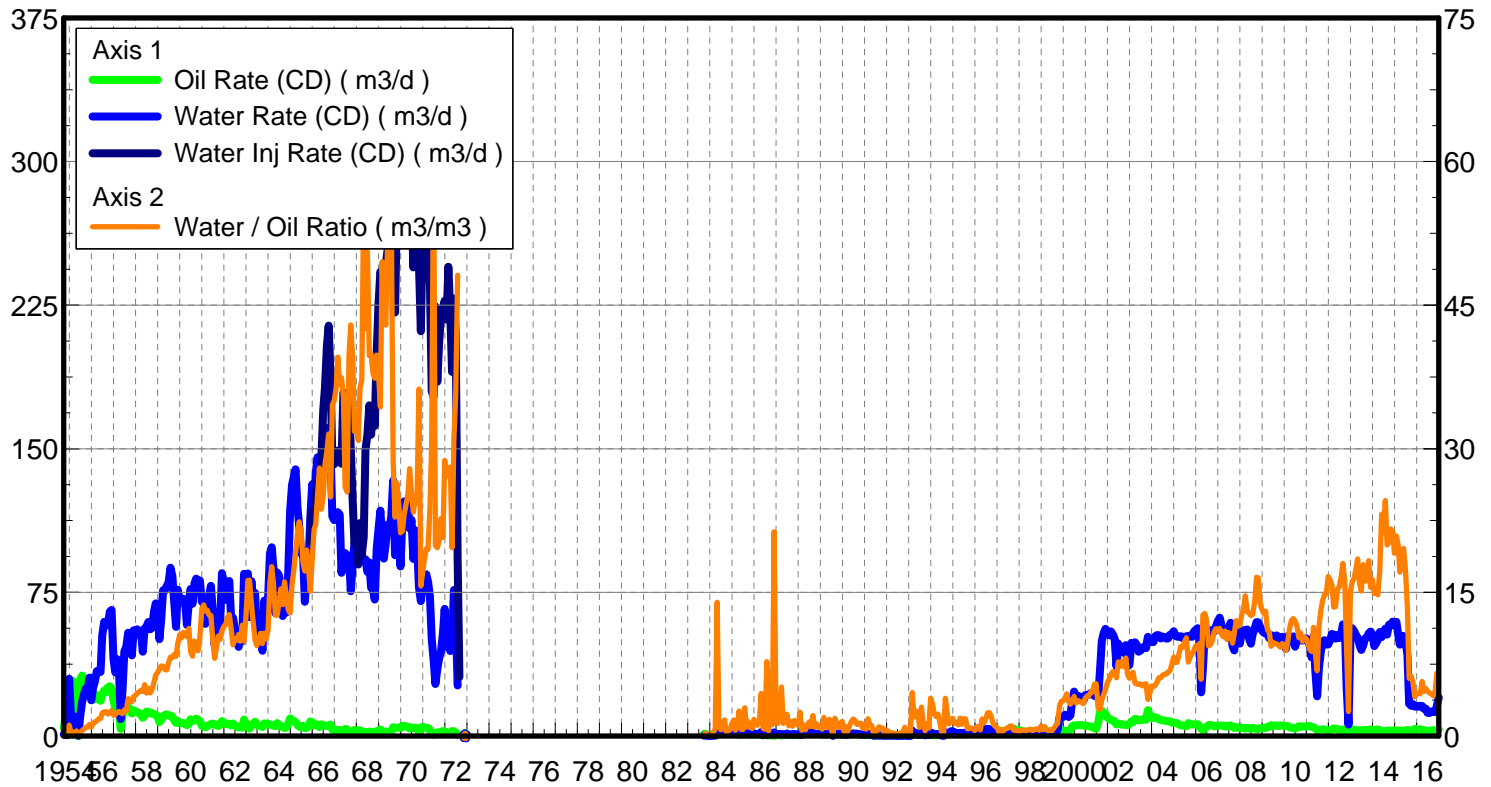
July 31, 2017

Operator: <Ambiguous>

Oil Rate (CD) : 4.76 m3/d

Water Rate (CD) : 49.08 m3/d

Water Inj Rate (CD) : 30.88 m3/d



Date	Oil Rate (CD) m3/d	Water Rate (CD) m3/d	Water Oil Ratio m3/m3	Water Inj Rate (CD) m3/d	Cum Oil Prod Km3	Cum Water Prod Km3	Cum Water Inj Km3	Voidage Replacement Ratio	Cum Voidage Replacement Ratio
9/30/1954	4.16	0.91	0.22		0.12	0.03	0.00	0.000	0.000
10/31/1954	9.73	0.59	0.06		0.43	0.05	0.00	0.000	0.000
11/30/1954	14.76	0.41	0.03		0.87	0.06	0.00	0.000	0.000
12/31/1954	26.56	29.90	1.13		1.69	0.98	0.00	0.000	0.000
1/31/1955	26.26	9.28	0.35		2.51	1.27	0.00	0.000	0.000
2/28/1955	28.76	8.55	0.30		3.31	1.51	0.00	0.000	0.000
3/31/1955	26.01	10.12	0.39		4.12	1.83	0.00	0.000	0.000
4/30/1955	4.42	2.32	0.52		4.25	1.90	0.00	0.000	0.000
5/31/1955	0.00	0.11			4.25	1.90	0.00	0.000	0.000
6/30/1955	29.57	10.37	0.35		5.14	2.21	0.00	0.000	0.000
7/31/1955	31.59	17.87	0.57		6.12	2.76	0.00	0.000	0.000
8/31/1955	30.24	21.58	0.71		7.05	3.43	0.00	0.000	0.000
9/30/1955	27.50	24.81	0.90		7.88	4.18	0.00	0.000	0.000
10/31/1955	25.61	23.94	0.93		8.67	4.92	0.00	0.000	0.000
11/30/1955	25.19	30.50	1.21		9.43	5.83	0.00	0.000	0.000
12/31/1955	19.82	18.56	0.94		10.04	6.41	0.00	0.000	0.000
1/31/1956	18.85	25.34	1.34		10.63	7.19	0.00	0.000	0.000
2/29/1956	19.86	28.55	1.44		11.20	8.02	0.00	0.000	0.000
3/31/1956	21.33	33.91	1.59		11.86	9.07	0.00	0.000	0.000
4/30/1956	19.09	33.64	1.76		12.44	10.08	0.00	0.000	0.000
5/31/1956	18.34	33.41	1.82		13.01	11.12	0.00	0.000	0.000
6/30/1956	21.85	52.66	2.41		13.66	12.70	0.00	0.000	0.000
7/31/1956	23.75	59.65	2.51		14.40	14.55	0.00	0.000	0.000
8/31/1956	22.84	57.72	2.53		15.11	16.34	0.00	0.000	0.000
9/30/1956	25.39	57.86	2.28		15.87	18.07	0.00	0.000	0.000
10/31/1956	25.98	64.90	2.50		16.67	20.08	0.00	0.000	0.000
11/30/1956	24.85	65.82	2.65		17.42	22.06	0.00	0.000	0.000
12/31/1956	18.55	40.32	2.17		17.99	23.31	0.00	0.000	0.000
1/31/1957	14.89	33.23	2.23		18.46	24.34	0.00	0.000	0.000
2/28/1957	16.48	40.15	2.44		18.92	25.46	0.00	0.000	0.000
3/31/1957	13.76	35.43	2.57		19.34	26.56	0.00	0.000	0.000
4/30/1957	3.62	8.80	2.43		19.45	26.83	0.00	0.000	0.000
5/31/1957	10.56	24.62	2.33		19.78	27.59	0.00	0.000	0.000
6/30/1957	16.28	44.14	2.71		20.27	28.91	0.00	0.000	0.000
7/31/1957	17.76	46.60	2.62		20.82	30.36	0.00	0.000	0.000
8/31/1957	13.81	53.94	3.91		21.25	32.03	0.00	0.000	0.000
9/30/1957	14.10	52.83	3.75		21.67	33.61	0.00	0.000	0.000
10/31/1957	11.78	42.09	3.57		22.03	34.92	0.00	0.000	0.000
11/30/1957	13.41	55.20	4.12		22.44	36.58	0.00	0.000	0.000
12/31/1957	12.38	52.73	4.26		22.82	38.21	0.00	0.000	0.000
1/31/1958	12.47	55.70	4.47		23.21	39.94	0.00	0.000	0.000
2/28/1958	11.88	54.97	4.63		23.54	41.48	0.00	0.000	0.000
3/31/1958	11.43	54.34	4.76		23.89	43.16	0.00	0.000	0.000
4/30/1958	9.49	43.98	4.63		24.18	44.48	0.00	0.000	0.000
5/31/1958	10.50	56.23	5.35		24.50	46.22	0.00	0.000	0.000
6/30/1958	12.78	57.05	4.46		24.89	47.93	0.00	0.000	0.000
7/31/1958	11.97	59.54	4.97		25.26	49.78	0.00	0.000	0.000
8/31/1958	12.36	55.68	4.50		25.64	51.51	0.00	0.000	0.000
9/30/1958	11.62	56.42	4.86		25.99	53.20	0.00	0.000	0.000
10/31/1958	11.57	64.74	5.59		26.35	55.20	0.00	0.000	0.000
11/30/1958	10.87	69.27	6.37		26.67	57.28	0.00	0.000	0.000
12/31/1958	10.16	67.31	6.63		26.99	59.37	0.00	0.000	0.000
1/31/1959	7.25	50.56	6.97		27.21	60.94	0.00	0.000	0.000
2/28/1959	8.27	60.46	7.31		27.45	62.63	0.00	0.000	0.000

Date	Oil Rate (CD) m3/d	Water Rate (CD) m3/d	Water Oil Ratio m3/m3	Water Inj Rate (CD) m3/d	Cum Oil Prod Km3	Cum Water Prod Km3	Cum Water Inj Km3	Voidage Replacement Ratio	Cum Voidage Replacement Ratio
3/31/1959	10.44	76.07	7.29		27.77	64.99	0.00	0.000	0.000
4/30/1959	10.93	75.89	6.94		28.10	67.27	0.00	0.000	0.000
5/31/1959	11.36	78.32	6.89		28.45	69.69	0.00	0.000	0.000
6/30/1959	10.46	79.94	7.65		28.76	72.09	0.00	0.000	0.000
7/31/1959	10.67	87.88	8.24		29.09	74.82	0.00	0.000	0.000
8/31/1959	10.23	83.51	8.16		29.41	77.40	0.00	0.000	0.000
9/30/1959	8.29	70.56	8.51		29.66	79.52	0.00	0.000	0.000
10/31/1959	6.85	56.96	8.31		29.87	81.29	0.00	0.000	0.000
11/30/1959	7.89	76.36	9.67		30.11	83.58	0.00	0.000	0.000
12/31/1959	6.71	70.93	10.58		30.32	85.78	0.00	0.000	0.000
1/31/1960	6.81	69.78	10.24		30.53	87.94	0.00	0.000	0.000
2/29/1960	6.62	71.69	10.82		30.72	90.02	0.00	0.000	0.000
3/31/1960	6.54	70.09	10.71		30.92	92.19	0.00	0.000	0.000
4/30/1960	5.59	57.93	10.36		31.09	93.93	0.00	0.000	0.000
5/31/1960	6.24	70.02	11.22		31.28	96.10	0.00	0.000	0.000
6/30/1960	8.71	76.76	8.81		31.55	98.40	0.00	0.000	0.000
7/31/1960	8.29	69.06	8.33		31.80	100.54	0.00	0.000	0.000
8/31/1960	8.02	79.60	9.93		32.05	103.01	0.00	0.000	0.000
9/30/1960	9.10	82.16	9.03		32.32	105.48	0.00	0.000	0.000
10/31/1960	8.48	75.55	8.90		32.59	107.82	0.00	0.000	0.000
11/30/1960	7.85	81.22	10.35		32.82	110.25	0.00	0.000	0.000
12/31/1960	5.28	70.20	13.30		32.99	112.43	0.00	0.000	0.000
1/31/1961	5.08	69.56	13.69		33.14	114.59	0.00	0.000	0.000
2/28/1961	4.49	58.58	13.05		33.27	116.23	0.00	0.000	0.000
3/31/1961	5.16	67.85	13.14		33.43	118.33	0.00	0.000	0.000
4/30/1961	5.77	72.99	12.65		33.60	120.52	0.00	0.000	0.000
5/31/1961	6.23	78.44	12.60		33.80	122.95	0.00	0.000	0.000
6/30/1961	6.47	65.77	10.17		33.99	124.93	0.00	0.000	0.000
7/31/1961	5.85	47.52	8.12		34.17	126.40	0.00	0.000	0.000
8/31/1961	6.02	55.48	9.22		34.36	128.12	0.00	0.000	0.000
9/30/1961	5.11	53.38	10.44		34.51	129.72	0.00	0.000	0.000
10/31/1961	5.95	59.91	10.08		34.70	131.58	0.00	0.000	0.000
11/30/1961	7.72	85.02	11.02		34.93	134.13	0.00	0.000	0.000
12/31/1961	7.04	80.46	11.44		35.15	136.62	0.00	0.000	0.000
1/31/1962	6.10	71.13	11.65		35.33	138.83	0.00	0.000	0.000
2/28/1962	6.28	77.64	12.37		35.51	141.00	0.00	0.000	0.000
3/31/1962	6.39	80.96	12.67		35.71	143.51	0.00	0.000	0.000
4/30/1962	5.49	61.91	11.27		35.87	145.37	0.00	0.000	0.000
5/31/1962	6.49	61.82	9.52		36.07	147.28	0.00	0.000	0.000
6/30/1962	5.53	56.25	10.17		36.24	148.97	0.00	0.000	0.000
7/31/1962	5.09	50.78	9.98		36.40	150.55	0.00	0.000	0.000
8/31/1962	4.39	46.52	10.60		36.53	151.99	0.00	0.000	0.000
9/30/1962	5.15	51.00	9.90		36.69	153.52	0.00	0.000	0.000
10/31/1962	4.28	49.55	11.58		36.82	155.05	0.00	0.000	0.000
11/30/1962	8.56	84.71	9.90		37.08	157.60	0.00	0.000	0.000
12/31/1962	6.37	79.41	12.46		37.28	160.06	0.00	0.000	0.000
1/31/1963	5.22	84.83	16.25		37.44	162.69	0.00	0.000	0.000
2/28/1963	3.81	62.07	16.27		37.54	164.42	0.00	0.000	0.000
3/31/1963	5.84	80.93	13.85		37.73	166.93	0.00	0.000	0.000
4/30/1963	5.96	71.02	11.92		37.90	169.06	0.00	0.000	0.000
5/31/1963	7.45	74.68	10.02		38.14	171.38	0.00	0.000	0.000
6/30/1963	5.76	54.31	9.43		38.31	173.01	0.00	0.000	0.000
7/31/1963	5.26	51.69	9.83		38.47	174.61	0.00	0.000	0.000
8/31/1963	5.31	56.90	10.72		38.64	176.37	0.00	0.000	0.000

Date	Oil Rate (CD) m3/d	Water Rate (CD) m3/d	Water Oil Ratio m3/m3	Water Inj Rate (CD) m3/d	Cum Oil Prod Km3	Cum Water Prod Km3	Cum Water Inj Km3	Voidage Replacement Ratio	Cum Voidage Replacement Ratio
9/30/1963	4.62	44.53	9.63		38.77	177.71	0.00	0.000	0.000
10/31/1963	6.59	70.71	10.74		38.98	179.90	0.00	0.000	0.000
11/30/1963	5.95	60.42	10.16		39.16	181.72	0.00	0.000	0.000
12/31/1963	6.47	71.35	11.03		39.36	183.93	0.00	0.000	0.000
1/31/1964	5.96	95.36	16.00		39.54	186.88	0.00	0.000	0.000
2/29/1964	5.57	98.57	17.69		39.70	189.74	0.00	0.000	0.000
3/31/1964	5.50	87.42	15.89		39.87	192.45	0.00	0.000	0.000
4/30/1964	5.08	64.12	12.61		40.03	194.38	0.00	0.000	0.000
5/31/1964	6.77	85.41	12.61		40.24	197.02	0.00	0.000	0.000
6/30/1964	5.99	83.79	13.99		40.42	199.54	0.00	0.000	0.000
7/31/1964	5.05	77.53	15.37		40.57	201.94	0.00	0.000	0.000
8/31/1964	4.57	62.66	13.72		40.71	203.88	0.00	0.000	0.000
9/30/1964	4.16	66.93	16.10		40.84	205.89	0.00	0.000	0.000
10/31/1964	4.44	64.49	14.52		40.98	207.89	0.00	0.000	0.000
11/30/1964	6.43	84.79	13.19		41.17	210.43	0.00	0.000	0.000
12/31/1964	9.13	117.26	12.84		41.45	214.07	0.00	0.000	0.000
1/31/1965	8.31	131.22	15.79		41.71	218.14	0.00	0.000	0.000
2/28/1965	7.86	134.96	17.18		41.93	221.91	0.00	0.000	0.000
3/31/1965	7.29	139.24	19.09		42.16	226.23	0.00	0.000	0.000
4/30/1965	5.63	119.30	21.18		42.33	229.81	0.00	0.000	0.000
5/31/1965	4.89	109.40	22.37		42.48	233.20	0.00	0.000	0.000
6/30/1965	4.47	95.23	21.29		42.61	236.06	0.00	0.000	0.000
7/31/1965	5.31	96.62	18.20		42.78	239.05	0.00	0.000	0.000
8/31/1965	4.07	70.10	17.22		42.90	241.23	0.00	0.000	0.000
9/30/1965	4.24	82.29	19.42		43.03	243.70	0.00	0.000	0.000
10/31/1965	5.08	89.12	17.54		43.19	246.46	0.00	0.000	0.000
11/30/1965	7.54	113.94	15.11	101.39	43.41	249.88	3.04	0.831	0.010
12/31/1965	7.15	131.41	18.39	117.54	43.63	253.95	6.69	0.845	0.022
1/31/1966	5.50	118.62	21.57	115.11	43.81	257.63	10.25	0.925	0.034
2/28/1966	6.19	136.81	22.09	126.61	43.98	261.46	13.80	0.883	0.045
3/31/1966	5.76	145.65	25.28	132.81	44.16	265.97	17.92	0.875	0.057
4/30/1966	4.66	130.39	27.98	123.10	44.30	269.88	21.61	0.909	0.068
5/31/1966	6.09	144.30	23.69	144.17	44.49	274.36	26.08	0.956	0.081
6/30/1966	5.80	144.96	25.01	170.17	44.66	278.71	31.18	1.126	0.096
7/31/1966	5.35	151.67	28.36	182.07	44.83	283.41	36.83	1.157	0.111
8/31/1966	5.33	158.65	29.77	203.82	44.99	288.33	43.15	1.240	0.128
9/30/1966	5.11	161.09	31.55	214.27	45.14	293.16	49.57	1.287	0.145
10/31/1966	5.95	148.44	24.95	186.78	45.33	297.76	55.36	1.207	0.160
11/30/1966	3.31	114.51	34.59	144.55	45.43	301.20	59.70	1.225	0.171
12/31/1966	3.22	112.72	35.05	141.97	45.53	304.69	64.10	1.222	0.181
1/31/1967	3.15	114.61	36.40	146.52	45.63	308.24	68.64	1.242	0.192
2/28/1967	2.95	116.85	39.56	149.00	45.71	311.52	72.82	1.242	0.202
3/31/1967	3.15	115.62	36.72	143.39	45.81	315.10	77.26	1.205	0.212
4/30/1967	2.28	85.21	37.43	142.16	45.87	317.66	81.53	1.622	0.222
5/31/1967	2.70	95.68	35.48	179.45	45.96	320.62	87.09	1.821	0.236
6/30/1967	3.67	95.49	26.00	177.95	46.07	323.49	92.43	1.790	0.248
7/31/1967	3.47	88.37	25.48	166.44	46.17	326.23	97.59	1.808	0.260
8/31/1967	2.37	94.13	39.75	176.32	46.25	329.14	103.05	1.824	0.272
9/30/1967	1.76	75.58	42.94	150.37	46.30	331.41	107.56	1.941	0.282
10/31/1967	2.26	89.22	39.45	122.76	46.37	334.18	111.37	1.340	0.290
11/30/1967	3.18	101.16	31.81	100.93	46.47	337.21	114.40	0.965	0.296
12/31/1967	3.05	99.92	32.74	100.14	46.56	340.31	117.50	0.970	0.301
1/31/1968	2.91	89.80	30.86	89.57	46.65	343.09	120.28	0.964	0.306
2/29/1968	2.87	104.38	36.38	111.21	46.73	346.12	123.50	1.035	0.312

Date	Oil Rate (CD) m3/d	Water Rate (CD) m3/d	Water Oil Ratio m3/m3	Water Inj Rate (CD) m3/d	Cum Oil Prod Km3	Cum Water Prod Km3	Cum Water Inj Km3	Voidage Replacement Ratio	Cum Voidage Replacement Ratio
3/31/1968	2.47	91.88	37.19	94.56	46.81	348.97	126.44	1.000	0.317
4/30/1968	1.60	91.51	57.08	103.90	46.86	351.71	129.55	1.114	0.322
5/31/1968	2.17	92.33	42.53	149.51	46.93	354.58	134.19	1.580	0.332
6/30/1968	1.69	85.67	50.59	157.18	46.98	357.15	138.90	1.797	0.341
7/31/1968	2.28	90.62	39.74	172.70	47.05	359.96	144.26	1.856	0.352
8/31/1968	1.94	77.41	39.93	157.35	47.11	362.36	149.13	1.980	0.361
9/30/1968	2.02	76.61	37.86	170.02	47.17	364.65	154.23	2.158	0.372
10/31/1968	1.91	71.24	37.37	161.91	47.23	366.86	159.25	2.209	0.382
11/30/1968	2.45	97.63	39.79	199.76	47.30	369.79	165.25	1.993	0.393
12/31/1968	2.83	107.59	38.03	225.03	47.39	373.13	172.22	2.034	0.406
1/31/1969	3.42	117.66	34.38	242.50	47.50	376.77	179.74	1.999	0.420
2/28/1969	2.10	104.01	49.53	239.01	47.55	379.69	186.43	2.249	0.433
3/31/1969	2.08	92.67	44.47	245.36	47.62	382.56	194.04	2.585	0.448
4/30/1969	2.35	100.84	42.91	246.14	47.69	385.58	201.42	2.382	0.461
5/31/1969	2.14	110.33	51.59	253.65	47.76	389.01	209.29	2.252	0.476
6/30/1969	2.09	108.00	51.59	256.17	47.82	392.25	216.97	2.324	0.489
7/31/1969	2.07	114.51	55.38	260.28	47.88	395.79	225.04	2.230	0.503
8/31/1969	4.64	133.42	28.76	294.73	48.03	399.93	234.18	2.130	0.519
9/30/1969	4.13	94.40	22.86	221.13	48.15	402.76	240.81	2.238	0.530
10/31/1969	4.35	114.80	26.42	273.78	48.28	406.32	249.30	2.292	0.544
11/30/1969	4.40	106.01	24.08	278.85	48.42	409.50	257.66	2.518	0.559
12/31/1969	4.17	88.50	21.22	267.85	48.55	412.25	265.97	2.881	0.573
1/31/1970	5.31	113.69	21.43	302.48	48.71	415.77	275.34	2.534	0.589
2/28/1970	5.30	122.59	23.15	289.08	48.86	419.20	283.44	2.254	0.601
3/31/1970	5.02	121.08	24.12	301.53	49.01	422.96	292.79	2.385	0.616
4/30/1970	4.81	121.13	25.20	312.37	49.16	426.59	302.16	2.474	0.631
5/31/1970	3.88	108.37	27.93	290.21	49.28	429.95	311.15	2.579	0.645
6/30/1970	4.45	112.88	25.37	279.26	49.41	433.34	319.53	2.374	0.657
7/31/1970	3.95	92.51	23.39	244.72	49.54	436.20	327.12	2.530	0.669
8/31/1970	4.35	107.42	24.67	267.12	49.67	439.53	335.40	2.383	0.681
9/30/1970	4.14	101.05	24.43	253.60	49.79	442.57	343.01	2.404	0.692
10/31/1970	2.15	77.74	36.24	246.63	49.86	444.97	350.65	3.082	0.704
11/30/1970	4.49	70.43	15.67	211.38	50.00	447.09	356.99	2.810	0.713
12/31/1970	4.72	80.29	17.03	259.40	50.14	449.58	365.03	3.040	0.725
1/31/1971	4.49	83.33	18.56	267.32	50.28	452.16	373.32	3.033	0.738
2/28/1971	4.33	84.46	19.53	273.63	50.40	454.53	380.98	3.071	0.749
3/31/1971	4.14	80.64	19.50	255.20	50.53	457.02	388.89	3.000	0.761
4/30/1971	3.05	72.57	23.82	236.07	50.62	459.20	395.98	3.113	0.771
5/31/1971	1.64	50.72	30.89	179.95	50.67	460.77	401.55	3.429	0.780
6/30/1971	0.64	39.55	61.80	177.22	50.69	461.96	406.87	4.405	0.788
7/31/1971	1.36	27.15	19.90	224.41	50.73	462.80	413.83	7.844	0.800
8/31/1971	1.78	34.94	19.66	184.94	50.79	463.89	419.56	5.020	0.810
9/30/1971	1.99	40.37	20.32	204.78	50.85	465.10	425.70	4.819	0.819
10/31/1971	1.94	44.06	22.73	219.55	50.91	466.46	432.51	4.759	0.830
11/30/1971	2.58	53.56	20.73	223.04	50.99	468.07	439.20	3.960	0.840
12/31/1971	2.31	66.36	28.77	227.34	51.06	470.13	446.25	3.303	0.850
1/31/1972	1.72	46.61	27.16	217.60	51.11	471.57	452.99	4.492	0.861
2/29/1972	1.71	48.02	28.02	245.07	51.16	472.96	460.10	4.916	0.872
3/31/1972	1.58	44.31	28.09	220.89	51.21	474.34	466.95	4.802	0.883
4/30/1972	2.53	49.69	19.66	190.17	51.29	475.83	472.65	3.630	0.891
5/31/1972	2.44	76.28	31.32	228.46	51.36	478.19	479.74	2.896	0.900
6/30/1972	1.77	62.75	35.52	210.51	51.41	480.08	486.05	3.257	0.908
7/31/1972	0.55	26.39	48.12	92.73	51.43	480.89	488.93	3.437	0.912
8/31/1972				30.88	51.43	480.89	489.88		0.914

Date	Oil Rate (CD) m3/d	Water Rate (CD) m3/d	Water Oil Ratio m3/m3	Water Inj Rate (CD) m3/d	Cum Oil Prod Km3	Cum Water Prod Km3	Cum Water Inj Km3	Voidage Replacement Ratio	Cum Voidage Replacement Ratio
9/30/1972					51.43	480.89	489.88		0.914
10/31/1972					51.43	480.89	489.88		0.914
11/30/1972	0.26	0.00	0.00		51.44	480.89	489.88	0.000	0.914
12/31/1972					51.44	480.89	489.88		0.914
1/31/1973					51.44	480.89	489.88		0.914
2/28/1973					51.44	480.89	489.88		0.914
3/31/1973					51.44	480.89	489.88		0.914
4/30/1973					51.44	480.89	489.88		0.914
5/31/1973					51.44	480.89	489.88		0.914
6/30/1973					51.44	480.89	489.88		0.914
7/31/1973					51.44	480.89	489.88		0.914
8/31/1973					51.44	480.89	489.88		0.914
9/30/1973					51.44	480.89	489.88		0.914
10/31/1973					51.44	480.89	489.88		0.914
11/30/1973					51.44	480.89	489.88		0.914
12/31/1973					51.44	480.89	489.88		0.914
1/31/1974					51.44	480.89	489.88		0.914
2/28/1974					51.44	480.89	489.88		0.914
3/31/1974					51.44	480.89	489.88		0.914
4/30/1974					51.44	480.89	489.88		0.914
5/31/1974					51.44	480.89	489.88		0.914
6/30/1974					51.44	480.89	489.88		0.914
7/31/1974					51.44	480.89	489.88		0.914
8/31/1974					51.44	480.89	489.88		0.914
9/30/1974					51.44	480.89	489.88		0.914
10/31/1974					51.44	480.89	489.88		0.914
11/30/1974					51.44	480.89	489.88		0.914
12/31/1974					51.44	480.89	489.88		0.914
1/31/1975					51.44	480.89	489.88		0.914
2/28/1975					51.44	480.89	489.88		0.914
3/31/1975					51.44	480.89	489.88		0.914
4/30/1975					51.44	480.89	489.88		0.914
5/31/1975					51.44	480.89	489.88		0.914
6/30/1975					51.44	480.89	489.88		0.914
7/31/1975					51.44	480.89	489.88		0.914
8/31/1975					51.44	480.89	489.88		0.914
9/30/1975					51.44	480.89	489.88		0.914
10/31/1975					51.44	480.89	489.88		0.914
11/30/1975					51.44	480.89	489.88		0.914
12/31/1975					51.44	480.89	489.88		0.914
1/31/1976					51.44	480.89	489.88		0.914
2/29/1976					51.44	480.89	489.88		0.914
3/31/1976					51.44	480.89	489.88		0.914
4/30/1976					51.44	480.89	489.88		0.914
5/31/1976					51.44	480.89	489.88		0.914
6/30/1976					51.44	480.89	489.88		0.914
7/31/1976					51.44	480.89	489.88		0.914
8/31/1976					51.44	480.89	489.88		0.914
9/30/1976					51.44	480.89	489.88		0.914
10/31/1976					51.44	480.89	489.88		0.914
11/30/1976					51.44	480.89	489.88		0.914
12/31/1976					51.44	480.89	489.88		0.914
1/31/1977					51.44	480.89	489.88		0.914
2/28/1977					51.44	480.89	489.88		0.914

Date	Oil Rate (CD) m3/d	Water Rate (CD) m3/d	Water Oil Ratio m3/m3	Water Inj Rate (CD) m3/d	Cum Oil Prod Km3	Cum Water Prod Km3	Cum Water Inj Km3	Voidage Replacement Ratio	Cum Voidage Replacement Ratio
3/31/1977					51.44	480.89	489.88		0.914
4/30/1977					51.44	480.89	489.88		0.914
5/31/1977					51.44	480.89	489.88		0.914
6/30/1977					51.44	480.89	489.88		0.914
7/31/1977					51.44	480.89	489.88		0.914
8/31/1977					51.44	480.89	489.88		0.914
9/30/1977					51.44	480.89	489.88		0.914
10/31/1977					51.44	480.89	489.88		0.914
11/30/1977					51.44	480.89	489.88		0.914
12/31/1977					51.44	480.89	489.88		0.914
1/31/1978					51.44	480.89	489.88		0.914
2/28/1978					51.44	480.89	489.88		0.914
3/31/1978					51.44	480.89	489.88		0.914
4/30/1978					51.44	480.89	489.88		0.914
5/31/1978					51.44	480.89	489.88		0.914
6/30/1978					51.44	480.89	489.88		0.914
7/31/1978					51.44	480.89	489.88		0.914
8/31/1978					51.44	480.89	489.88		0.914
9/30/1978					51.44	480.89	489.88		0.914
10/31/1978					51.44	480.89	489.88		0.914
11/30/1978					51.44	480.89	489.88		0.914
12/31/1978					51.44	480.89	489.88		0.914
1/31/1979					51.44	480.89	489.88		0.914
2/28/1979					51.44	480.89	489.88		0.914
3/31/1979					51.44	480.89	489.88		0.914
4/30/1979					51.44	480.89	489.88		0.914
5/31/1979					51.44	480.89	489.88		0.914
6/30/1979					51.44	480.89	489.88		0.914
7/31/1979					51.44	480.89	489.88		0.914
8/31/1979					51.44	480.89	489.88		0.914
9/30/1979					51.44	480.89	489.88		0.914
10/31/1979					51.44	480.89	489.88		0.914
11/30/1979					51.44	480.89	489.88		0.914
12/31/1979					51.44	480.89	489.88		0.914
1/31/1980					51.44	480.89	489.88		0.914
2/29/1980					51.44	480.89	489.88		0.914
3/31/1980					51.44	480.89	489.88		0.914
4/30/1980					51.44	480.89	489.88		0.914
5/31/1980					51.44	480.89	489.88		0.914
6/30/1980					51.44	480.89	489.88		0.914
7/31/1980					51.44	480.89	489.88		0.914
8/31/1980					51.44	480.89	489.88		0.914
9/30/1980					51.44	480.89	489.88		0.914
10/31/1980					51.44	480.89	489.88		0.914
11/30/1980					51.44	480.89	489.88		0.914
12/31/1980					51.44	480.89	489.88		0.914
1/31/1981					51.44	480.89	489.88		0.914
2/28/1981					51.44	480.89	489.88		0.914
3/31/1981					51.44	480.89	489.88		0.914
4/30/1981					51.44	480.89	489.88		0.914
5/31/1981					51.44	480.89	489.88		0.914
6/30/1981					51.44	480.89	489.88		0.914
7/31/1981					51.44	480.89	489.88		0.914
8/31/1981					51.44	480.89	489.88		0.914

Date	Oil Rate (CD) m3/d	Water Rate (CD) m3/d	Water Oil Ratio m3/m3	Water Inj Rate (CD) m3/d	Cum Oil Prod Km3	Cum Water Prod Km3	Cum Water Inj Km3	Voidage Replacement Ratio	Cum Voidage Replacement Ratio
9/30/1981					51.44	480.89	489.88		0.914
10/31/1981					51.44	480.89	489.88		0.914
11/30/1981					51.44	480.89	489.88		0.914
12/31/1981					51.44	480.89	489.88		0.914
1/31/1982					51.44	480.89	489.88		0.914
2/28/1982					51.44	480.89	489.88		0.914
3/31/1982					51.44	480.89	489.88		0.914
4/30/1982					51.44	480.89	489.88		0.914
5/31/1982					51.44	480.89	489.88		0.914
6/30/1982					51.44	480.89	489.88		0.914
7/31/1982					51.44	480.89	489.88		0.914
8/31/1982					51.44	480.89	489.88		0.914
9/30/1982					51.44	480.89	489.88		0.914
10/31/1982					51.44	480.89	489.88		0.914
11/30/1982					51.44	480.89	489.88		0.914
12/31/1982					51.44	480.89	489.88		0.914
1/31/1983					51.44	480.89	489.88		0.914
2/28/1983					51.44	480.89	489.88		0.914
3/31/1983					51.44	480.89	489.88		0.914
4/30/1983					51.44	480.89	489.88		0.914
5/31/1983					51.44	480.89	489.88		0.914
6/30/1983					51.44	480.89	489.88		0.914
7/31/1983					51.44	480.89	489.88		0.914
8/31/1983					51.44	480.89	489.88		0.914
9/30/1983	1.14	0.14	0.12		51.47	480.90	489.88	0.000	0.914
10/31/1983	0.89	0.26	0.29		51.50	480.91	489.88	0.000	0.914
11/30/1983	0.40	0.01	0.02		51.51	480.91	489.88	0.000	0.914
12/31/1983	0.24	0.00	0.01		51.52	480.91	489.88	0.000	0.914
1/31/1984	0.65	0.02	0.03		51.54	480.91	489.88	0.000	0.914
2/29/1984	0.30	0.11	0.38		51.55	480.91	489.88	0.000	0.914
3/31/1984	0.31	0.22	0.71		51.56	480.92	489.88	0.000	0.914
4/30/1984	0.27	3.82	13.96		51.57	481.03	489.88	0.000	0.914
5/31/1984	3.30	3.74	1.13		51.67	481.15	489.88	0.000	0.913
6/30/1984	2.94	1.89	0.64		51.76	481.20	489.88	0.000	0.913
7/31/1984	2.25	2.02	0.90		51.83	481.27	489.88	0.000	0.913
8/31/1984	1.42	2.37	1.67		51.87	481.34	489.88	0.000	0.913
9/30/1984	3.12	1.14	0.37		51.96	481.37	489.88	0.000	0.912
10/31/1984	1.64	1.00	0.61		52.02	481.41	489.88	0.000	0.912
11/30/1984	1.90	1.17	0.62		52.07	481.44	489.88	0.000	0.912
12/31/1984	1.05	1.35	1.28		52.10	481.48	489.88	0.000	0.912
1/31/1985	0.99	1.67	1.68		52.14	481.53	489.88	0.000	0.912
2/28/1985	1.91	1.15	0.60		52.19	481.57	489.88	0.000	0.912
3/31/1985	1.13	1.45	1.28		52.22	481.61	489.88	0.000	0.911
4/30/1985	0.42	1.11	2.62		52.24	481.64	489.88	0.000	0.911
5/31/1985	1.78	1.24	0.70		52.29	481.68	489.88	0.000	0.911
6/30/1985	1.18	0.79	0.67		52.33	481.71	489.88	0.000	0.911
7/31/1985	0.95	2.81	2.95		52.36	481.79	489.88	0.000	0.911
8/31/1985	0.95	0.86	0.91		52.39	481.82	489.88	0.000	0.911
9/30/1985	0.75	1.11	1.48		52.41	481.85	489.88	0.000	0.911
10/31/1985	1.05	1.17	1.11		52.44	481.89	489.88	0.000	0.911
11/30/1985	0.91	0.70	0.78		52.47	481.91	489.88	0.000	0.911
12/31/1985	0.75	1.30	1.73		52.49	481.95	489.88	0.000	0.910
1/31/1986	0.97	1.13	1.17		52.52	481.99	489.88	0.000	0.910
2/28/1986	0.80	0.90	1.13		52.54	482.01	489.88	0.000	0.910

Date	Oil Rate (CD) m3/d	Water Rate (CD) m3/d	Water Oil Ratio m3/m3	Water Inj Rate (CD) m3/d	Cum Oil Prod Km3	Cum Water Prod Km3	Cum Water Inj Km3	Voidage Replacement Ratio	Cum Voidage Replacement Ratio
3/31/1986	0.81	1.25	1.55		52.57	482.05	489.88	0.000	0.910
4/30/1986	0.47	2.09	4.45		52.58	482.11	489.88	0.000	0.910
5/31/1986	0.51	0.41	0.80		52.60	482.13	489.88	0.000	0.910
6/30/1986	1.09	0.75	0.69		52.63	482.15	489.88	0.000	0.910
7/31/1986	0.19	1.50	7.77		52.64	482.19	489.88	0.000	0.910
8/31/1986	0.97	0.52	0.54		52.67	482.21	489.88	0.000	0.910
9/30/1986	0.25	1.65	6.69		52.68	482.26	489.88	0.000	0.910
10/31/1986	0.75	0.88	1.17		52.70	482.29	489.88	0.000	0.909
11/30/1986	0.09	1.92	21.33		52.70	482.35	489.88	0.000	0.909
12/31/1986	0.69	1.00	1.46		52.72	482.38	489.88	0.000	0.909
1/31/1987	0.72	0.94	1.31		52.74	482.41	489.88	0.000	0.909
2/28/1987	0.60	1.03	1.72		52.76	482.43	489.88	0.000	0.909
3/31/1987	0.19	0.99	5.10		52.77	482.46	489.88	0.000	0.909
4/30/1987	0.77	1.01	1.31		52.79	482.49	489.88	0.000	0.909
5/31/1987	0.56	0.86	1.54		52.81	482.52	489.88	0.000	0.909
6/30/1987	0.51	1.16	2.27		52.82	482.56	489.88	0.000	0.909
7/31/1987	0.76	0.81	1.07		52.85	482.58	489.88	0.000	0.909
8/31/1987	0.60	0.91	1.52		52.87	482.61	489.88	0.000	0.909
9/30/1987	0.56	0.57	1.01		52.88	482.63	489.88	0.000	0.909
10/31/1987	0.65	1.05	1.62		52.90	482.66	489.88	0.000	0.908
11/30/1987	0.62	0.78	1.27		52.92	482.68	489.88	0.000	0.908
12/31/1987	0.61	0.68	1.12		52.94	482.70	489.88	0.000	0.908
1/31/1988	0.38	0.95	2.48		52.95	482.73	489.88	0.000	0.908
2/29/1988	0.81	0.48	0.59		52.98	482.75	489.88	0.000	0.908
3/31/1988	1.15	1.33	1.16		53.01	482.79	489.88	0.000	0.908
4/30/1988	2.55	1.64	0.65		53.09	482.84	489.88	0.000	0.908
5/31/1988	1.59	1.70	1.07		53.14	482.89	489.88	0.000	0.908
6/30/1988	1.29	1.88	1.46		53.18	482.95	489.88	0.000	0.908
7/31/1988	1.83	1.79	0.98		53.23	483.00	489.88	0.000	0.907
8/31/1988	0.80	1.69	2.13		53.26	483.06	489.88	0.000	0.907
9/30/1988	1.13	1.06	0.94		53.29	483.09	489.88	0.000	0.907
10/31/1988	0.98	1.25	1.28		53.32	483.13	489.88	0.000	0.907
11/30/1988	1.10	0.98	0.89		53.35	483.16	489.88	0.000	0.907
12/31/1988	1.05	1.07	1.02		53.39	483.19	489.88	0.000	0.907
1/31/1989	1.18	0.84	0.71		53.42	483.21	489.88	0.000	0.907
2/28/1989	0.66	1.27	1.92		53.44	483.25	489.88	0.000	0.907
3/31/1989	0.82	0.90	1.11		53.47	483.28	489.88	0.000	0.906
4/30/1989	1.02	0.88	0.86		53.50	483.30	489.88	0.000	0.906
5/31/1989	0.87	1.52	1.74		53.52	483.35	489.88	0.000	0.906
6/30/1989	1.21	0.97	0.80		53.56	483.38	489.88	0.000	0.906
7/31/1989	1.18	0.06	0.05		53.60	483.38	489.88	0.000	0.906
8/31/1989	0.69	1.28	1.86		53.62	483.42	489.88	0.000	0.906
9/30/1989	0.84	1.11	1.32		53.64	483.46	489.88	0.000	0.906
10/31/1989	1.02	0.90	0.88		53.68	483.48	489.88	0.000	0.906
11/30/1989	0.89	1.20	1.34		53.70	483.52	489.88	0.000	0.906
12/31/1989	0.55	0.83	1.51		53.72	483.55	489.88	0.000	0.906
1/31/1990	1.22	0.55	0.45		53.76	483.56	489.88	0.000	0.905
2/28/1990	0.85	0.80	0.95		53.78	483.58	489.88	0.000	0.905
3/31/1990	1.20	0.55	0.46		53.82	483.60	489.88	0.000	0.905
4/30/1990	1.06	1.15	1.09		53.85	483.64	489.88	0.000	0.905
5/31/1990	0.73	1.12	1.53		53.87	483.67	489.88	0.000	0.905
6/30/1990	0.65	1.15	1.77		53.89	483.71	489.88	0.000	0.905
7/31/1990	0.76	1.23	1.62		53.92	483.74	489.88	0.000	0.905
8/31/1990	1.03	1.23	1.19		53.95	483.78	489.88	0.000	0.905

Date	Oil Rate (CD) m3/d	Water Rate (CD) m3/d	Water Oil Ratio m3/m3	Water Inj Rate (CD) m3/d	Cum Oil Prod Km3	Cum Water Prod Km3	Cum Water Inj Km3	Voidage Replacement Ratio	Cum Voidage Replacement Ratio
9/30/1990	0.69	0.92	1.33		53.97	483.81	489.88	0.000	0.905
10/31/1990	0.72	0.97	1.35		53.99	483.84	489.88	0.000	0.905
11/30/1990	0.81	0.66	0.82		54.02	483.86	489.88	0.000	0.904
12/31/1990	0.57	0.71	1.23		54.03	483.88	489.88	0.000	0.904
1/31/1991	0.89	0.63	0.71		54.06	483.90	489.88	0.000	0.904
2/28/1991	0.63	1.13	1.79		54.08	483.93	489.88	0.000	0.904
3/31/1991	0.71	0.84	1.18		54.10	483.96	489.88	0.000	0.904
4/30/1991	0.66	0.71	1.07		54.12	483.98	489.88	0.000	0.904
5/31/1991	0.48	0.14	0.30		54.13	483.98	489.88	0.000	0.904
6/30/1991	0.34	0.18	0.53		54.14	483.99	489.88	0.000	0.904
7/31/1991	0.35	0.18	0.53		54.16	483.99	489.88	0.000	0.904
8/31/1991	0.24	0.23	0.96		54.16	484.00	489.88	0.000	0.904
9/30/1991	0.28	0.23	0.81		54.17	484.01	489.88	0.000	0.904
10/31/1991	0.25	0.21	0.82		54.18	484.01	489.88	0.000	0.904
11/30/1991	0.42	0.06	0.14		54.19	484.02	489.88	0.000	0.904
12/31/1991	0.25	0.16	0.62		54.20	484.02	489.88	0.000	0.904
1/31/1992	0.36	0.16	0.44		54.21	484.03	489.88	0.000	0.904
2/29/1992	0.36	0.13	0.36		54.22	484.03	489.88	0.000	0.904
3/31/1992	0.34	0.12	0.35		54.23	484.03	489.88	0.000	0.904
4/30/1992	0.35	0.10	0.27		54.24	484.04	489.88	0.000	0.904
5/31/1992	0.36	0.09	0.26		54.25	484.04	489.88	0.000	0.904
6/30/1992	0.39	0.06	0.14		54.27	484.04	489.88	0.000	0.904
7/31/1992	0.06	0.01	0.20		54.27	484.04	489.88	0.000	0.904
8/31/1992	0.29	0.11	0.38		54.28	484.05	489.88	0.000	0.904
9/30/1992	0.26	0.08	0.32		54.28	484.05	489.88	0.000	0.904
10/31/1992	1.49	1.35	0.90		54.33	484.09	489.88	0.000	0.904
11/30/1992	0.19	0.07	0.34		54.34	484.09	489.88	0.000	0.904
12/31/1992	0.18	0.05	0.26		54.34	484.09	489.88	0.000	0.904
1/31/1993	0.08	0.03	0.33		54.34	484.09	489.88	0.000	0.903
2/28/1993	0.63	2.85	4.53		54.36	484.17	489.88	0.000	0.903
3/31/1993	0.61	1.21	1.97		54.38	484.21	489.88	0.000	0.903
4/30/1993	0.57	1.50	2.62		54.40	484.26	489.88	0.000	0.903
5/31/1993	0.57	1.41	2.49		54.42	484.30	489.88	0.000	0.903
6/30/1993	0.58	0.52	0.89		54.43	484.32	489.88	0.000	0.903
7/31/1993	0.56	1.69	3.02		54.45	484.37	489.88	0.000	0.903
8/31/1993	0.55	0.73	1.34		54.47	484.39	489.88	0.000	0.903
9/30/1993	0.50	0.27	0.54		54.48	484.40	489.88	0.000	0.903
10/31/1993	0.55	0.69	1.27		54.50	484.42	489.88	0.000	0.903
11/30/1993	0.54	0.44	0.81		54.52	484.43	489.88	0.000	0.903
12/31/1993	0.46	1.84	3.95		54.53	484.49	489.88	0.000	0.903
1/31/1994	0.42	1.39	3.31		54.54	484.53	489.88	0.000	0.902
2/28/1994	0.50	1.16	2.31		54.56	484.57	489.88	0.000	0.902
3/31/1994	0.45	0.91	2.04		54.57	484.59	489.88	0.000	0.902
4/30/1994	0.46	1.04	2.28		54.58	484.63	489.88	0.000	0.902
5/31/1994	0.55	0.78	1.44		54.60	484.65	489.88	0.000	0.902
6/30/1994	0.53	0.21	0.41		54.62	484.66	489.88	0.000	0.902
7/31/1994	0.49	0.04	0.07		54.63	484.66	489.88	0.000	0.902
8/31/1994	0.50	1.96	3.93		54.65	484.72	489.88	0.000	0.902
9/30/1994	0.53	1.23	2.33		54.66	484.75	489.88	0.000	0.902
10/31/1994	1.19	1.51	1.27		54.70	484.80	489.88	0.000	0.902
11/30/1994	1.46	2.45	1.68		54.74	484.88	489.88	0.000	0.901
12/31/1994	1.35	2.51	1.85		54.79	484.95	489.88	0.000	0.901
1/31/1995	1.27	1.66	1.31		54.83	485.00	489.88	0.000	0.901
2/28/1995	1.15	1.63	1.42		54.86	485.05	489.88	0.000	0.901

Date	Oil Rate (CD) m3/d	Water Rate (CD) m3/d	Water Oil Ratio m3/m3	Water Inj Rate (CD) m3/d	Cum Oil Prod Km3	Cum Water Prod Km3	Cum Water Inj Km3	Voidage Replacement Ratio	Cum Voidage Replacement Ratio
3/31/1995	1.08	1.26	1.17		54.89	485.09	489.88	0.000	0.901
4/30/1995	0.88	1.64	1.86		54.92	485.14	489.88	0.000	0.901
5/31/1995	0.95	1.15	1.22		54.95	485.17	489.88	0.000	0.901
6/30/1995	0.89	1.60	1.80		54.97	485.22	489.88	0.000	0.901
7/31/1995	0.88	1.57	1.78		55.00	485.27	489.88	0.000	0.900
8/31/1995	2.09	1.55	0.74		55.07	485.32	489.88	0.000	0.900
9/30/1995	2.77	2.21	0.80		55.15	485.39	489.88	0.000	0.900
10/31/1995	2.44	2.08	0.85		55.22	485.45	489.88	0.000	0.900
11/30/1995	2.23	1.70	0.76		55.29	485.50	489.88	0.000	0.899
12/31/1995	2.04	1.16	0.57		55.35	485.54	489.88	0.000	0.899
1/31/1996	1.94	1.85	0.95		55.41	485.59	489.88	0.000	0.899
2/29/1996	2.19	2.23	1.02		55.48	485.66	489.88	0.000	0.899
3/31/1996	1.72	1.07	0.62		55.53	485.69	489.88	0.000	0.899
4/30/1996	2.15	3.81	1.77		55.60	485.81	489.88	0.000	0.898
5/31/1996	1.91	2.60	1.37		55.66	485.89	489.88	0.000	0.898
6/30/1996	1.94	3.53	1.82		55.71	485.99	489.88	0.000	0.898
7/31/1996	1.54	3.75	2.44		55.76	486.11	489.88	0.000	0.898
8/31/1996	1.46	3.54	2.42		55.81	486.22	489.88	0.000	0.897
9/30/1996	1.58	3.08	1.95		55.85	486.31	489.88	0.000	0.897
10/31/1996	1.55	1.90	1.23		55.90	486.37	489.88	0.000	0.897
11/30/1996	1.77	1.78	1.01		55.95	486.42	489.88	0.000	0.897
12/31/1996	1.68	1.54	0.92		56.01	486.47	489.88	0.000	0.897
1/31/1997	2.05	0.92	0.45		56.07	486.50	489.88	0.000	0.896
2/28/1997	2.66	1.83	0.69		56.14	486.55	489.88	0.000	0.896
3/31/1997	2.55	1.18	0.47		56.22	486.59	489.88	0.000	0.896
4/30/1997	2.10	1.27	0.61		56.29	486.63	489.88	0.000	0.896
5/31/1997	1.72	1.36	0.79		56.34	486.67	489.88	0.000	0.896
6/30/1997	2.50	2.05	0.82		56.41	486.73	489.88	0.000	0.895
7/31/1997	2.32	2.39	1.03		56.49	486.80	489.88	0.000	0.895
8/31/1997	2.10	2.20	1.05		56.55	486.87	489.88	0.000	0.895
9/30/1997	3.87	2.46	0.64		56.67	486.95	489.88	0.000	0.895
10/31/1997	3.35	1.88	0.56		56.77	487.00	489.88	0.000	0.894
11/30/1997	2.95	1.78	0.61		56.86	487.06	489.88	0.000	0.894
12/31/1997	2.88	1.12	0.39		56.95	487.09	489.88	0.000	0.894
1/31/1998	2.81	1.58	0.56		57.04	487.14	489.88	0.000	0.894
2/28/1998	2.56	1.57	0.61		57.11	487.19	489.88	0.000	0.894
3/31/1998	2.35	1.42	0.60		57.18	487.23	489.88	0.000	0.893
4/30/1998	2.34	1.24	0.53		57.25	487.27	489.88	0.000	0.893
5/31/1998	2.29	1.51	0.66		57.32	487.31	489.88	0.000	0.893
6/30/1998	2.38	1.68	0.70		57.39	487.36	489.88	0.000	0.893
7/31/1998	2.44	1.43	0.59		57.47	487.41	489.88	0.000	0.893
8/31/1998	2.29	1.35	0.59		57.54	487.45	489.88	0.000	0.892
9/30/1998	2.16	1.57	0.73		57.60	487.50	489.88	0.000	0.892
10/31/1998	2.46	1.85	0.75		57.68	487.55	489.88	0.000	0.892
11/30/1998	2.78	1.66	0.60		57.76	487.60	489.88	0.000	0.892
12/31/1998	2.24	2.35	1.05		57.83	487.68	489.88	0.000	0.891
1/31/1999	2.89	1.90	0.66		57.92	487.74	489.88	0.000	0.891
2/28/1999	2.09	2.05	0.98		57.98	487.79	489.88	0.000	0.891
3/31/1999	2.26	1.51	0.67		58.05	487.84	489.88	0.000	0.891
4/30/1999	2.42	1.26	0.52		58.12	487.88	489.88	0.000	0.891
5/31/1999	2.30	1.47	0.64		58.20	487.92	489.88	0.000	0.890
6/30/1999	2.53	1.38	0.55		58.27	487.96	489.88	0.000	0.890
7/31/1999	2.22	1.82	0.82		58.34	488.02	489.88	0.000	0.890
8/31/1999	1.61	1.76	1.10		58.39	488.08	489.88	0.000	0.890

Date	Oil Rate (CD) m3/d	Water Rate (CD) m3/d	Water Oil Ratio m3/m3	Water Inj Rate (CD) m3/d	Cum Oil Prod Km3	Cum Water Prod Km3	Cum Water Inj Km3	Voidage Replacement Ratio	Cum Voidage Replacement Ratio
9/30/1999	2.40	3.15	1.31		58.46	488.17	489.88	0.000	0.890
10/31/1999	3.14	9.90	3.16		58.56	488.48	489.88	0.000	0.889
11/30/1999	2.55	9.26	3.63		58.64	488.75	489.88	0.000	0.888
12/31/1999	2.78	10.25	3.68		58.72	489.07	489.88	0.000	0.888
1/31/2000	2.82	11.11	3.94		58.81	489.42	489.88	0.000	0.887
2/29/2000	2.43	10.71	4.40		58.88	489.73	489.88	0.000	0.886
3/31/2000	2.74	9.89	3.61		58.97	490.03	489.88	0.000	0.886
4/30/2000	3.24	10.75	3.32		59.06	490.36	489.88	0.000	0.885
5/31/2000	5.13	19.06	3.72		59.22	490.95	489.88	0.000	0.884
6/30/2000	5.60	23.22	4.14		59.39	491.64	489.88	0.000	0.882
7/31/2000	5.60	19.25	3.43		59.56	492.24	489.88	0.000	0.881
8/31/2000	5.66	20.98	3.71		59.74	492.89	489.88	0.000	0.880
9/30/2000	5.65	20.35	3.60		59.91	493.50	489.88	0.000	0.879
10/31/2000	5.71	20.09	3.52		60.09	494.12	489.88	0.000	0.877
11/30/2000	5.49	18.45	3.36		60.25	494.68	489.88	0.000	0.876
12/31/2000	5.38	21.37	3.97		60.42	495.34	489.88	0.000	0.875
1/31/2001	5.09	21.36	4.19		60.57	496.00	489.88	0.000	0.874
2/28/2001	5.16	21.64	4.20		60.72	496.61	489.88	0.000	0.872
3/31/2001	4.90	22.36	4.56		60.87	497.30	489.88	0.000	0.871
4/30/2001	4.73	21.77	4.60		61.01	497.96	489.88	0.000	0.870
5/31/2001	3.88	20.96	5.40		61.13	498.61	489.88	0.000	0.869
6/30/2001	3.84	20.97	5.46		61.25	499.23	489.88	0.000	0.867
7/31/2001	6.77	19.68	2.91		61.46	499.84	489.88	0.000	0.866
8/31/2001	12.46	34.65	2.78		61.84	500.92	489.88	0.000	0.864
9/30/2001	13.15	49.64	3.78		62.24	502.41	489.88	0.000	0.861
10/31/2001	12.35	53.75	4.35		62.62	504.07	489.88	0.000	0.858
11/30/2001	11.58	55.92	4.83		62.97	505.75	489.88	0.000	0.855
12/31/2001	9.65	54.01	5.60		63.27	507.43	489.88	0.000	0.852
1/31/2002	8.80	52.53	5.97		63.54	509.05	489.88	0.000	0.849
2/28/2002	8.50	54.63	6.43		63.78	510.58	489.88	0.000	0.846
3/31/2002	7.90	53.05	6.71		64.02	512.23	489.88	0.000	0.844
4/30/2002	7.79	50.94	6.54		64.26	513.76	489.88	0.000	0.841
5/31/2002	5.97	36.27	6.07		64.44	514.88	489.88	0.000	0.839
6/30/2002	6.23	48.24	7.75		64.63	516.33	489.88	0.000	0.837
7/31/2002	6.30	45.90	7.29		64.82	517.75	489.88	0.000	0.834
8/31/2002	5.83	45.57	7.82		65.01	519.16	489.88	0.000	0.832
9/30/2002	6.02	43.47	7.22		65.19	520.47	489.88	0.000	0.830
10/31/2002	5.83	47.45	8.14		65.37	521.94	489.88	0.000	0.828
11/30/2002	5.64	36.31	6.44		65.54	523.03	489.88	0.000	0.826
12/31/2002	6.17	37.18	6.02		65.73	524.18	489.88	0.000	0.824
1/31/2003	7.68	48.64	6.33		65.96	525.69	489.88	0.000	0.822
2/28/2003	7.25	48.34	6.66		66.17	527.04	489.88	0.000	0.819
3/31/2003	8.86	48.91	5.52		66.44	528.56	489.88	0.000	0.817
4/30/2003	8.80	47.72	5.42		66.71	529.99	489.88	0.000	0.815
5/31/2003	8.16	43.97	5.39		66.96	531.35	489.88	0.000	0.812
6/30/2003	8.19	44.61	5.45		67.21	532.69	489.88	0.000	0.810
7/31/2003	8.75	45.68	5.22		67.48	534.11	489.88	0.000	0.808
8/31/2003	8.62	46.65	5.41		67.74	535.55	489.88	0.000	0.806
9/30/2003	8.40	45.88	5.46		68.00	536.93	489.88	0.000	0.804
10/31/2003	13.54	51.76	3.82		68.42	538.53	489.88	0.000	0.801
11/30/2003	11.18	48.94	4.38		68.75	540.00	489.88	0.000	0.798
12/31/2003	9.58	50.15	5.23		69.05	541.56	489.88	0.000	0.796
1/31/2004	9.50	49.00	5.16		69.34	543.08	489.88	0.000	0.794
2/29/2004	9.84	51.96	5.28		69.63	544.58	489.88	0.000	0.791

Date	Oil Rate (CD) m3/d	Water Rate (CD) m3/d	Water Oil Ratio m3/m3	Water Inj Rate (CD) m3/d	Cum Oil Prod Km3	Cum Water Prod Km3	Cum Water Inj Km3	Voidage Replacement Ratio	Cum Voidage Replacement Ratio
3/31/2004	9.37	52.72	5.63		69.92	546.22	489.88	0.000	0.789
4/30/2004	8.64	52.63	6.09		70.18	547.80	489.88	0.000	0.787
5/31/2004	8.37	50.92	6.08		70.44	549.37	489.88	0.000	0.784
6/30/2004	8.19	51.94	6.34		70.68	550.93	489.88	0.000	0.782
7/31/2004	8.03	51.68	6.44		70.93	552.54	489.88	0.000	0.780
8/31/2004	7.87	50.84	6.46		71.18	554.11	489.88	0.000	0.777
9/30/2004	7.65	50.90	6.65		71.41	555.64	489.88	0.000	0.775
10/31/2004	7.73	52.83	6.83		71.65	557.28	489.88	0.000	0.773
11/30/2004	7.09	52.71	7.43		71.86	558.86	489.88	0.000	0.771
12/31/2004	6.65	54.72	8.23		72.06	560.55	489.88	0.000	0.768
1/31/2005	6.79	52.24	7.69		72.28	562.17	489.88	0.000	0.766
2/28/2005	6.74	51.86	7.70		72.46	563.63	489.88	0.000	0.764
3/31/2005	5.99	51.76	8.64		72.65	565.23	489.88	0.000	0.762
4/30/2005	5.58	52.14	9.35		72.82	566.79	489.88	0.000	0.760
5/31/2005	5.52	51.07	9.26		72.99	568.38	489.88	0.000	0.758
6/30/2005	5.20	51.19	9.85		73.14	569.91	489.88	0.000	0.756
7/31/2005	5.08	52.10	10.26		73.30	571.53	489.88	0.000	0.754
8/31/2005	6.70	51.67	7.71		73.51	573.13	489.88	0.000	0.752
9/30/2005	6.35	52.41	8.25		73.70	574.70	489.88	0.000	0.750
10/31/2005	6.02	51.78	8.60		73.89	576.31	489.88	0.000	0.748
11/30/2005	6.11	54.40	8.91		74.07	577.94	489.88	0.000	0.745
12/31/2005	5.89	55.45	9.42		74.25	579.66	489.88	0.000	0.743
1/31/2006	6.13	56.28	9.18		74.44	581.40	489.88	0.000	0.741
2/28/2006	5.42	52.26	9.65		74.59	582.87	489.88	0.000	0.739
3/31/2006	3.85	22.77	5.92		74.71	583.57	489.88	0.000	0.738
4/30/2006	2.78	35.20	12.65		74.80	584.63	489.88	0.000	0.737
5/31/2006	4.25	54.41	12.80		74.93	586.32	489.88	0.000	0.735
6/30/2006	4.61	55.79	12.10		75.07	587.99	489.88	0.000	0.733
7/31/2006	5.63	52.95	9.40		75.24	589.63	489.88	0.000	0.731
8/31/2006	5.77	55.10	9.54		75.42	591.34	489.88	0.000	0.729
9/30/2006	5.56	55.24	9.94		75.59	593.00	489.88	0.000	0.727
10/31/2006	5.01	54.50	10.88		75.74	594.69	489.88	0.000	0.725
11/30/2006	5.11	57.25	11.20		75.90	596.40	489.88	0.000	0.723
12/31/2006	5.48	59.96	10.93		76.07	598.26	489.88	0.000	0.721
1/31/2007	5.50	61.80	11.24		76.24	600.18	489.88	0.000	0.719
2/28/2007	5.45	58.21	10.69		76.39	601.81	489.88	0.000	0.717
3/31/2007	5.37	55.61	10.36		76.55	603.53	489.88	0.000	0.715
4/30/2007	4.87	53.34	10.95		76.70	605.13	489.88	0.000	0.713
5/31/2007	5.17	52.02	10.07		76.86	606.74	489.88	0.000	0.711
6/30/2007	5.09	54.94	10.79		77.01	608.39	489.88	0.000	0.709
7/31/2007	5.53	59.10	10.70		77.19	610.22	489.88	0.000	0.707
8/31/2007	4.85	47.03	9.69		77.34	611.68	489.88	0.000	0.705
9/30/2007	4.16	44.66	10.73		77.46	613.02	489.88	0.000	0.704
10/31/2007	4.67	56.25	12.04		77.61	614.77	489.88	0.000	0.702
11/30/2007	4.38	50.19	11.46		77.74	616.27	489.88	0.000	0.700
12/31/2007	4.18	48.26	11.54		77.87	617.77	489.88	0.000	0.699
1/31/2008	4.27	54.46	12.74		78.00	619.46	489.88	0.000	0.697
2/29/2008	4.17	55.29	13.26		78.12	621.06	489.88	0.000	0.695
3/31/2008	3.77	55.19	14.64		78.24	622.77	489.88	0.000	0.693
4/30/2008	4.28	55.60	12.98		78.37	624.44	489.88	0.000	0.692
5/31/2008	3.97	50.94	12.84		78.49	626.02	489.88	0.000	0.690
6/30/2008	3.83	48.20	12.57		78.60	627.46	489.88	0.000	0.689
7/31/2008	4.19	53.26	12.71		78.73	629.11	489.88	0.000	0.687
8/31/2008	4.01	55.85	13.93		78.86	630.85	489.88	0.000	0.685

Date	Oil Rate (CD) m3/d	Water Rate (CD) m3/d	Water Oil Ratio m3/m3	Water Inj Rate (CD) m3/d	Cum Oil Prod Km3	Cum Water Prod Km3	Cum Water Inj Km3	Voidage Replacement Ratio	Cum Voidage Replacement Ratio
9/30/2008	3.58	59.42	16.58		78.96	632.63	489.88	0.000	0.683
10/31/2008	3.60	59.40	16.50		79.08	634.47	489.88	0.000	0.681
11/30/2008	4.10	56.87	13.87		79.20	636.18	489.88	0.000	0.680
12/31/2008	4.17	55.03	13.19		79.33	637.88	489.88	0.000	0.678
1/31/2009	4.22	53.85	12.77		79.46	639.55	489.88	0.000	0.676
2/28/2009	4.11	53.58	13.02		79.57	641.05	489.88	0.000	0.675
3/31/2009	4.79	53.25	11.11		79.72	642.70	489.88	0.000	0.673
4/30/2009	4.72	51.01	10.81		79.86	644.23	489.88	0.000	0.671
5/31/2009	5.62	52.61	9.37		80.04	645.86	489.88	0.000	0.670
6/30/2009	5.34	52.36	9.81		80.20	647.43	489.88	0.000	0.668
7/31/2009	5.41	52.03	9.61		80.37	649.05	489.88	0.000	0.667
8/31/2009	5.46	52.51	9.61		80.54	650.67	489.88	0.000	0.665
9/30/2009	5.12	48.61	9.49		80.69	652.13	489.88	0.000	0.663
10/31/2009	5.54	51.37	9.27		80.86	653.73	489.88	0.000	0.662
11/30/2009	5.37	51.81	9.65		81.02	655.28	489.88	0.000	0.660
12/31/2009	5.33	50.56	9.49		81.19	656.85	489.88	0.000	0.659
1/31/2010	5.10	45.48	8.91		81.35	658.26	489.88	0.000	0.657
2/28/2010	5.32	52.18	9.81		81.49	659.72	489.88	0.000	0.656
3/31/2010	4.59	51.26	11.16		81.64	661.31	489.88	0.000	0.654
4/30/2010	4.26	51.24	12.04		81.76	662.84	489.88	0.000	0.653
5/31/2010	4.25	52.06	12.26		81.90	664.46	489.88	0.000	0.651
6/30/2010	3.87	46.60	12.03		82.01	665.86	489.88	0.000	0.650
7/31/2010	4.29	49.55	11.56		82.15	667.39	489.88	0.000	0.649
8/31/2010	5.09	52.30	10.27		82.30	669.01	489.88	0.000	0.647
9/30/2010	4.76	51.26	10.77		82.45	670.55	489.88	0.000	0.646
10/31/2010	5.03	49.77	9.89		82.60	672.09	489.88	0.000	0.644
11/30/2010	4.89	50.44	10.31		82.75	673.61	489.88	0.000	0.643
12/31/2010	5.01	50.98	10.18		82.90	675.19	489.88	0.000	0.641
1/31/2011	5.14	49.47	9.63		83.06	676.72	489.88	0.000	0.640
2/28/2011	5.23	47.27	9.04		83.21	678.04	489.88	0.000	0.639
3/31/2011	4.65	41.06	8.83		83.35	679.32	489.88	0.000	0.637
4/30/2011	4.58	52.00	11.35		83.49	680.88	489.88	0.000	0.636
5/31/2011	3.98	34.82	8.75		83.61	681.96	489.88	0.000	0.635
6/30/2011	3.03	20.68	6.82		83.71	682.58	489.88	0.000	0.634
7/31/2011	3.14	35.49	11.32		83.80	683.68	489.88	0.000	0.634
8/31/2011	3.37	44.10	13.10		83.91	685.04	489.88	0.000	0.632
9/30/2011	3.49	49.38	14.15		84.01	686.53	489.88	0.000	0.631
10/31/2011	3.39	50.02	14.75		84.12	688.08	489.88	0.000	0.630
11/30/2011	3.21	47.74	14.89		84.21	689.51	489.88	0.000	0.628
12/31/2011	2.87	47.78	16.66		84.30	690.99	489.88	0.000	0.627
1/31/2012	3.08	50.13	16.27		84.40	692.54	489.88	0.000	0.626
2/29/2012	3.38	53.27	15.78		84.50	694.09	489.88	0.000	0.624
3/31/2012	3.94	52.94	13.45		84.62	695.73	489.88	0.000	0.623
4/30/2012	3.77	50.88	13.51		84.73	697.26	489.88	0.000	0.622
5/31/2012	3.43	52.68	15.35		84.84	698.89	489.88	0.000	0.620
6/30/2012	3.29	51.13	15.56		84.94	700.42	489.88	0.000	0.619
7/31/2012	3.20	53.07	16.60		85.03	702.07	489.88	0.000	0.618
8/31/2012	3.24	58.32	18.03		85.14	703.88	489.88	0.000	0.616
9/30/2012	3.60	57.67	16.04		85.24	705.61	489.88	0.000	0.615
10/31/2012	2.84	25.48	8.99		85.33	706.40	489.88	0.000	0.614
11/30/2012	2.32	5.91	2.55		85.40	706.57	489.88	0.000	0.614
12/31/2012	3.38	51.02	15.09		85.51	708.15	489.88	0.000	0.613
1/31/2013	3.49	56.32	16.12		85.61	709.90	489.88	0.000	0.611
2/28/2013	3.35	54.93	16.41		85.71	711.44	489.88	0.000	0.610

Date	Oil Rate (CD) m3/d	Water Rate (CD) m3/d	Water Oil Ratio m3/m3	Water Inj Rate (CD) m3/d	Cum Oil Prod Km3	Cum Water Prod Km3	Cum Water Inj Km3	Voidage Replacement Ratio	Cum Voidage Replacement Ratio
3/31/2013	3.04	52.90	17.39		85.80	713.08	489.88	0.000	0.609
4/30/2013	2.78	51.40	18.49		85.89	714.62	489.88	0.000	0.607
5/31/2013	2.99	47.53	15.89		85.98	716.09	489.88	0.000	0.606
6/30/2013	2.97	44.92	15.14		86.07	717.44	489.88	0.000	0.605
7/31/2013	2.65	47.35	17.90		86.15	718.91	489.88	0.000	0.604
8/31/2013	3.14	50.82	16.21		86.25	720.48	489.88	0.000	0.603
9/30/2013	3.18	51.48	16.21		86.34	722.03	489.88	0.000	0.602
10/31/2013	2.93	53.64	18.31		86.43	723.69	489.88	0.000	0.600
11/30/2013	3.51	54.50	15.53		86.54	725.33	489.88	0.000	0.599
12/31/2013	3.24	52.96	16.35		86.64	726.97	489.88	0.000	0.598
1/31/2014	3.15	46.94	14.88		86.74	728.42	489.88	0.000	0.597
2/28/2014	3.20	48.39	15.10		86.83	729.78	489.88	0.000	0.596
3/31/2014	3.41	50.19	14.73		86.93	731.33	489.88	0.000	0.594
4/30/2014	3.16	54.29	17.16		87.03	732.96	489.88	0.000	0.593
5/31/2014	2.23	51.59	23.18		87.09	734.56	489.88	0.000	0.592
6/30/2014	2.52	53.82	21.33		87.17	736.18	489.88	0.000	0.591
7/31/2014	2.28	55.99	24.59		87.24	737.91	489.88	0.000	0.589
8/31/2014	2.65	52.91	19.95		87.32	739.55	489.88	0.000	0.588
9/30/2014	2.88	58.11	20.20		87.41	741.30	489.88	0.000	0.587
10/31/2014	2.67	57.68	21.62		87.49	743.08	489.88	0.000	0.586
11/30/2014	2.79	59.72	21.38		87.58	744.88	489.88	0.000	0.584
12/31/2014	3.08	58.70	19.08		87.67	746.70	489.88	0.000	0.583
1/31/2015	2.85	59.63	20.89		87.76	748.54	489.88	0.000	0.582
2/28/2015	2.66	53.19	19.96		87.83	750.03	489.88	0.000	0.580
3/31/2015	2.79	47.66	17.10		87.92	751.51	489.88	0.000	0.579
4/30/2015	2.75	52.29	19.01		88.00	753.08	489.88	0.000	0.578
5/31/2015	2.66	52.15	19.60		88.09	754.70	489.88	0.000	0.577
6/30/2015	2.86	49.59	17.36		88.17	756.18	489.88	0.000	0.576
7/31/2015	3.17	42.39	13.38		88.27	757.50	489.88	0.000	0.575
8/31/2015	2.81	16.91	6.01		88.36	758.02	489.88	0.000	0.575
9/30/2015	2.53	15.75	6.22		88.43	758.50	489.88	0.000	0.574
10/31/2015	2.93	16.64	5.68		88.52	759.01	489.88	0.000	0.574
11/30/2015	3.76	15.35	4.09		88.64	759.47	489.88	0.000	0.573
12/31/2015	3.50	15.56	4.45		88.75	759.95	489.88	0.000	0.573
1/31/2016	3.43	15.23	4.44		88.85	760.43	489.88	0.000	0.573
2/29/2016	3.58	15.75	4.40		88.96	760.88	489.88	0.000	0.572
3/31/2016	2.75	15.64	5.70		89.04	761.37	489.88	0.000	0.572
4/30/2016	3.06	14.20	4.65		89.13	761.79	489.88	0.000	0.572
5/31/2016	2.88	14.29	4.96		89.22	762.24	489.88	0.000	0.571
6/30/2016	2.57	12.07	4.69		89.30	762.60	489.88	0.000	0.571
7/31/2016	2.68	12.03	4.48		89.38	762.97	489.88	0.000	0.571
8/31/2016	2.90	12.79	4.41		89.47	763.37	489.88	0.000	0.570
9/30/2016	3.02	12.69	4.20		89.56	763.75	489.88	0.000	0.570
10/31/2016	2.78	12.45	4.47		89.65	764.13	489.88	0.000	0.570
11/30/2016	2.39	15.69	6.55		89.72	764.61	489.88	0.000	0.569
12/31/2016	3.43	20.08	5.86		89.83	765.23	489.88	0.000	0.569