

PROTECT MANITOBA'S WATERS AND RESOURCES

STOP AQUATIC INVASIVE SPECIES

Spiny Waterflea (*Bythotrephes longimanus*) is a Prohibited Species under *The Fisheries Act*. Possession and transportation of Spiny Waterflea in Manitoba is illegal.

Its presence has been confirmed in the Winnipeg River and Lake Winnipeg. Help protect our precious lakes, rivers, and wetlands by taking a few important precautions when boating, or before moving any water-based equipment and gear such as nets, ropes, buoys, life jackets, anchors and totes, between waterbodies.

BEFORE LAUNCHING AND BEFORE LEAVING:

1. CLEAN

Clean and inspect watercraft, trailer and all water-based equipment and gear. Remove all plants, animals and mud. Rinse using high pressure and extremely hot tap water – preferably 50°C (120°F).

2. DRAIN

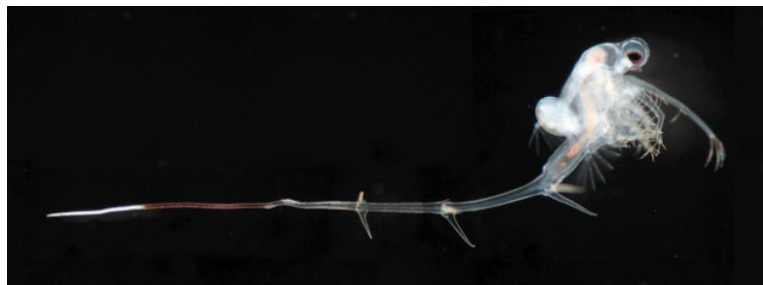
Drain all water from watercraft and all water-based equipment and gear including the motor, livewell, bilge and bait buckets and totes before transporting.

3. DRY

Dry watercraft and equipment for at least 5 days in the hot summer sun, 18 days in the spring/fall, or freeze for 3 days (if rinsing is not available).

4. DISPOSE

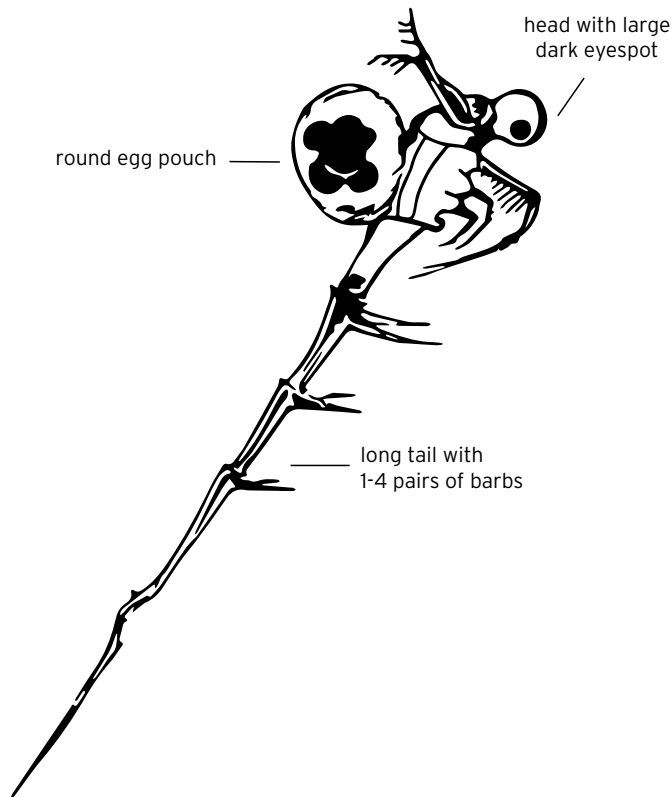
Dispose of unwanted live bait and worms in the trash, and dump all water from bait buckets and totes on land away from any waterbody.



ABOVE: A Single Spiny Waterflea (not to scale).
Andrea Miehs

LEFT: Spiny Waterflea commonly collect in jelly-like masses.
York University and the NSERC CAISN II

What does Spiny Waterflea look like?



Spiny Waterflea:

- are very small invertebrates (1-1.5 cm) with long, barbed tails (60 per cent of their body size)
- reproduce rapidly and have few predators due to their long, barbed-tail
- deteriorate aquatic ecosystems by aggressively consuming zooplankton, such as Daphnia the main food source for many native sport and commercially important fish
- produce eggs that can be resistant to drying and freezing
- clog fishing nets, and their tail barbs can attach to fishing lines, ropes, downrigger cables and even clothing
- can be moved from one waterbody to another un-noticed in bait buckets, totes, livewells, bilge or on any fishing equipment, nets, and water-based gear
- cannot be eradicated once they become established, so it is extremely important to stop their spread

**IT ONLY TAKES ONE SPINY WATERFLEA TO START AN INFESTATION.
PREVENTION IS OUR BEST DEFENCE.**

For more information, or if you find Spiny Waterflea call (toll-free):

1-87-STOP AIS-0

(1-877-867-2470)

or visit: manitoba.ca/StopAIS

Note the exact location and provide GPS co-ordinates, if possible.

Take pictures and submit to fish@gov.mb.ca