

Issue 1 – May 7, 2026

Manitoba Potato Report



[Seasonal Reports](#) [Weekly Weather Maps](#) [Potato Production](#)

Provincial Summary

- Planting started on April 24, and is around 25-40% complete, ranging from 0 to 75% for various farms.
- It is a colder start to the season compared to 2025; soil moisture is adequate for planting.
- Regular weekly reports and other features will be provided, including late blight risk forecasting, updates on disease and insect pests on potatoes, and control recommendations. All reports and information will also be available at <http://www.mbpotatoes.ca/index.cfm>.

Ag Weather Data

Precipitation and Soil Moisture

- In the potato growing areas, the soils are generally categorized wet (based on Regional Soil Moisture Relative to Field Capacity) in 0-30 cm depths: with variations depending upon local field topography and soil characteristics. The soils at 120 cm depth had optimum to wet moisture relative to field capacity (Fig 1 & 2). <https://www.gov.mb.ca/agriculture/weather/pubs/soil-moisture-30cm.pdf>
- Precipitation (mm) in the week of May 1-3 was practically nil, but the ground has sufficient moisture for field work. The precipitation is significantly below normal (Fig 3a). <http://www.gov.mb.ca/agriculture/weather/pubs/percent-normal-precipitation.pdf>.

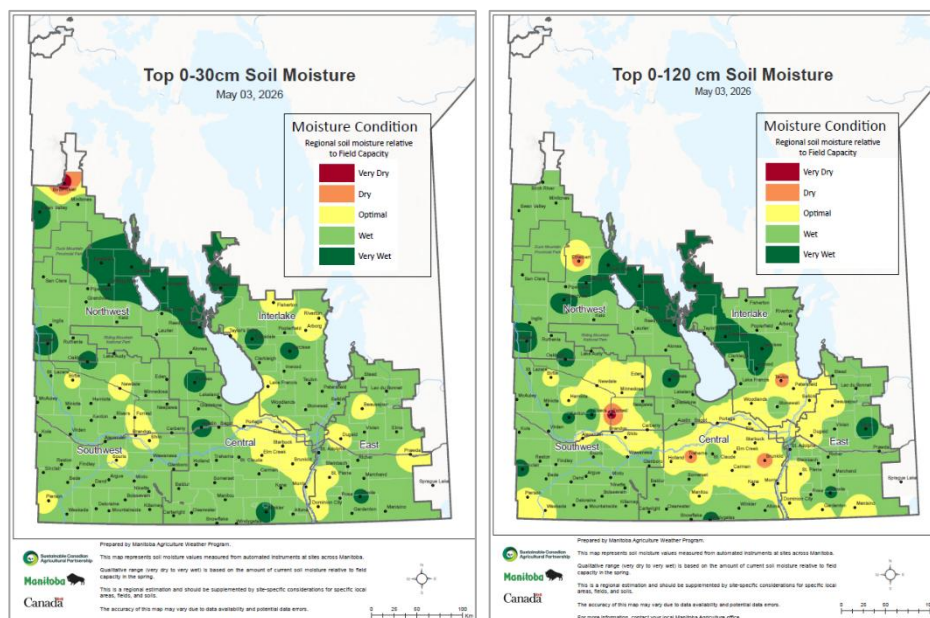
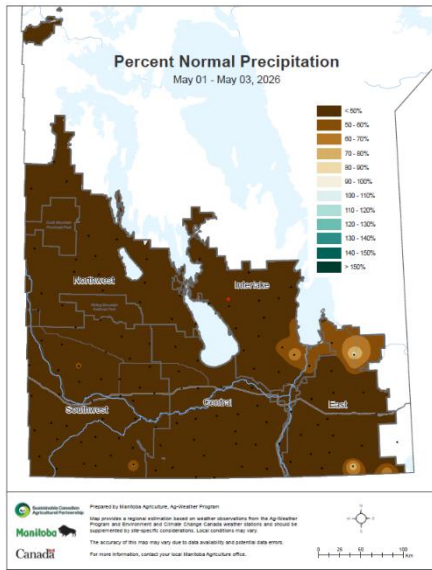


Fig 1 (left). Current soil moisture relative to field capacity at 0-30 cm depth, indicates the fields have optimal to wet conditions in potato growing areas.

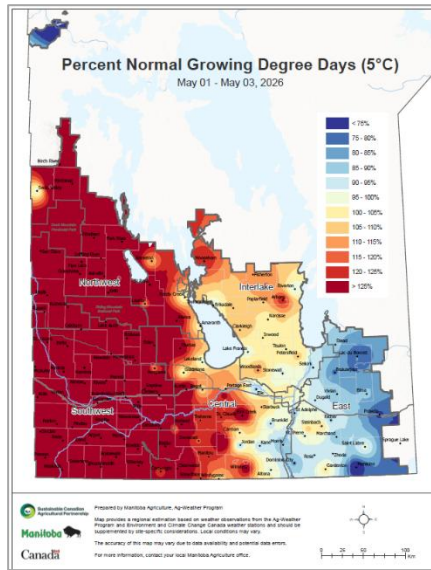
Fig 2 (right). Soil moisture at 120 cm depth also indicating optimal to wet soil moisture relative to field capacity

Report compiled by Dr. Vikram Bisht
Potato and Horticulture Crop Pathologist, Manitoba Agriculture
[Subscribe](#) to the weekly Potato Report





3a



3b

Fig 3a (left): Precipitation (mm) in the first week of May <math>< 50\%</math> of normal, similar to 2025, while it was 203 to 474 % above normal in 2024.

3b (right): The air temperatures have been warm and above normal in western Manitoba and colder on the eastern side.

Temperatures – Air and Soil

- Daytime high temperatures ranged from high 15 to 25°C (Table 1, Fig 4). Overnight lows from -5.9°C (Glenboro) to 4.2 (Treherne) from April 24 to May 6. These temperatures are much cooler than 2025.
- Cumulative heat as Growing Degree Days (GDD, base 5°C) for May 1-3 indicates the week has been warmer than normal, ranging over 96 to 160% of normal GDD (Table 1), like 2025. In 2024 at this time the GDD was only <math>< 75\%</math> to nearly normal at different weather stations in potato areas. 2025 had an abnormally warm start of the season.
- Soil temperatures at 5 cm depths were up to 5 to 10°C by first week in May (Fig 4) and were cooler in the 20 cm depths, around 2 to 8°C in the selected potato sites (Fig 5, 6).
- The 2026 soil temperatures at 5 cm and 20 cm are colder than at the same time in 2025, so a slower emergence of potatoes could be expected.

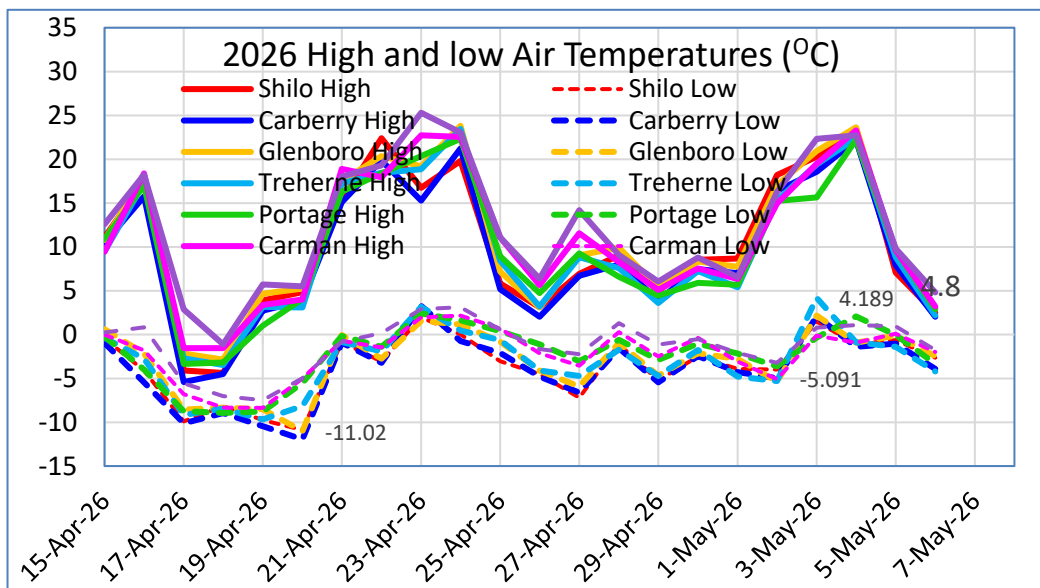


Fig 4. The air temperatures ranged from were 10-25 °C when the planting started on April 24 in western Manitoba.

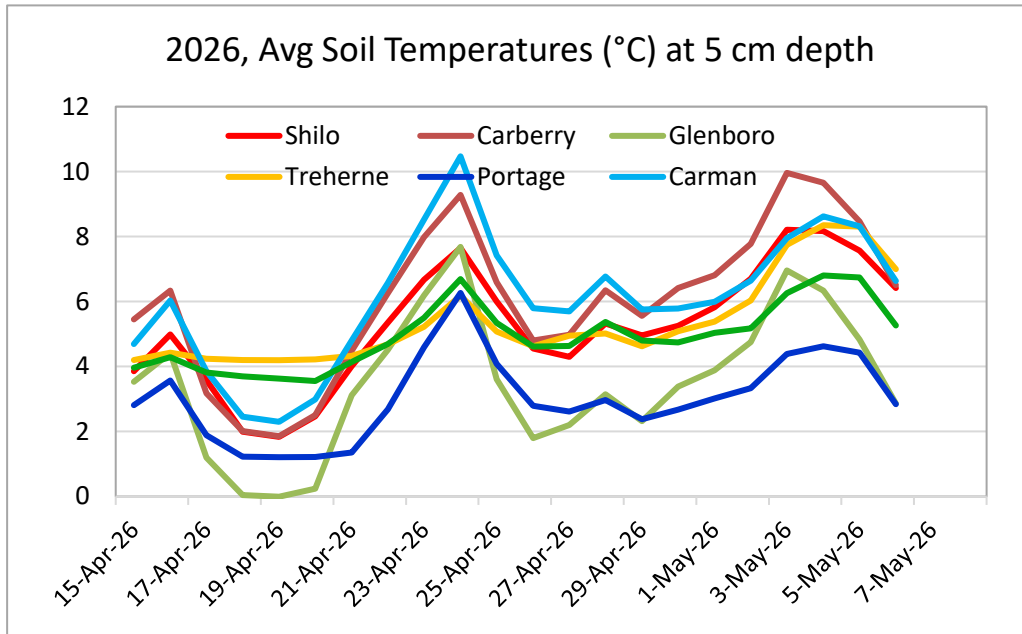


Fig 5. Soil temperatures at 5 cm depth at selected sites were reaching around 10 °C, by the first week in May. There was an early warming around 24th of April but cooled down soon.

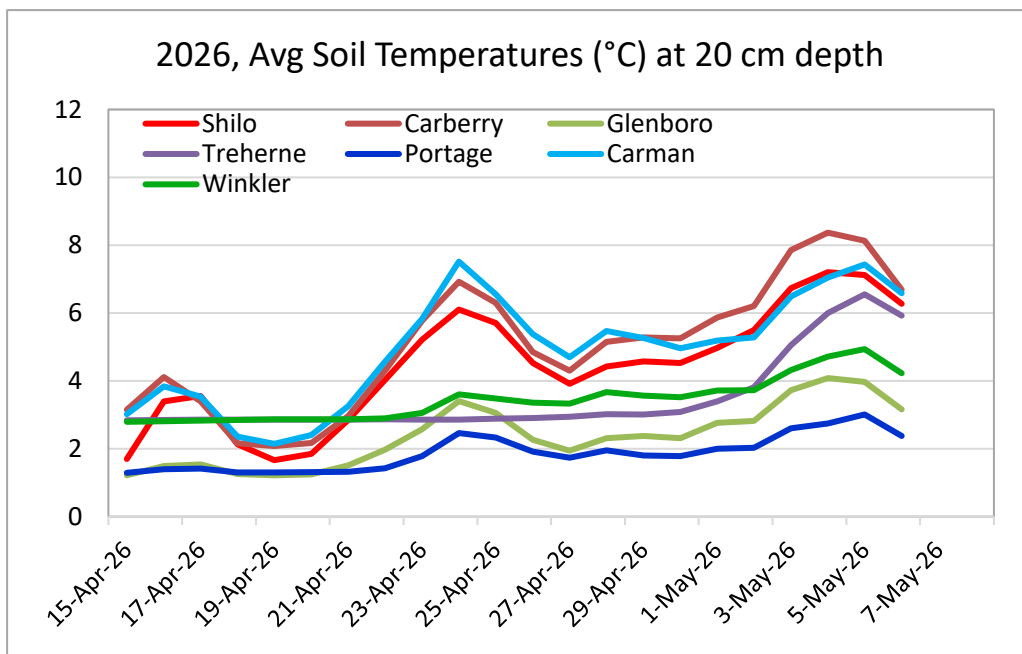


Fig 6. Soil temperatures at 20 cm depth at selected sites, were around 2 to 8 °C around planting time and lower than 5-cm depths.

Table 1. Manitoba Ag Weather Data – May 1-3

Region	Max Temp (°C)	Min Temp (°C)	Rainfall (mm) for the week	Rainfall (mm) (Since May 1)	2026 Rainfall (% of normal) since May 1	GDD (% of normal)
Altona	23.1	-6.5	0.6	1	19	96
Austin	23.0	-3.3	0.0	0	0	141
Bagot	22.4	-3.9	0.0	0	0	107
Carberry EC	23.2	-4.3	0	0	0	144
Carman	23.3	-5.1	0.6	1	18	105
Glenboro	23.7	-5.4	0.3	0	15	136
Holland	23.5	-5.2	0.8	0	9	144
Morden	22.6	-4.7	0.5	1	12	119
Portage EC	23.2	-2.2	0	0	0	128
Rivers	22.7	-2.7	1.5	2	44	159
Shilo	23.6	-4.0	0.8	0.8	1	140
St. Claude	22.4	-2.9	0	0	0	120
Treherne	22.4	-5.3	0	0	0	120
Wawanesa	25.0	-4.0	0.3	0	7	158
Winkler	22.7	-3.2	0	0	0	120

For more Manitoba weather information, visit: www.gov.mb.ca/agriculture/weather

More information on:

Crop Water Demand (CWD) mm: www.mbpotatoes.ca/cwd.cfm

P-Days: www.mbpotatoes.ca/pday.cfm

Crop Progress

- Potato planting in western Manitoba began on 24 April, consistent with 2025, slightly later than 22 April 2024 and 27 April 2023, but notably earlier than 11 May 2022.
- The planting has been without much weather-related interruptions and is progressing rapidly, especially in the western and warmer part of the province.
- Planting in the western side of the province is currently 10 - 75% complete. Central potato growing areas around Treherne, Portage and McGregor are around 0 - 50% planted. The southern part of the province (around Carman and Winkler) is 10 to 25% planted.
- Overall, potato planting is guesstimated to be around 25-40% complete in the province. Some farms are expected to finish potato planting by end of next week, depending on weather.
- With good warm weather, and a little rain (on Friday, May 8) in the forecast, planting could be well advanced within the week. Overnight frost of -4°C forecast for some areas on May 8 /9 should not affect the planted seed. [Manitoba - Weather Conditions and Forecast by Locations - Environment Canada](#)
- Late blight risk maps, P-Days, and SprayCast maps will be available at <http://www.mbpotatoes.ca/index.cfm>.

Disease Monitoring

- Late blight risk forecasting will be provided on a regional basis at www.mbpotatoes.ca. Late blight disease risk is projected to start accumulating around June 1, when normally 50% of the fields show emergence. In the last five years, no late blight has been observed in Manitoba, though spores have been detected in spore traps at different sites.

- Late blight can start from air-borne spores, infected seed potatoes, from cull piles with late blight infection or sometimes from infected tomato plants. In 2010 infected tomato plants were responsible for spreading the inoculum across Manitoba.
- Diseases like blackleg, early blight, verticillium wilt and powdery scab will be monitored during the season.
- Herbicide injury on seed and non-target drift injury will be identified, if needed.

Insect Pest Monitoring

- Aphid monitoring using suction traps will start in early June in 8 seed fields as done in 2025. Green peach aphid and Potato aphids could be a concern for seed potatoes. In 2023 and 2024 the aphid catches were high, but aphid trapping was very low in 2025, though some seed lots may have been affected by local surge late in season.
- European Corn Borer monitoring will be started in early July. The ECB catches in traps have been reducing over the past few years. If ECB catches are low in 2025, the trapping program may be ended.
- Colorado potato beetle incidences will be monitored and if possible tested for insecticide resistance.
- Wireworm damage has been sporadic in the province.

Growers and industry stakeholders, please report or submit for diagnosis, any disease or insect observations of importance. If you suspect late blight in your area, please contact vikram.bisht@gov.mb.ca

Wishing Manitoba growers and industry colleagues a very good season ahead.

All reports and information will also be available at <http://www.mbpotatoes.ca/index.cfm> and archived at [Manitoba Potato Reports](#)