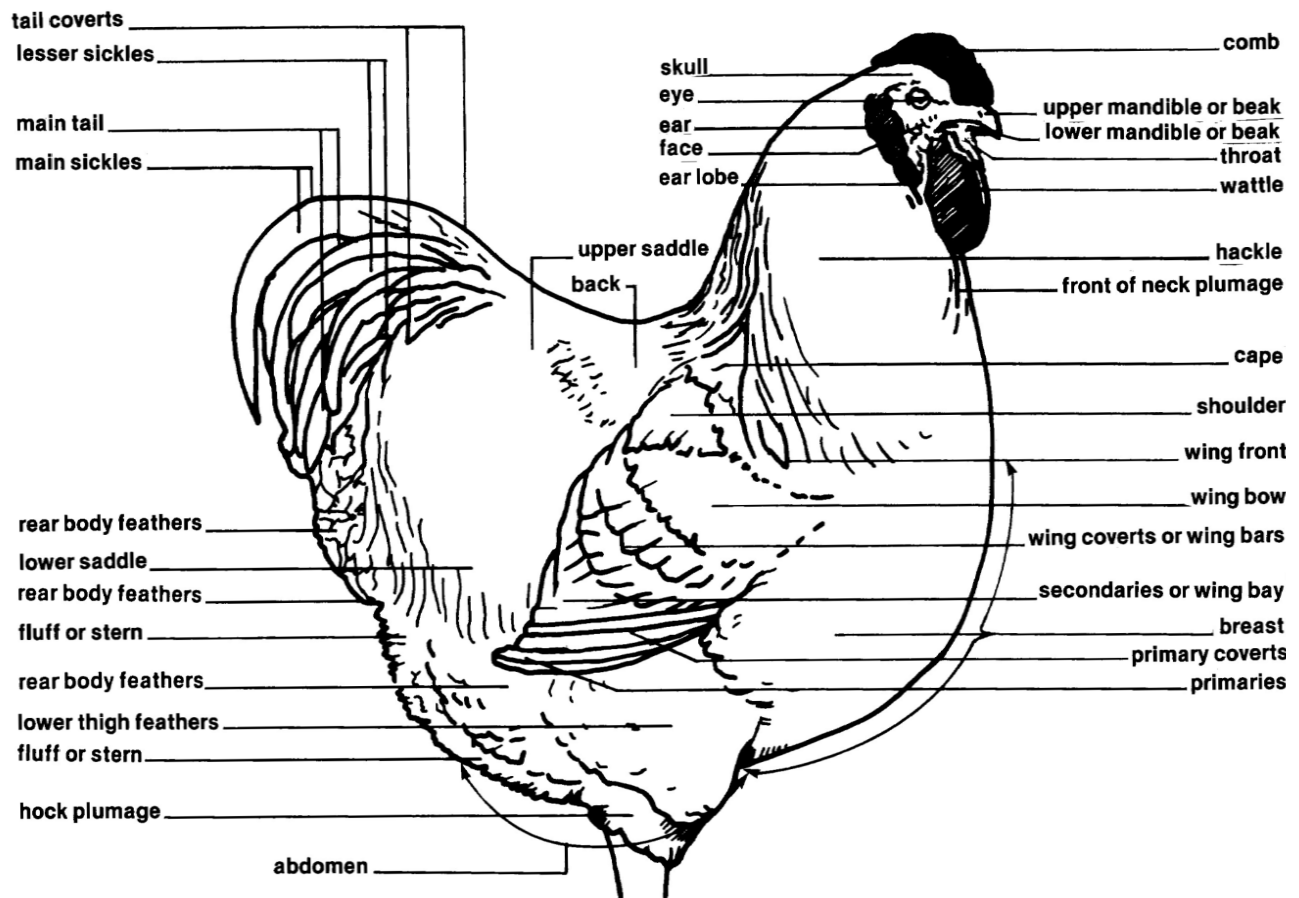




CANADA
4-H Manitoba

Judging Poultry

Parts of Poultry



Live Poultry Scorecard

	Perfect Score
Breed Type	40
<ul style="list-style-type: none"> • Size and weight appropriate to breed (meat birds will be heavier) • Ideal shape and type for breed 	
Body	30
<ul style="list-style-type: none"> • Broad back from shoulders to hips • Large abdomen for digestive function • Large heart girth indicates good heart and lung function • Large breast area indicates meatiness • Check egg layer for eggs 	
Condition	10
<ul style="list-style-type: none"> • Bright red comb, clear eyes • Strong head • No evidence of disease • No bleaching of colour at beak or shanks 	
Legs and Toes	10
<ul style="list-style-type: none"> • Free from scales • No deformities 	
Colour	10
<ul style="list-style-type: none"> • Correct colour for breed • No brass colouring on white fowl • No grey specks on white fowl 	
Total	100

Sections of the Judging Fact Sheets were adapted from the Alberta 4-H Judging Project Guide with the permission of the Alberta 4-H Council and the 4-H Ontario Judging Toolkit with the permission of the Ontario 4-H Council.

Manitoba 4-H Contact Information

1129 Queens Avenue Brandon, MB R7A 1L9
 Ph: (204) 726-6613 Fax: (204) 726-6260
4h@gov.mb.ca
www.manitoba.ca/agriculture/4-h
www.4h.mb.ca