

MANITOBA MARKETS

Hog Prices



October 5, 2021

For definitions of how data is collected and calculated, please see

<https://www.gov.mb.ca/agriculture/markets-and-statistics/livestock-statistics/pubs/hog-price-report-definitions-and-methodology.pdf>

Exchange rates (Friday close)

1 US \$ = C \$1.2654

1 EURO = C \$1.4676

1 Yen = C \$0.01140

<https://www.bankofcanada.ca/rates/exchange/daily-exchange-rates/>

Manitoba Weighted Average Carcass Prices (including premiums and discounts)

All In Weights C\$/100 kg

| Week | Week ending date | 2021 | 2020 | Change from Previous Week | Change from Previous Year |
|--------------------------|------------------|---------------|---------------|---------------------------|---------------------------|
| 36 | 2021-09-10 | 234.83 | 170.10 | -3.2% | 38.1% |
| 37 | 2021-09-17 | 232.26 | 179.61 | -1.1% | 29.3% |
| 38 | 2021-09-24 | 230.30 | 189.20 | -0.8% | 21.7% |
| 39 | 2021-10-01 | 231.49 | 203.75 | 0.5% | 13.6% |
| Four week average | | 232.22 | 185.66 | - | 25.1% |

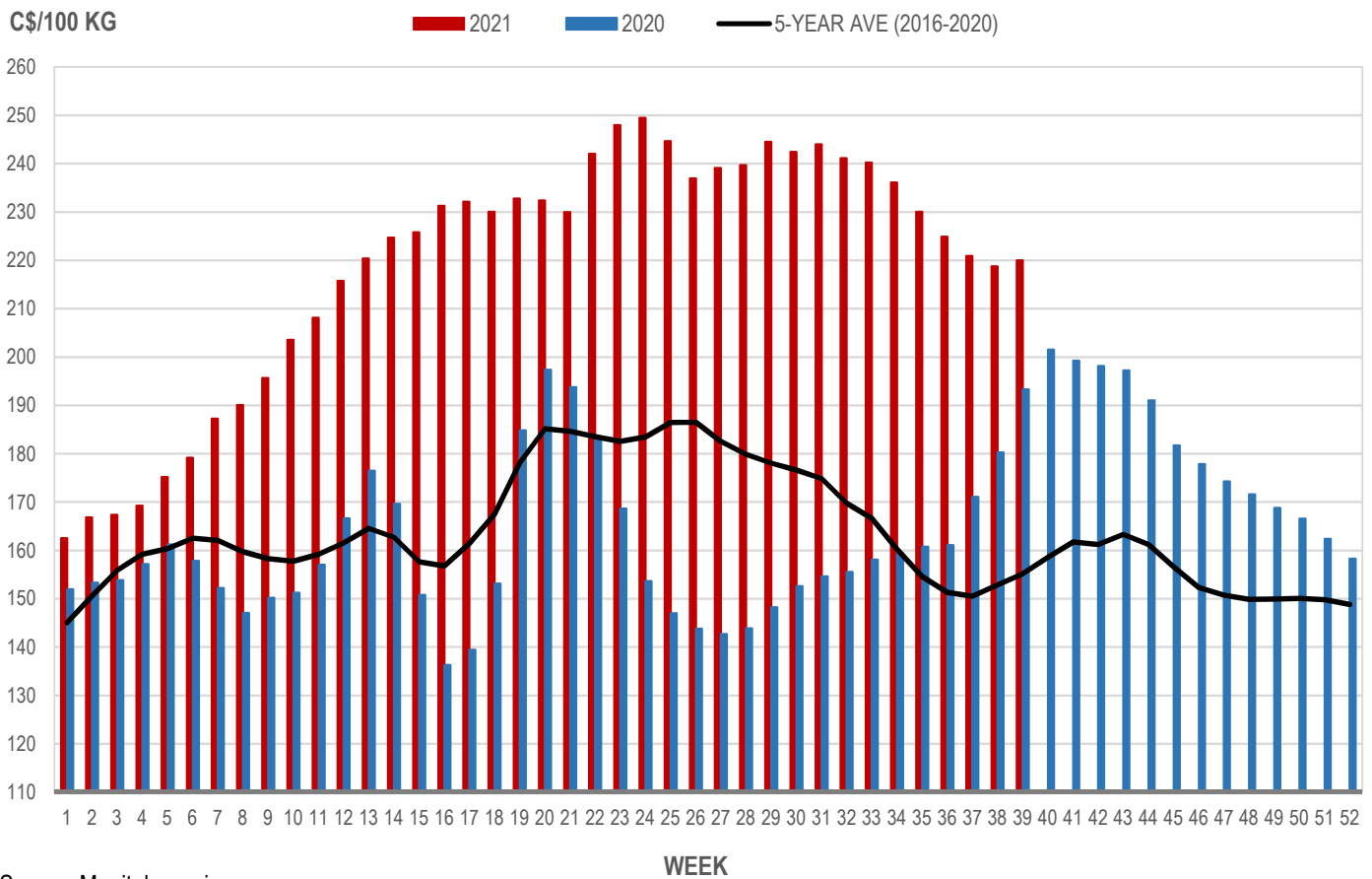
Source: Manitoba major processors.

Index 100, C\$/100 kg

| Week | Week ending date | 2021 | 2020 | Change from Previous Week | Change from Previous Year |
|--------------------------|------------------|---------------|---------------|---------------------------|---------------------------|
| 36 | 2021-09-10 | 224.91 | 161.07 | -2.2% | 39.6% |
| 37 | 2021-09-17 | 220.88 | 171.06 | -1.8% | 29.1% |
| 38 | 2021-09-24 | 218.73 | 180.28 | -1.0% | 21.3% |
| 39 | 2021-10-01 | 220.01 | 193.35 | 0.6% | 13.8% |
| Four week average | | 221.13 | 176.44 | - | 25.3% |

Source: Manitoba major processors.

MANITOBA WEIGHTED AVERAGE INDEX 100 HOG PRICES WEEKLY



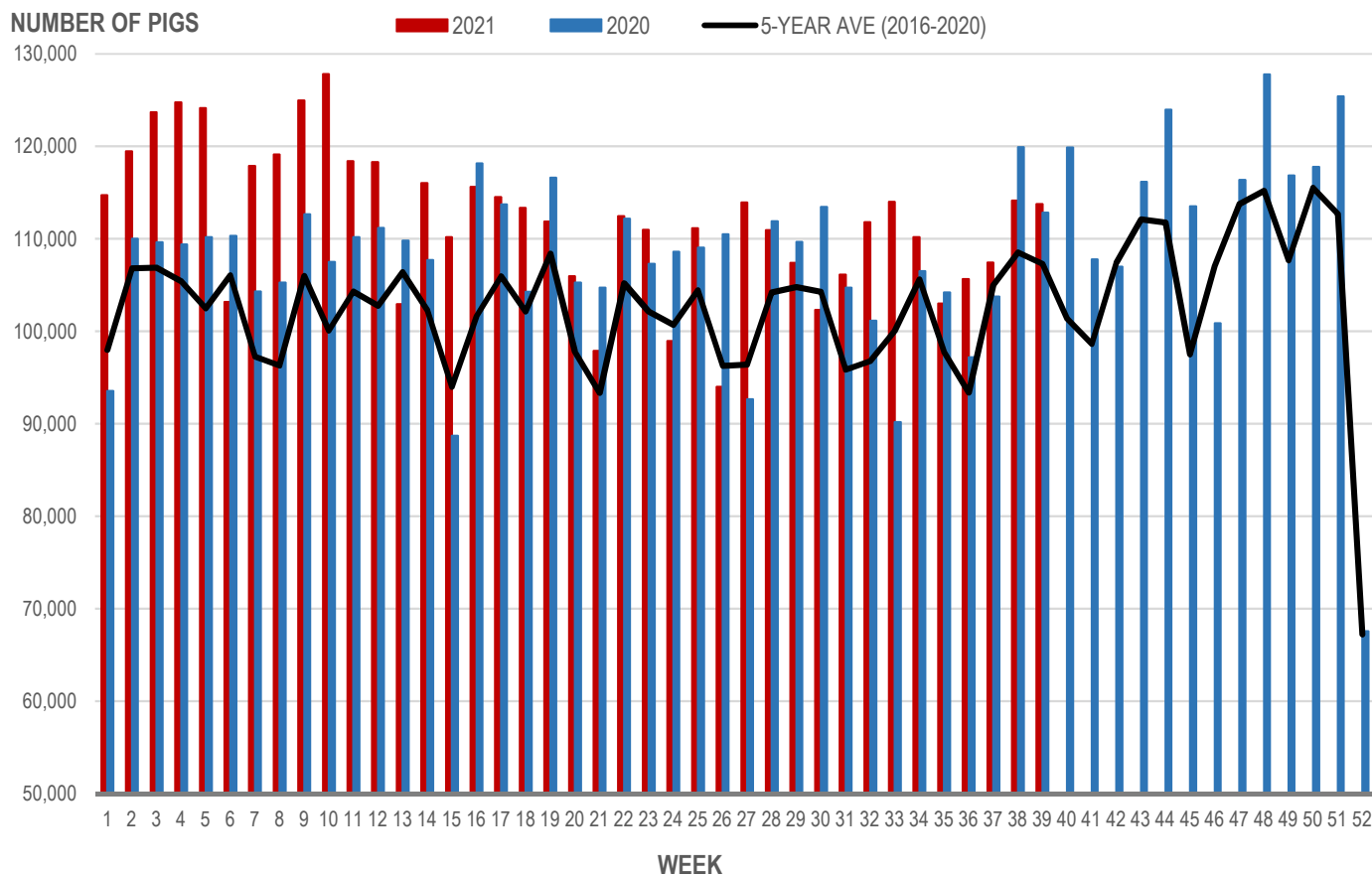
Source: Manitoba major processors

Number of Pigs Processed by Major Processors

| Week | Week ending date | 2021 | 2020 | Change from Previous Week | Change from Previous Year |
|--------------------------|------------------|----------------|----------------|---------------------------|---------------------------|
| 36 | 2021-09-10 | 105,638 | 97,188 | 2.6% | 8.7% |
| 37 | 2021-09-17 | 107,439 | 103,740 | 1.7% | 3.6% |
| 38 | 2021-09-24 | 114,125 | 119,894 | 6.2% | -4.8% |
| 39 | 2021-10-01 | 113,766 | 112,837 | -0.3% | 0.8% |
| Four week average | | 110,242 | 108,415 | - | 1.7% |

Source: Manitoba major processors.

NUMBER OF PIGS PROCESSED BY MAJOR PROCESSORS WEEKLY



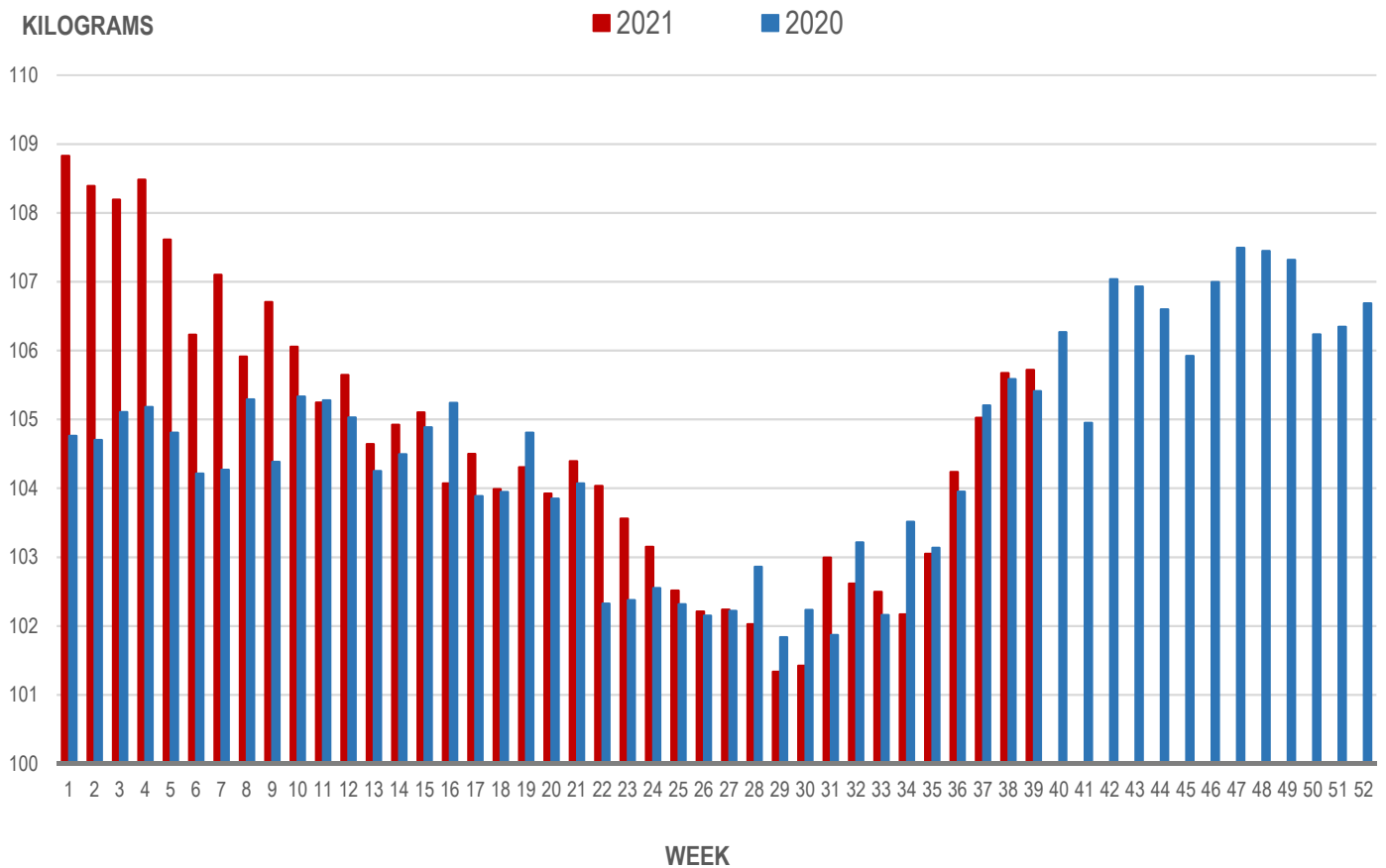
Source: Manitoba major processors

Average Weight of Hogs Processed by Major Processors, Kg

| Week | Week ending date | 2021 | 2020 | Change from Previous Week | Change from Previous Year |
|--------------------------|------------------|---------------|---------------|---------------------------|---------------------------|
| 36 | 2021-09-10 | 104.24 | 103.95 | 1.2% | 0.3% |
| 37 | 2021-09-17 | 105.02 | 105.20 | 0.8% | -0.2% |
| 38 | 2021-09-24 | 105.67 | 105.58 | 0.6% | 0.1% |
| 39 | 2021-10-01 | 105.72 | 105.41 | 0.0% | 0.3% |
| Four week average | | 105.16 | 105.04 | - | 0.1% |

Source: Manitoba major processors.

AVERAGE WEIGHT OF HOGS PROCESSED BY MAJOR PROCESSORS WEEKLY



Source: Manitoba major processors

CME FUTURES PRICES, US\$/lb, Friday settle price

| | LEAN HOG | Change * | PORK CUTOUT | Change * |
|-----------|-----------------|-----------------|--------------------|-----------------|
| Oct 2021 | 92.30 | 5.02 | 111.00 | 6.80 |
| Dec 2021 | 85.18 | 8.38 | 101.28 | 7.80 |
| Feb 2022 | 87.28 | 7.60 | 98.30 | 8.13 |
| Apr 2022 | 89.48 | 6.30 | 99.23 | 7.10 |
| May 2022 | 92.68 | 5.80 | 101.05 | 6.20 |
| Jun 2022 | 96.40 | 4.58 | 106.30 | 4.50 |
| July 2022 | 95.60 | 3.72 | 105.05 | 5.35 |
| Aug 2022 | 93.68 | 3.45 | 105.03 | 4.20 |
| Oct 2022 | 78.93 | 2.20 | 90.13 | 1.50 |
| Dec 2022 | 72.50 | 1.40 | 83.50 | 0.80 |
| Feb 2023 | 76.55 | 0.85 | 83.65 | 0.80 |

Source: CME

* Price change from previous week, US\$

MAPLE LEAF Sig #4 - Contract Prices Top of Range

| | Sig #4 Price C\$/100 kg | Change * |
|-----------|--------------------------------|-----------------|
| Nov 2021 | 195.83 | 20.21 |
| Dec 2021 | 188.41 | 20.22 |
| Jan 2022 | 191.15 | 17.44 |
| Feb 2022 | 194.07 | 17.43 |
| Mar 2022 | 190.91 | 14.27 |
| Apr 2022 | 197.10 | 13.48 |
| May 2022 | 201.83 | 9.15 |
| June 2022 | 210.14 | 9.12 |
| July 2022 | 209.69 | 9.12 |

Source: HAMs Marketing

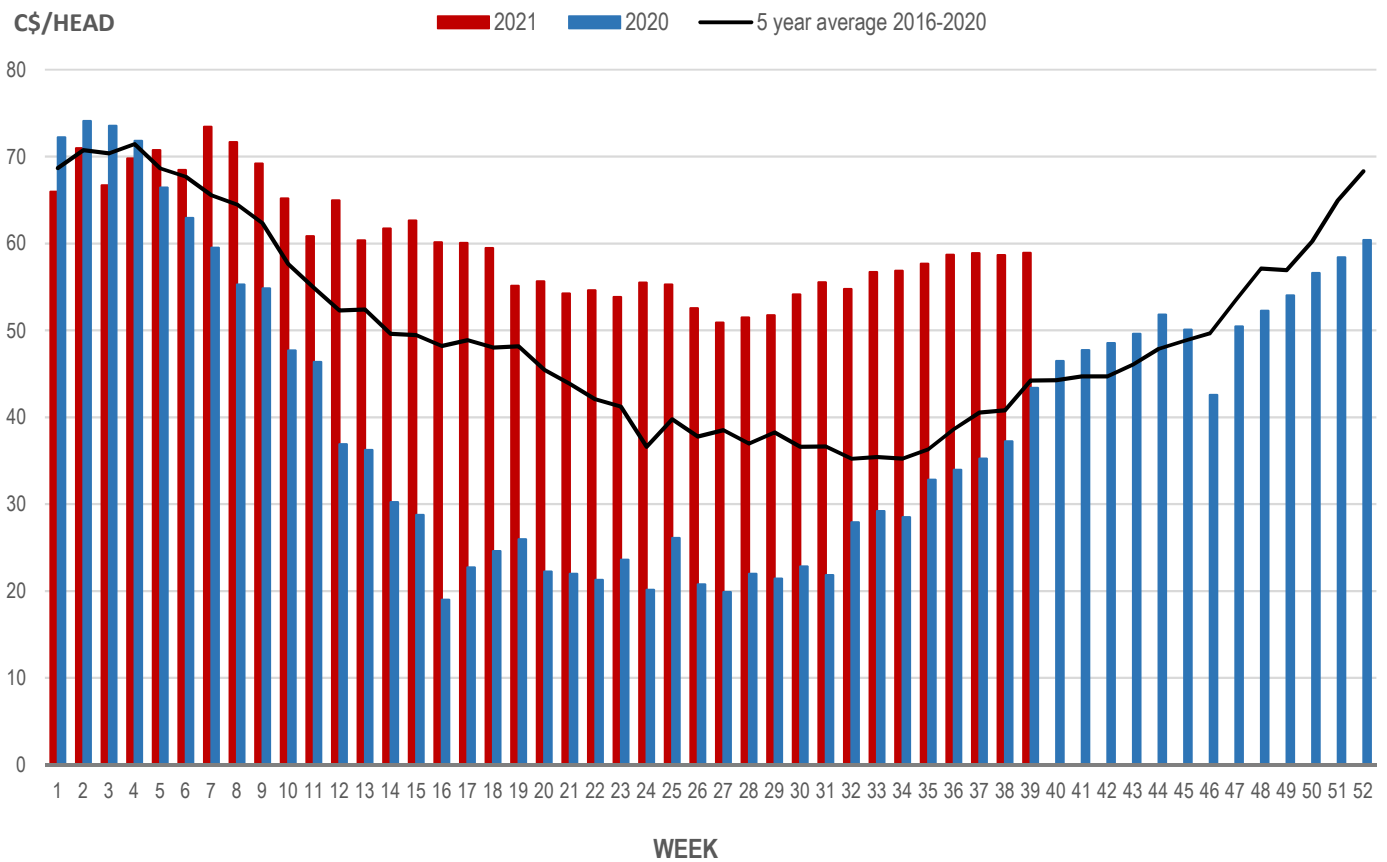
* Price change from previous week, C\$

Weaning Pigs (U.S. Total Composite Weighted Average Price per Head)

| | Formula and Cash Low, US\$/Head | Formula and Cash High, US\$/Head | Wtd Avg Price, US\$/Head | Wtd Avg Price, C\$/Head |
|-------------------------|------------------------------------|-------------------------------------|-----------------------------|----------------------------|
| Early Weaned (10-12 lb) | 35.00 | 56.00 | 46.58 | 58.94 |
| Feeder Pigs (40 lb) | 69.00 | 81.00 | 73.90 | 93.51 |

Source: USDA, AMS

EARLY WEANED PIGS (U.S. TOTAL COMPOSITE WEIGHTED AVERAGE PRICE PER HEAD) WEEKLY



Source: USDA, AMS

Contact us

Go to manitoba.ca/agriculture and click on Markets and Statistics

Email us at industryintelligence@gov.mb.ca

Follow us on Twitter @MBGovAg