

MANITOBA MARKETS

Hog Prices



November 9, 2021

For definitions of how data is collected and calculated, please see

<https://www.gov.mb.ca/agriculture/markets-and-statistics/livestock-statistics/pubs/hog-price-report-definitions-and-methodology.pdf>

Exchange rates (Friday close)

1 US \$ = C \$1.2452

1 EURO = C \$1.4376

1 Yen = C \$0.01097

<https://www.bankofcanada.ca/rates/exchange/daily-exchange-rates/>

Manitoba Weighted Average Carcass Prices (including premiums and discounts)

All In Weights C\$/100 kg

| Week | Week ending date | 2021 | 2020 | Change from Previous Week | Change from Previous Year |
|--------------------------|------------------|---------------|---------------|---------------------------|---------------------------|
| 41 | 2021-10-15 | 220.30 | 210.75 | -4.4% | 4.5% |
| 42 | 2021-10-22 | 211.03 | 207.34 | -4.2% | 1.8% |
| 43 | 2021-10-29 | 203.74 | 207.68 | -3.5% | -1.9% |
| 44 | 2021-11-05 | 201.67 | 200.48 | -1.0% | 0.6% |
| Four week average | | 209.19 | 206.56 | - | 1.3% |

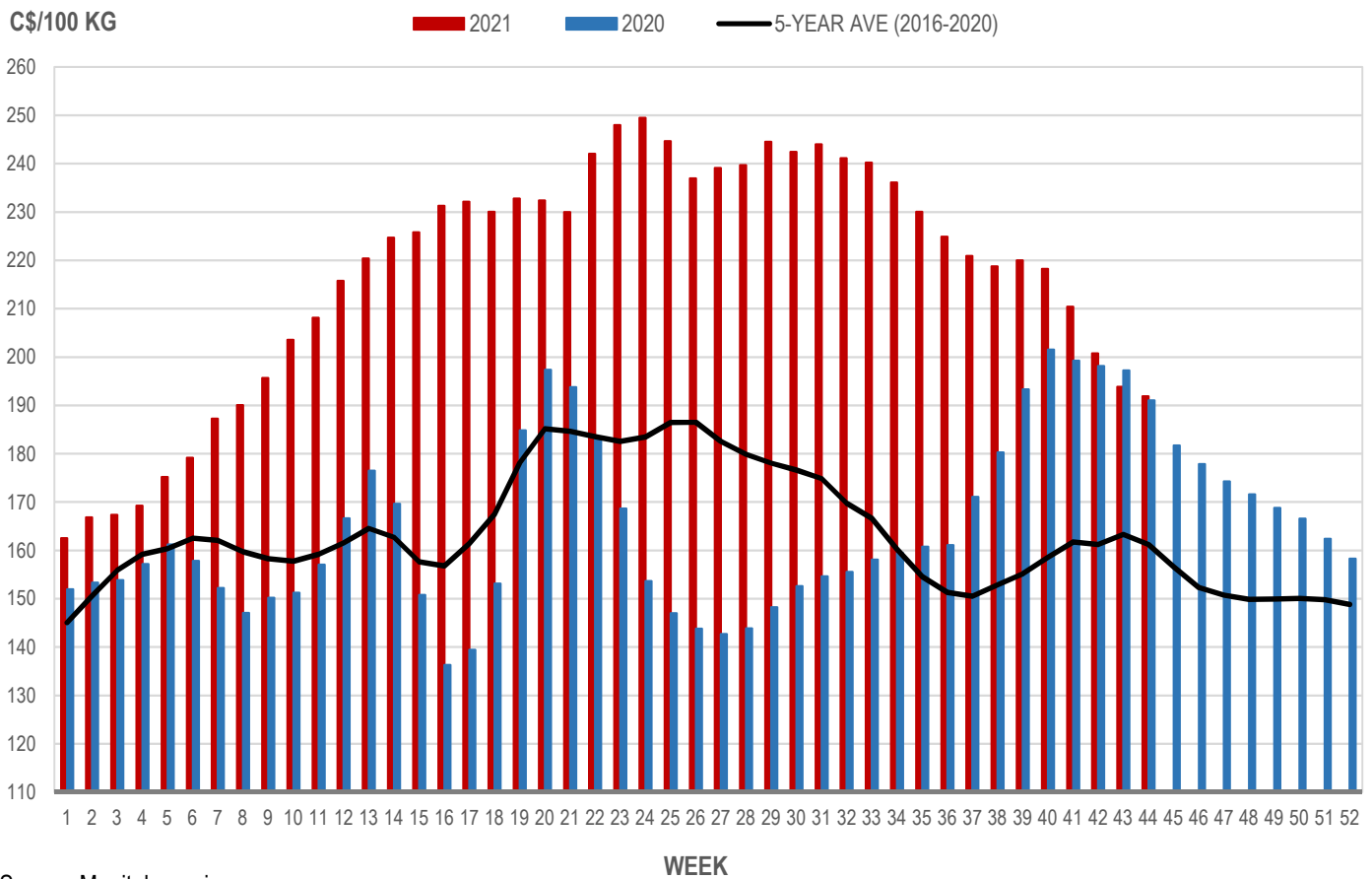
Source: Manitoba major processors.

Index 100, C\$/100 kg

| Week | Week ending date | 2021 | 2020 | Change from Previous Week | Change from Previous Year |
|--------------------------|------------------|---------------|---------------|---------------------------|---------------------------|
| 41 | 2021-10-15 | 210.43 | 199.26 | -3.6% | 5.6% |
| 42 | 2021-10-22 | 200.75 | 198.16 | -4.6% | 1.3% |
| 43 | 2021-10-29 | 193.83 | 197.25 | -3.4% | -1.7% |
| 44 | 2021-11-05 | 191.88 | 191.01 | -1.0% | 0.5% |
| Four week average | | 199.22 | 196.42 | - | 1.4% |

Source: Manitoba major processors.

MANITOBA WEIGHTED AVERAGE INDEX 100 HOG PRICES WEEKLY



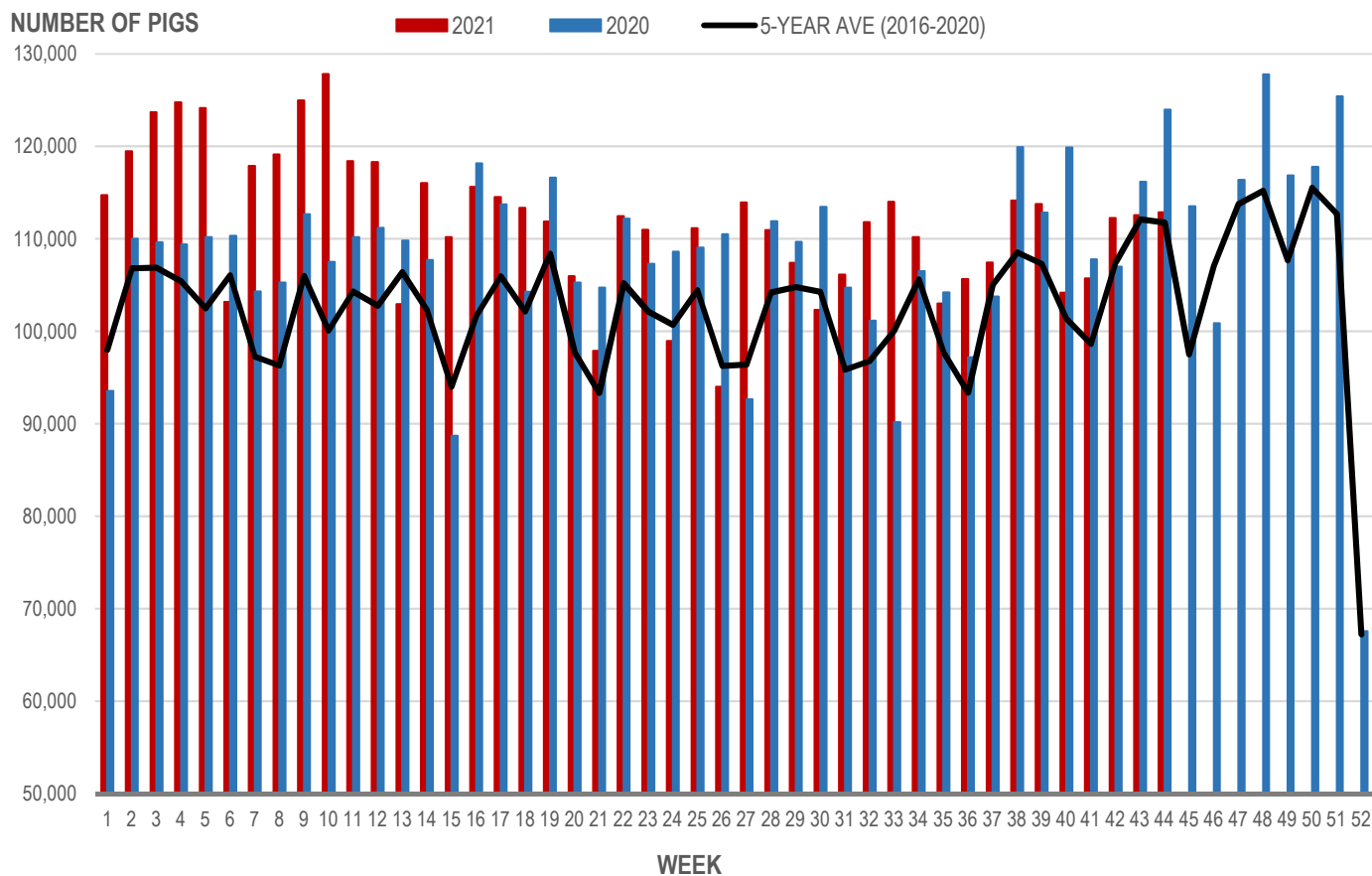
Source: Manitoba major processors

Number of Pigs Processed by Major Processors

| Week | Week ending date | 2021 | 2020 | Change from Previous Week | Change from Previous Year |
|--------------------------|------------------|----------------|----------------|---------------------------|---------------------------|
| 41 | 2021-10-15 | 105,716 | 107,781 | 1.5% | -1.9% |
| 42 | 2021-10-22 | 112,236 | 106,970 | 6.2% | 4.9% |
| 43 | 2021-10-29 | 112,542 | 116,155 | 0.3% | -3.1% |
| 44 | 2021-11-05 | 112,846 | 123,979 | 0.3% | -9.0% |
| Four week average | | 110,835 | 113,721 | - | -2.5% |

Source: Manitoba major processors.

NUMBER OF PIGS PROCESSED BY MAJOR PROCESSORS WEEKLY



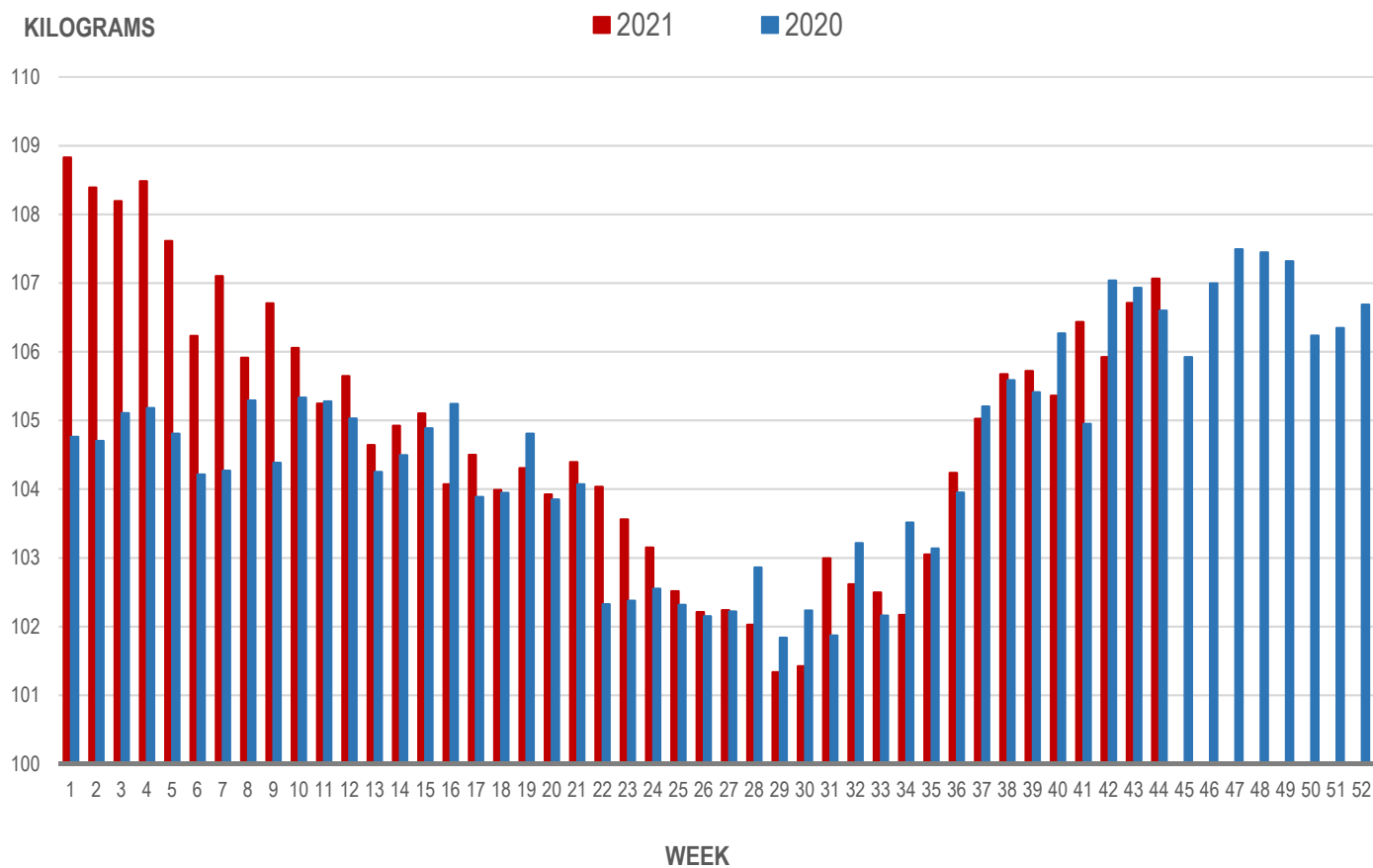
Source: Manitoba major processors

Average Weight of Hogs Processed by Major Processors, Kg

| Week | Week ending date | 2021 | 2020 | Change from Previous Week | Change from Previous Year |
|--------------------------|------------------|---------------|---------------|---------------------------|---------------------------|
| 41 | 2021-10-15 | 106.44 | 104.95 | 1.0% | 1.4% |
| 42 | 2021-10-22 | 105.92 | 107.04 | -0.5% | -1.0% |
| 43 | 2021-10-29 | 106.71 | 106.93 | 0.7% | -0.2% |
| 44 | 2021-11-05 | 107.07 | 106.60 | 0.3% | 0.4% |
| Four week average | | 106.53 | 106.38 | - | 0.2% |

Source: Manitoba major processors.

AVERAGE WEIGHT OF HOGS PROCESSED BY MAJOR PROCESSORS WEEKLY



Source: Manitoba major processors

CME FUTURES PRICES, US\$/lb, Friday settle price

| | LEAN HOG | Change * | PORK CUTOUT | Change * |
|-----------|-----------------|-----------------|--------------------|-----------------|
| Dec 2021 | 76.55 | 0.47 | 94.38 | 0.30 |
| Feb 2022 | 79.48 | 0.80 | 92.58 | 0.58 |
| Apr 2022 | 83.85 | 1.80 | 93.93 | 2.05 |
| May 2022 | 88.50 | 1.30 | 99.58 | 3.33 |
| Jun 2022 | 94.43 | 2.60 | 104.53 | 2.45 |
| July 2022 | 95.13 | 2.85 | 102.95 | 4.20 |
| Aug 2022 | 93.98 | 2.88 | 104.30 | 4.43 |
| Oct 2022 | 79.50 | 2.18 | 92.45 | 4.43 |
| Dec 2022 | 73.50 | 1.68 | 87.68 | 4.43 |
| Feb 2023 | 77.85 | 1.68 | 87.83 | 4.43 |
| Apr 2023 | 81.15 | 1.68 | 87.98 | 4.43 |

Source: CME

* Price change from previous week, US\$

MAPLE LEAF Sig #4 - Contract Prices Top of Range

| | Sig #4 Price C\$/100 kg | Change * |
|-----------|--------------------------------|-----------------|
| Dec 2021 | 169.66 | 7.49 |
| Jan 2022 | 173.55 | 7.25 |
| Feb 2022 | 176.43 | 7.27 |
| Mar 2022 | 177.14 | 7.81 |
| Apr 2022 | 183.85 | 8.01 |
| May 2022 | 195.88 | 9.32 |
| June 2022 | 204.08 | 9.38 |
| July 2022 | 206.39 | 10.74 |

Source: HAMs Marketing

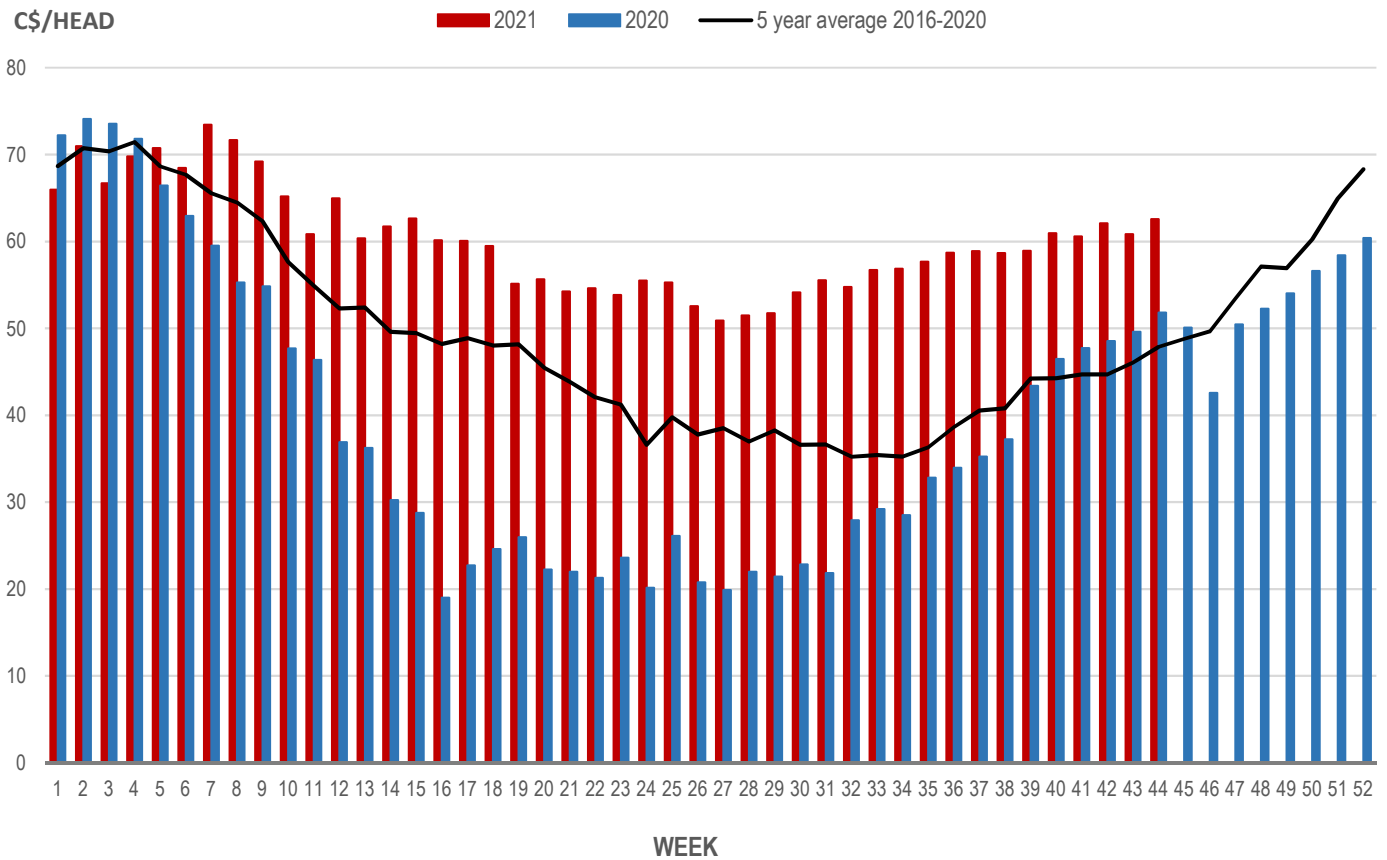
* Price change from previous week, C\$

Weaning Pigs (U.S. Total Composite Weighted Average Price per Head)

| | Formula and Cash Low, US\$/Head | Formula and Cash High, US\$/Head | Wtd Avg Price, US\$/Head | Wtd Avg Price, C\$/Head |
|-------------------------|------------------------------------|-------------------------------------|-----------------------------|----------------------------|
| Early Weaned (10-12 lb) | 36.00 | 57.00 | 50.24 | 62.56 |
| Feeder Pigs (40 lb) | 65.00 | 74.00 | 69.80 | 86.91 |

Source: USDA, AMS

EARLY WEANED PIGS (U.S. TOTAL COMPOSITE WEIGHTED AVERAGE PRICE PER HEAD) WEEKLY



Source: USDA, AMS

Contact us

Go to manitoba.ca/agriculture and click on Markets and Statistics

Email us at industryintelligence@gov.mb.ca

Follow us on Twitter @MBGovAg