

MANITOBA MARKETS

Hog Prices



April 14, 2026

[Click here for definitions of how data is collected and calculated.](#)

Exchange rates (Friday close)

1 US \$ = C \$1.3825

1 EURO = C \$1.6211

1 Yen = C \$0.00868

[Data source: Bank of Canada](#)

[Click to view the interactive hog dashboards for current and historical charts.](#)

Manitoba Weighted Average Carcass Prices (including premiums and discounts)

All In Weights C\$/100 kg

| Week | Week ending date | 2026 | 2025 | Change from Previous Week | Change from Previous Year |
|--------------------------|------------------|---------------|---------------|------------------------------|------------------------------|
| 12 | 2026-03-20 | 249.54 | 249.78 | 2.1% | -0.1% |
| 13 | 2026-03-27 | 249.95 | 249.69 | 0.2% | 0.1% |
| 14 | 2026-04-03 | 250.02 | 249.27 | 0.0% | 0.3% |
| 15 | 2026-04-10 | 247.16 | 246.30 | -1.1% | 0.3% |
| Four week average | | 249.17 | 248.76 | - | 0.00 |

Source: Manitoba major processors.

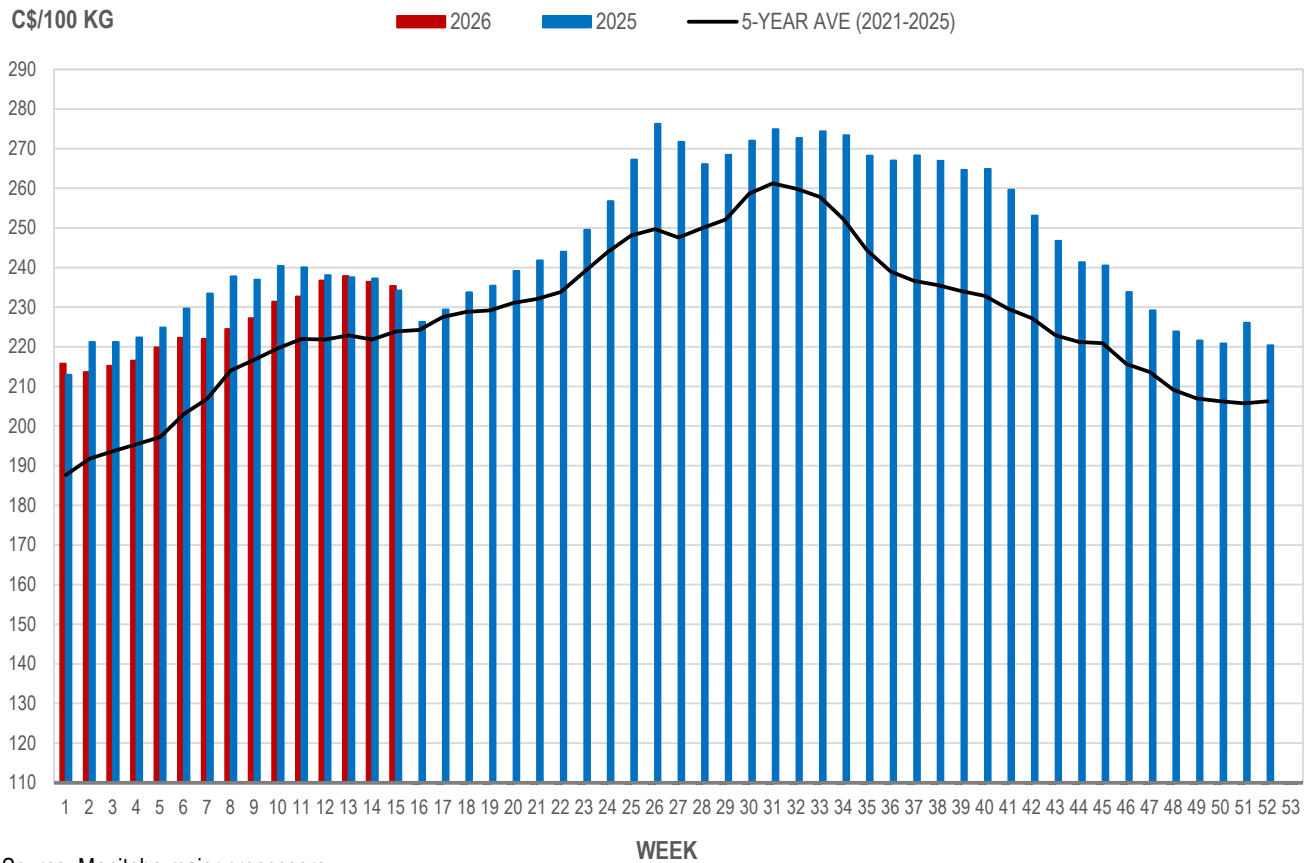


Index 100, C\$/100 kg

| Week | Week ending date | 2026 | 2025 | Change from Previous Week | Change from Previous Year |
|--------------------------|------------------|---------------|---------------|---------------------------|---------------------------|
| 12 | 2026-03-20 | 236.68 | 238.07 | 1.7% | -0.6% |
| 13 | 2026-03-27 | 237.83 | 237.57 | 0.5% | 0.1% |
| 14 | 2026-04-03 | 236.42 | 237.27 | -0.6% | -0.4% |
| 15 | 2026-04-10 | 235.34 | 234.17 | -0.5% | 0.5% |
| Four week average | | 236.57 | 236.77 | - | 0.00 |

Source: Manitoba major processors.

MANITOBA WEIGHTED AVERAGE INDEX 100 HOG PRICES WEEKLY



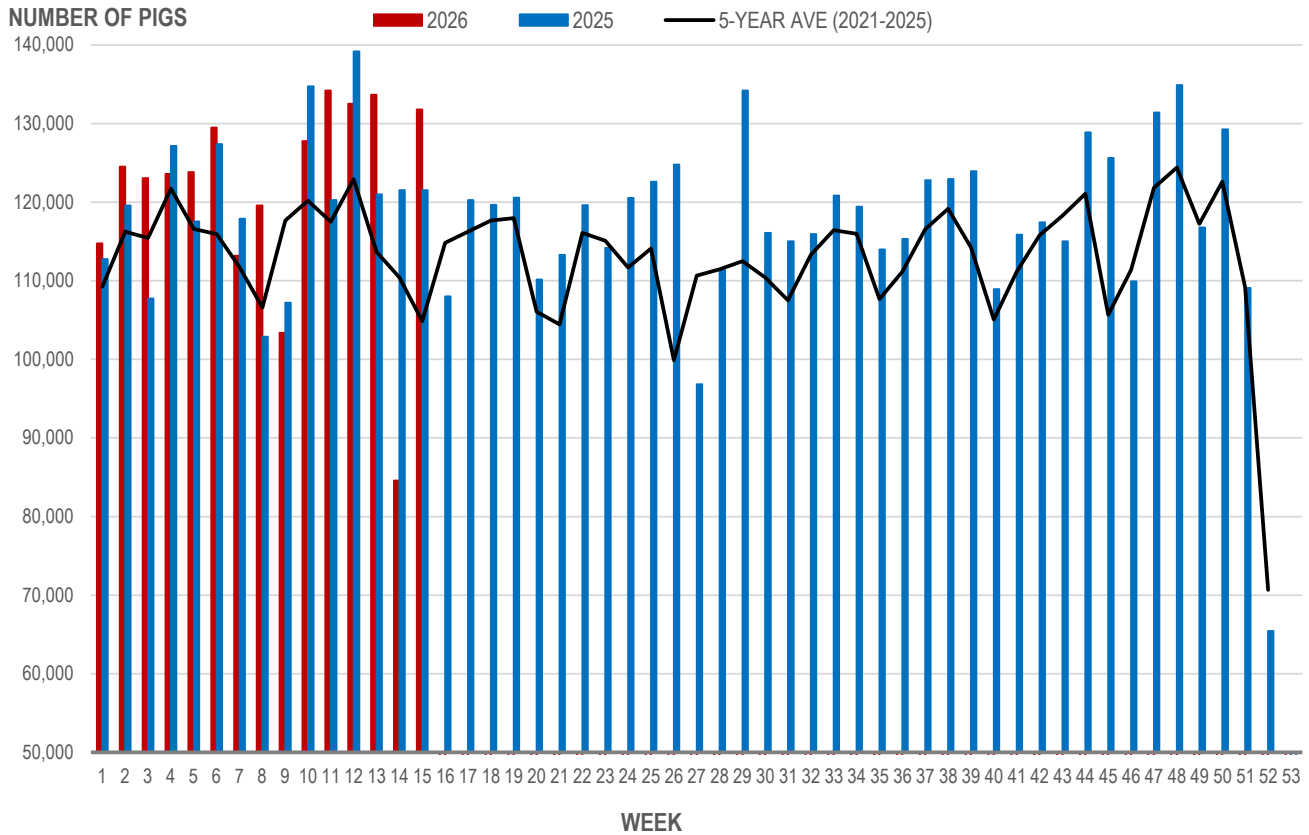
Source: Manitoba major processors

Number of Pigs Processed by Major Processors

| Week | Week ending date | 2026 | 2025 | Change from Previous Week | Change from Previous Year |
|--------------------------|------------------|----------------|----------------|---------------------------|---------------------------|
| 12 | 2026-03-20 | 132,529 | 139,182 | -1.2% | -4.8% |
| 13 | 2026-03-27 | 133,657 | 121,003 | 0.9% | 10.5% |
| 14 | 2026-04-03 | 84,592 | 121,527 | -36.7% | -30.4% |
| 15 | 2026-04-10 | 131,808 | 121,534 | 55.8% | 8.5% |
| Four week average | | 120,647 | 125,812 | - | -0.04 |

Source: Manitoba major processors.

NUMBER OF PIGS PROCESSED BY MAJOR PROCESSORS WEEKLY



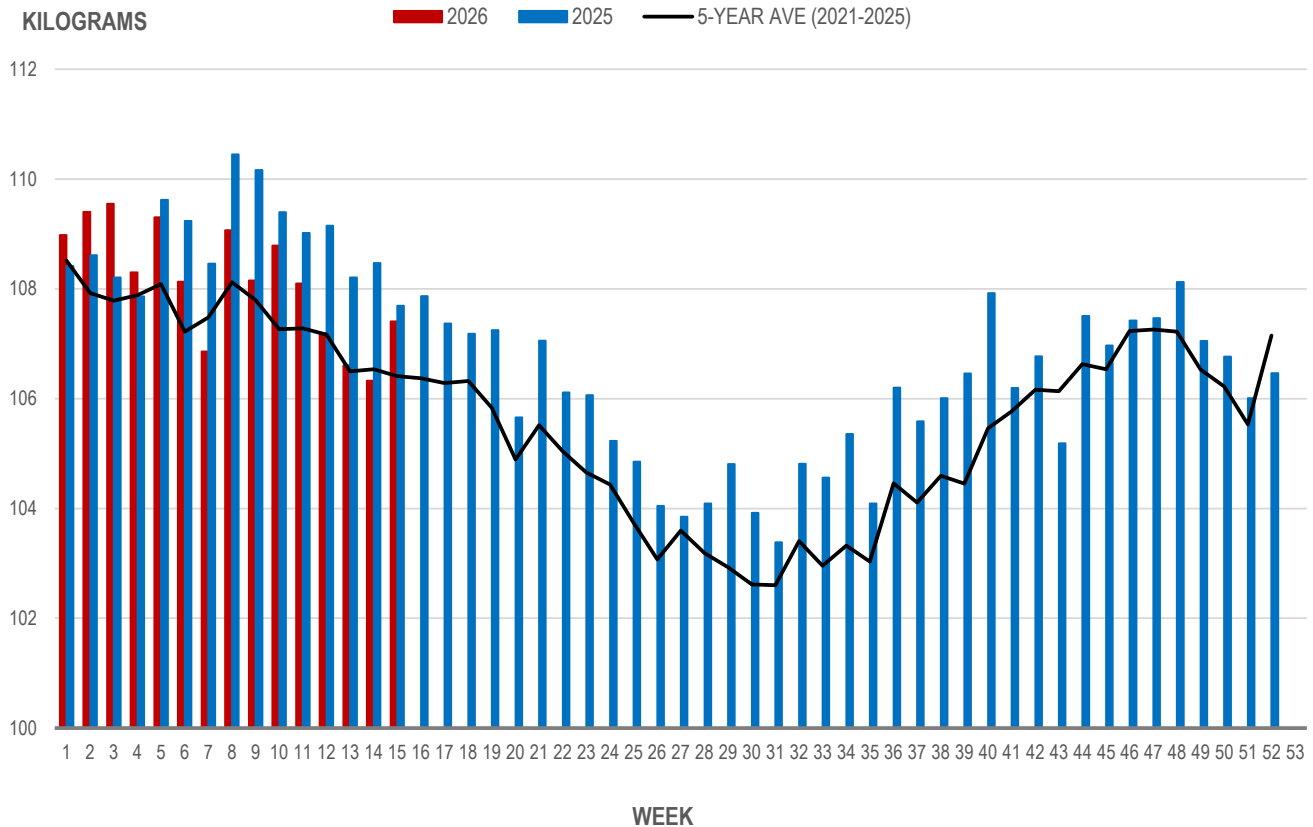
Source: Manitoba major processors

Average Weight of Hogs Processed by Major Processors, Kg

| Week | Week ending date | 2026 | 2025 | Change from Previous Week | Change from Previous Year |
|--------------------------|------------------|---------------|---------------|---------------------------|---------------------------|
| 12 | 2026-03-20 | 107.19 | 109.15 | -0.8% | -1.8% |
| 13 | 2026-03-27 | 106.61 | 108.21 | -0.5% | -1.5% |
| 14 | 2026-04-03 | 106.33 | 108.47 | -0.3% | -2.0% |
| 15 | 2026-04-10 | 107.40 | 107.69 | 1.0% | -0.3% |
| Four week average | | 106.88 | 108.38 | - | -0.01 |

Source: Manitoba major processors.

AVERAGE WEIGHT OF HOGS PROCESSED BY MAJOR PROCESSORS WEEKLY



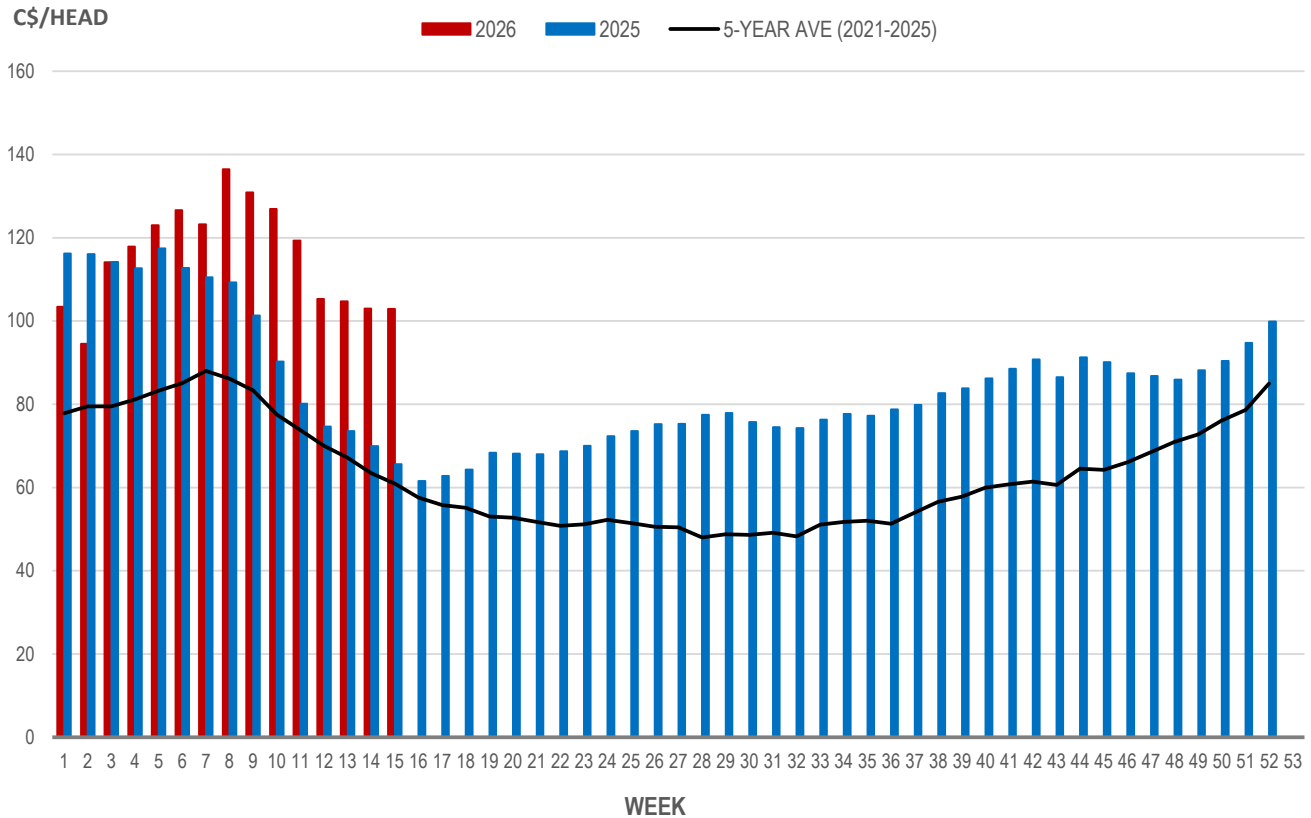
Source: Manitoba major processors

Weaning Pigs (U.S. Total Composite Weighted Average Price per Head)

| | Formula and Cash Low, US\$/Head | Formula and Cash High, US\$/Head | Wtd Avg Price, US\$/Head | Wtd Avg Price, C\$/Head |
|-------------------------|---------------------------------|----------------------------------|--------------------------|-------------------------|
| Early Weaned (10-12 lb) | 49.96 | 95.00 | 74.43 | 102.90 |
| Feeder Pigs (40 lb) | 120.00 | 140.00 | 126.56 | 174.97 |

Source: USDA, AMS

EARLY WEANED PIGS (U.S. TOTAL COMPOSITE WEIGHTED AVERAGE PRICE PER HEAD) WEEKLY



Source: USDA, AMS

Contact us

- www.manitoba.ca/agriculture/markets-and-statistics/
- Email us at industryintelligence@gov.mb.ca
- Follow us on X @MBGovAg

